

Land Use Methods and Metrics Outcome- Update

Peter R. Claggett & Sarah McDonald

Lower Mississippi-Gulf Water Science Center, U.S. Geological Survey, Annapolis, MD 21403

**Land Use Workgroup Meeting
December 1, 2021**

U.S. Department of the Interior
U.S. Geological Survey

LUMM Indicators Assessed to Date

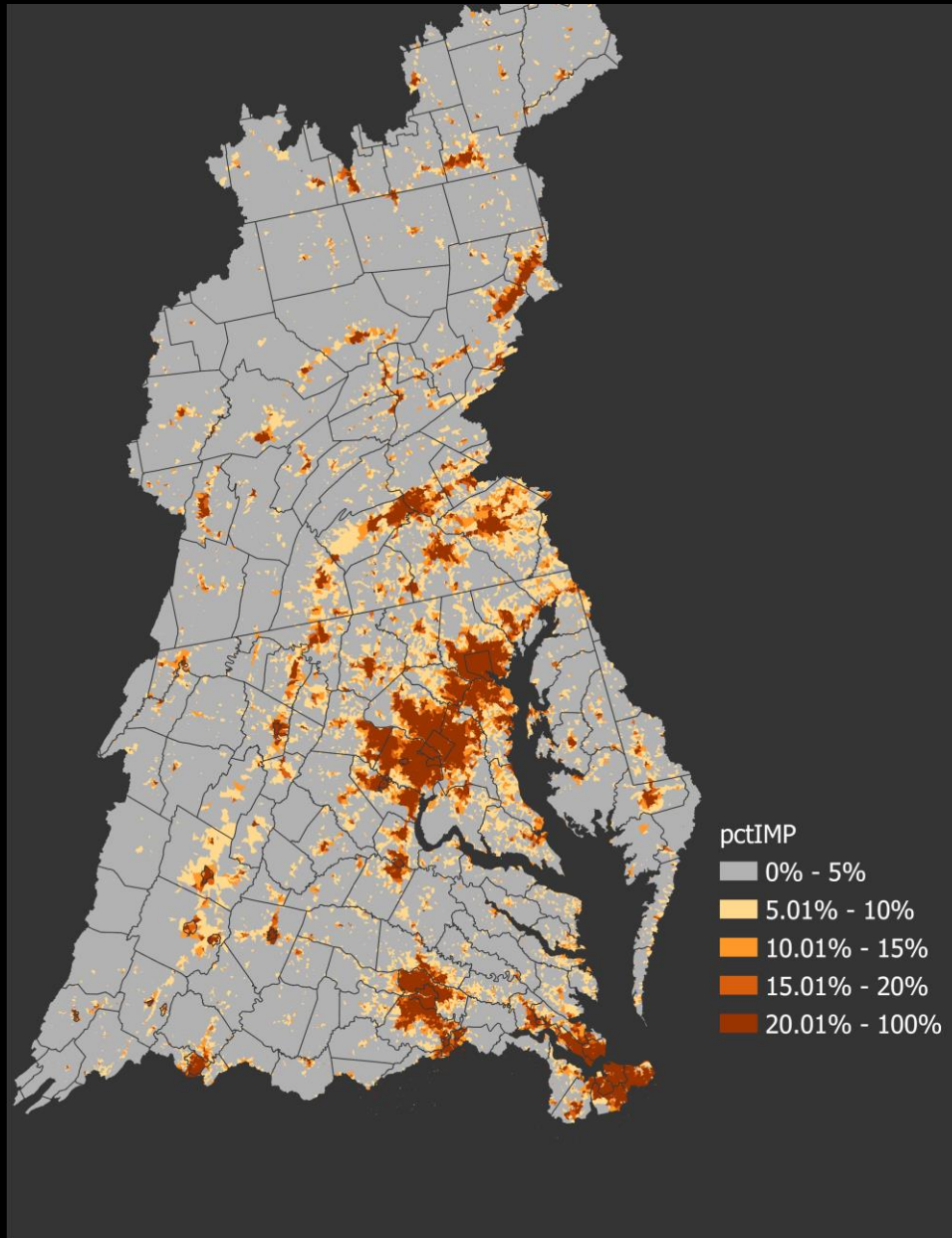
County and NHD catchment:

- Impervious surfaces (% and change)
- Natural lands (% and change)
- Agricultural lands (% and change)

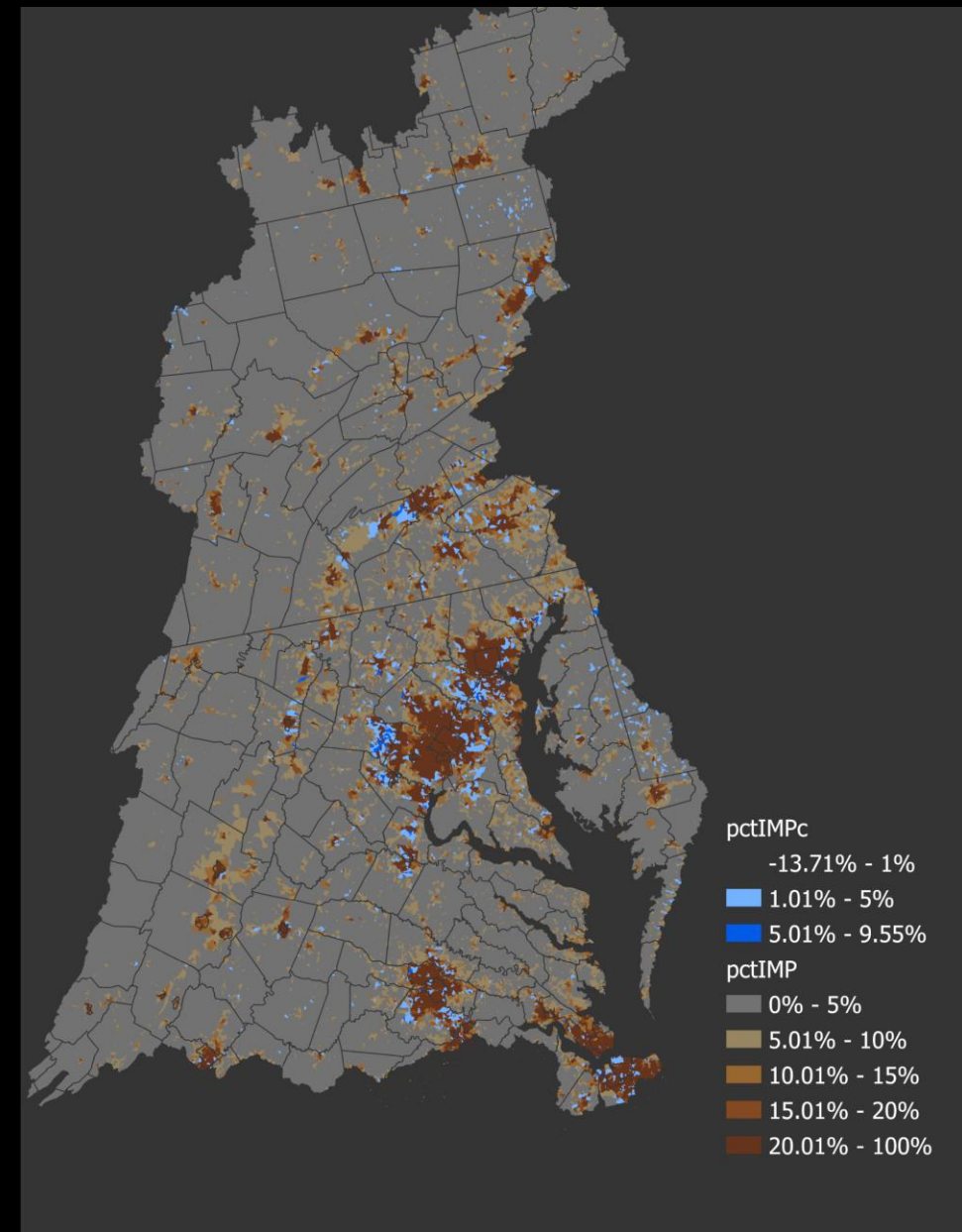
TBD:

- Forest cover (% and change) (County and NHD catchment)
- Forest clearing and regrowth (County)
- Urban tree canopy (Census Places and/or Urban Areas)
- Residential and commercial development (County)

Impervious Cover (%)



Impervious Cover Change (%)



Impervious Cover (%)

Impervious Cover Change (%)

1-5% increase in area with > 10% impervious, SW of Carlisle, PA



1-5% increase in area with < 10% impervious, S of Shippensburg, PA

pctIMPc

-13.71% - 1%

1.01% - 5%

5.01% - 9.55%

pctIMP

0% - 5%

5.01% - 10%

10.01% - 15%

15.01% - 20%

20.01% - 100%



science for a changing world