

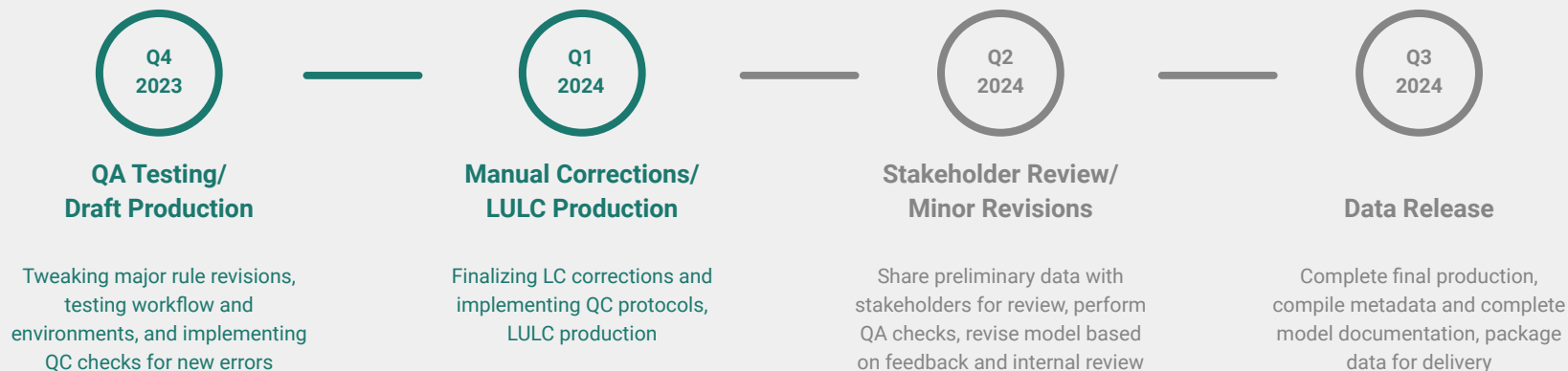


2024 Edition Land Use/Land Cover Revision Updates

Steven Guinn, Chesapeake Conservancy
Joint Land Use and Forestry Workgroup | 1 December 2023

1-meter Land Use/Land Cover Data Project

Overall timeline - 2024 edition



Tree Canopy in Developed Areas

2022 Edition



2024 Edition

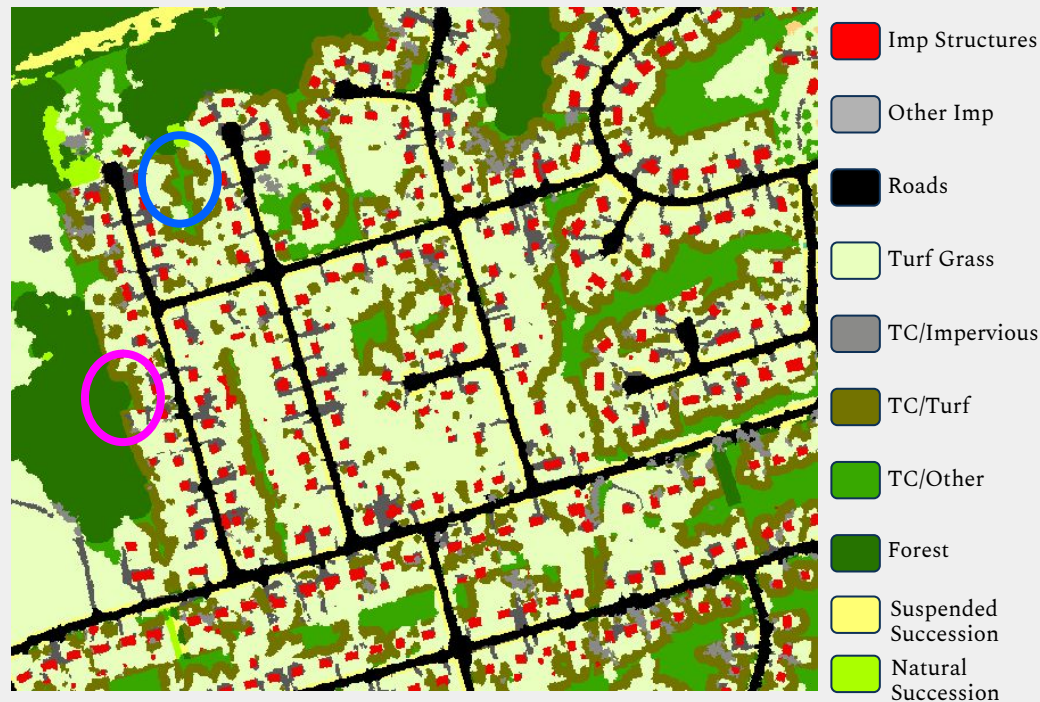


Tree Canopy in Developed Areas

2022 Edition

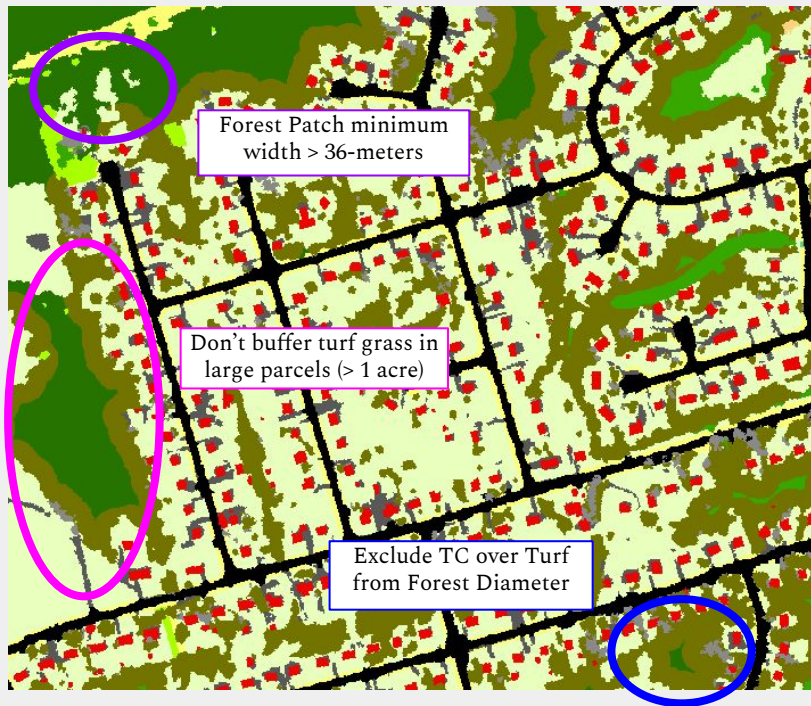


2024 Edition

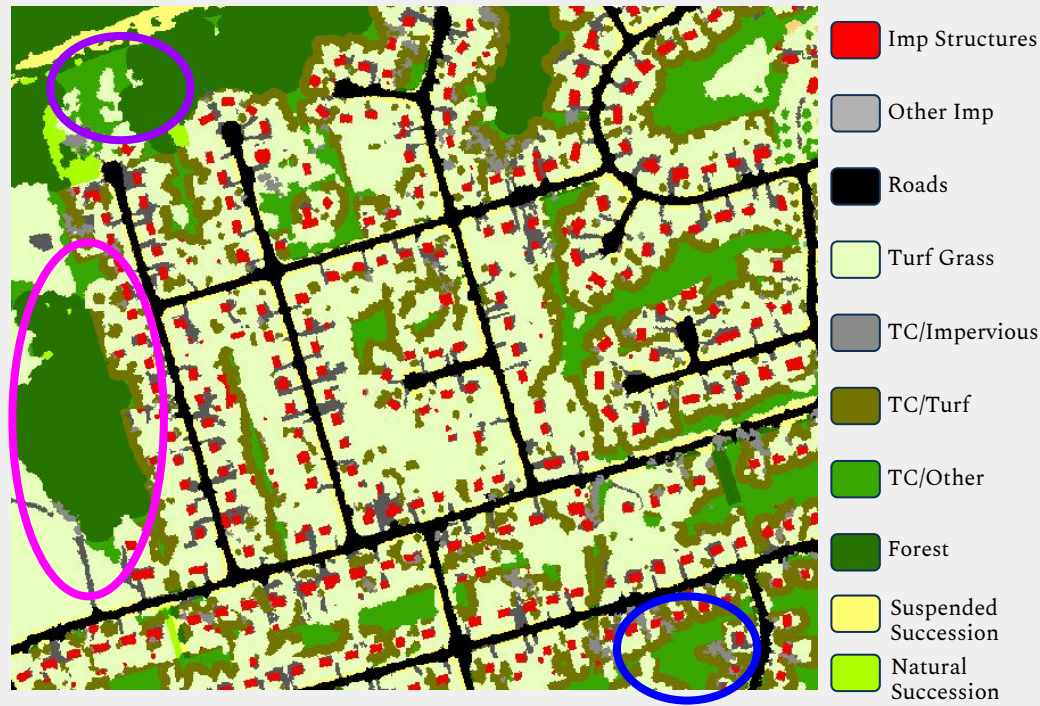


Tree Canopy in Developed Areas

2022 Edition



2024 Edition



Mixed Successional Tree Canopy as Forest

2022 Edition

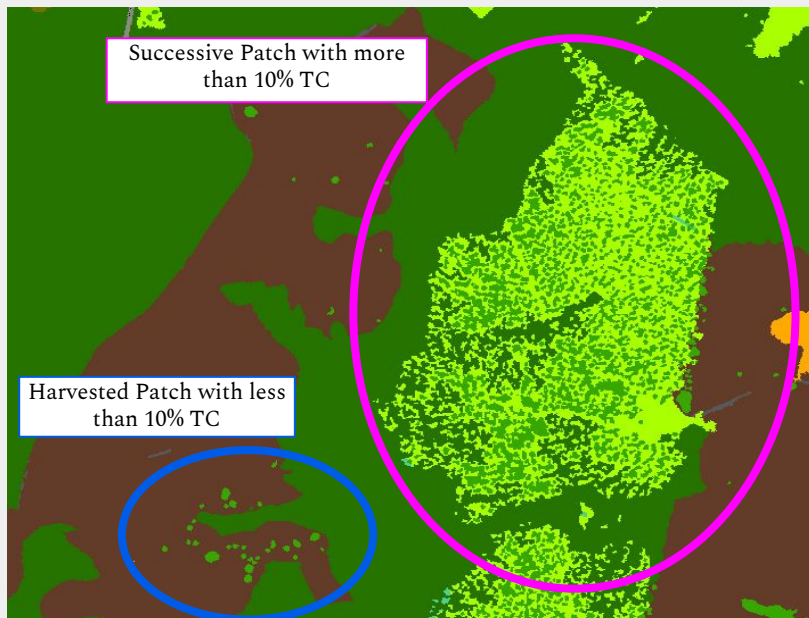


2024 Edition

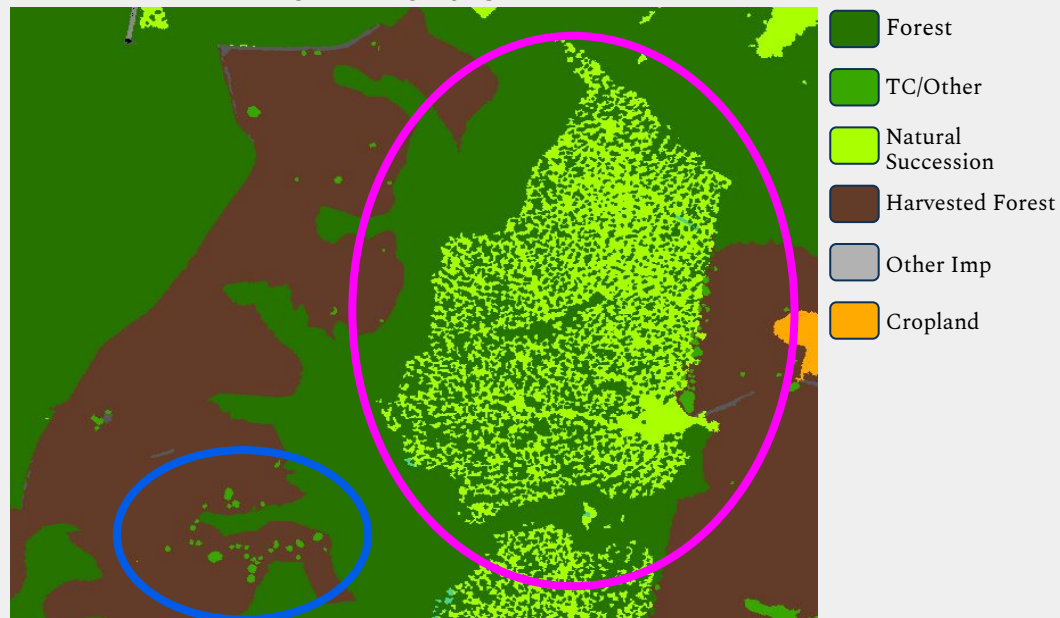


Mixed Successional Tree Canopy as Forest

2022 Edition



2024 Edition

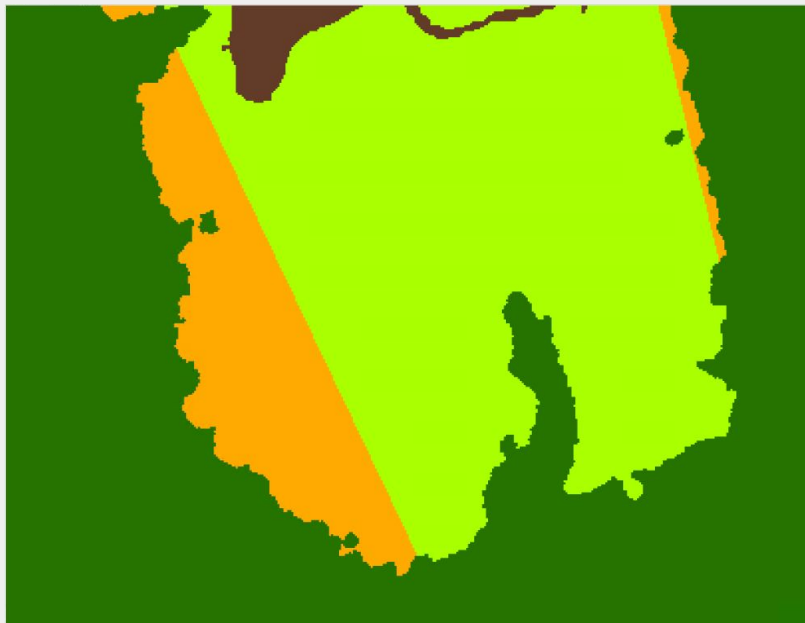


Tree Canopy Rule change effects: Summary Tables

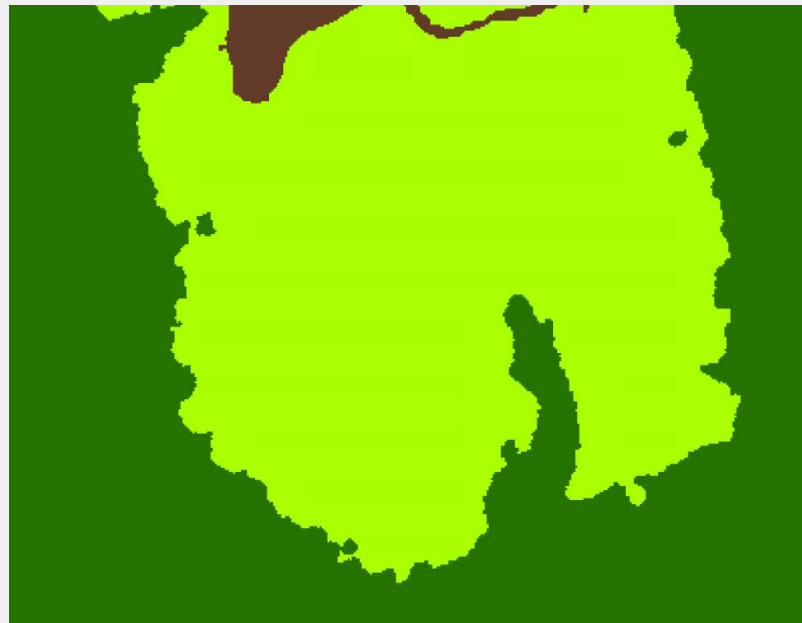
	Gloucester, VA			Botetourt, VA		
	2022 Ed.	2024 Ed.	Difference	2022 Ed.	2024 Ed.	Difference
Forest	87,023	87,583	561	257,263	257,477	214
Tree Canopy Other	1,366	4,128	2,763	5,154	8,148	2,994
Tree Canopy over Turf Grass	5,930	2,607	(3,323)	5,391	2,180	(3,211)

Harvested Forest prioritized over ag

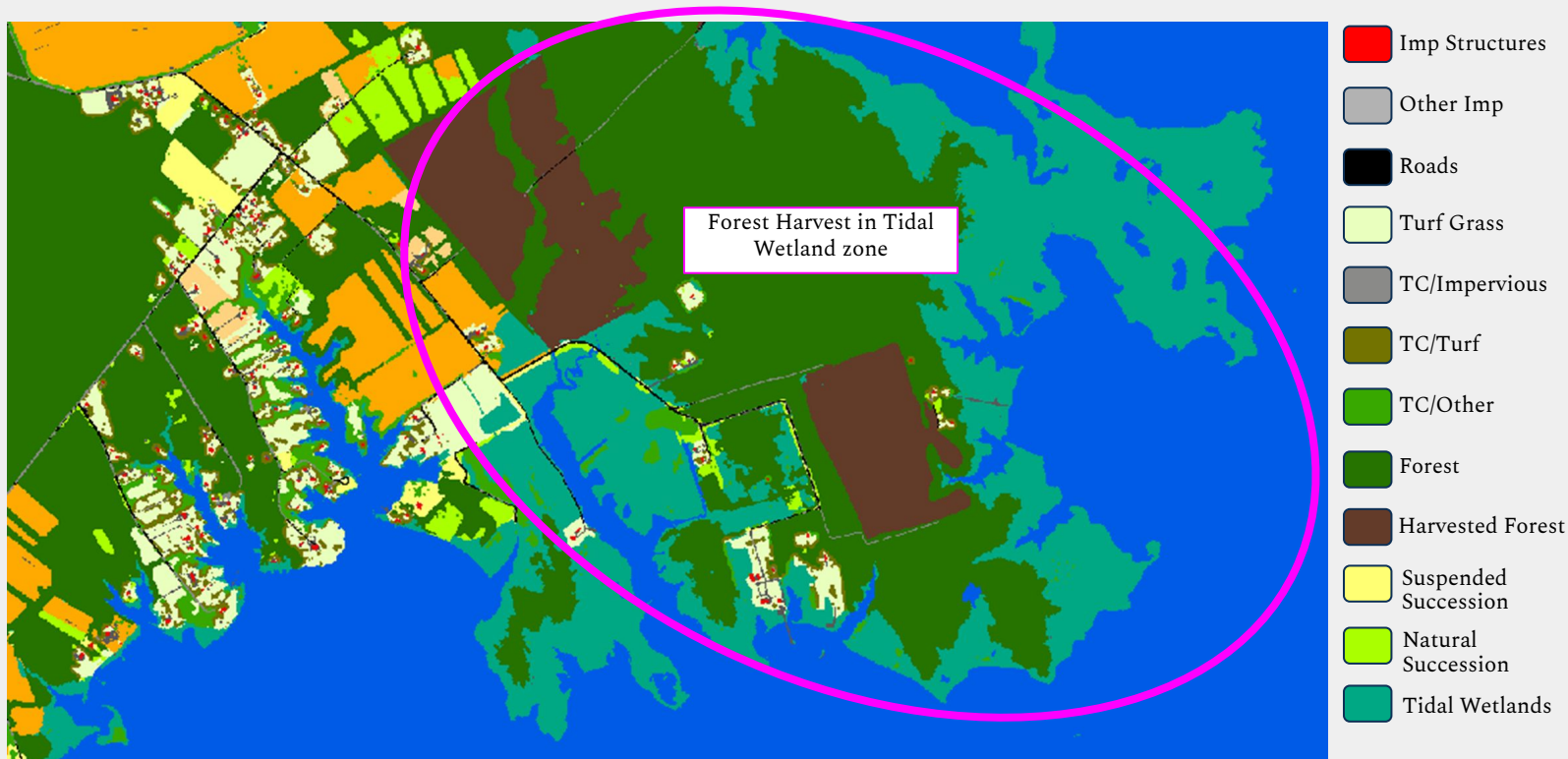
2022 Edition



2024 Edition





Harvested Forest Wetlands



Solar Arrays



-  Imp Structures
-  Other Impervious
-  Roads
-  Turf Grass
-  Solar Field Panel Arrays
-  TC/Turf
-  TC/Other
-  Forest
-  Suspended Succession
-  Natural Succession

Chesapeake Bay Land Use/Cover Classification (2024 edition, 56 planned)

Water and Water Margins

10 Tidal Waters

Lentic

- 11 Lakes & Reservoirs
- 12 Riverine Ponds
- 13 Terrene Ponds

Lotic

- 14 Streams and Rivers

Water Margins

- 15 Bare Shore

Forest

Tree Canopy

- 40 Forest
- 41 Tree Canopy Other

Open Space (temporary)

- 42 Natural Succession Barren
- 43 Natural Succession Herbaceous
- 44 Natural Succession Shrubland
- 45 Harvested Forest Barren
- 46 Harvested Forest Herbaceous

Agriculture

Productive Lands

- 80 Cropland Barren
- 81 Cropland Herbaceous
- 82 Orchards and Vineyards Barren
- 83 Orchards and Vineyards Herbaceous
- 84 Orchards and Vineyards Shrubland
- 85 Pasture and Hay Barren
- 86 Pasture and Hay Herbaceous

Development

Impervious

- 20 Roads
- 21 Structures
- 22 Other Impervious (Parking lots, driveways)
- 23 TC over Roads
- 24 TC over Structures
- 25 TC over Other Impervious
- 31 Extractive Impervious
- 32 Solar Field Panel Arrays (impervious)

Pervious

- 26 Tree Canopy over Turf Grass
- 27 Turf Grass
- 28 Bare Developed
- 30 Extractive Barren
- 33 Solar Field Barren
- 34 Solar Field Herbaceous
- 35 Solar Field Shrubland
- 36 Suspended Succession Barren
- 37 Suspended Succession Herbaceous
- 38 Suspended Succession Shrubland

Wetlands

Riverine

- 50 Riverine Wetlands Barren
- 51 Riverine Wetlands Herbaceous
- 52 Riverine Wetlands Shrubland
- 53 Riverine Wetlands Tree Canopy
- 54 Riverine Wetlands Forest
- 55 Riverine Wetlands Harvested Forest

Terrene

- 60 Terrene Wetlands Barren
- 61 Terrene Wetlands Herbaceous
- 62 Terrene Wetlands Shrubland
- 63 Terrene Wetlands Tree Canopy
- 64 Terrene Wetlands Forest
- 65 Terrene Wetlands Harvested Forest

Tidal

- 70 Tidal Wetlands Barren
- 71 Tidal Wetlands Herbaceous
- 72 Tidal Wetlands Shrubland
- 73 Tidal Wetlands Tree Canopy
- 74 Tidal Wetlands Forest
- 75 Tidal Wetlands Harvested Forest

Agricultural Facilities*

- 90 Agricultural Structure
- 91 Animal Operation Impervious
- 92 Animal Operation Barren
- 93 Animal Operation Herbaceous
- 94 TC over Agricultural Structure
- 95 TC over Animal Operation Impervious

*are being mapped and identified, but are not currently intended for integrating into the final classification

Steven Guinn (he/him)

Geospatial Modeler

Chesapeake Conservancy

sguinn@chesapeakeconservancy.org

Sarah McDonald (she/her)

Geographer

U. S. Geological Survey

smcdonald@chesapeakebay.net



Questions? Feedback?