

Objective 1 Updates

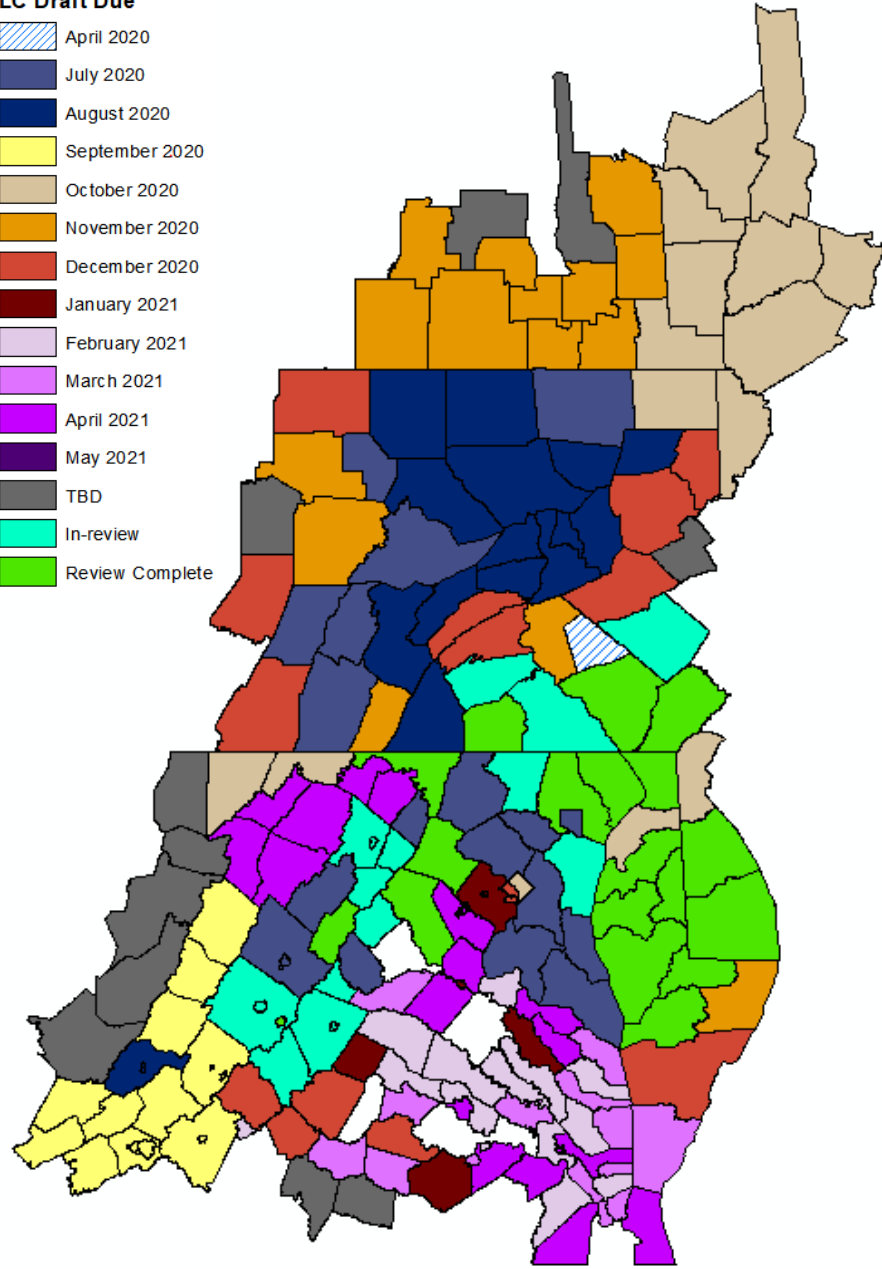
July 1, 2020: LUWG

Rachel Soobitsky

rsoobitsky@chesapeakeconservancy.org

Land Cover Production Schedule

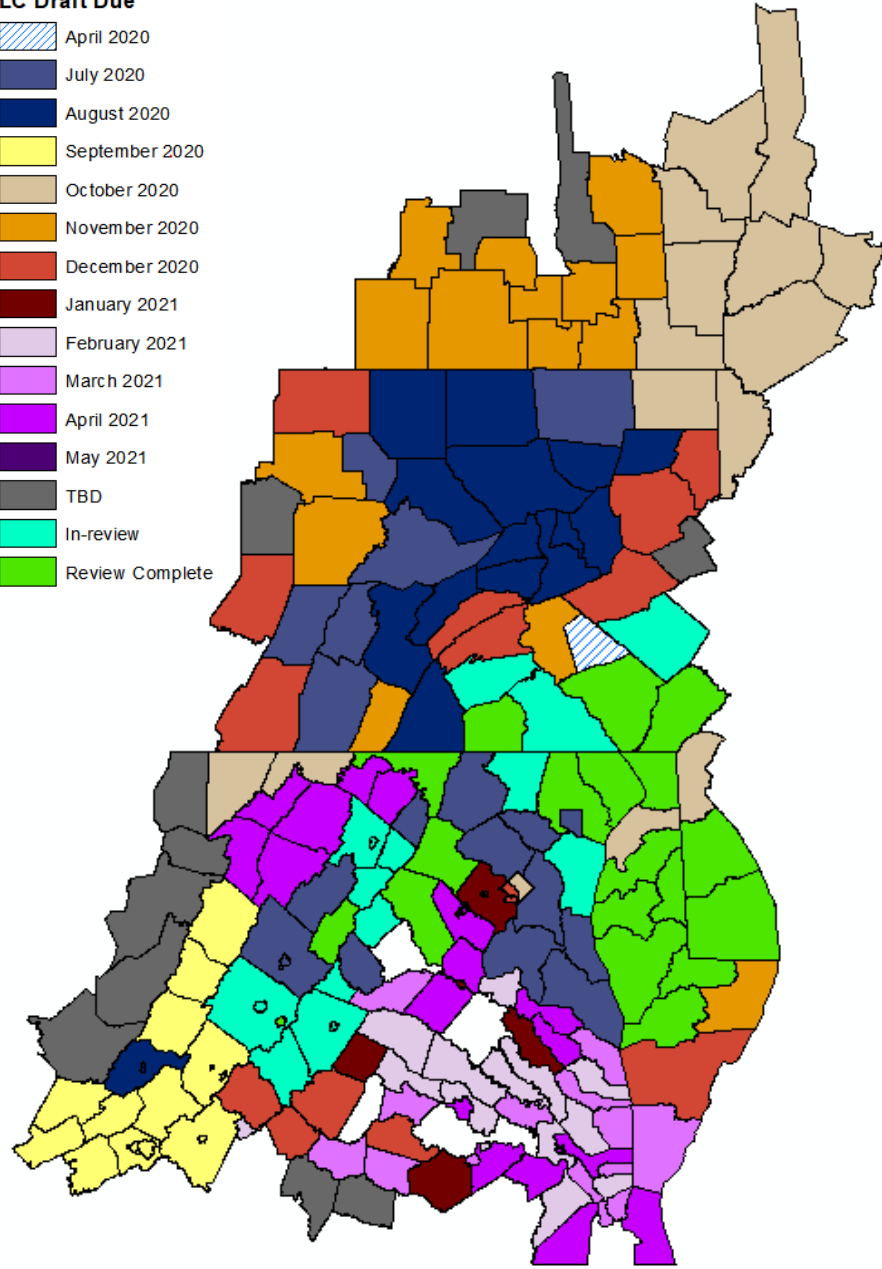
LC Draft Due



- Review temporarily postponed due to COVID-19:
 - Lebanon County, PA
- Review extended due to COVID-19:
 - Carroll County, MD
 - York County, PA
 - Cumberland County, PA
 - Berks County, PA
- Review-time passed (feedback from county in green):
 - Baltimore County, MD
 - Cecil County, MD
 - Queen Anne's, MD
 - Talbot, MD
 - Somerset, MD
 - Wicomico, MD
 - Dorchester, MD
 - Harford, MD
 - Caroline, MD
 - Washington, MD
 - Adams County, PA
 - Chester County, PA
 - Lancaster, PA
 - Kent, DE
 - Sussex, DE
 - Page, VA
 - Waynesboro, VA
 - Loudon, VA
 - Fauquier, VA

Land Cover Production Schedule

LC Draft Due



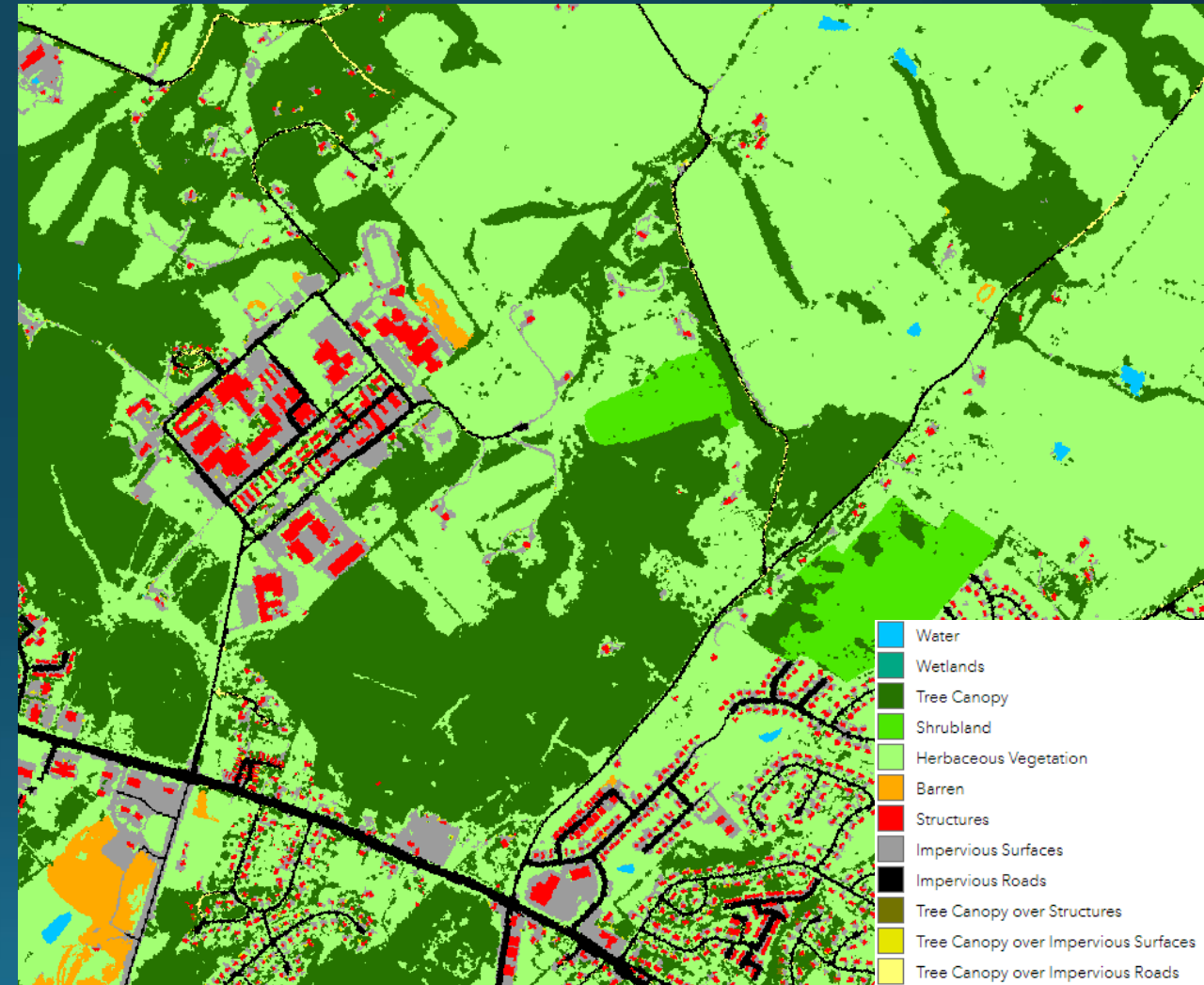
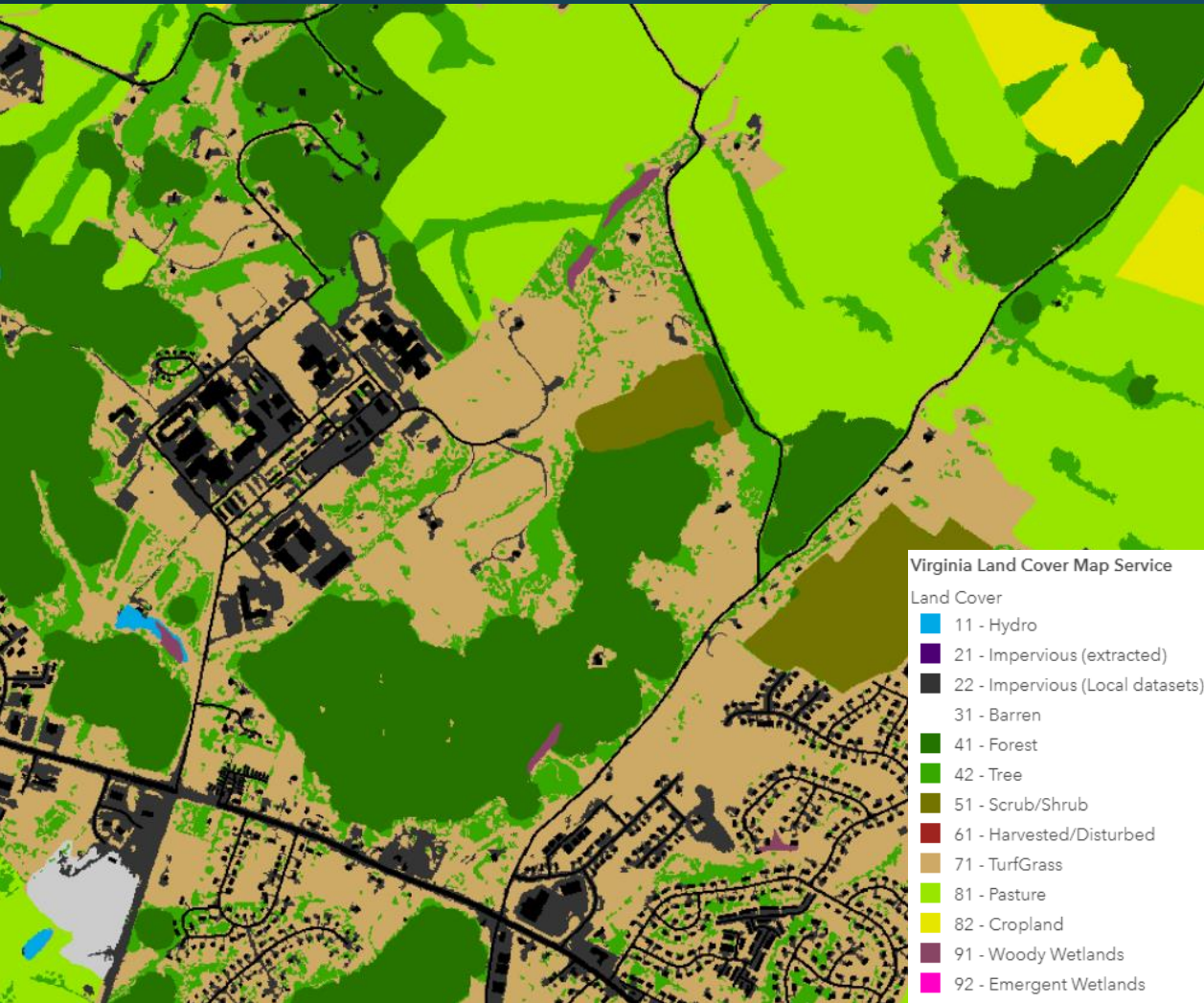
Localities Currently In-Review:

- Anne Arundel, MD
- Charlottesville, VA
- Staunton, VA
- Greene, VA
- Frederick, VA
- Albemarle, VA
- Clarke, VA
- Nelson, VA
- Warren, VA
- Augusta, VA
- Winchester, VA
- Rappahannock, VA

Upcoming Localities to Review:

- Harrisonburg, VA
- Madison, VA
- Rockingham, VA
- Shenandoah, VA
- Jefferson, WV
- Baltimore City, MD
- Calvert, MD
- Charles, MD
- Frederick, MD
- Howard, MD
- Montgomery, MD
- Prince George's, MD
- St. Mary's, MD
- Bedford, PA
- Blair, PA
- Bradford, PA
- Cambria, PA
- Cameron, PA
- Centre, PA

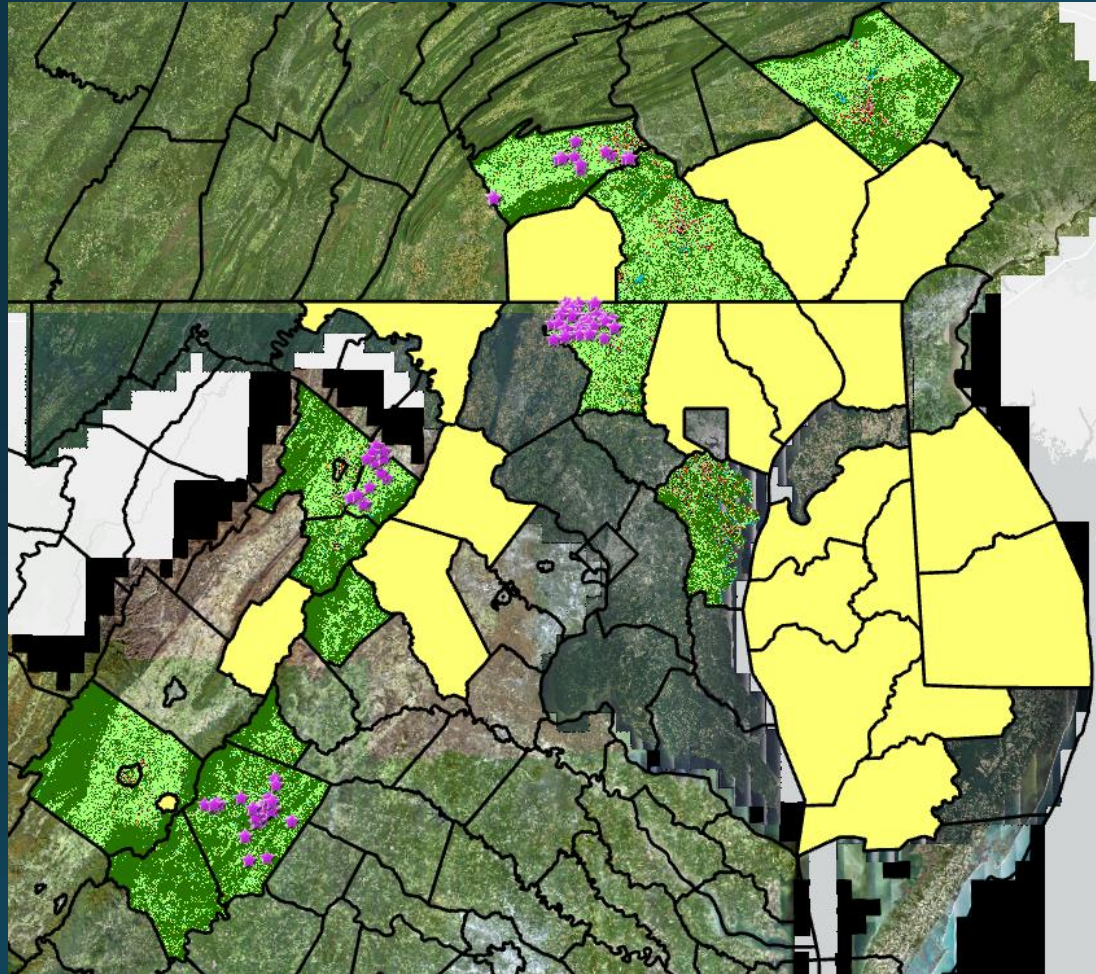
Virginia



Virginia

- CIC reclassified 2013/14 VA LC into 9 of our classes (water, tree canopy, shrubland, low vegetation, barren, impervious roads, impervious, tree canopy over impervious, tree canopy over impervious roads). Patched our own tree canopy layer, removed wetlands.
- 2017/18: UVM is using our reclassified VA LC, and using lidar and building planimetrics to capture structures (therefore also creating TC over structures). CIC, CBP, and UVM are working on an updated wetlands class in VA.
 - Cropland and pasture will be captured in our Land Use dataset

Land Cover Data Review Feedback



- Asked for general systematic errors that will help UVM fix model
 - Tile line errors
 - Missing Buildings
 - Over classification of Impervious
 - Over classification of barren
 - Under reporting of shrubland
 - Delineation of water bodies
 - Over classification of water in shadows

Questions?

rsoobitsky@chesapeakeconservancy.org