

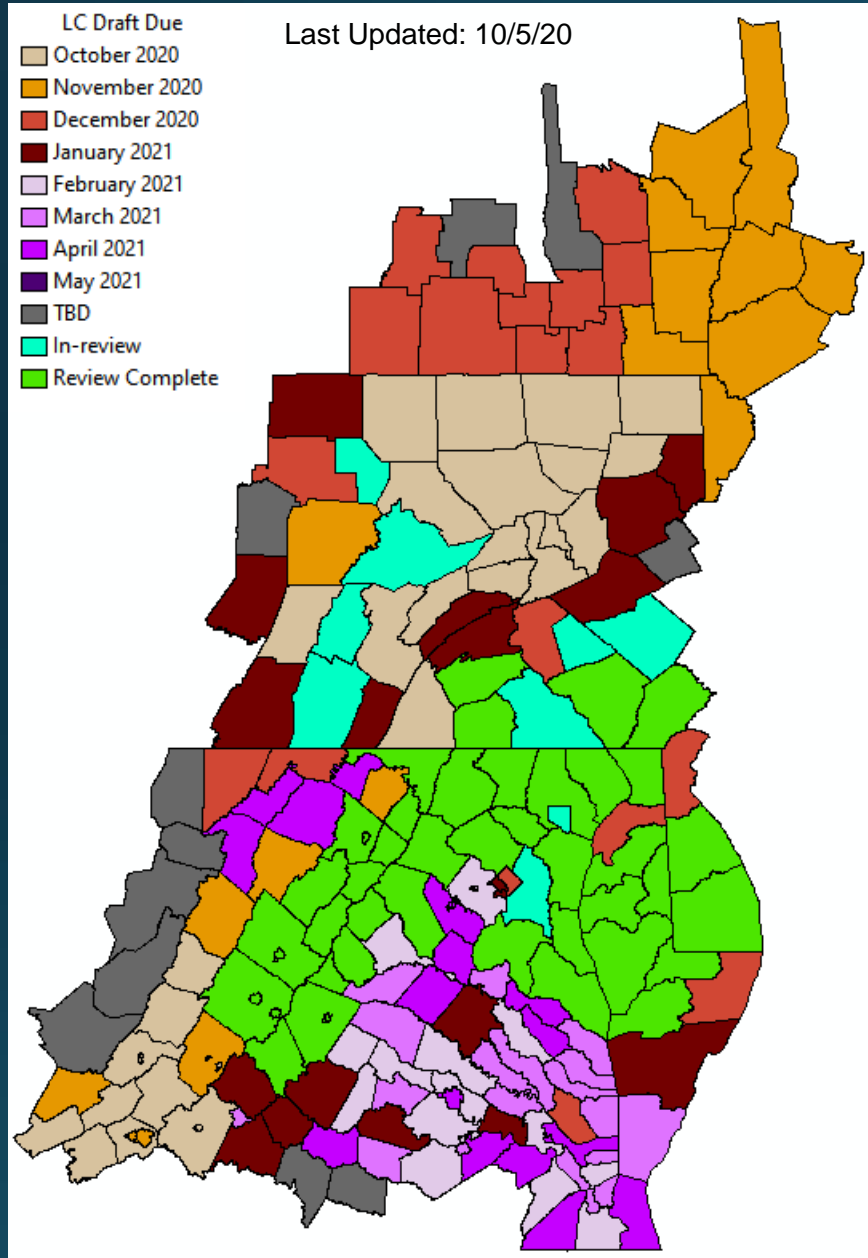
Objective 1 Updates

October 7, 2020: LUWG

Rachel Soobitsky

rsoobitsky@chesapeakeconservancy.org

Land Cover Production Schedule



- Review extended due to COVID-19:

- Carroll County, MD
- Berks County, PA

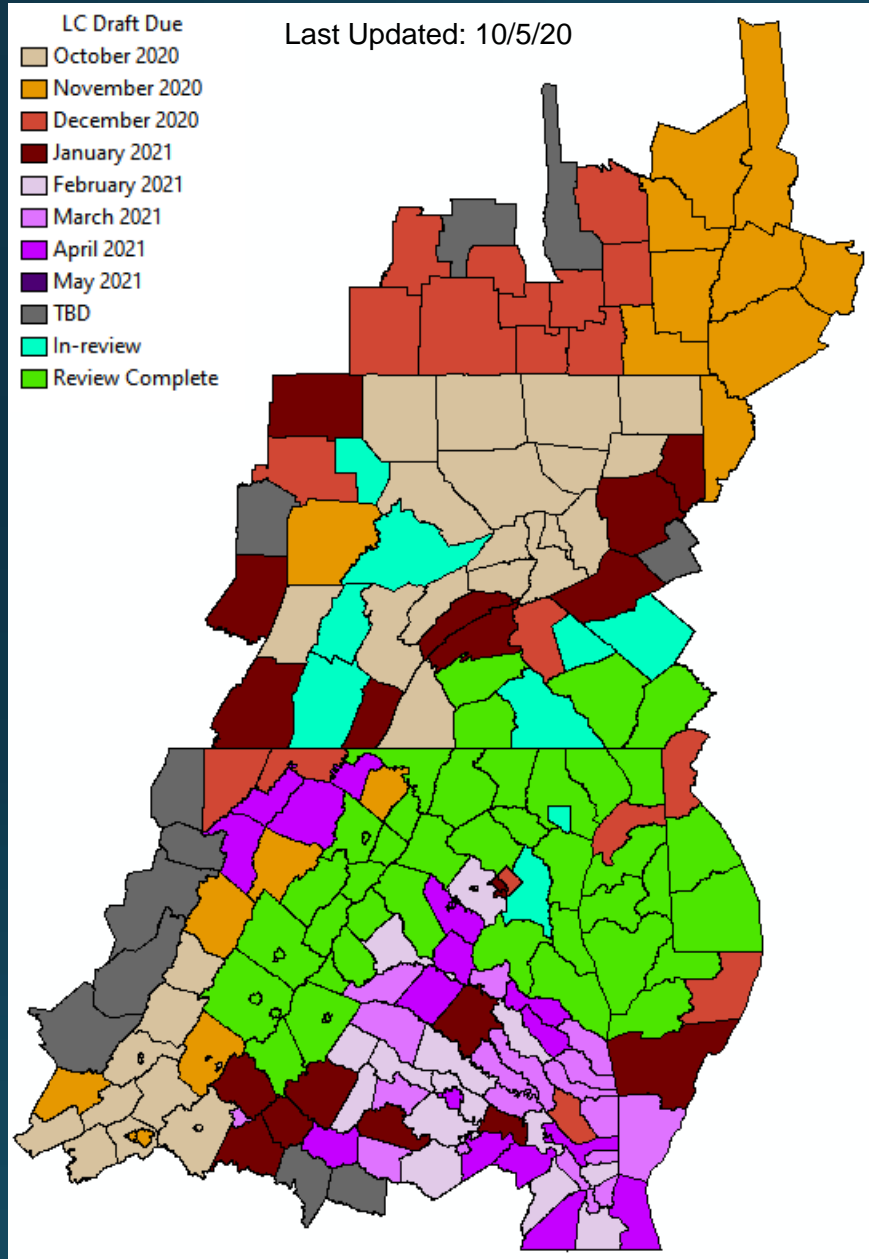
- Review-time passed

(feedback from county in green):

- Baltimore County, MD
- Cecil County, MD
- Queen Anne's, MD
- Talbot, MD
- Somerset, MD
- Wicomico, MD
- Dorchester, MD
- Harford, MD
- Caroline, MD
- Washington, MD
- Adams County, PA
- Chester County, PA
- Cumberland County, PA
- Lancaster, PA
- Kent, DE
- Sussex, DE
- Page, VA
- Waynesboro, VA
- Loudon, VA
- Fauquier, VA

- Anne Arundel, MD
- Charlottesville, VA
- Staunton, VA
- Greene, VA
- Frederick, VA
- Albemarle, VA
- Clarke, VA
- Nelson, VA
- Warren, VA
- Augusta, VA
- Winchester, VA
- Rappahannock, VA
- Madison, VA
- Jefferson, WV
- Rockingham, VA
- Harrisonburg, VA
- Shenandoah, VA
- Calvert, MD
- Charles, MD
- Frederick, MD
- Howard, MD
- St. Mary's, MD
- Montgomery, MD

Land Cover Production Schedule



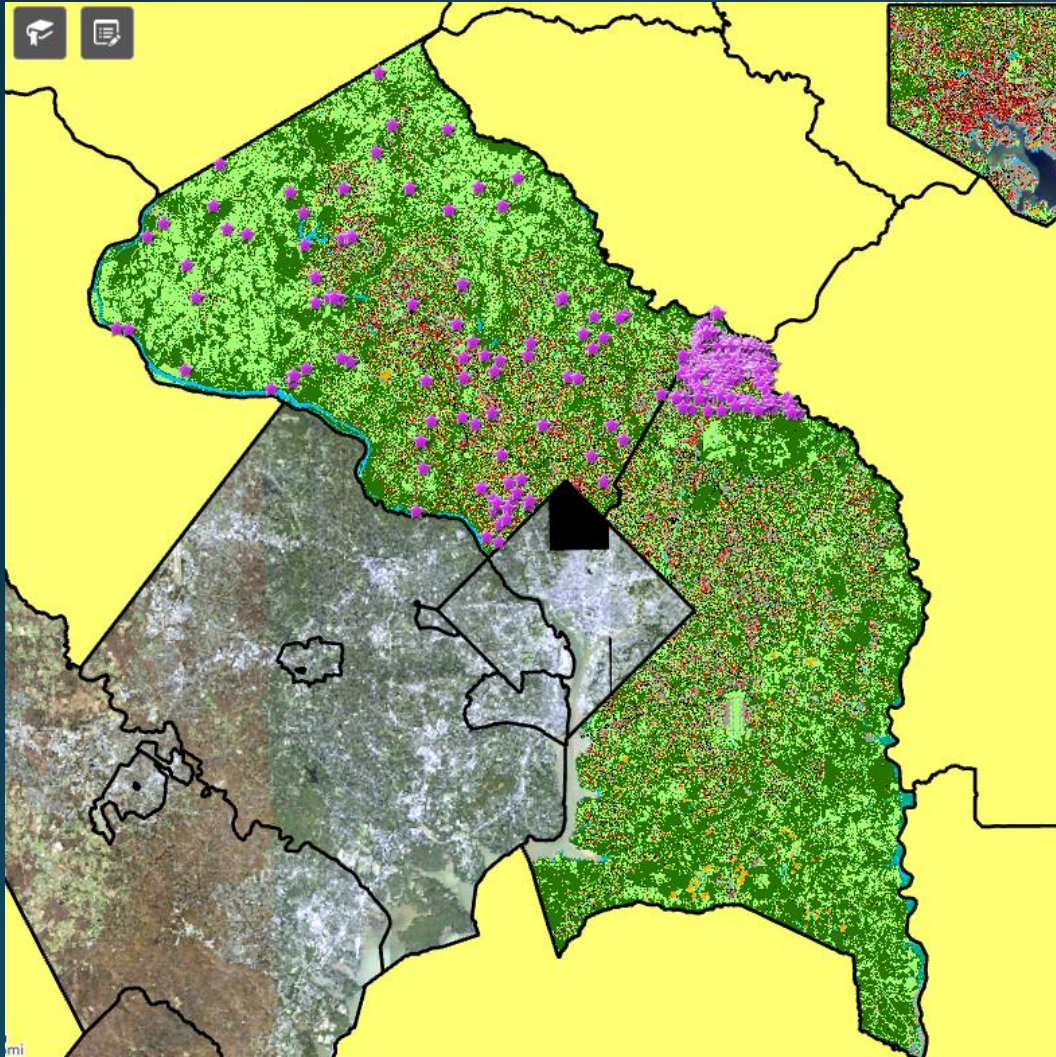
Localities Currently In-Review:

- Prince George's, MD
- Baltimore City, MD
- Lebanon, PA
- York, PA
- Bedford, PA
- Blair, PA
- Cameron, PA
- Centre, PA

Upcoming Localities to Review:

- Bradford, PA
- Cambria, PA
- Clinton, PA
- Columbia, PA
- Huntingdon, PA
- Lycoming, PA
- Mifflin, PA
- Montour, PA
- Northumberland, PA
- Potter, PA
- Sullivan, PA
- Snyder, PA
- Tioga, PA
- Union, PA
- Wyoming, PA

Comments from localities



- PG County:
 - did not have enough time due to: calling too many systematic errors at the beginning (didn't realize at the time they were systematic); and a busy work schedule. Used their own impervious surface layer of similar vintage to compare with the LC

Use-Cases

Your flowpath data effort is undeniably impressive. As with Rachel and her team's efforts for Land Cover, undertaking such a precise analysis for such a massive area is stunning. It goes without saying that this data will be of critical importance for the entire watershed as well as to those outside of it by providing inspiration and best practices in assessing their own. Kudos to all involved on both efforts!

everyone involved should be incredibly proud. I've used data from the Conservancy for years and it has been absolutely critical at times because of its quality. Not only is the land cover a wonderful reference layer but its high-resolution and the depth of QA/QC it undergoes have made it invaluable for some pretty hardcore analysis as well (like estimating pollutant loads for sub-watersheds based on land cover and other data).

to complete on such a large scale. The fact that all of this is done not to produce a valuable product for sale but to serve a greater good is incredibly commendable and I'm certain that it has enabled work of critical importance throughout the watershed that otherwise would not have occurred or would have been hamstrung by the additional cost.

James Wilkerson, Planning Supervisor, Howard County. Email: October 2nd and October 5th, 2020

Questions?

rsoobitsky@chesapeakeconservancy.org