



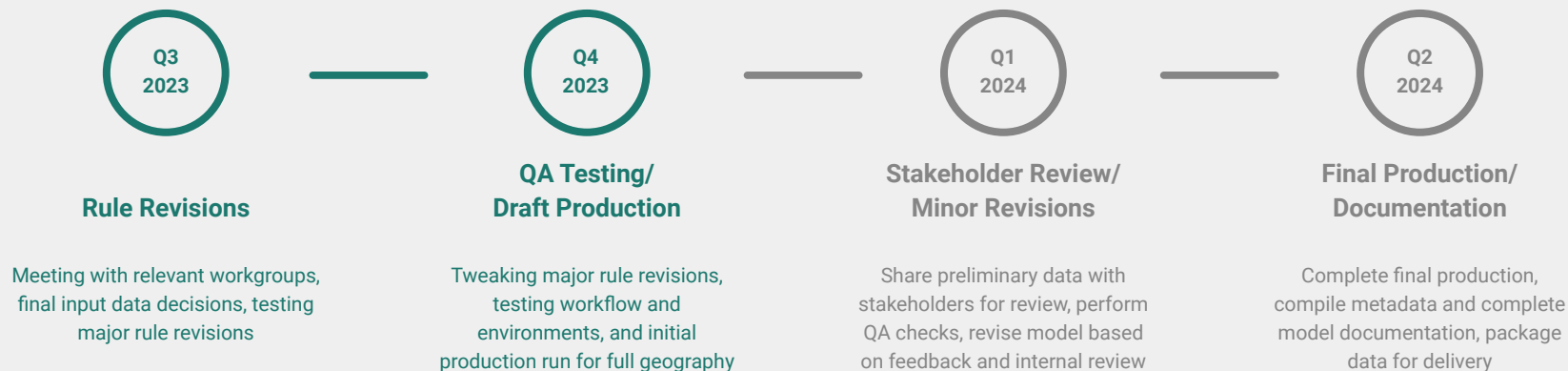
# Major class/rule changes in 2024 edition of Chesapeake Bay Land Use/Land Cover Data

---

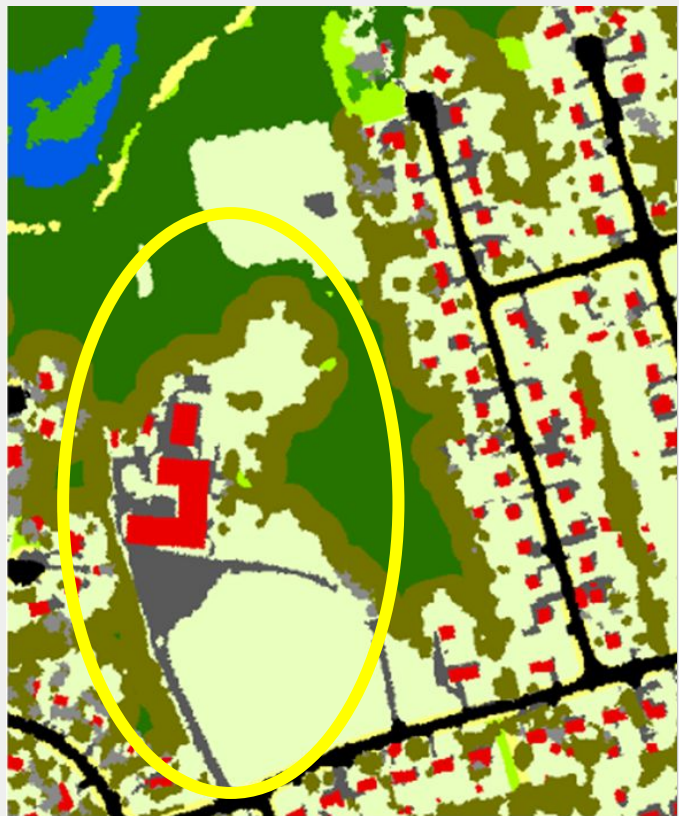
Katie Walker, Chesapeake Conservancy  
CBP Land Use Workgroup | 20 September 2023

# 1-meter Land Use/Land Cover Data Project

## Overall timeline - 2024 edition



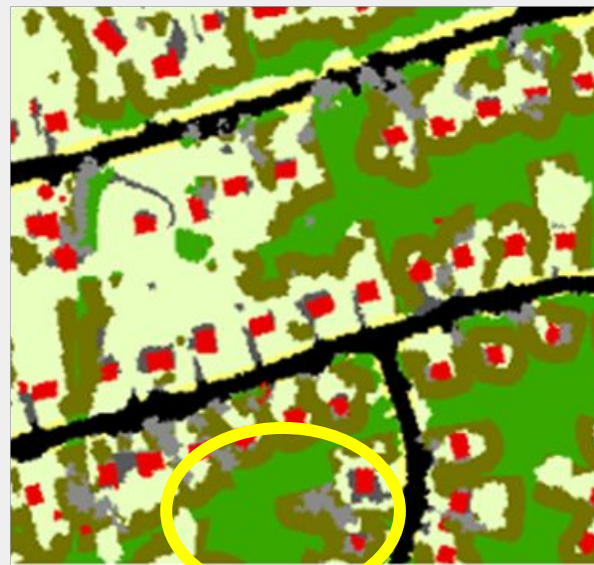
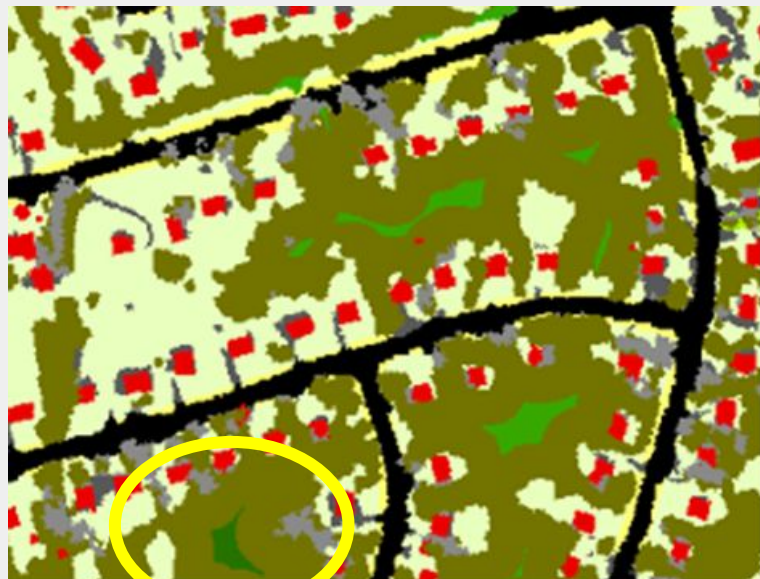
# Tree Canopy over Turf - Large Parcels



## GenLandUse

- Water
- Impervious Roads
- Impervious Structures
- Impervious, Other
- Tree Canopy over Impervious
- Turf Grass
- Pervious Developed, Other
- Tree Canopy over Turf Grass
- Forest
- Tree Canopy, Other
- Harvested Forest
- Natural Succession
- Cropland
- Pasture/Hay
- Extractive
- Wetlands, Tidal Non-forested
- Wetlands, Riverine Non-forested
- Wetlands, Terrene Non-forested

# FIA - TC over Turf is not Forest



## GenLandUse

- Water
- Impervious Roads
- Impervious Structures
- Impervious, Other
- Tree Canopy over Impervious
- Turf Grass
- Pervious Developed, Other
- Tree Canopy over Turf Grass
- Forest
- Tree Canopy, Other
- Harvested Forest
- Natural Succession
- Cropland
- Pasture/Hay
- Extractive
- Wetlands, Tidal Non-forested
- Wetlands, Riverine Non-forested
- Wetlands, Terrene Non-forested



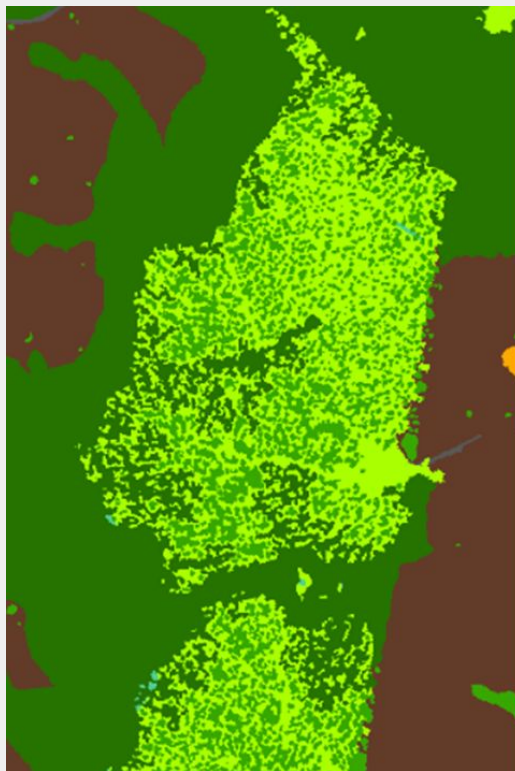
# FIA - Forest width



## GenLandUse

- Water
- Impervious Roads
- Impervious Structures
- Impervious, Other
- Tree Canopy over Impervious
- Turf Grass
- Pervious Developed, Other
- Tree Canopy over Turf Grass
- Forest
- Tree Canopy, Other
- Harvested Forest
- Natural Succession
- Cropland
- Pasture/Hay
- Extractive
- Wetlands, Tidal Non-forested
- Wetlands, Riverine Non-forested
- Wetlands, Terrene Non-forested

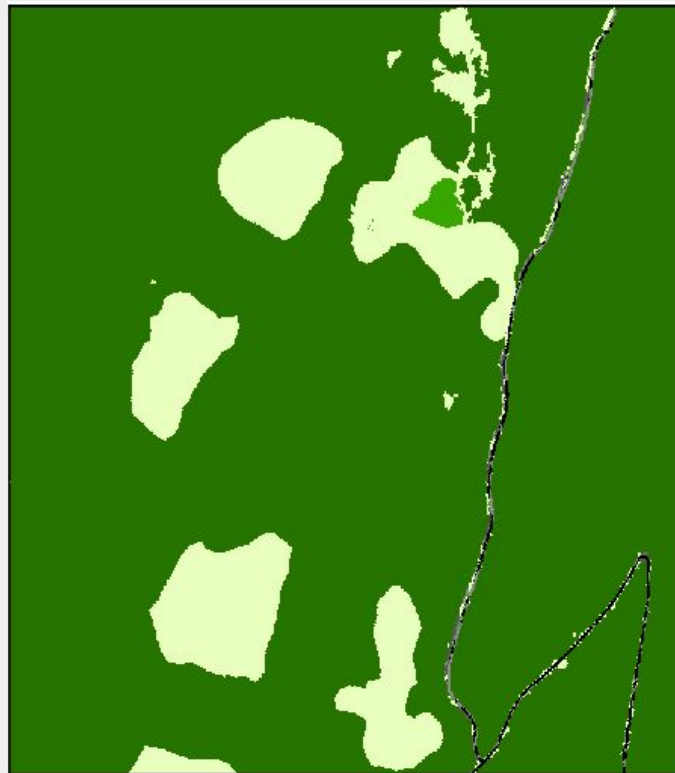
# FIA - Forests in Regenerating Patches



## GenLandUse

- Water
- Impervious Roads
- Impervious Structures
- Impervious, Other
- Tree Canopy over Impervious
- Turf Grass
- Pervious Developed, Other
- Tree Canopy over Turf Grass
- Forest
- Tree Canopy, Other
- Harvested Forest
- Natural Succession
- Cropland
- Pasture/Hay
- Extractive
- Wetlands, Tidal Non-forested
- Wetlands, Riverine Non-forested
- Wetlands, Terrene Non-forested

# Forest Gaps - Harvested (2022 ed.)



-  Turf Grass
-  Natural Succession
-  Harvested Forest
-  Tree Canopy, Other
-  Forest
-  Tree Canopy over Impervious
-  Impervious Roads



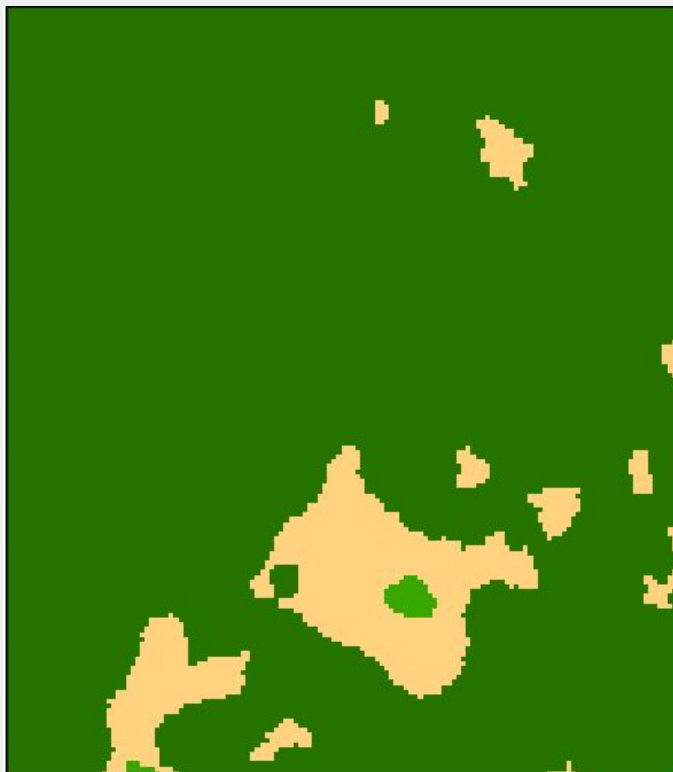
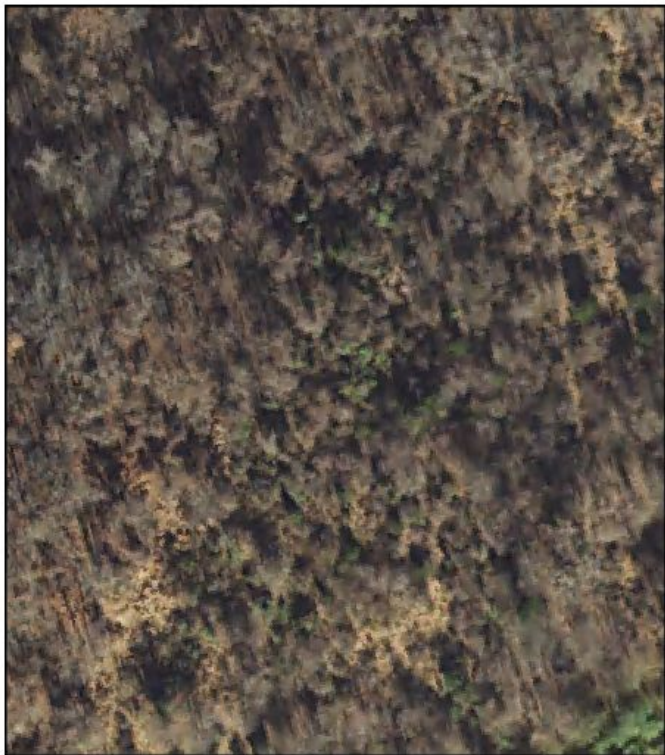
# Forest Gaps - Harvested (2024 ed.)



- Turf Grass
- Natural Succession
- Harvested Forest
- Tree Canopy, Other
- Forest
- Tree Canopy over Impervious
- Impervious Roads

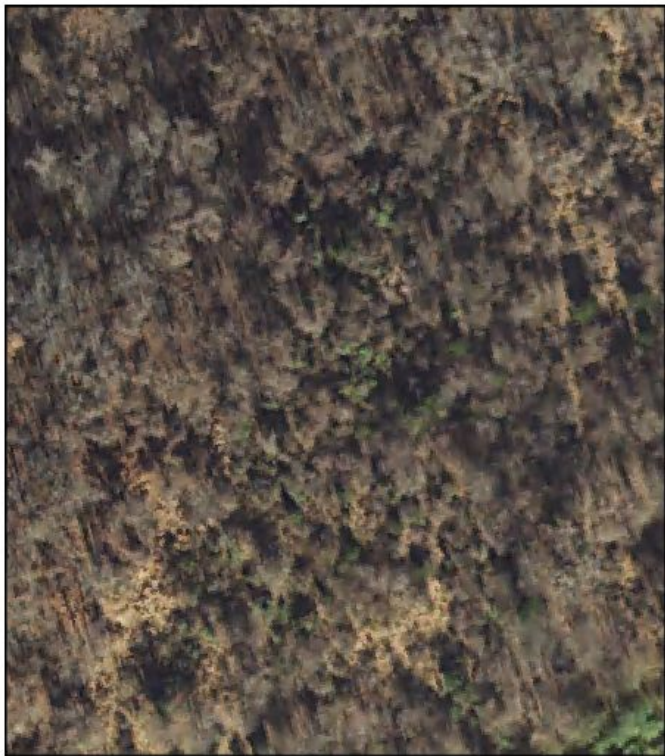


# Forest Gaps - Natural Succession (2022 ed.)



-  Forest
-  Tree Canopy, Other
-  Natural Succession
-  Pasture/Hay

# Forest Gaps - Natural Succession (2024 ed.)



-  Forest
-  Tree Canopy, Other
-  Natural Succession
-  Pasture/Hay

# Solar Arrays





# Solar Arrays



# Extractive Impervious

2022 Ed. other impervious in mining operations (left)

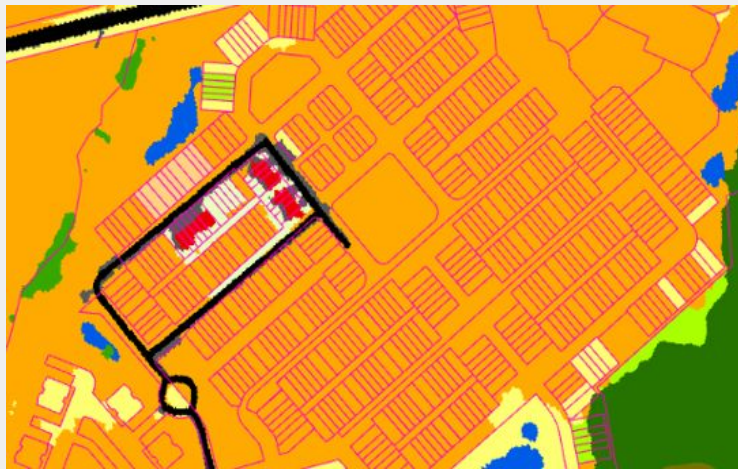
2024 Ed. other impervious in mining operations is extractive impervious (right)



## GenLandUse

- Water
- Impervious Roads
- Impervious Structures
- Impervious, Other
- Tree Canopy over Impervious
- Turf Grass
- Pervious Developed, Other
- Tree Canopy over Turf Grass
- Forest
- Tree Canopy, Other
- Harvested Forest
- Natural Succession
- Cropland
- Pasture/Hay
- Extractive
- Wetlands, Tidal Non-forested
- Wetlands, Riverine Non-forested
- Wetlands, Terrene Non-forested

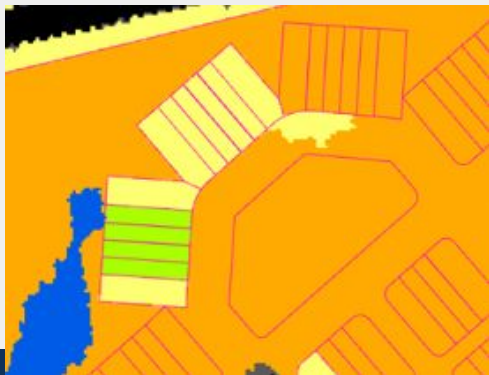
# “Ghost” Parcels - Parcels planned for Development



## GenLandUse

- Water
- Impervious Roads
- Impervious Structures
- Impervious, Other
- Tree Canopy over Impervious
- Turf Grass
- Pervious Developed, Other
- Tree Canopy over Turf Grass
- Forest
- Tree Canopy, Other
- Harvested Forest
- Natural Succession
- Cropland
- Pasture/Hay
- Extractive
- Wetlands, Tidal Non-forested
- Wetlands, Riverine Non-forested
- Wetlands, Terrene Non-forested

2022 Ed. Mix of  
land uses in  
undeveloped  
parcels



2024 ed.





# Animal Operations



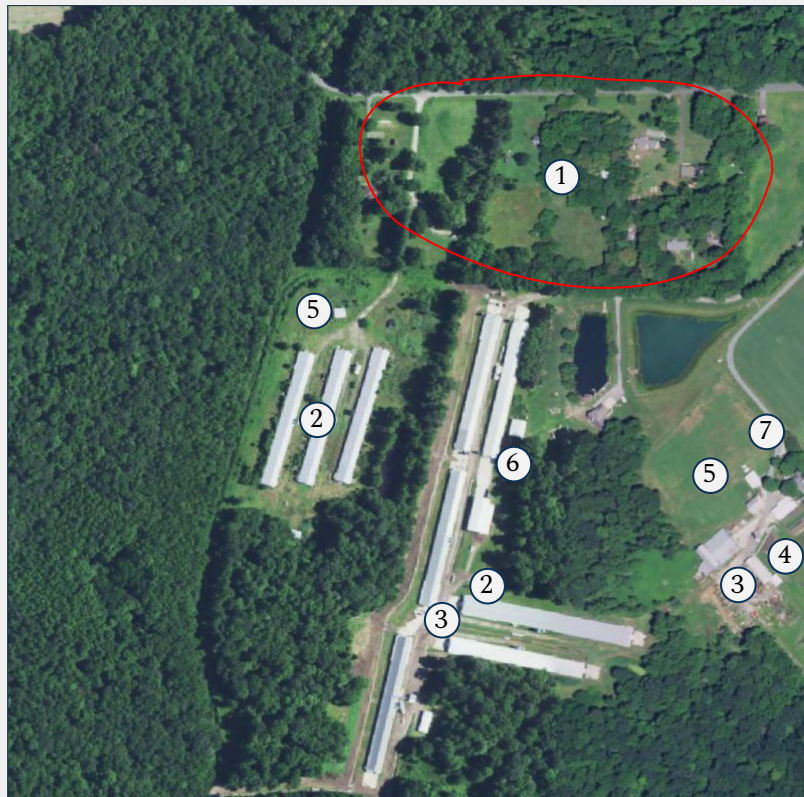
Kent County, DE



- Water
- TC
- Scrub
- Low Veg
- Barren
- Imp Structures
- Other Imp
- Imp Roads
- TC/Structures
- TC/Other Imp
- TC/Imp Roads

Land Cover 2022e

# Land Use Classes in Animal Operations



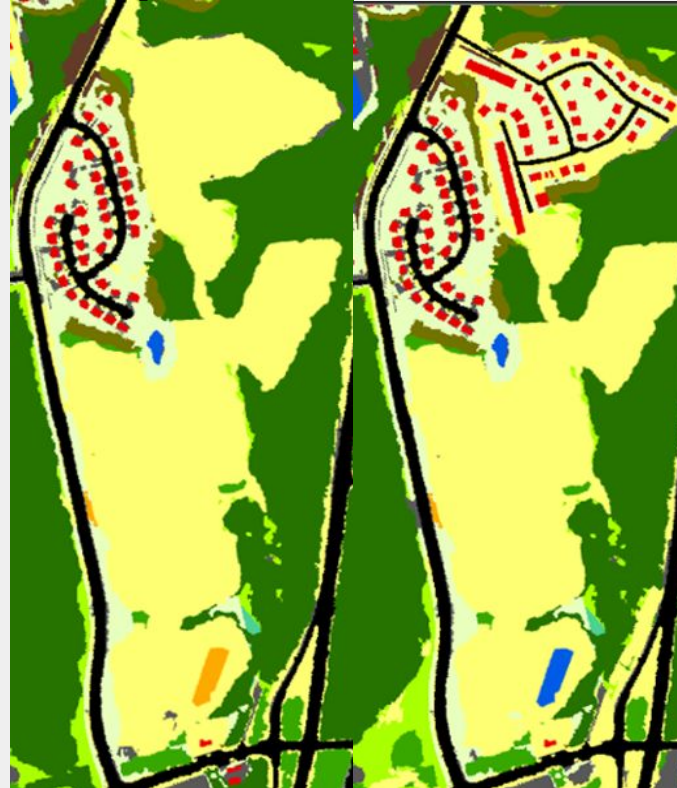
1	Area excluded from Animal ops thru ancillary data
2	Classed as Agricultural Structures
3	Classed as Animal Operation Impervious
4	Classed as Animal Operation Barren
5	Classed as Animal Operation herbaceous
6	Classed as TC over Agricultural Structures
7	Classed as TC over Animal Operation Impervious



# Change - Construction and Ag Confusion

2022 Ed. Construction classed as cropland

2024 Ed. Construction classed as Bare Developed



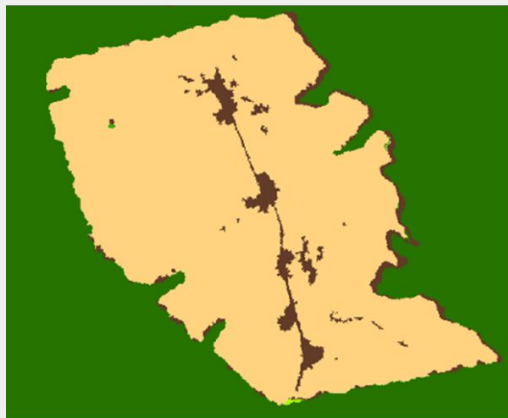
## GenLandUse

- Water
- Impervious Roads
- Impervious Structures
- Impervious, Other
- Tree Canopy over Impervious
- Turf Grass
- Pervious Developed, Other
- Tree Canopy over Turf Grass
- Forest
- Tree Canopy, Other
- Harvested Forest
- Natural Succession
- Cropland
- Pasture/Hay
- Extractive
- Wetlands, Tidal Non-forested
- Wetlands, Riverine Non-forested
- Wetlands, Terrene Non-forested



# Change - Timber Harvest over Time

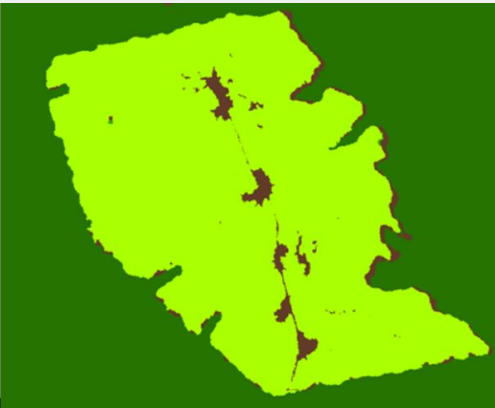
2022 Ed. Pasture to Harvest



Google Earth Imagery:  
2012 - Spring 2015 -  
Summer 2015



2024 Ed. Harvest to Natural Succession



## GenLandUse

- Water
- Impervious Roads
- Impervious Structures
- Impervious, Other
- Tree Canopy over Impervious
- Turf Grass
- Pervious Developed, Other
- Tree Canopy over Turf Grass
- Forest
- Tree Canopy, Other
- Harvested Forest
- Natural Succession
- Cropland
- Pasture/Hay
- Extractive
- Wetlands, Tidal Non-forested
- Wetlands, Riverine Non-forested
- Wetlands, Terrene Non-forested

Katie Walker (she/her/hers)  
Geospatial Program Manager  
Chesapeake Conservancy  
[kwalker@chesapeakeconservancy.org](mailto:kwalker@chesapeakeconservancy.org)  
(443) 345-5985

---

Sarah McDonald (she/her/hers)  
Geographer  
U. S. Geological Survey  
[smcdonald@chesapeakebay.net](mailto:smcdonald@chesapeakebay.net)

# Questions? Feedback?

---

# We'll be back in Sept!