An aerial photograph of a river valley. A town is visible on the left bank, with a baseball field and some industrial buildings. A dam is located in the middle of the river. The right bank is heavily forested. The background shows more of the town and hills.

Land Use Workgroup (LUWG) Coordinator Updates

Jackie Pickford, USGS-CBPO
June 17, 2026

Welcome New Coordination Team!



LUWG Chair

Debbie Cornwell

Maryland Department of Planning



LUWG Vice Chair

Rosa Hance

Choose Clean Water Coalition

Welcome New (and returning) At-Large Members!



Owen Bailey
Eastern Shore Land
Conservancy



Susan Shingledecker
Chesapeake Conservancy
Alternate: Elliott Kurtz



KC Filippino
Hampton Roads Planning
District Commission

Land Use Workgroup Voting Members

Role	Lead Representative	Alternate
DC	George Onyullo, DOEE	Young Tsuei, DOEE
DE	Lori Brown, DNREC	
MD	Deb Sward, MDP	Shannon McKenrick, MDE
NY	Cassie Davis, NYSDEC	Lauren Townley, NYSDEC
PA	Scott Heidel, PA DEP	Tyler Trostle, PA DEP
VA	Arianna Johns, VA DEQ	Rex Robichaux, VA DEQ
WV	Samuel Canfield, WV DEP	
CBC	Marel King, CBC	
EPA / Federal	Tom Butler, EPA	
At-Large	KC Filippino, HRPDC	
At-Large	Susan Shingledecker, Chesapeake Conservancy	Elliott Kurtz, Chesapeake Conservancy
At-Large	Owen Bailey, Eastern Shore Land Conservancy	

Edits/Changes? Please email Julia Fucci (fuccij@chesapeake.org).

Future of the Land Use Workgroup



Land Use Workgroup (LUWG)



AND

Land Use Decision Support Topics

- Will occur during quarterly LUWG meetings.
- Emphasis on applications & communication of the high-resolution land use/land cover data.

Mapping/Modeling Topics

- Will be discussed on an as-needed basis during Office Hours.
- Will include expertise outside LUWG as needed.
- LUWG will be updated during quarterly meetings, but most technical details will be hashed out during Office Hours.
- Official decisions will still require consent from the LUWG.

Priorities for Summer 2026

Management Strategies for Goal [#]: [Goal Name]

Goal

[copy and paste Goal language from the CBWA]

[[Numbering format used throughout the Strategic Plan, Management Strategies, and Workplan documents: [Goal Number].[Outcome Number].[Management Approach Number].[Workplan Activity Number]

*"0" is used as the Outcome number for Goal-level analyses]

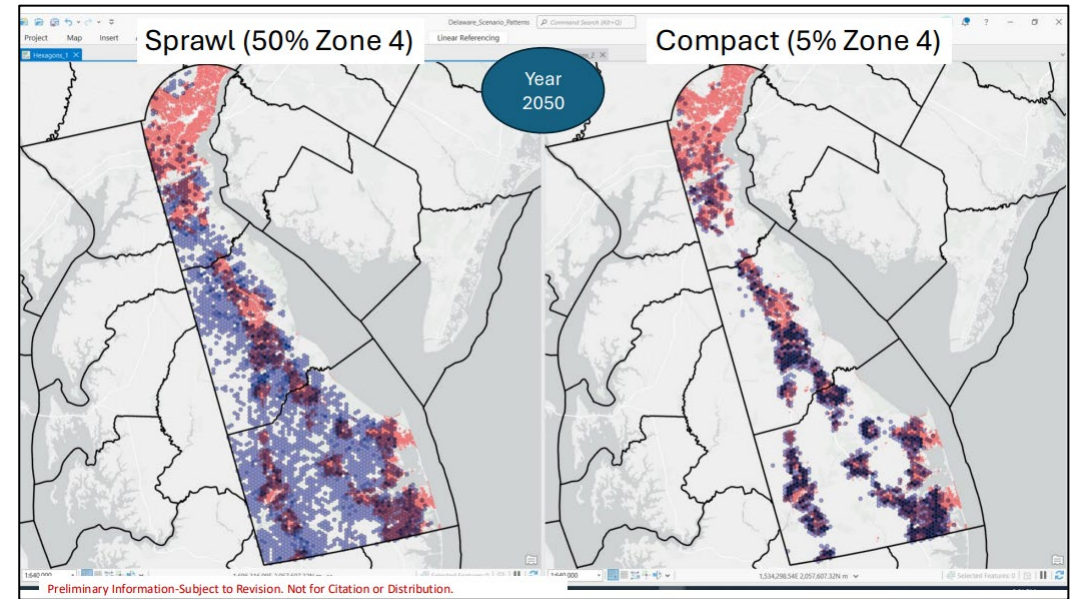
Situation Analysis for Goal [#]: [Goal Name]

In the table below, the Goal Team has summarized the most critical challenges facing each of its Outcomes that are within CBP's ability to impact or influence. The Goal Team and its Workgroups, as appropriate, have identified those challenges show in **bold** as critical for Workgroups to begin addressing within the next six years via the development and implementation of Management Approaches. Challenges associated with Changing Environmental Conditions are denoted with an asterisk (*). [In the table below, add "Challenges" in the first column, then place an "X" to identify which Outcomes are facing that challenge. Do not include all challenges identified by Workgroups. Where feasible, Goal Teams should establish shared terminology to describe challenges that exist at first brainstorm situation analysis discussions about commonalities addressing identified challenges influencing Outcome attainment control, Goal Team documentation challenges that CBP can impact considerations may not apply to

Land Use Planning & Decision Support

Develop and disseminate relevant and actionable land use information in consultation with local governments, to organizations and communities involved in local and regional land use planning. This information should include past, present and future conditions, as well as the potential environmental and socioeconomic consequences of changing conditions.

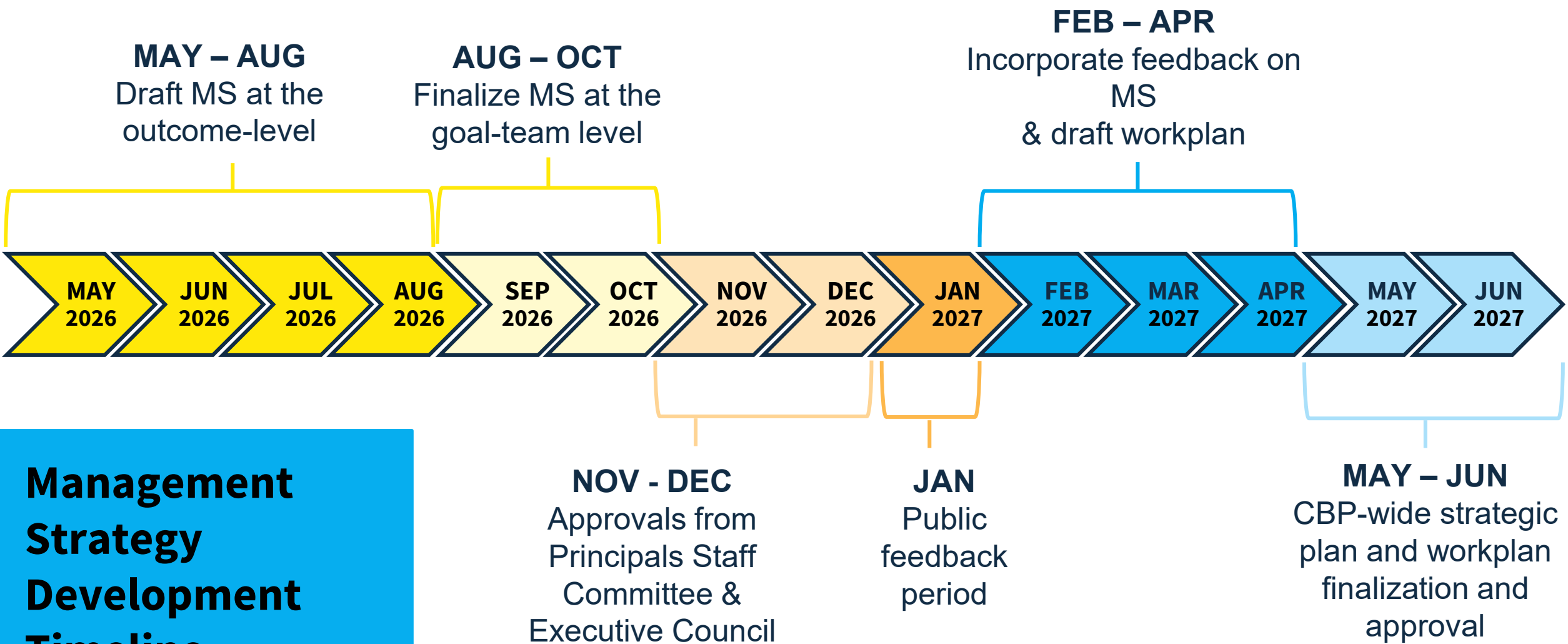
- Develop at least five use cases annually, informed by and provided at the county, watershed or municipal scale to inform land use planning and decisions and maintain the ecological integrity of watersheds supporting good stream health. Use cases can include watershed protection, aquatic connectivity, stormwater, tree canopy, agricultural preservation or redevelopment.
- Highlight at least two widely applicable land use cases annually to showcase best practices and share this information with local governments and partners through diverse communications products.



Management Strategy
Development and Approval

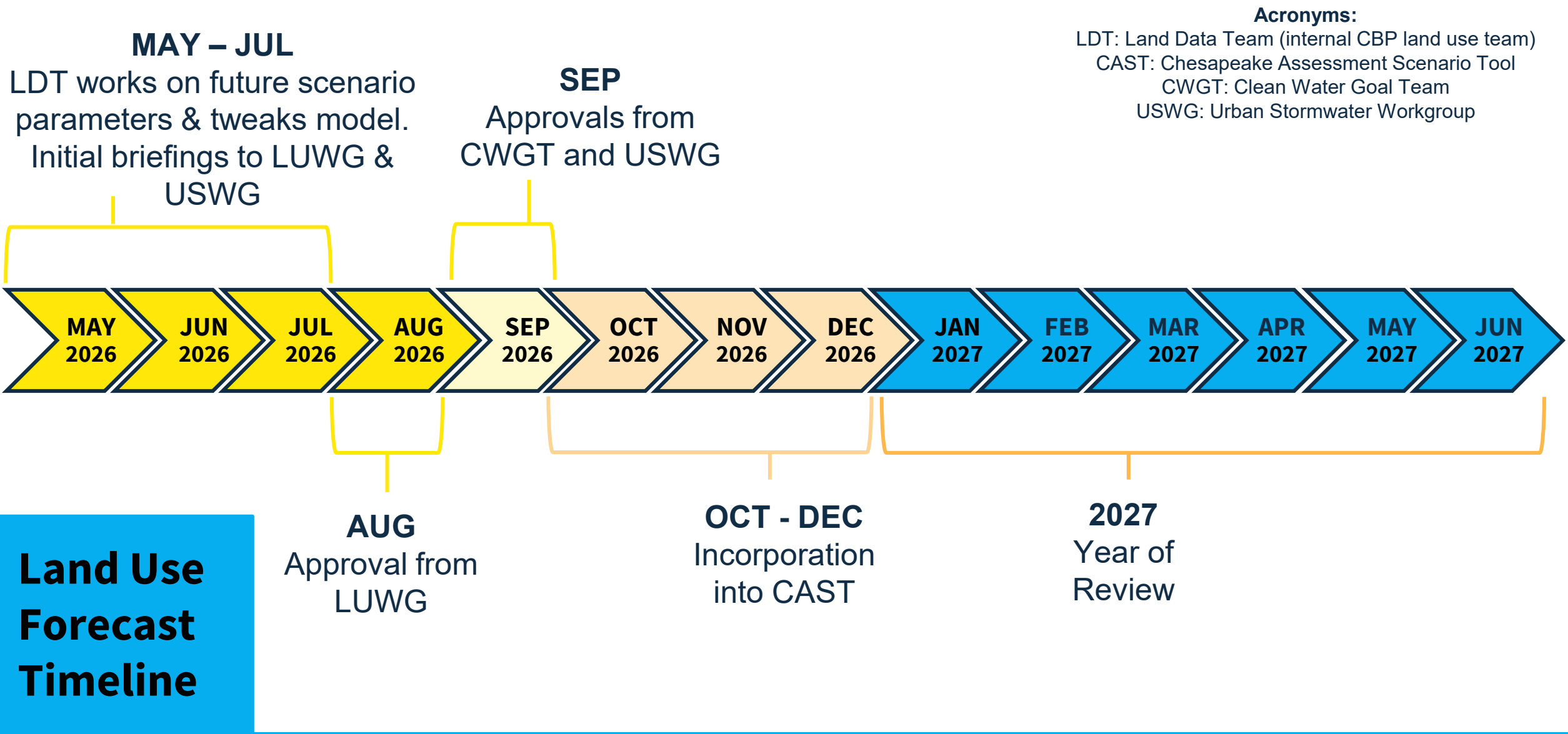
Land Use Forecast
Review & Approval

Timeline

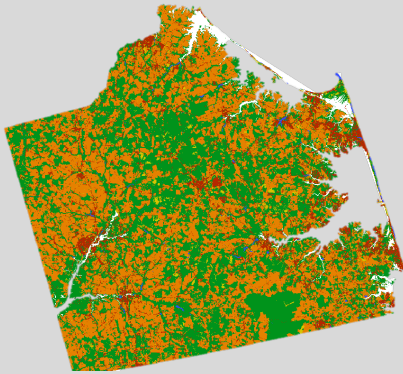


**Management
Strategy
Development
Timeline**

Timeline



Background: CBP Land Use Products



1985 - 2013

**Land Use/Land Cover
Backcast**

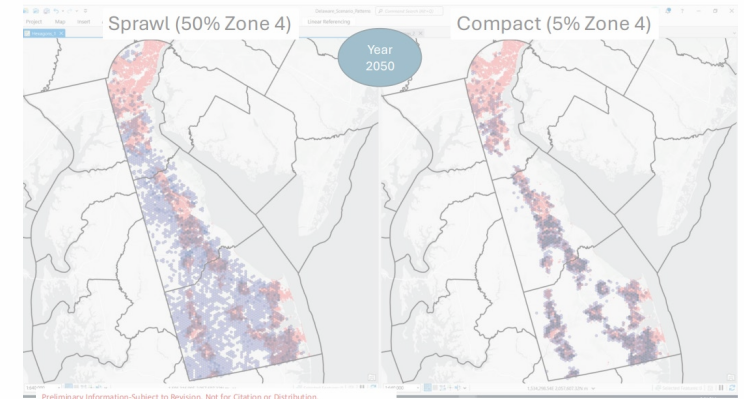
Also known as: “historical
land use”



2013 - 2022

**Land Use/Land Cover and Change
Data**

Also known as: “LULC”, “land use
data”, “land use change data”,
“current conditions”, “high-res data”



2022 - 2075

Land Use/Land Cover Forecasts

Also known as: “Chesapeake Bay
Land Change Model”, “CBLCM”,
“future scenarios”

1985

2013

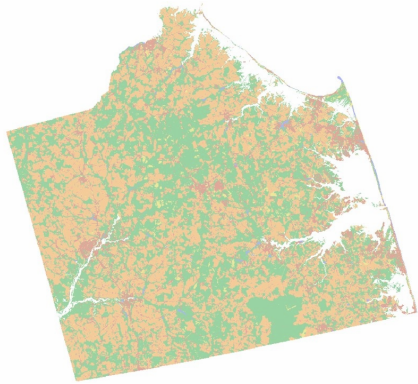
2022

2075

Background: CBP Land Use Products

1985 - 2022

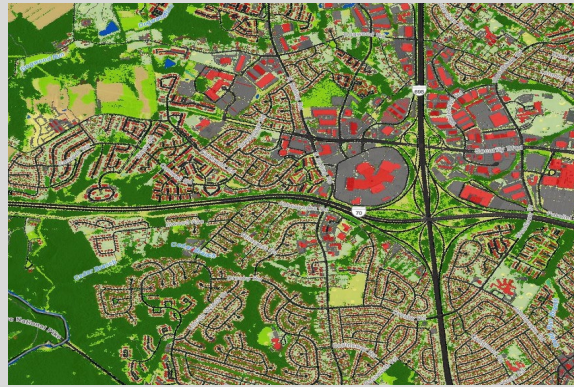
Also known as: “land use time series”



1985 - 2013

**Land Use/Land Cover
Backcast**

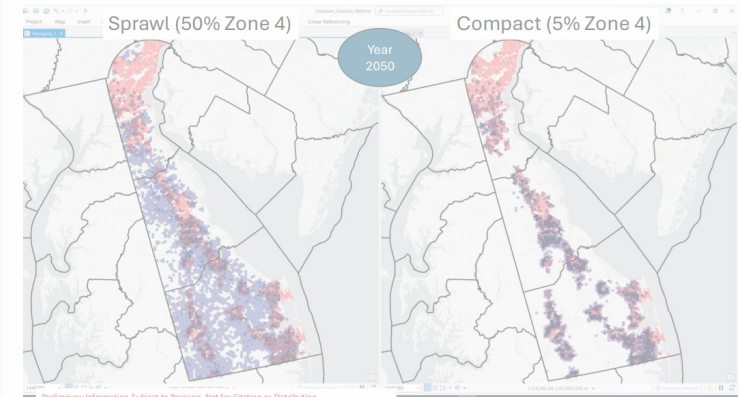
Also known as: “historical
land use”



2013 - 2022

**Land Use/Land Cover and Change
Data**

Also known as: “LULC”, “land use
data”, “land use change data”,
“current conditions”, “high-res data”



2022 - 2075

Land Use/Land Cover Forecasts

Also known as: “Chesapeake Bay
Land Change Model”, “CBLCM”,
“future scenarios”

1985

2013

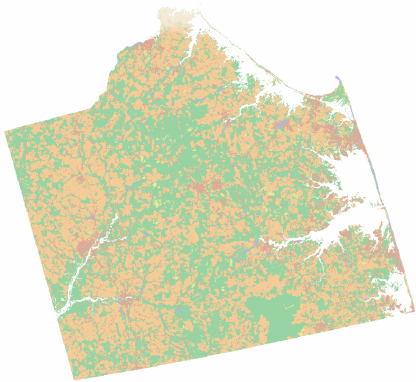
2022

2075

Background: CBP Land Use Products

1985 - 2022

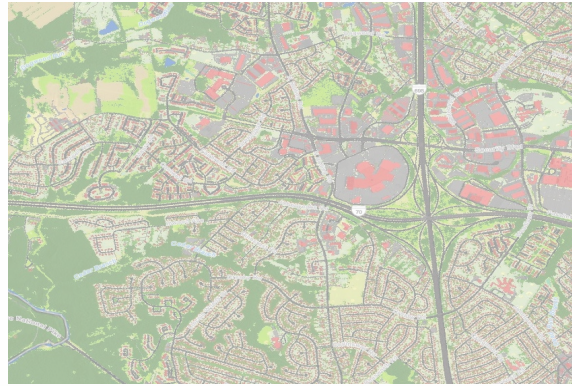
Also known as: “land use time series”



1985 - 2013

**Land Use/Land Cover
Backcast**

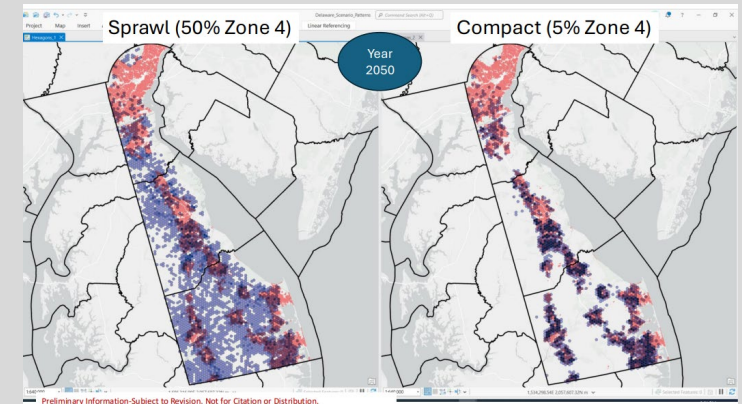
Also known as: “historical
land use”



2013 - 2022

**Land Use/Land Cover and Change
Data**

Also known as: “LULC”, “land use
data”, “land use change data”,
“current conditions”, “high-res data”



2022 - 2075

Land Use/Land Cover Forecasts

Also known as: “Chesapeake Bay
Land Change Model”, “CBLCM”,
“future scenarios”

1985

2013

2022

2075

Acronyms

- CAST: [Chesapeake Assessment Scenario Tool](#)
- CBC: Chesapeake Bay Commission
- CBP: Chesapeake Bay Program (partnership)
- CBPO: Chesapeake Bay Program Office
- CWGT: [Clean Water Goal Team](#) (formerly Water Quality Goal Implementation Team)
- DNREC: Delaware Department of Natural Resources and Environmental Control
- DOEE: [D.C.] Department of Energy and Environment
- EC: [Executive Council](#)
- EPA: [U.S.] Environmental Protection Agency
- HRPDC: Hampton Roads Planning District Commission
- LDT: Land Data Team (internal CBPO land use team)
- MDE: Maryland Department of Environment
- MDP: Maryland Department of Planning
- NYSDEC: New York State Department of Environmental Conservation
- PA DEP: Pennsylvania Department of Environmental Protection
- PSC: [Principals Staff Committee](#)
- USWG: [Urban Stormwater Workgroup](#)
- USGS: United States Geological Survey
- VA DEQ: Virginia Department of Environmental Quality
- WVDEP: West Virginia Department of Environmental Protection