

# Lancaster County PA

Preliminary Phase 6 land use methods for Lancaster County, Pennsylvania.

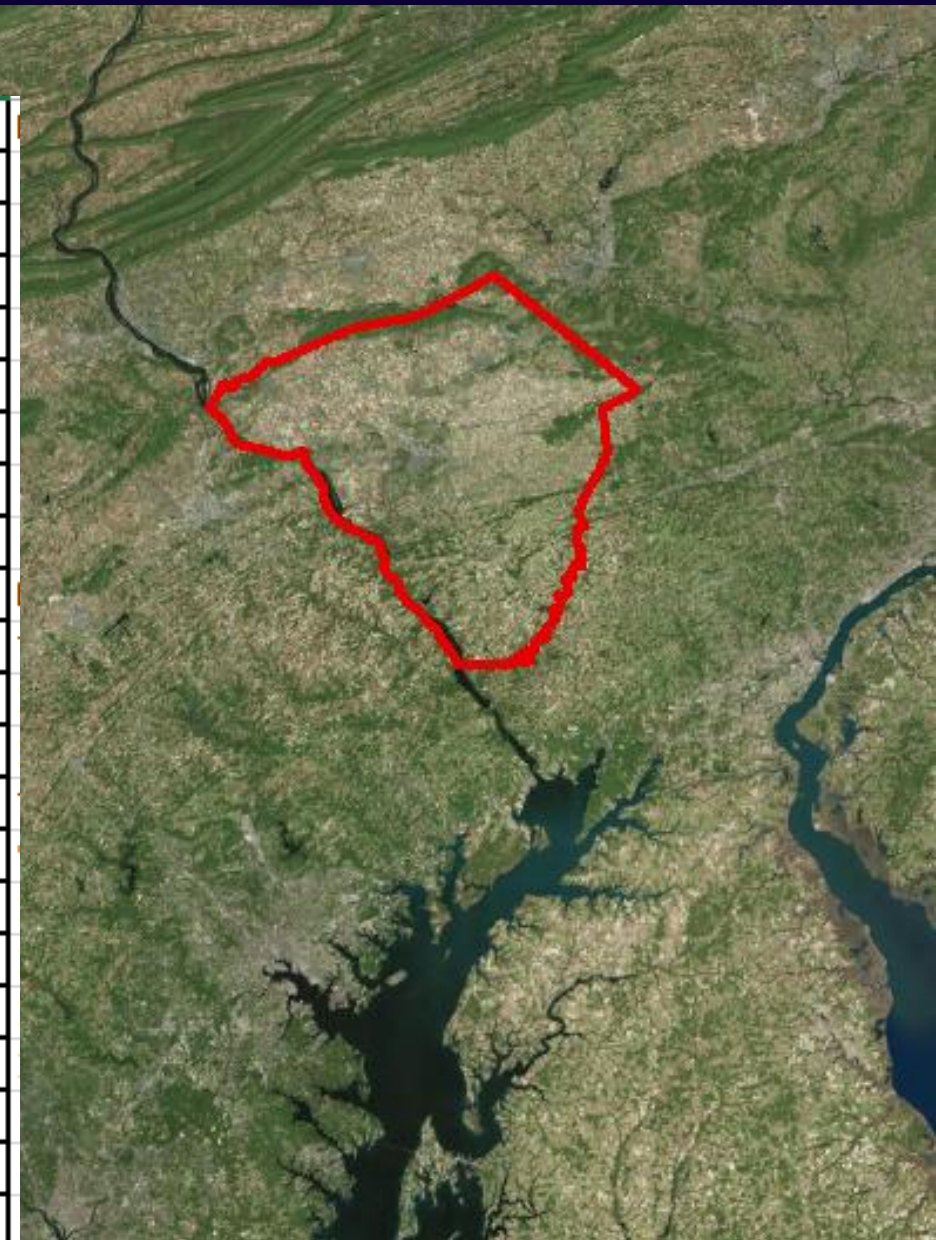
Renee Thompson – USGS Chesapeake Bay Program Office

[rthompson@chesapeakebay.net](mailto:rthompson@chesapeakebay.net)

410-267-5749

# Local Data downloaded from PASDA

Shapefile Name	Type	Potential P6 application
LanCo_TrainStations	Point File	1.1.2 Buildings, parking lots, etc.
DEMPts	Points	
Railroad	Line	1.1.1 Roads
Buildings2005	Polygon	1.1.2 Buildings, parking lots, etc.
Drives2008	Polygon	1.1.2 Buildings, parking lots, etc.
ParkingLots2008	Polygon	1.1.2 Buildings, parking lots, etc.
RoadEdge2008	Polygon	1.1.1 Roads
Quarries	Polygon	1.4 Extractive
Act319Parcels	Polygon	3.1 Forest OR Ag depending on attribute table
LanCo_Easements	Polygon	
LanCo_AgSecurityZones	Polygon	
LanCo_FloodZones	Polygon	
LanCo_LandCover2008	Polygon	
LanCo_Muni	Polygon	
LanCo_ParksAnd_Rec	Polygon	
LanCo_UGS_VGA	Polygon	
LanCo_Zoning	Polygon	
Ianpa2008	30m grid	
LanCoZoning	Polygon	
Lancover_2010Lancaster	1m grid	Direct use along with other data, aggregate to 10m
LancasterCountyLulc201403	Polygon	Develop Urban Footprint



# Created a “Developed Mask”

		Lancaster County LULC Crosswalk* (LancasterCountyLulc201403.shp)
Level II	Level III	
1.1 Impervious	1.1.1 Roads	ID 140 Transportation and utilities
	1.1.2 Buildings, parking lots, etc.	ID 111 Residential <2/ac; 112 Residential 2.1-7/ac; 113 Residential >7/ac; 114 Farmsteads; 120 Commercial and services; 130 Industrial; 150 Unknown industrial; 160 Mixed Urban or built up land; 170 (other/unknown?); 180 Institutional
1.2 Pervious	1.2.1 Turf	190 Recreational; 310 Herbaceous (open, grassy large lawns and non-church cemeteries); 320 Shrub/Brush; 330 Mixed Cover; 730 Sandy (non-beach); 740 Rock outcrops; 770 Mixed barren and vegetated (basic disturbed class)
	1.2.2 Tree canopy	
	1.2.3 Open space	
1.3 Construction		760 Transitional (under construction)
1.4 Extractive		750 Mines/quarries/pits and junk yards/landfills



# Land Use Land Cover 2014 – “Developed Mask”

  LancasterCountyLulc201403

 <all other values>

ID

 0

 1.1.1 Roads

 1.1.2 Buildings, Parking Lots, Etc.

 1.2.3 Open Space

 1.3 Construction

 1.4 Extractive

 210

 2.2.3 Pasture and pastured cropland

 2.3 Specialty \_Other crops

 2.4.1 Animal (CAFO \_AFO)

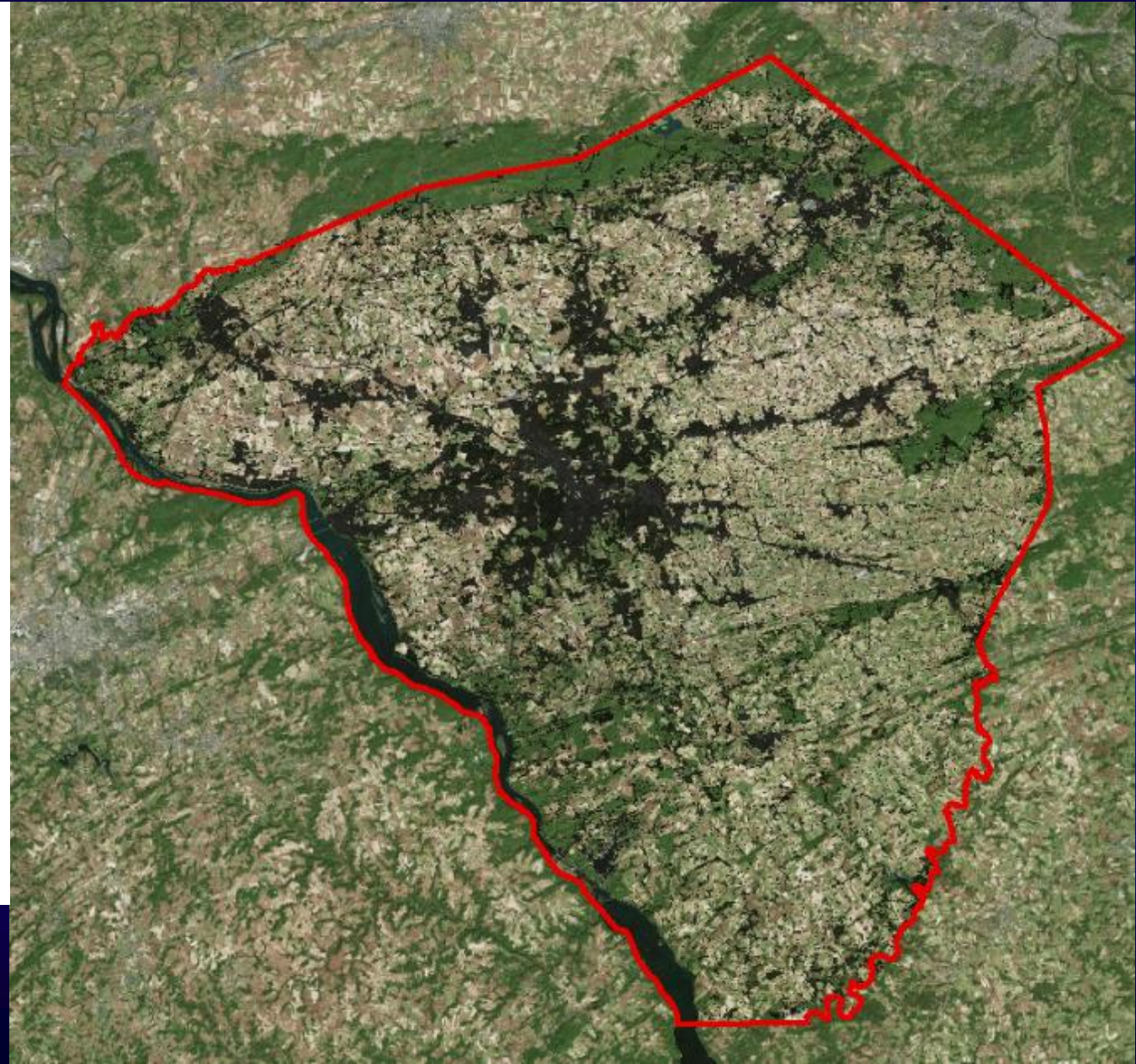
 3.1 Forests

 3.2 Wetlands

 3.2.3 Non-tidal woody

 3.3 Water (non-tidal)

 997







**Developed Area, Driveways, Road Edge,  
Parking lots and Building Footprints**





# Impervious Surface – Roads

Local Data:  
Road Edge 2008  
Drives 2008  
Augmented by 2014  
land cover and  
NAVTEQ



# Impervious Surface – Other

Local Data:  
Buildings 2005  
Parking Lots  
2008  
PLUS 2014  
Land Cover





Extractive:

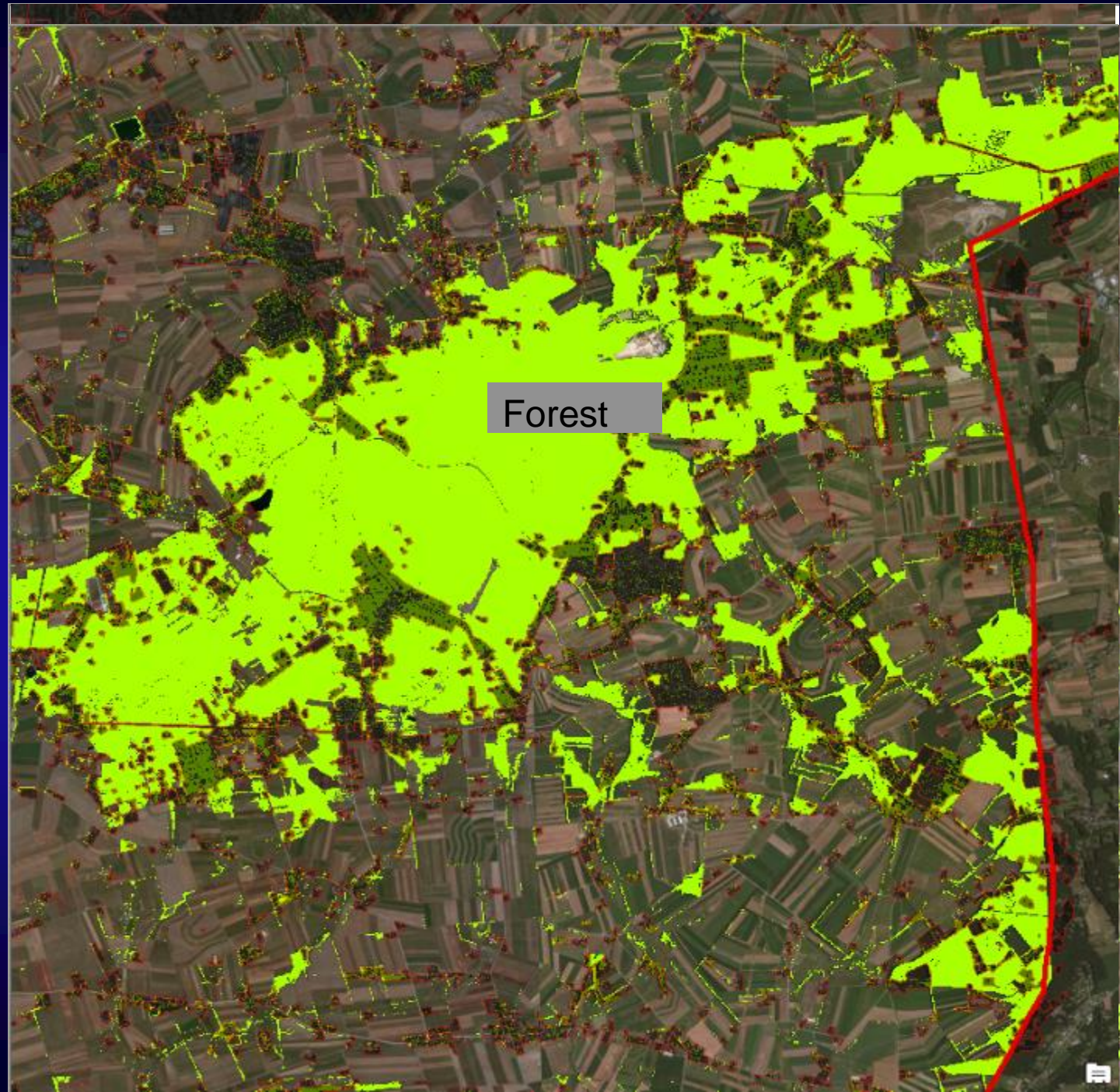
Local Data:  
Quarries  
Polygon  
converted to 1m  
grid, aggregated  
to 10m.



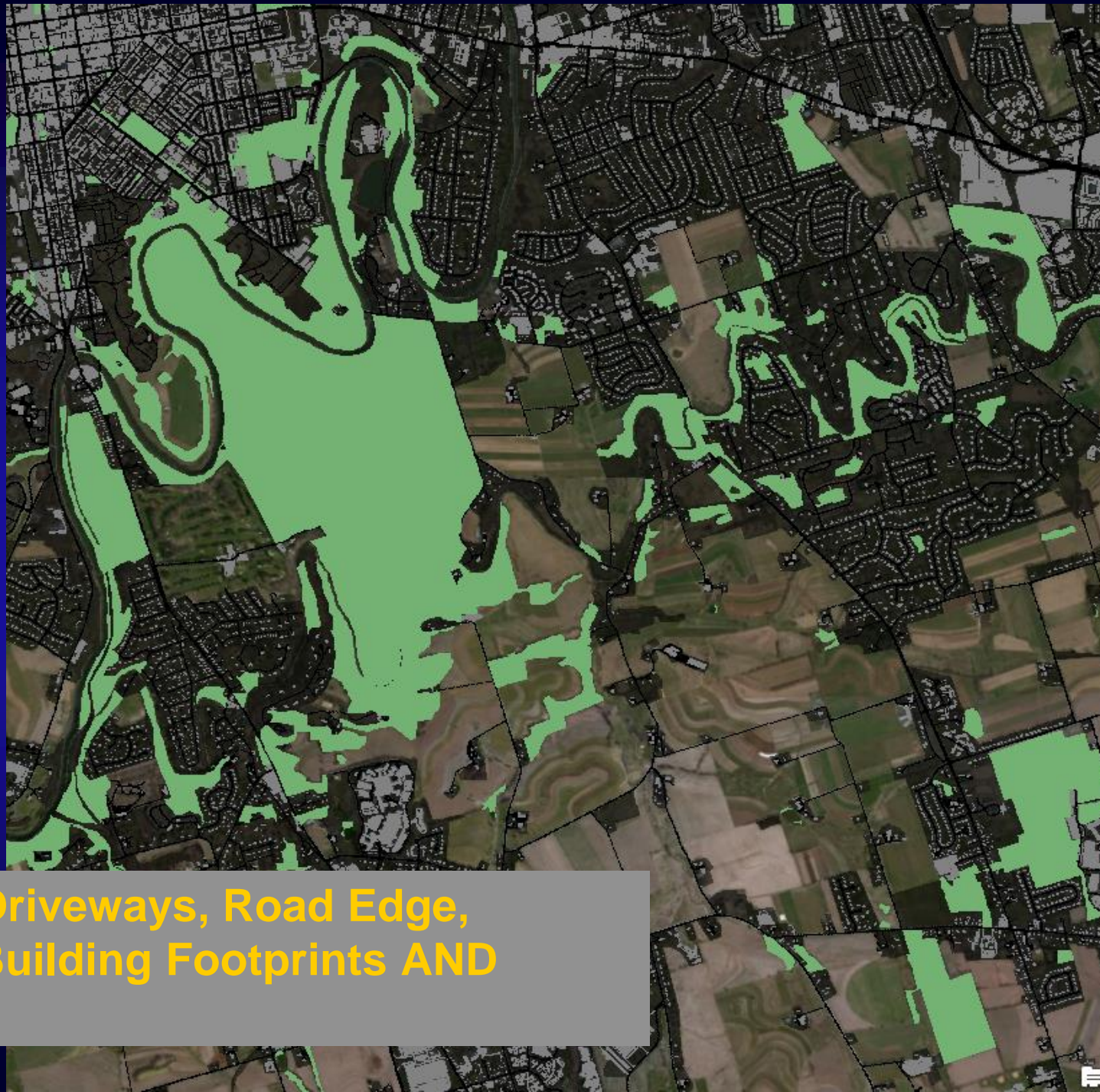


# Tree Canopy and Forests

Local Data:  
2014 Landcover  
“tree canopy  
class”







Developed Area, Driveways, Road Edge,  
Parking lots and Building Footprints AND  
Natural Land uses



# Local Data and Phase 6 crosswalk

Impervious surfaces-roads

Impervious surfaces-other

Extractive (if such data were provided)

Turf grass

Tree canopy

Open space

Agriculture

Forests

Water

Shapefile Name	Type	Potential P6 application
LanCo_TrainStations	Point File	1.1.2 Buildings, parking lots, etc.
DEMPts	Points	
Railroad	Line	1.1.1 Roads
Buildings2005	Polygon	1.1.2 Buildings, parking lots, etc.
Drives2008	Polygon	1.1.2 Buildings, parking lots, etc.
ParkingLots2008	Polygon	1.1.2 Buildings, parking lots, etc.
RoadEdge2008	Polygon	1.1.1 Roads
Quarries	Polygon	1.4 Extractive
Act319Parcels	Polygon	3.1 Forest OR Ag depending on attribute table
LanCo_Easements	Polygon	
LanCo_AgSecurityZones	Polygon	
LanCo_FloodZones	Polygon	
LanCo_LandCover2008	Polygon	
LanCo_Muni	Polygon	
LanCo_ParksAnd_Rec	Polygon	
LanCo_UGS_VGA	Polygon	
LanCo_Zoning	Polygon	
lanpa2008	30m grid	
LanCoZoning	Polygon	
Lancover_2010Lancaster	1m grid	Direct use along with other data, aggregate to 10m
LancasterCountyLulc201403	Polygon	Develop Urban Footprint