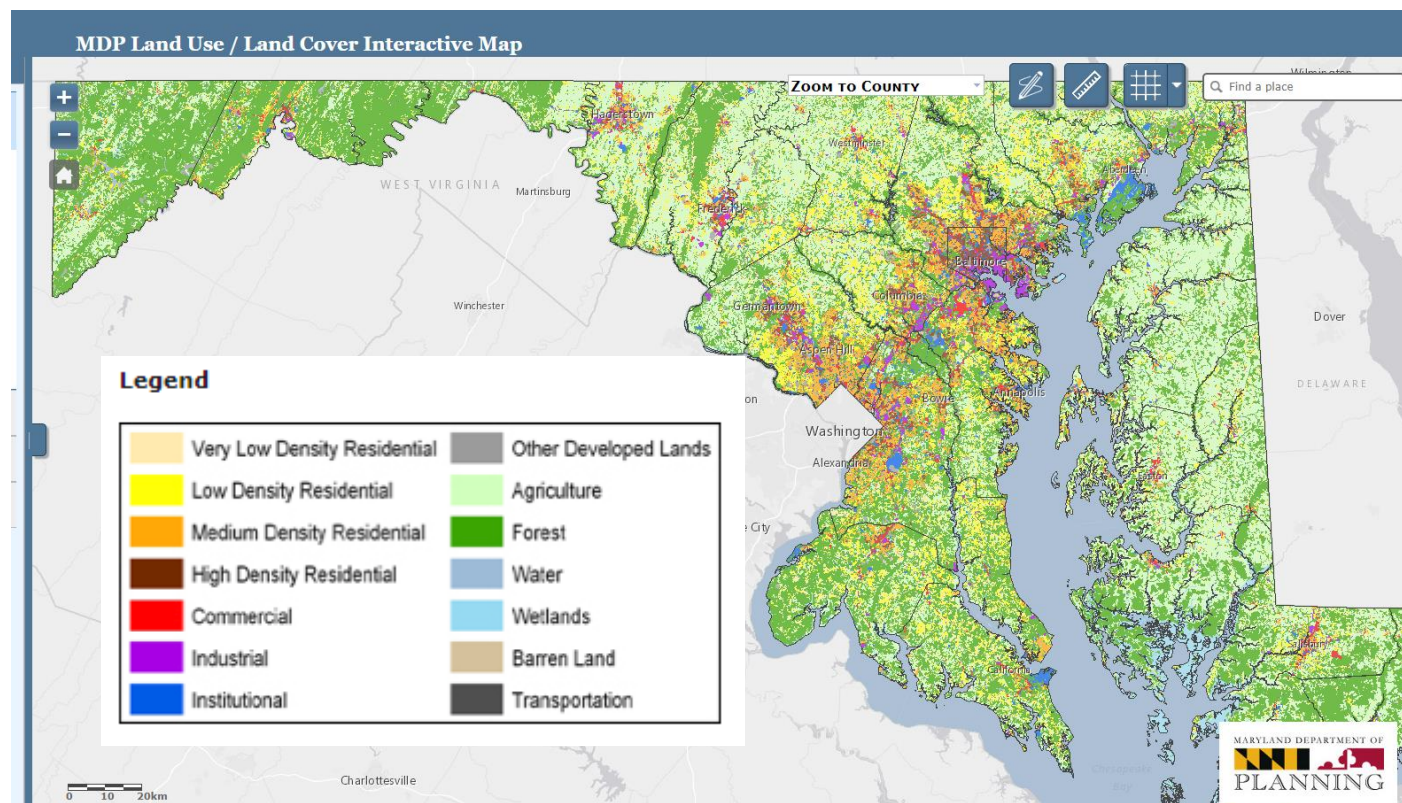


# MARYLAND STATEWIDE LAND USE MAP UPDATE

Deborah Sward  
Geospatial Data & Analysis Unit  
March 20, 2024

# 2010 LAND USE LAND COVER PRODUCT



Webpage: <https://planning.maryland.gov/Pages/OurWork/landuse.aspx>

Data Download: <https://planning.maryland.gov/Pages/OurProducts/DownloadFiles.aspx>

# HISTORICAL USES OF MDP'S LULC MAP

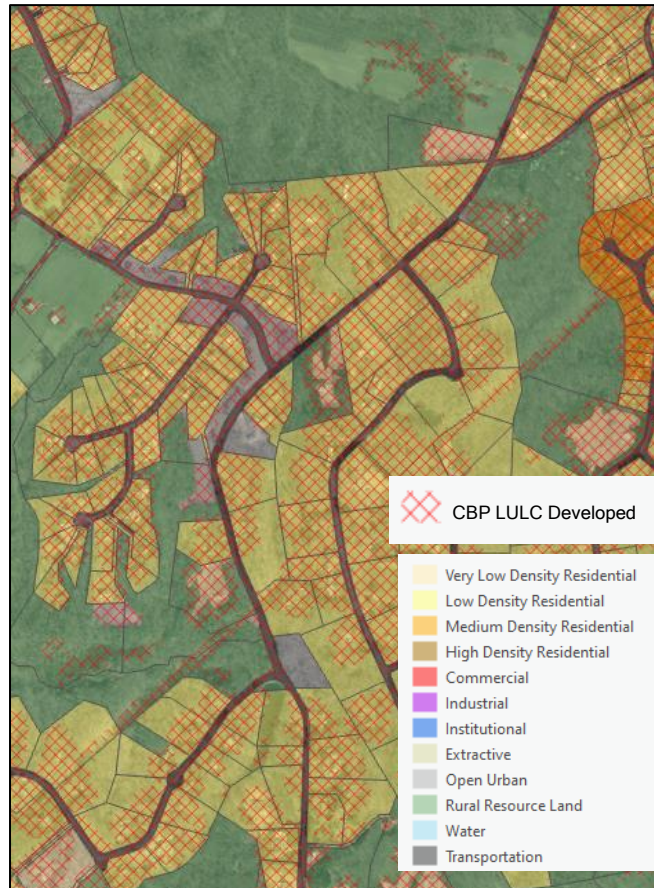
Planning Activity	Use
Comprehensive planning	Existing land use distribution Land use change
Pollutant loading analyses	Loading by land use
Development capacity, land preservation targeting, and land stability analyses	Where does development capacity or pressure exist?
Transportation planning	Trip generation/distribution NEPA Indirect and Cumulative Effects Analyses

# HISTORICAL LAND USE CLASSIFICATIONS AND UPDATES

Urban/Developed Land Uses	Remaining Undeveloped Resource Land
Very Low Density Residential (< 0.2 du/ac) <ul style="list-style-type: none"><li>Primarily Agriculture</li><li>Primarily Forest</li></ul>	<div>Agriculture Forest Water Wetland Barren</div> <p>Remove rural/undeveloped subclassifications</p>
Low Density Residential (0.2-2 du/ac)	
Medium Density Residential (2-8 du/ac)	
High Density Residential (>8 du/ac)	
Commercial	
Industrial	
Institutional	
Other Developed Lands <ul style="list-style-type: none"><li>Transportation</li><li>Extractive</li><li>Open urban land</li></ul>	

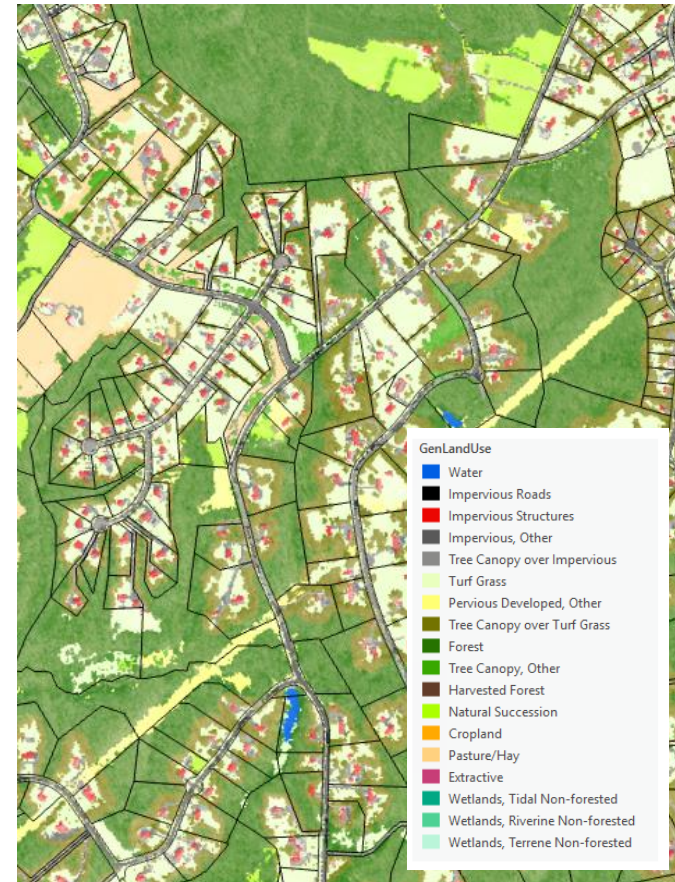


# LAND USE PRODUCT COMPARISON



Draft Land Use (MDP)

*Images show hypothetical example. Actual land uses may differ.*



Land Use Land Cover  
(Chesapeake Bay Program)

# METHODOLOGY

## Inputs:

- GIS parcel polygons and tax assessment data
- Chesapeake Bay Program High-Resolution LULC (CBP LULC)
- County/municipal data, 2010 MDP LULC map, and other ancillary data

## Key Updates:

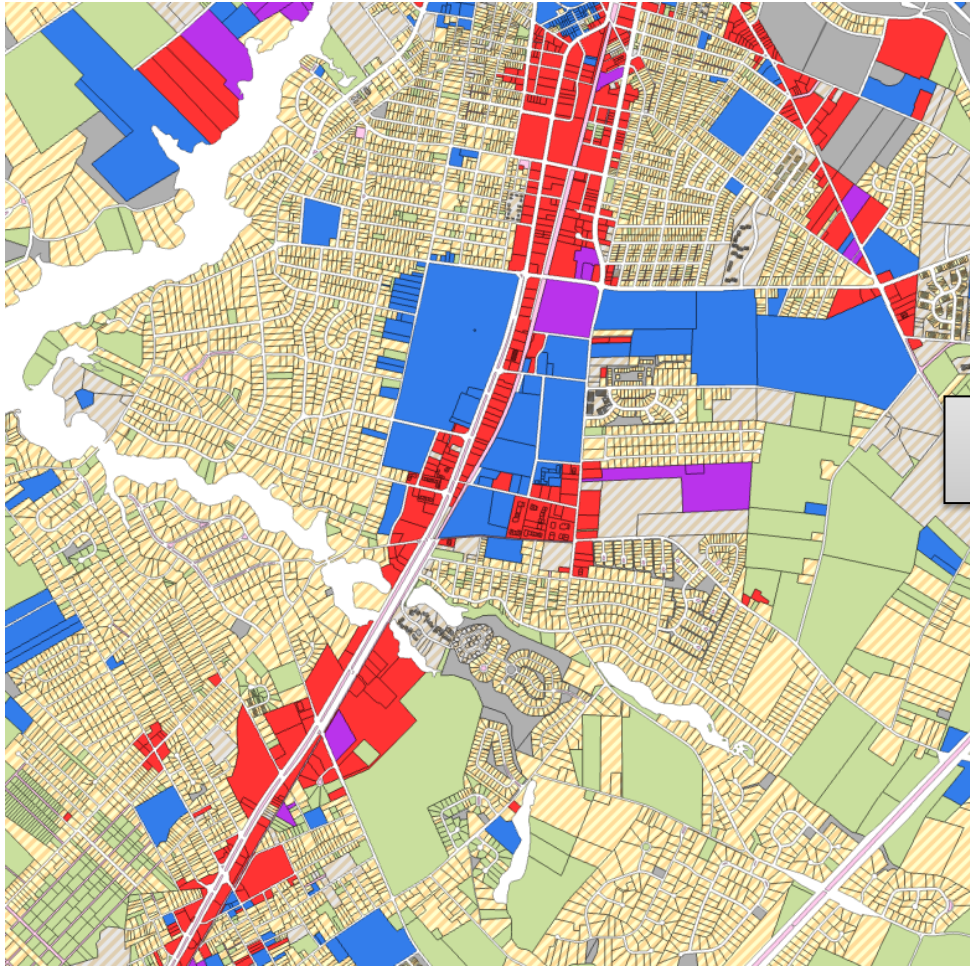
- Automate and standardize
- Reduce generalization
- Include entire roadway network within transportation classification

# STEP 1: CLASSIFY DEVELOPED PARCELS

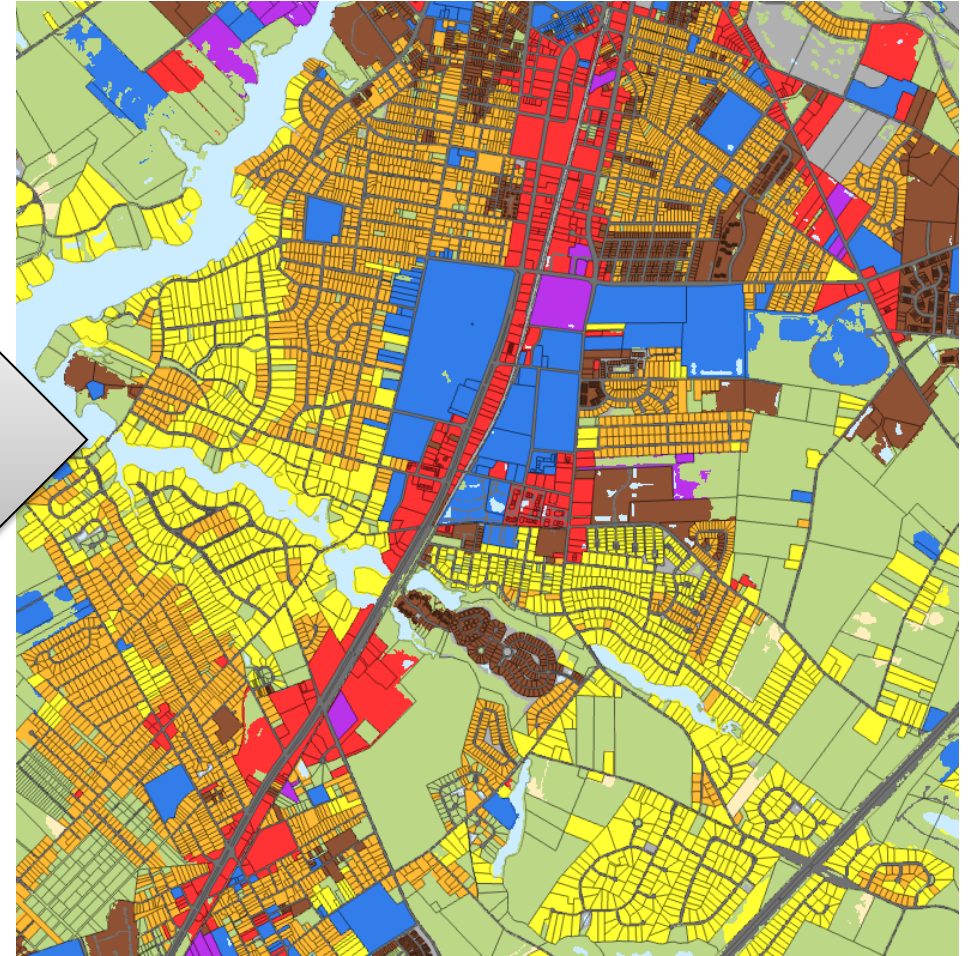
- Parcels with urban improvements associated with structures or impervious surfaces as of 2018
- Parks/open spaces
- Extractive areas



# STEP 2: GENERATE STATEWIDE LAND USE MAP



Step 1: Classified Parcels

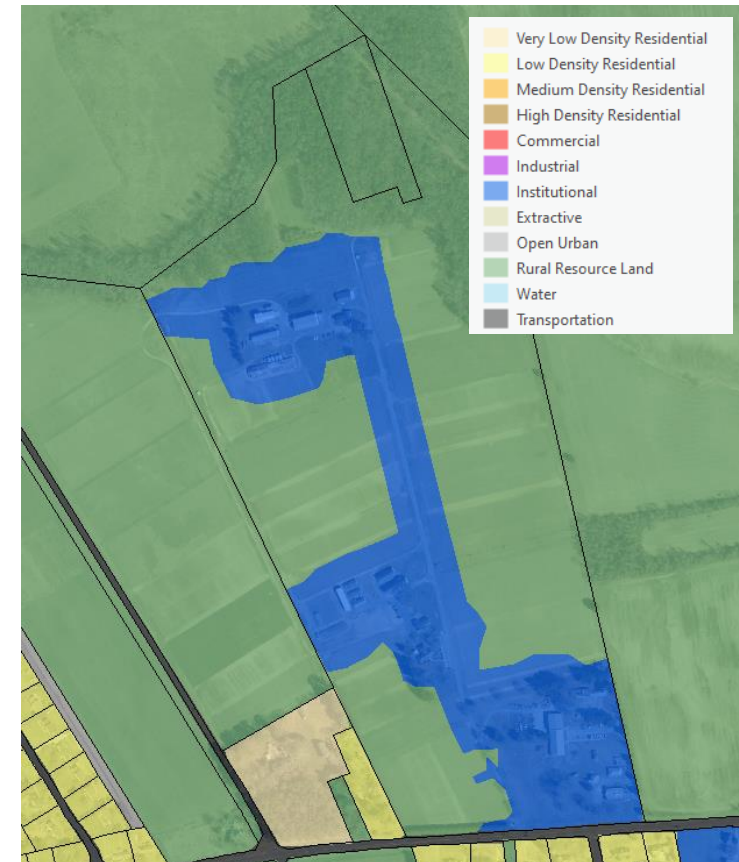
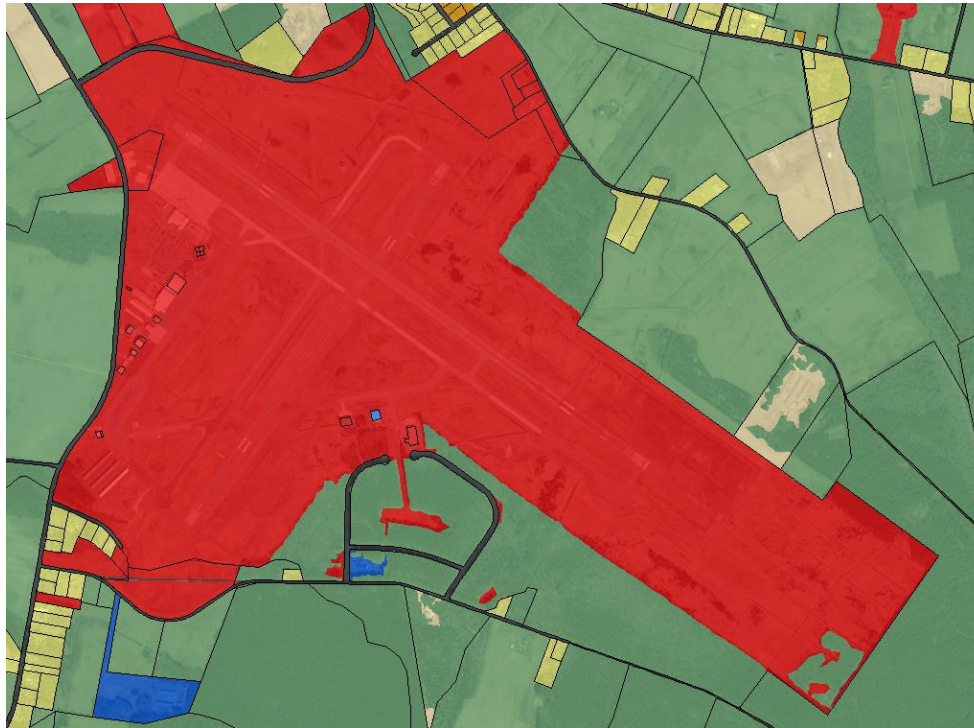


Step 2: Statewide Land Use Map

*Images show hypothetical example. Actual land uses may differ.*



# DETERMINE DEVELOPED EXTENT



*Images show hypothetical example. Actual land uses may differ.*

# NEXT STEPS & FUTURE CONSIDERATIONS

## Next Steps:

- Integrate feedback from local jurisdictions
- Release beta version for public use and feedback (not comparable to 2010 LULC)

## For Future Exploration:

- Data maintenance procedures
- Solar, extractive, and mixed use
- Change over time

# THANK YOU

Please feel free to reach out with feedback or questions!

Deborah Sward

[deborah.sward@maryland.gov](mailto:deborah.sward@maryland.gov)