

An aerial photograph showing a river meandering through a vast, dense green forest. In the upper-middle section, a golf course with several green fairways and sand traps is visible, partially surrounded by trees. The river flows from the top left, curves around the golf course, and continues towards the bottom right. The text "Updates for the HWGIT August Meeting" is overlaid in white, centered on the image.

Updates for the HWGIT August Meeting

SRS Cycle

Current goal to shift to November QPM

Reorganization of Cohorts

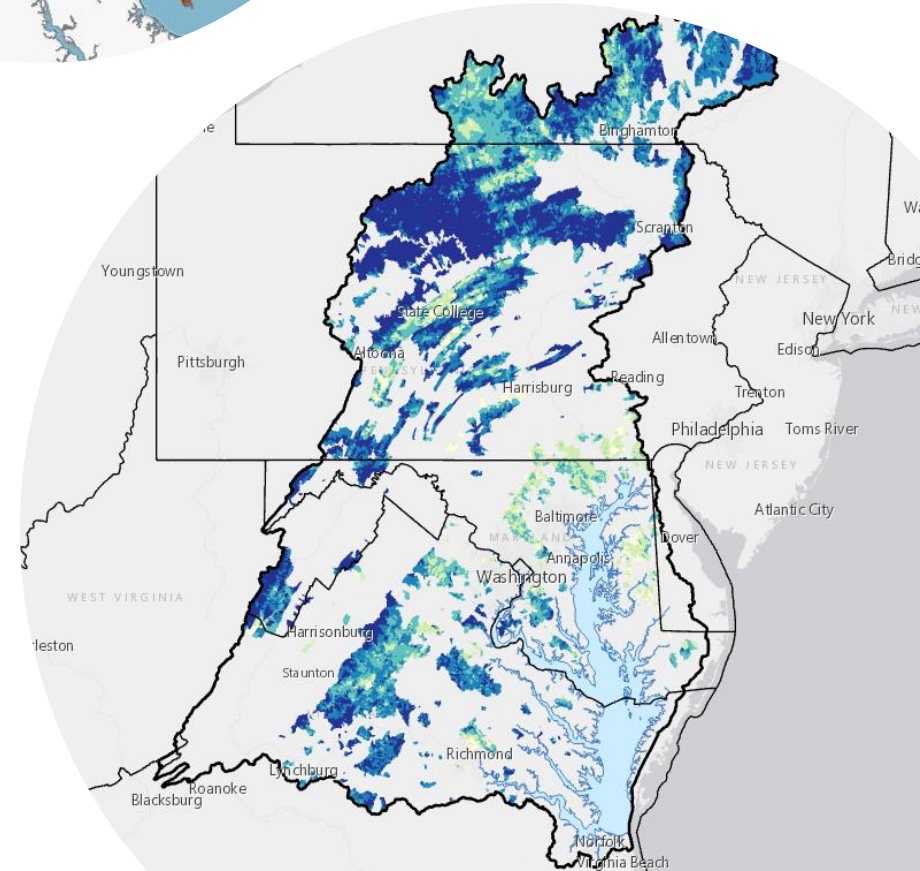
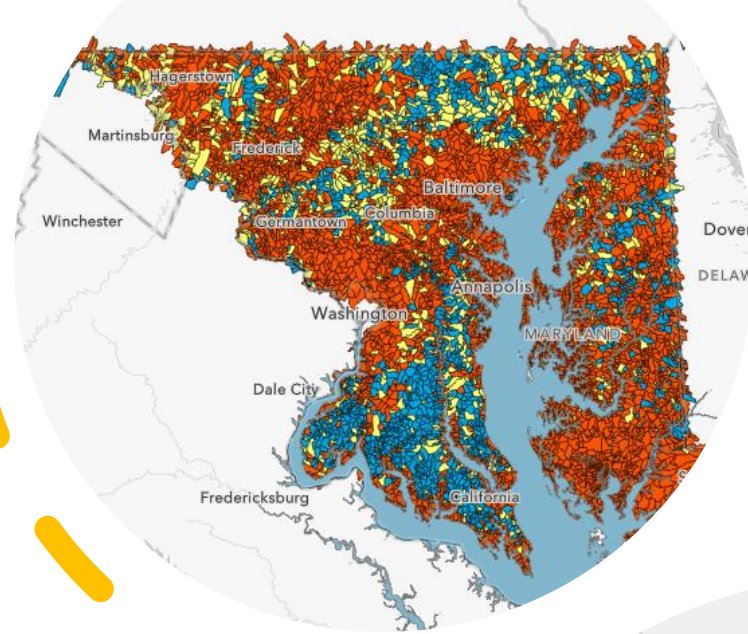
Getting more STAC
involvement/integration of Science Needs

Lightening of load on Coordinator/Staffers

Will share final schedule when finalized

Indicator Action Team

- Development of a Healthy Watersheds Indicator
- Action Team will be meeting 1 to two times a month
- First meeting on August 15th from 1-2
- Email Sophie (swatman@chesapeakebay.net)
If you are interested in joining!



2022 GIT Funding: Community Response to Land Use Change



Cross-disciplinary social science research and engagement with stakeholders.



To identify communities across the Watershed that have experienced, and will likely continue to experience, land use changes threatening valuable habitats.



Looking for Steering Committee members! If interested please email Sophie (swaterman@chesapeakebay.net).

A large orange circle is positioned on the left side of the slide, partially cut off by the edge.

Request for Jurisdiction Meetings

- Meet the new Coordinator and the rest of the HWGIT team
- Check-in- What's working? What's not?
- What Direction the GIT should move towards?
- Other feedback

