

# Chesapeake Bay Land Use/Land Cover (LULC) Trends

**Sarah M. McDonald**

**USGS, Lower Mississippi Gulf Water Science Center**

Healthy Watersheds GIT Meeting

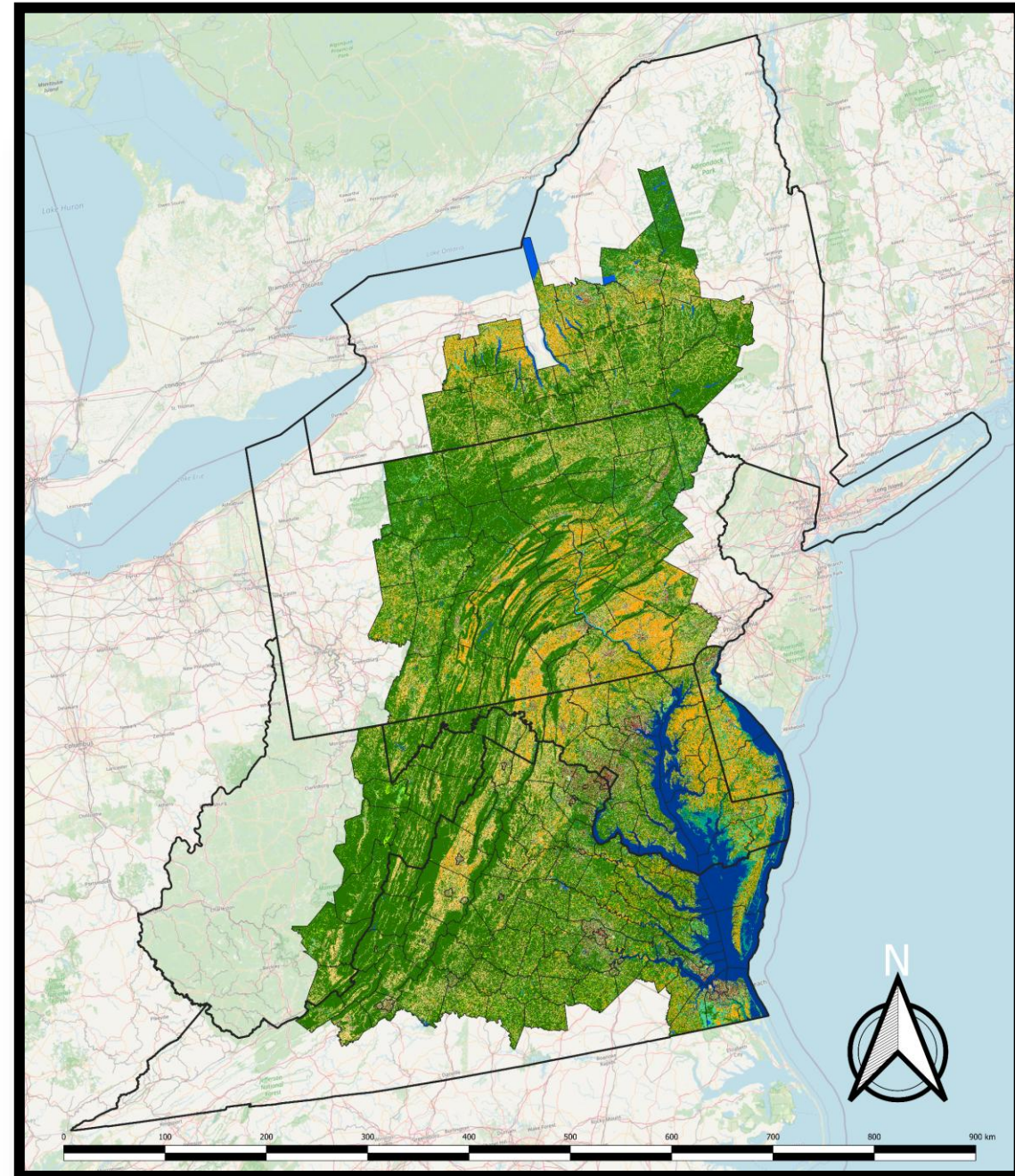
June 9, 2025

U.S. Department of the Interior  
U.S. Geological Survey



# Release Status

- All data can be viewed on the Chesapeake Conservancy's Web Viewer: <https://lulc-viewer.cicapps.org/>
- County and state-scale data will be downloadable from ScienceBase (in progress)
- The county download links are also available in the web-viewer (currently not active links)
- Webinar planned for June 25<sup>th</sup>, 12:00-1:30pm EST



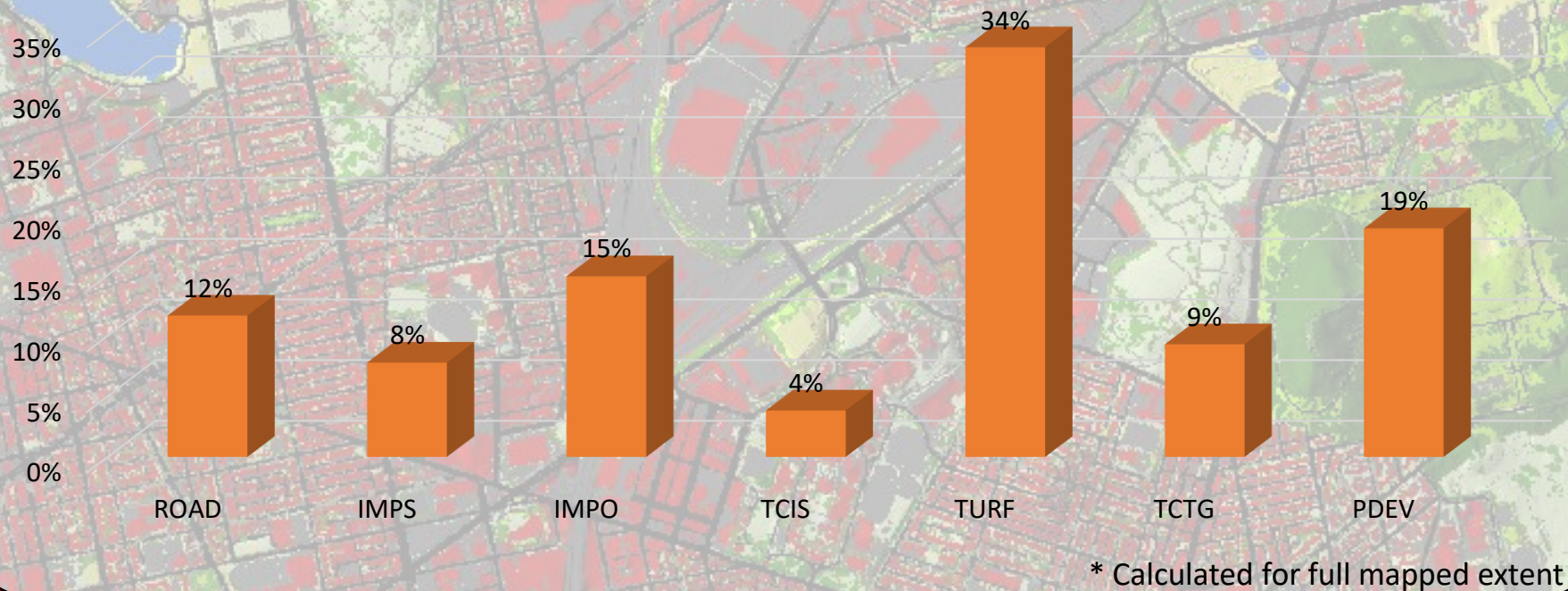
# Quick Demo

<https://lulc-viewer.cicapps.org/>



## Developed Lands

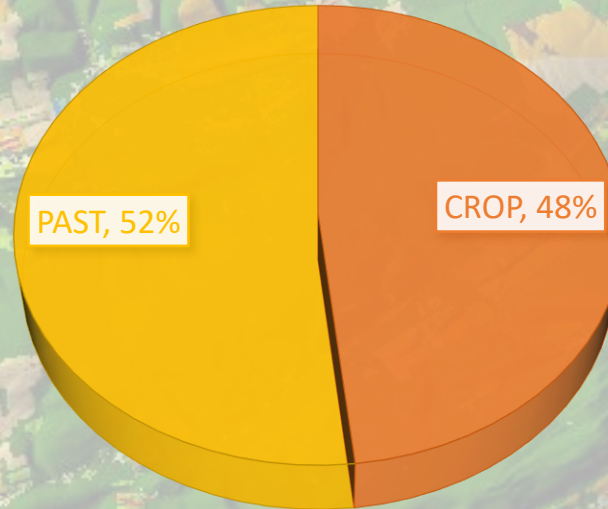
7,189,466 acres in the (12% of land area)





## Agricultural Lands

11,154,655 acres in the (19% of land area)

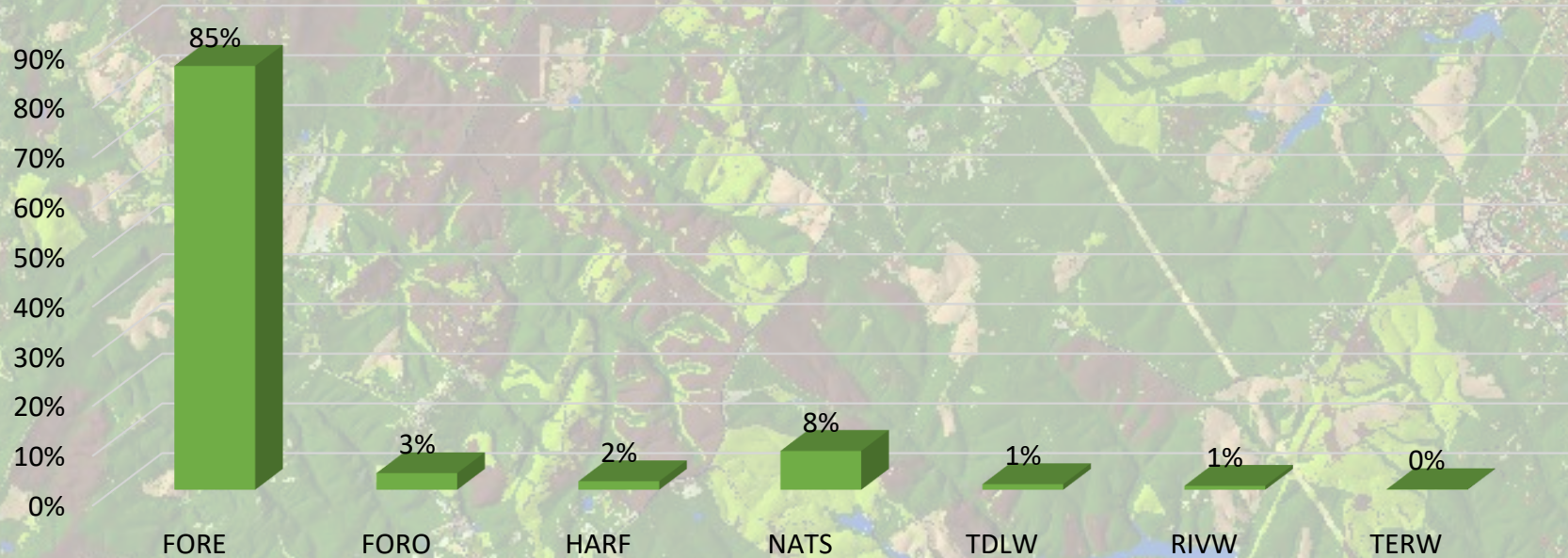


\* Calculated for full mapped extent



## Natural Lands

40,534,122 acres in the (69% of land area)



\* Calculated for full mapped extent



## Land Use / Land Cover Change from 2013/14 to 2021/22

### Highlights

Rotational timber harvest:

- 570,000 acres forest
- + 502,000 acres early successional forest

Impervious surfaces

- + 105,000 acres

Turf Grass

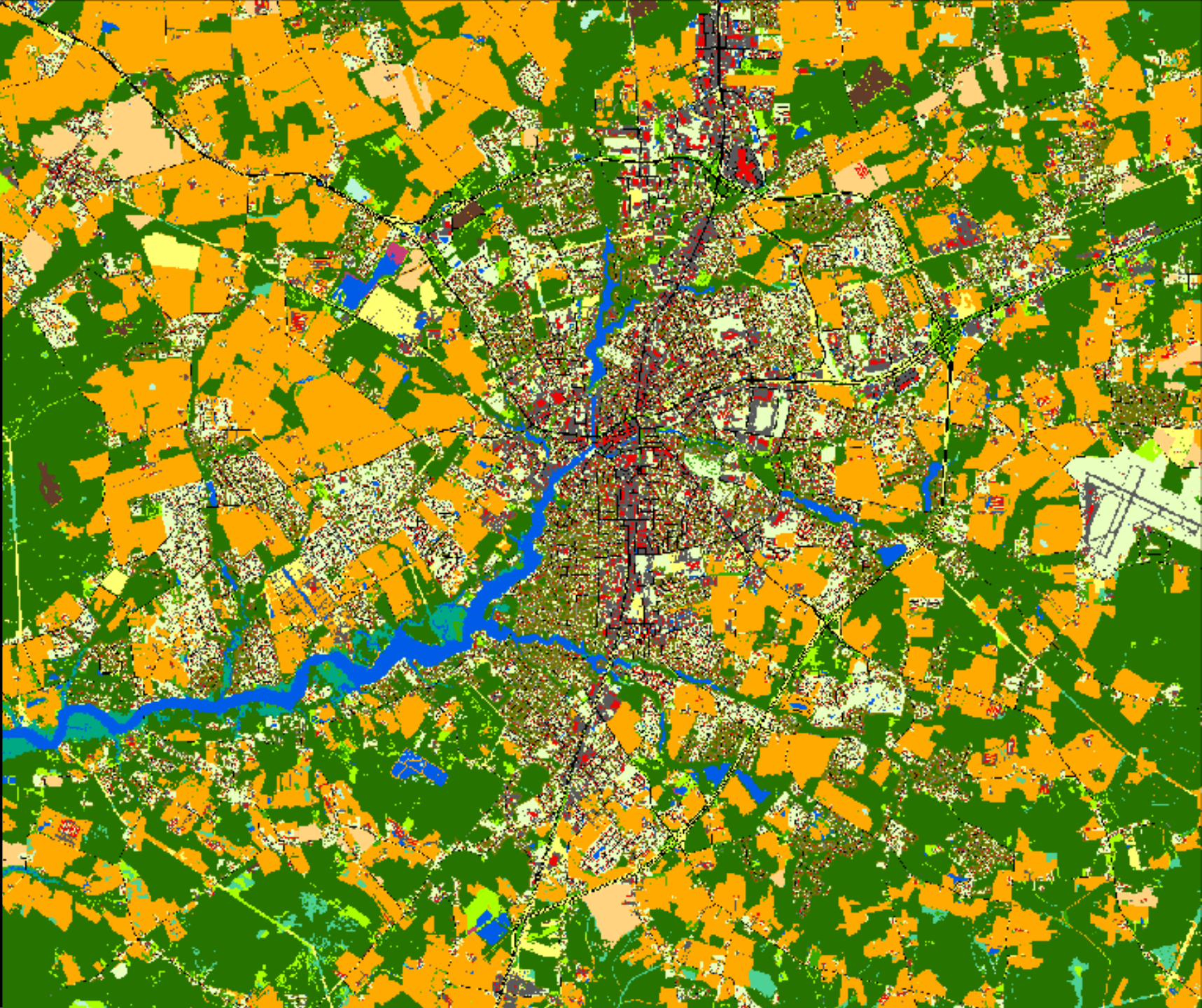
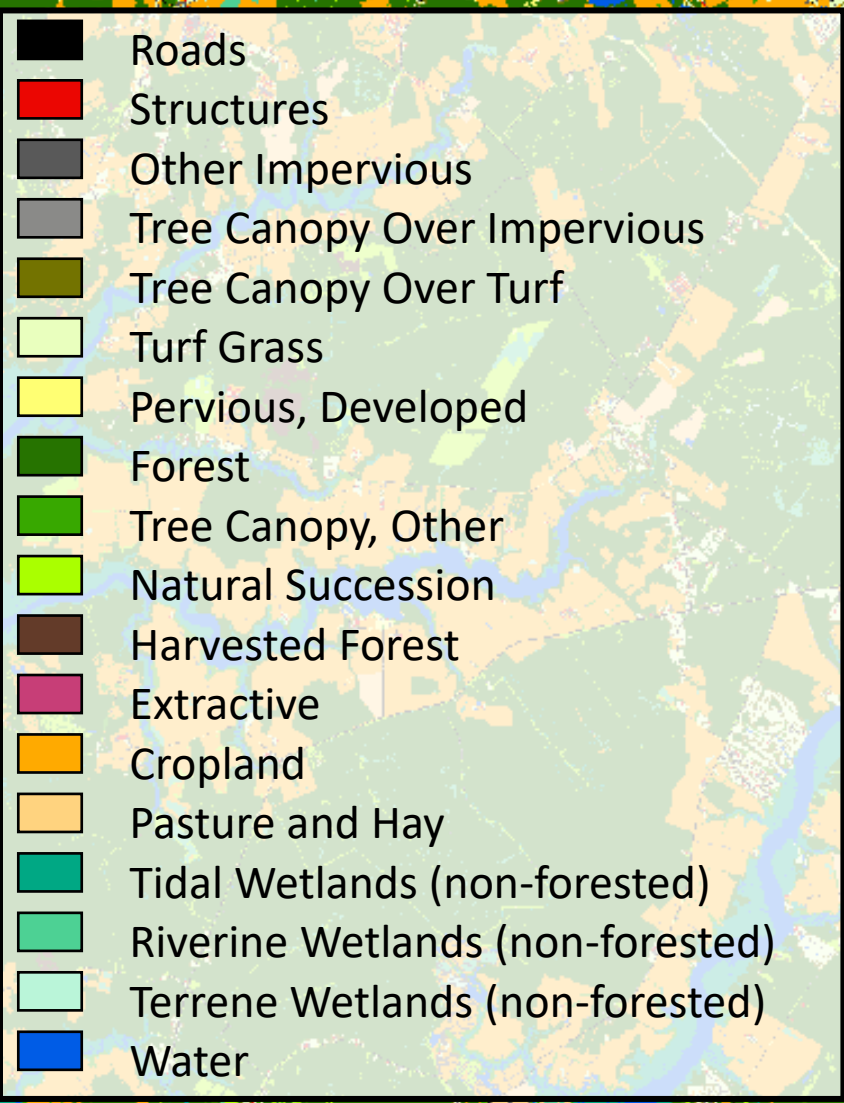
- + 51,000 acres

Forest and farmland conversion to development

5:1 ratio of forest to farmland

- 100,000 acres of early and late-successional forest
- 21,000 acres of cropland and pasture/hay

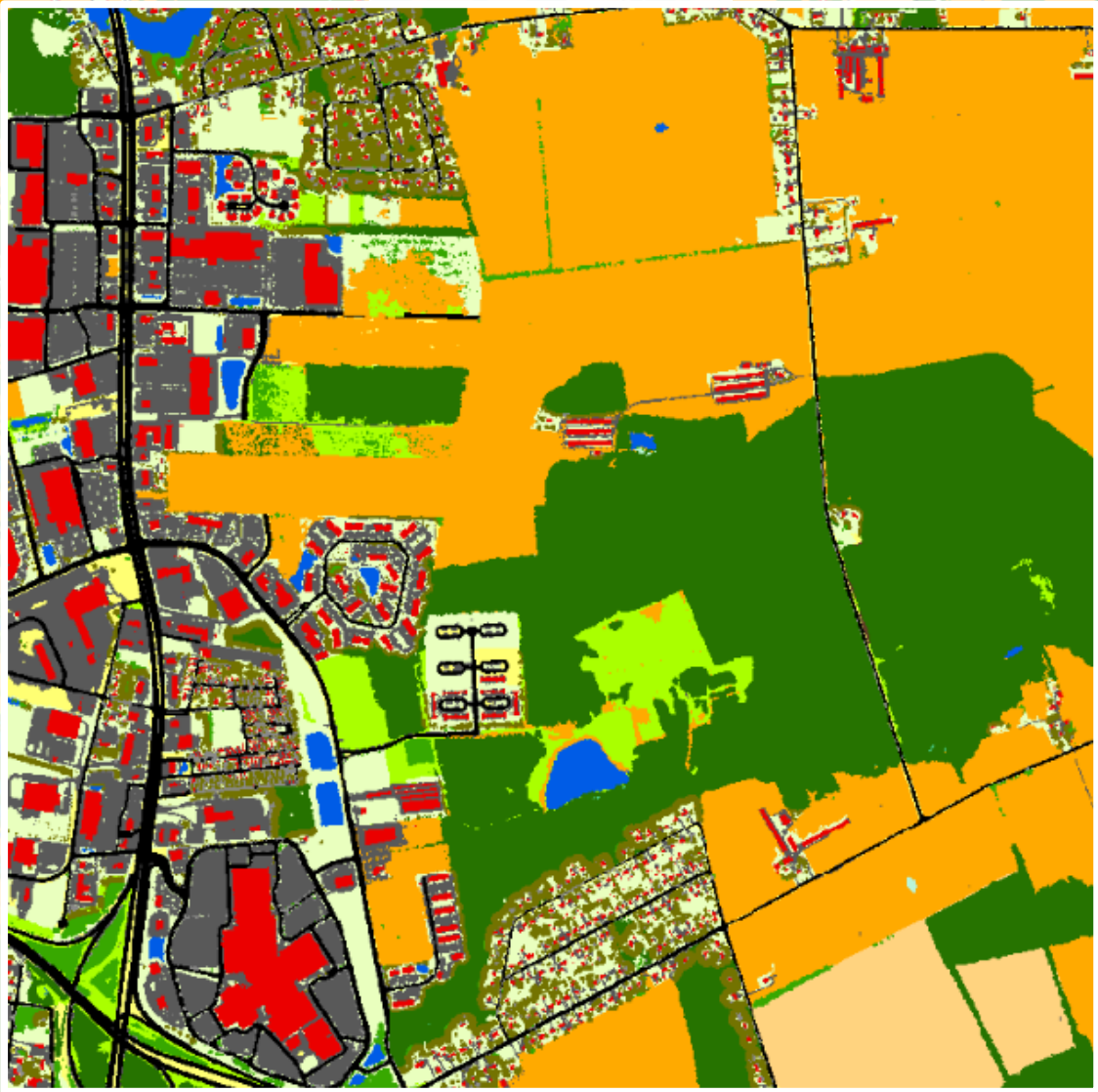
Wicomico County, Maryland  
2018 Land Use





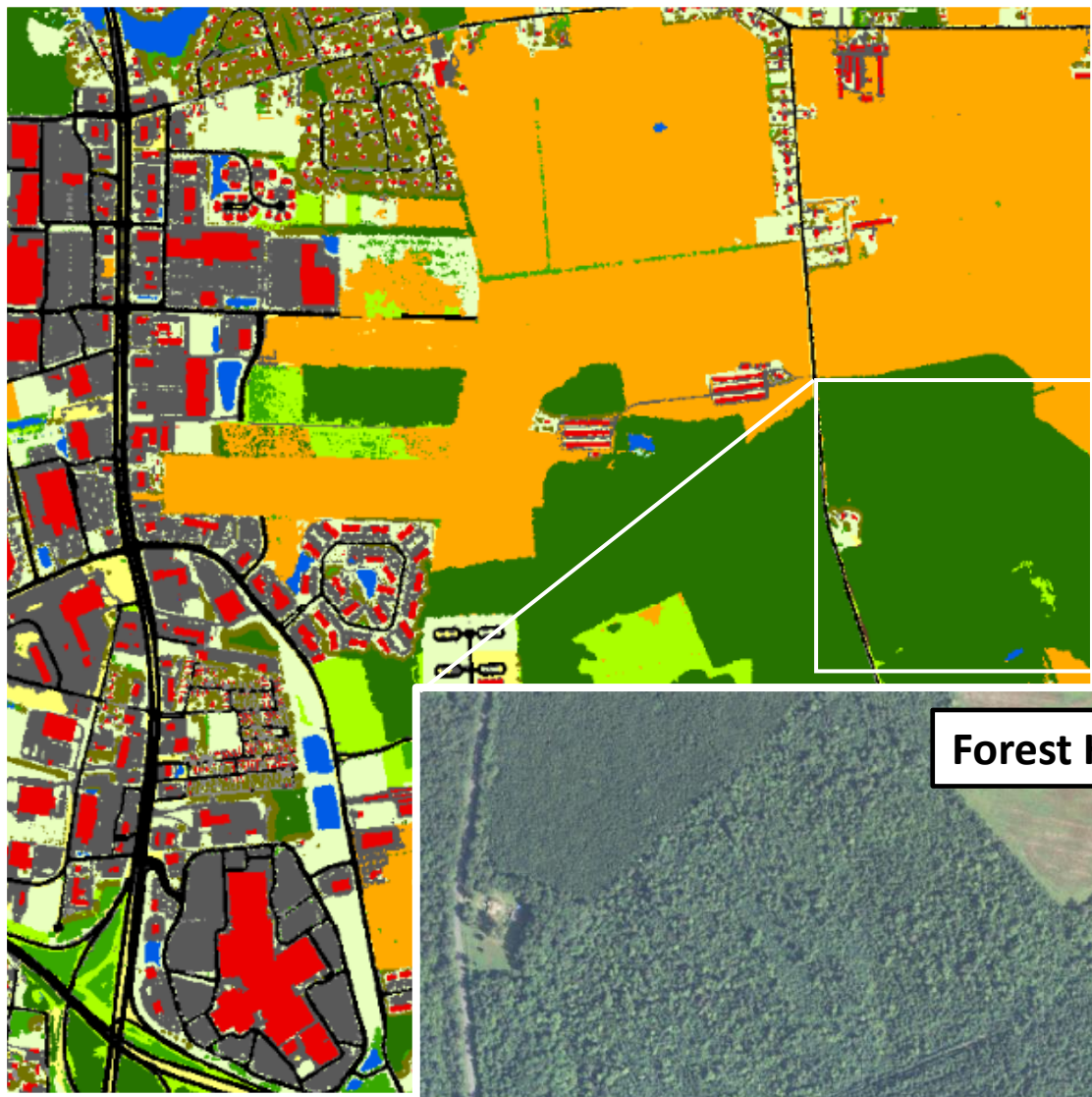
2013 Land Use

2018 Land Use

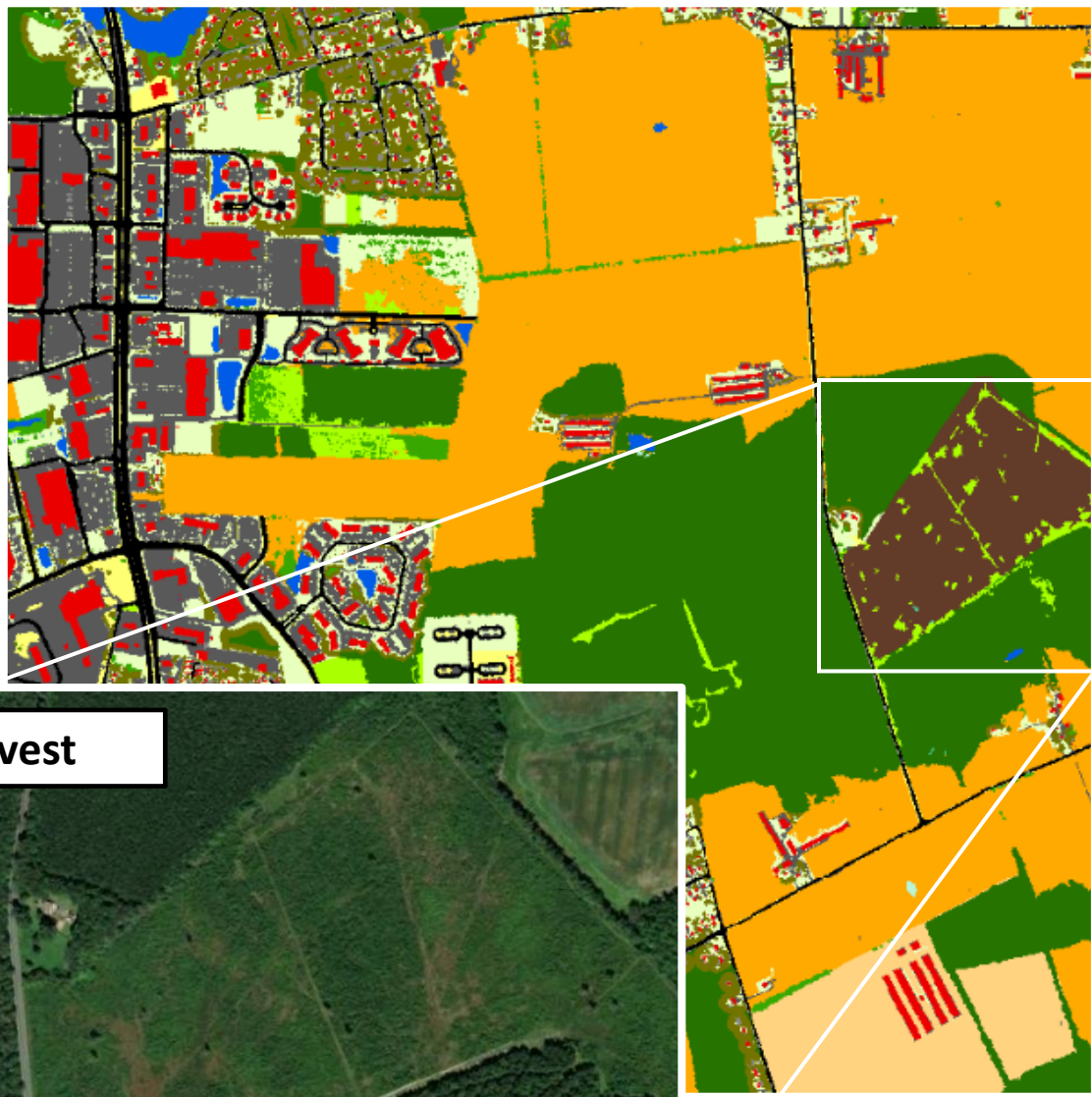




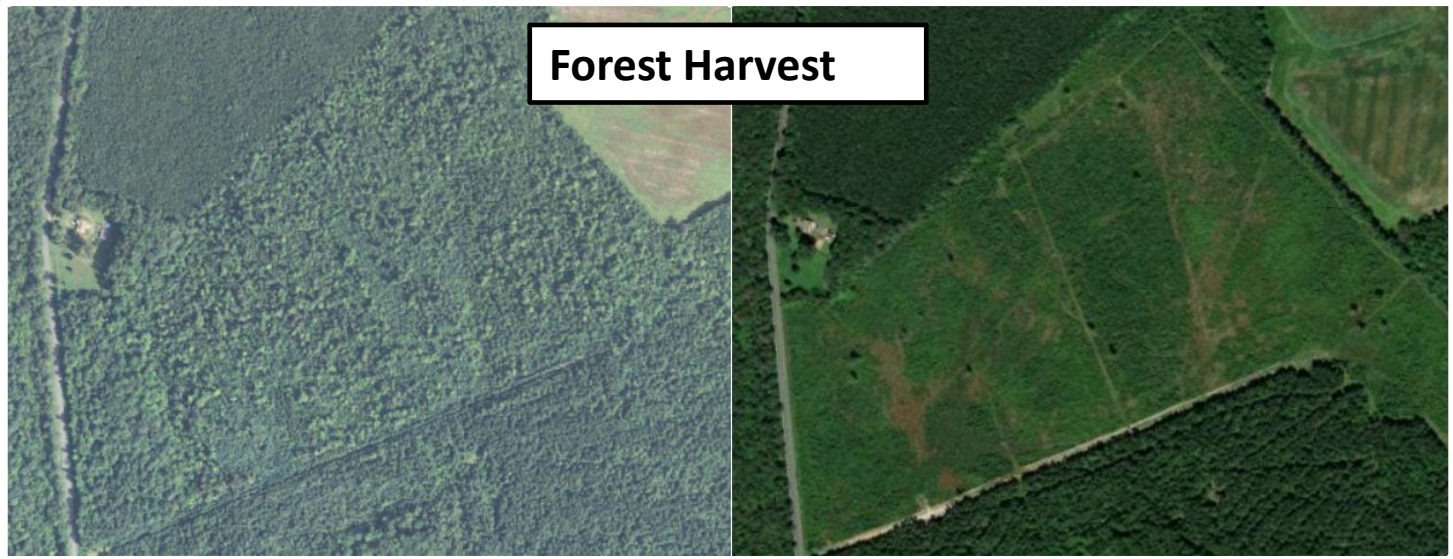
2013 Land Use



2018 Land Use



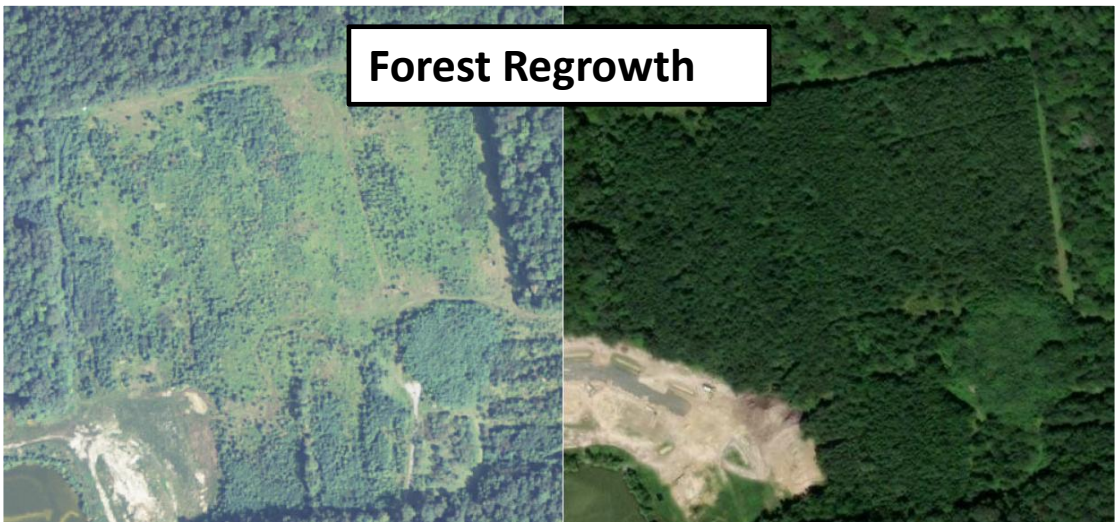
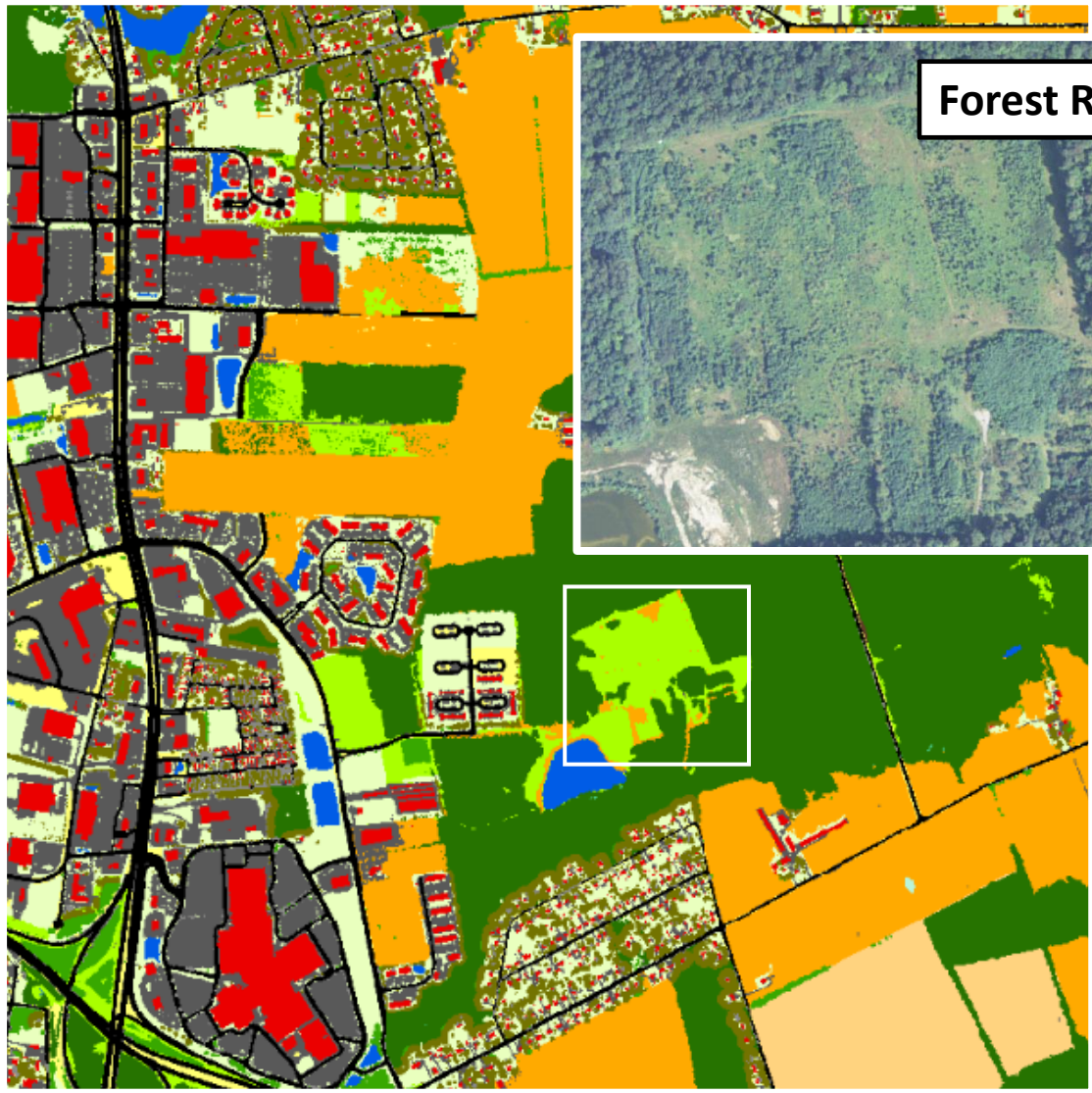
Forest Harvest





2013 Land Use

2018 Land Use





2013 Land Use

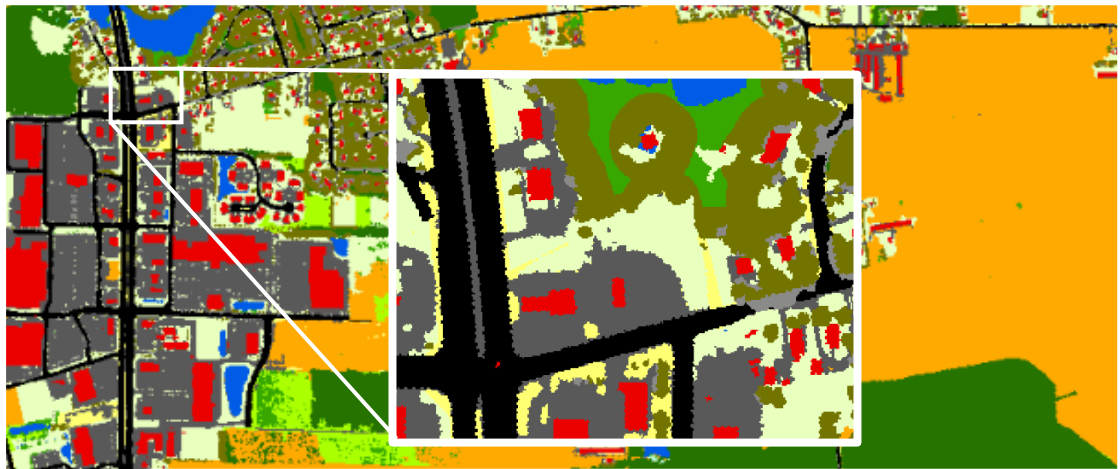
2018 Land Use

Urban Tree Cover Change

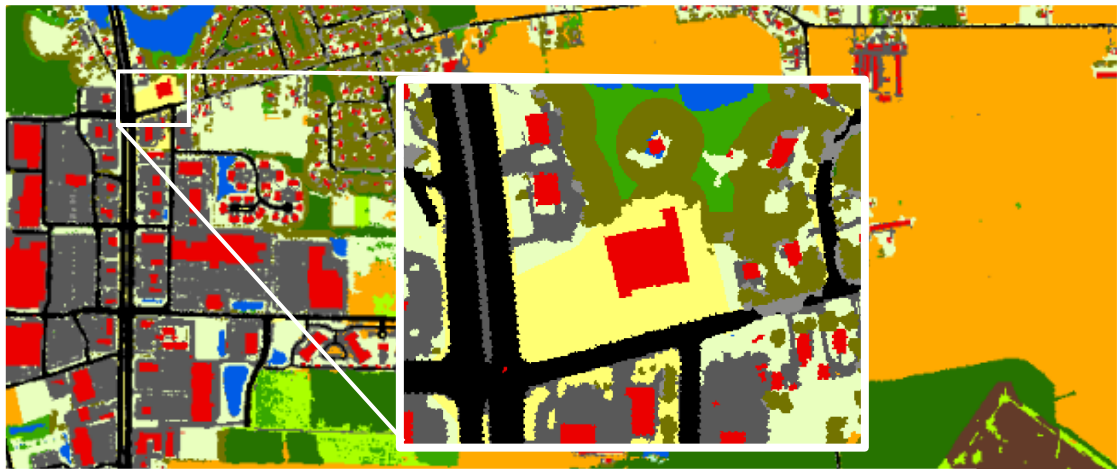




2013 Land Use



2018 Land Use

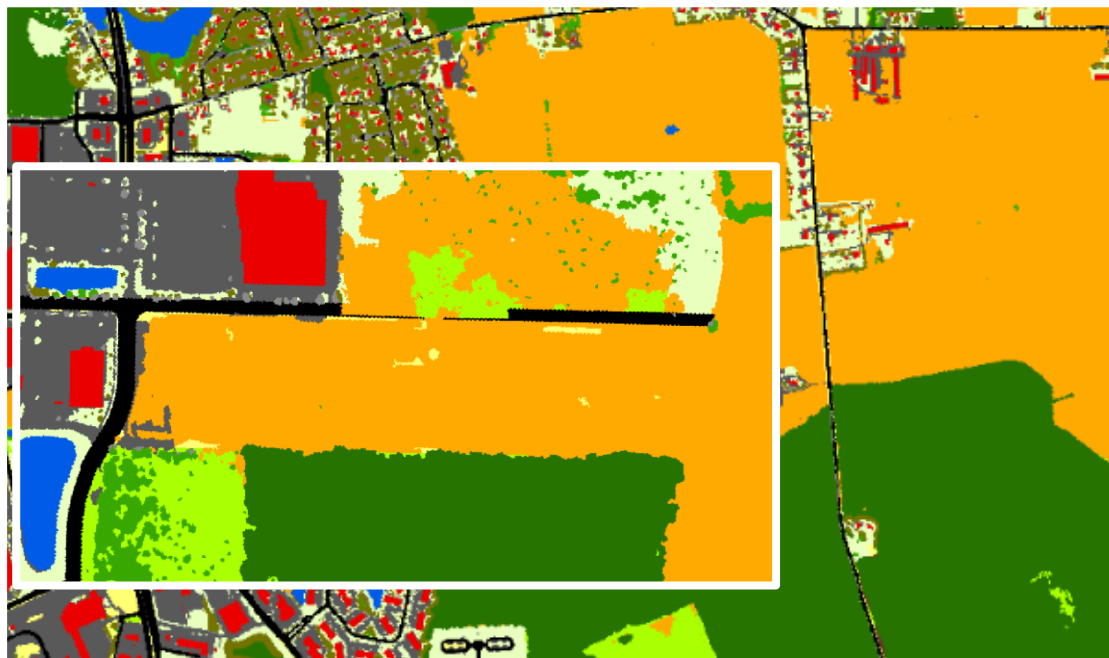


Redevelopment





2013 Land Use



2018 Land Use



Agriculture Conversion to Development





2013 Land Use

2018 Land Use



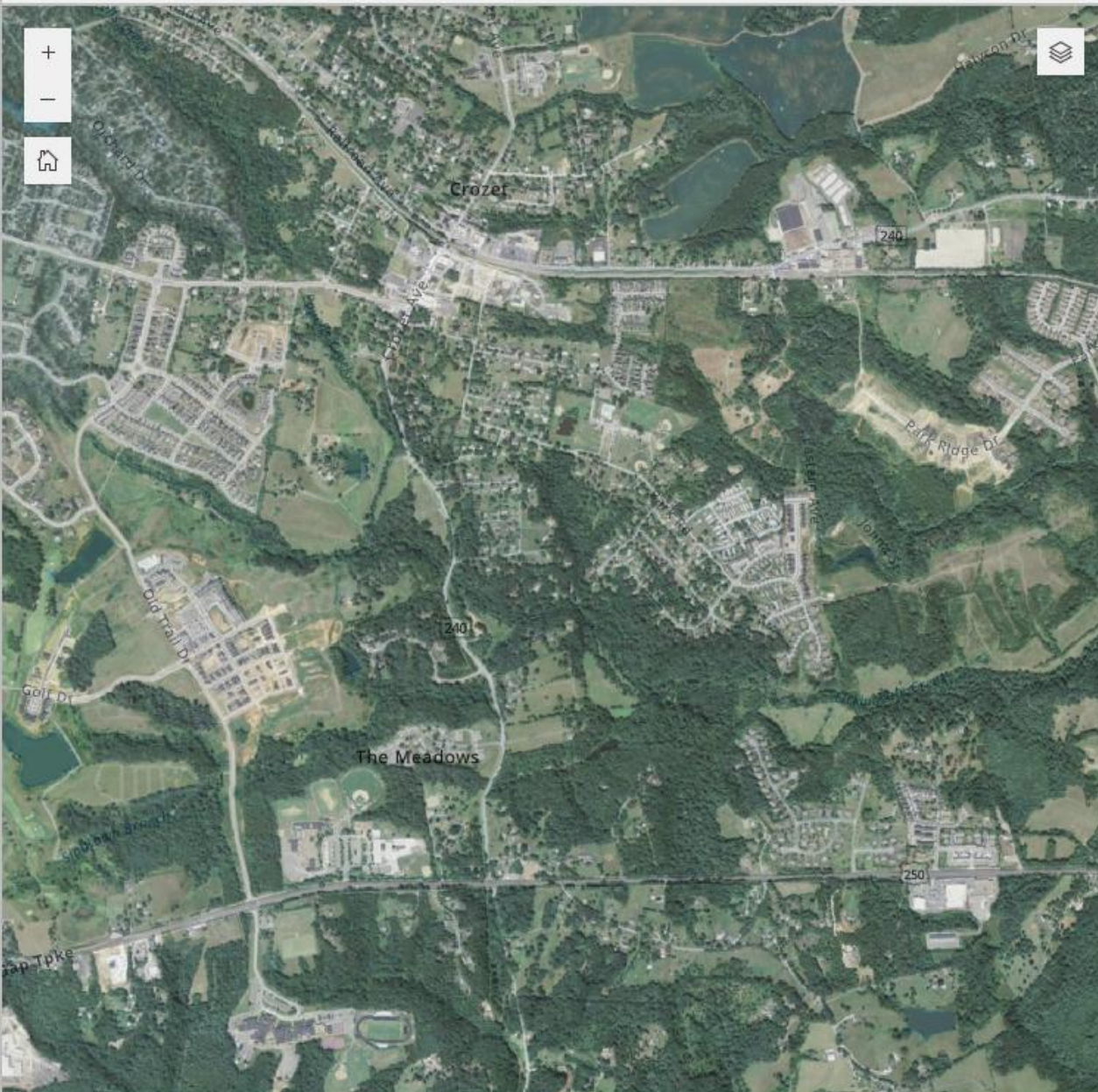


We Have the Data ... Now What?

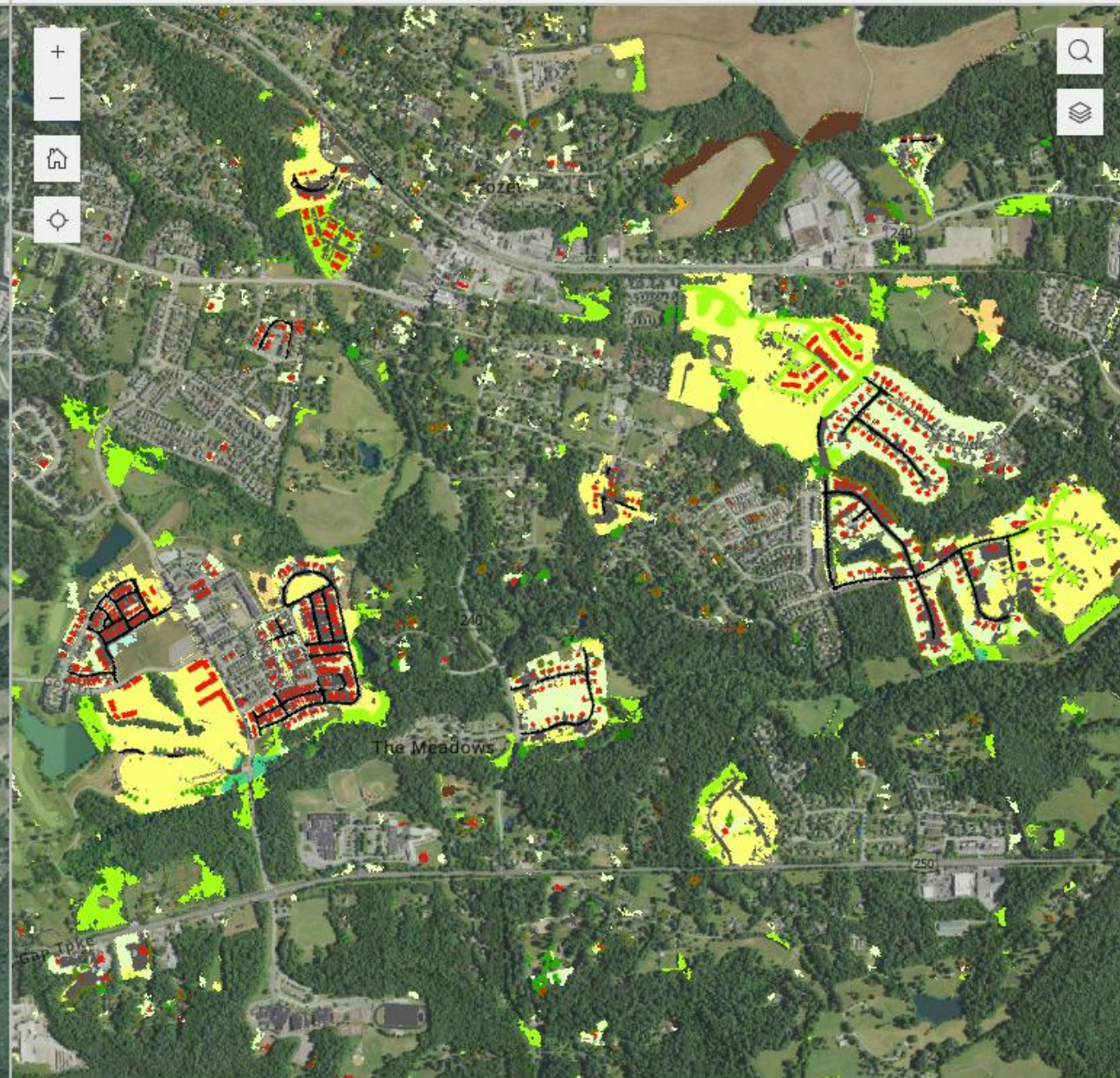


# High Impervious Surface Growth/Acre: Crozet, Virginia

2013/14 NAIP Aerial Imagery



2013/2014 to 2021/2022 Change



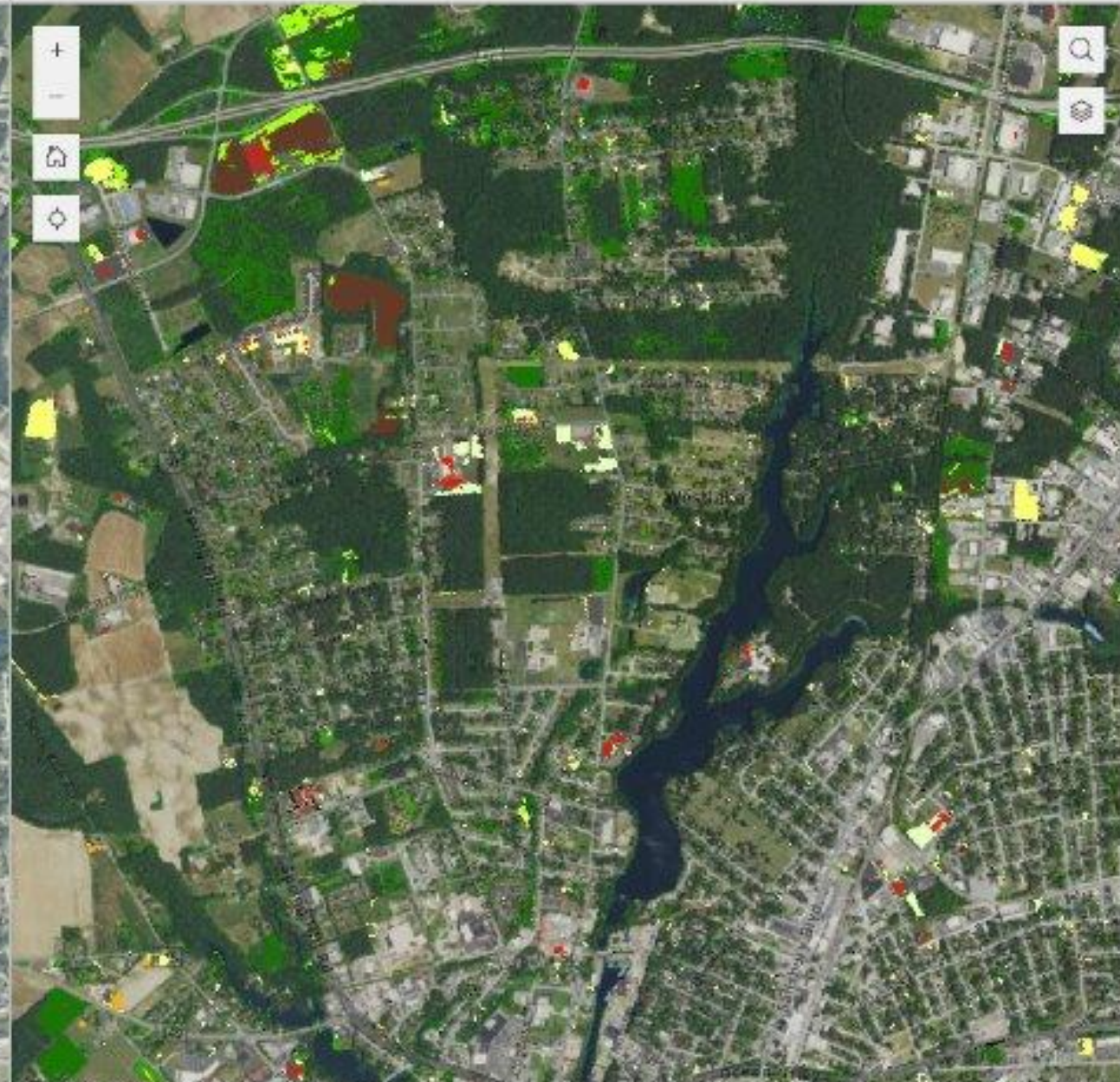


# High Urban Tree Canopy Growth/Acre: Salisbury, Maryland

2013/14 NAIP Aerial Imagery



2013/2014 to 2021/2022 Change





# Questions?

Sarah McDonald

[smcdonald@chESApeakebay.net](mailto:smcdonald@chESApeakebay.net)