

Land Use Change in Healthy Watersheds

Peter Claggett¹ and Sarah McDonald¹

¹ Lower Mississippi-Gulf Water Science Center, U.S. Geological Survey

**Healthy Watersheds Goal Implementation Team Meeting
October 16, 2023**

Land Use/Land Cover Change Statistics 2013/14 – 2017/18

206 County Region

State	Dev_chng	Nat_chng	Ag_chng	Oth_chng
Delaware	11,312	(6,373)	(3,339)	(1,600)
District of Columbia	108	(100)	(16)	8
Maryland	32,623	(15,840)	(18,860)	2,076
New York	8,732	(5,661)	(4,781)	1,710
Pennsylvania	41,033	(34,534)	(18,375)	11,877
Virginia	51,911	(76,818)	6,511	18,398
West Virginia	6,954	(12,978)	4,207	1,817
Total	152,674	(152,304)	(34,653)	34,286

State-Designated Healthy Watersheds (SDHW)

State	Dev_chng	Nat_chng	Ag_chng	Oth_chng
Delaware	54	(77)	25	(2)
District of Columbia	-	-	-	-
Maryland	6,462	(3,857)	(3,458)	852
New York	1,163	275	(1,692)	254
Pennsylvania	8,467	(6,682)	(3,928)	2,143
Virginia	5,601	(9,598)	1,011	2,985
West Virginia	(0)	0	(0)	0
Total	21,747	(19,938)	(8,041)	6,232

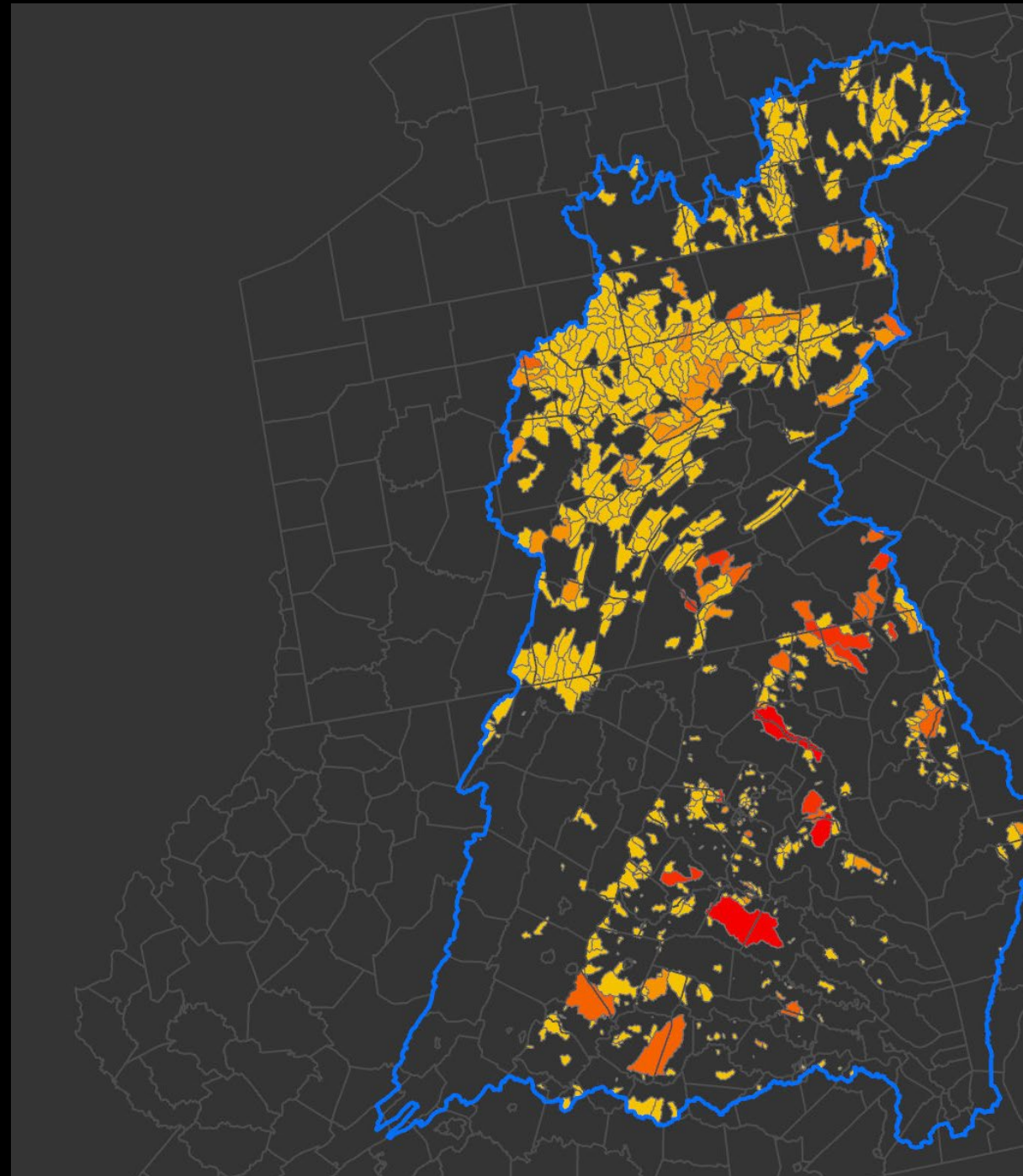
Take-home messages:

- In proportion to area, 0.24% of the region was developed compared to 0.20% of SDHWs
- The Nat:Ag conversion ratios were 4.4 in the region and 2.5 in SDHWs
- Nat:Ag conversion ratios were highest in Virginia and lowest in New York

Land Use/Land Cover Change Statistics 2013/14 – 2017/18

Take-home message:

- Healthy watersheds along the I-95 corridor tend to have higher amounts of development.



Land Protection Statistics 2022

206 County Region

State	Protected Area
Delaware	20%
District of Columbia	20%
Maryland	19%
New York	14%
Pennsylvania	22%
Virginia	18%
West Virginia	24%
Total	19%

State-Designated Healthy Watersheds (SDHW)

State	Protected Area
Delaware	29%
District of Columbia	0%
Maryland	26%
New York	8%
Pennsylvania	38%
Virginia	19%
West Virginia	92%
Total	29%

Take-home message:

- A greater percentage of lands within SDHWs are protected compared to all other lands.

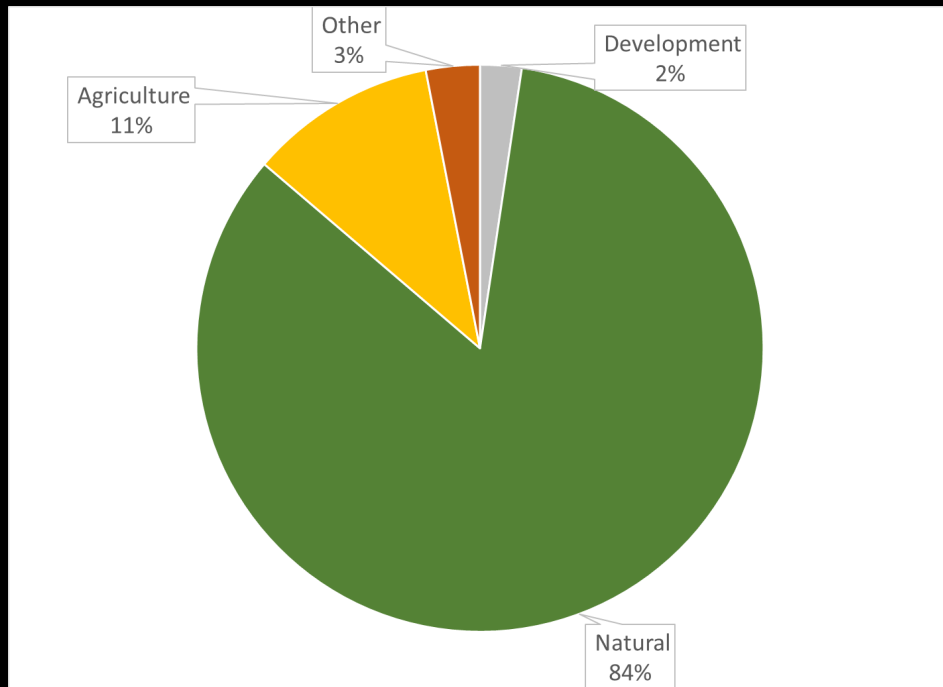
According to the states...

Jurisdiction	Definition of “Healthy”	Categories
D.C. *	No identified healthy watersheds.	
Delaware*	Total Maximum Daily Loads (TMDLs) are achieved, and their surface water quality standards are met (toxins, nutrients, DO, temperature, etc.).	Water quality
Maryland	Tier II waters. Biological characteristics are significantly better than minimum water quality standards.	Biology
New York	Absence of use restrictions (nutrients, DO, etc.).	Water Quality
Pennsylvania	High Quality or Exceptional Value waters. Biological (wilderness trout stream and benthics), chemical (DO, pH, toxics), and habitat assessments (located in designated state or national protected, owned, or managed areas).	Biology, Water Quality, Habitat, Land Protection
Virginia	High aquatic integrity and ecologically healthy waters. Fish and macroinvertebrate communities, instream and riparian habitat. High numbers of native/broad diversity of species, few or no non-native aquatic species, few generalist species.	Biology, Habitat.
West Virginia	Tier 3 waters. Exceptionally high benthic macroinvertebrate communities, located in Federal Wilderness areas, state and national parks, national forests, and protected by the Wild and Scenic Rivers Act, naturally reproducing trout streams.	Biology, Habitat, Land Protection

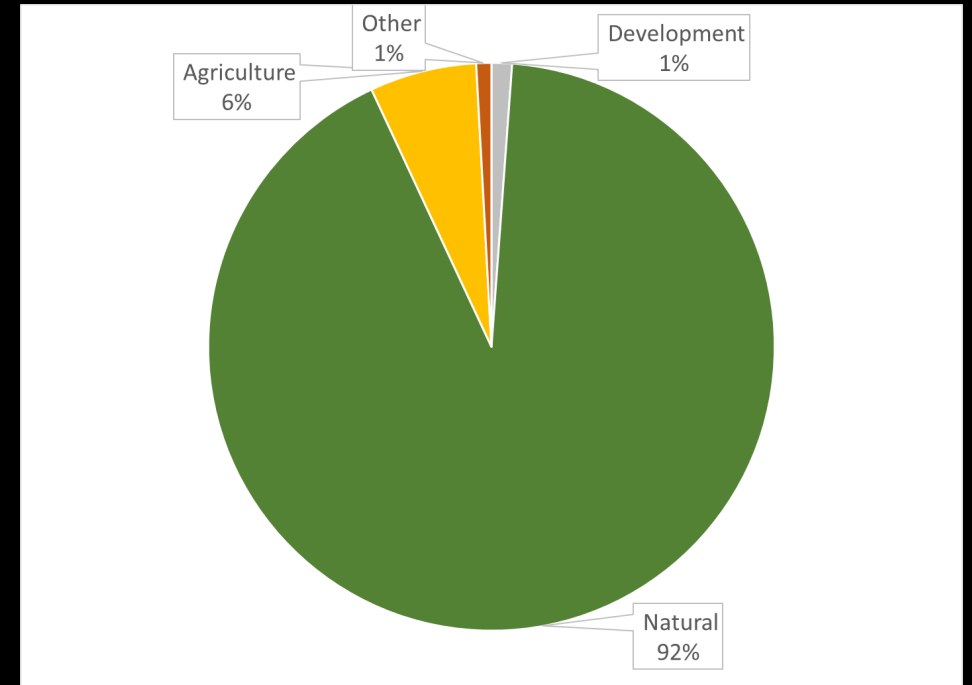
* Currently no healthy watersheds.

Land Protection Statistics 2022

206 County Region



State-Designated Healthy Watersheds (SDHW)



Take-home message:

- Protected lands within healthy watersheds are composed of a higher percentage of natural lands compared to protected lands in the region



science for a changing world