



TU's Coldwater Land Conservancy Fund
@ work in the Chesapeake Bay watershed

Healthy Watersheds GIT
September 11, 2013



TU in the Chesapeake Bay Watershed

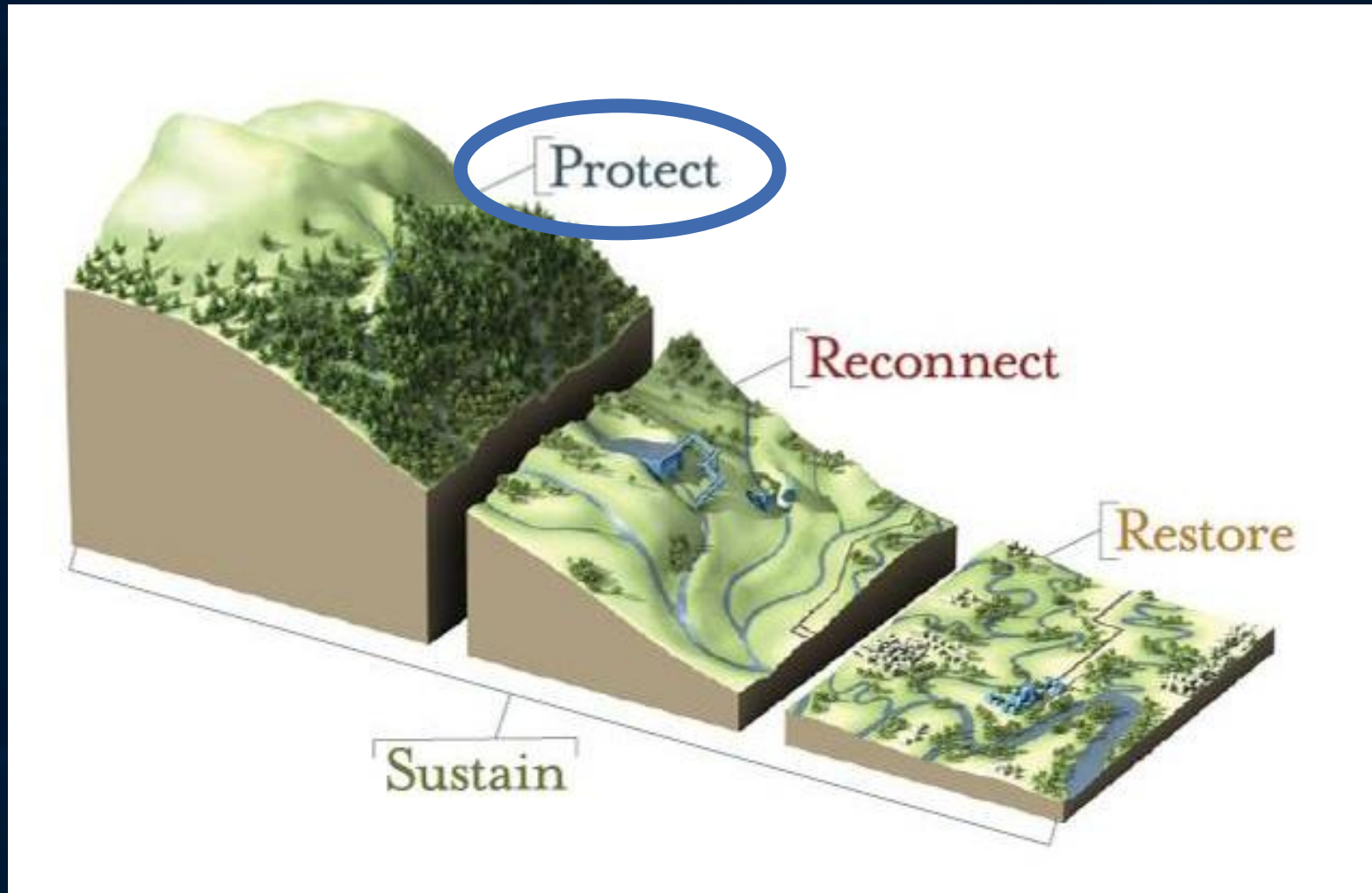
Grassroots and staff support for headwaters conservation

- 73 chapters, 5 councils
- 16,000+ members
- 20 full time staff
- 5 programs, focal watersheds
- Focused on native brook trout conservation, and wild trout



TU's Strategy

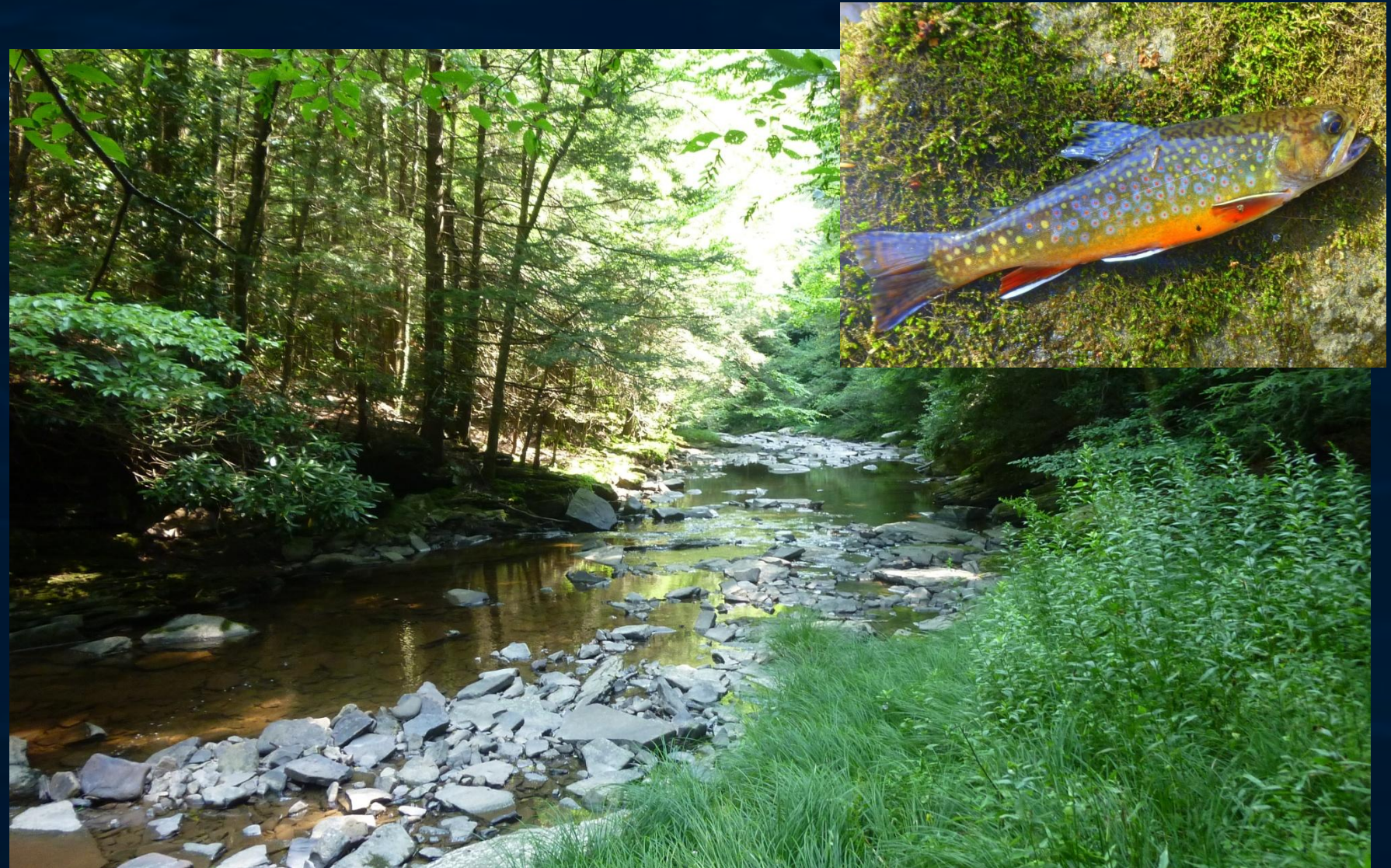
Protect – Restore – Reconnect – Sustain



The Coldwater Land Conservancy Fund

Protecting private land—and cold, clean water—from development

- Grants for conservation easements and lands
- For land trusts & agencies
- Covers transaction costs
- Includes tech. assistance
- TU not a land trust



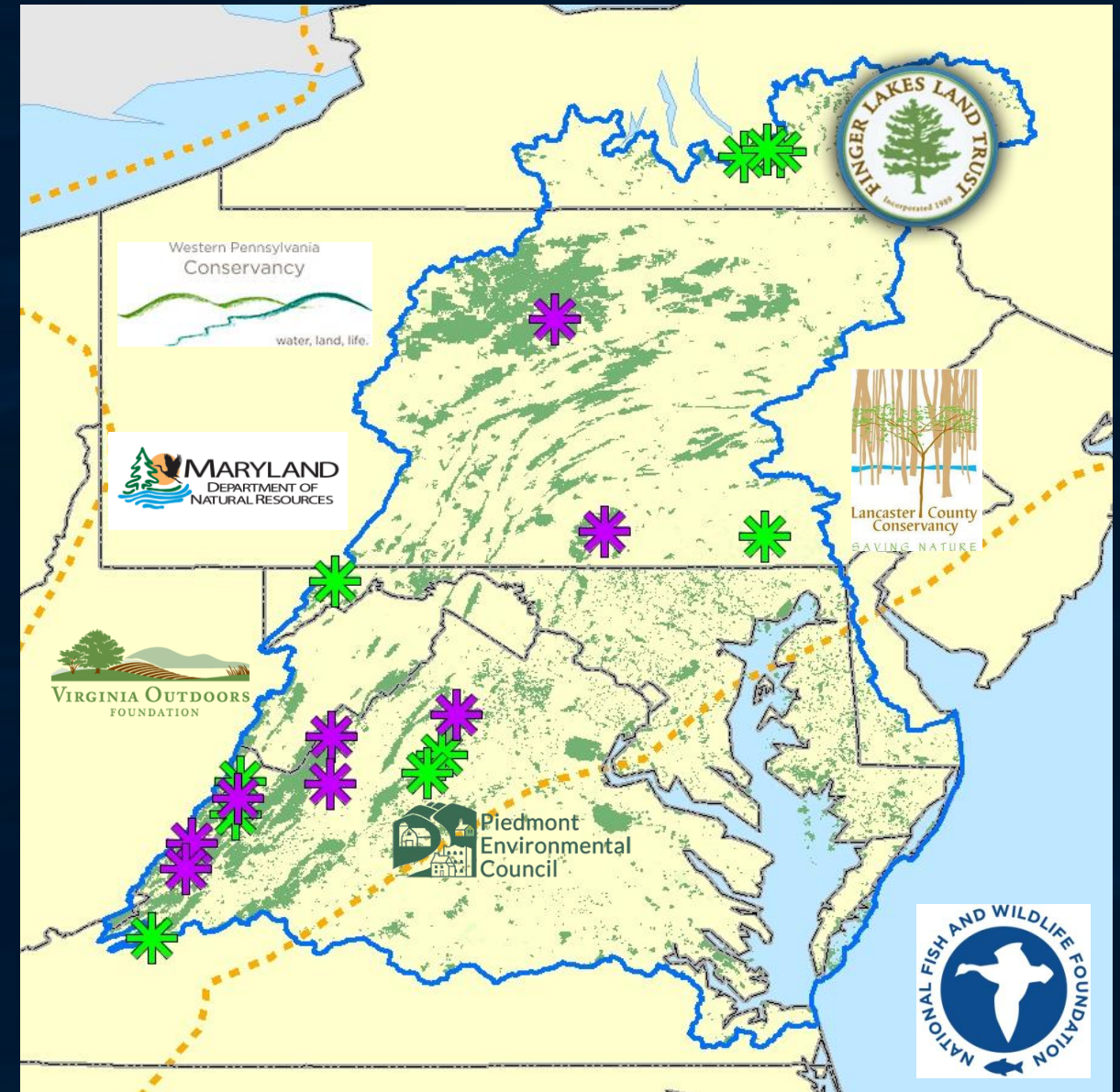
Savage River, MD



The Coldwater Land Conservancy Fund

Chesapeake Bay watershed projects

- Chesapeake watershed pilot made possible by NFWF
- For brook trout habitat protection
- 10 grants in 2012 protect 1,500 acres, 6 miles of brookie streams
- \$2M leveraged
- 5 more grants anticipated in 2013
- Grants range \$2K to \$12K



Examples of CLCF Projects

Paisley Conservation Easement



- E. Branch Owego Creek
- Best for Protection
- Public Fishing Rights
- Funding critical
- Restoration opportunity



Examples of CLCF Projects

Camp Snyder Acquisition

- Climbers Run
- Best for Enhancement
- Fee simple acquisition
- TU-land trust-agency partnership



Examples of CLCF Projects

Ballard Conservation Easement



- Conway River
- Best for Protection
- Adjacent to SNP
- Responded to TU/PEC outreach
- Enhanced riparian buffer restrictions

The Coldwater Land Conservancy Fund

What makes for a good CLCF project?



Jackson River, VA

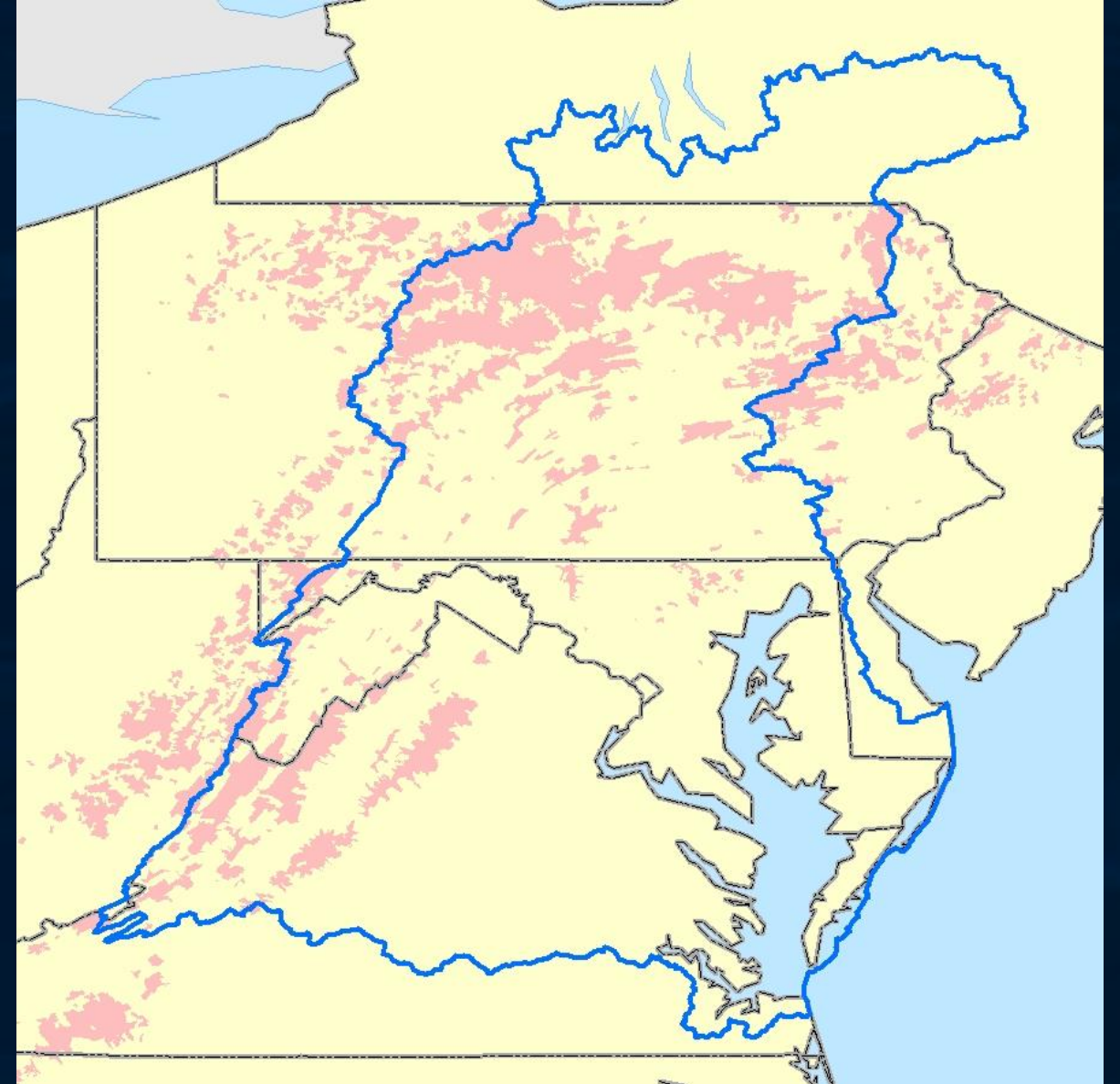
- Financial need
- Leverage
- Partnerships
- Access, maybe
- **RESOURCE VALUE**



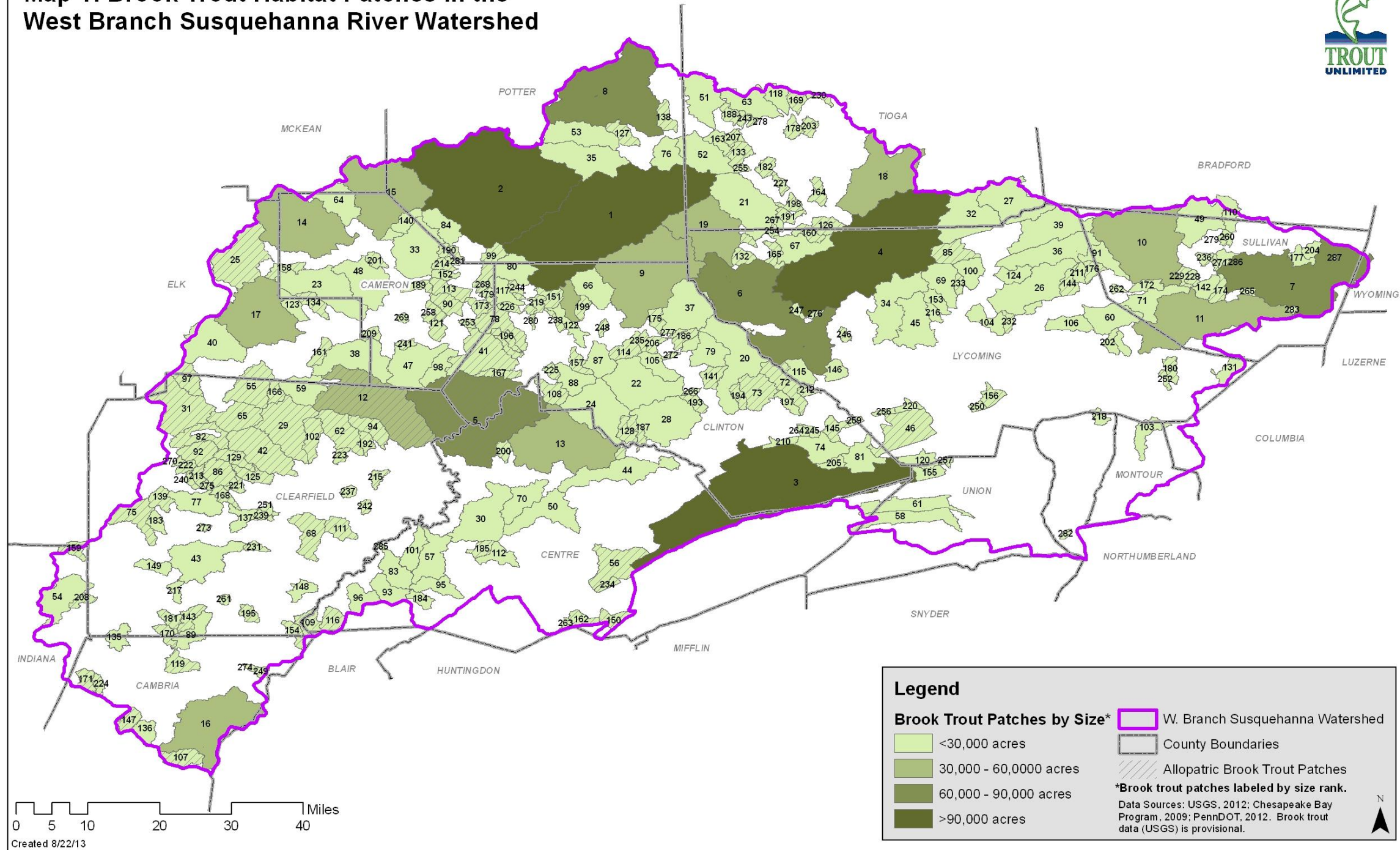
Qualifying Brook Trout Resource Value

Chesapeake Bay watershed projects

- Personal creel survey!
- Talk to your fisheries biologist
- Geospatial data
 - 2006 EBTJV assessment
 - TU's Conservation Success Index
 - EBTJV "best for protection" maps
 - New catchment/patch data



Map 1: Brook Trout Habitat Patches in the West Branch Susquehanna River Watershed





Thank you!

Kevin Anderson

kanderson@tu.org

703.284.9420

