



“Crediting Conservation”

*Exploring policy options for
nutrient reduction value*

April 22, 2013 Maintain Healthy Watersheds GIT Meeting

Jack Frye, Virginia Director
Chesapeake Bay Commission

Chesapeake Bay Commission

Policy for the Bay

- Tri-State Legislative Commission
 - PA, MD, VA
- Established by state law
- 7 Members Each (21 total)
 - 2 Senate
 - 3 House
 - 1 Cabinet-level
 - 1 Citizen at Large



Chesapeake 2000 (C2K)

- Over 100 Commitments
- 5 Broad Goals
 - Water Quality
 - Habitat
 - Living Resources
 - Sound Land Use
 - Stewardship



Chesapeake 2000 (C2K)



Watershed Implementation Plans

■ ~~Over 100 Commitments~~

■ ~~5~~ 1 Overarching Goals

■ Water Quality

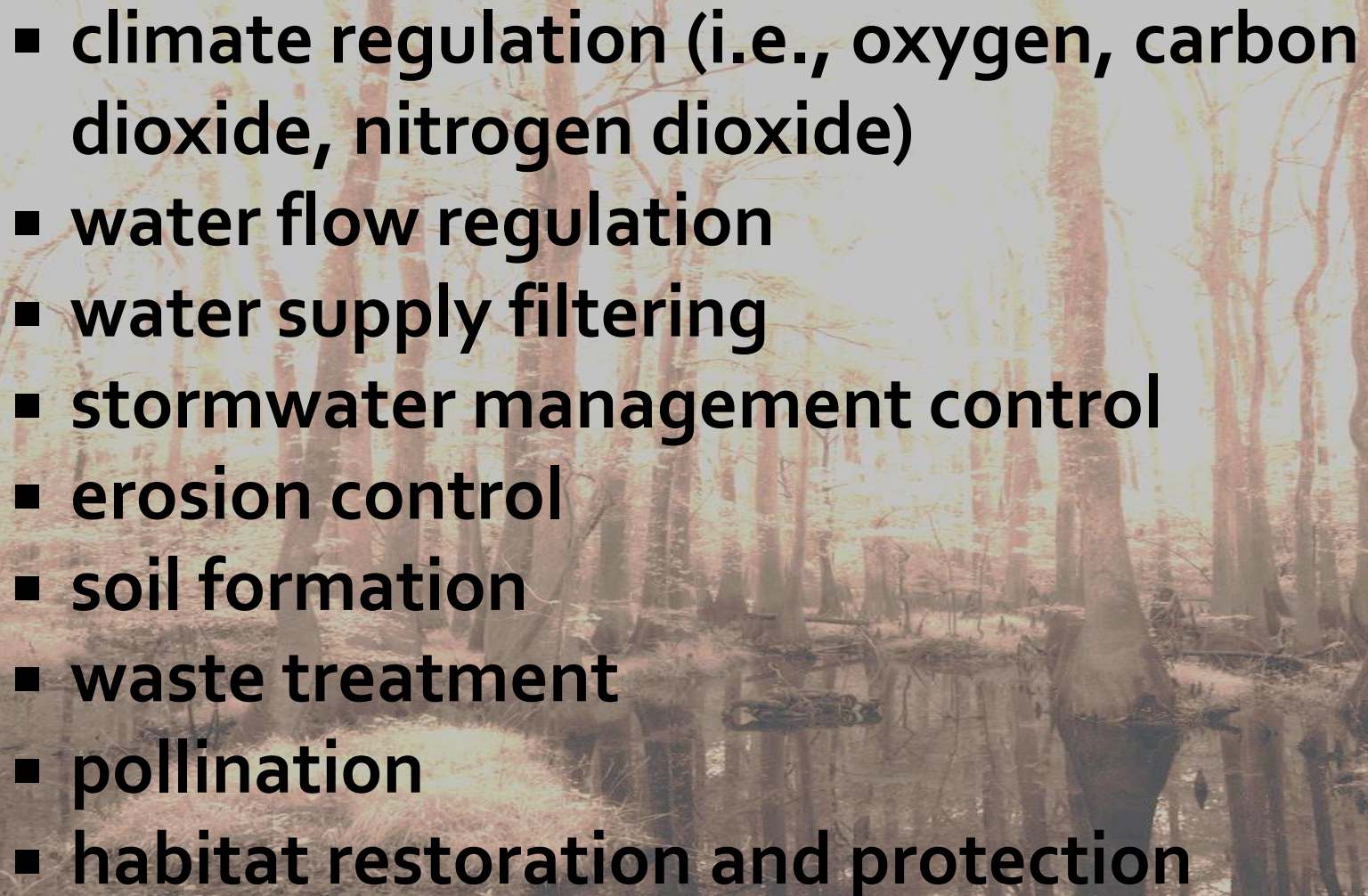
- Habitat
- Living Resources
- Sound Land Use
- Stewardship

Dissolved oxygen
Chlorophyll A
Water clarity

TMDL Focus



Fundamental Ecosystem Services

- 
- climate regulation (i.e., oxygen, carbon dioxide, nitrogen dioxide)
 - water flow regulation
 - water supply filtering
 - stormwater management control
 - erosion control
 - soil formation
 - waste treatment
 - pollination
 - habitat restoration and protection

Progressive Attention

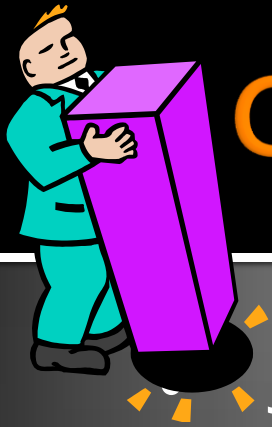


- 2001 "Keeping Our Commitment: Preserving Land in the Chesapeake Watershed", CBC
- 2010 "Conserving Chesapeake Landscapes", CBC/CC
- 2011 GIT 4 requested STAC workshop
- 2012 STAC workshop- adjusting pollution processing rates of natural landscapes
- 2013 CBC *"Crediting Conservation" Report*

Policy Option Concepts

1. Land protection as “credit multiplier” for BMPs
2. Water quality value by attribute(s)
3. Mitigation scheme- preservation can offset loading
4. Preserving land targeted for development by 2025






Conclusion: *Opportunity Exists*

- Jurisdictions' current systems for capturing, tracking and reporting land use data and tracking changes is inadequate
- Watershed Model would need refinement to use more specific spatial and temporal data

The TMDL focus on *water quality* in effect “devalues” land conservation as a tool to protect the health and resiliency of the Bay;
change this!

The Beginning; Not the End

- 
- “Scoping Activity” for options
 - Next Steps: GIT₄?
 - Explore options in greater depth
 - Understand specific needs for each; what changes are needed?
 - Who needs to make changes? Bay Program? EPA? Jurisdictions?

CBC is ready to assist with state and federal policy making

Thank you!
Any questions?



Chesapeake Bay Commission
Policy for the Bay

Jack Frye
Virginia Director, CBC
804-370-5888
jfrye@chesbay.us

