



TRACKING PROJECT

Vulnerability Assessment

THREE-LEGGED STOOL



1) Identification

3) Protection

2) Vulnerability



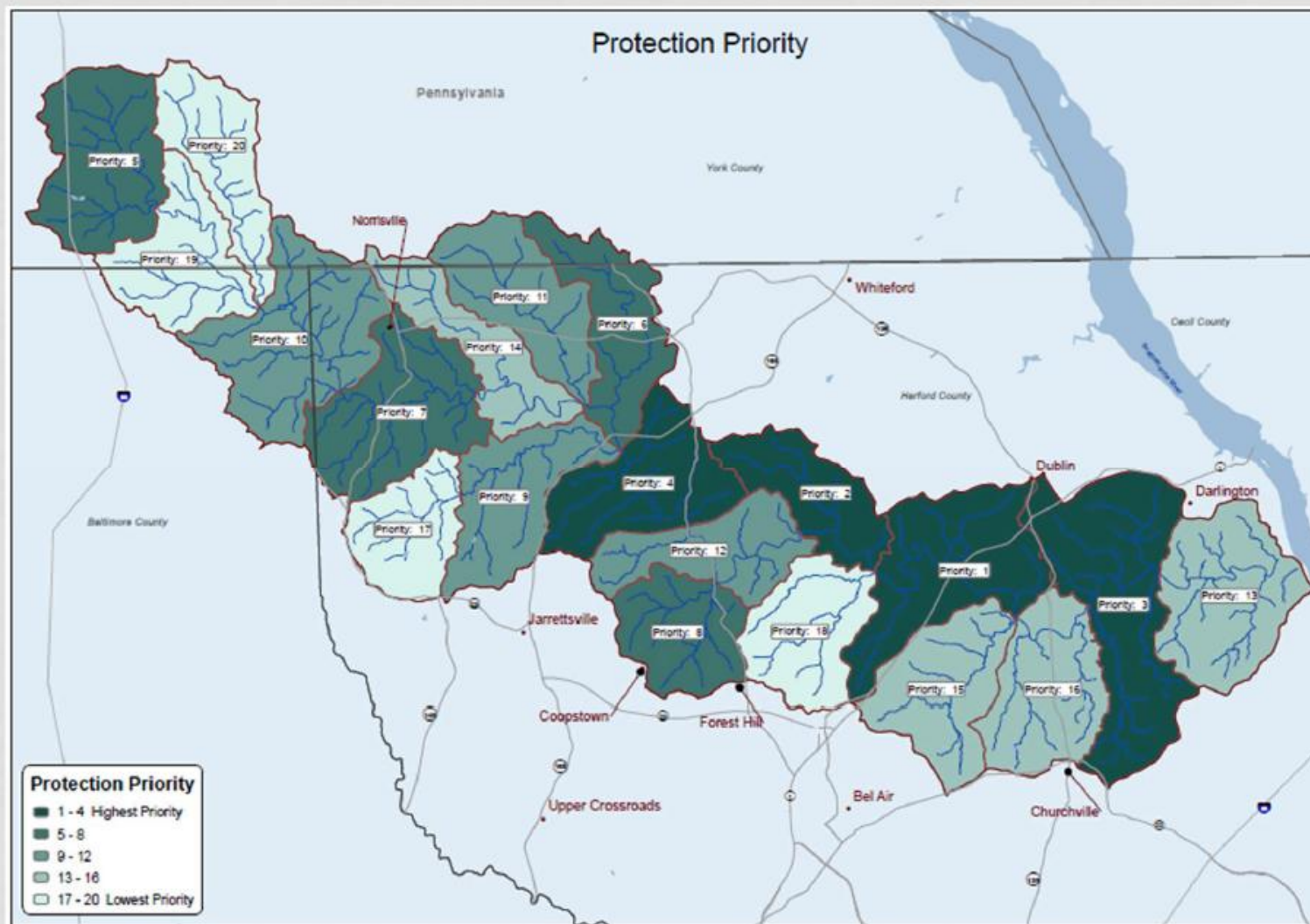
Application Ideas: Communication Uses

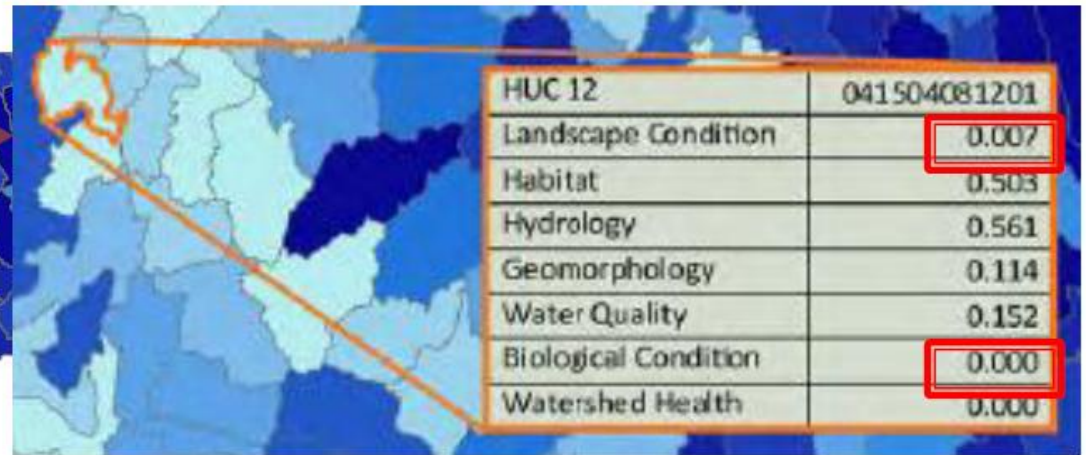
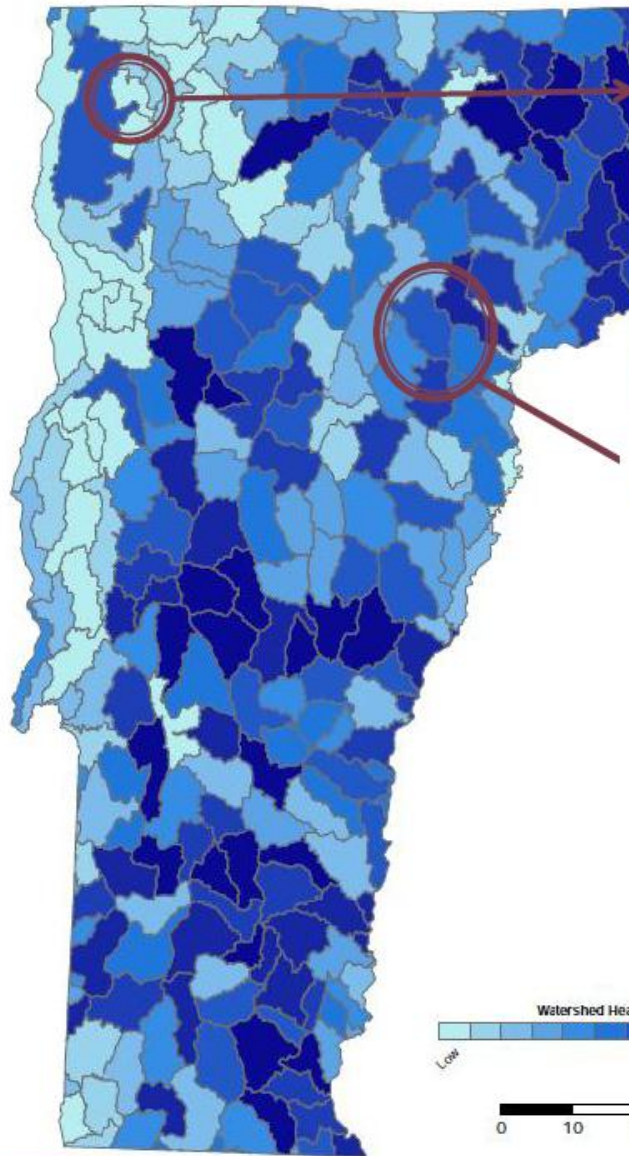
- Communicate economic benefits of protecting HWs to “sell” the value of environmental programs
- Build public support for protection by informing people about vulnerabilities in certain watersheds
- Educate the public about areas vulnerable to groundwater/well issues
- Use in interactions between DNR and county staff during county land and water management plan development

Benefits & Outcomes

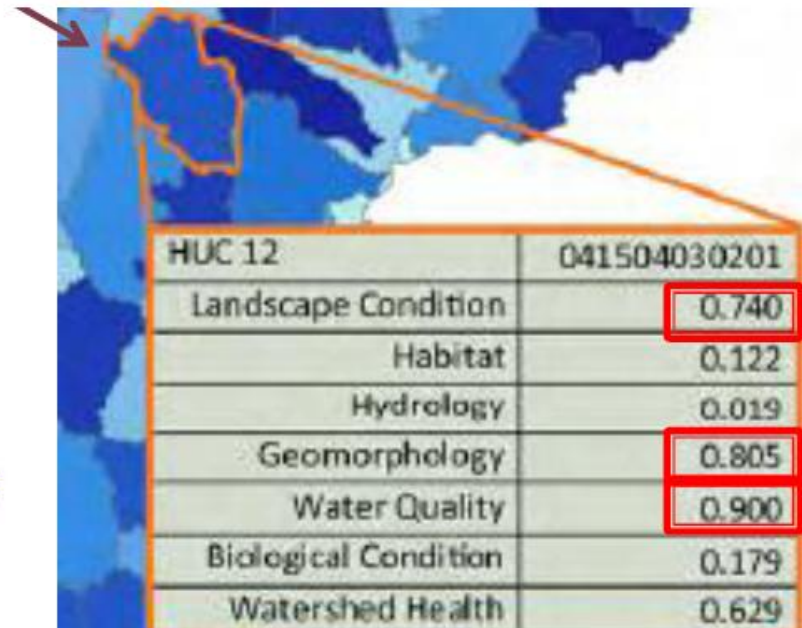
- Increase communication between programs.
- Foster protection strategies that are coordinated, multi-agency, and statewide.
- Encourage leveraging of resources across state agencies and with other partners.
- Increase understanding of the connection between landscapes and aquatic system health.
- Prioritize individual watersheds for targeted assessments and protection efforts.

DEER CREEK, MARYLAND PRIORITIZATION





Recoverability “challenged” watershed
Some social commitment to implementation



Recoverability certain
Strong social commitment to implementation

Protection and Restoration

- ▶ HWI can indicate priorities for where to protect *and* where to restore
- ▶ Coupled with an assessment of Recovery Potential, waters can be slotted into four categories

