

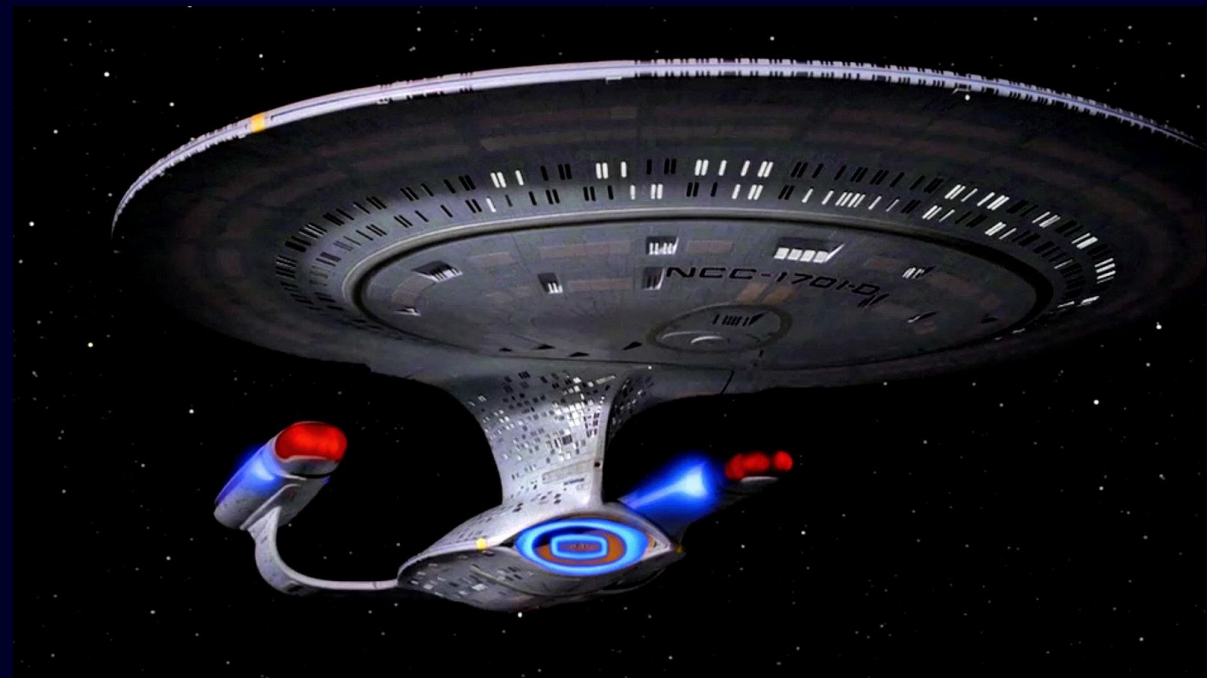


CHESAPEAKE BAY WATERSHED LAND COVER, LAND USE, AND HYDROGRAPHY: THE NEXT GENERATION

Peter Claggett, Research Geographer
U.S. Geological Survey

April 9, 2020
CBP Management Board Meeting

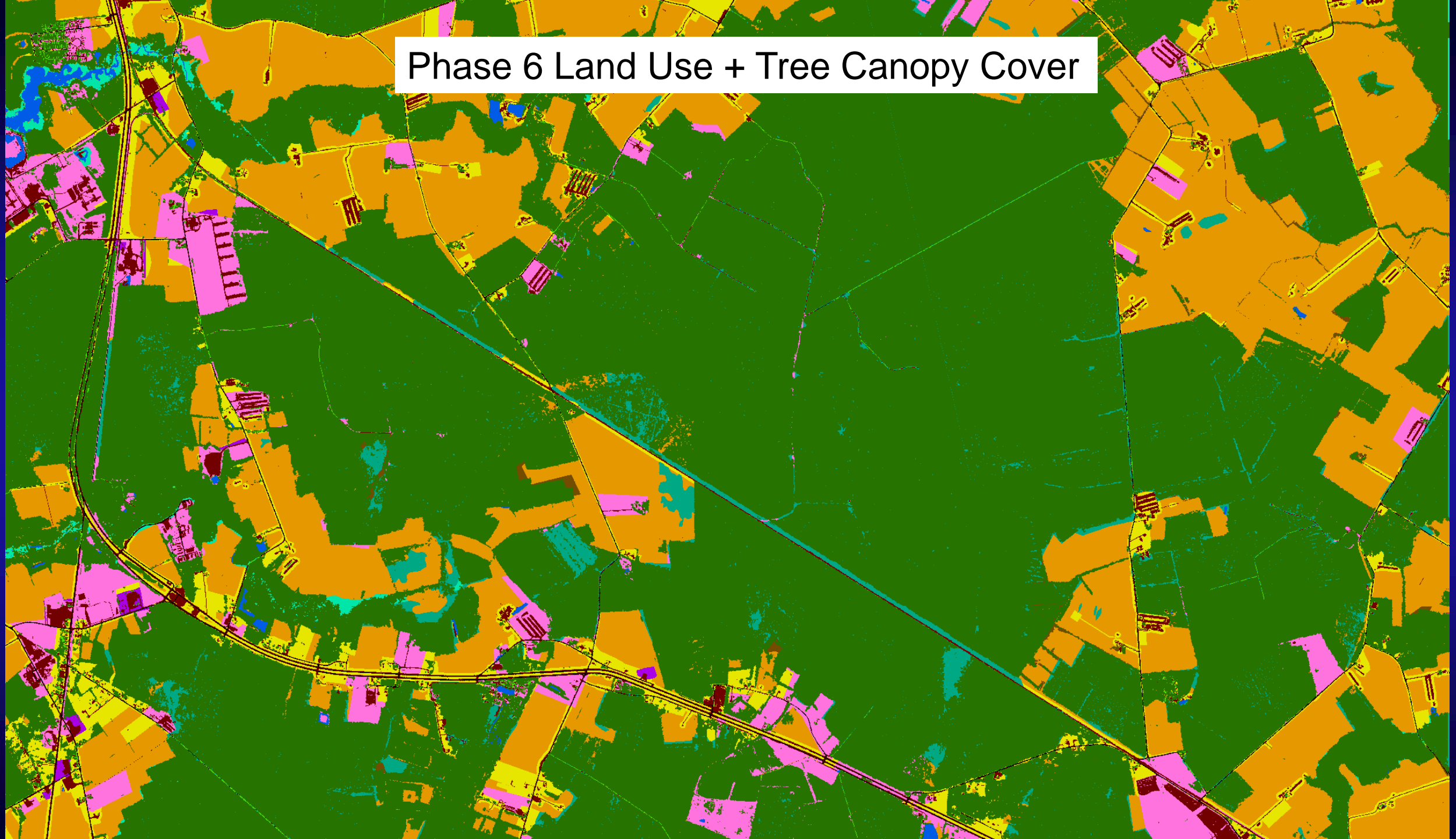
U.S. Department of the Interior
U.S. Geological Survey



Why Revise CBP Land Uses?

- Differentiate daylighted vs shaded streams, important for evaluating healthy watersheds supporting cold-water fisheries.
- Preserve all land cover information within the land use dataset.
- Improve mapping of floodplain and tidal wetland zones.
- Correct over-estimation of agricultural land and turf grass in some counties.
- Correct for errors associated with class confusion (e.g., solar fields and impervious cover, fragmented forests and mixed open).

Phase 6 Land Use + Tree Canopy Cover



Lower Deer Creek Watershed
Harford County, MD

National Hydrography Dataset- High Resolution (24K)

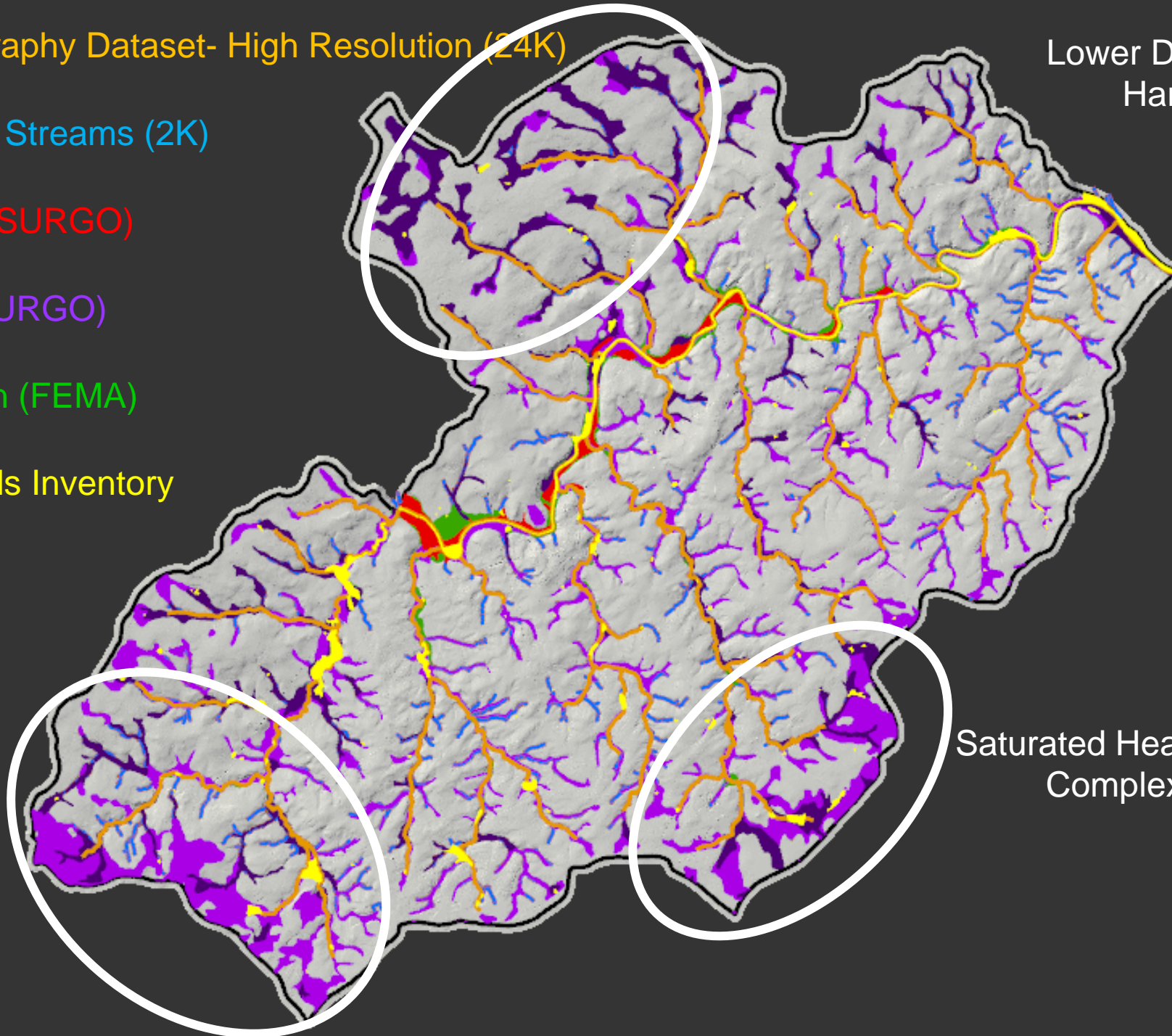
Hyper-resolution Streams (2K)

Flooded Soils (SSURGO)

Hydric Soils (SSURGO)

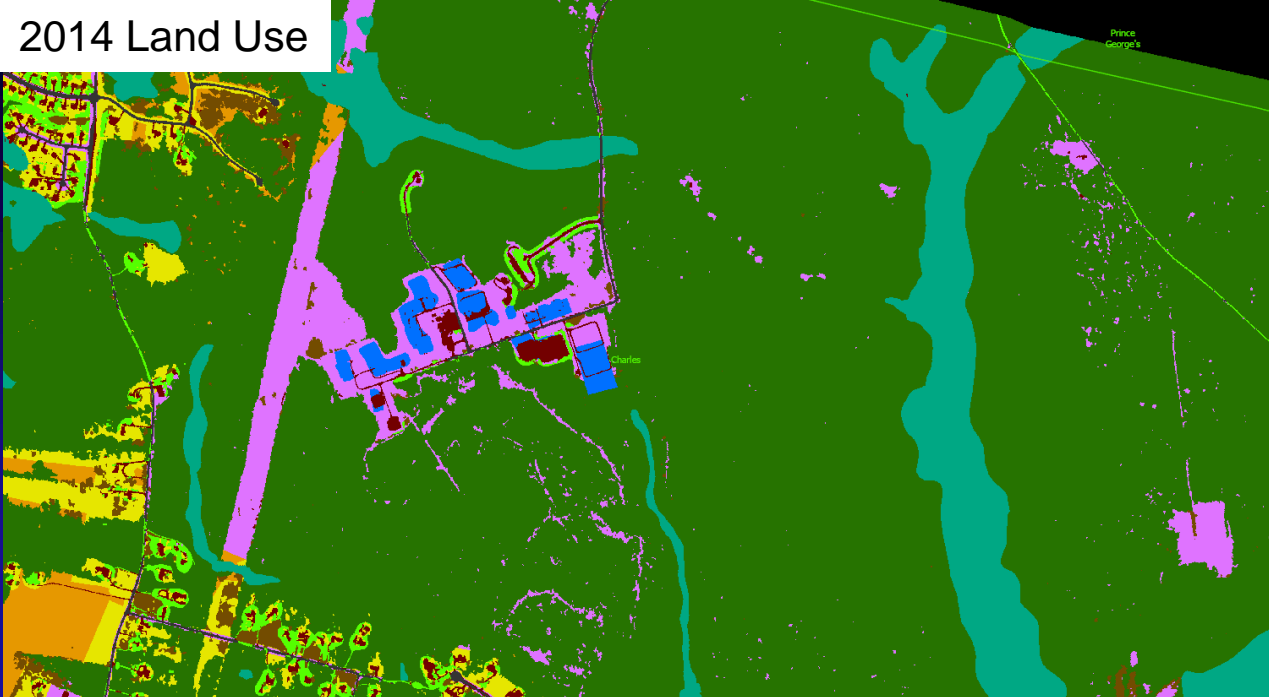
100-yr Floodplain (FEMA)

National Wetlands Inventory

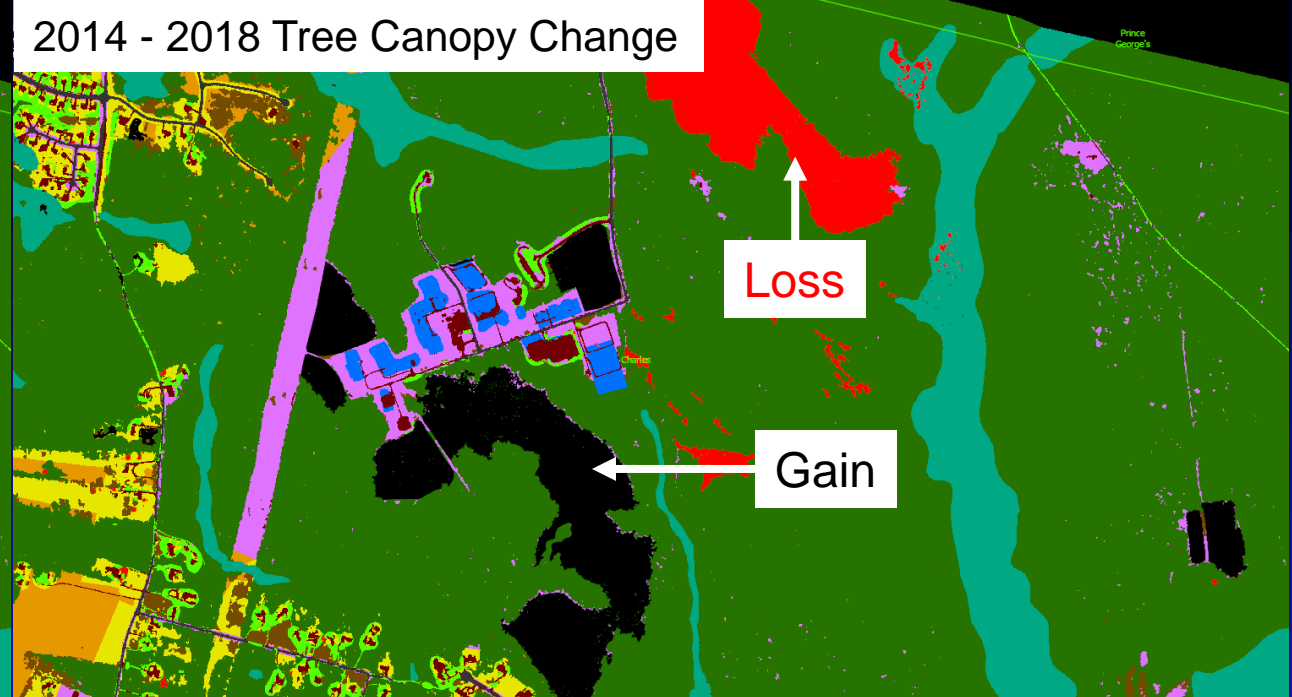


Saturated Headwater
Complex?

2014 Land Use



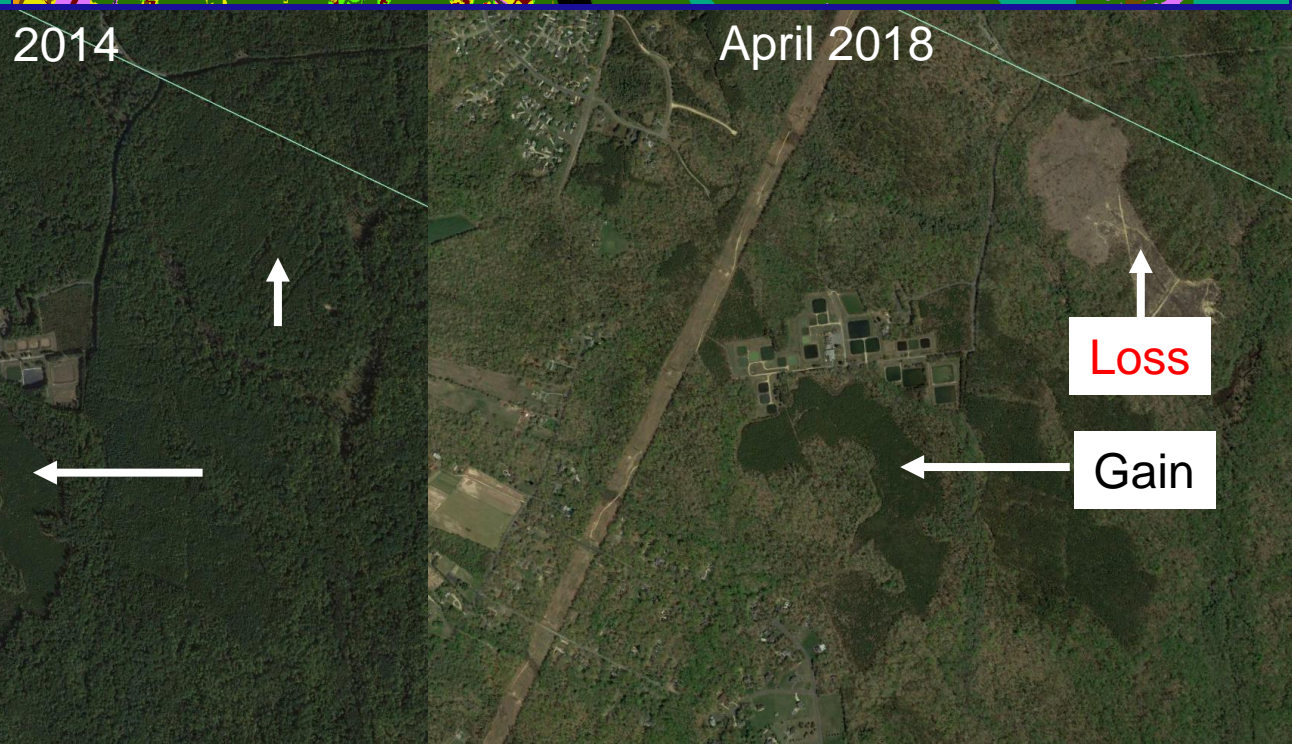
2014 - 2018 Tree Canopy Change



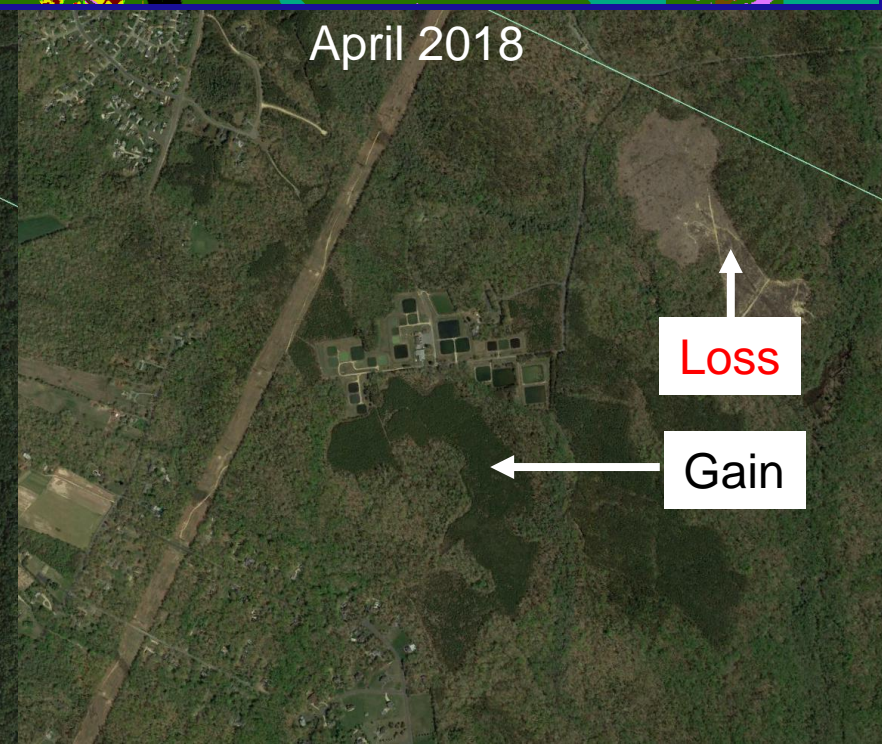
October 2012



October 2014



April 2018



Tree Canopy Change in Two Suburban Counties

Prince George's County: 2014 - 2018

TC Loss (7,673 acres):

- 59% of loss change occurred within forest or wetlands
- 41% of loss occurred in developed areas

TC Gain (518 acres):

- 16% of gain occurred within forest or wetlands
 - shrub/scrub; edge of forest
- 54% of gain occurred in developed areas
- 29% of gain occurred on agricultural lands

Anne Arundel County: 2014 - 2018

TC Loss (2,544 acres):

- 57% of loss change occurred within forest or wetlands
- 42% of loss occurred in developed areas

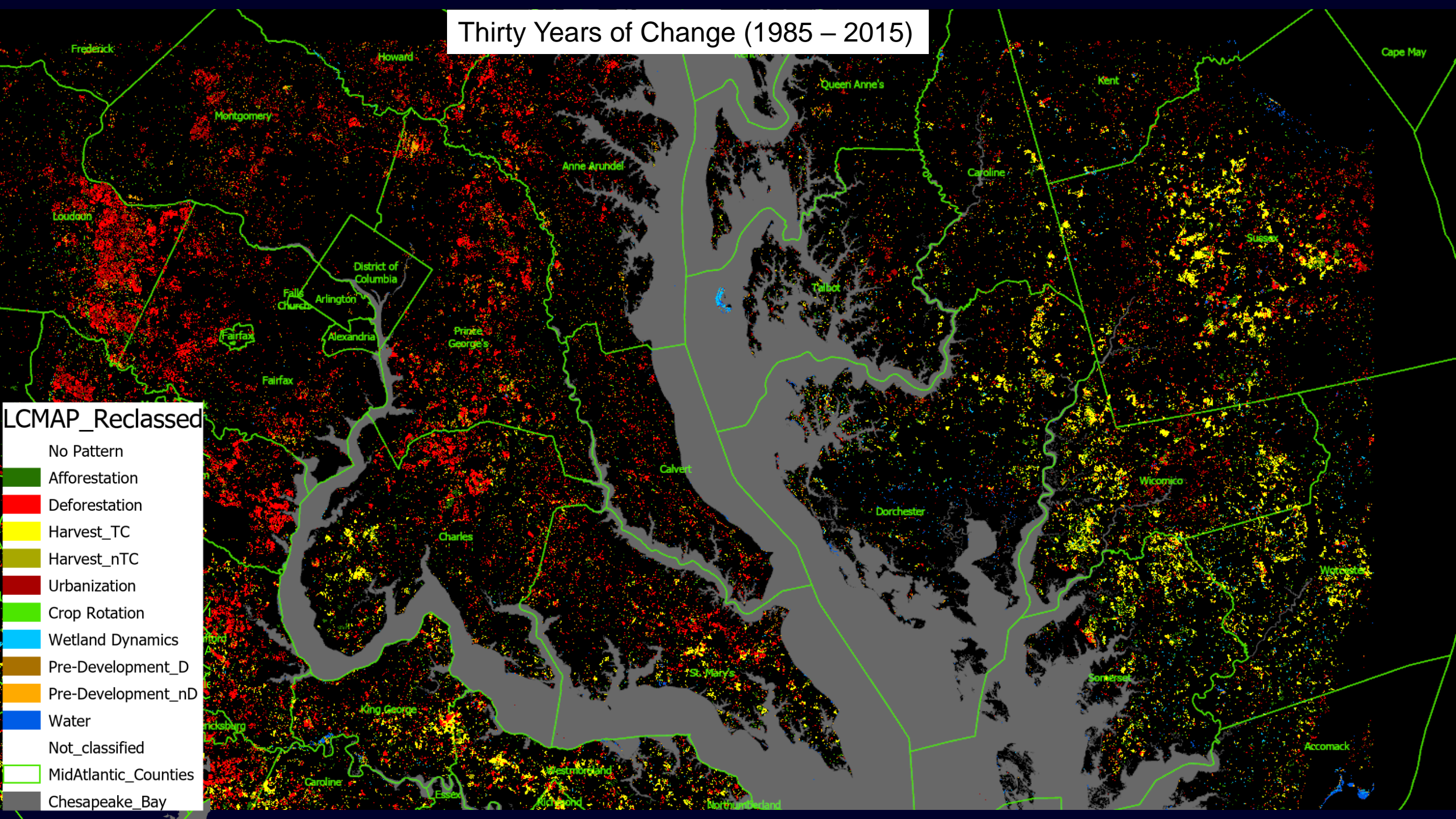
TC Gain (188 acres):

- 9% of gain occurred within forest or wetlands
 - shrub/scrub; edge of forest
- 55% of gain occurred in developed areas
- 35% of gain occurred on agricultural lands

Thirty Years of Change (1985 – 2015)

LCMAP_Reclassified

- No Pattern
- Afforestation
- Deforestation
- Harvest_TC
- Harvest_nTC
- Urbanization
- Crop Rotation
- Wetland Dynamics
- Pre-Development_D
- Pre-Development_nD
- Water
- Not_classified
- MidAtlantic_Counties
- Chesapeake_Bay



Land Use Overlays*

Existing

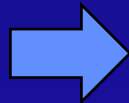
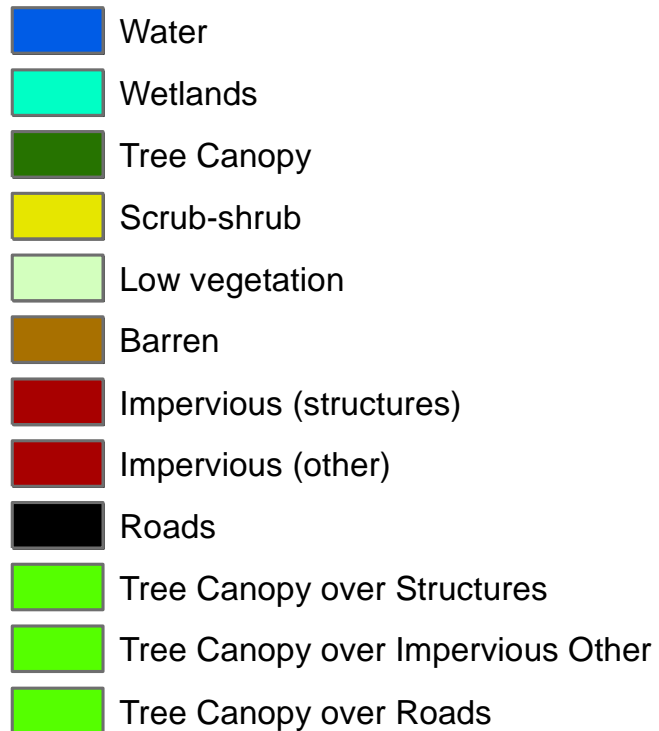
- Federal Lands
- MS4 Areas
- Sewer Service Areas
- FEMA Floodplains (HAZUS)
- Frequently Flooded Soils (gSSURGO)
- National Wetlands Inventory
- State Wetlands Inventories
- Cropland (Cropland Data Layer)
- Pasture (Cropland Data Layer)
- Parcels
- Land Use (County/City/State)
- Surface Mines
- Landfills
- Roads

Proposed (new)

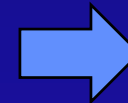
- Deciduous Trees (from land cover)
- Evergreen Trees (from land cover)
- Ground Elevation (1m, LiDAR DEM)
- Ground Elevation (1m, LiDAR DTM)
- Surface Elevation (1m, LiDAR DSM)
- Classified Point Cloud (normalized to the ground)
- Height (normalized DSM to ground elevation)
- Intensity (1m, LiDAR)
- Compound Topographic Index (3m, LiDAR)
- Poultry Houses (USGS polygons- for DelMarVA)
- Solar fields (points from VA-DEQ, other?)
- Center-Pivot Irrigated Fields (DE)
- Historical Land Cover Change (1985 – 2017; USGS-LCMAP)
- Agricultural business addresses (ESRI)
- Transmission Lines (TBD)
- Buildings (Microsoft)
- Marine/ Lentic/ Lotic shore

2013 Chesapeake Bay Watershed Land Cover/Use Data

1m Land Cover



1m Land Use



10m Land Cover/Use



Proposed New CBP Land Use Classification Scheme 03.19.2020

Phase 6 Land Use Perspective

(16 additional classes):

1. Water (WAT; from 1 to 7 classes)

- 1. Lotic
 - 1. Estuary
 - 2. Lakes & Ponds
- 2. Lentic
 - 1. Streams
 - 1. Daylighted
 - 2. Shaded
 - 3. Buried
 - 2. Ditches
 - 1. Daylighted
 - 2. Shaded

2. Impervious, Roads (IR; no change)

3. Impervious, Non-Roads (INR; 2 to 4 classes)

- 1. Structures
- 2. Other Impervious
- 3. Solar fields
- 4. Railroads

4. Tree Canopy over Impervious (TCI; 1 to 2)

- 1. Tree Canopy over Structures
- 2. Tree Canopy over Other Impervious

11. Mixed Open (1 to 7 classes)

- 1. Natural Succession
- 2. Timber Harvest
- 3. Utility Rights-of-Ways
- 4. Bare Construction
- 5. Bare Shore
- 6. Extractive
- 7. Fragmented Forest (< 1 acre)

12. Cropland (CRP; 1 to 2 classes)

- 1. Cropland
- 2. Orchard/vineyard

13. Pasture (PAS; no change)

5. Turf Grass (TG; no change)

6. Tree Canopy over Turf Grass (TCT; no change)

7. Forest (FORE; change in name only)

- 1. Contiguous (> 1 acre)

8. Tidal Wetland (WLT; updated tidal zone overlay)

9. Non-Tidal Floodplain Wetland (WLF; updated floodplain overlay to include headwaters)

10. Non-Tidal Other Wetlands (WLO; no change)

Proposed Final CBP Land Use Classification

1. Water (7)

1.1 Lotic

- 1.1.1 Estuary
- 1.1.2 Lakes & Ponds

1.2 Lentic

- 1.2.1 Streams
 - 1.2.1.1 Daylighted
 - 1.2.1.2 Shaded
 - 1.2.1.3 Buried
- 1.2.2 Ditches
 - 1.2.2.1 Daylighted
 - 1.2.2.2 Shaded

2. Developed (13)

2.1 Infrastructure

- 2.1.1 Roads
- 2.1.2 Railroads
- 2.1.3 Tree Canopy over Roads
- 2.1.4 Structures
- 2.1.5 Tree Canopy over Structures
- 2.1.6 Other Impervious
- 2.1.7 Tree Canopy over Other Impervious
- 2.1.8 Utility Rights-of-Ways
 - 2.1.8.1 Barren
 - 2.1.8.2 Herbaceous
 - 2.1.8.3 Scrub-shrub

2.2 Bare Construction

2.3 Turf Grass

2.4 Tree Canopy over Turf Grass

3. Forest (5)

- 3.1 Contiguous (> 1 acre)
- 3.2 Fragmented (< 1 acre)
- 3.3 Natural Succession (e.g., Fallow)
 - 3.3.1 Barren
 - 3.3.2 Herbaceous
 - 3.3.3 Scrub-shrub

4. Production (14)

4.1 Agriculture

- 4.1.1 Cropland
 - 4.1.1.1 Barren
 - 4.1.1.2 Herbaceous
- 4.1.2 Pasture
 - 4.1.2.1 Barren
 - 4.1.2.2 Herbaceous
- 4.1.3 Orchard/vineyard
 - 4.1.3.1 Barren
 - 4.1.3.2 Herbaceous
 - 4.1.3.3 Scrub-shrub

4.2 Timber Harvest

- 4.2.1 Barren
- 4.2.2 Herbaceous
- 4.2.2 Scrub-shrub

4.3 Extractive

- 4.3.1 Barren
- 4.3.2 Herbaceous
- 4.3.3 Scrub-shrub

4.4 Solar fields

5. Wetland (19)

5.1. Tidal

- 5.1.1. Open water
- 5.1.2. Barren
- 5.1.3. Herbaceous
- 5.1.4. Scrub-shrub
- 5.1.5. Contiguous Forest
- 5.1.6. Fragmented Forest

5.2. Non-tidal

- 5.2.1. Floodplain/ Headwater
 - 5.2.1.1. Open water
 - 5.2.1.2. Barren
 - 5.2.1.3. Herbaceous
 - 5.2.1.4. Scrub-shrub
 - 5.2.1.5. Contiguous Forest
 - 5.2.1.6. Fragmented Forest
- 5.2.2. Other
 - 5.2.2.1. Open water
 - 5.2.2.2. Barren
 - 5.2.2.3. Herbaceous
 - 5.2.2.4. Scrub-shrub
 - 5.2.2.5. Contiguous Forest
 - 5.2.2.6. Fragmented Forest

5.3. Bare shore