

Chesapeake Bay Landscape Professional Certification Initiative

Suzanne Etgen, CCLC Board Member
July 10, 2014



Chesapeake
Conservation
Landscaping
Council

UNIVERSITY OF
MARYLAND
EXTENSION
Solutions in your community



Chesapeake Conservation Landscaping Council

*Supporting the landscaping community
...transforming the Chesapeake Bay*

Who is CCLC?

Local Government Stormwater Programs
Non-profit Organizations
Landscape Professionals
State and Federal Agencies
Educators



SINCE 2003

Maryland Sea Grant Extension Watershed Protection & Restoration Program



University of Maryland Extension Program and Sea Grant College

Watershed Assistance Collaborative Partner

Team of 5 “on the ground” watershed restoration specialists provide services to local governments and community partners:

- capacity building
- grants assistance
- project implementation assistance
- outreach and education efforts



Chesapeake RiverWise Communities Partner – SMART BMP Tracking Tool

UNIVERSITY OF
MARYLAND
EXTENSION
Solutions in your community

Virginia DGIF and CZM



- Backyard Habitats
- Master Naturalist Trainers
- CCLC Board Member
- Native Plants Marketing Partner
- Blue-Green Infrastructure Plans
- Regional Phase II WIP Support
- Climate Change
- Native Plants Marketing Partner
- Regional Native Plant Campaigns

Wetlands Watch

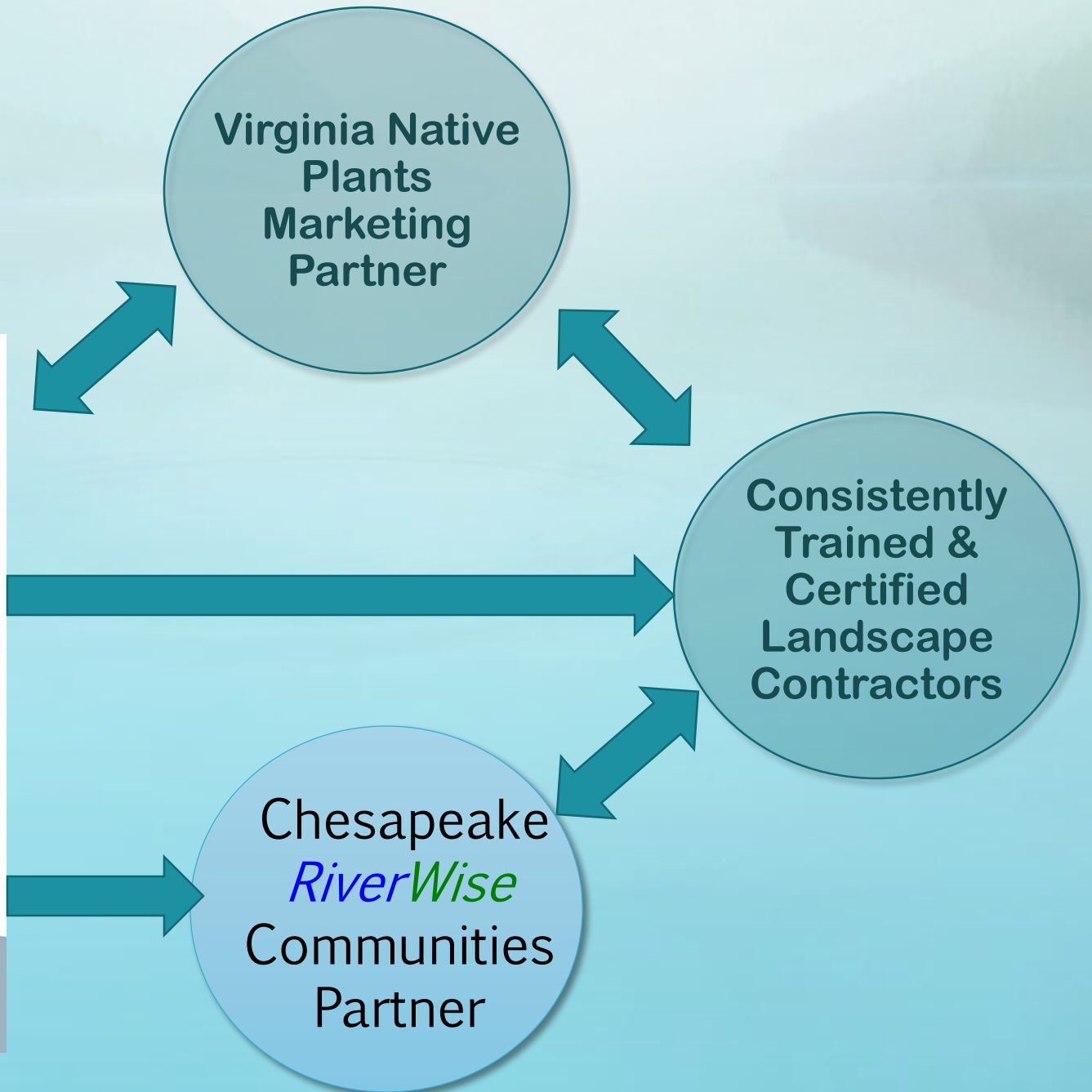
**Reducing Nutrients on
Private Property:
Evaluation of Programs, Practices,
and Incentives**



A Collaborative Summit:
Protecting Water Quality
Through Actions on
Urban-Suburban Properties

February 13-14, 2013
Williamsburg, VA

Project Partners and Co-Authors:
Wetlands Watch
Alliance for the Chesapeake Bay
Virginia Institute of Marine Science
University of Virginia's Institute for Environmental Negotiation
August 2, 2013



Protect Our Investments



Thousands of small scale green infrastructure projects are installed each year.

By local government – to meet stormwater & pollution reduction targets.

By non-profit groups, stewards, and homeowners to retrofit residential and community properties.

By developers who are required to use Environmental Site Design on all new & re-development projects.

NFWF *invested \$20 million* stewardship and BMP incentive programs in Virginia (2006 – 2011).

Many projects FAIL because they aren't *designed, installed or maintained* properly.



48% of rain gardens surveyed in 2012 Severn River Watershed study FAILED to protect water quality.

65% of rain gardens surveyed in 2008 Fairfax County study lacked adequate ponding depths...3 out of 20 didn't infiltrate.

Common problems are landscape-related issues.

Can you find the rain garden?



A community amenity or a candidate for the mower?



If we want to protect our investment, we need an army of Landscape Professionals to create and maintain *Functional* and *Aesthetic* projects.



Chesapeake Bay Landscape Professional Certification will provide a standardized evaluation of the skills and knowledge of landscape contractors and a reliable marketing tool for qualified professionals.

CBLP will protect our investment in the Bay.



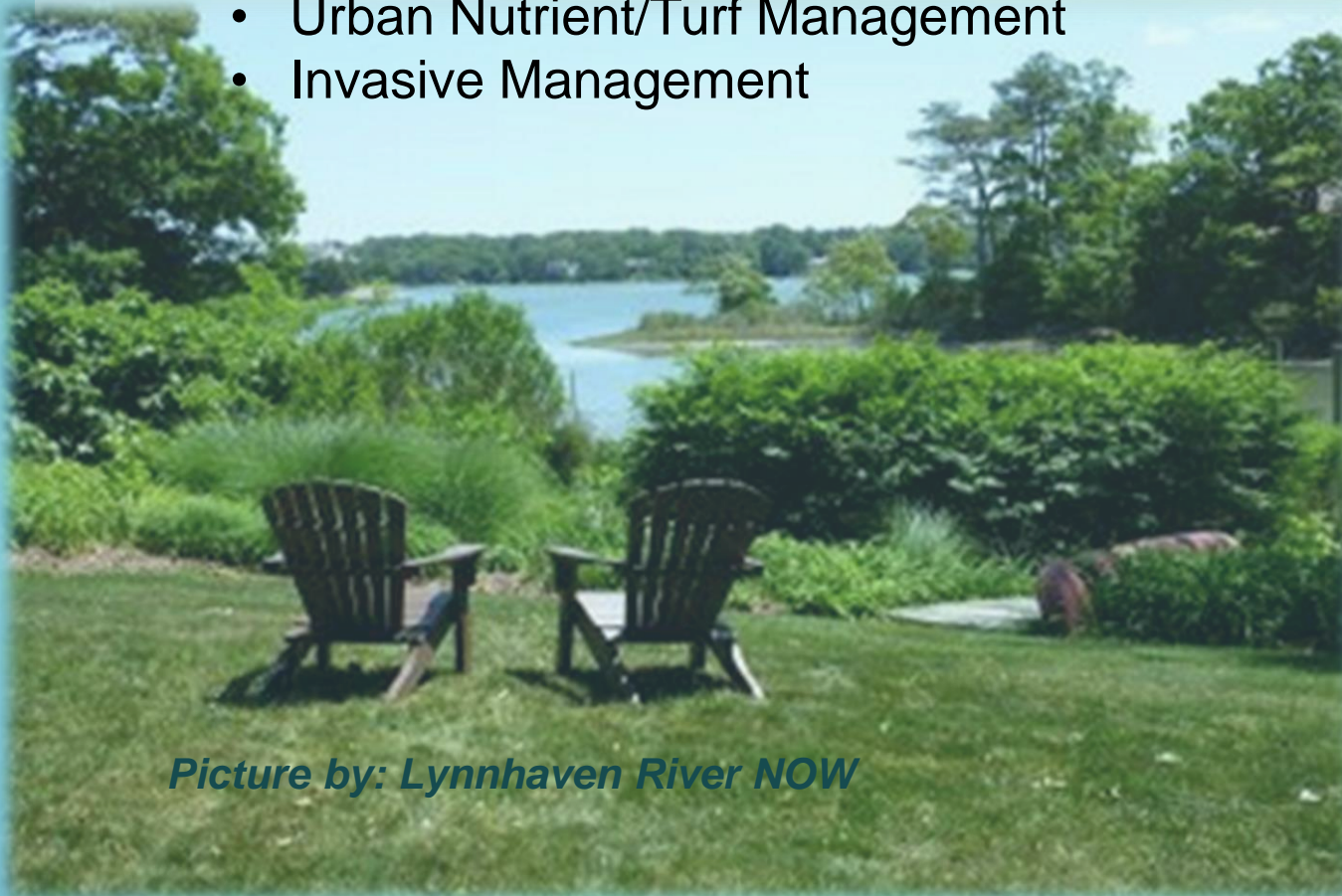
Why CBLP Certification?

- The demand for small scale landscape restoration practices on private *property must increase* to meet nutrient and sediment reduction goals.
- Anticipated benefits are not being realized because many are improperly designed, built or maintained.
- Local governments, non-profits and property owners need qualified professionals to implement practices.
- Landscape Professionals need a centralized method to gain and market skills.



Certification Focus - “Small Scale” Practices

- Rain Barrels and Cisterns
- Rain Gardens and Bio Swales
- Conservation Landscaping with Native Plants
- Tree and Buffer Plantings
- Urban Nutrient/Turf Management
- Invasive Management



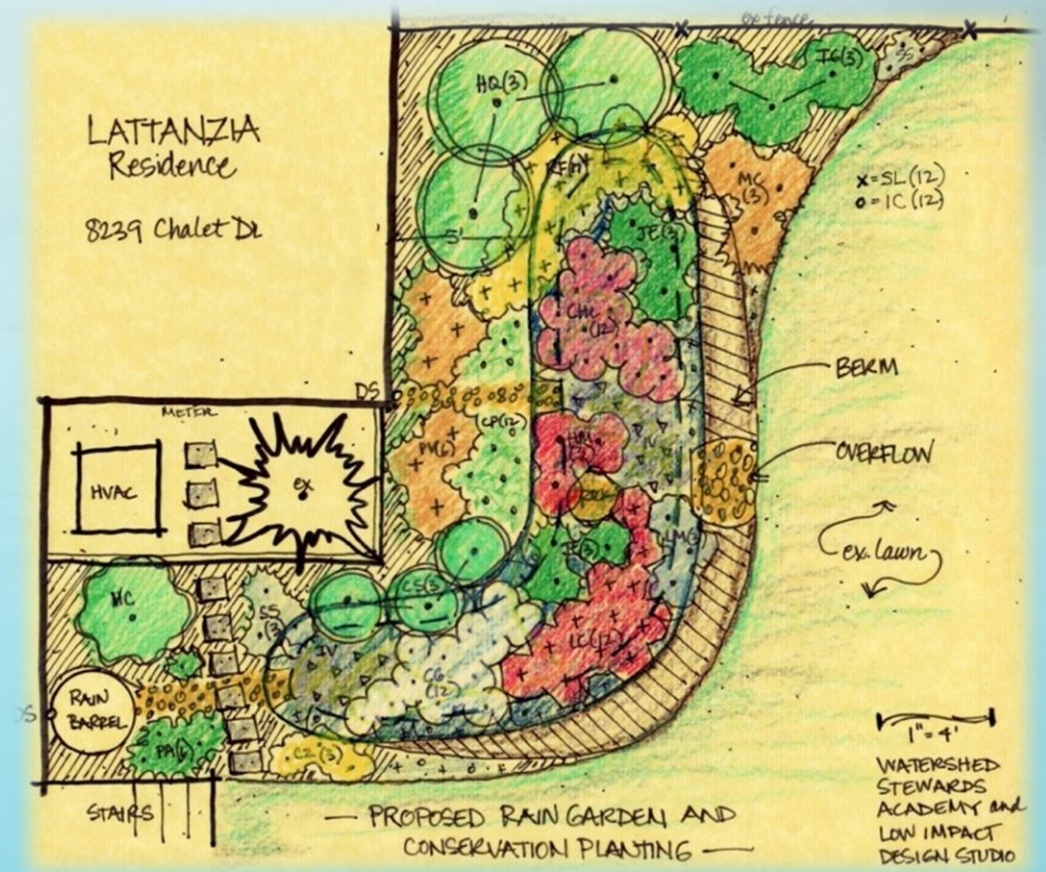
Picture by: Lynnhaven River NOW



Chesapeake Bay Landscape Professional Certification Program (CBLP)

Three Tracks:

- Design
- Installation
- Maintenance, including Turf and Invasive Management



CBLP Certification Program Details

- Individual certification for landscape professionals
- Developed collaboratively and concurrently in Maryland and Virginia.
- Require application, training and/or demonstrated experience and an exam.
- Align with the State Stormwater Manuals to ensure pollution credit compliance.
- Developed with leaders who have been training landscape professionals.
- Nest within existing trade certifications.

Consortium Partner Roles

- Maryland Certification Coordinator: CCLC
- Virginia Certification Coordinator: Wetlands Watch
- Organizational and certification development and management.
- Contribute collective expertise towards core competencies, curriculum and exam development.
- Focused oversight, coordination & alignment in Maryland and Virginia



Chesapeake
Conservation
Landscaping
Council

UNIVERSITY OF
MARYLAND
EXTENSION

Solutions in your community



Supporting Partner Roles

- Community colleges, trade organizations and experienced trainers offer preparatory training and participate in the CBLP curriculum and exam development.
- Local governments, non-profits, and stormwater contractors agree to preferential use of CBLPs for projects.
- Trade organizations, non profit watershed groups promote certification and members pilot the certification as candidates.



CBLP Development Timeline

- Recruit Funding
- Engage Partners
- Hire Certification Coordinator

2013-14

- Convene Workgroups
- Develop Certification Structure and Exam
- Develop Training Curriculum & Pilots
- Pilot Certification in MD & VA

2014-15

- Expand Certification to Other Bay Jurisdictions

2016

Once developed, CBLP will be financially self sustaining.

Chesapeake Bay Landscape Professional Certification will provide a standardized evaluation of the skills and knowledge of landscape contractors and a reliable marketing tool for qualified professionals.

CBLP will protect our investment in the Bay.



Become a CBLP Partner

