

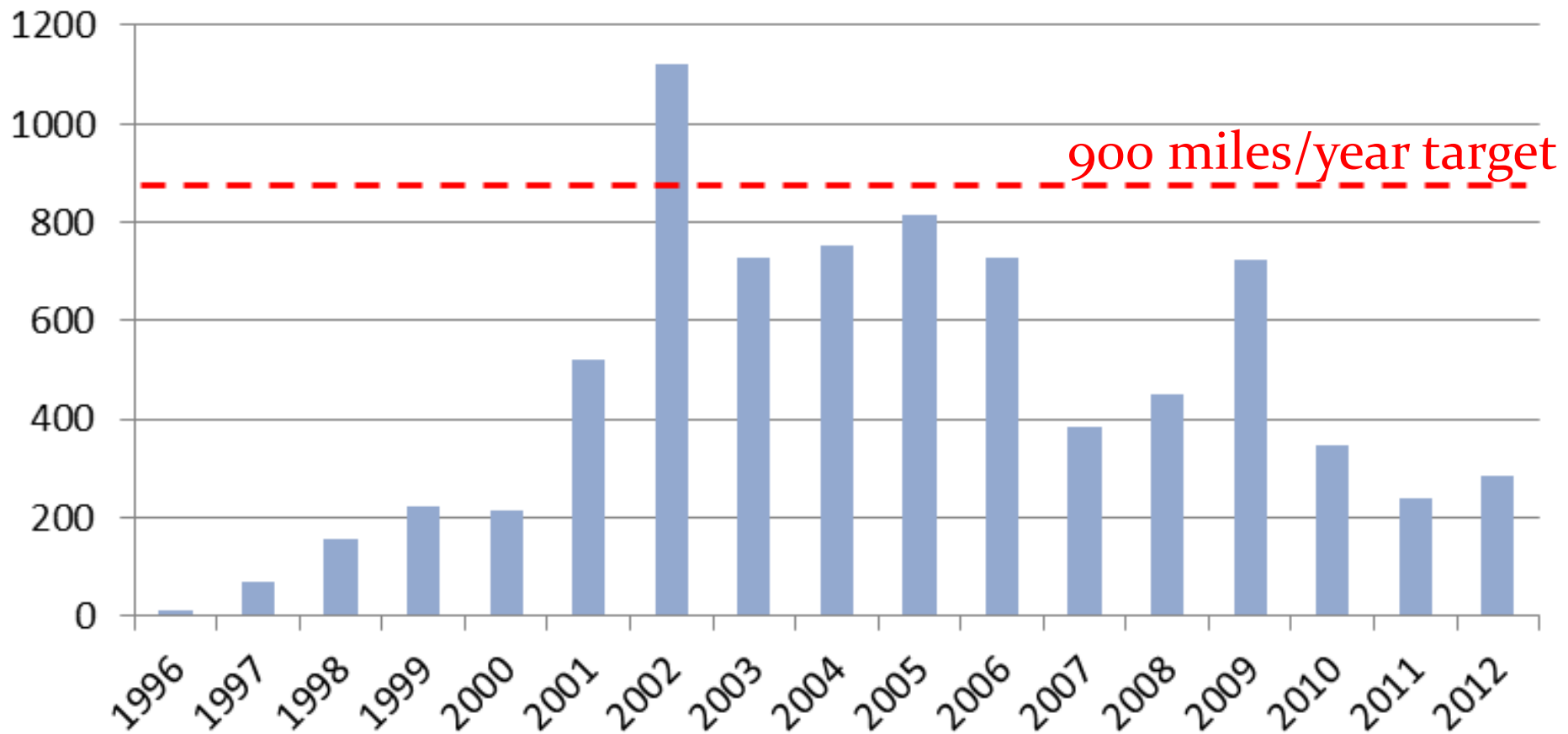
# Forest Buffers in Chesapeake TMDL

From “Buffering the Bay” Report

<http://tinyurl.com/bufferingthebay>

# Past Progress – Miles Reported by States

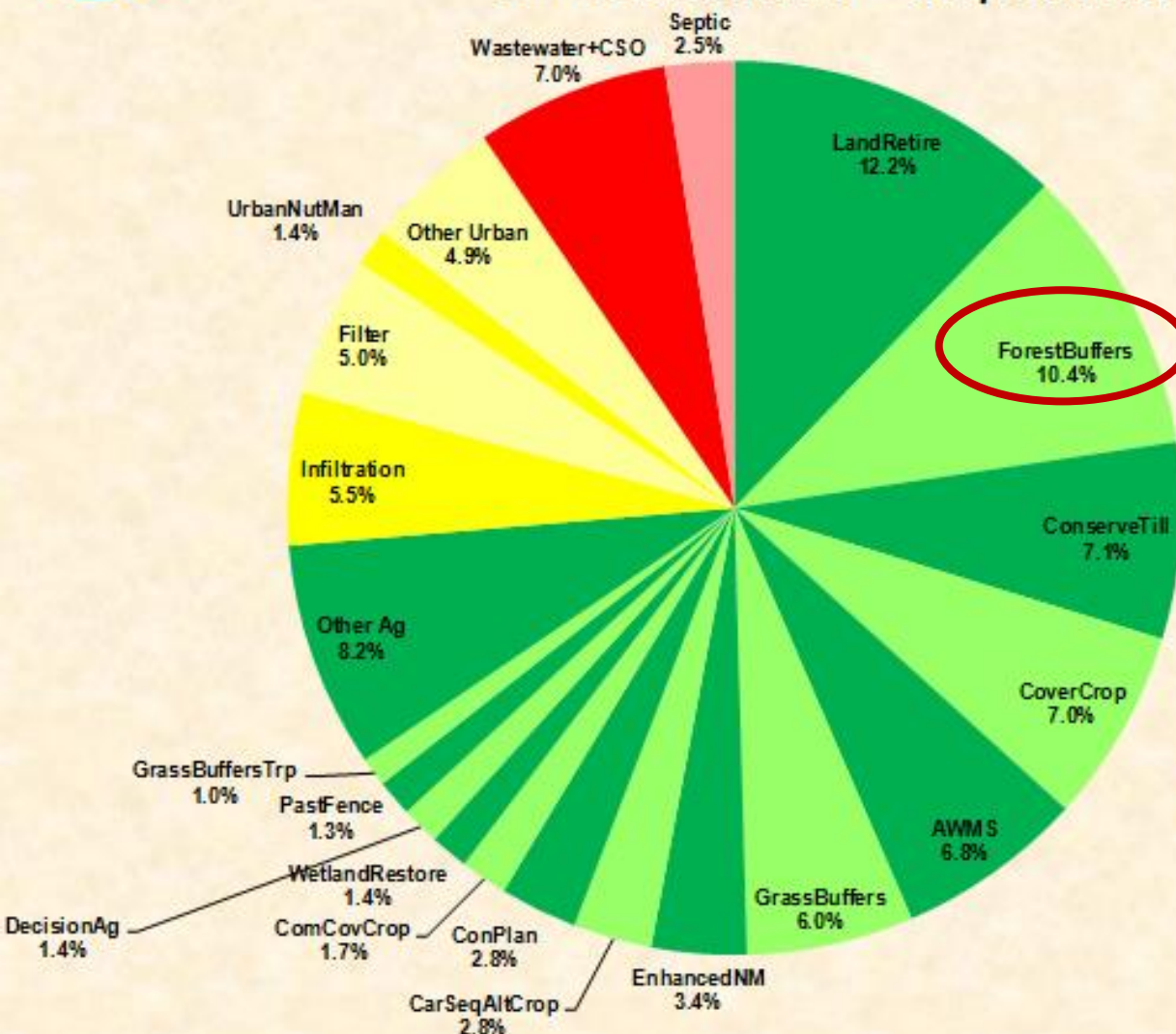
**Miles of Riparian Forest Buffers Planted in Chesapeake Bay Watershed, 1996-2012**



# States relying on past and future acres



## Nitrogen Relative Load Reductions CB Watershed – as percent



Forest Buffers rank second of all nonpoint source BMPs needed to meet TMDL targets.

- Includes both past CP-22 acres and planned 2013-2025

Each slice represents the percent of the total load reduction attributable to planned implementation levels for that BMP.

# TMDL/WIP targets for forest buffers

	<b>Total <u>New</u> <u>Acres</u> Needed 2012-2025</b>	<b>Acres/year needed</b>	<b>2012 CP-22 acres</b>
Delaware	4790	370	0
Maryland	1190	90	264
New York	6180	475	91
Pennsylvania	89,630	6895	493
Virginia	80,820	6215	683
West Virginia	3250	250	249
<b>TOTAL</b>	<b>185,860</b>	<b>14,295</b>	<b>1780</b>

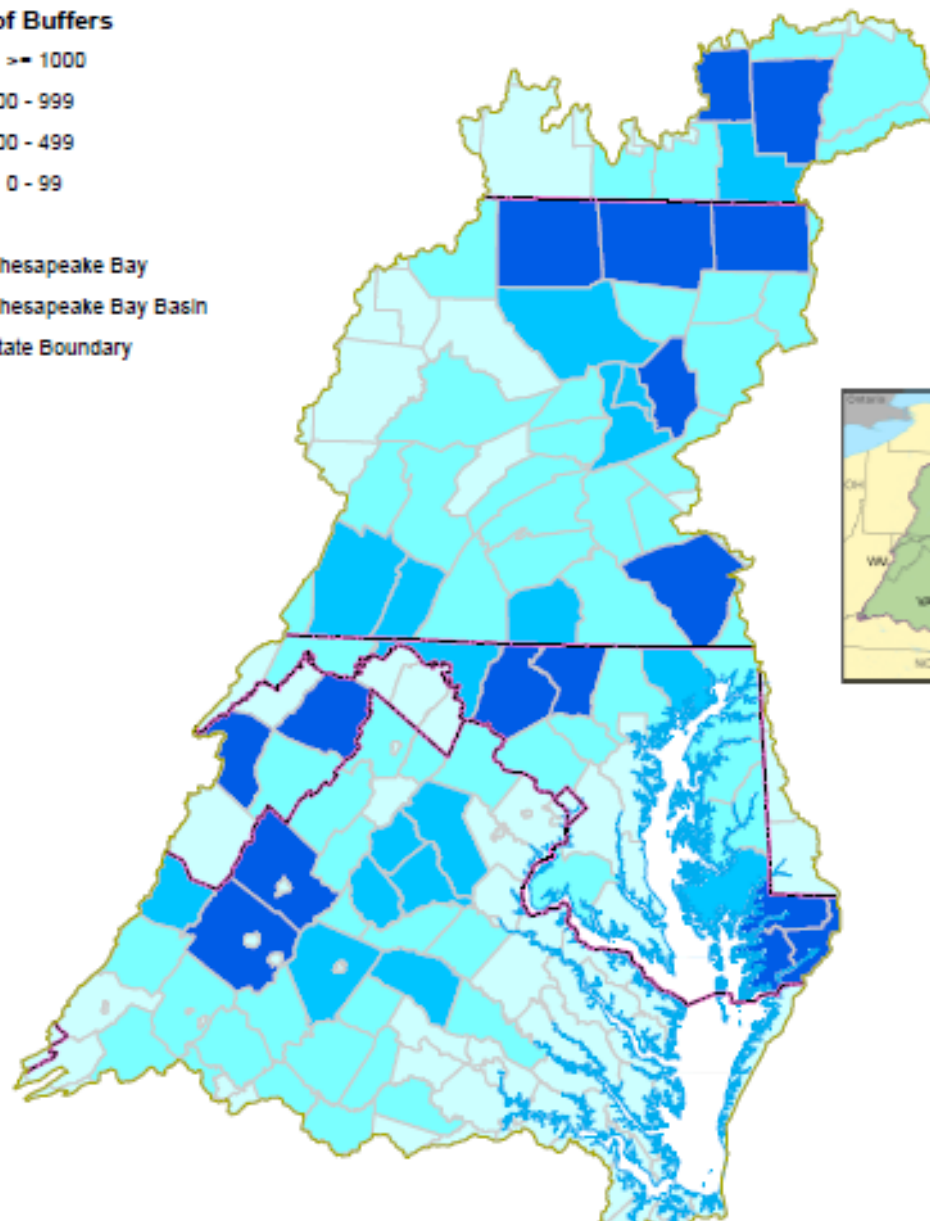
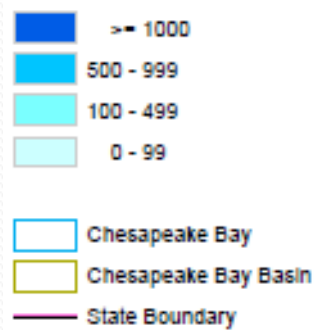
**14295 acres/year = 1191 miles/year of 100 ft wide buffers**

## Acres of Forest Buffers Restored Through CRP/CREP in the Chesapeake Bay Basin, by County (1998-2012)



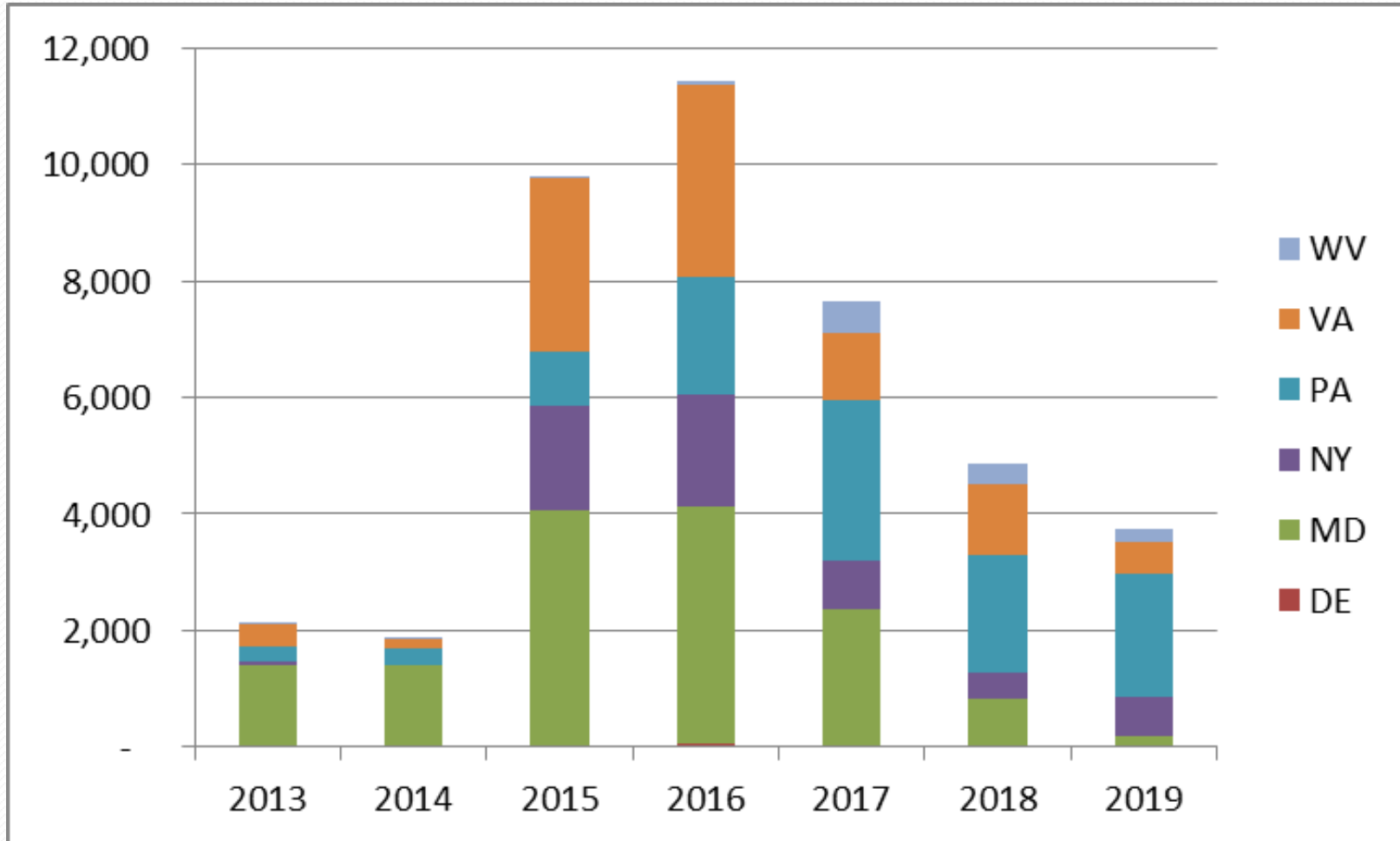
\* 25% of the counties achieved 75% of the buffer acres restored

### Acres of Buffers



# Emerging Issue: Expiring Contracts

## CP-22 Acres expiring 2013-2019



Data Source: USDA Farm Services Agency