



Healthy Watersheds

The First Quarterly Progress Meeting of the Biennial Strategy Review System | May 11, 2017

Hello!

I'm Laura Free

Indicators Coordinator

U.S. Environmental Protection Agency



I'm Catherine Krikstan

Web Content Strategist

University of Maryland Center for
Environmental Science





**Welcome to the first
Quarterly Progress Meeting
of the Biennial Strategy
Review System.**



Quarterly Progress Meetings

Healthy Watersheds

Aquatic Life

A Culture of Stewardship

Next-generation Stewards

Water Quality

Climate Change and Resiliency

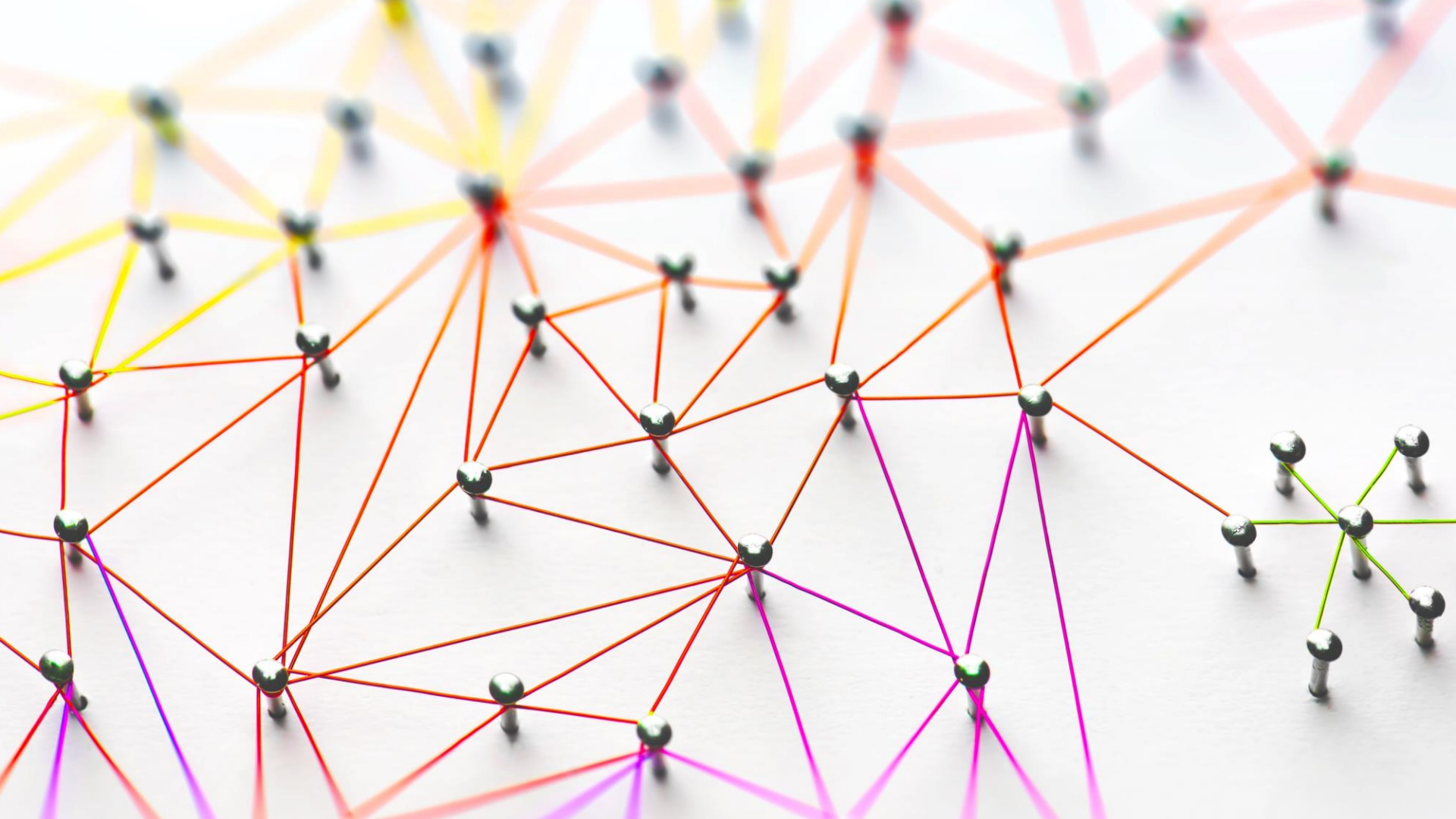
Local Action



Quarterly Progress Meetings

- Review progress
- Apply new opportunities and understandings
- Identify needed changes to approaches and actions
- Support revisions to Two-Year Work Plans







**Watershed
Agreement**
OUTCOME

```
graph TD; A[Watershed Agreement Outcome] --> B[Influencing Factor Indicator]; A --> C[Output Indicator]; A --> D[Performance Indicator];
```

The diagram is a hierarchical flowchart. At the top is a white box with a blue border containing the text 'Watershed Agreement Outcome'. A vertical line descends from this box and connects to a horizontal line. From this horizontal line, three vertical lines descend to three separate blue boxes with white borders. The first box on the left contains 'Influencing Factor Indicator', the middle box contains 'Output Indicator', and the right box contains 'Performance Indicator'. The background is dark blue, and the bottom of the image has a green gradient bar.

**INFLUENCING
FACTOR**
Indicator

OUTPUT
Indicator

PERFORMANCE
Indicator

WORK IN
PROGRESS



Healthy Watersheds

Healthy Watersheds

Stream Health

Protected Lands

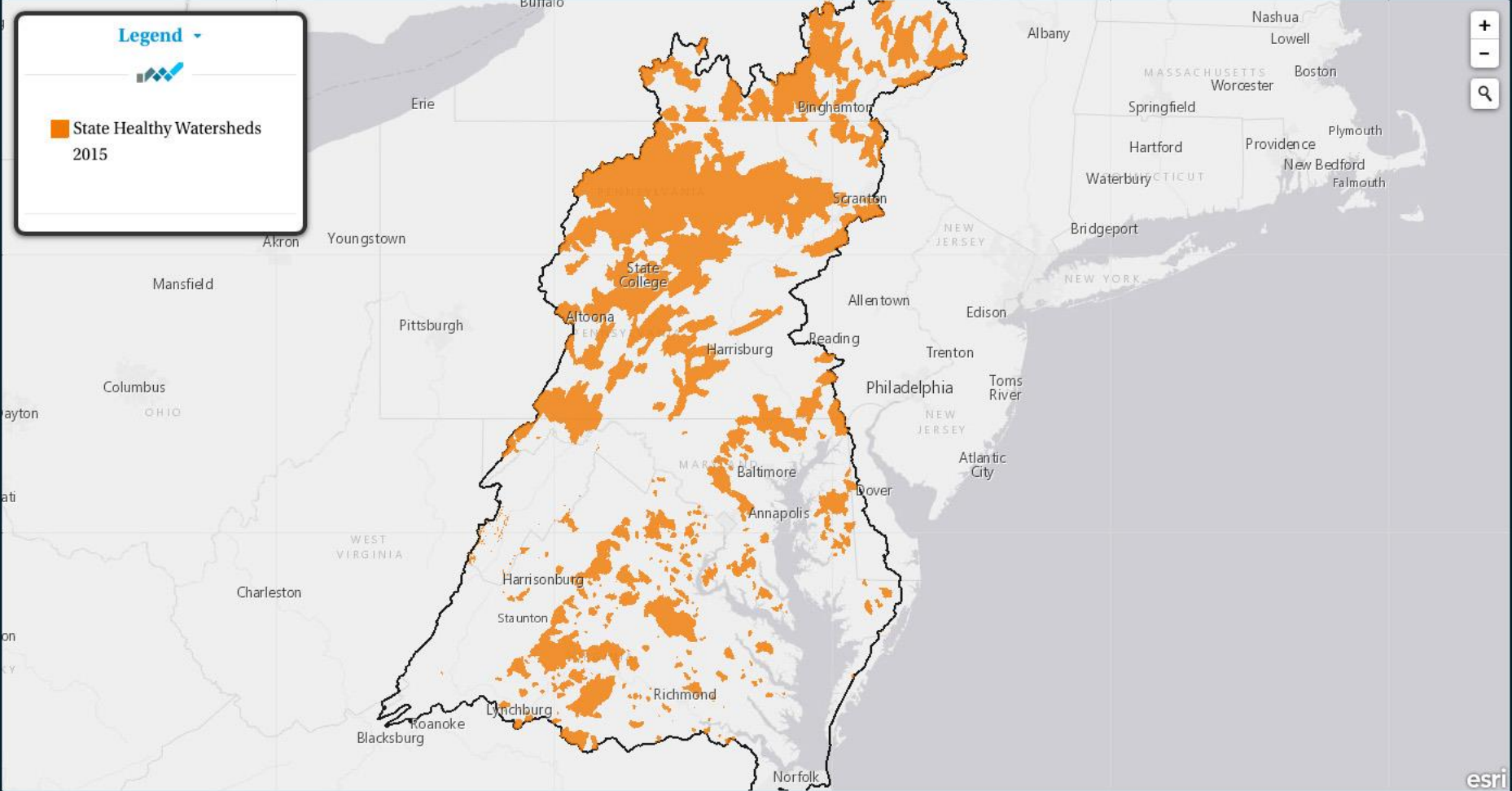
Fish Passage

Brook Trout

Fish Habitat

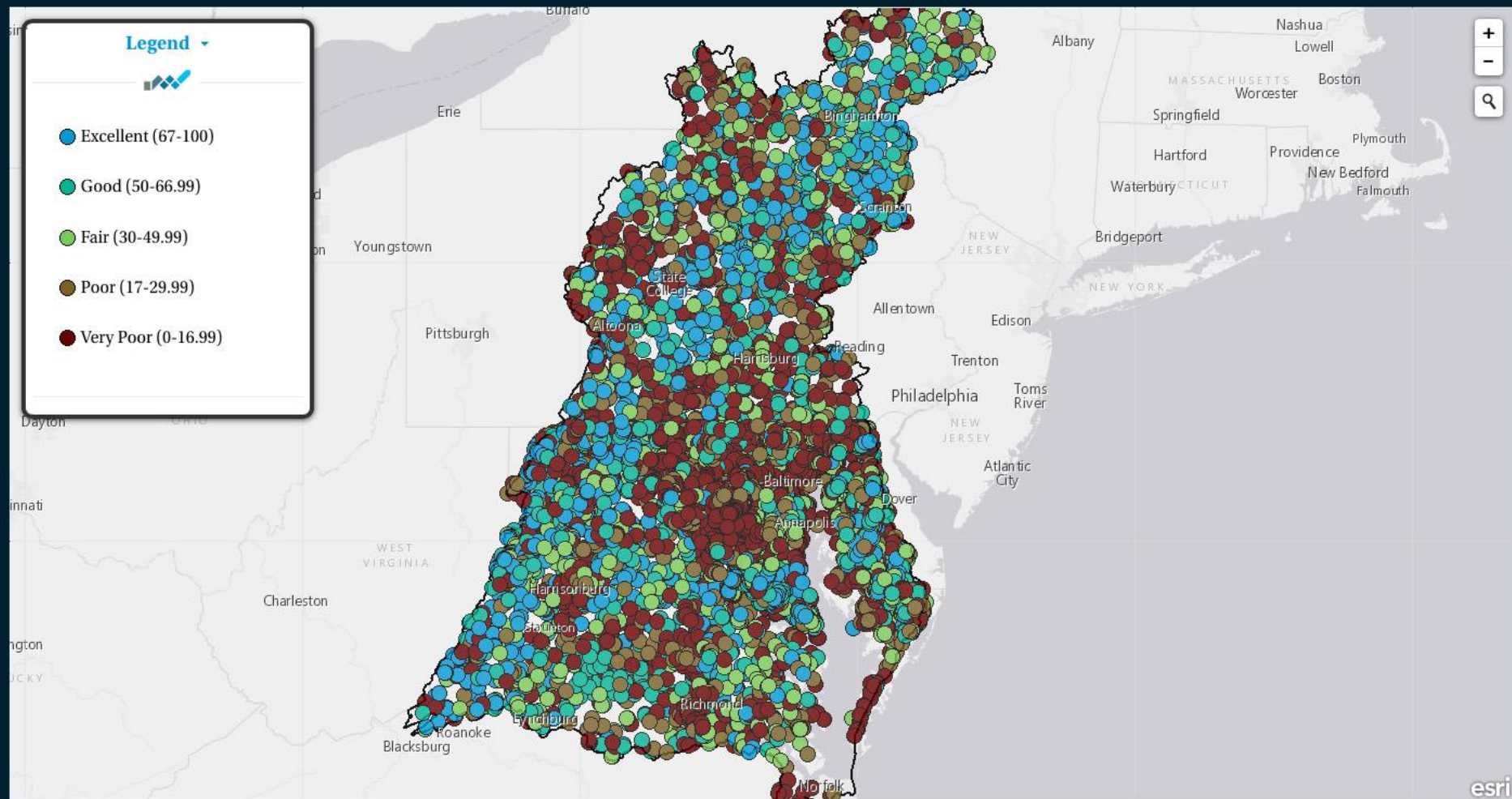


State-identified Healthy Waters and Watersheds (2015)



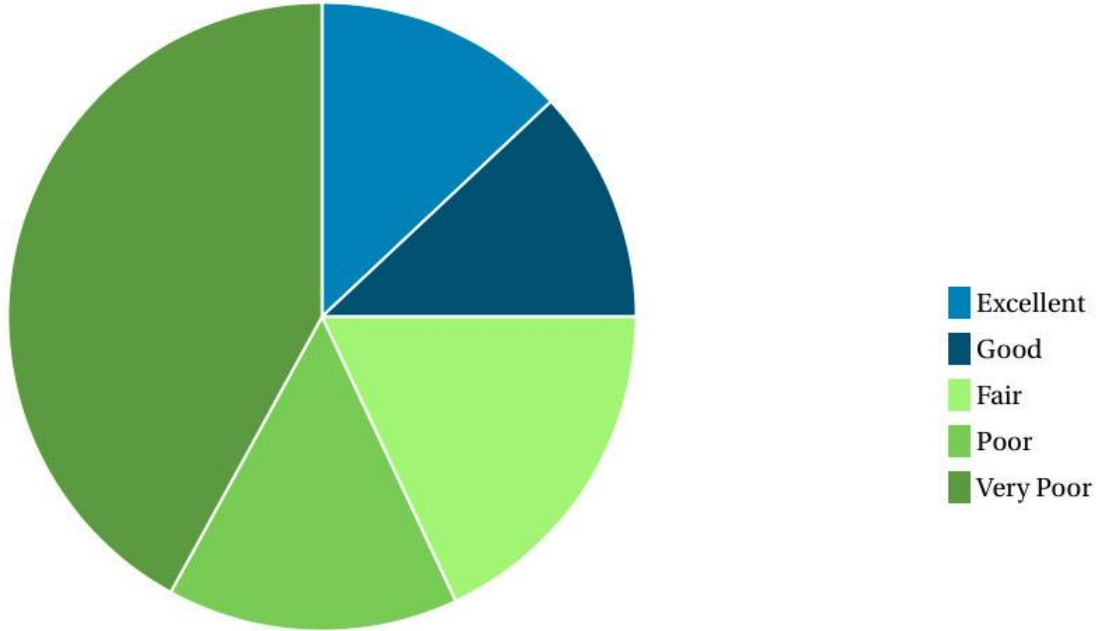


Stream Health: Average Indicator of Biotic Integrity Ratings of 10,000+ Sampling Sites (2000-2010)



Stream Health, 2000-2010

Average Indicator of Biotic Integrity Ratings of 10,000+ Sampling Sites





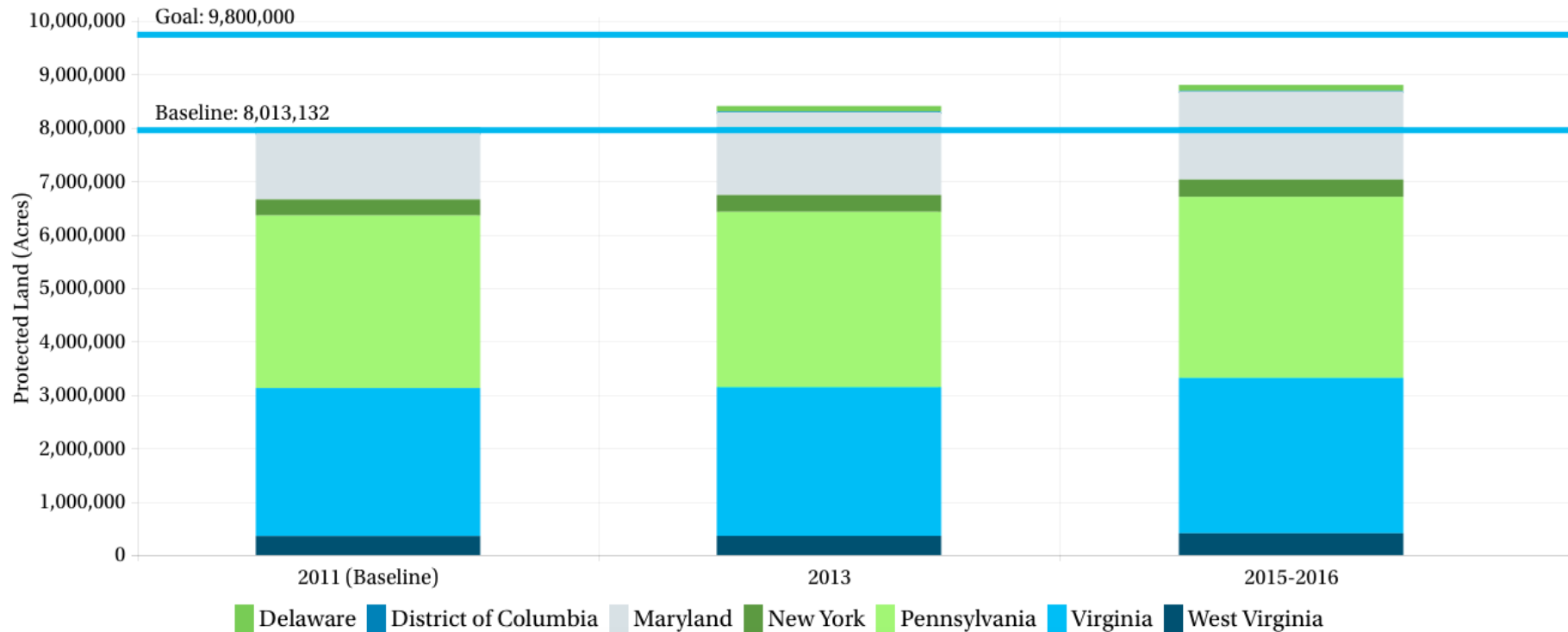
The map displays the distribution of landfills across Maryland, categorized by ownership. The legend indicates the following categories:

- Federal (Purple)
- State (Blue)
- Local (Green)
- Non-Governmental Organization (Light Green)
- Private (Brown)
- Other (Red)

Major cities and surrounding states are labeled on the map. The map also includes a transparency slider and a search icon in the top right corner.

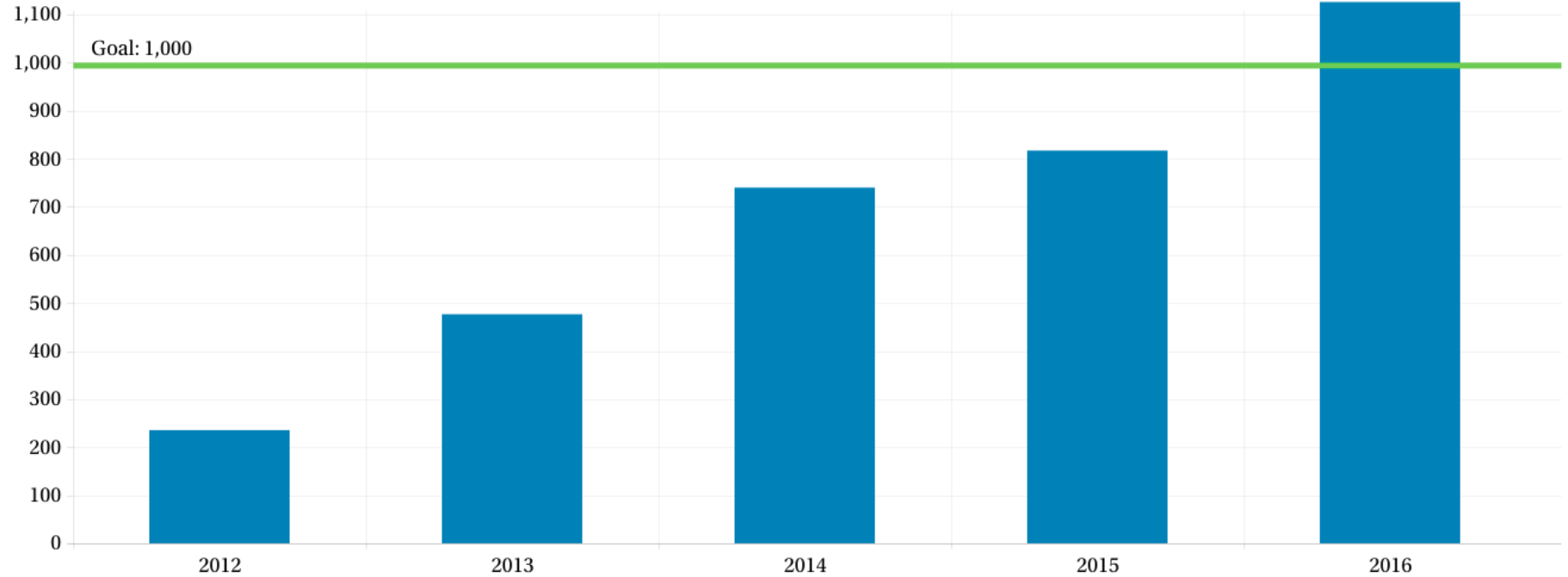
Protected Lands (By Jurisdiction), 2011-2015/2016

Some increases in acreage can be attributed to newly protected parcels of land. Other increases can be attributed to the addition of previously protected but newly digitized, corrected or refined parcels.





Stream Miles Opened to Fish Passage (Cumulative), 2012-2016









Influencing Factors

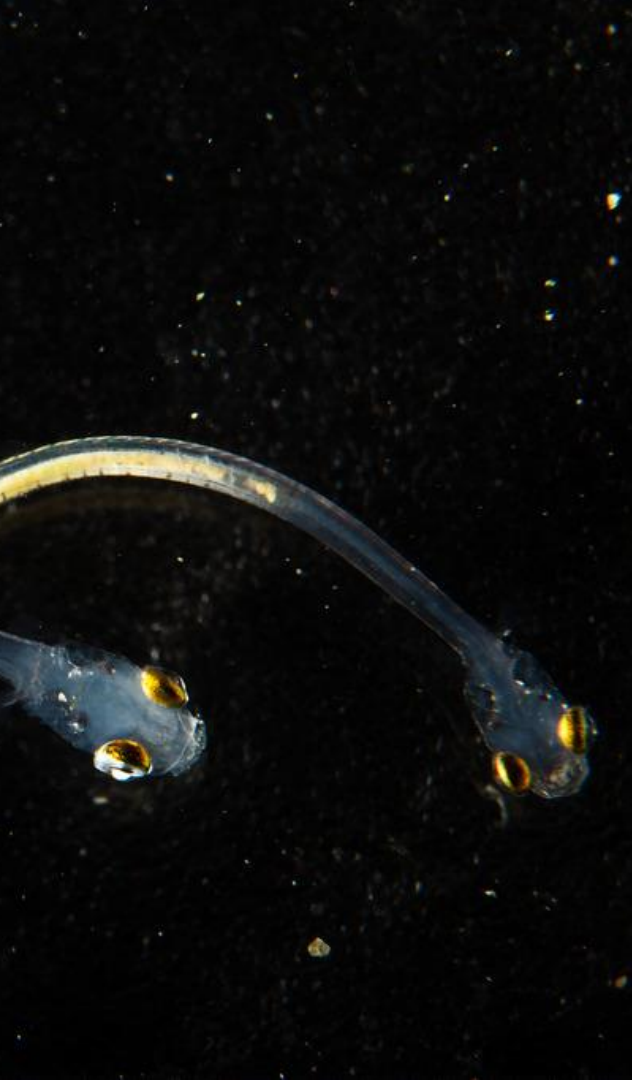
**Knowledge
Support
Capacity**





Influencing Factors

**Funding
Science and Research
Partner Coordination**





Influencing Factors

Population Growth
Invasive Species
Habitat Quality
Water Quality
Climate Change





Thanks!

Find us at

free.laura@epa.gov

ckrikstan@chesapeakebay.net

Presentation template by SlidesCarnival. Photos by Chesapeake Bay Program and Shutterstock.