

Protected Lands Outcome

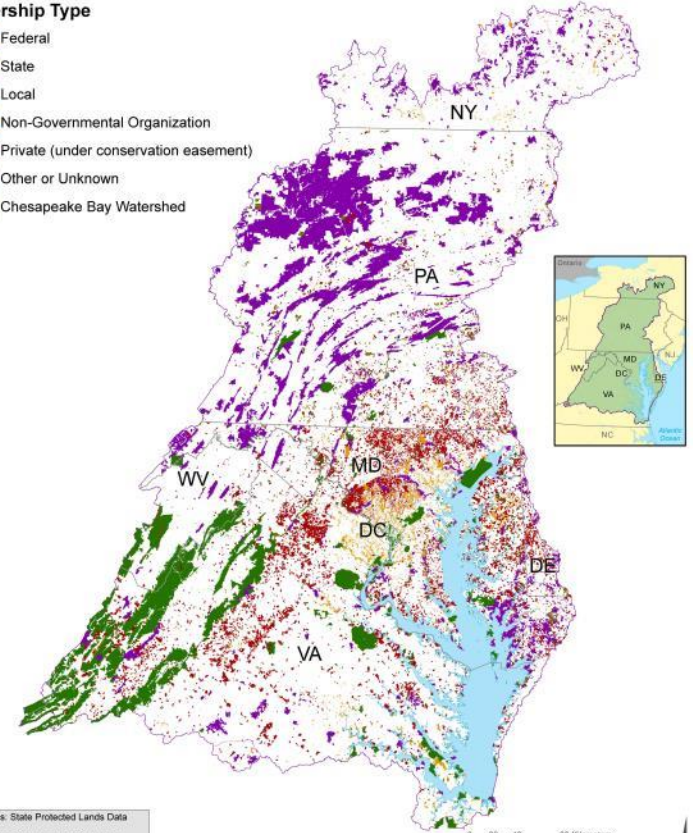
John Griffin
Chesapeake Conservation
Partnership

Protected Lands in the Chesapeake Bay Watershed 2015 - 2016



Ownership Type

- Federal
- State
- Local
- Non-Governmental Organization
- Private (under conservation easement)
- Other or Unknown
- Chesapeake Bay Watershed



Data Sources: State Protected Lands Data
Stewards,
Protected Areas Database V. 1.3, National
Conservation Easement Database V. June
2014.

Created by RLT, 2/6/16

UTM Zone 18N, NAD 83

Through the Chesapeake Bay Watershed Agreement, the Chesapeake Bay Program has committed to...

GOAL: Conserve landscapes treasured by citizens in order to maintain water quality and habitat; sustain working forests, farms and maritime communities; and conserve lands of cultural, indigenous and community value.

Through the Chesapeake Bay Watershed Agreement, the Chesapeake Bay Program has committed to...

By 2025, protect an additional two million acres of lands throughout the watershed—currently identified as high-conservation priorities at the federal, state or local level—including 225,000 acres of wetlands and 695,000 acres of forest land of highest value for maintaining water quality.



What We Want

Create strong incentives for:

- State of the art BMPs on permanently protected land
- Permanent protection of larger landscapes that preclude conversion and future loads
- Long-term conservation policies

1

Setting the Stage:

What are our assumptions?





**Based on what we've
learned, we plan to...**

- Revising work plan, management strategy and completing logic table by August
- But, the bigger lift is ...
- Creating support for long-term conservation and new funding streams

2

Progress:

Are we doing what we said we would do?

Yes



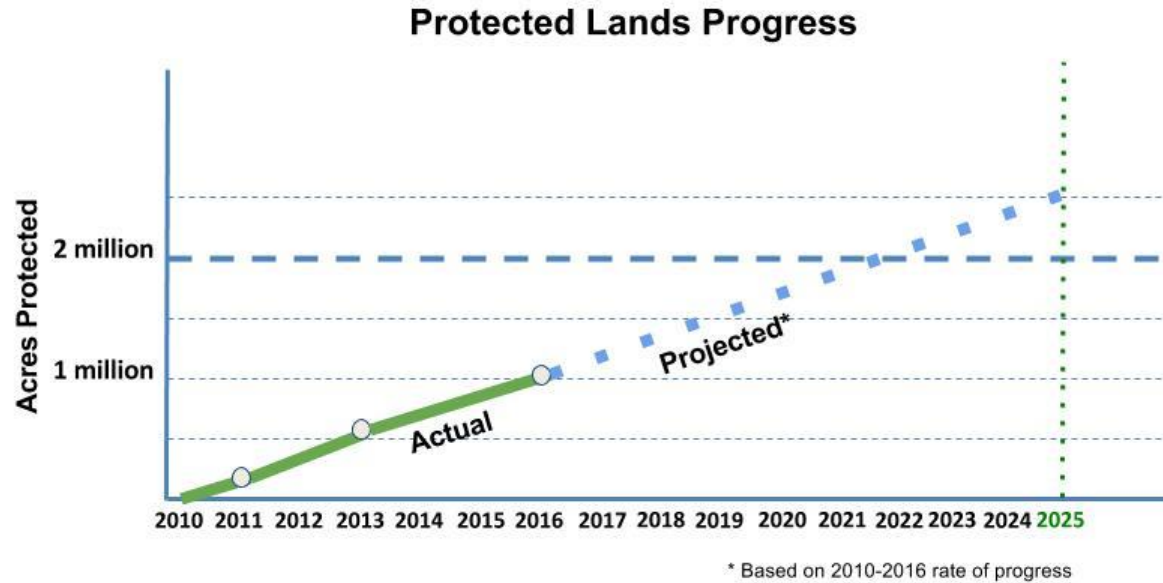
An aerial photograph of a vast, green wetland landscape. A winding river flows through the center, with a small boat visible on its banks. The surrounding area is covered in dense, vibrant green vegetation, interspersed with small, dark blue ponds. The text "8.8 million acres and counting" is overlaid in the center in a large, white, sans-serif font.

**8.8 million acres
and counting**

Progress

	2010	2011	2013	2015-16
Total Acres Protected Lands	7,800,000	8,013,132	8,409,076	8,804,577
Acres toward Goal	--	213,132	609,076	1,004,577
Percent of Goal Achieved	--	10.7%	30.5%	50.2%

Are we on track?





Analysis

Which actions are most critical to progress?

- Sustained land protection funding
- Development of new financing mechanisms
- Building capacity of land trusts
- Marrying strategic planning, use of mapping & data with organizational capacity
- Public support

3

Challenges:

Are our actions having the expected effect?

Yes



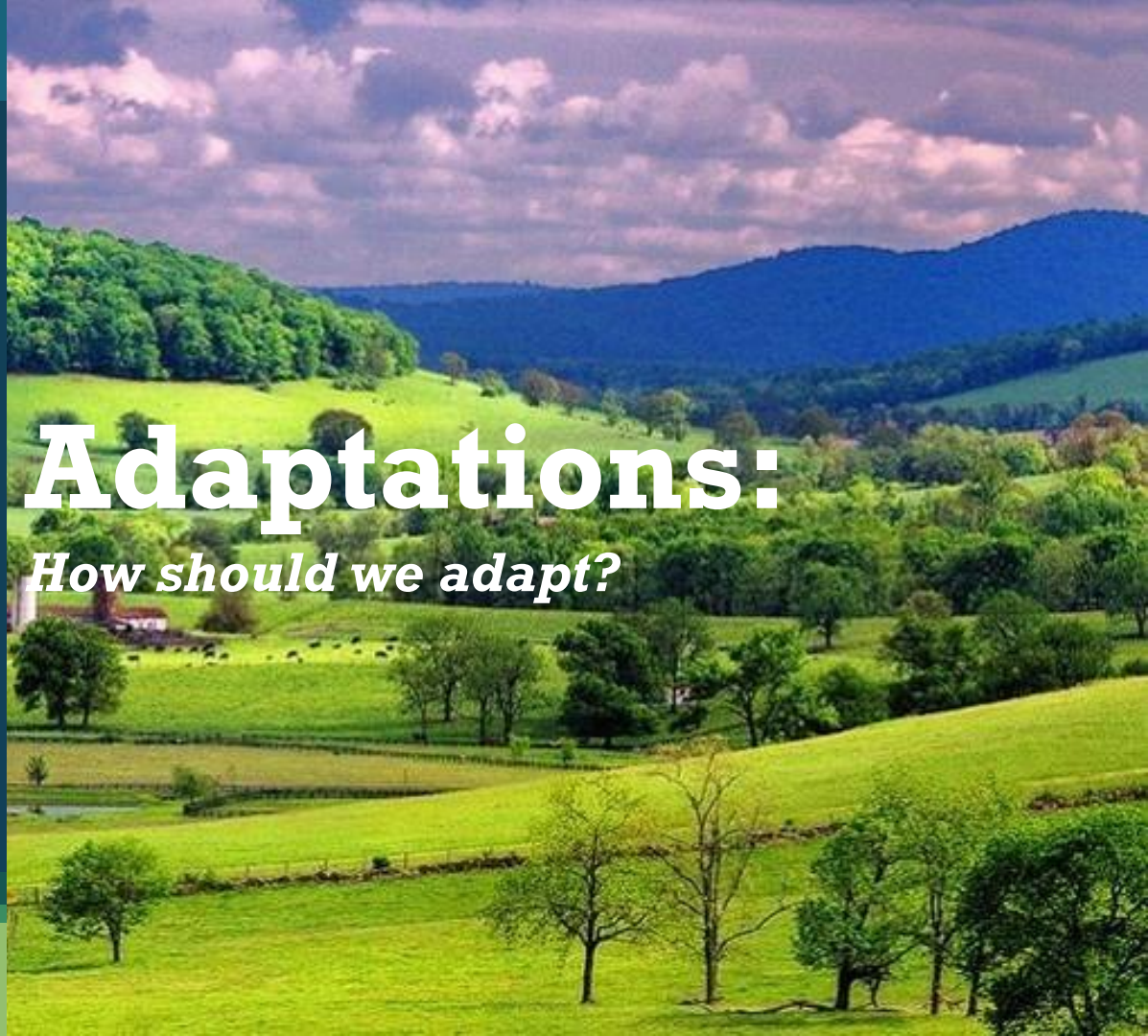
Challenges

- Changing federal funding climate for land protection
- Impact on state and local revenues from changing federal funding
- Support for funding land protection varies based on economy and understanding of long-term goals

4

Adaptations:

How should we adapt?



Adaptations Include

- 1 Set Long-term Goals (BHAG)**
- 2 Document & Illustrate Them**
- 3 'Grow the Pie' Strategies**
- 4 Track Progress**

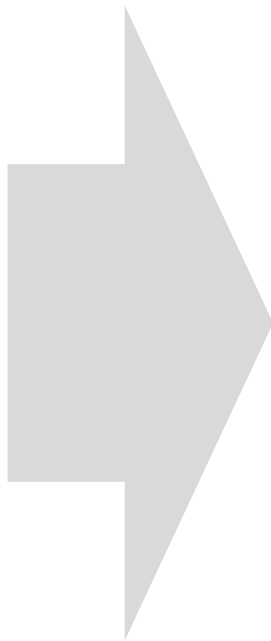
Farms

Forests

Habitat

Heritage

Health



All interconnected:

Clean water

Vibrant economy

Strong communities

Healthy people

Working farms/forests

Thriving native wildlife

Healthy watersheds

Shared heritage

Recreation

Quality of life



**No better, more
reliable platform
for achieving many
co-benefits**

Agreement Goals and Outcomes



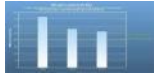
Sustainable Fisheries

- Blue Crab Abundance
- Blue Crab Management
- Oyster
- Forage Fish
- Fish Habitat



Vital Habitats Goal

- Wetlands
- Black Duck
- Stream Health
- Brook Trout
- Fish Passage
- Submerged Aquatic Vegetation (SAV)
- Forest Buffer
- Tree Canopy



Water Quality Goal

- 2017 Watershed Implementation Plans (WIP)
- 2025 WIP
- Water Quality Standards Attainment and Monitoring



Toxic Contaminants Goal

- Toxic Contaminants Research
- Toxic Contaminants Policy and Prevention



Healthy Watersheds Goal

- Healthy Waters



Stewardship Goal

- Citizen Stewardship
- Local Leadership
- Diversity



Land Conservation Goal

- Protected Lands
- Land Use Methods and Metrics Development
- Land Use Options Evaluation



Public Access Goal

- Public Access Site Development



Environmental Literacy Goal

- Student
- Sustainable Schools
- Environmental Literacy Planning



Climate Resiliency Goal

- Monitoring and Assessment
- Adaptation Outcome

- **Durability**
- **Additionality**
- **Co-Benefits**

Least

Most

1 Acre

1 Acre

1 Acre

1 Acre

**Unprotected
No BMPs**

**Unprotected
with BMPs**

**Protected
No BMPs**

**Protected
with BMPs**



What We Want

Create strong incentives for:

- State of the art BMPs on permanently protected land
- Permanent protection of larger landscapes that preclude conversion and future loads
- Long-term conservation policies

Discussion

