

Cross-Outcome Mapping and Climate Resiliency

Scott Phillips, John Wolf, Chris Wright, and others

Climate Resiliency Workgroup

March 20, 2017

Approach



- Maximum benefit to living resources
- Restoration and conservation
- Consider future threats
- Current partner efforts
- Joint planning in places with greatest benefit

Initial GIT priorities

- Living Resources:
 - Fish,
 - Wildlife
 - People
- Habitats
- Water Quality
- Healthy Watersheds and Land Protection
- Threats



Process and Next Steps

Process to Date:

- Conservation and Restoration Maps
- Management questions
- Picked Potential Places

Next Steps:

- Input from jurisdictions, federal partners, NGOs
 - Match their priorities
 - Future Threats
 - Capacity: Existing or potential enhancements
 - Use as part of SRS

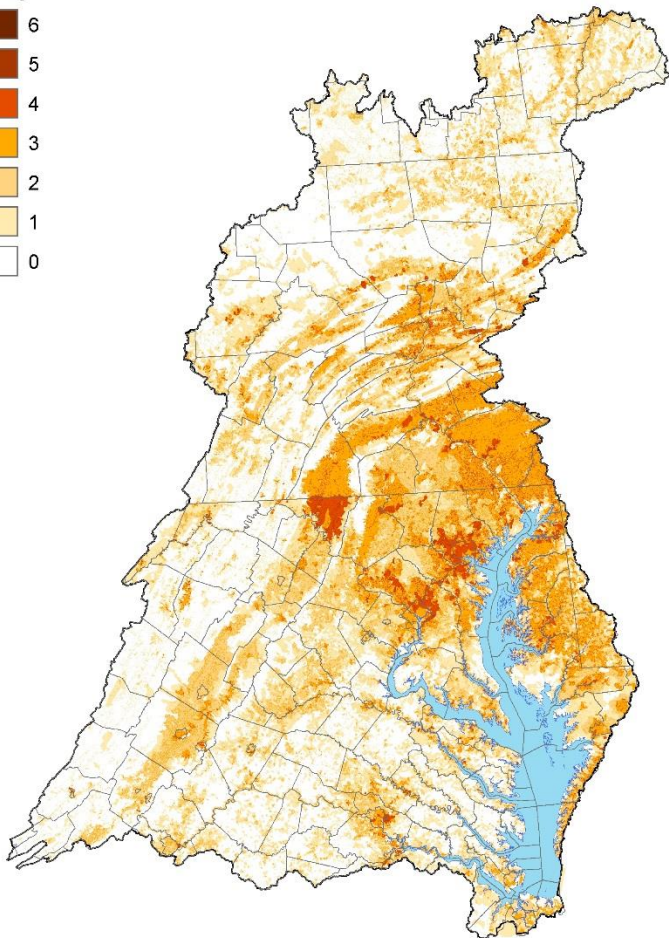
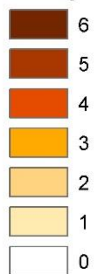
Restoration Areas

Data Included:

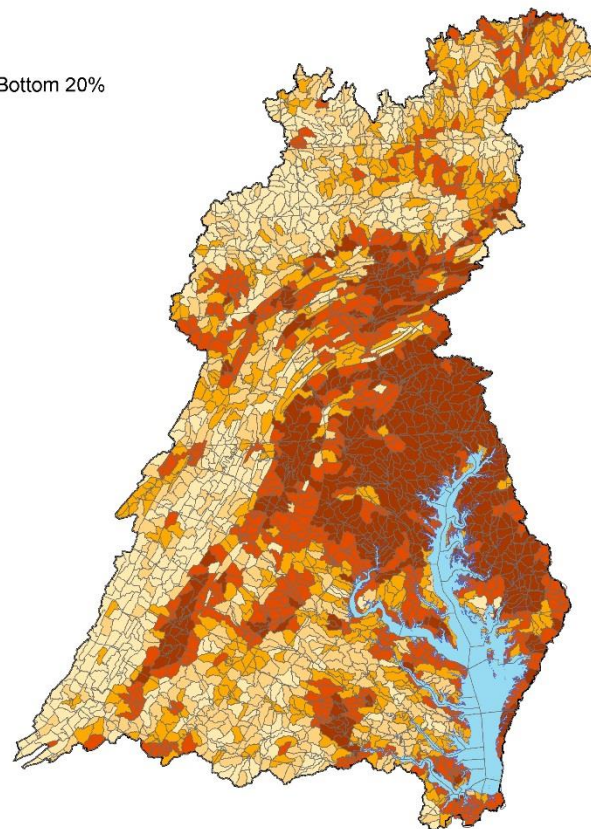
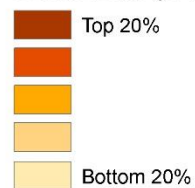
- Designated Use in Chesapeake Bay – Non-Attaining Segments
- All Toxic contaminant Impairments
- SPARROW Nutrient Yields – Top 25% N Delivered to Bay
- SPARROW Nutrient Yields – Top 25% P Delivered to Bay
- Priority Oyster Restoration Areas
- National Fish Habitat Assessment – Areas at High Risk of Habitat Degradation
- Index of Ecological Integrity – Low Scores

Restoration Areas

Composite Restoration Score

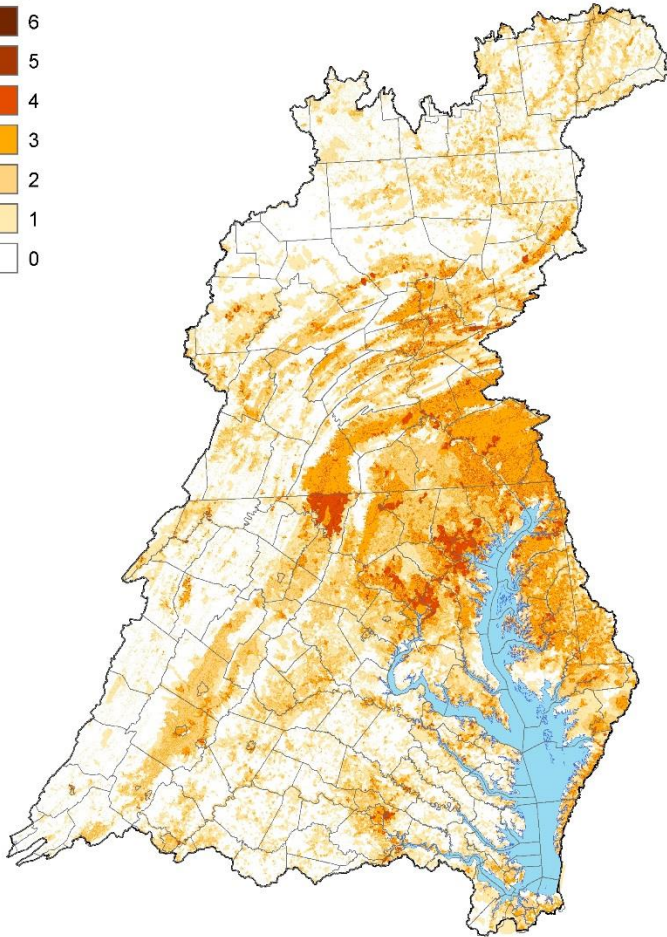
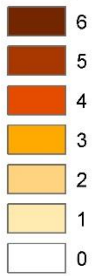


Watershed (HUC12) Composite Restoration Score

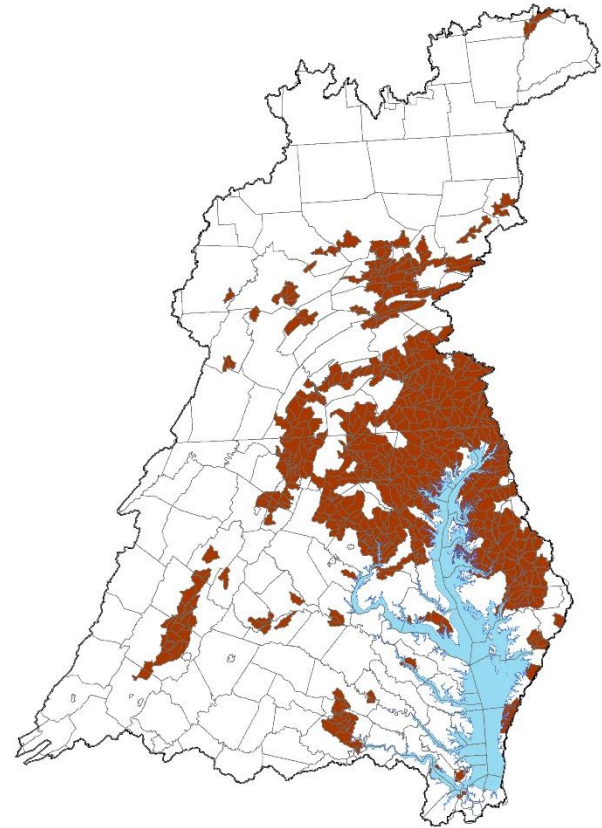


Restoration Areas

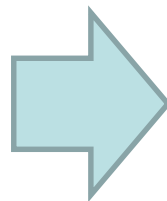
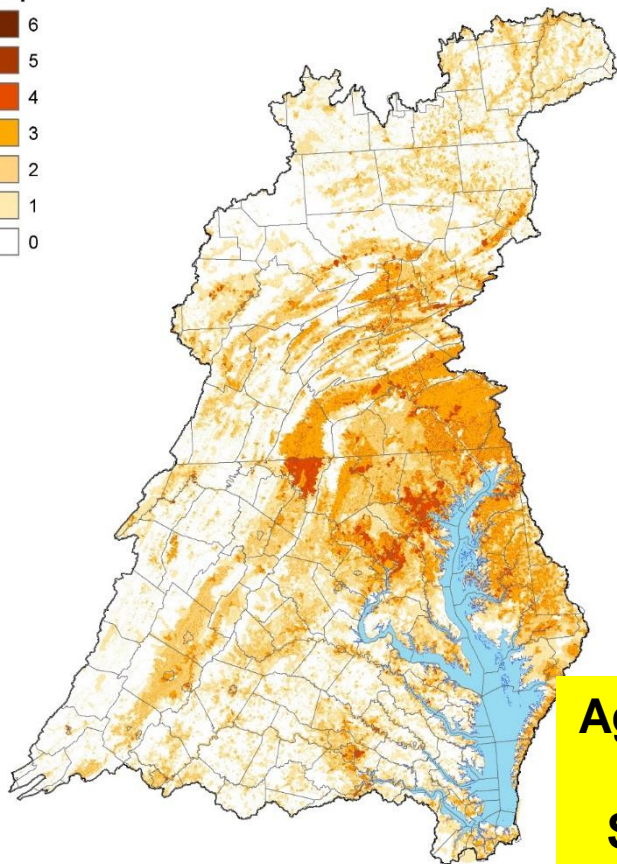
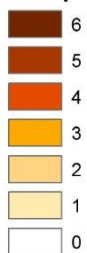
Composite Restoration Score



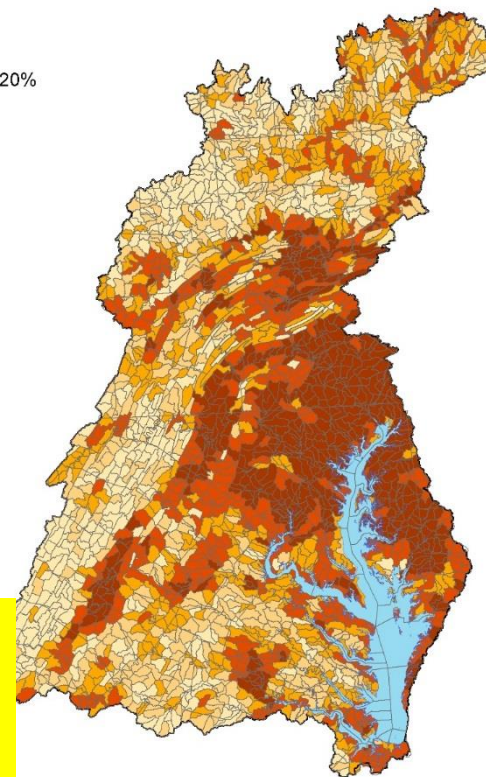
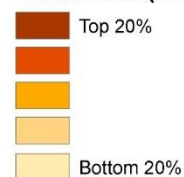
Watershed (HUC12) Composite Restoration Score - Top 20%



Composite Restoration Score

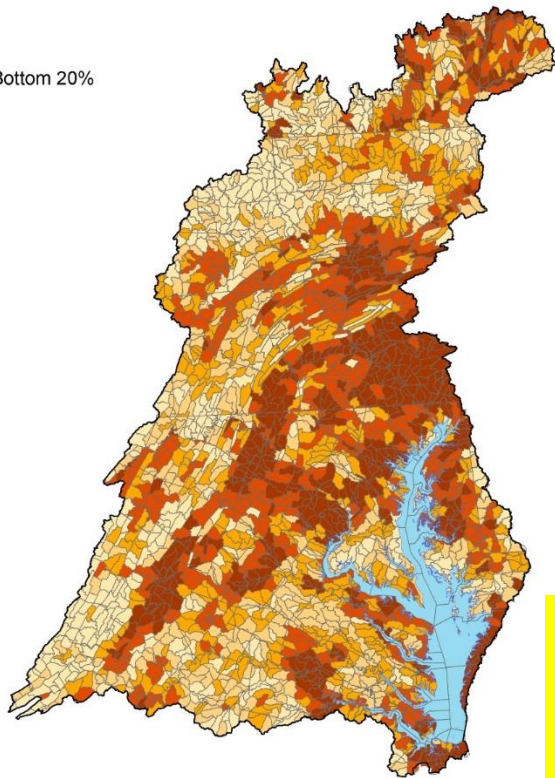
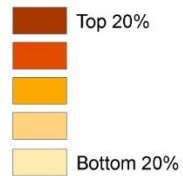


Watershed (HUC12) Composite Restoration Score



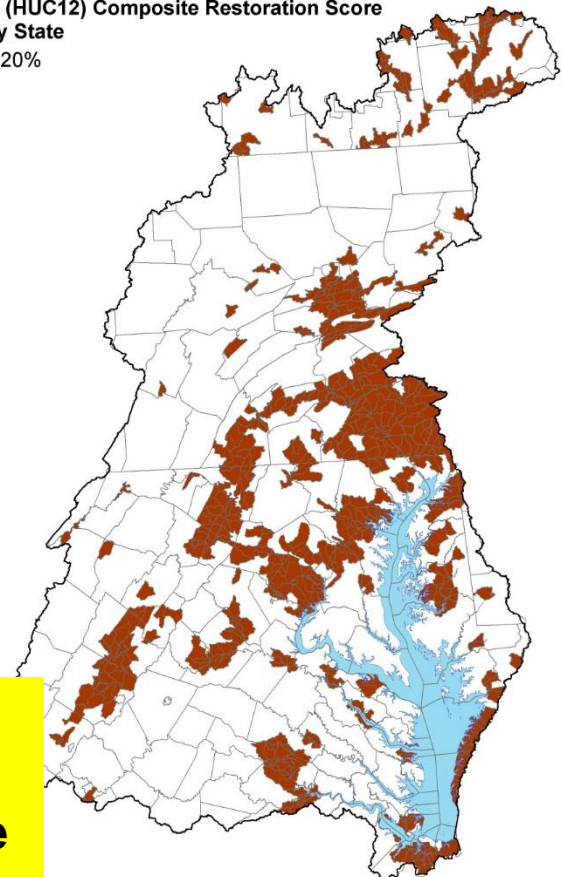
**Aggregating Composite
Restoration
Score to HUC 12 on a
State-by-State basis**

Watershed (HUC12) Composite Restoration Score



Watershed (HUC12) Composite Restoration Score
Top 20% by State

Top 20%



**Selecting top 20% of
HUC 12 Watersheds
based on State-by-State
Restoration Score**

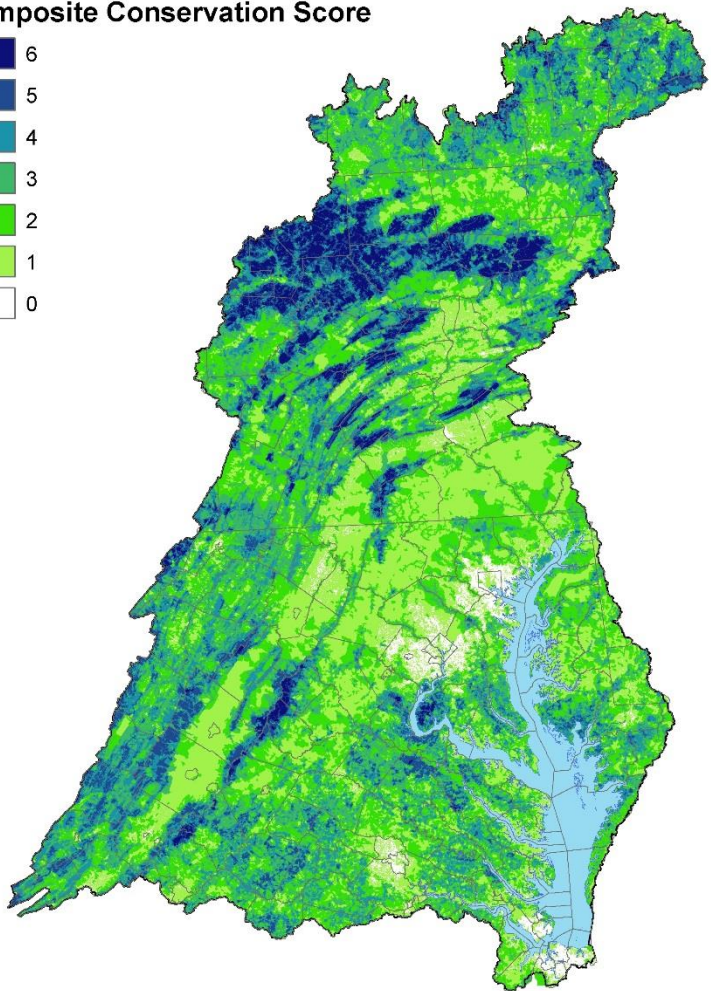
Conservation Areas

Data Included

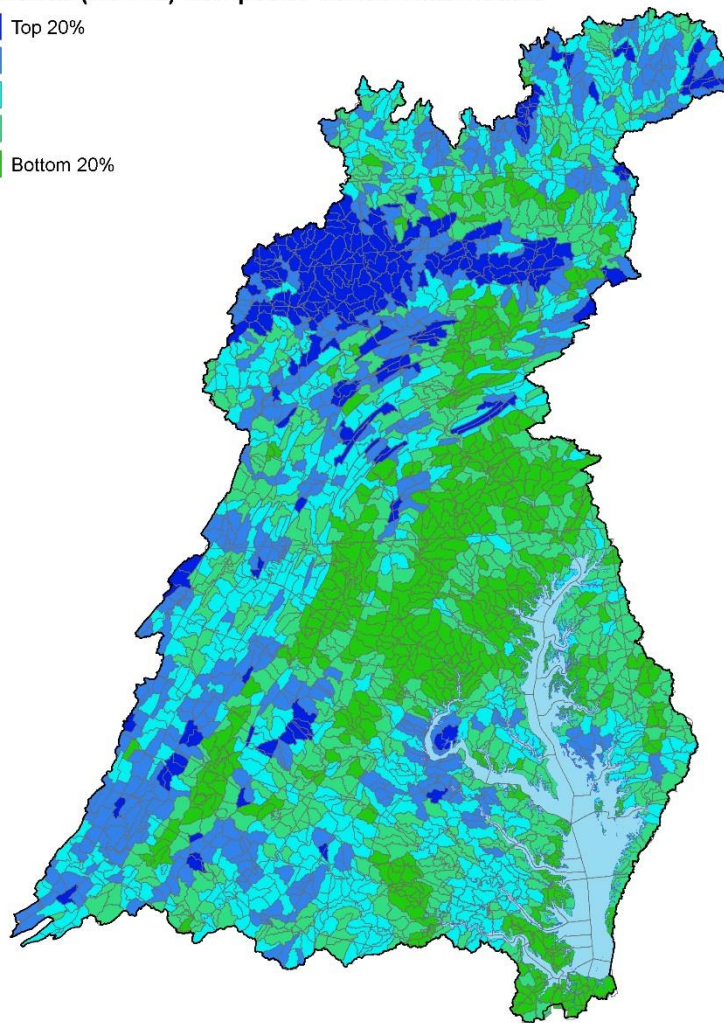
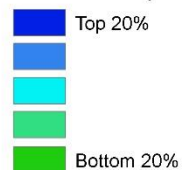
- Priority Living Resource Areas – Water Column
- Priority Living Resource Areas – Bottom Habitat
- Potential Oyster Habitat
- National Fish Habitat Assessment – Areas at High Risk of Habitat Degradation
- Regional Conservation Opportunity Areas – Cores and Connectors
- Brook Trout Priority Subwatersheds
- Index of Ecological Integrity – High Scores
- American Black Duck Habitat
- Designated Use Attainment
- State Identified Healthy Waters and Watersheds

Conservation Areas

Composite Conservation Score

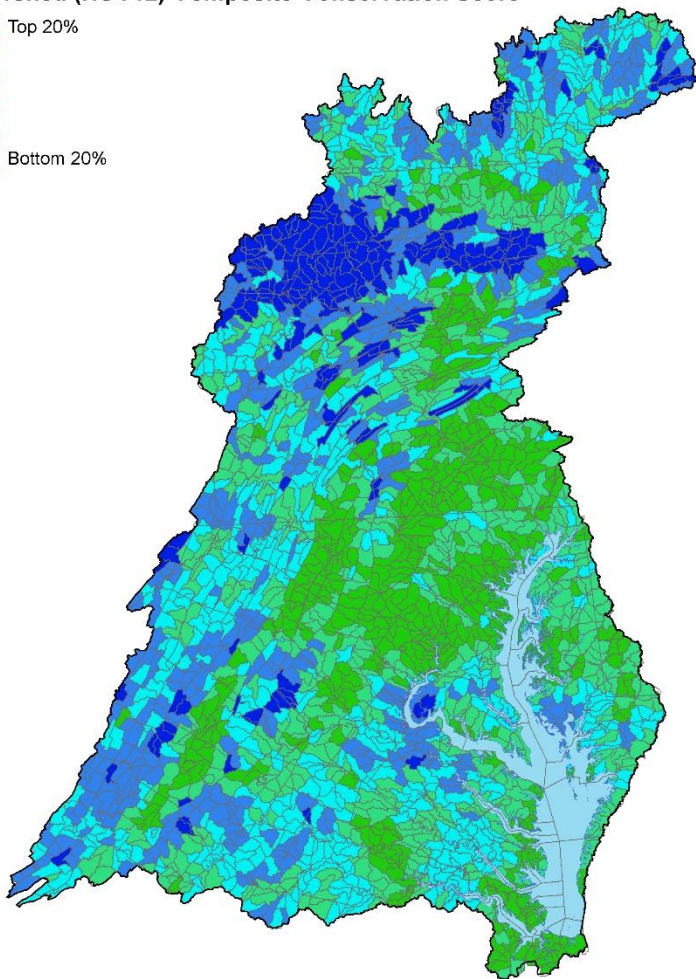
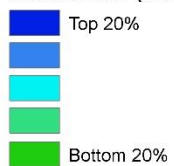


Watershed (HUC12) Composite Conservation Score

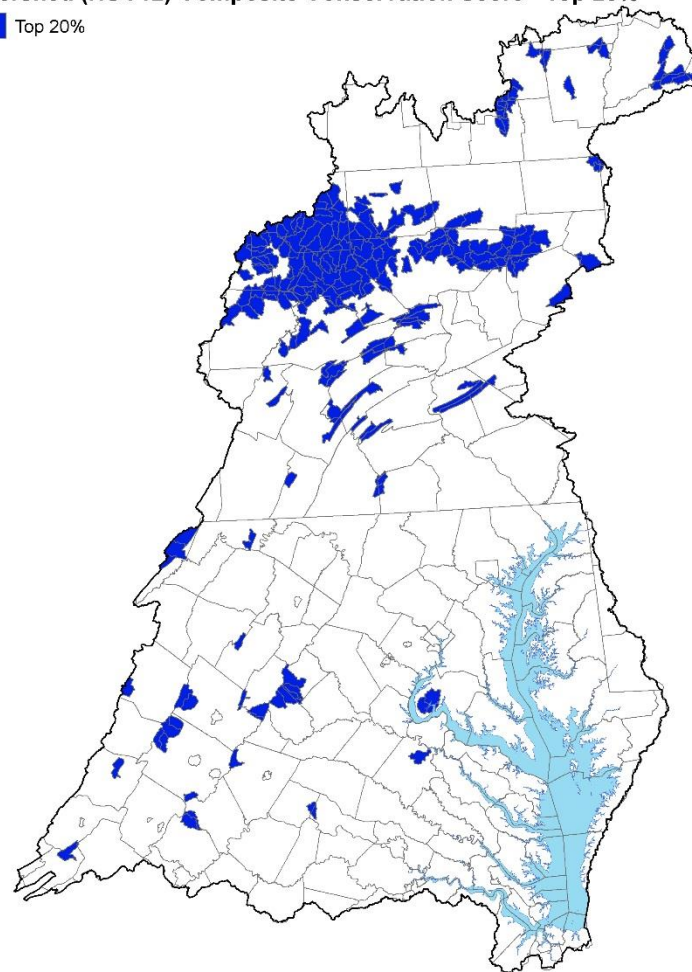


Conservation Areas

Watershed (HUC12) Composite Conservation Score

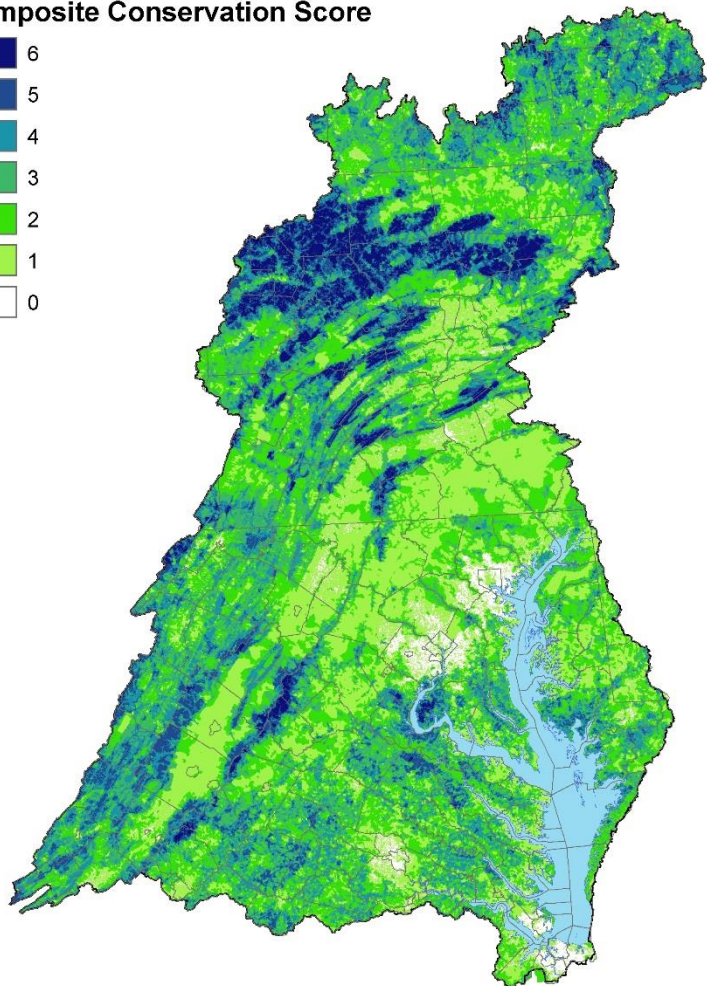


Watershed (HUC12) Composite Conservation Score - Top 20%

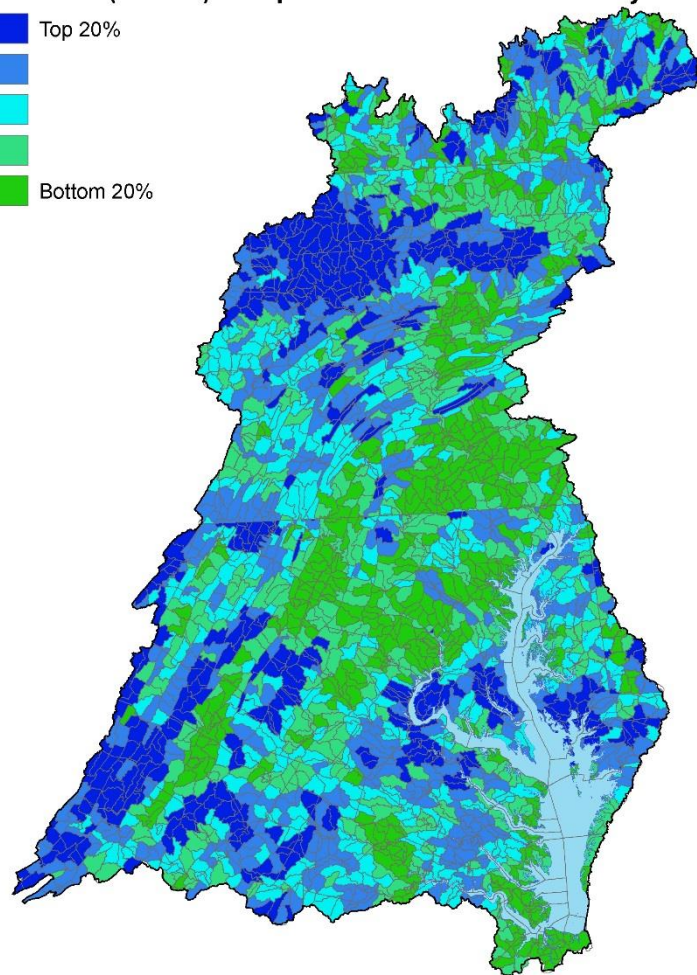
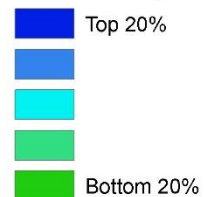


Conservation Areas

Composite Conservation Score

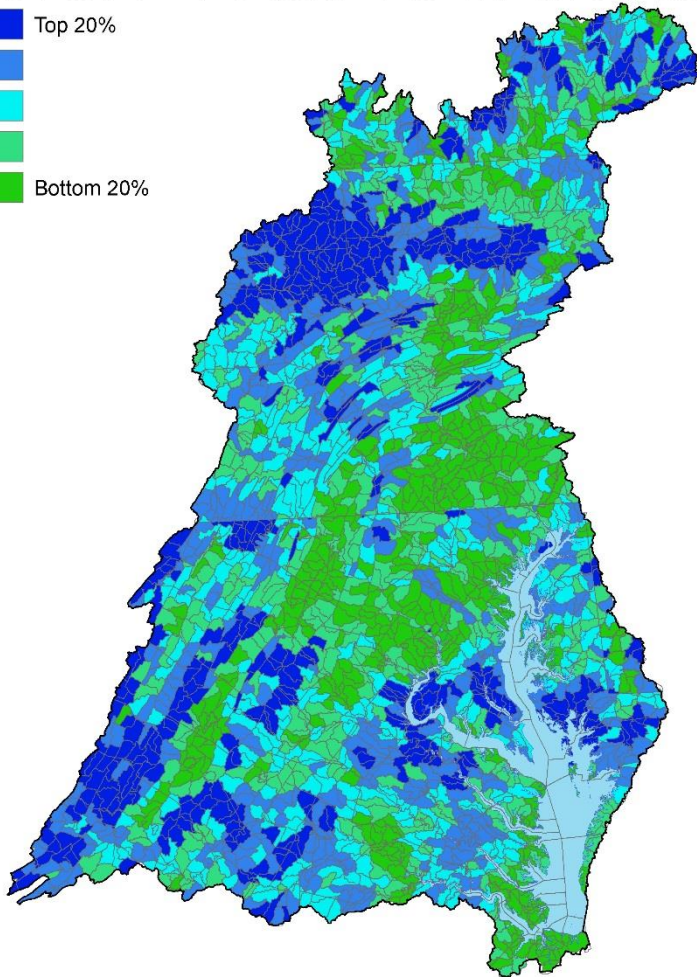
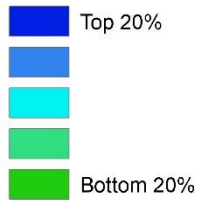


Watershed (HUC12) Composite Conservation Score by State

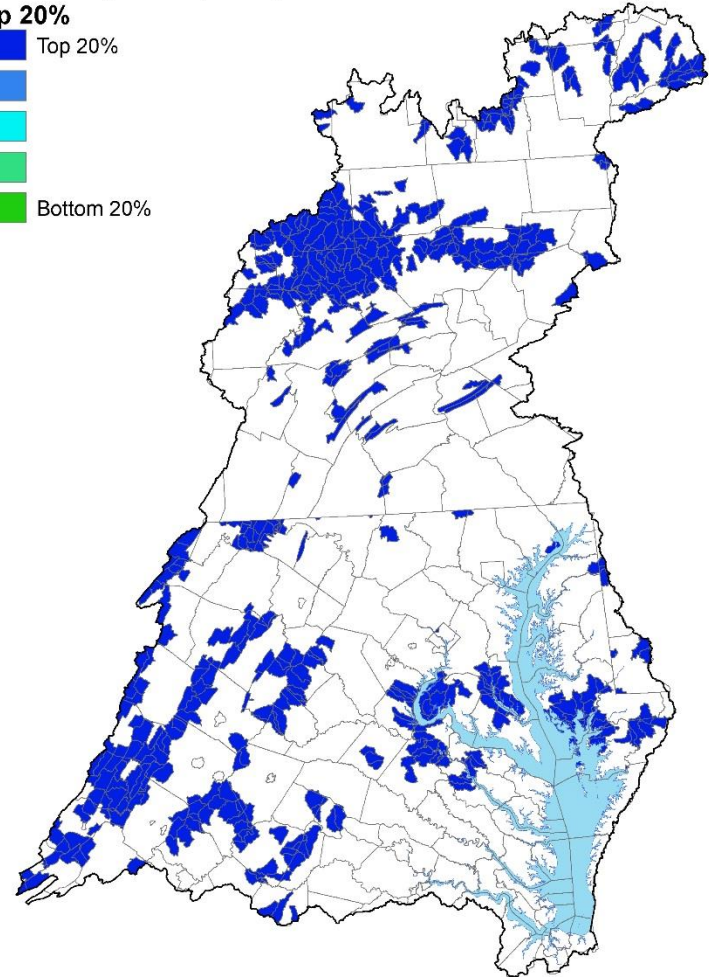
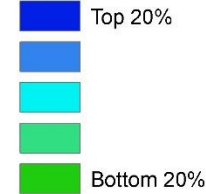


Conservation Areas

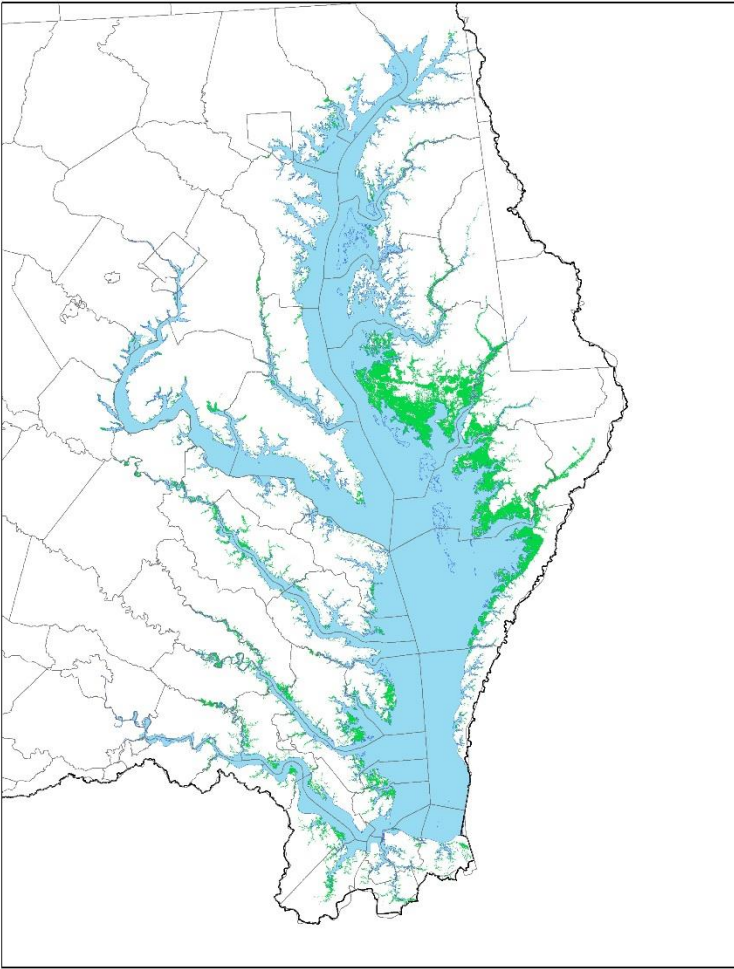
Watershed (HUC12) Composite Conservation Score by State



Watershed (HUC12) Composite Conservation Score by State
Top 20%



Climate Layers



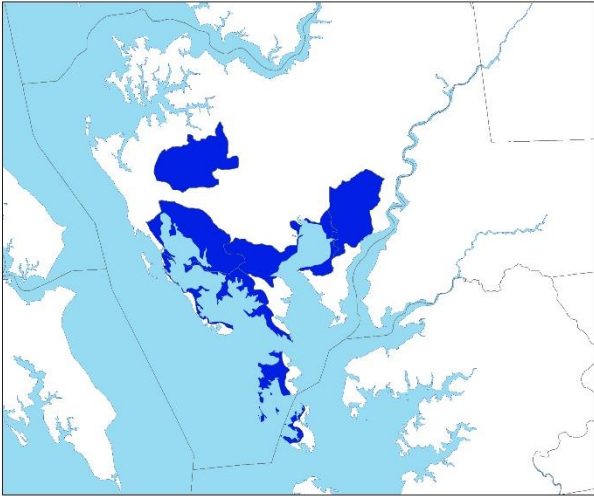
3 ft Sea Level Rise Scenario



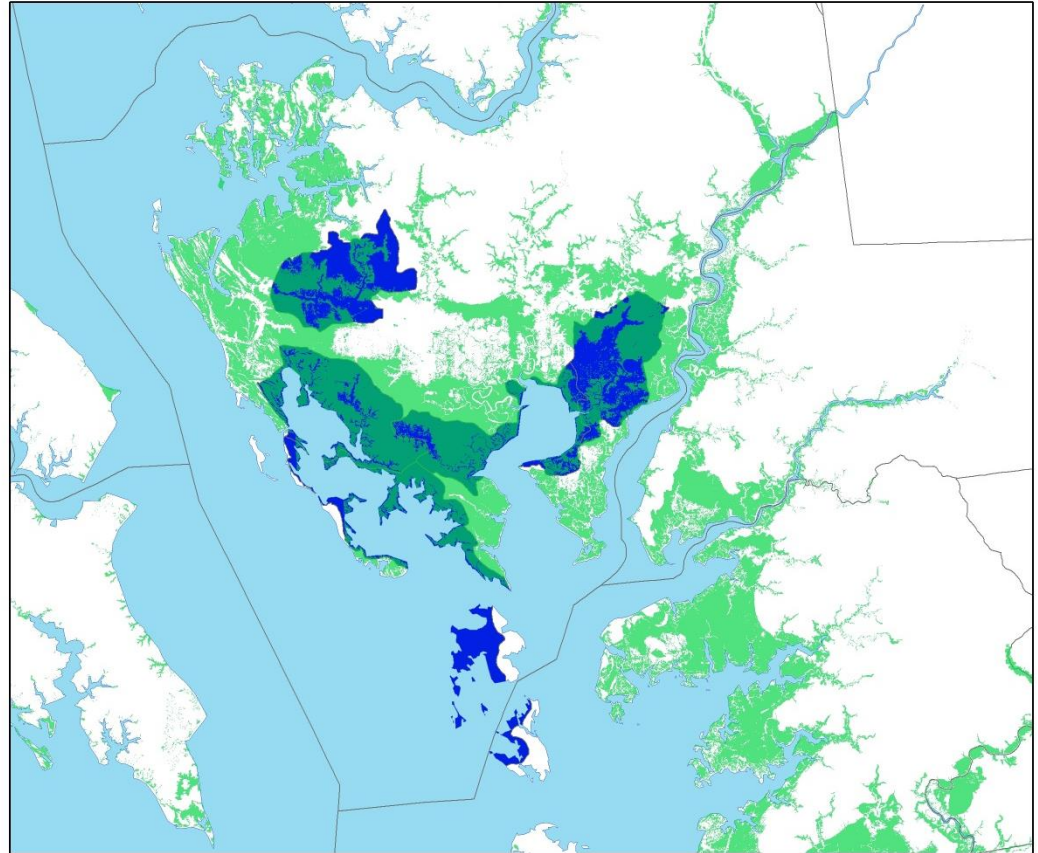
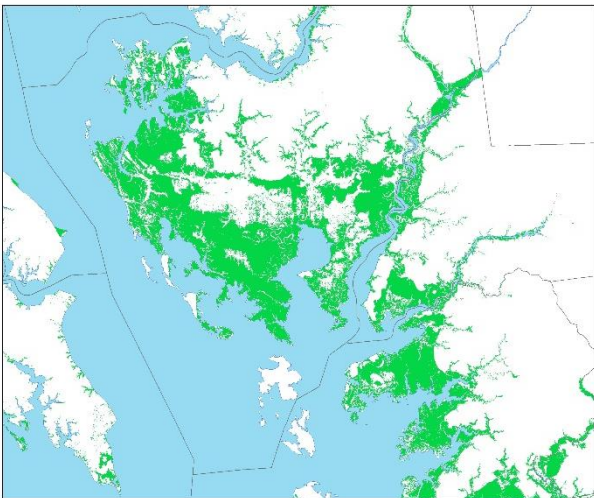
100 year flood plain boundary

Climate Layers

Top 20% Conservation Score

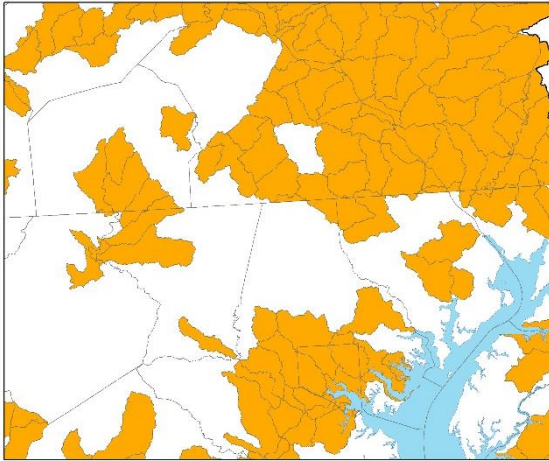


3 ft Sea Level Rise

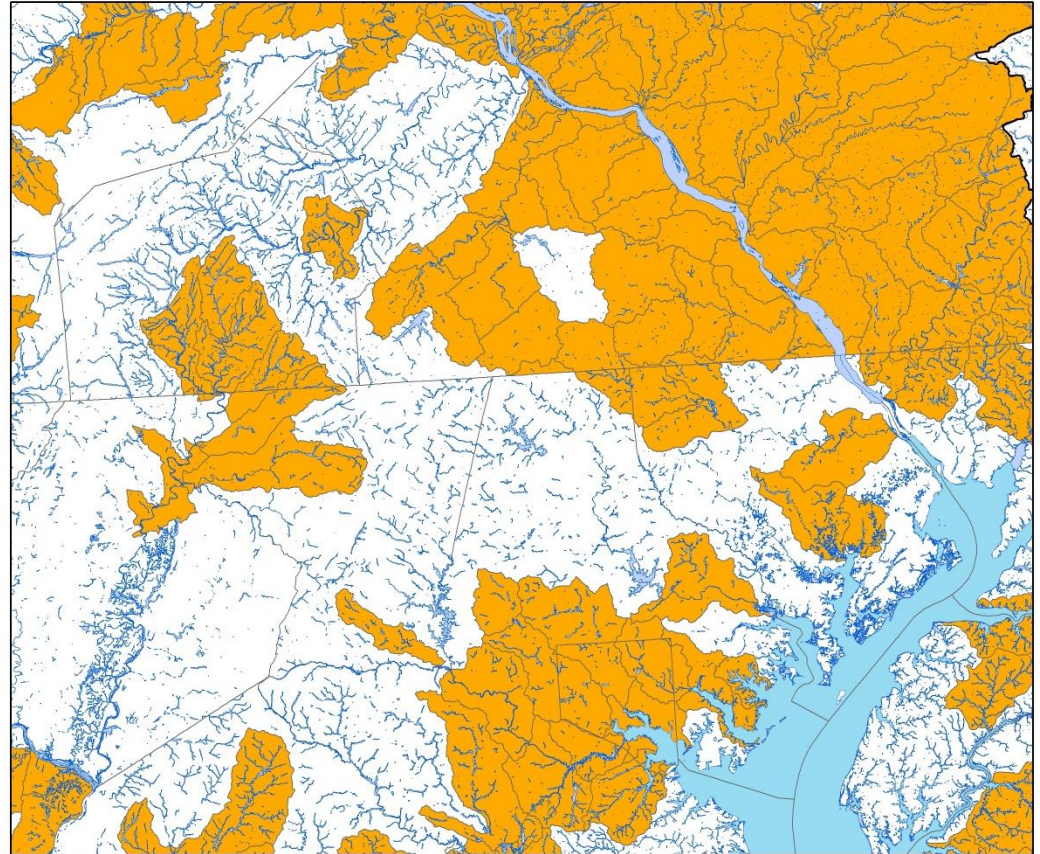
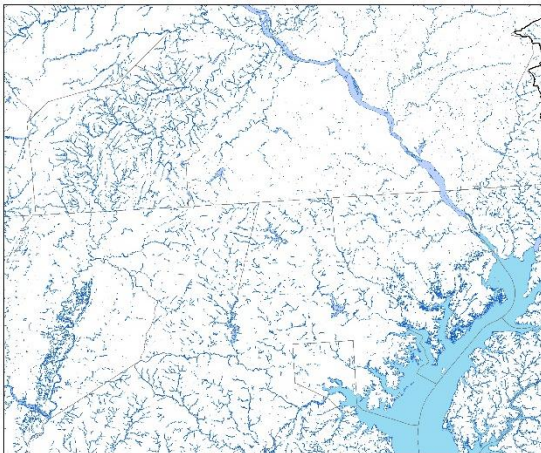


Climate Layers

Top 20% Restoration Score



Floodplain



Next Steps

- Share with:
 - GITs
 - Jurisdictions and federal partners (MB/PSC)
 - “Other” implementers
 - Such as USCOE, NFWF
- Use as part of SRS
 - Help focus 2016-17 efforts
 - Plan for 2018-19
- Evolve over time
 - Management questions, Viewers