

NRCS-EPA Federal Coordination Teams

To enhance coordination and communication of agricultural practice
and WQ monitoring activities and funding in the Chesapeake Bay
Watershed



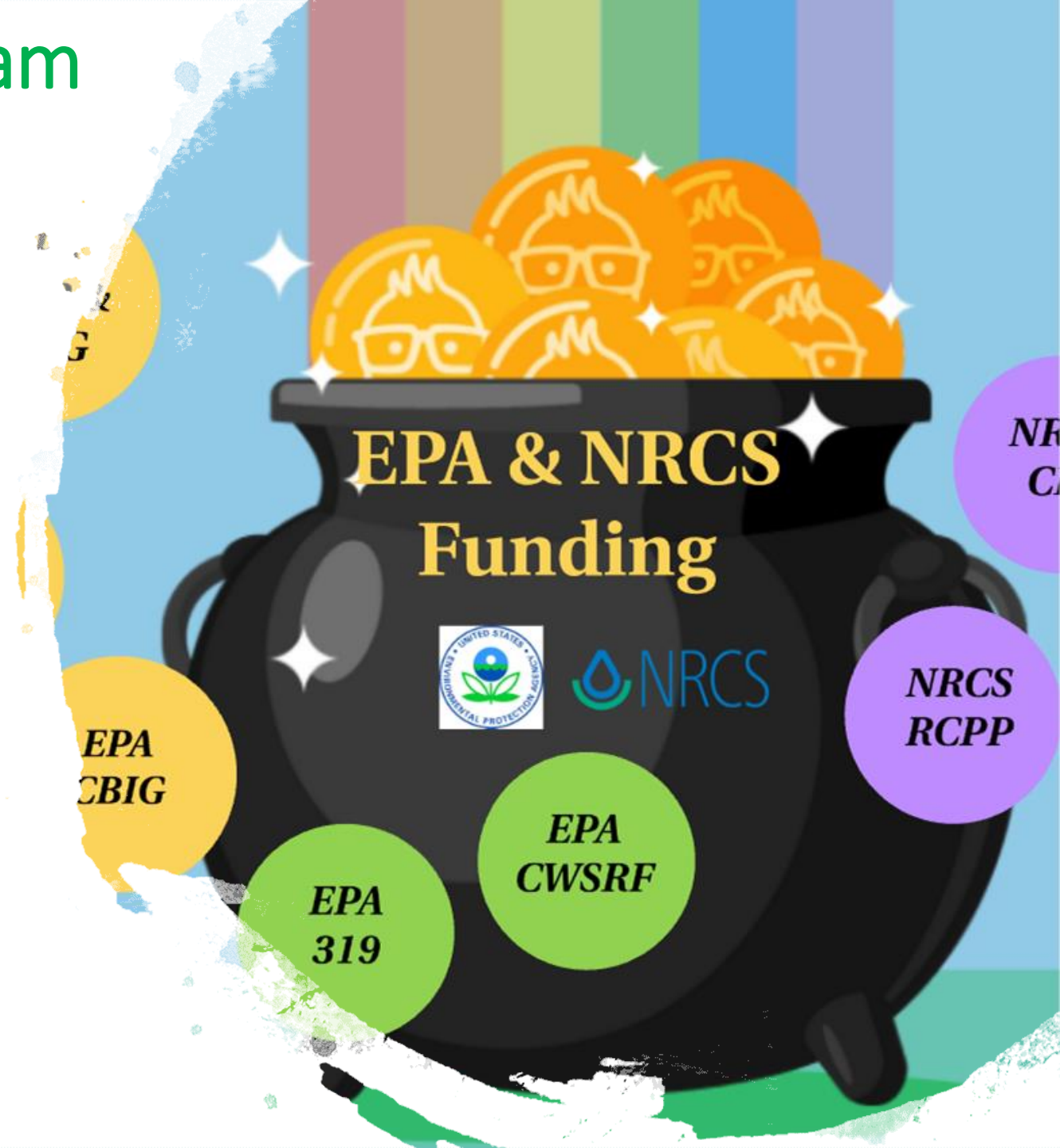
NRCS-EPA Ag Conservation Funding Team



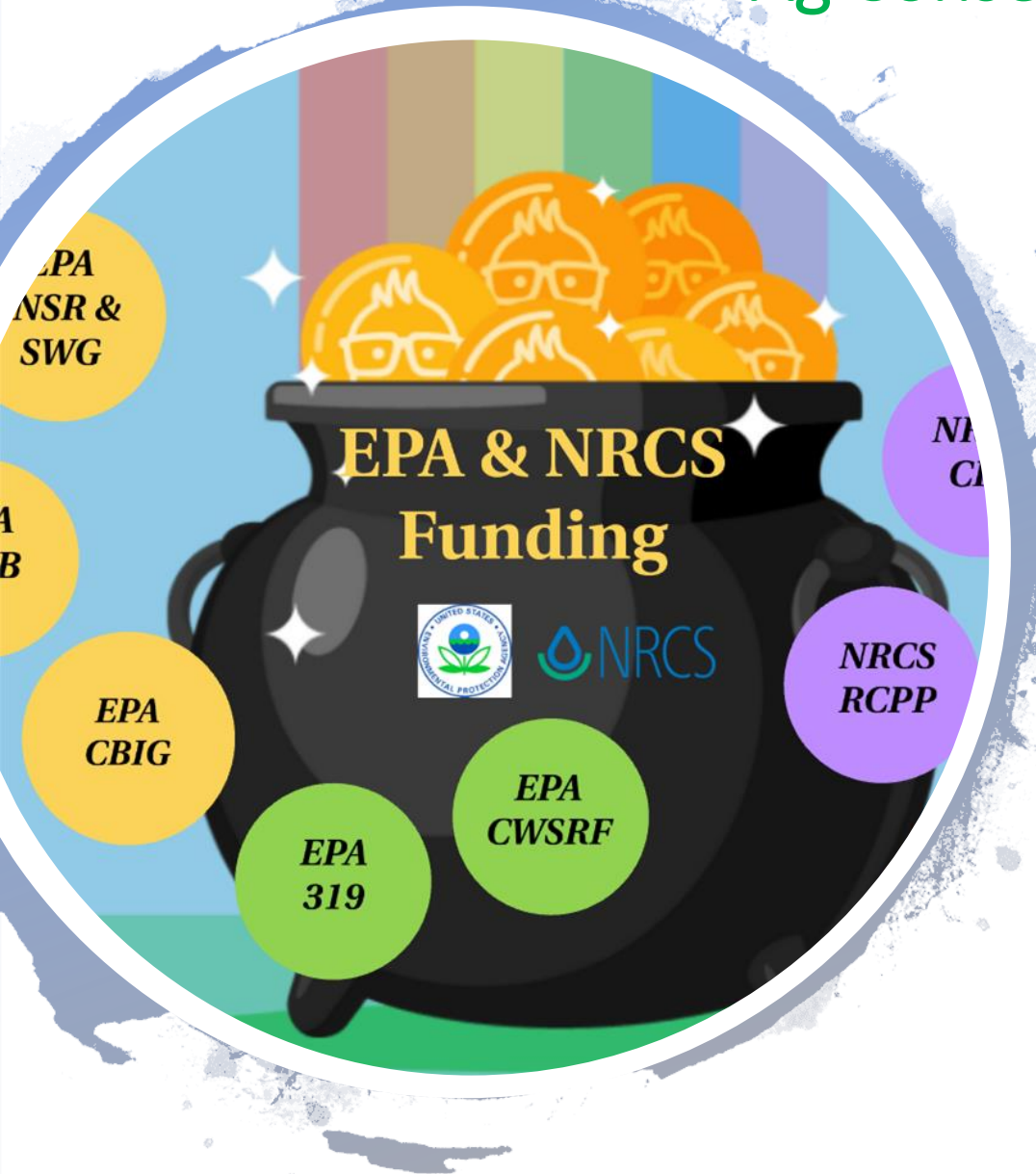
- Enhance ag conservation funding efforts.
- Ensure no unnecessary duplication of efforts.

Ag Conservation Funding Team Analysis and Products

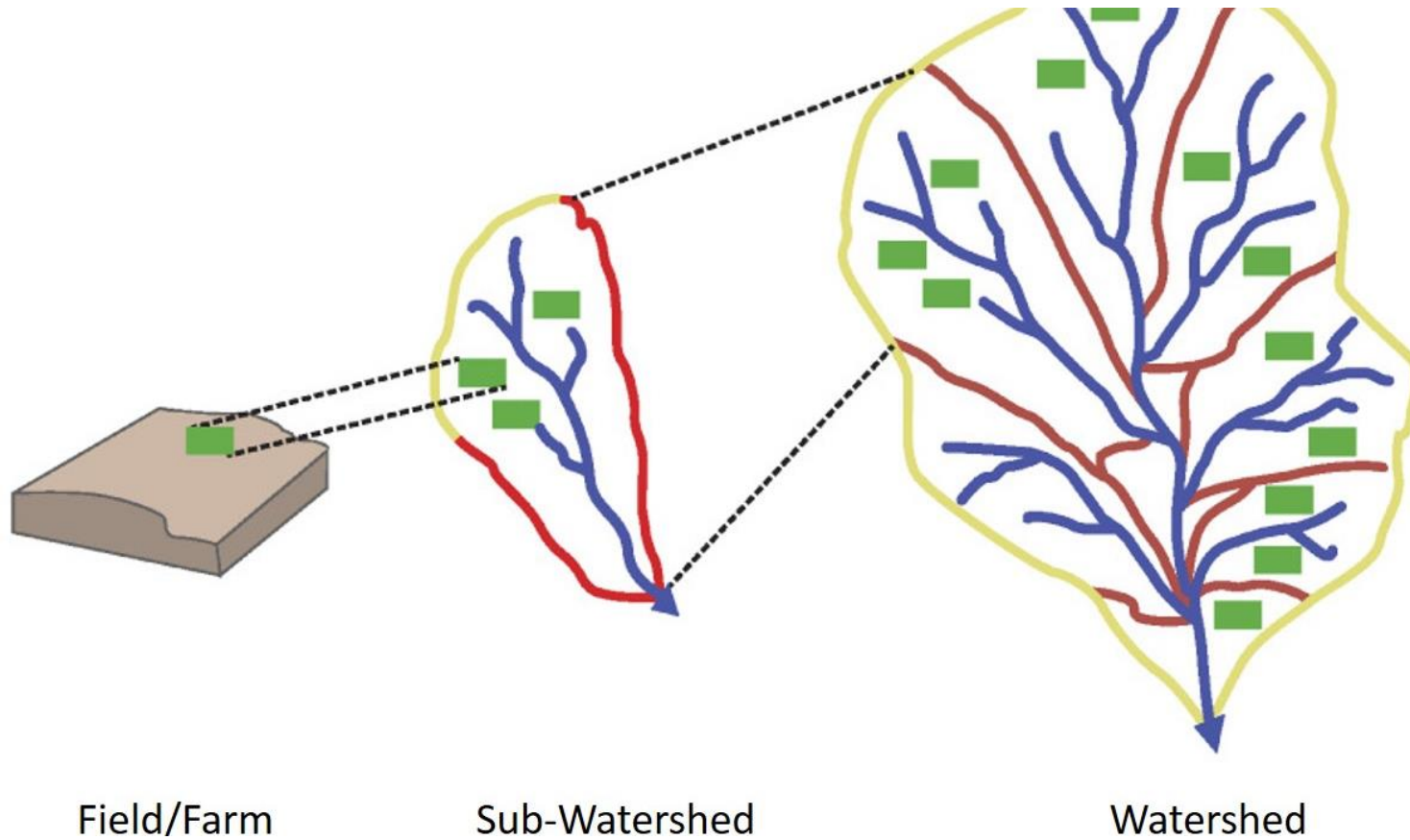
- Review of Funding Programs
- Comparative Analysis of Program Elements
 - Funding levels
 - Timing of solicitation
 - Priorities – geographic, practices
 - Match requirements
- Inventory of Projects Funded
- Analysis of Safeguards in Place to Avoid Duplication
- List of Successful Approaches to EPA-NRCS Funding Coordination



Ag Conservation Funding Team - Recommendations



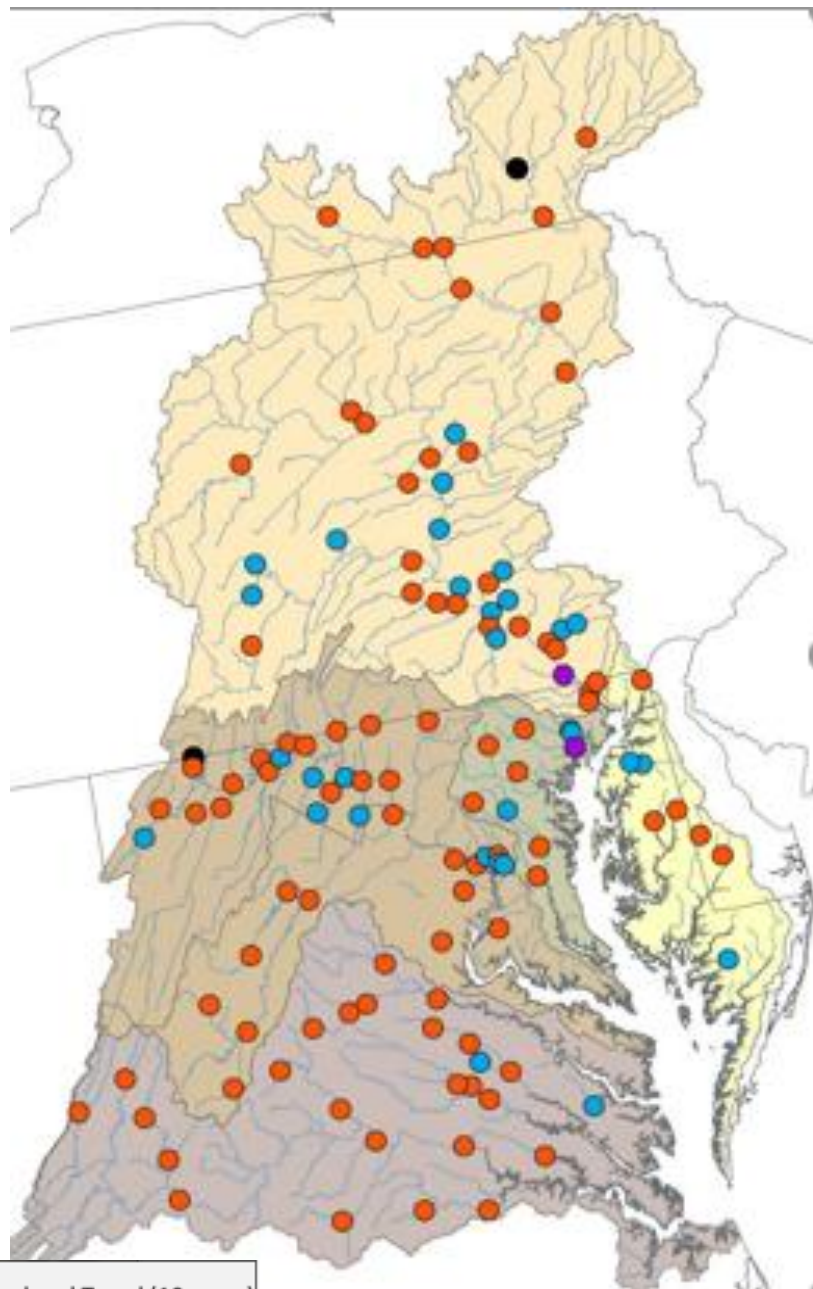
- Coordination Meetings – quarterly
- Joint “Match” Memo – EPA CB Grants/RCPP
- Ag Practice Standards
- CWSRF/EQIP Coordination – Outreach
- Source Water Protection
 - Data sharing – inform SWP area selections, priority practices, ranking criteria
 - Planning – EPA & SW Collaboratives support for Area-Wide Plans
 - Education & Outreach on SWP Funding Opportunities (CWSRF, Local Working Groups)
- Duplication of Payments
- Diversity – Historically Under-Served Farmers



NRCS-EPA-USGS WQ Monitoring Team

- Further coordinate water-quality monitoring, interpretation, and funding
- To assess the impact of agricultural conservation practice implementation on the quality of local streams, rivers, and the tidal Chesapeake Bay.

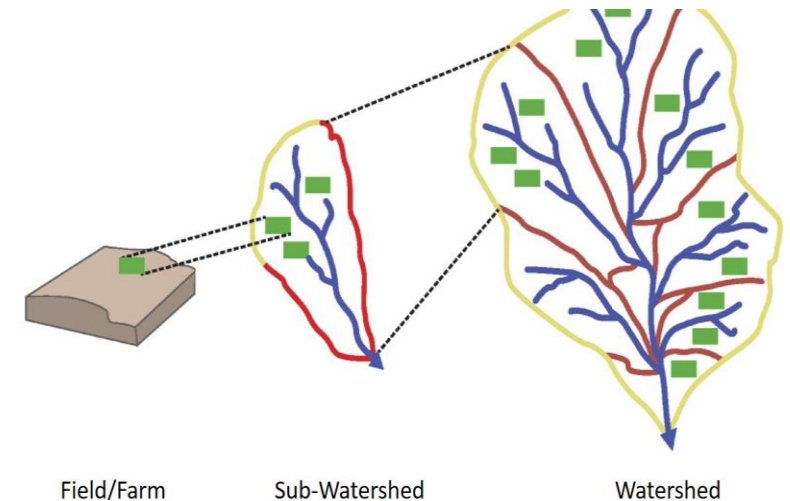
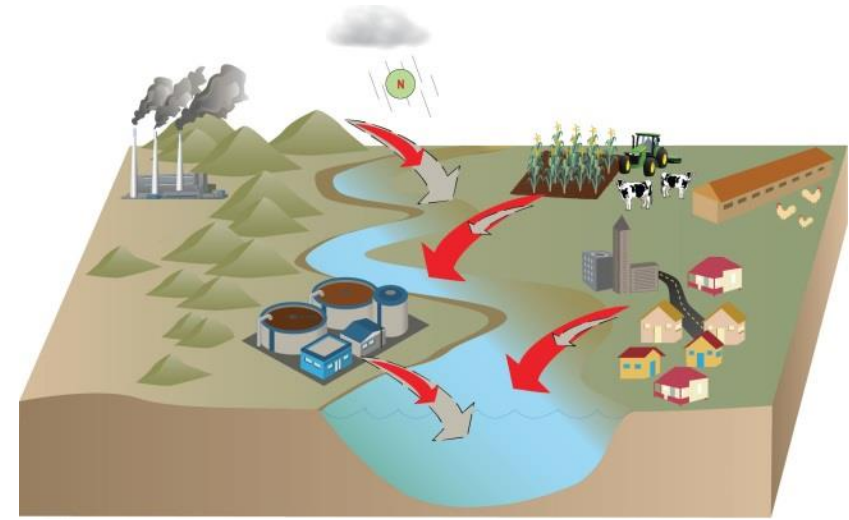
WQ Monitoring Team Analysis & Findings



- **Review of monitoring and analysis activities** (R3 and US)
- **Findings:**
 - Strong CB Non-Tidal Monitoring Network + Others.
 - On-line tools to compile WQ Data. (How's my Watershed)
 - Studies to assess impacts of practices on WQ.
- **Challenge:** Need enhanced monitoring at finer scale to connect practices with WQ changes.

WQ Monitoring Team Recommendations

- Identify Watersheds with greatest needs and opportunities for monitoring impacts of practices on WQ.
 - Develop criteria for selecting watersheds (extent of practices, monitoring)
 - Chose watersheds in each state
- Identify Opportunities to further coordinate WQ monitoring programs and interpretation of results.
 - Evaluate data & current interpretation, identify gaps, enhance monitoring and interpretation (may take additional resources)
- Improve Communication to engage decision makers.





Next Steps - Proposed

- Senior Executive Briefing
 - NRCS and USGS leadership enthusiastically concurred.
 - NRCS/EPA briefing – to be scheduled.
- Develop a timeline for implementation of approved recommendations (January 31, 2021)
- Local Workshops Team Activities Commence (February)

