



Chesapeake Bay Streamflow Base and Critical Period Diagnostics

Robin Glas

Hydrologist

U.S. Geological Survey

New York Water Science Center

Troy, NY

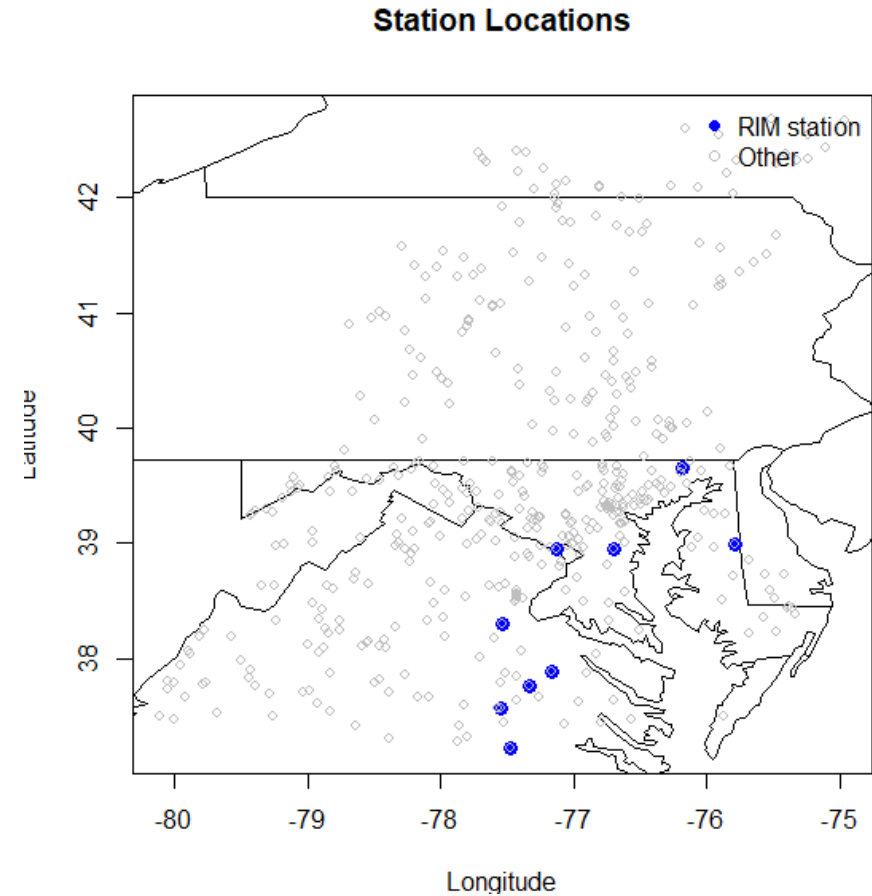
This information is preliminary or provisional and is subject to revision. It is being provided to meet the need for timely best science. The information has not received final approval by the U.S. Geological Survey (USGS) and is provided on the condition that neither the USGS nor the U.S. Government shall be held liable for any damages resulting from the authorized or unauthorized use of the information.

River Input Monitoring (RIM) station 10-year rolling window approach

- Daily USGS streamflow records were compiled for all stations and padded to a continuous daily sequence.
- Analyses were restricted to **Water Years 1970–2024** to reflect the modern hydroclimatic period.
- Annual metrics were computed only for water years with:
 - **$\geq 90\%$ daily data completeness**, and
 - **≥ 330 observed daily values** per water year.
- Rolling windows were evaluated only when **all years within the window met annual completeness criteria**.
- This screening minimizes influence of partial records, start/end-of-record artifacts, and padded years.

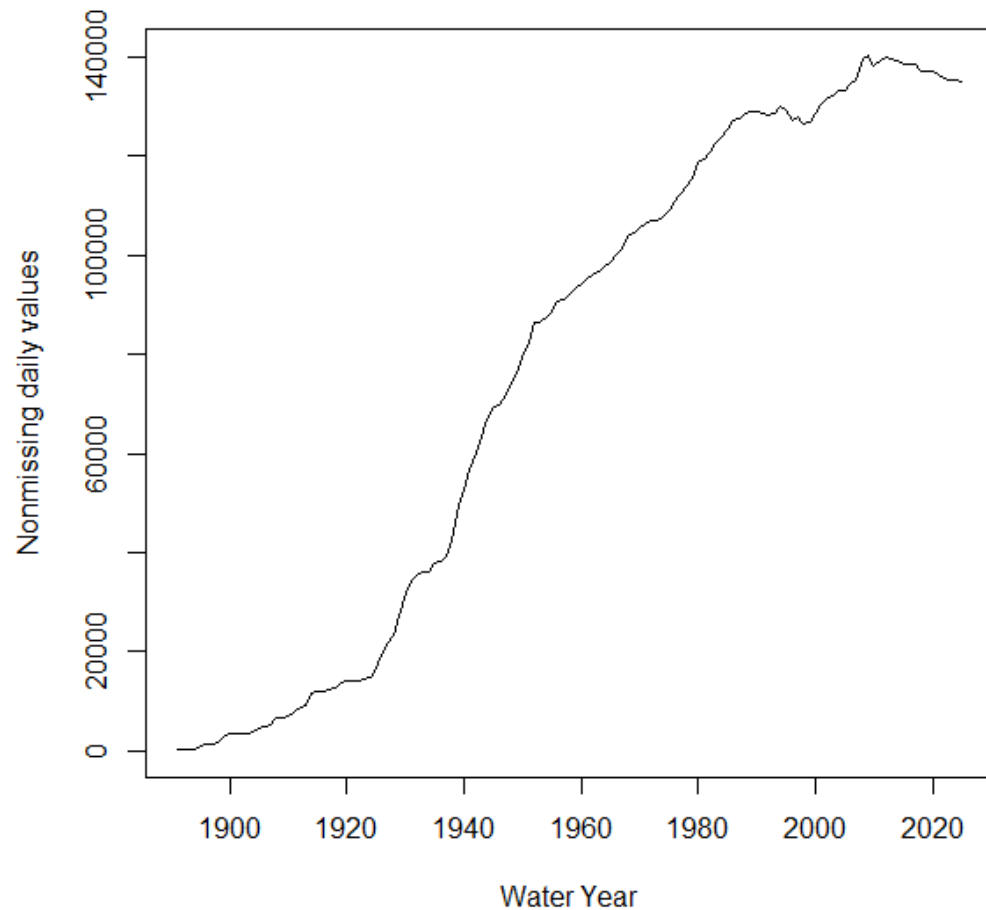
Stations included in base/critical period analysis

- RIM stations define basin-scale freshwater inputs used for model calibration.
- Secondary tributary stations will supplement this analysis to refine characterization of critical and high-stress hydrologic periods
- Basin-scale summaries will incorporate relative flow contribution weighting, following the framework illustrated in Appendix G.

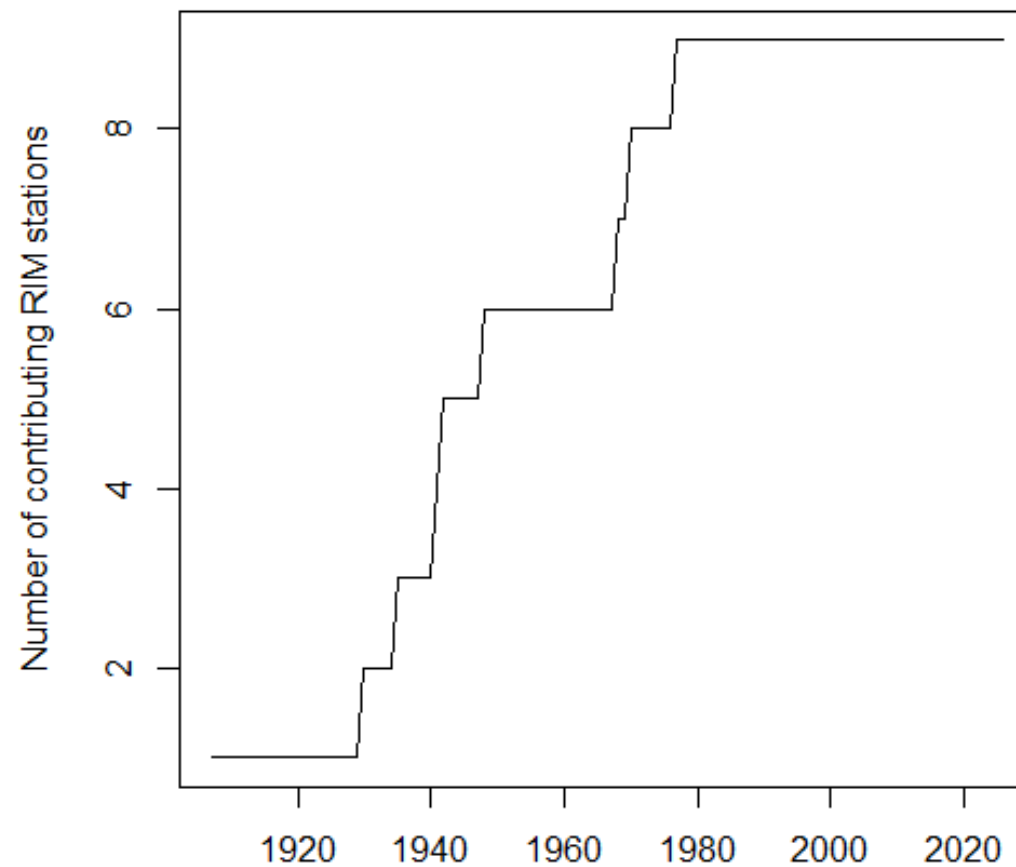


Preliminary Information-Subject to Revision. Not for Citation or Distribution

Total RIM Daily Observations per Water Year

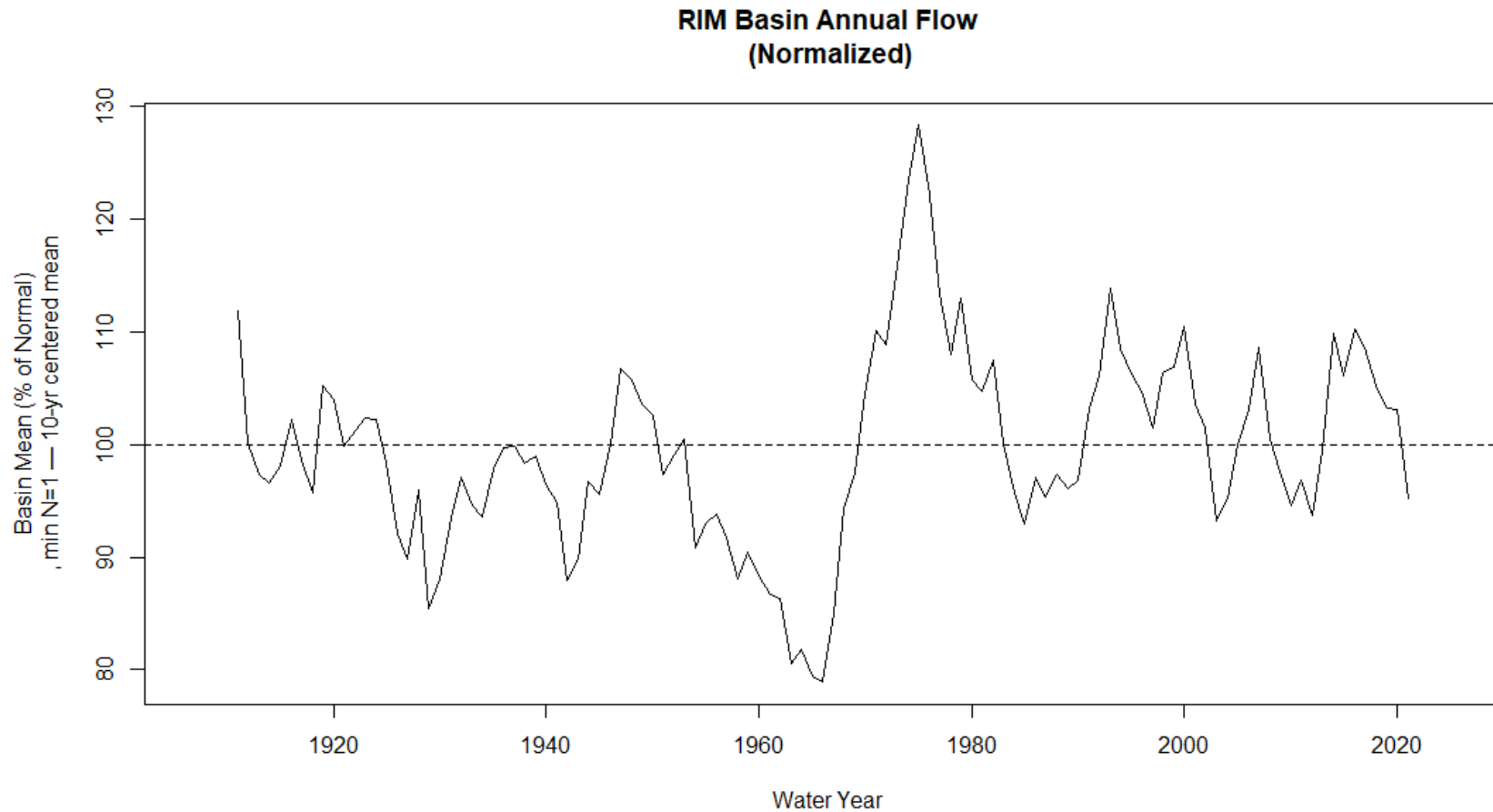


RIM station count



Preliminary Information-Subject to Revision. Not for Citation or Distribution

Entire record- (all RIM stations, equal weighting)

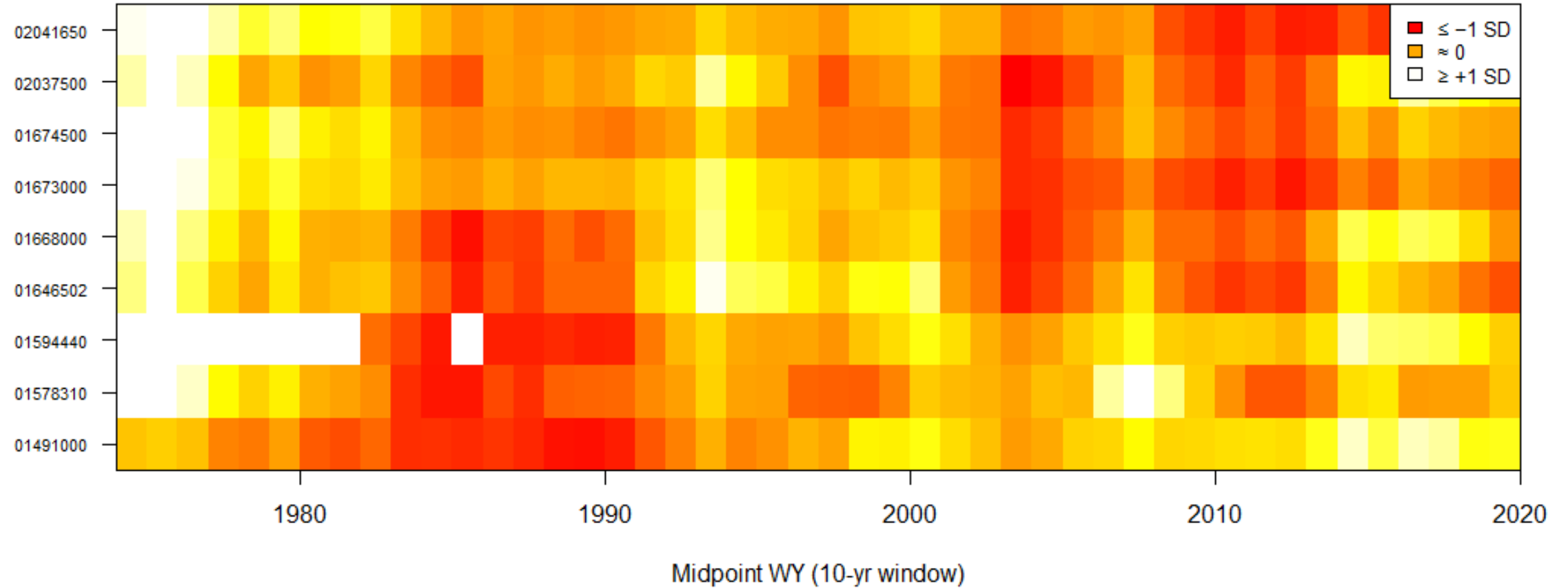


Preliminary Information-Subject to Revision. Not for Citation or Distribution

Annual metrics

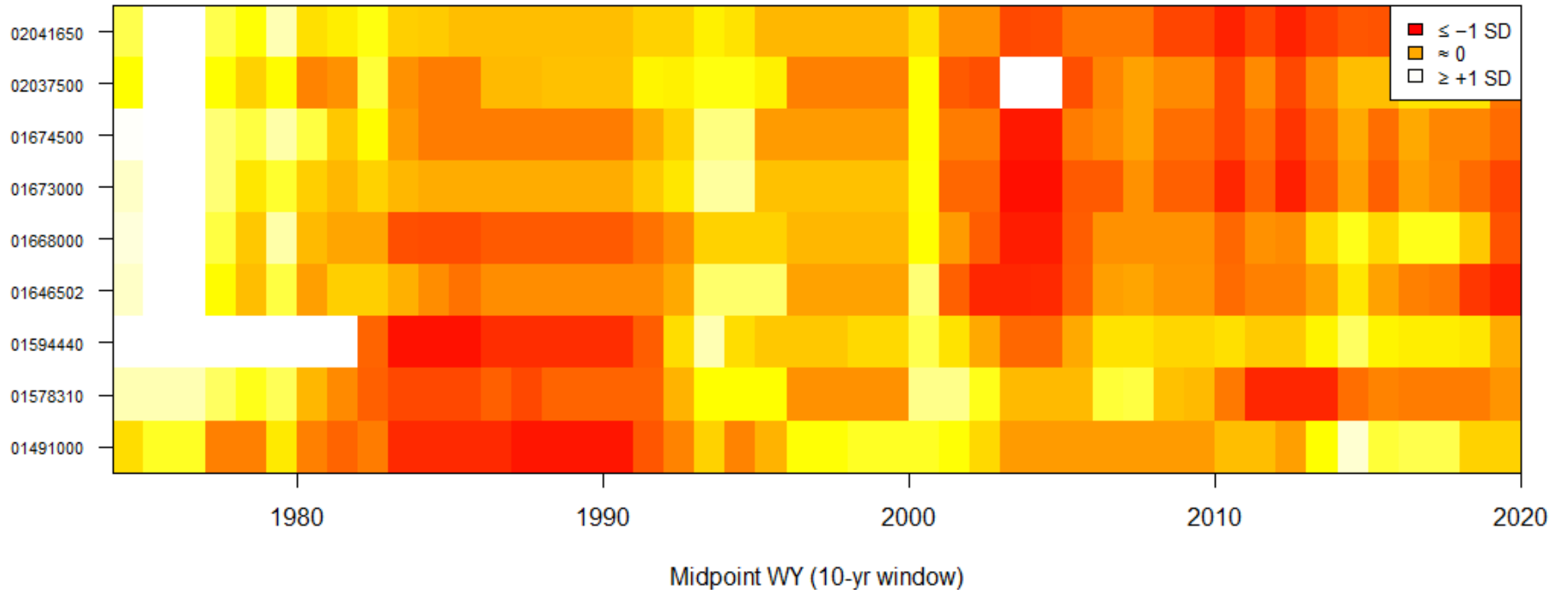
- Daily streamflow are summarized to **annual metrics** for each station:
 - Mean and median daily flow
 - Lower tail quantiles (Q05, Q10)
 - Upper tail quantiles (Q90, Q95)
 - Variability metrics (e.g., coefficient of variation)

RIM stations: rolling 10-yr mean annual Q (z-score)



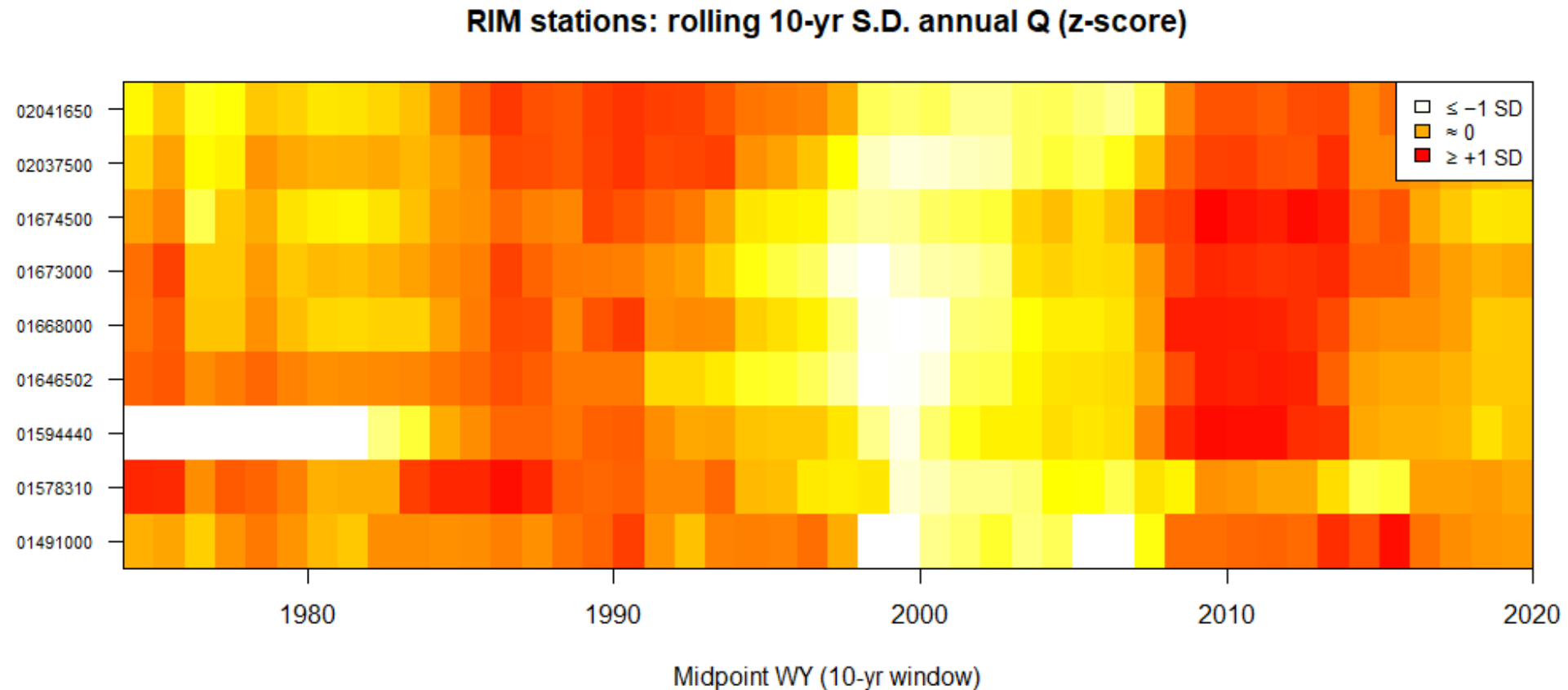
Preliminary Information-Subject to Revision. Not for Citation or Distribution

RIM stations: rolling 10-yr median annual Q (z-score)



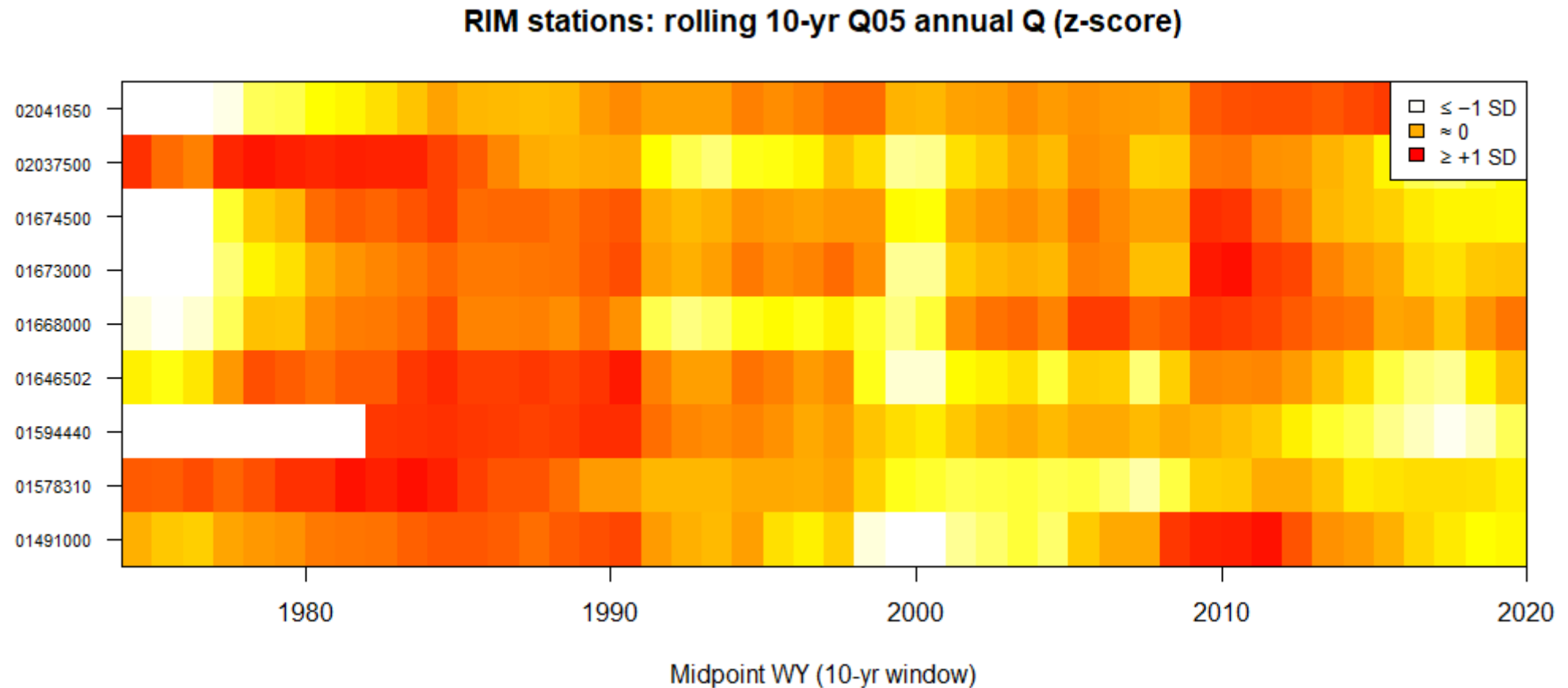
Preliminary Information-Subject to Revision. Not for Citation or Distribution

Annual flow variability (standard deviation)



Preliminary Information-Subject to Revision. Not for Citation or Distribution

Low flow magnitudes (Q05)



High flow magnitudes (Q95)

