

Factoring in the Influence of the Conowingo Reservoir on State Allocations

Presented to the Chesapeake Bay Program
Modeling Workgroup

October 4, 2016

Lee Currey

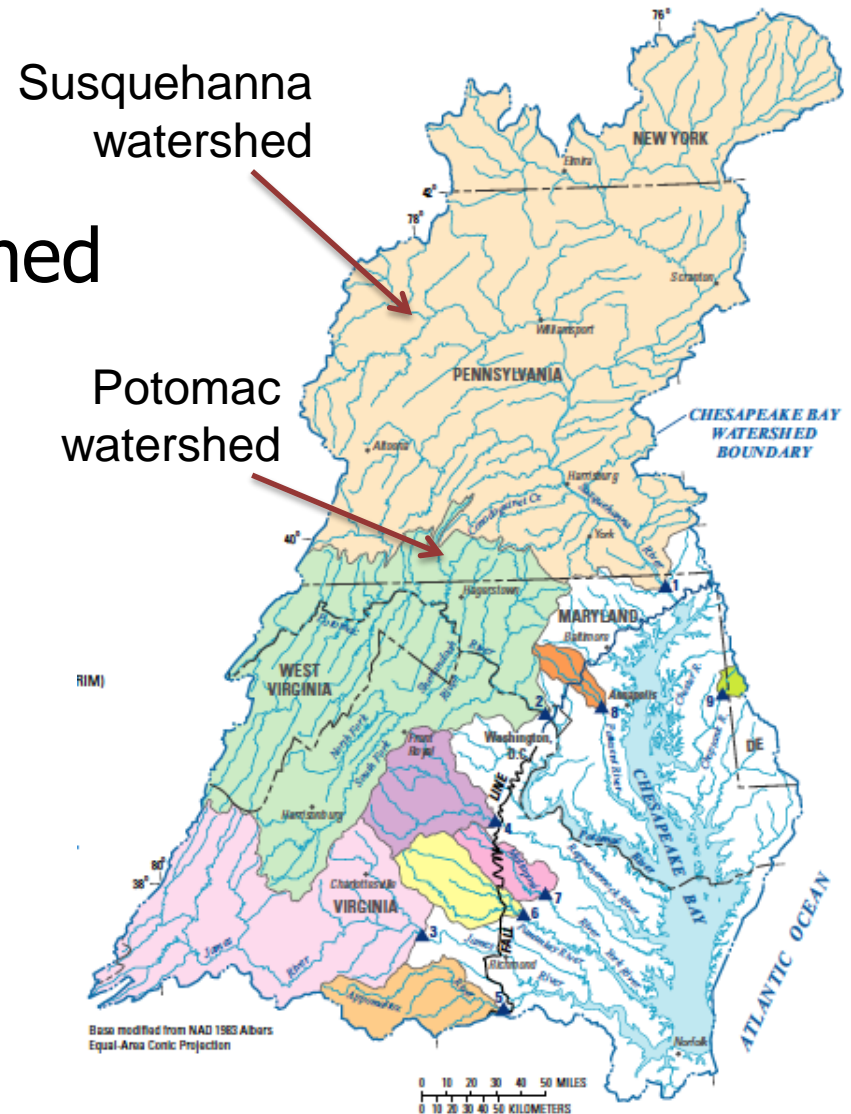
Goals for this Talk

- A synthesis of what current research is telling us about changes in the reservoir system
- Insight on how these findings could impact state allocations
- A timeline for determining the impact to jurisdiction allocations in the Phase III WIP

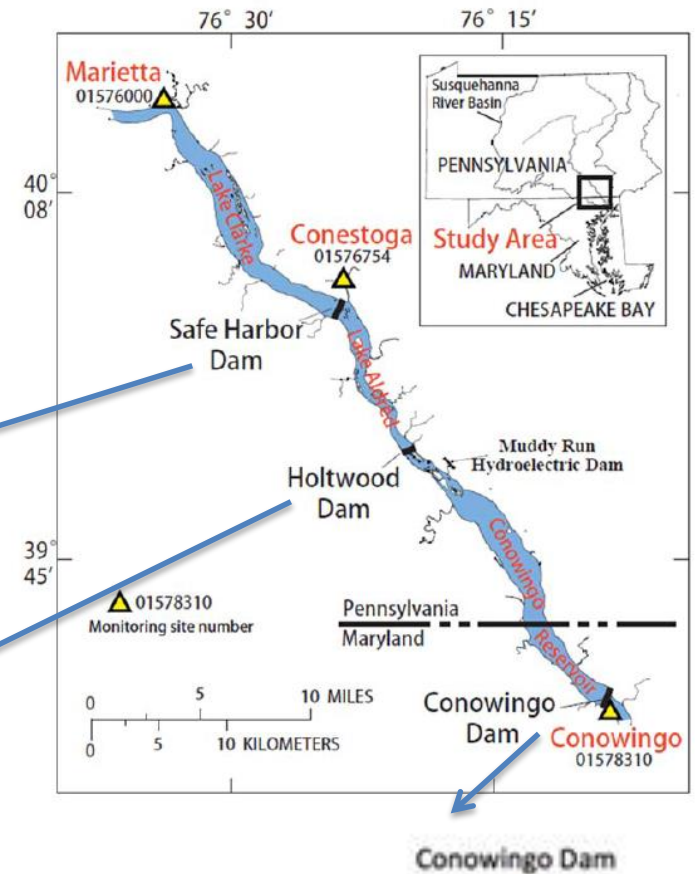
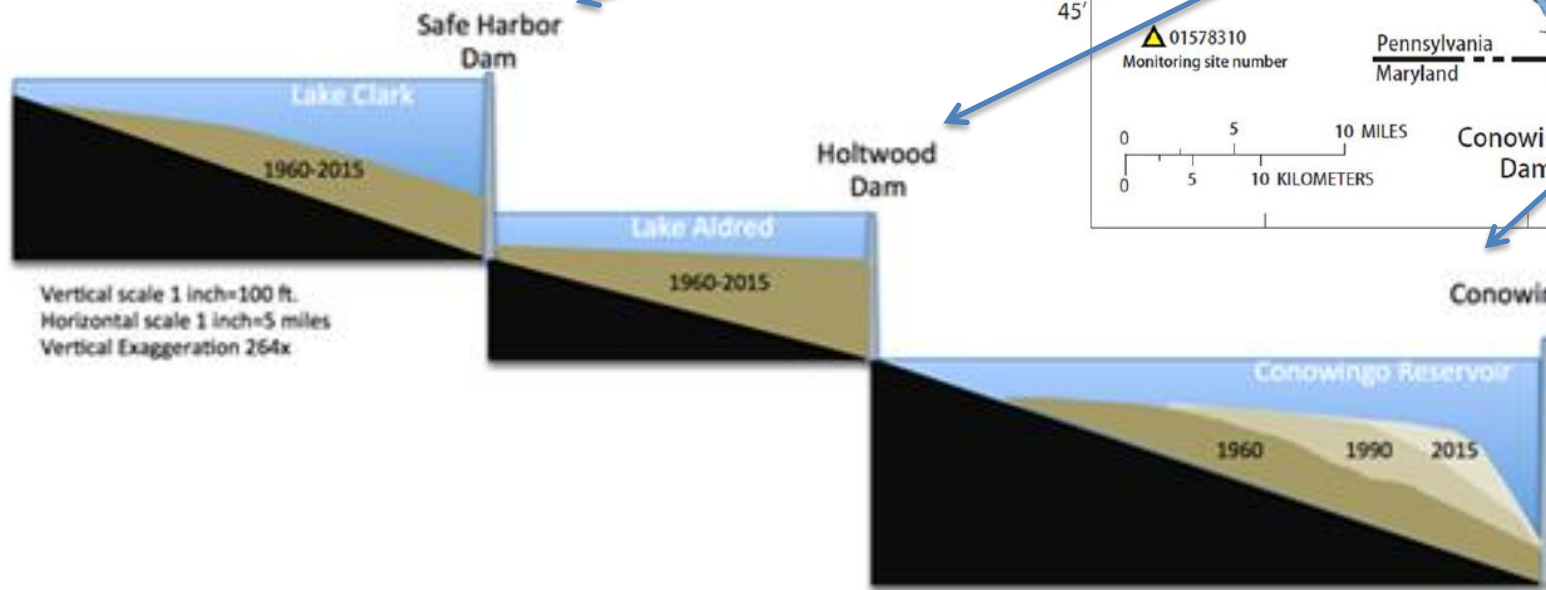
**WHAT IS SCIENCE TELLING US
ABOUT THE RESERVOIR SYSTEM?**

Susquehanna River Has Major Influence on Chesapeake Bay Water Quality

- 43% of the Bay watershed
- 47% of fresh water
- 41% of nitrogen
- 25% of phosphorus
- 27% of sediment



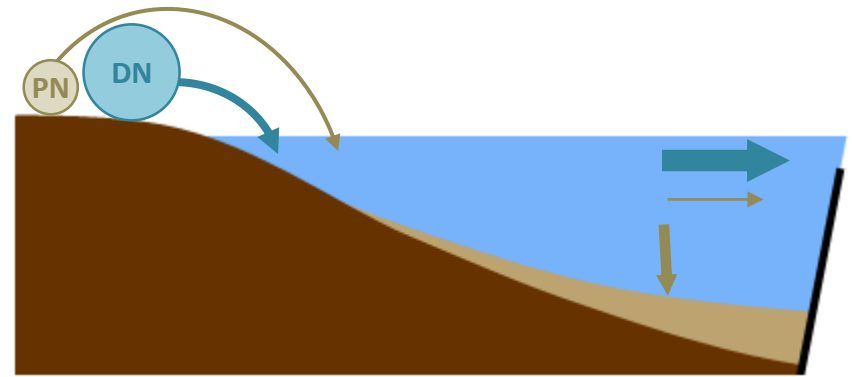
System of Reservoirs has been filling, is rapidly approaching capacity, net trapping is much smaller, need to account for these recent changes in allocations



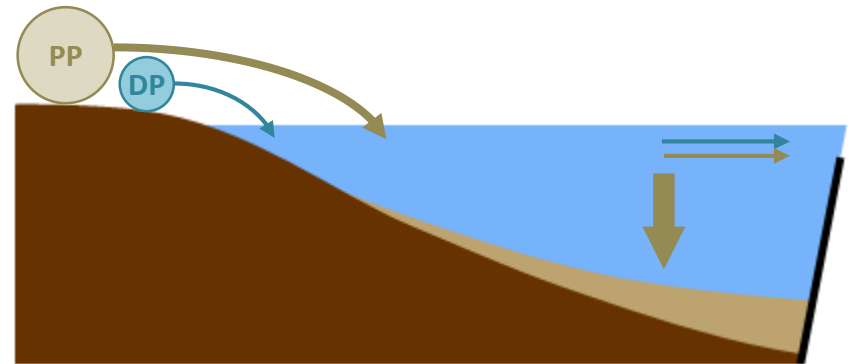
In a reservoir
with capacity,
most of the
nitrogen is
moving through
while most of
the phosphorus
settles out and
is “trapped”

Loss of trapping
will have more
impact on P and
Sed, than N

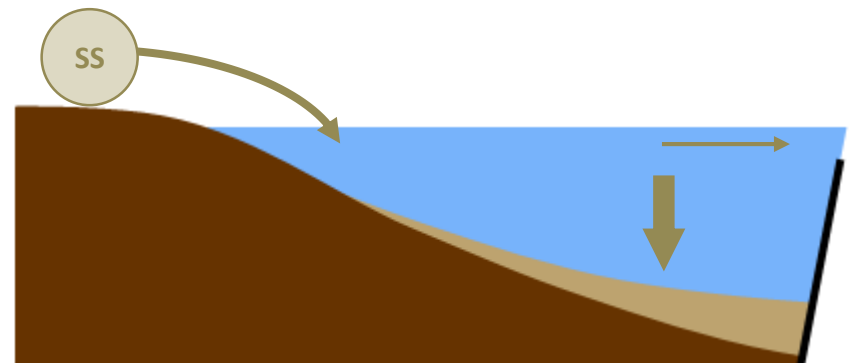
Nitrogen



Phosphorus



Sediment



reservoir with trapping capacity

2016 STAC Workshop

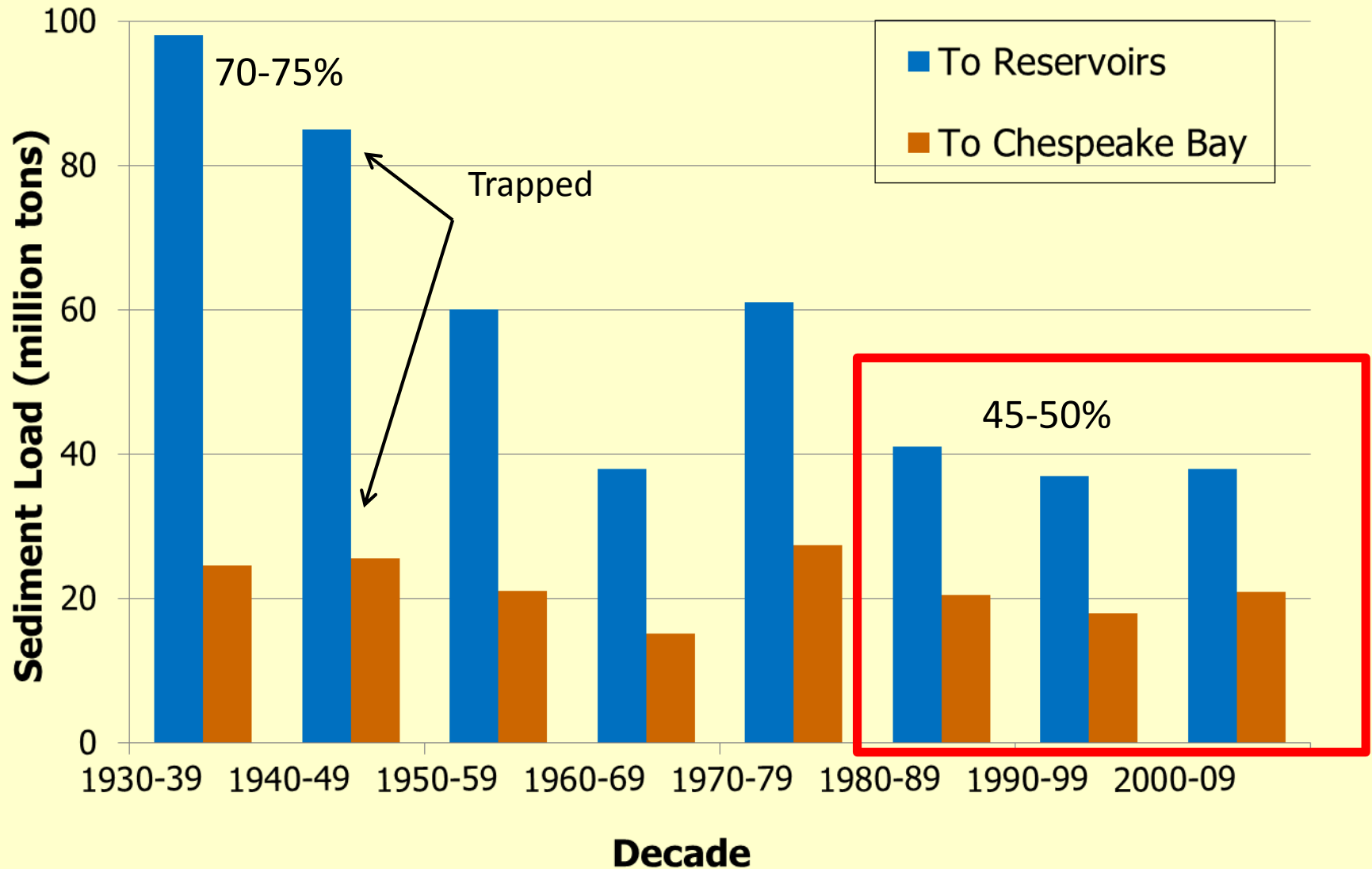
- Reservoir system has long been a trap for particulate nutrients and sediment but is at a condition of dynamic equilibrium
- Sediment, and particulate nutrient load, due to infill is considerably different now than the first 80 – 90 yrs.
- To quantify the influence, the following must be considered:
 - Loss of trapping during low to moderate flow
 - Change in scour threshold during higher flows
 - Relatively rare extreme events
 - Fate of particulate material to the Bay

Monitoring, data analysis, and research related to this issue have accelerated substantially since 2011 and is guiding current modeling refinements

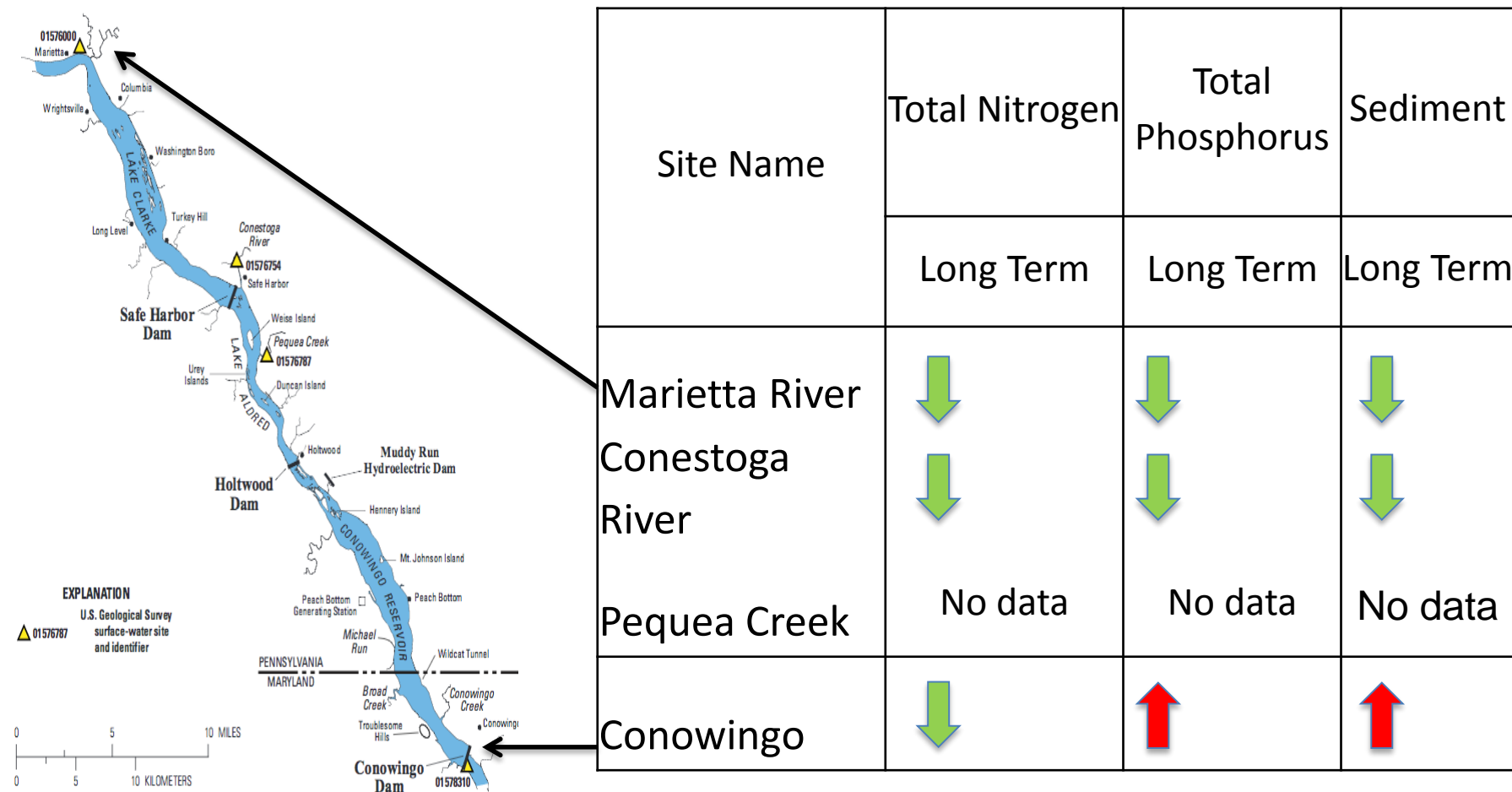
- US Geological Survey (2012, 2014, 2015)
- US Army Corps of Engineers (2015)
- Johns Hopkins University (2013, 2015, 2016)
- EPA CBP Scientific and Technical Advisory Committee (2014, 2016)
- Enhanced Monitoring and Modeling (Exelon, University of Maryland, USGS)



Trapping has significantly decreased over last century and now considered to be in dynamic equilibrium



Nutrient and sediment loading trends into and out of the reservoir system (1985 to 2015)

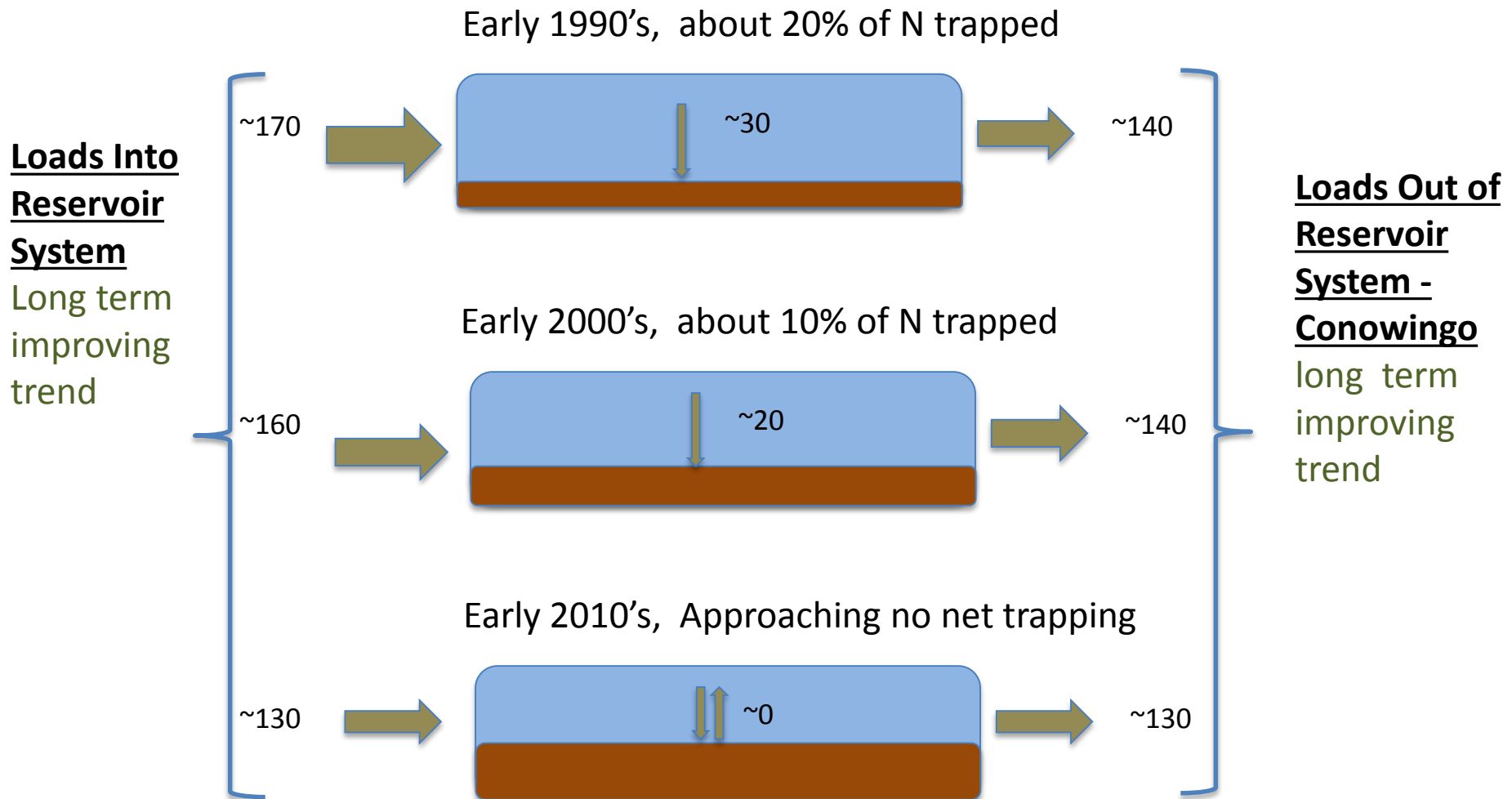


- improving

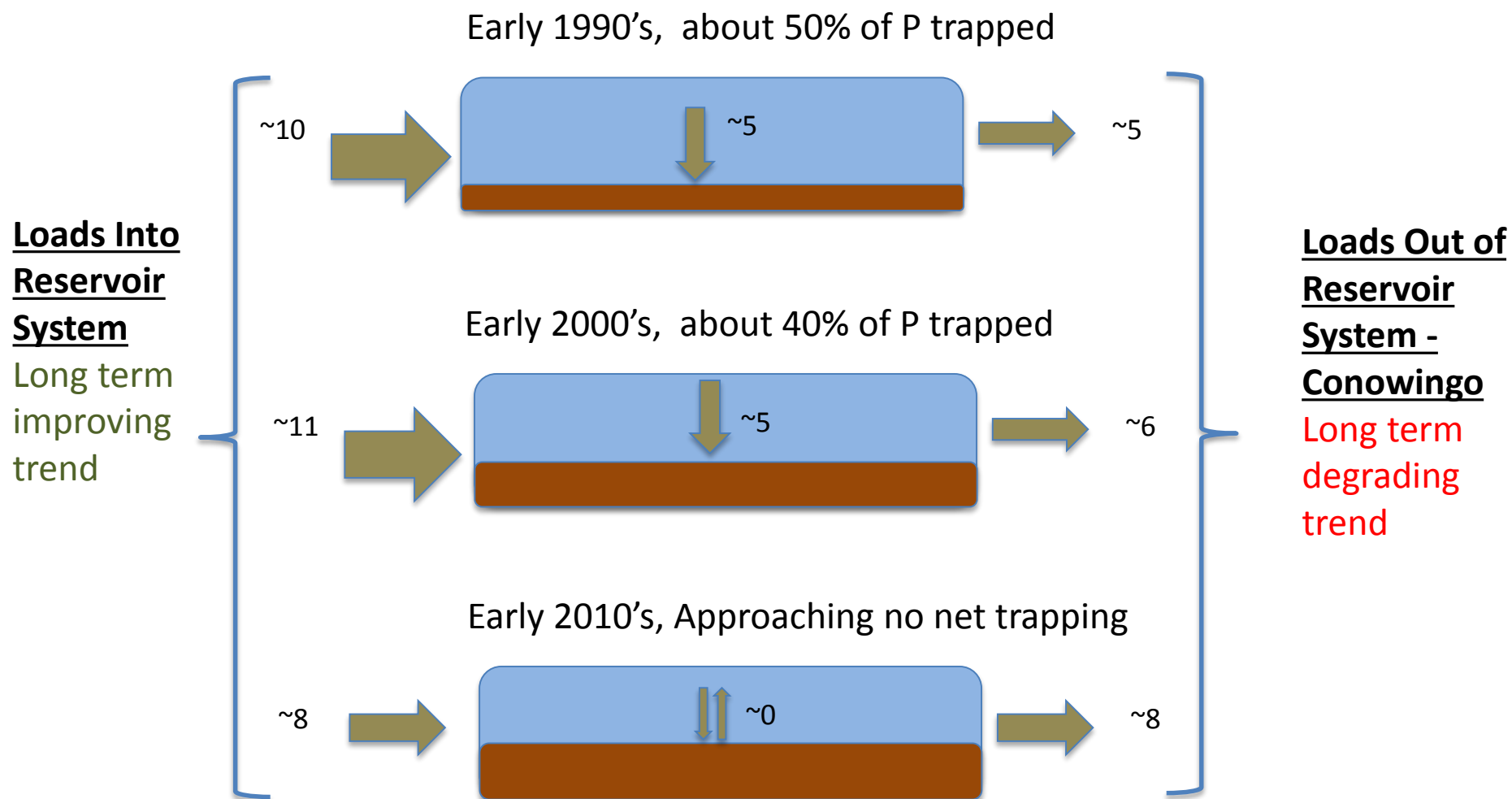


- degrading

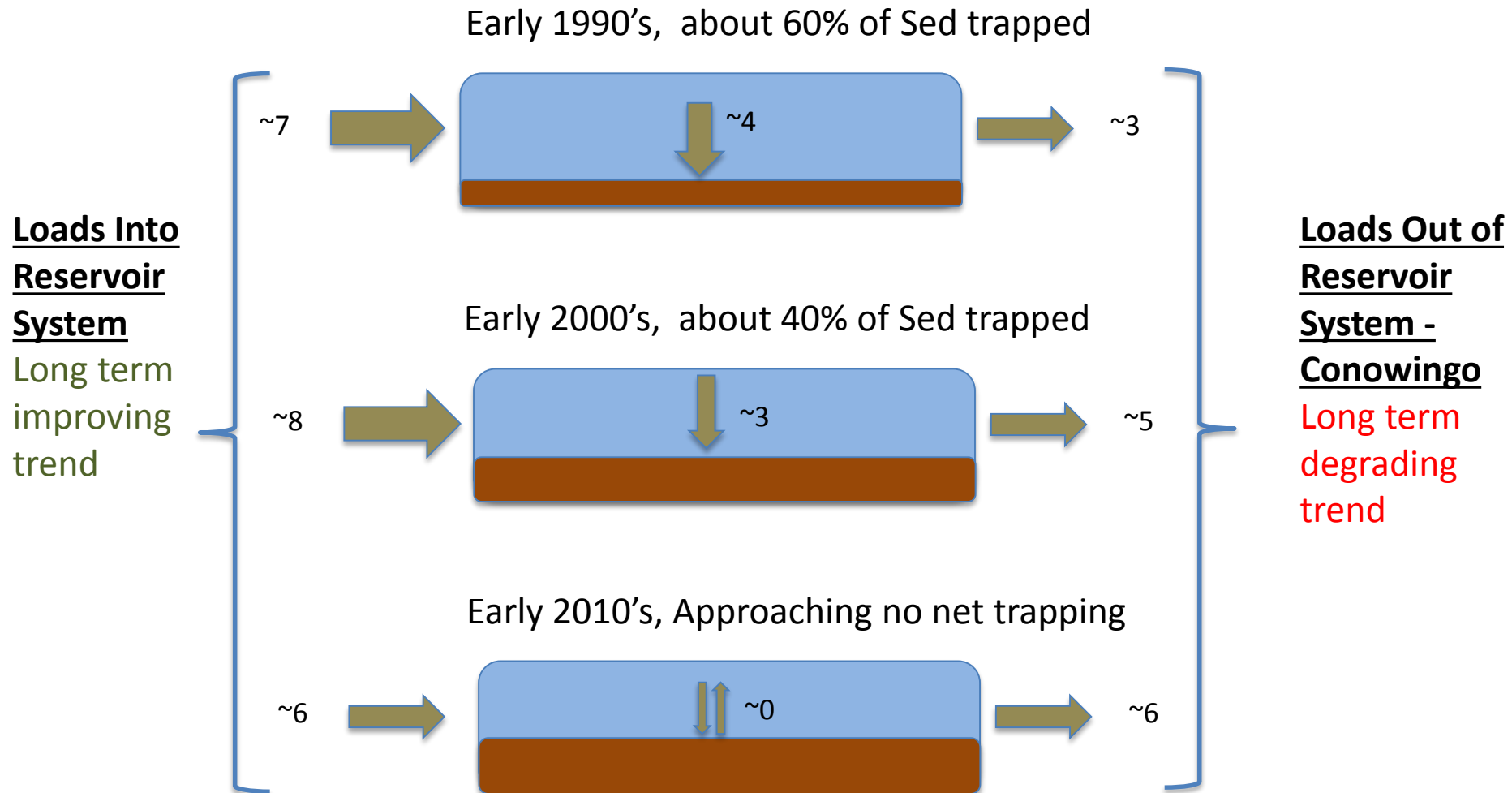
Let's take a look at three time periods to better understand the system behavior; Nitrogen



Phosphorus



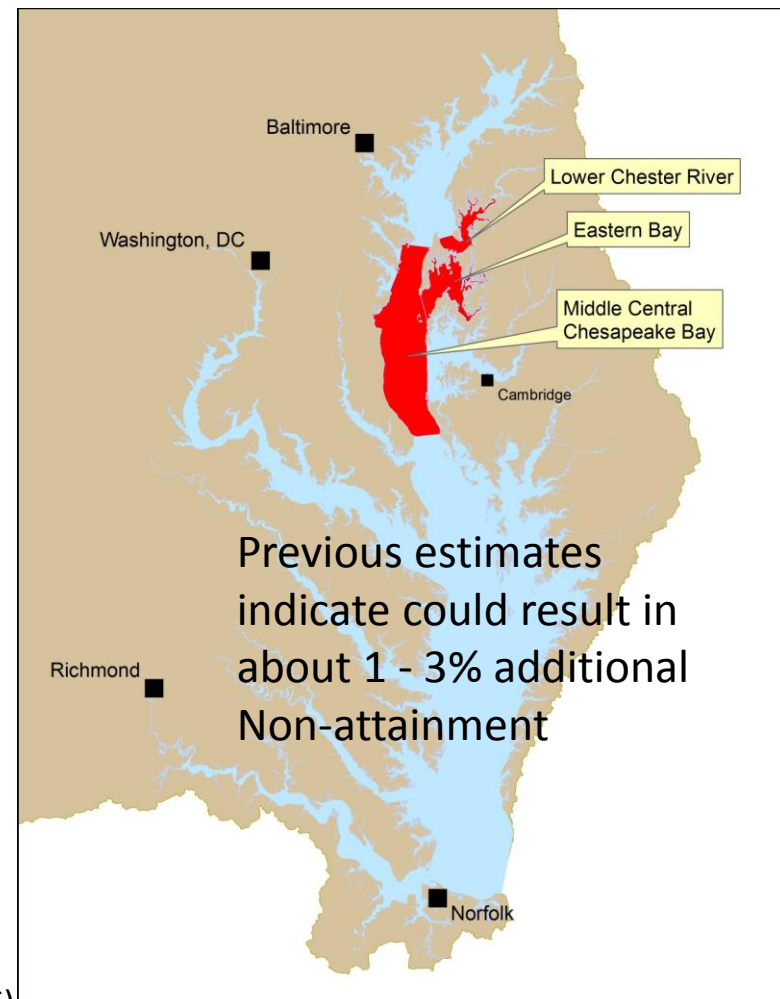
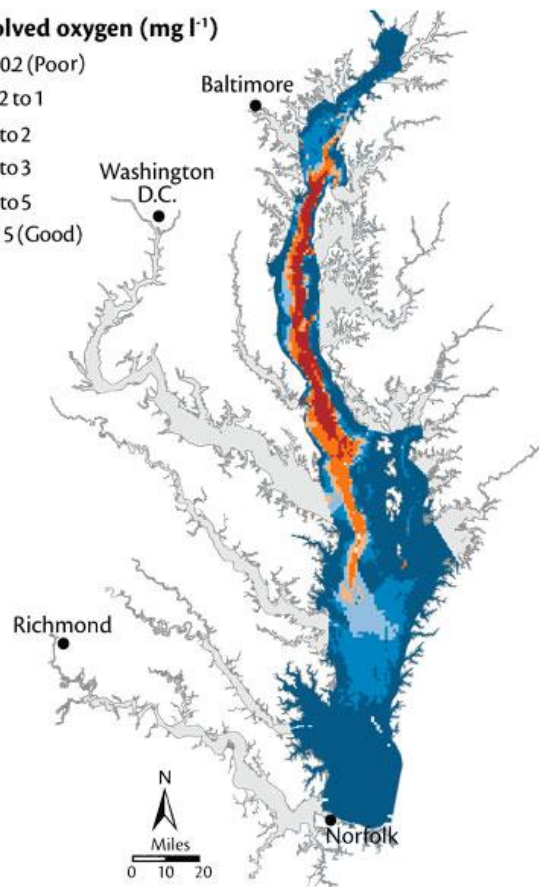
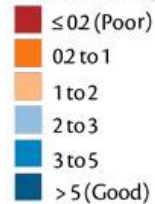
Sediment



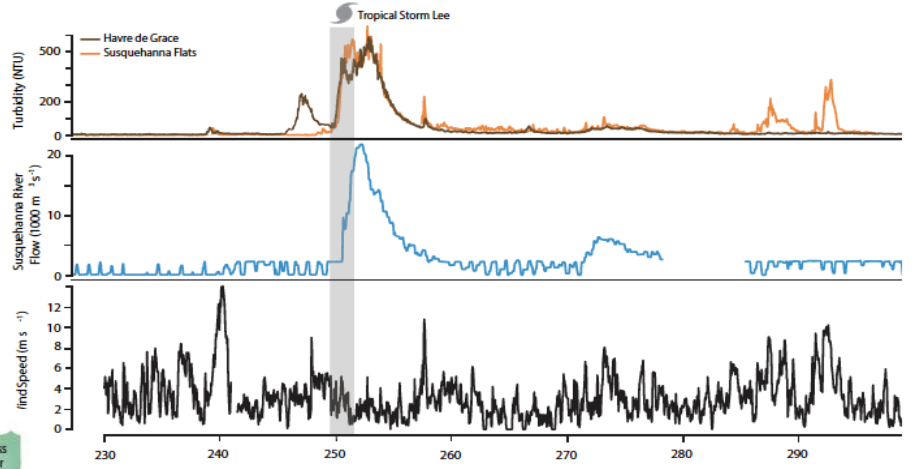
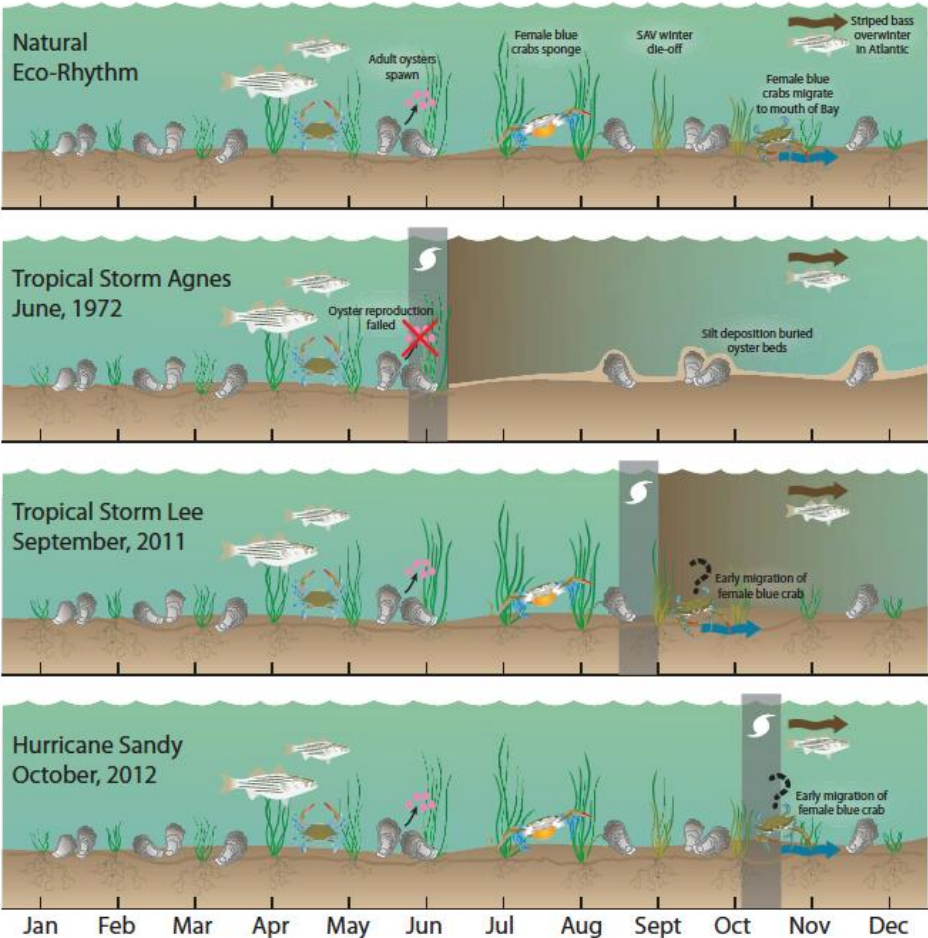
Increased particulate nutrients, as a result of less trapping, appear to have more influence on the ability to meet Bay TMDL water quality goals than increased sediments. Fate of material being factored in now.

Late August 2009

Dissolved oxygen (mg l⁻¹)



Extreme events have impacts but are relatively rare, timing is important, clarity recovers relatively quickly, resiliency between events important for recovery



Source: Images UMCES

Take Away Messages

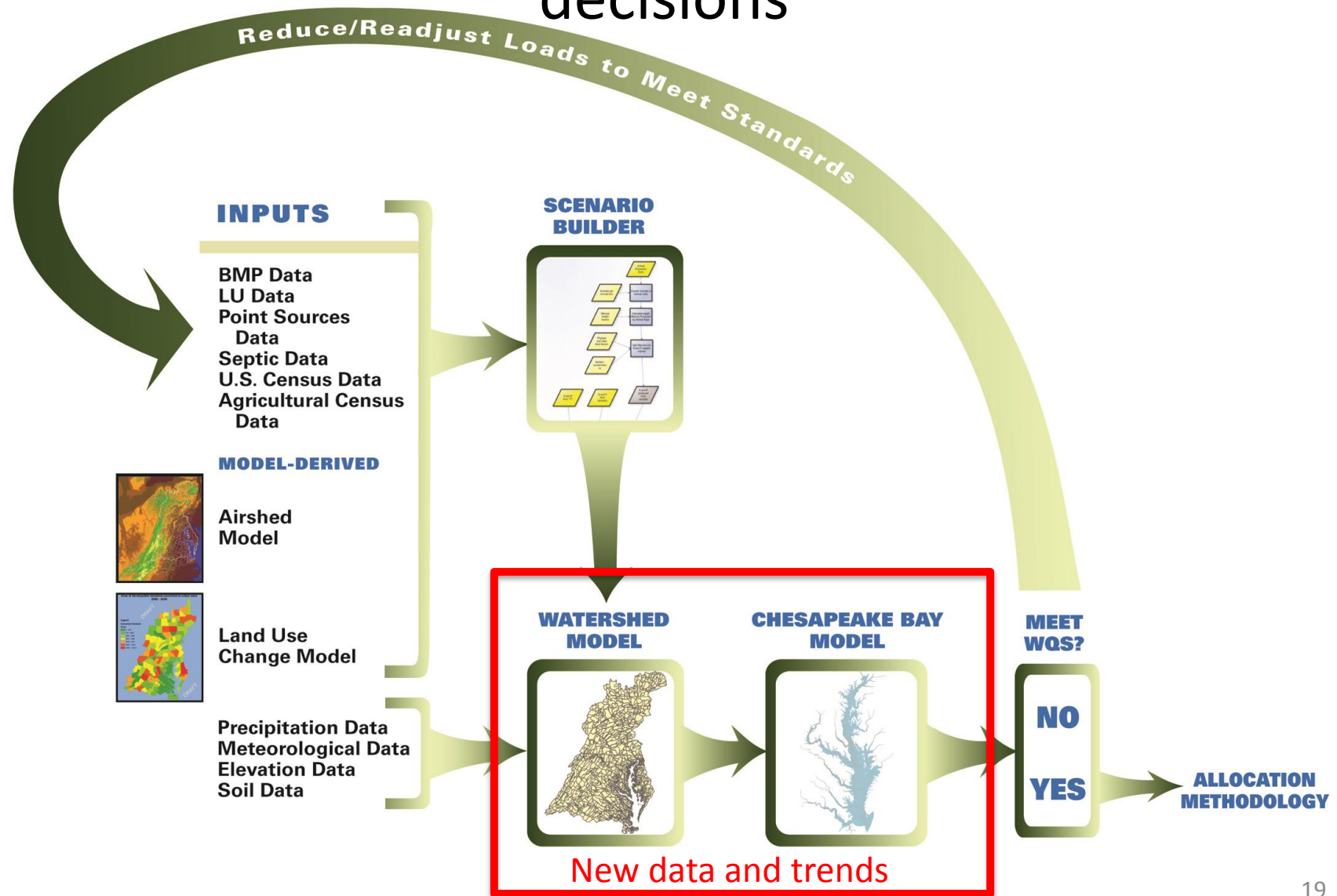
- The Susquehanna basin has a significant influence on Chesapeake Bay water quality
- The net reservoir trapping capacity is near zero
- Loss of trapping capacity will have more effect on the sediment and phosphorus than nitrogen
- New information available for factoring in the influence of particulate nutrients on Bay WQ
- Loss of reservoir trapping impacts the ability to achieve the Bay TMDL water quality goals under current strategies, but not yet fully quantified with new info
- The majority of nutrients are transported to the Bay during moderately high flow periods

**HOW WILL THIS INFORMATION FACTOR
INTO JURISDICTION BAY TMDL
ALLOCATIONS**

The allocation principles applied in the Bay TMDL determined the cap and level of responsibility

- Attain WQ Standards
- Areas that contribute the most to the Bay water quality problems must do the most to resolve those problems (on a pound-per-pound basis).
- All tracked and reported reductions in nitrogen and phosphorus loads are credited toward achieving final assigned loads.
- Special considerations for upstream states

Models are central to allocations and are being updated to reflect new science and inform policy decisions



Water quality standards remain the same as in the Bay TMDL and are used to set the overall cap

SAV

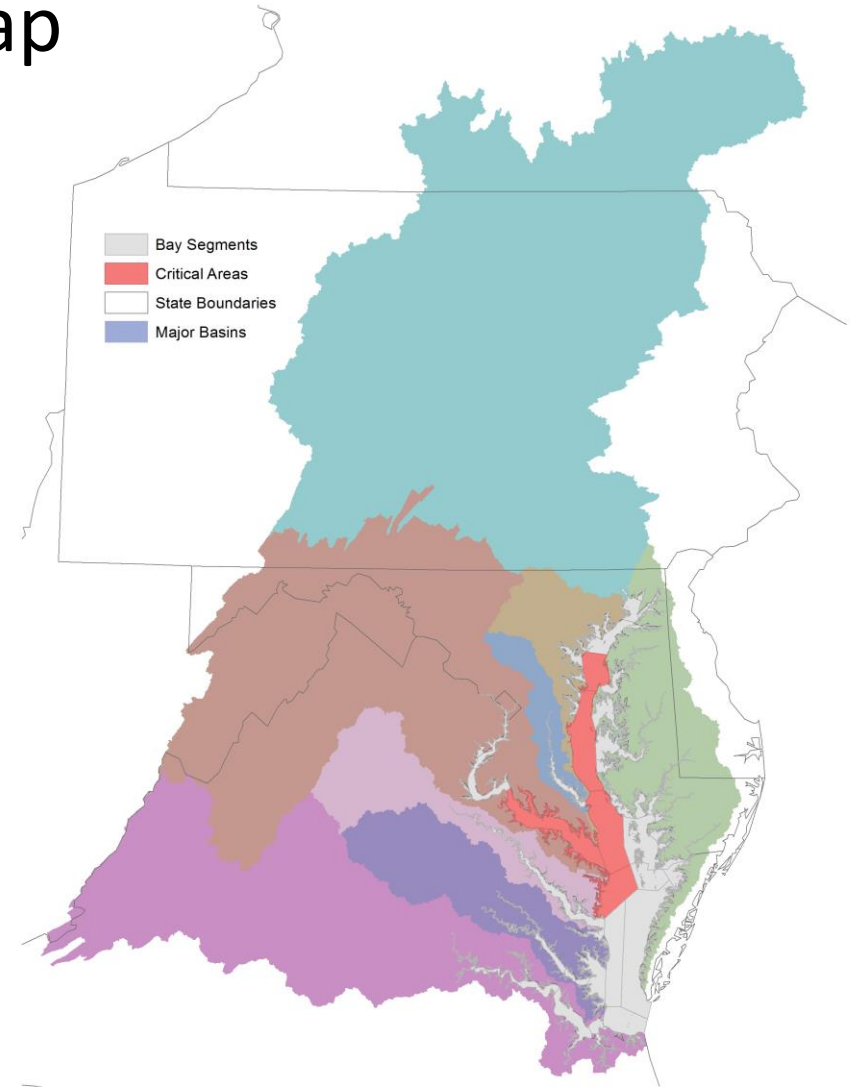
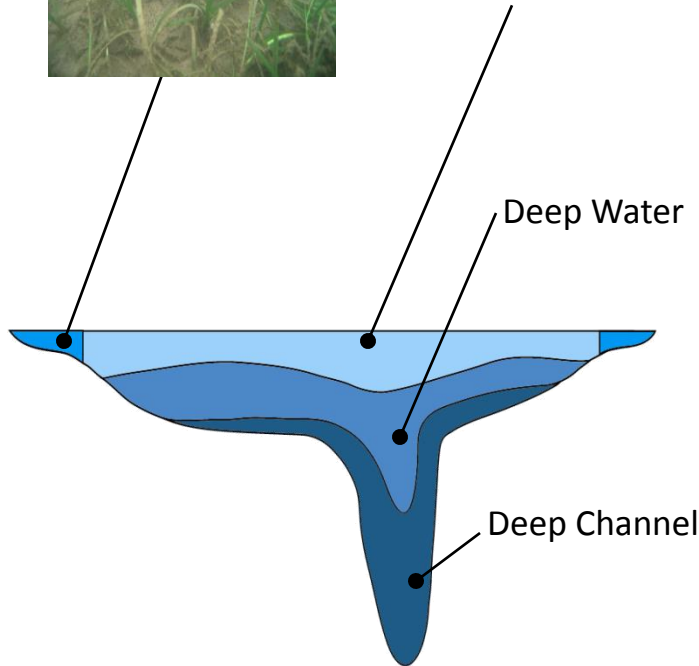


Migratory Fish Spawning & Nursery Areas

Shallow and Open Water Areas

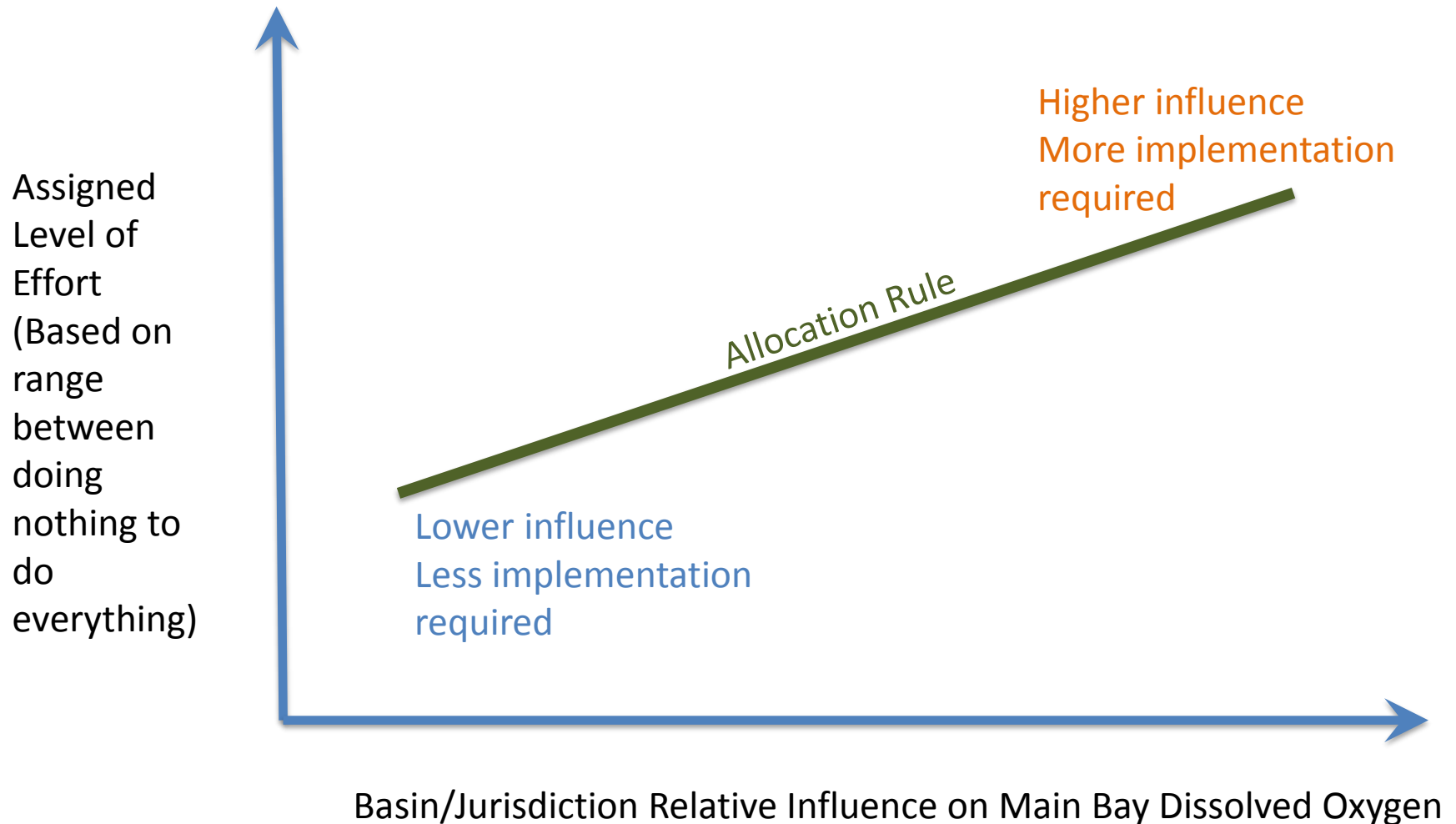
Deep Water

Deep Channel

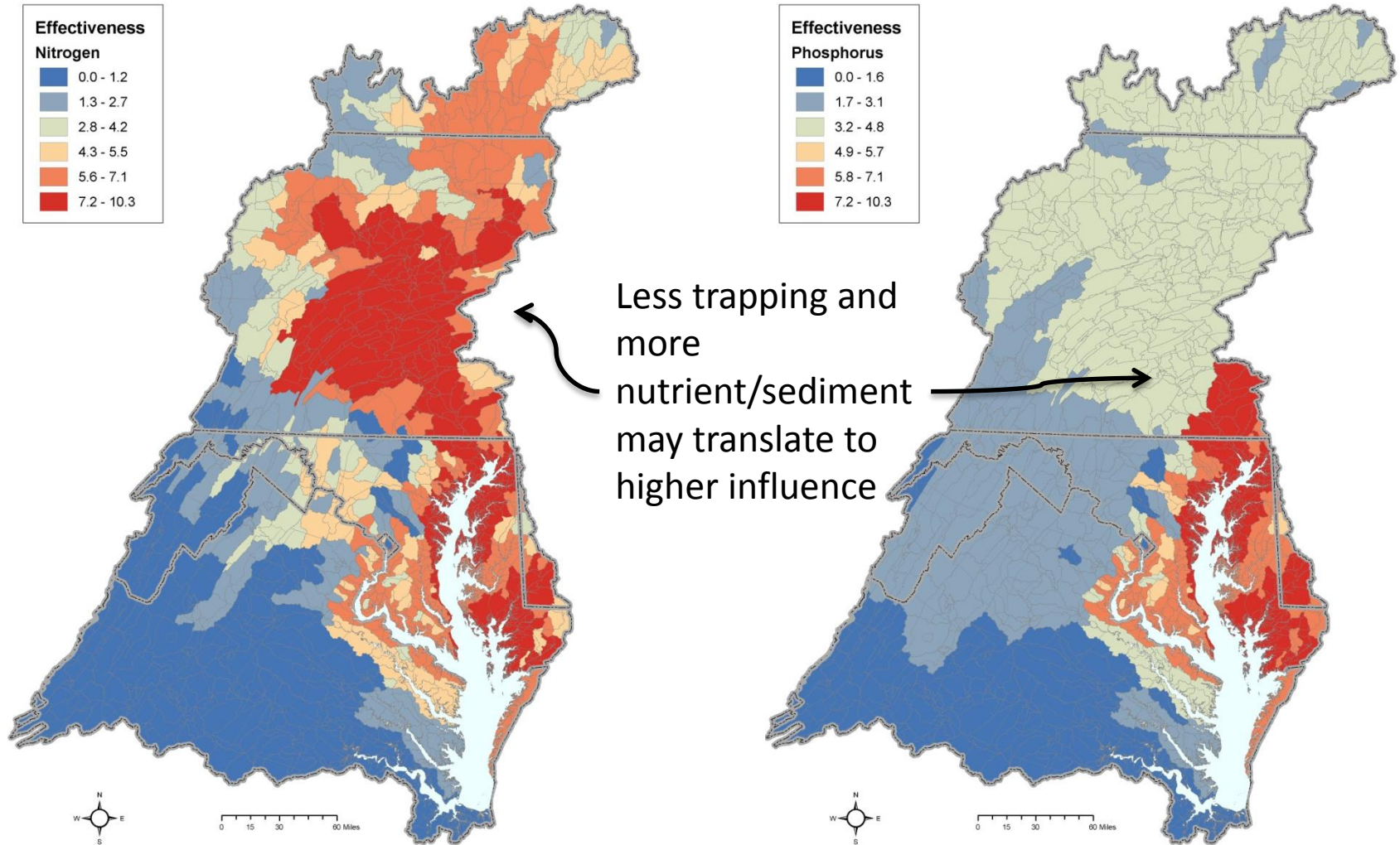


Allocation Responsibility Rules were used to divide the cap among the jurisdictions

(Informed by Models)

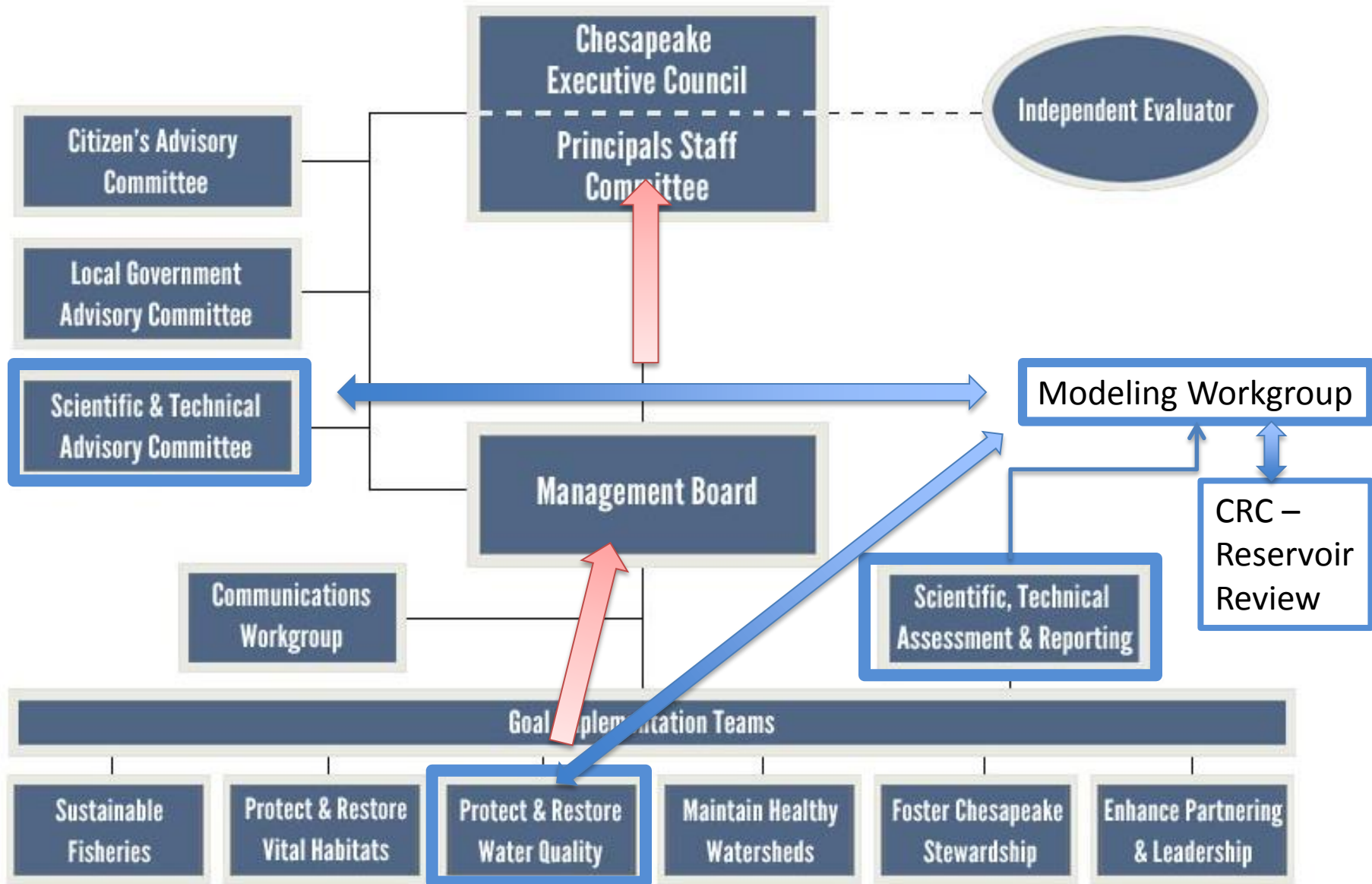


Relative Influence on Main Bay Dissolved Oxygen Changing as a result of Reservoir Infill



**DECISION MAKING, TIMELINE, NEXT
STEPS**

Accountability and decision making



Timeline (2016)

- Reservoir system state of the science webinar/paper this fall
- Modeling tools to reflect trends by fall and fully developed, with new information, by early winter
- STAC and CRC review of modeling tools this fall and winter
- In Oct, WQGIT meeting to approve the Phase III WIP jurisdiction planning target method for presentation to Management Board
- Policy for factoring in the impact of infill to targets this winter

Timeline (2017)

- January – March: final calibration of Phase 6 modeling system by the modeling team (through Modeling WG)
- March –May: fatal-flaw review of Phase 6 modeling system by Bay Partnership
- June: Partnership release of final Phase 6 modeling system and EPA releases draft Phase III WIP planning targets that factor in the Conowingo infill