

An aerial photograph of a large body of water, likely a lake or bay, surrounded by dense, forested land. Numerous sailboats are visible on the water, particularly in the lower right quadrant. The land features several peninsulas and islands, with some areas showing signs of development or clearing. The overall scene is serene and scenic.

The Midpoint Assessment

Presentation to the Modeling WG

October 2, 2012

What is the Midpoint Assessment?

➤ Ultimate Goal:

- Ensure Partnership has all practices in place by 2025 to attain water quality standards in the Bay

➤ How?

- Take stock of latest science, data, tools (including models), BMPs, and lessons learned from progress to date
- Findings from Midpoint Assessment will help jurisdictions to prepare for the Phase III WIPs, which will guide milestones and implementation between 2018 and 2025

Working Draft of Guiding Principles (see attachment; subject to change)

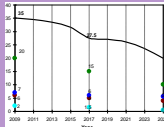
1. Keep the focus on implementation and maintain stable tracking and reporting through 2017 (parallel tracks)
2. Enhance decision support and assessment tools to enable successful engagement of local partners
3. Incorporate verification of practices into existing accountability tools and reporting protocols
4. Address emerging issues that may impact current strategies and future plans
5. Prioritize midpoint assessment actions and adaptive management to ensure Phase III WIPs meet water quality goals

How Does the Midpoint Assessment Relate to the Accountability Framework?

1. Watershed Implementation Plans identify nutrient and sediment targets that meet water quality standards.



2. 2-Year Milestones



with programmatic and pollutant reduction commitments

3. Track and Assess Progress



implementing WIPs and milestones

4. Federal Actions



if insufficient
Watershed Implementation
Plans or 2-year milestones

Framework Informed by Decision Support and Assessment Tools

1. Watershed Implementation Plans identify nutrient and sediment targets that meet water quality standards.



CAST

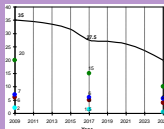
Watershed Model

Land Change Model



2. 2-Year Milestones

with programmatic and pollutant reduction commitments



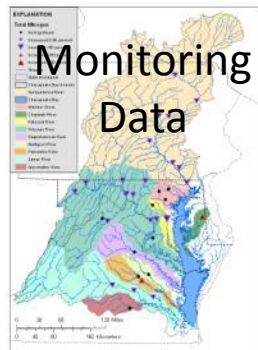
3. Track and Assess Progress

implementing WIPs and milestones



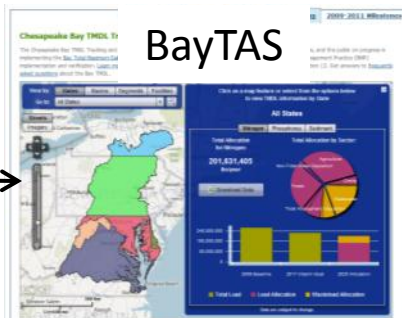
4. Federal Actions

if insufficient Watershed Implementation Plans or 2-year milestones



Flow-adjusted trends for total nitrogen for 31 sites in the Chesapeake Bay Watershed, 1995-2010.

NEIEN
Environmental Information
exchange
Network



A Parallel Approach

Moving Forward on Parallel Tracks

2010

Implementing 60% by 2017

- 2010: Phase I WIPs
- 2011 & 2012: Phase II WIPs
- 2012-2013 Milestones
- 2014-2015 Milestones
- 2016-2017 Milestones
- Annual progress runs
- Tracked using Watershed Model Phase 5.3.2, with some refinements to include innovative new BMPs as possible (including from panels)

2017

Midpoint Assessment

- 2012: Gather Partnership input and set priorities
- As directed by WQGIT, gather data, develop methods
- As appropriate, refine and test tools
- Set planning targets for Phase III WIPs
- Develop Phase III WIPs and 2018-2019 milestones

The WQGIT to Answer

- How are we addressing adaptive management?
- What barriers to implementation need to be addressed to help meet the 60% by 2017 goal or in the midpoint assessment for the Phase III WIPs?
- Guiding Principles – What are they and how will they be applied?
- What are the Workgroups' priorities for the midpoint assessment?
 - Do these priorities address the barriers to implementation?
 - How do they relate to the Guiding Principles?
 - Roughly speaking, how much of a difference would it make in load, expected reductions, or implementation decisions in each state? (speaking generally)
 - What resources and how much time would it take to address this priority?
 - Are there downsides to this priority, such as generating confusion with changing numbers?
 - Based on the above, does the WQGIT agree this should be address in the midpoint assessment?
 - If yes, what are the next steps, who is taking them on, and by when?
- What does the WQGIT need to communicate to the PSC?
- How should the WQGIT communicate issues related to the midpoint assessment to our partners and to the public?

Working Draft of Schedule (Dates Subject to Change)

- Input for the midpoint assessment from WQGIT, WQGIT Workgroups, Modeling Workgroup, others
 - Identification of topics (August 2012)
 - Priorities (September 18, 2012)
- Partnership development of Guiding Principles:
 - August and September: Discussion and feedback solicited from WQGIT
 - September 12: Discussion and feedback solicited from Management Board
 - September 27: Deadline for Management Board comments on Principles
 - October, TBD: Introduce Guiding Principles to PSC
 - Key question: will these Principles help the Partnership set priorities?
- October 9 WQGIT call:
 - Share updated Guiding Principles
 - WQGIT approval of October 22-23 agenda
- October 15: Materials available for October 22-23 meeting
- WQGIT Meeting to set priorities, flesh out schedule and develop work plan for midpoint assessment (October 22-23, 2012)
 - Use of draft versions of Guiding Principles to scope extent of the midpoint assessment
- PSC approval of the Guiding Principles (Winter 2013)

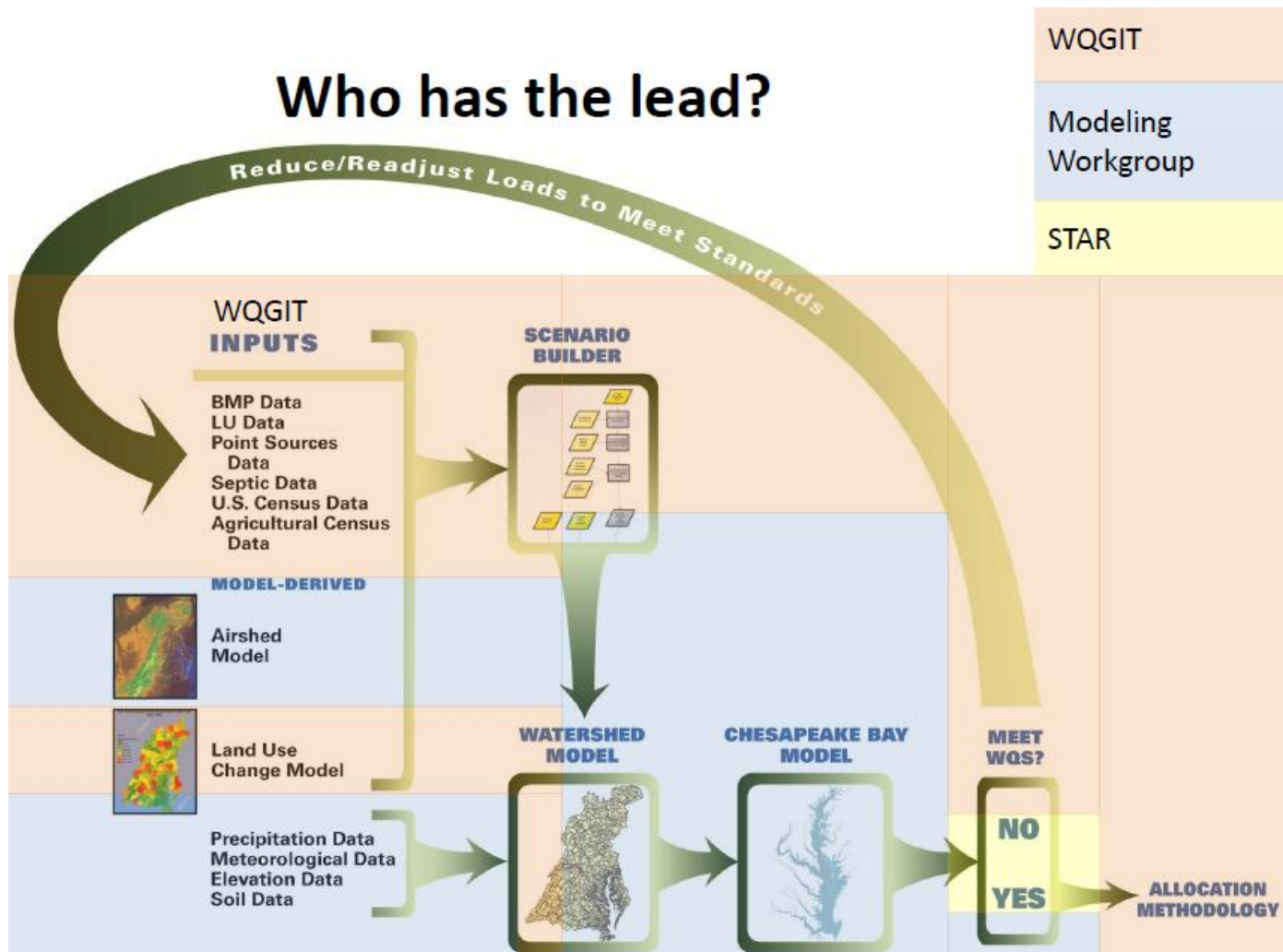
Who Is the Lead?

Deliverable	Proposed Lead
Midpoint Assessment Priorities	Water Quality Goal Implementation Team (WQGIT)
Midpoint Assessment Guiding Principles	Principles' Staff Committee, with input from WQGIT and Management Board
Midpoint Assessment Deliverables	CBP Partnership. Specific roles for Workgroups, Modeling Team, etc.
2-Year Milestones	Bay Jurisdictions, Federal Agencies
Phase III Watershed Implementation Plans	Bay Jurisdictions, with input from local partners
Any Possible Revisions to Bay TMDL	U.S. Environmental Protection Agency

Note: Partnership members in addition to the lead may contribute to deliverables

Technical Roles

Who has the lead?



Possible Agenda Items for October 22-23 Meeting

- Stage-setting questions:
 - What barriers to implementation need to be addressed to help meet 60% by 2017 goal and/or in the midpoint assessment for the Phase III WIPs?
 - Revisit answers to other upfront questions discussed today, as needed
- Discuss Workgroups' priorities
 - Panel of Workgroup Chairs present priorities
 - WQGIT members discuss whether and how to move forward with these priorities (see next slide)
- What does the WQGIT need to communicate to the PSC?
- How should the WQGIT communicate issues related to the midpoint assessment to our partners and to the public?

Likely WQGIT Discussion Process

- Do priorities address barriers to implementation?
- How do the priorities align with the Guiding Principles?
- Roughly speaking, how much of a difference would it make in load, expected reductions, or implementation decisions in each state? (speaking generally)
- What resources and how much time would it take to address this priority?
- What are the implications of not addressing the issue?
- Based on the above, does the WQGIT agree this should be address in the midpoint assessment?
- If yes, what are the next steps, who is taking them on, and by when? Provide dates by which workgroups, others would come back to WQGIT with more fleshed out work plans



Top Priorities from the WGs

- See handout

Next Steps for Modeling WG

- Did we identify our priority revisions?
- What about the multiple model idea presented from Gary in the Spring?
- How can the modeling workgroup best engage the midpoint assessment process?
- What are our top priorities moving forward?
Send to WQGIT by Friday, October 5th for
October 22-23 WQGIT face to face meeting.