

# **Social Science Action Team: Incorporating Social Science into the Chesapeake Bay Program Partnership**



**SCIENCE, TECHNICAL ASSESSMENT & REPORTING  
NOVEMBER 5, 2012 TEAM MEETING  
ANNAPOLIS, MD**

# Main Discussion Points for Today

2

- Overview of Purpose & Scope, including Mission Statement and Membership
- Areas of Focus
- Short- and Long-Term Actions
- Actions to Date

# BACKGROUND:

## Across the Watershed - Research Needs\*

3

- Behavior-change research
  - What drives decision-making; enhancing community engagement; understand local values and knowledge
- Economic research
  - Cost-benefits and cost-effectiveness estimates
- Research on the cultural landscape
  - Measuring (conflicting) expectations; social dynamics influencing community values
- Research to address communication barriers
  - Develop indicators to measure “success”; multiple definitions of “success”
- Research to understand institutional change
  - Dynamics of political environment and its impact on community

# BACKGROUND:

## Constraints to Integrating Social Science\*

4

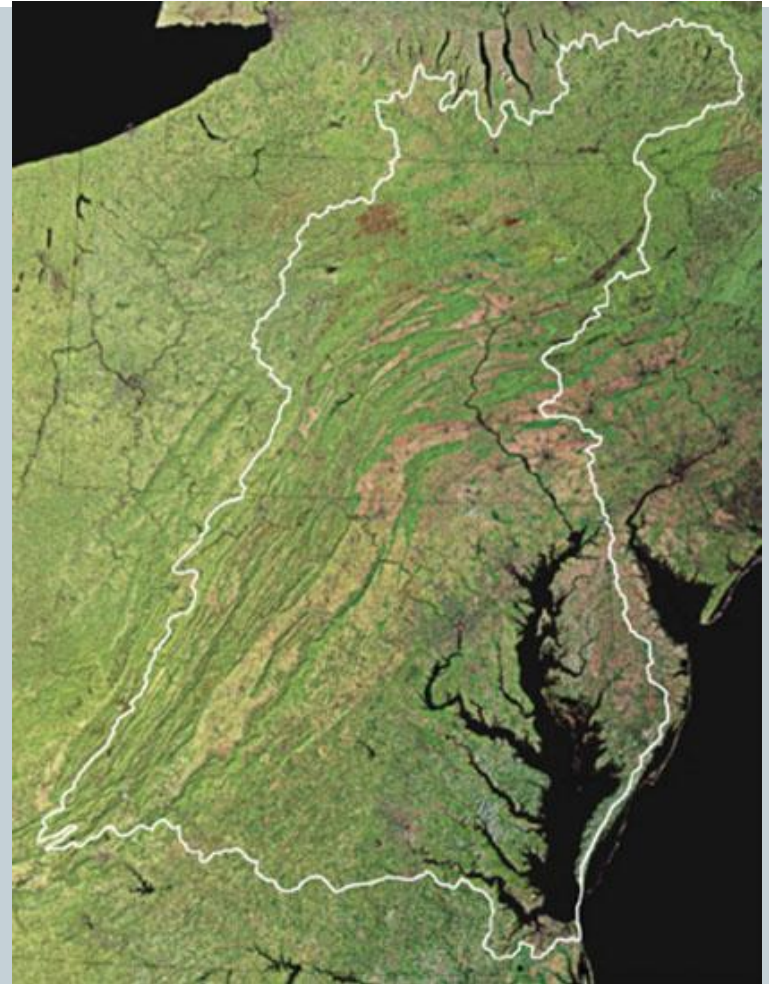
- Lack of access to tools and research
  - Lack of self-promotion and knowledge of how to use social science tools and access experts
- Institutional constraints
  - Current thinking too traditional; first programs to be cut
- Barriers of scale
  - How to allow for bottom-up community involvement in restoration
- Communication
  - Competing language by managers and social scientists



# Purpose of Action Team

5

- **Increase awareness** of the social science disciplines
- **Demonstrate value of social science** to Bay Program Partnership
- **Build off previous social science analyses** - there's already a lot happening in the watershed!

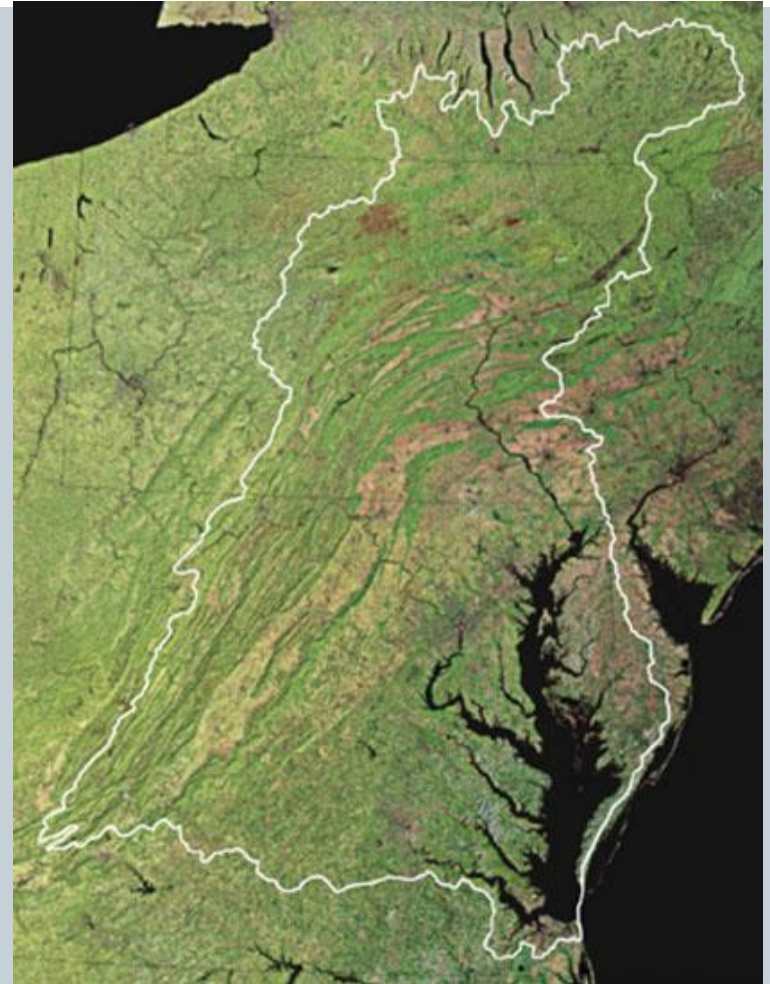




# Purpose of Action Team

6

- **Bridge the gap** between natural and social sciences
- **Integrate social science methods and research** into the Bay Program's priorities and decision making framework







# Mission Statement

7

**To identify, evaluate, and develop opportunities for applying social science methods and research findings into the Chesapeake Bay Program Partnership.**





# Scope & Duration of Action Team

8

- Comprised of 10-12 Social Scientists representing the:
  - Bay Jurisdictions
  - Chesapeake Bay Program Office
- One year term
  - Utilizing an Adaptive Management Approach
    - ✦ Action Team to conduct self study throughout this period to identify key successes and areas for improvement
    - ✦ Based on self study, reevaluate key objectives and determine next steps at end of one-year period
    - ✦ Report back to Management Board on findings and recommendations for possible transition to more permanent inclusion in Bay Program structure



# Overarching Areas of Focus

9

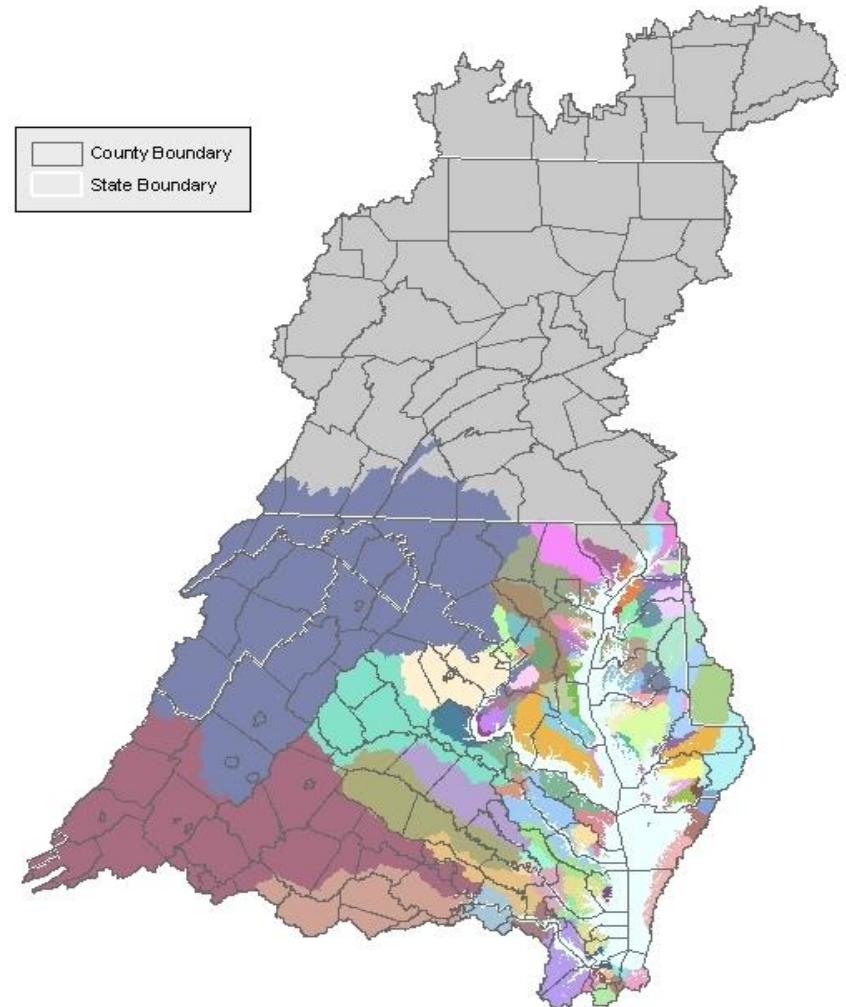
- Identify opportunities within Bay Program that show how social science research can help achieve goals
- Demonstrate how social science has made a difference in the environmental field (e.g. changing behavior)
- Integrate social science research and findings into Bay Program



# Short Term Actions (w/in Year 1)

10

- Assess social science needs/current research in GITs
  - Articulate priorities, actions, desired outcomes
  - Identify overarching social science themes
  - Identify opportunities that benefit from tech assistance, and link with social science expertise





# Short Term Actions (w/in Year 1)

11

- Facilitate social science speaker series
  - Identify high profile case studies that demonstrate value of social science
  - Particularly, applied research in Chesapeake Bay that could assist with water quality improvements, habitat restoration, fisheries management, etc.
  - Connects research with Bay Program priorities
- Explore opportunities to access/acquire additional funding for implementing social science recommendations

# Actions to Date

12

- Response to STAC's Social Science Workshop Report
- Presentation of Social Science Action Team to Management Board & Science and Technical Advisory Committee
- Solicitation of Action Team Members & Convening of Action Team
- Confirmation of Mission & Scope and Short Term Actions
- Initial Engagement with Goal Implementation Teams

# Longer Term Actions (Post-Year One)

13

- Synthesize existing and ongoing social science research and how it could be applied to Bay Program
  - Effectively utilizing social science methods and principles
- Initiate social science research effort in priority watersheds
- Develop social science online resource directory

## Chesapeake Bay TMDL Watershed Implementation Plan



District of Columbia  
Department of the Environment  
November 29, 2010

## Pennsylvania Chesapeake Watershed Implementation Plan

Prepared by the  
Pennsylvania Department of Environmental Protection  
November 29, 2010

Edward G. Rendell, Governor  
Commonwealth of Pennsylvania  
John Hanger, Secretary  
Department of Environmental Protection

## Delaware's Phase I Chesapeake Bay Watershed Implementation Plan



Assembled By:  
Delaware's Chesapeake Interagency Workgroup

## COMMONWEALTH of VIRGINIA Chesapeake Bay TMDL Phase I Watershed Implementation Plan *Revision of the Chesapeake Bay Nutrient and Sediment Reduction Tributary Strategy* November 29, 2010

SUBMITTED FINAL 11/30/10

## MARYLAND'S PHASE I WATERSHED IMPLEMENTATION PLAN FOR THE CHESAPEAKE BAY TOTAL MAXIMUM DAILY LOAD

Date:  
December 3, 2010



## West Virginia's Chesapeake Bay TMDL Watershed Implementation Plan

A product of the  
West Virginia WIP Development Team



In cooperation with the  
WV Department of Environmental Protection  
WV Conservation Agency  
WV Department of Agriculture  
Submitted to the Chesapeake Bay Program  
November 29, 2010

WV Phase I Chesapeake Bay Watershed Implementation Plan 11/30/2010 1 of 116

## Final Phase I Nutrient and Sediment Water Quality Improvement and Protection Plan

for  
*New York Susquehanna and Chemung River Basins  
and  
Chesapeake Bay Total Maximum Daily Load  
December 2010*

Prepared by: New York State Department of Environmental Conservation  
In collaboration with:  
New York State Department of Agriculture and Markets and  
Upper Susquehanna Coalition





# Thank you!



## QUESTIONS?

LUCINDA POWER

410-267-5722; [POWER.LUCINDA@EPA.GOV](mailto:POWER.LUCINDA@EPA.GOV)