



Wild Fishery



Aquaculture

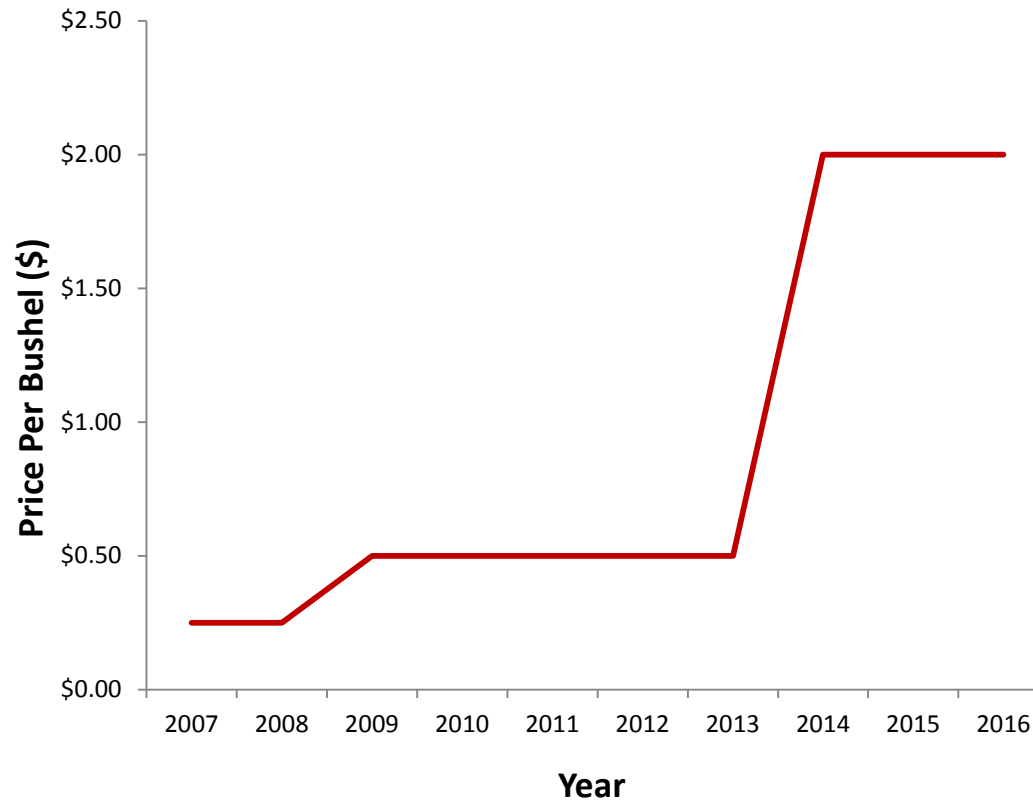


Large Scale Restoration



Citizen Group Restoration

Price DNR is Authorized to Pay for Fresh Shells



Sources of Oyster Shell



Shucking House

Photo by Astrid Riecken for The Washington Post



Dredged Shell



Mexican Shell

Alternate Substrates



Rock



Fossil Oyster Shell



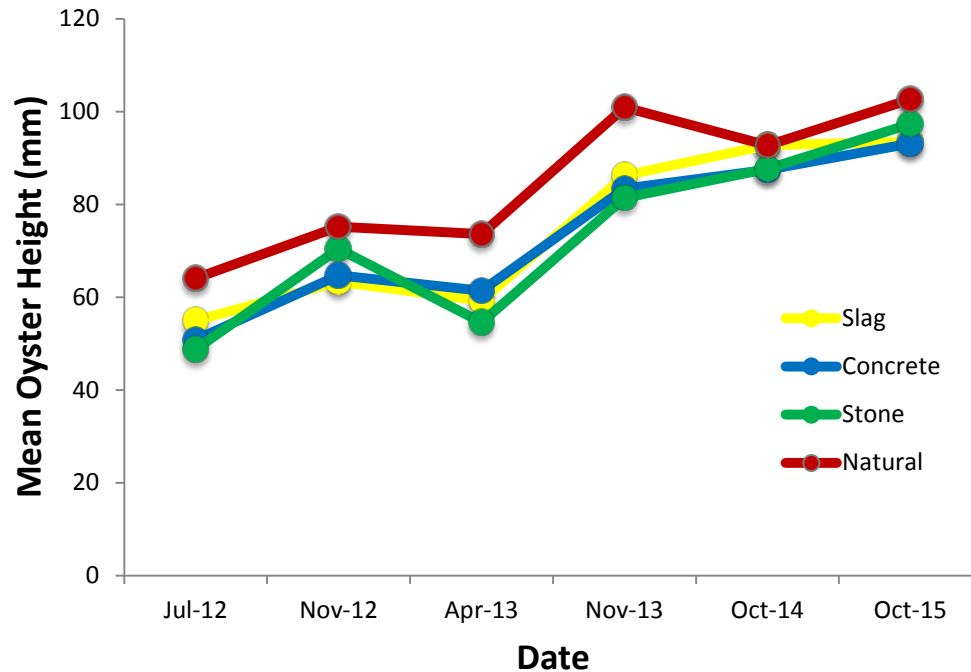
Mixed Shell



Fossil Mixed Shell

Growth Rates on Alternate Substrates

Severn River Alternate Substrate Sites
Oyster Height (mm)



Oysters planted on natural substrate are a year older, but growth rates are the same.

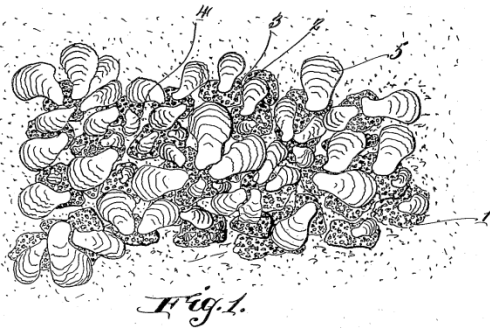
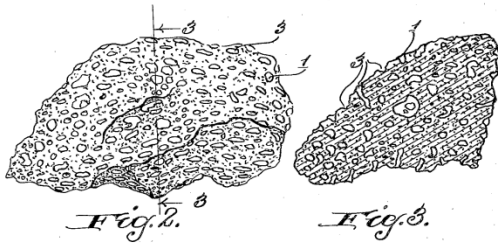
Data collected by Ken Paynter

Public Perception

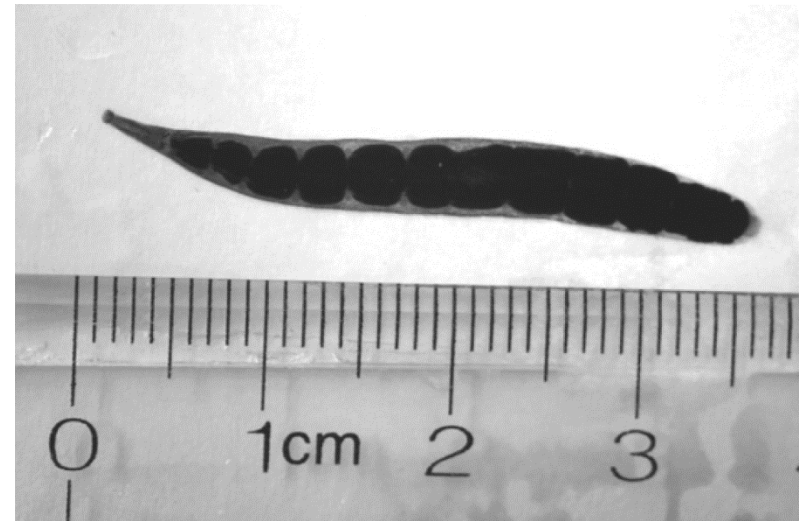
Aug. 8, 1933.

R. W. ROBERTSON
OYSTER CULTURE
Filed Sept. 14, 1932

1,921,945



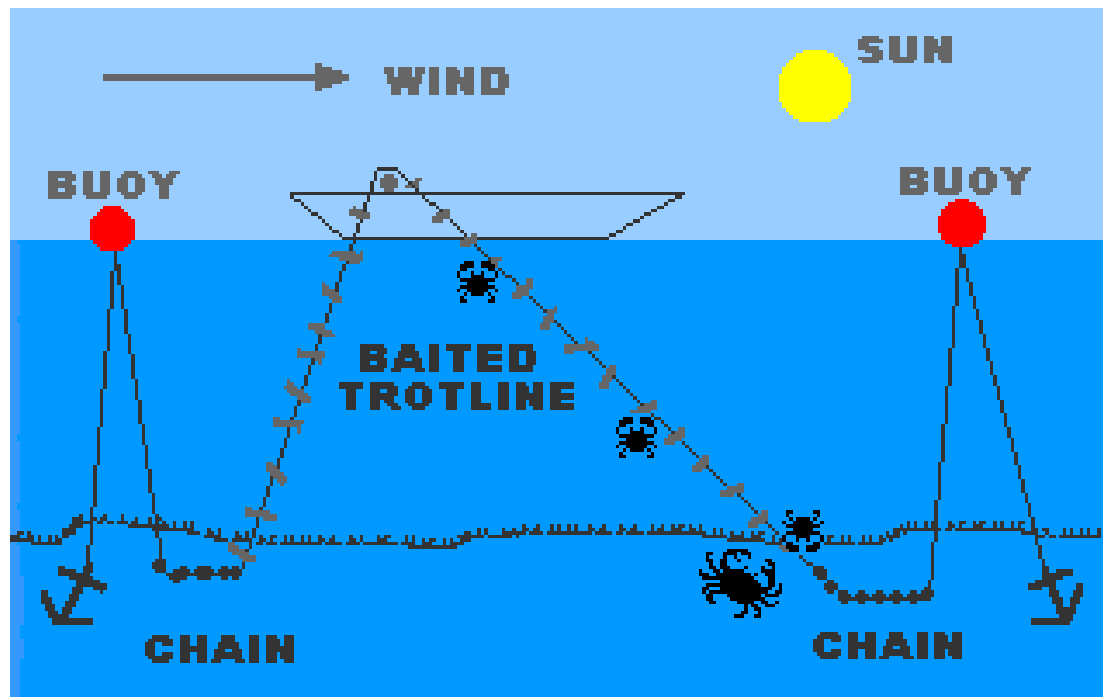
Witnesses
For R. W. Robertson
R. W. Robertson, Inventor
Edwin F. Samuels, Attorney



Common Crab Leech, *Myzobdella lugubris*
Photo from Faisal et al. 2011

Slag Spat Collector 1933

Potential User Conflicts



Crabbers Trot lining
Diagram from VIMS