



2024 Protected Lands Indicator and the Future of Protected Lands Data Collection

PLI: A brief history

- Long history and evolving
 - Tables (~2011)
 - GIS data (~2013/14)
- Big effort of data aggregation
 - Many people involved
 - Data corrections are slow, and it takes time for all jurisdictions to get resources needed to provide accurate and complete data.
- We know jurisdictions are working on improving their own data collection process.



Past Indicator Issues

USGS employees have cleaned jurisdiction data for use with the Protected Lands Indicator.

Data submitted not being in the suggested schema, or the required schema elements not being fully attributed.

Missing key data

Carrying over of past issues in the indicator code

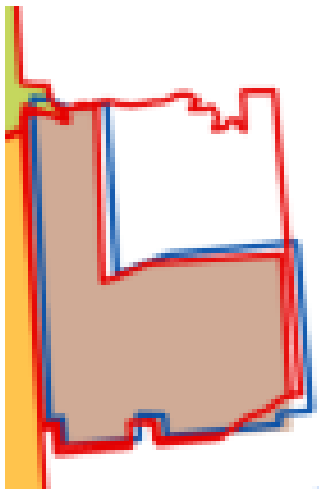
Example: Own_Type not completely attributed

Example: Local lands missing in some jurisdictions data

2022 Indicator

2022

- State provided input
- USGS PADUS (4.1)
- Legacy PLI (2022)



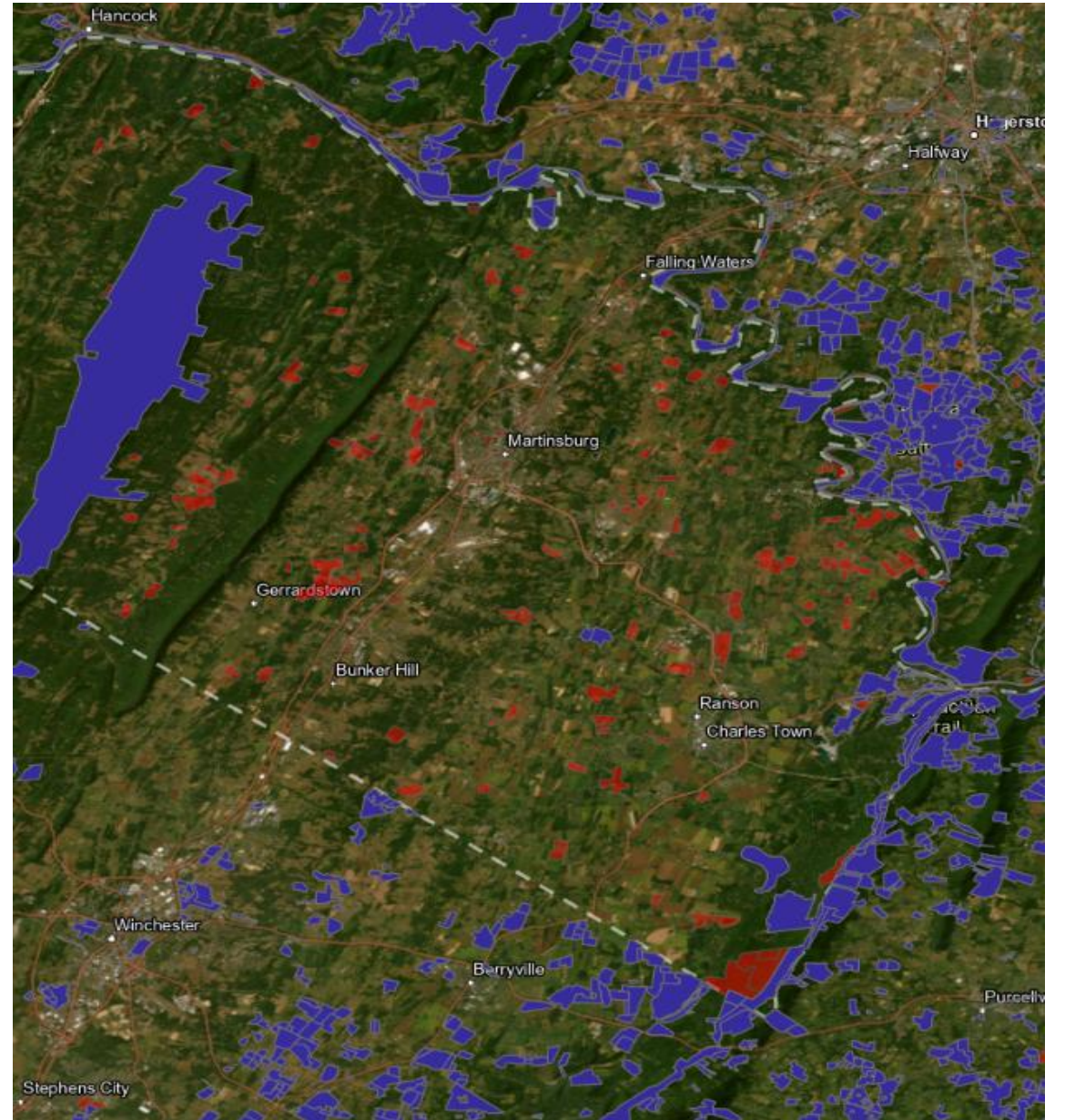
Conflicting boundaries and overlapping properties.

Feedback from State Practitioners

- Challenges correcting data in PADUS
- Boundary corrections from jurisdictions were not reflected in the data.
- State boundaries were not correct.

2024

- State provided input
- USGS PADUS (4.1): Only for Federal Lands
- ~~Legacy PLI (2022)~~



2024 Edits to the methods

State provided
input

USGS PADUS
(4.1): Only for
Federal Lands

~~Legacy PLI
(2022)~~

Challenges with the Edits

We were missing some properties identified from The Nature Conservancy as protected

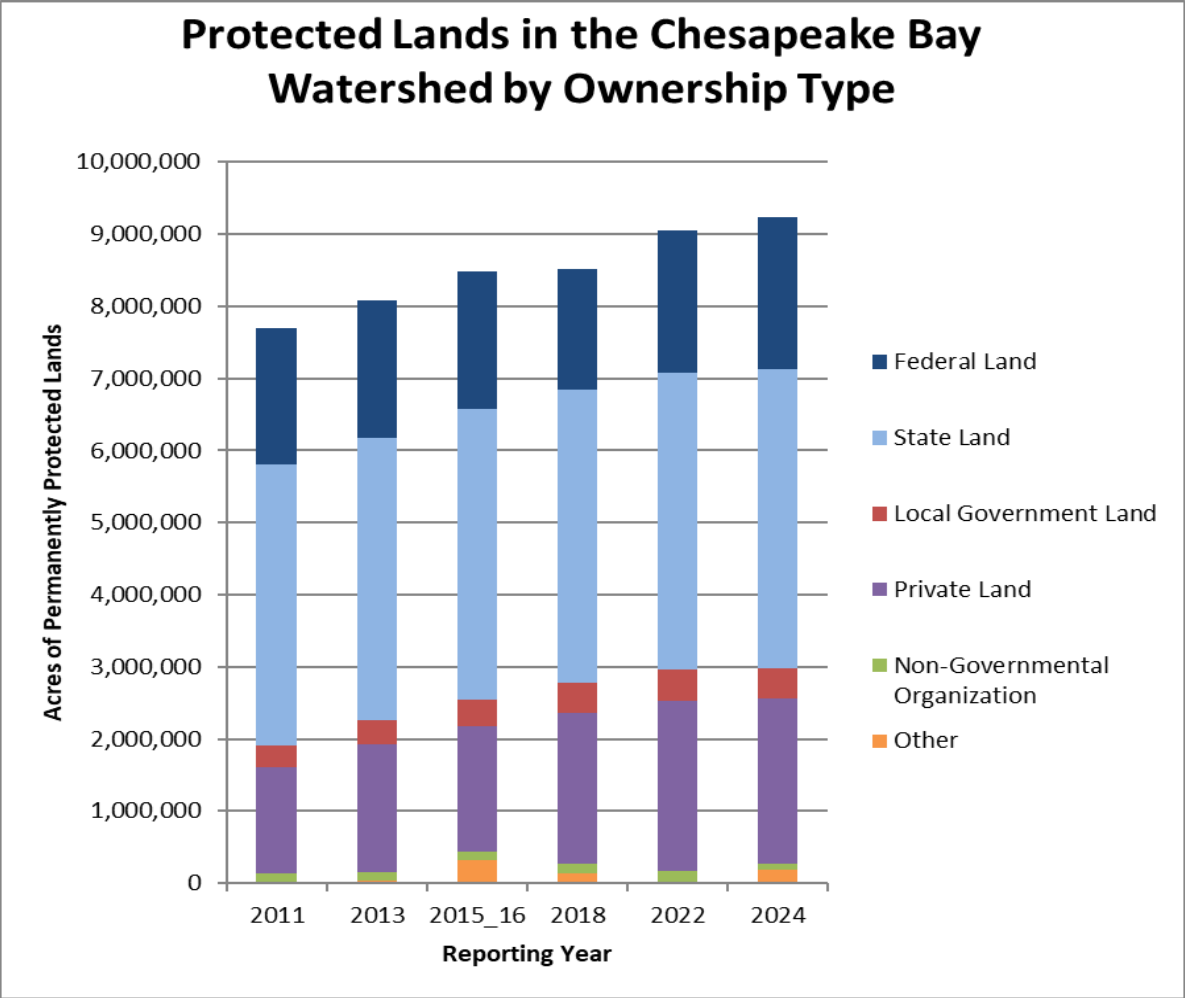
Properties from the National Conservation Easement Database were missing

No longer funded and everything is in USGS PADUS.

Iteration

- State provided input
- USGS PADUS (4.1): Only for Federal Lands
- ~~• Legacy PLI (2022)~~
-
- Adding data identified as missing
 - **Missing TNC data**
 - **NCED data (extracted from PADUS).**

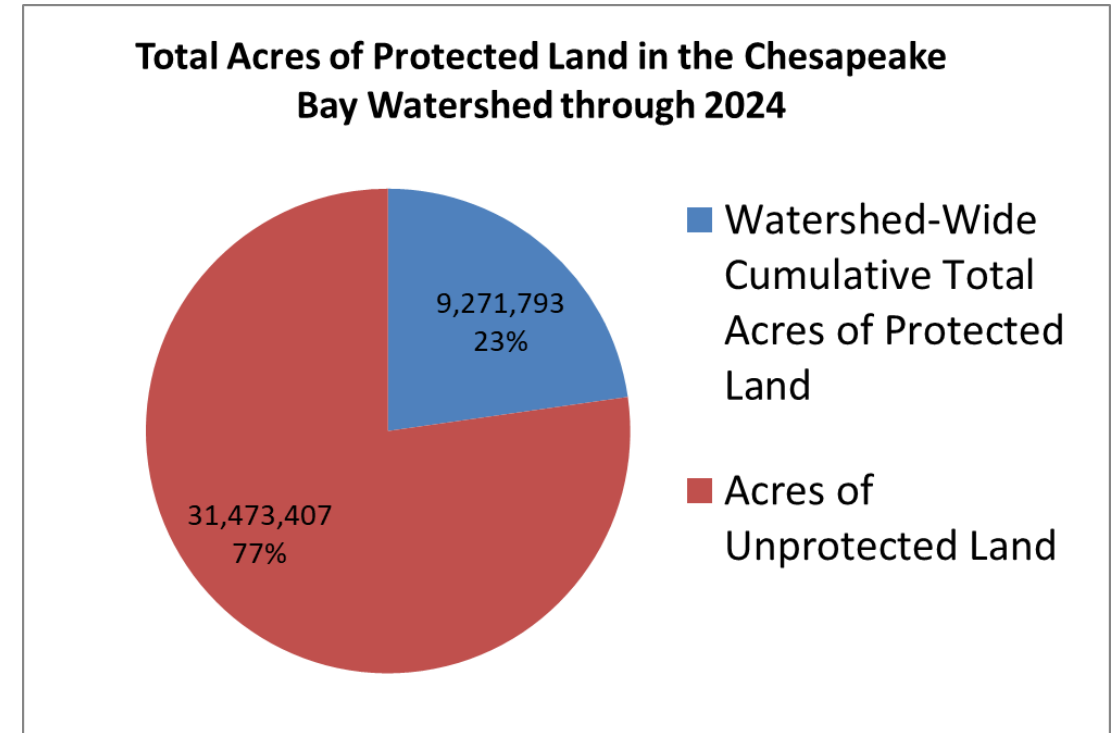
PLI 2024



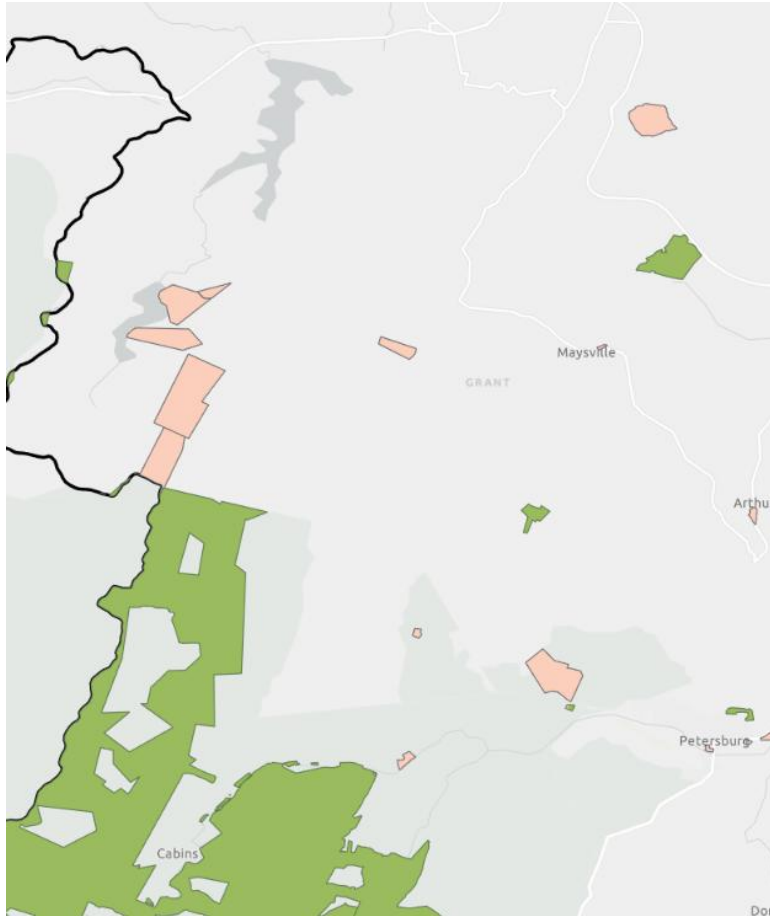
Cumulative Totals - by Ownership Type	2010	2024
Federal Land***	1,441,257	2,099,888
Local Government Land***	518,815	423,464
Non-Governmental Organization Land	154,111	91,117
Private Land (under conservation easement)	84,989	2,287,542
State Land***	4,609,088	4,149,920
Joint Land		35,601
Native American Land		2,260
Other		182,001
DE, NY, WV (combined)-2010	675,000	
Watershed-Wide Cumulative Total Acres Protected	7,483,261	9,271,793

Did we meet the GOAL?

Year	2010	2024
Watershed-Wide Cumulative Total Acres of Protected Land	7,474,811	9,271,793
Total Acres toward goal	NA	1,796,982
Lands Preserved (percent of goal achieved)	NA	90%



What we need from Jurisdictions?



Private Conservation reported in PLI 2022, no longer in PLI 2024 (WV).

- Commitment to review the data packages:
 - State provided data
 - Current version of PLI
 - PADUS 4.1 dataset for the state
 - PLI 2022
- Review both 2022 and 2024 data to ensure that what has been dropped is intentional.
- If something is missing, we ask that you provide us with updated data to ensure we have all protected lands accounted for.
- We will need feedback by August 22nd

Examples of Changes From PLI 2022 to PLI2024



NY: Local data no longer in State provided data.

Green: PLI 2024
Peach: PLI 2022



MD local data changes: County Fair Grounds, Bel Air Area Park.

What we need from Jurisdictions?

Jurisdiction participation in a GIS community of practice to work towards protected lands data standardization.

A need for data standardized to ensure that we can easily and accurately track protected lands in the watershed.

Community of Practice meetings will start in 2026.

