

QUARTERLY PROGRESS MEETING – August, 2019
Chesapeake Bay Program

Protected Lands Outcome GIT 5 Fostering Chesapeake Stewardship

*John Griffin, Chesapeake Conservation Partnership
Jonathan Doherty, National Park Service
Protected Lands Outcome Leads*

Through the Chesapeake Bay Watershed Agreement, the Chesapeake Bay Program has committed to...

By 2025, protect an additional **two million acres of lands throughout the watershed**—currently identified as high-conservation priorities at the federal, state or local level—including 225,000 acres of wetlands and 695,000 acres of forest land of highest value for maintaining water quality.

River's Bend along the James
(VA) protected in 2018



How You Can Help



Cookie Davis protected 2.3 miles of
Rappahannock riverfront (VA) in 2018

- On track - 68% of 2 million acre goal achieved
- Management Board Asks:
 - Sustain and grow public financing for land conservation
 - Identify new sources of financing for land conservation (e.g. private capital)



Capital Region Land Conservancy protected
the 871 acre Malvern Hill Farm (VA) in 2018

Learn

*What have we learned in the last
two years?*



Successes and Challenges



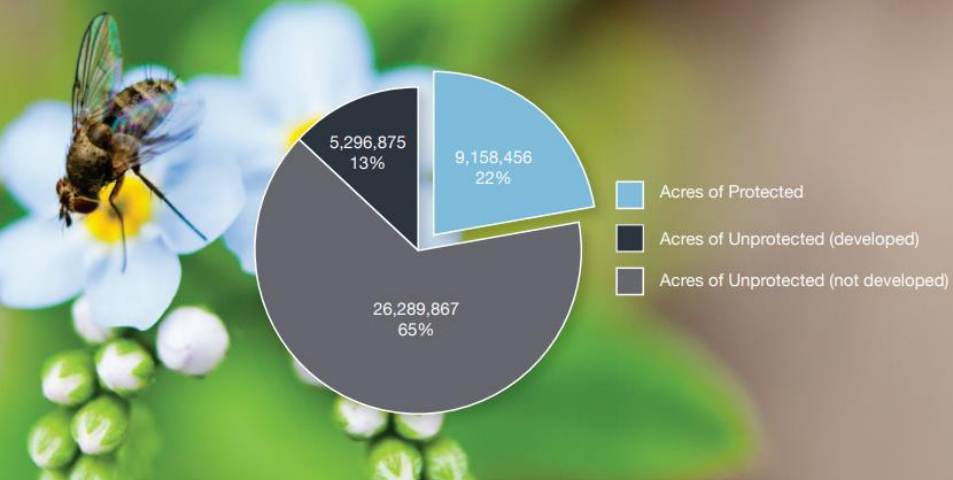
White Horse Mountain (WV) protected in 2018

- Progress is facilitated or constrained by availability of public and private sector financing sources.
- Sustaining and increasing funding levels critical to maintaining progress and meeting 2025 goal.
- Management actions provide information and education that supports public financing, policy and new financing sources.



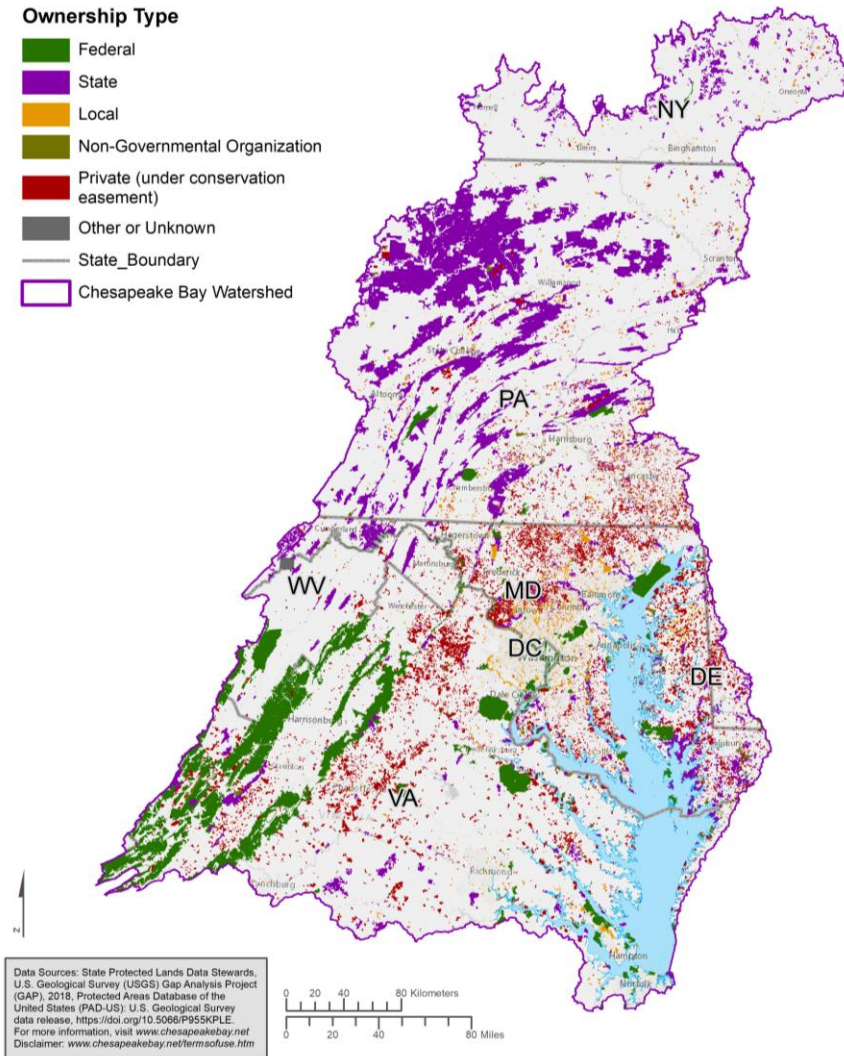
What is our Expected and Actual Progress?

TOTAL ACRES OF PROTECTED LAND IN THE CHESAPEAKE BAY WATERSHED THROUGH 2018



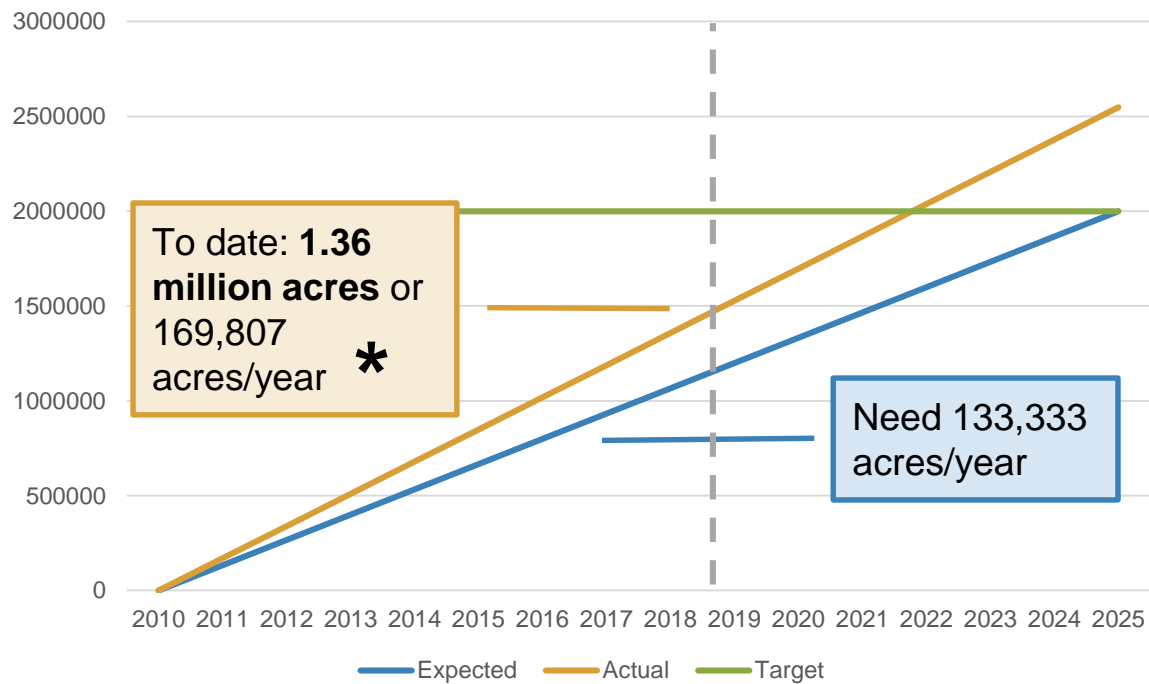
Ownership Type

- Federal
- State
- Local
- Non-Governmental Organization
- Private (under conservation easement)
- Other or Unknown
- State_Boundary
- Chesapeake Bay Watershed





What is our Expected and Actual Progress?



Big Flats Wildlife Management Area (NY) protected in 2018



On the Horizon



Hellam Hills Preserve (PA) protected in 2018

- **Fiscal:** Pressure for legislators and executives to reallocate state and federal land protection financing.
- **Policy:**
 - private capital investment
 - commercial scale solar and wind generation
 - infrastructure project mitigation impacts
 - land policy BMPs as part of Phase III WIPs
- **Scientific:** How will key trends/issues influence protection (climate, biodiversity, urban populations, development, etc.)



New 1,172 acre Wildlife Management
Area (MD) protected in 2018

Adapt

*How does all of this impact our
work?*

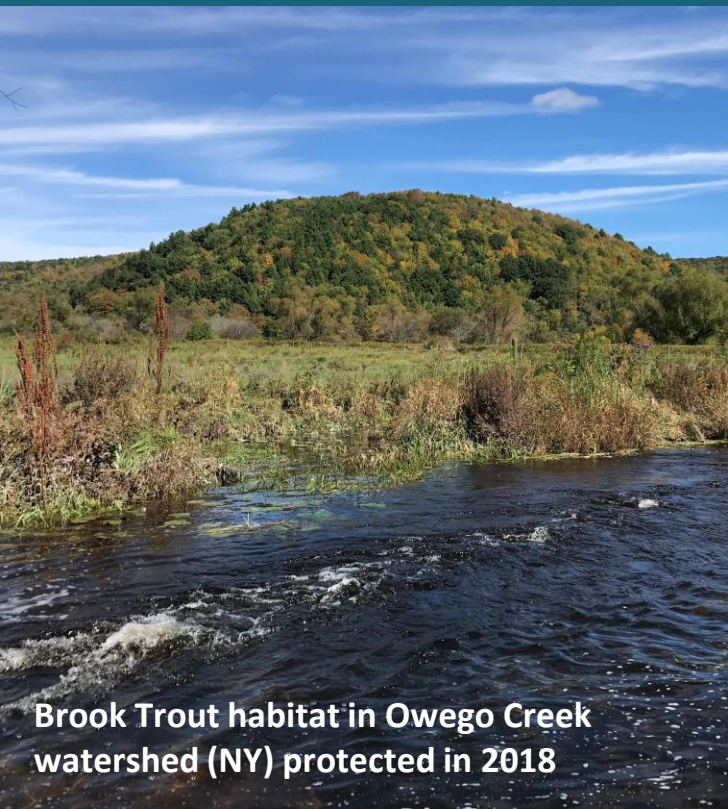


**Based on what we
learned, we plan to ...**



Michaux State Forest (PA) expanded in 2018

- Chesapeake Conservation Partnership working towards 2025 and longer-term goals beyond.
- Current core management of actions remain sound and on target



Brook Trout habitat in Owego Creek
watershed (NY) protected in 2018

Help

*How can the Management Board
lead the Program to adapt?*



Help Needed



Gatewood Preserve (MD) protected in 2018

- Invest in engaging new generation of conservationists
- Sustain and grow public financing for land conservation
- Facilitate new sources of financing for land conservation (e.g. private capital)
- Fund science and research on trends influencing land protection

QUARTERLY PROGRESS MEETING
Chesapeake Bay Program

Discussion

28,300 acre Harriet Tubman Rural Legacy Area created in 2018 to support land conservation (MD)