

QUARTERLY PROGRESS MEETING – July 2019
Chesapeake Bay Program



Brook Trout

Stephen Faulkner
U.S. Geological Survey
Chair, Brook Trout Action
Team

Through the Chesapeake Bay Watershed Agreement, the Chesapeake Bay Program has committed to...



Goal: **Vital Habitats**

Outcome: Restore and sustain naturally reproducing brook trout populations in Chesapeake headwater streams with an eight percent increase in occupied habitat by 2025.



How You Can Help



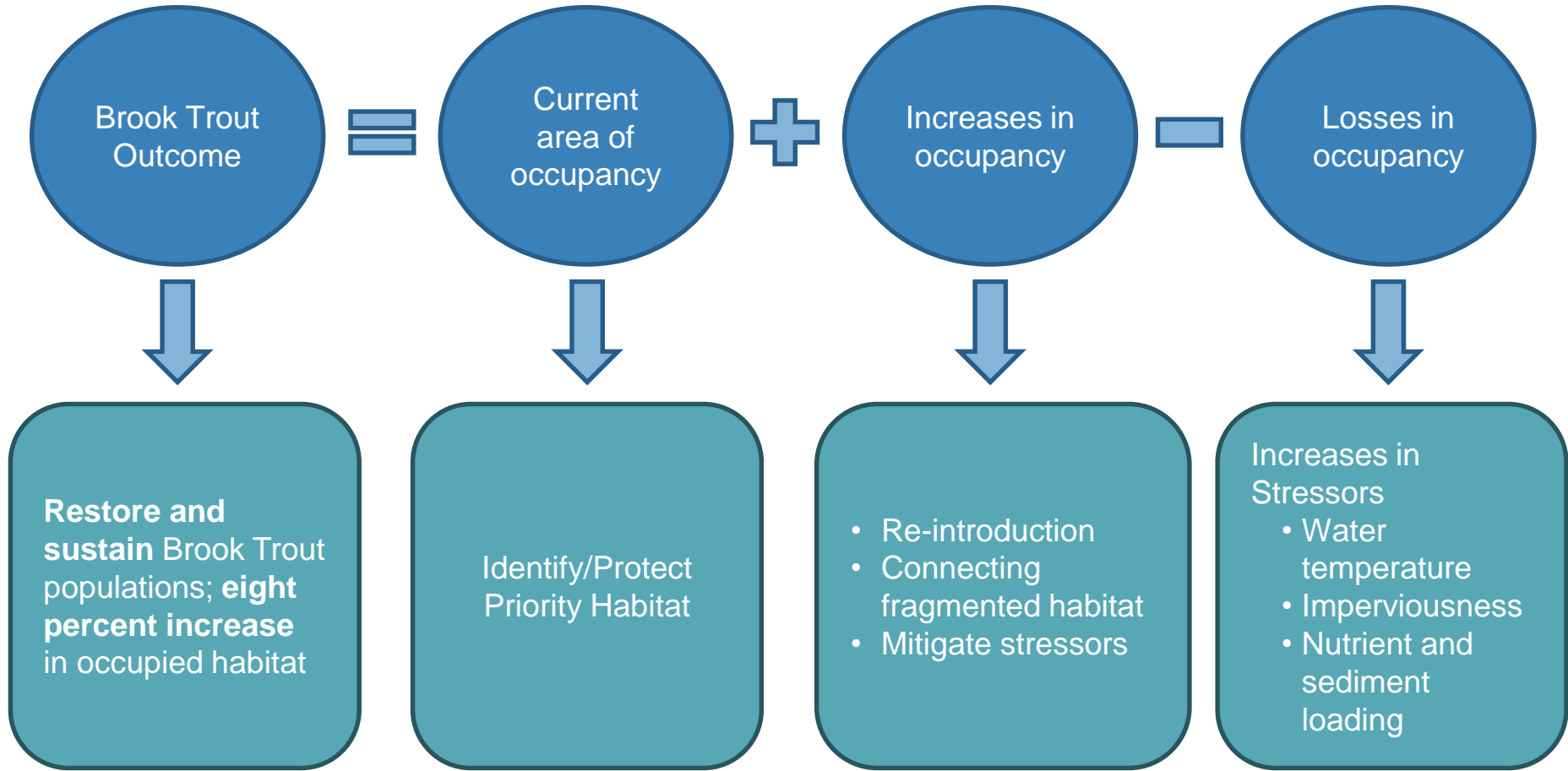
Summary:

- Likely not on the track, but looking for it.
- Both scientific and programmatic challenges remain.
- Need help with outreach, communication, and coordination.



Learn

What have we learned in the last two years?





Successes and Challenges

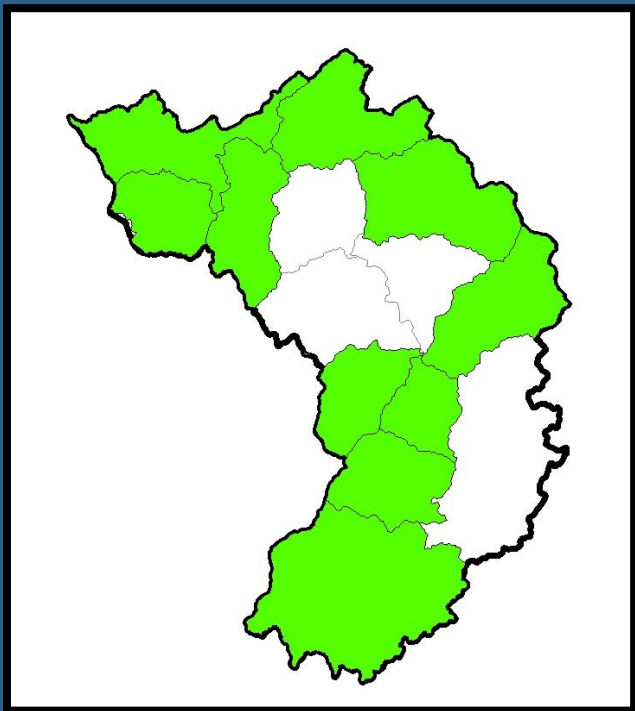
Science

- Stream water temperature remains the best predictor of brook trout occurrence (multiple models)
- Can't measure everywhere, so model temperature, evaluate drivers: % Forest/riparian cover, % imperviousness/agriculture, groundwater upwelling
- Need information at decision-relevant scales, generally highest resolution possible

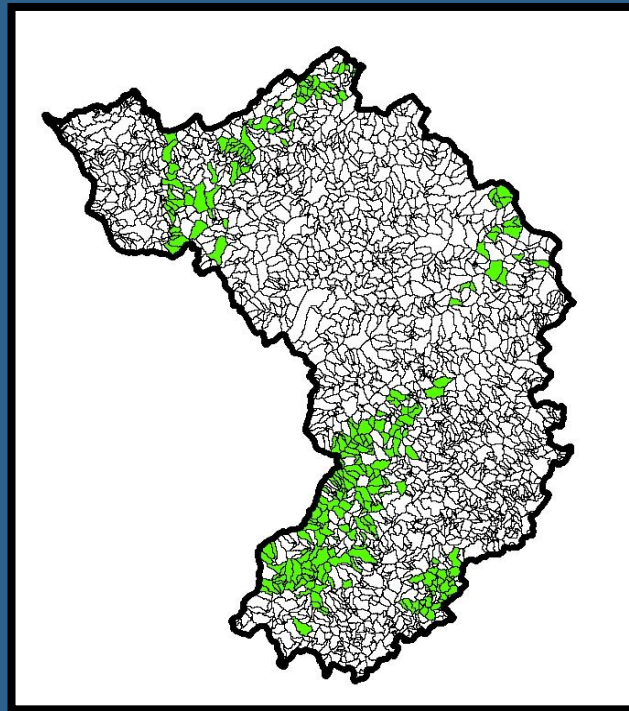
Scale Effects

Brook Trout Occupancy

Watershed (HUC10): 76% of watersheds

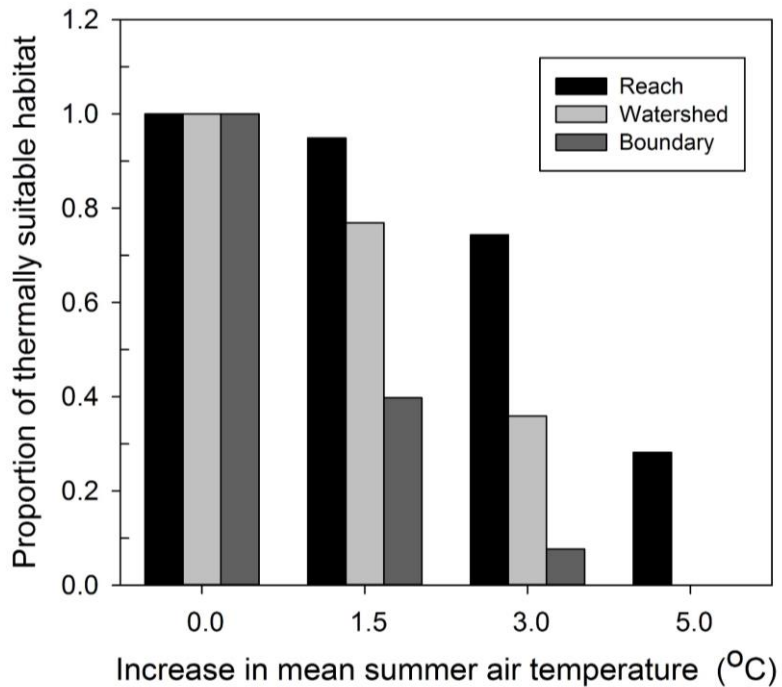


Catchments (HUC14): 11% of catchments



Scale Effects

Brook Trout Habitat



From Snyder et al.
2015



Successes and Challenges

Program

- Full implementation of work plan actions hampered by limited resources, personnel
- Most successful actions are those most closely aligned with state/federal agencies, NGOs program priorities
- Work on priority components (e.g., genetics, metrics, reporting tool) is moving forward, but slowly



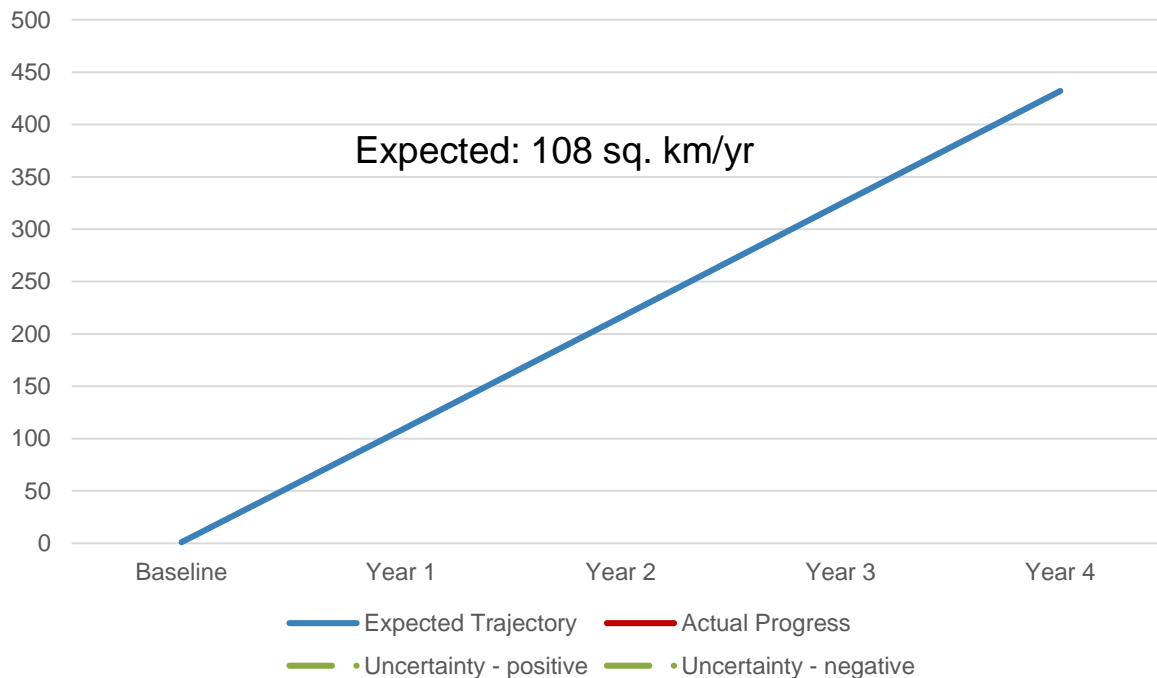
Successes and Challenges

Program

- Limited success with cross-GIT collaborations, engagement with CBP teams related to identifying/communicating with local decision makers, co-benefits.
- Need to develop additional metrics to quantify conservation actions that substantially contribute to maintaining current brook trout habitat – equally important as restoration



What is our Expected and Actual Progress?





On the Horizon

- New research findings related to genetics, restoration methodologies, impacts of climate, land-use change.
- Results of new fine-scaled fish habitat assessment
- Activities related to healthy watersheds, fish passage, aquatic connectivity efforts



Adapt

How does all of this impact our work?



Based on what we learned, we plan to ...

- Continue to engage BTAT members/NGOs to identify priority action items with greatest impact, knowledge gaps
- Develop additional metrics related to conservation/protection of existing high quality brook trout habitat



Based on what we learned, we plan to ...

- Continue to address science needs related to climate impacts, genetics, habitat assessment
- Work with BTAT/CBP staff to develop tracking spreadsheet/tool for all partners (including NGOs) to report progress using common metrics.



Help

*How can the Management Board
lead the Program to adapt?*



Help Needed

- CBP/other staff support to help develop communication/outreach plan, identify key decision-makers
- If we can't get the best available science to the right decision makers, then our ability to increase brook trout habitat and occupancy is limited.



Help Needed

- CBP staff support to help develop and maintain tracking spreadsheet/tool
- MB help to address insufficient monitoring data to adequately track progress towards outcome
- MB help to address insufficient support for full participation of BTAT members

QUARTERLY PROGRESS MEETING
Chesapeake Bay Program



Discussion



Additional Science Needs

Brook Trout Genetics-Related Management Questions

- Select donor populations for restoring Brook Trout in waters where they once existed
- What metrics should be used to evaluate and prioritize potential source stocks?
- Assess Brook Trout population responses to the removal of a barrier
- Determine if a Brook Trout population is close to “winking out”
- Assess and manage Brook Trout effective population size/effective number of breeders
- Establish critical Brook Trout population effective sizes for evolutionary potential
- Prioritize Brook Trout populations for conservation
- Provide justification for establishing habitat protections. Can genetic analysis be used to identify priority or important habitats for population sustainability and resilience?
- Monitor Brook Trout population trends
- Determine potential range of population size structure and growth among strains or populations
- Determine of a Brook Trout population’s fitness (sustainability)
- Can we effectively assess “fitness” or should fitness be determined by natural selection and time
-



Additional Science Needs

Fine-scale groundwater
influence on stream
temperature

From Snyder et al.
2015

