



# Approaches and Tools for Targeting CBP Resources

Scott Phillips, John Wolf,  
Bo Williams, Ryann Rossie  
STAR February 2022

- Overview
- Existing Tools
- Ecosystem Services
- Discussion

# Targeting

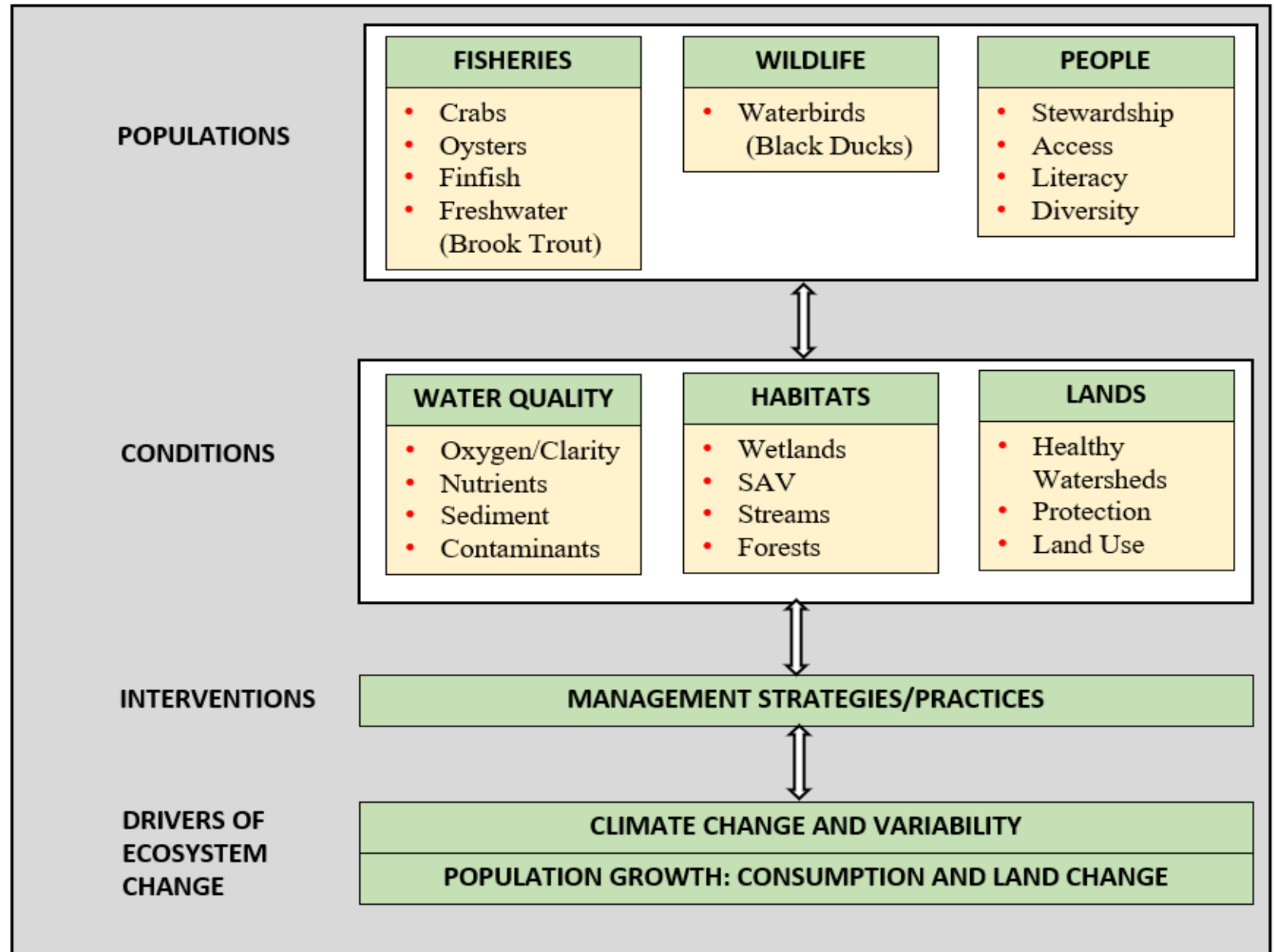
## Need:

- Watershed Agreement
- New CBP Directives
- Address multiple outcomes
- Best use of resources

## How:

- Places
- Practices
- Provide benefits

### CONCEPTUAL DIAGRAM OF CHESAPEAKE BAY ECOSYSTEM

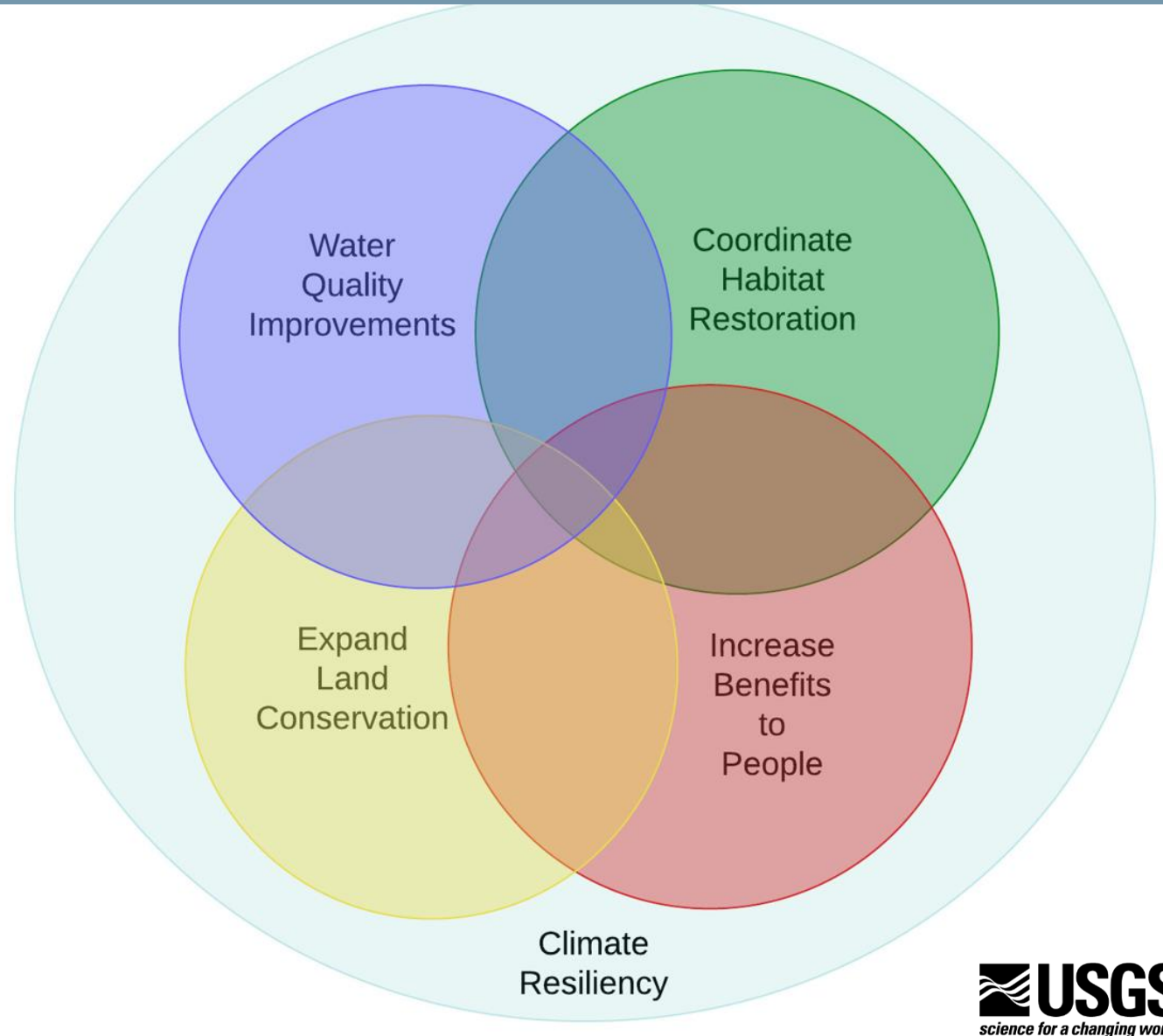


# Now is the Time for Targeting

- Accelerate progress:
  - CBP outcomes
  - Climate resiliency and diversity
- Funding increases
  - Infrastructure Law and federal programs
  - State efforts
  - NGOs and private capital
- Coordinated approach for targeting



# Strategic Approach for Targeting



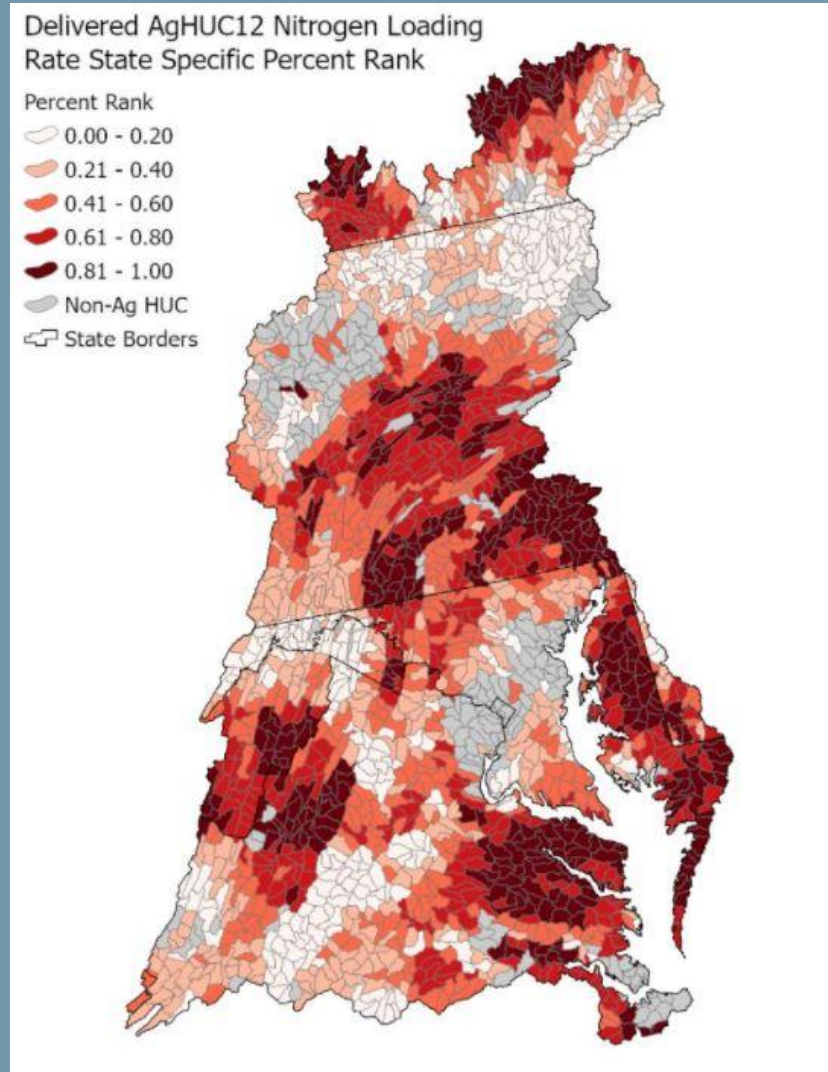
- Organize around topics:
  - Target and accelerate water-quality improvements
  - Coordinate habitat restoration
  - Expand land-conservation efforts
  - Benefits to people
- Improving climate resiliency
- Strive for multiple benefits
- Build from existing tools and stakeholder engagement



# Target and Accelerate Water-Quality Improvements

## Approach

- Nutrient and sediment practices
- Ag lands and practices
- Benefit other outcomes
  - Tidal WQ standards
  - Stream health
  - Fish habitat
- Consider climate resiliency and DEIJ



## Existing Tools

- Ag priority watersheds
- Watershed dashboard
- CAST

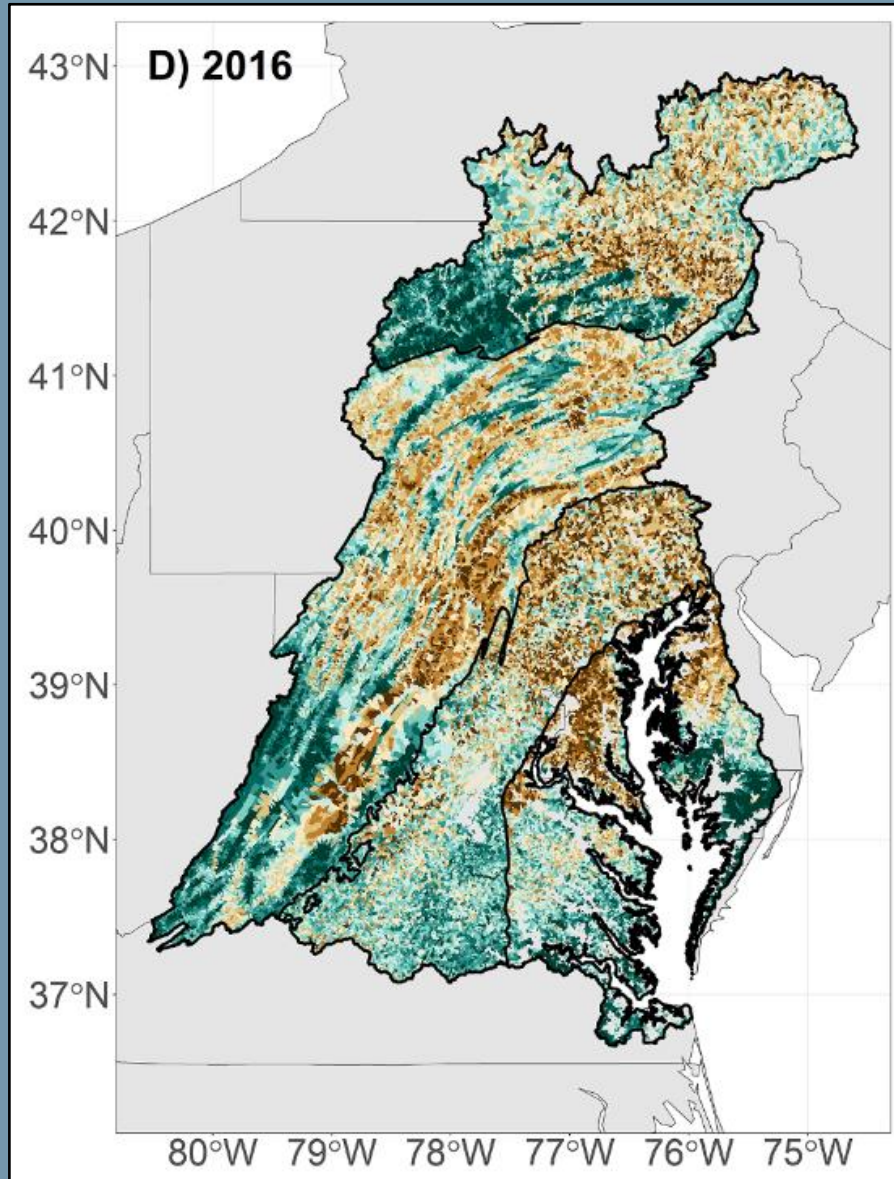
## Stakeholders

- EPA and USDA
- States and DC, CBC
- Local gov't and NGOs

# Coordinate Habitat Restoration

## Approach

- Address multiple habitat outcomes
- Forests and wetlands
- Stream health
- Fish habitat
- Watershed and estuary



## Existing Tools

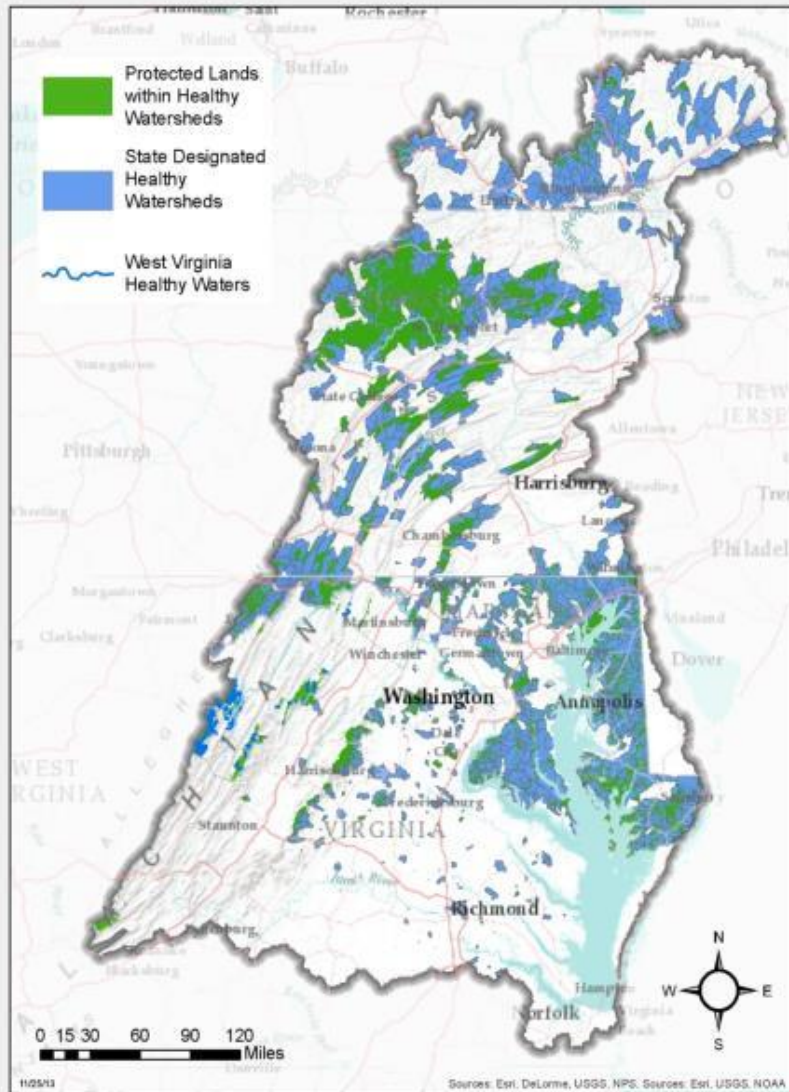
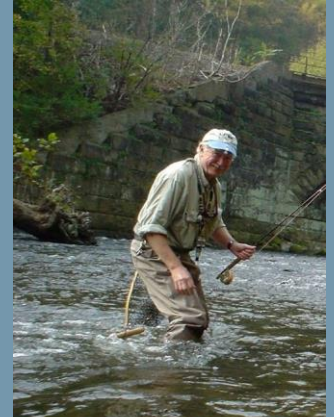
- Watershed Dashboard
- Cross-Goal Team Mapping
  - STAR maps
  - Conservancy
- Diversity Dashboard

## Stakeholders

- USFWS, NOAA, USFS and NRCS
- States, DC, local govt.
- NGOs



# Expand Land Conservation



## Approach:

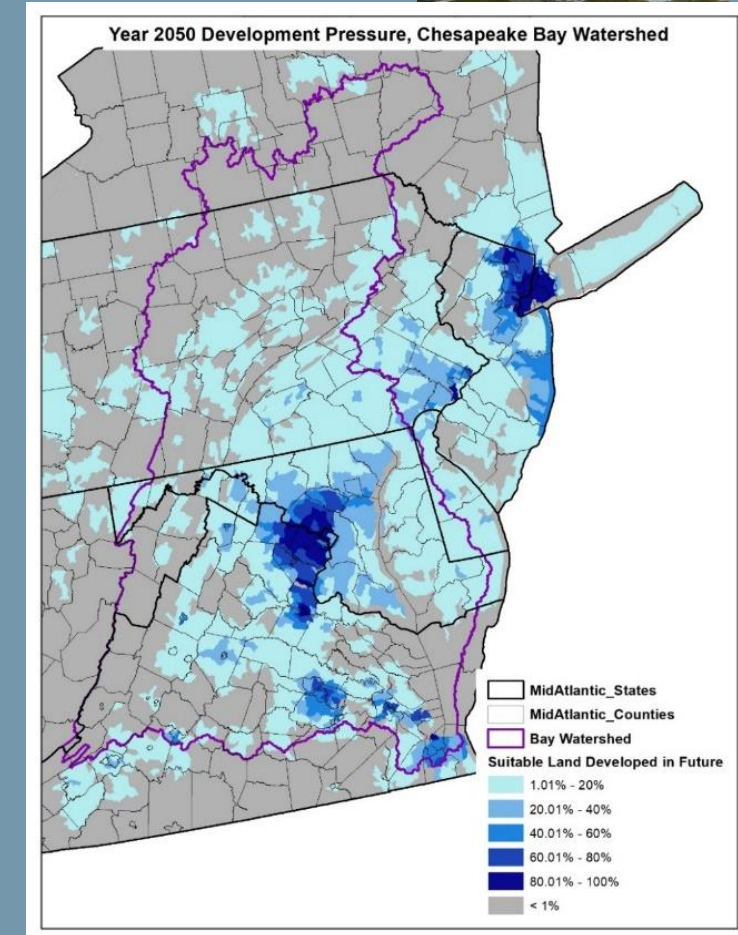
- Healthy watersheds
- Land protection
- Land use

## Existing Tools:

- Conservation Atlas
- Healthy Watershed Assessment
- Land-change model

## Stakeholders:

- Chesapeake Cons. Part.
- NPS, DOD, USFWS, FS
- States, Local Govt and NGOs



# Benefits to People

## Approach:

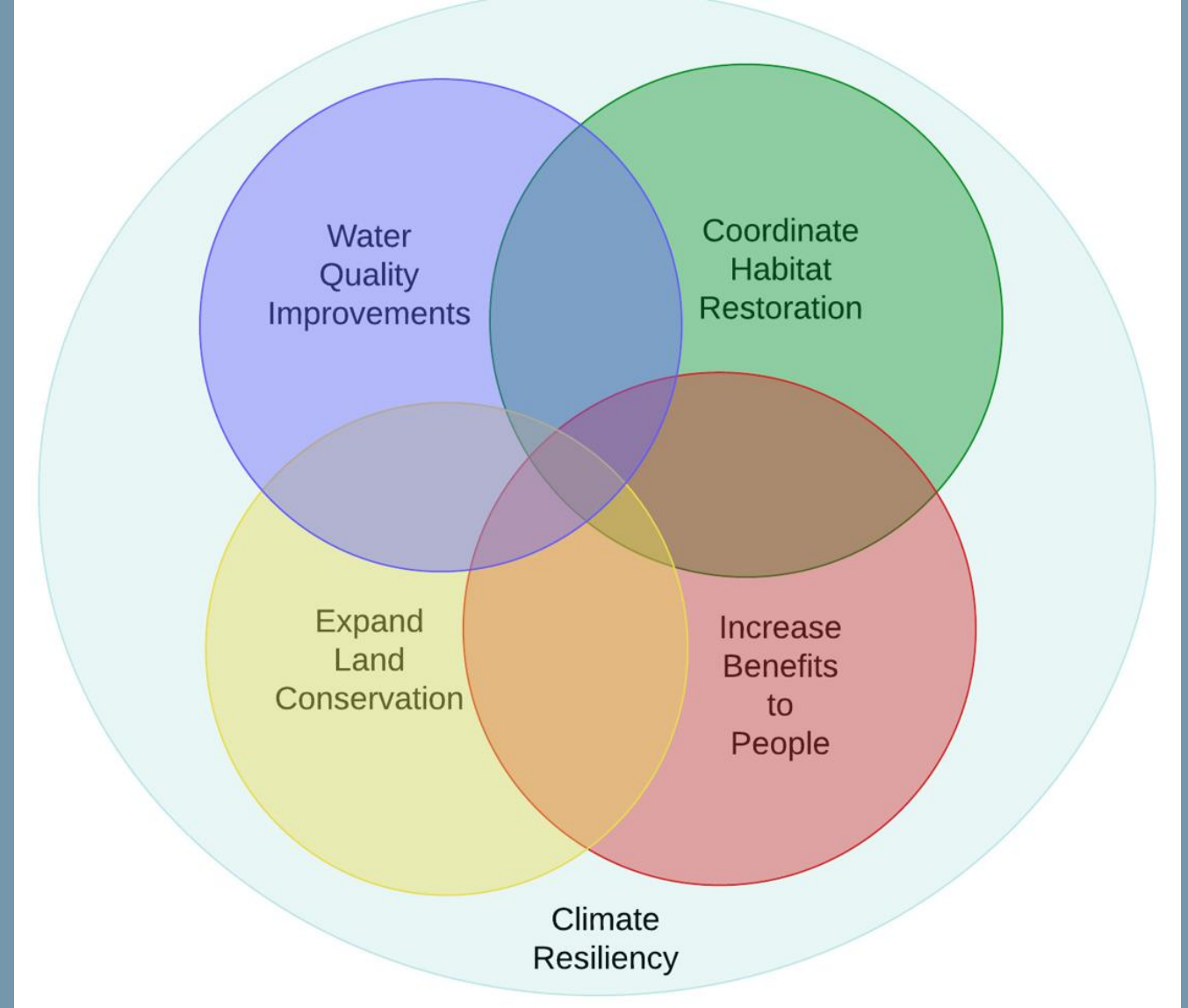
- Stewardship and access outcomes
- Diversity Directive
- Social science

## Existing Tools:

- Conservation Atlas
- Chesapeake Diversity Dashboard

## Stakeholders:

- Chesapeake Cons. Part.
- NPS, DOD, USFWS, FS
- States, Local Govt and NGOs





# Next Steps: Strategic approach for targeting

- Multiple science providers:
  - USGS, USFWS, EPA, NOAA
  - Chesapeake Conservancy
  - States
  - NGOs
- Organize existing tools
- Interact with stakeholders to apply tools
- Enhance tools with upcoming results and data

