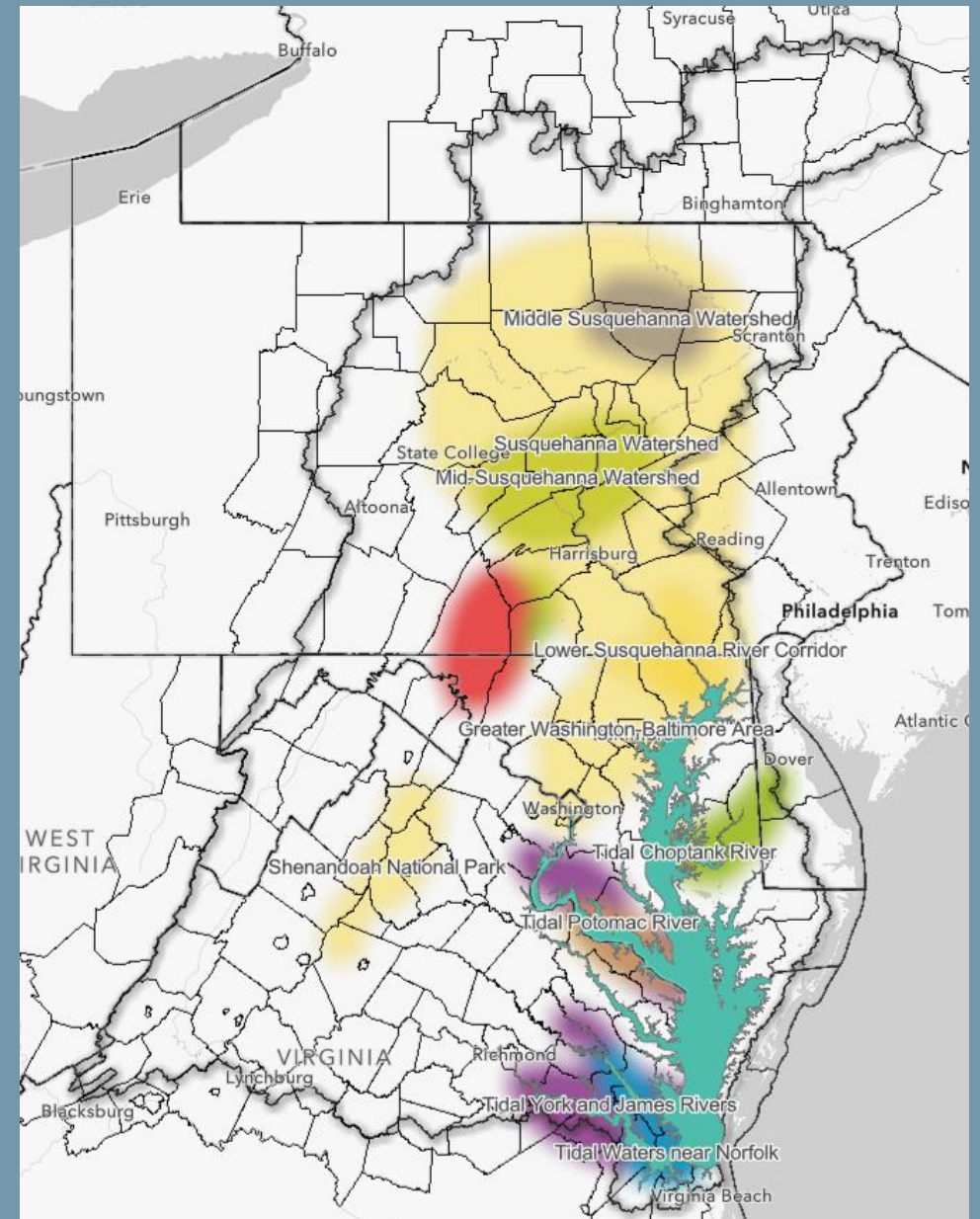


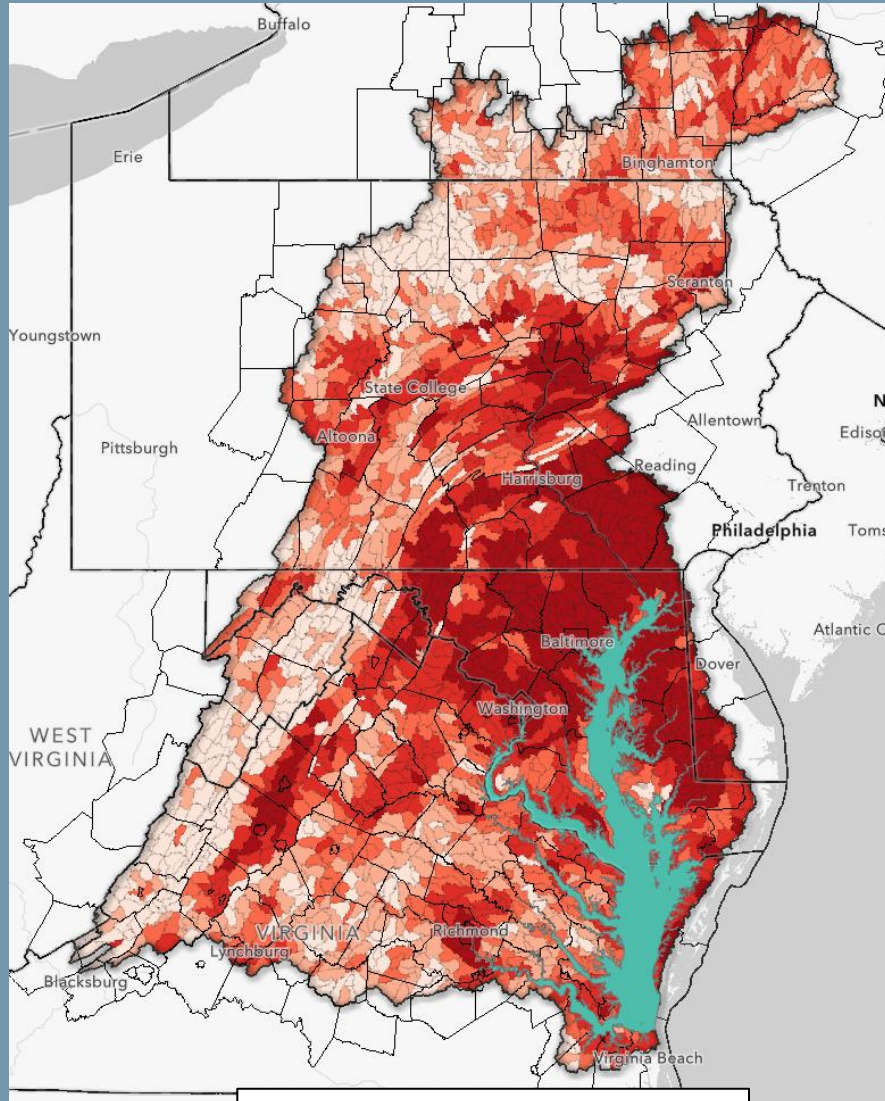
Geographic GIT Priorities

Recognizing regional areas of common interest

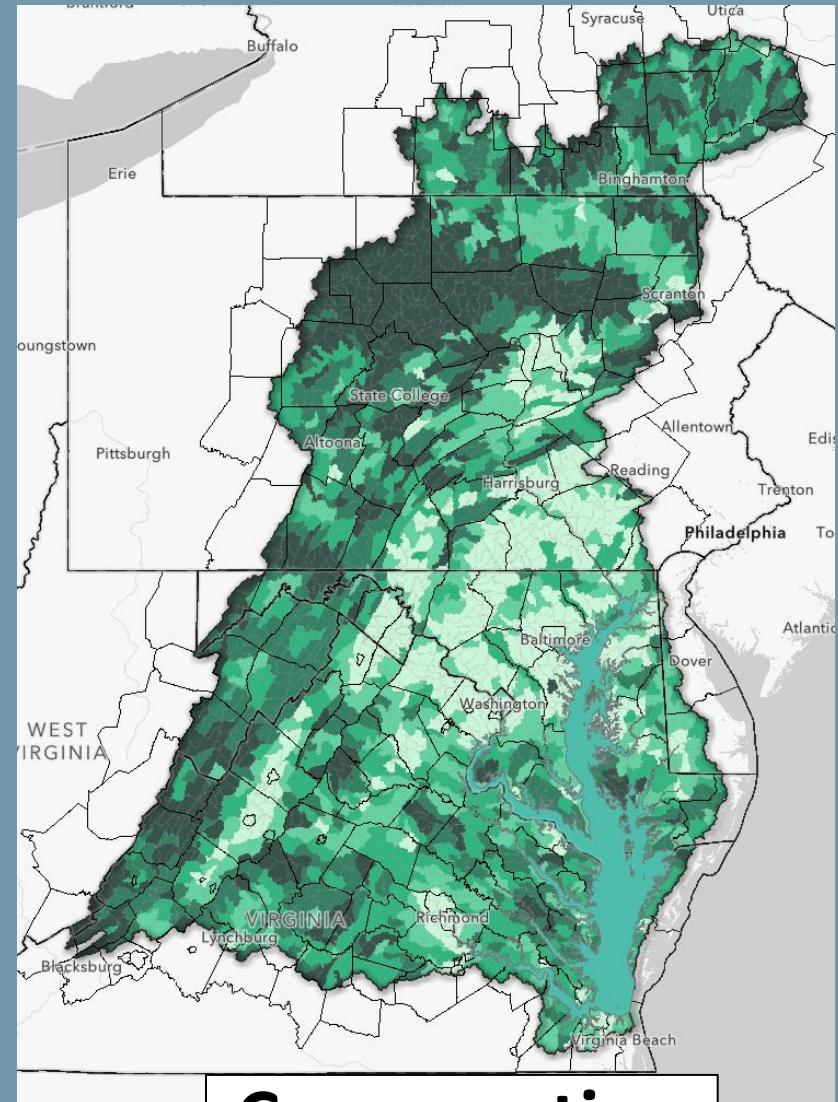
- Priority landscapes of GITs
- Drew from 2015/16 mapping work session
- Areas of potential overlapping interest
- Precursor to Cross-GIT Mapping



Cross-GIT Mapping



Restoration



Conservation

Cross-GIT User Research

Summary Chesapeake Bay Program User Needs Research Initiative



Chesapeake Bay Program
Science. Restoration. Partnership.



RTI Innovation Advisors

Cross-GIT User Research

Categories of Key Results

Solutions

Central
Location
for Tools

Case
Studies on
Use of
Tools

Training on
How to Use
Tools

Tools for
Cross-GIT
Analysis

More
timely data

Higher
resolution
data

New
formats of
data

New types
of data

Needs

Targeting and Assessment Tools – Short Term Solution

- CBPO (Watershed Data Dashboard, CAST, DEIJ Dashboard)
- Chesapeake Conservancy/CCP
- Other Partner Organization (TNC, ACOE)
- GIT Funded Projects

Targeting and Assessment Tools Inventory – STAR and GIT Input

1. Targeting tools – what is missing?
2. Outcome-specific tools – options and opportunities for cross-outcome data access/integration?
3. Tools you would like to hear more about at future STAR meetings?
4. Suggested edits to tool descriptions?