

Street Sweeping and Storm Drain Cleaning Recommendations Debut Webinar

DATE: Tuesday, 29 September 2015, 10:30 am - 12:00 pm EDT

SPEAKERS: Tom Schueler, Chesapeake Stormwater Network

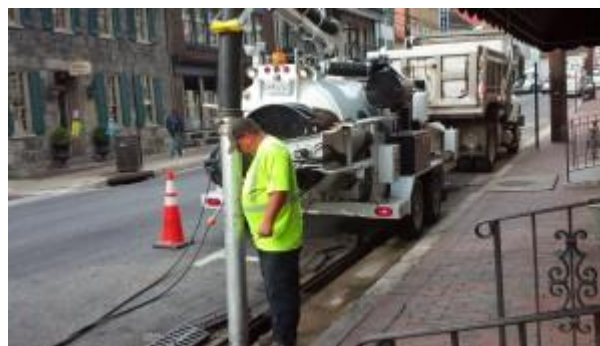
An expert panel was formed in 2012 to re-evaluate how sediment and nutrient removal credits are calculated for street and storm drain cleaning, which is an existing BMP approved by the CBP partnership.

While street cleaning is a common municipal practice across the Chesapeake Bay watershed, it is not widely used at the present time for pollutant reduction, given that most communities either do not sweep frequently enough or use ineffective sweeper technology.

The panel reviewed new research conducted over the last ten years on (a) nutrient and sediment loading from streets, roads and highways (b) the particle size distribution and nutrient, carbon and toxic enrichment of urban street dirt and sweeper waste, and (c) ten recent research studies that evaluated the effect of different street sweeping scenarios on different street types across the country. Based on this review, the panel came up with a number of recommendations which include revision to the existing street sweeping credit, establishment of a new credit for direct cleanout of solids from catch basins and creation of a new land use in Phase 6 of the Chesapeake Bay Watershed Model (CBWM).

This webcast will debut the panel's recommendations for the pollution reduction efficiencies for street sweeping and storm drain cleaning practices.

Join us!



A county employee cleans out the catch basins in historic Ellicott City.

Webinar Log-in Information

In advance of the webinar:

It is recommended that you test your flash player and internet connection here: https://epa.connectsolutions.com/common/help/en/support/meeting_test.htm

This URL can be used to troubleshoot individual issues with Adobe Connect, the platform used to host this webinar.

The day of the webinar:

To join the webinar, simply follow this link: <https://epa.connectsolutions.com/csn/>

You can join the webinar up to 30 minutes prior to the event time (12:00pm EST). Enter the room as a **guest**, entering your name and affiliation, e.g. "Cecilia Lane, Chesapeake Stormwater Network."

If you are viewing the webinar as a group, please use your affiliation and indicate the number of people viewing the webinar, e.g. "Chesapeake Stormwater Network, 5"

PLEASE MUTE YOUR COMPUTER. AUDIO WILL BE PROVIDED VIA TELECONFERENCE.

To join the conference line, dial: **(866) 299-3188**, and enter the conference code: **267-985-6222**

Note: Participants on the conference line will be automatically muted to avoid disruptions. Your hosts will indicate when they are un-muting the conference line for questions.

If you experience technical difficulties with the conference line, you can un-mute your computer to listen via Adobe Connect. Please note that you will be unable to speak to your hosts via Adobe Connect.

There will two chat boxes in Adobe Connect: one for questions to the presenters, and one for questions regarding technical, audio, or visual problems.