

FORT&RRA

formerly known as
Cascade Land Conservancy



Presentation for:

**Cascade Agenda
Implementing a Vision**

**Sustainable
Fisheries GIT
Meeting Agenda
June 12, 2012**

Agenda

- Context: A relevant introduction to the central Puget Sound region
- The Cascade Agenda
- Implementation: A Comprehensive Approach

Forterra

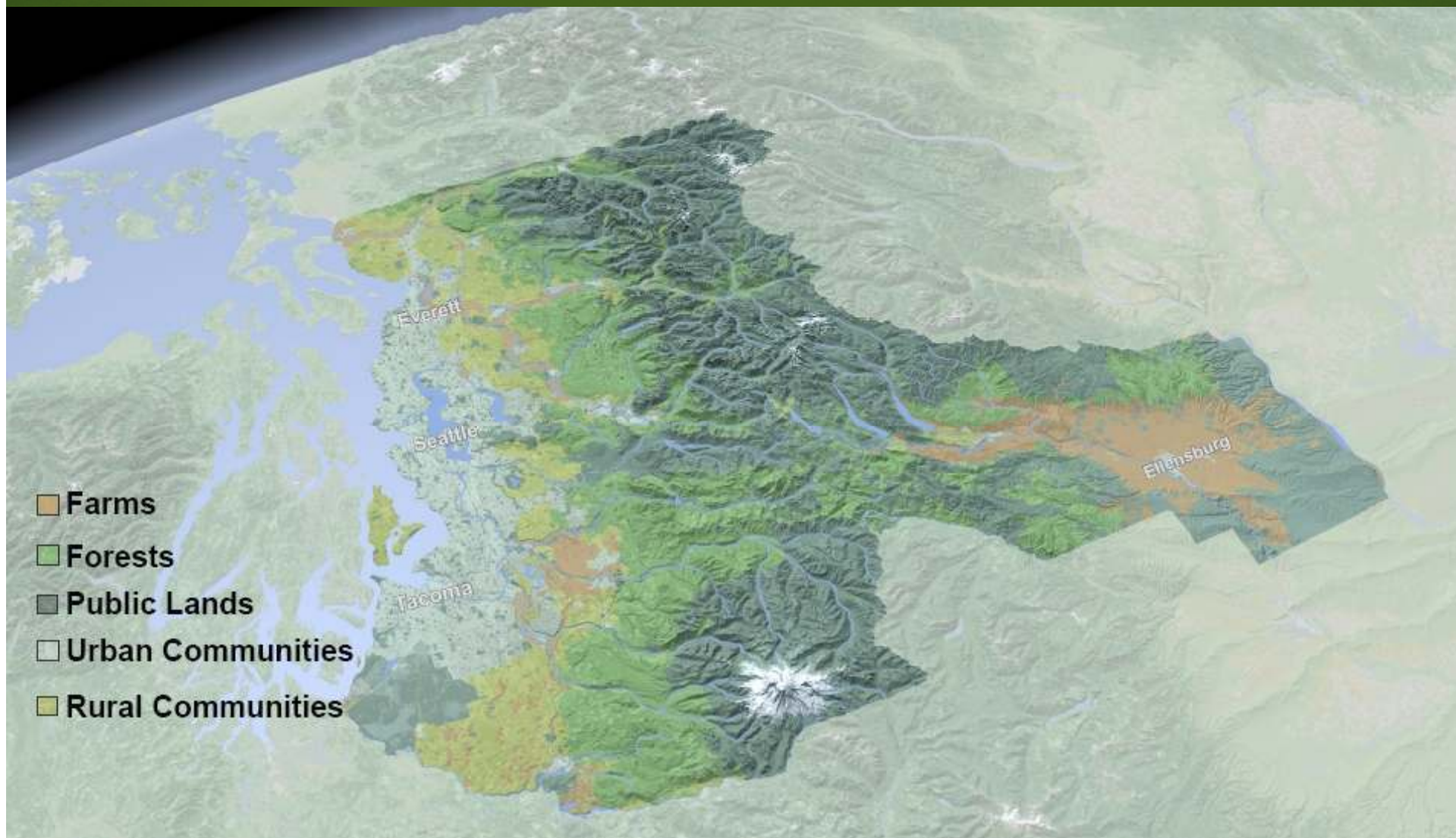


- Forterra is Washington's largest independent land conservation, community-building, and stewardship organization
- Conserved over 175,000 acres using market-based approaches

Creating Great Communities, Conserving Great Lands

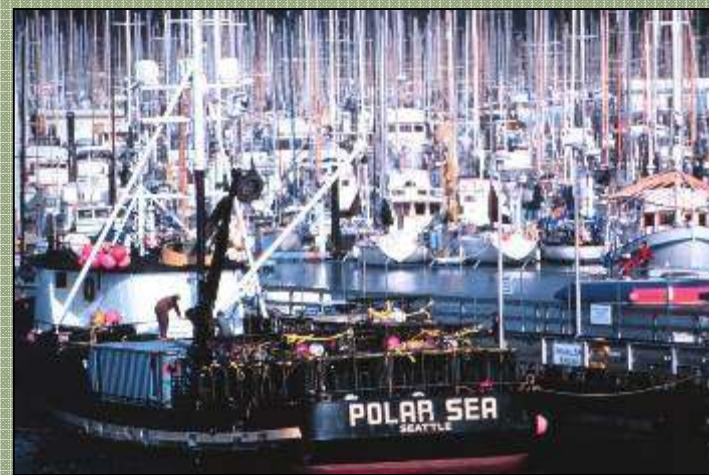
FORTERRA





The Big Picture

- Farming, forestry and fishing have defined this region for over 100 years.



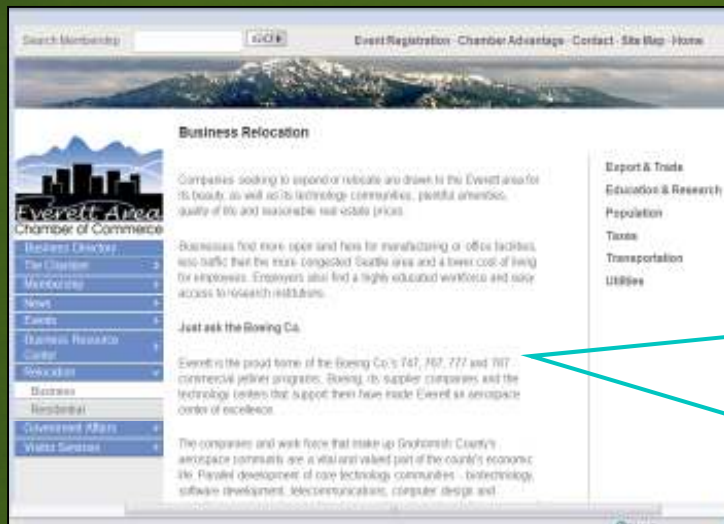
Strong Connections to the Land



Habitat & Ecosystem Services



Importance for Economic Development



“Companies seeking to expand or relocate are drawn to the Everett area for its beauty, as well as its technology communities, plentiful amenities, quality of life and reasonable real estate prices.”

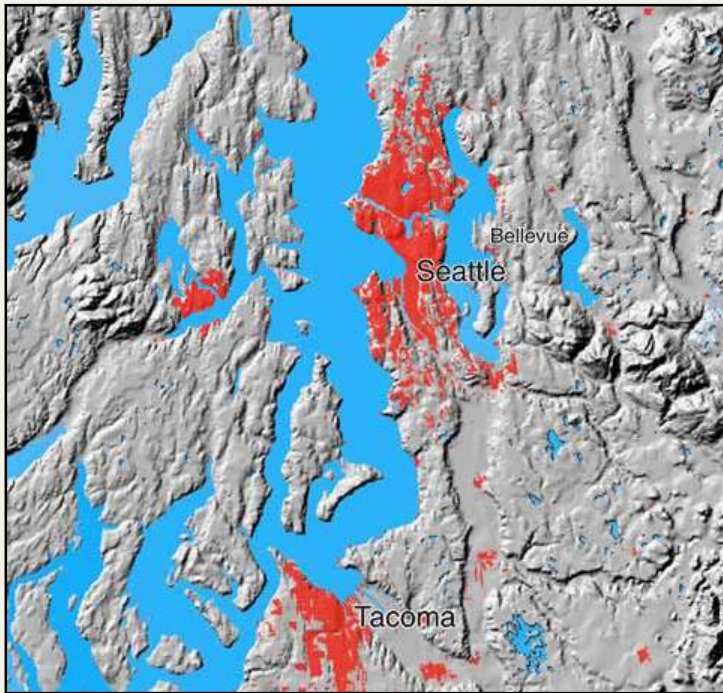
– *Everett Chamber of Commerce*



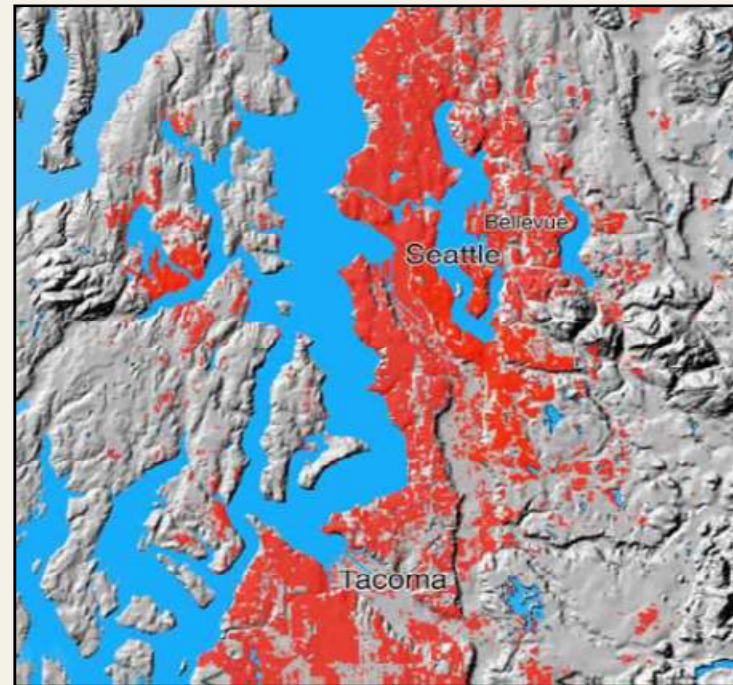
Bellevue is a “picture postcard of heart-stopping vistas.”

- *Bellevue Chamber of Commerce*

Growth Has Occurred



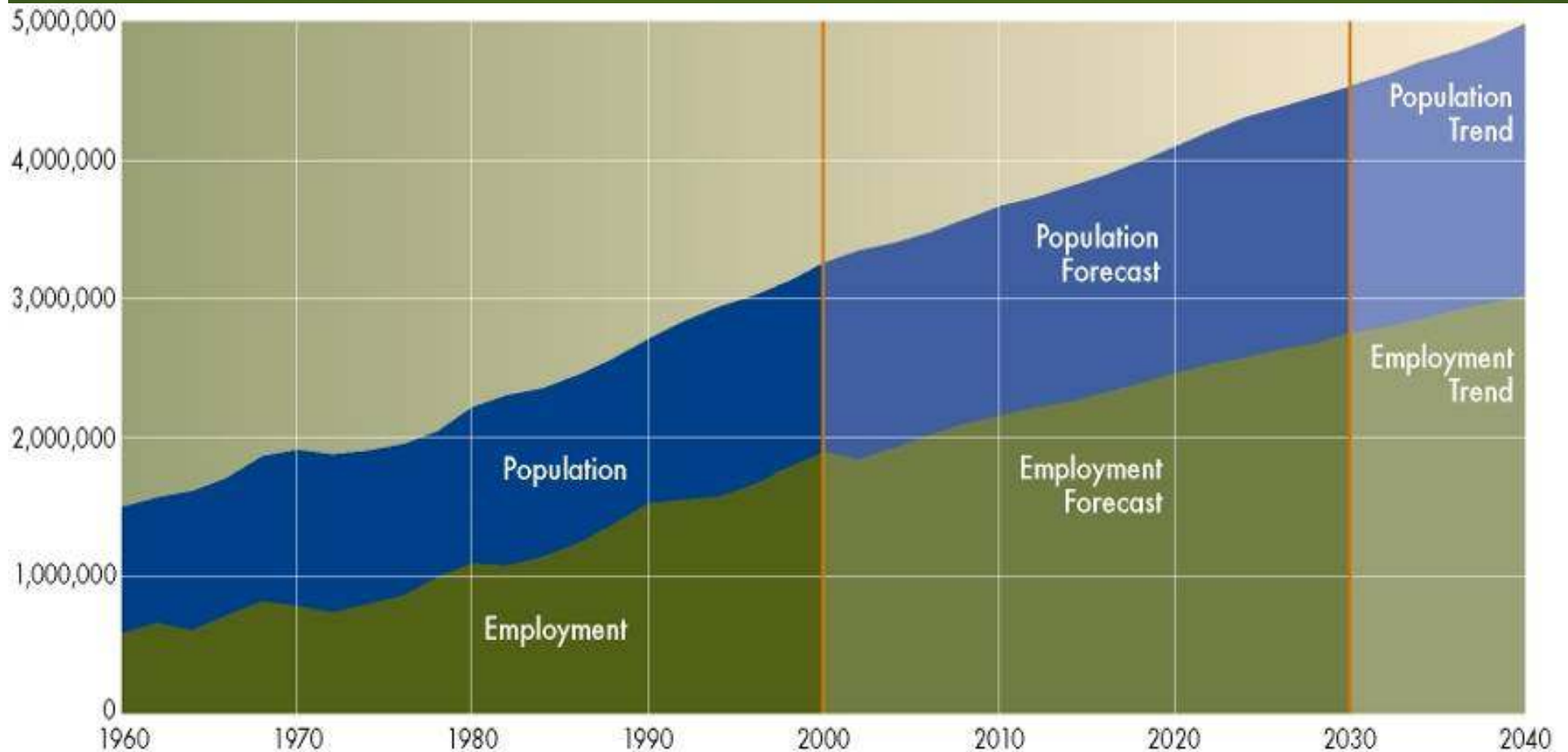
1950



2000

FORT&RRA

Growth Is Expected



Regional Growth Trends 2000-2007



Source: PSRC

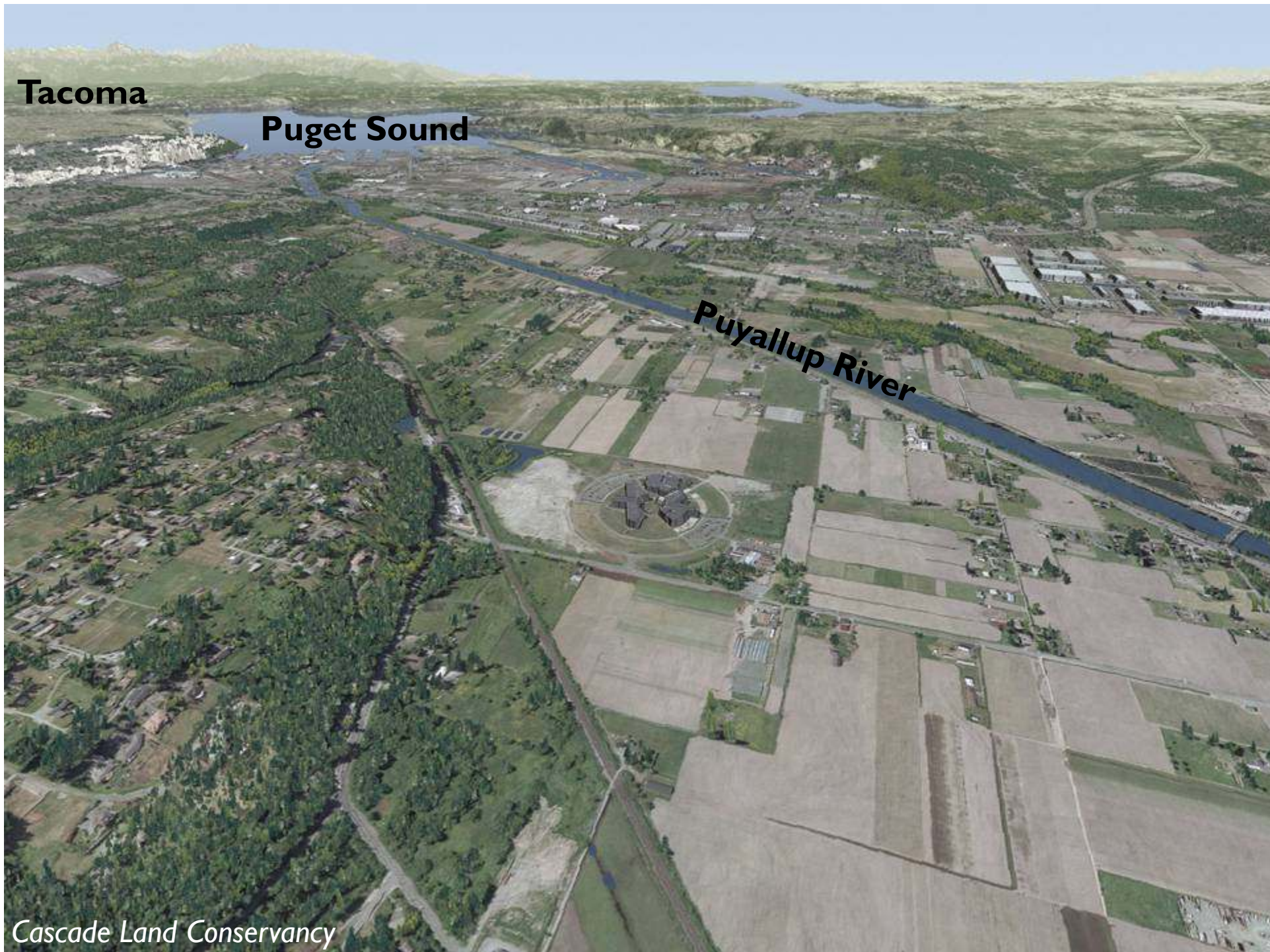
FORT&RRA

Tacoma

Puget Sound

Puyallup River

Cascade Land Conservancy



Tacoma

Puget Sound

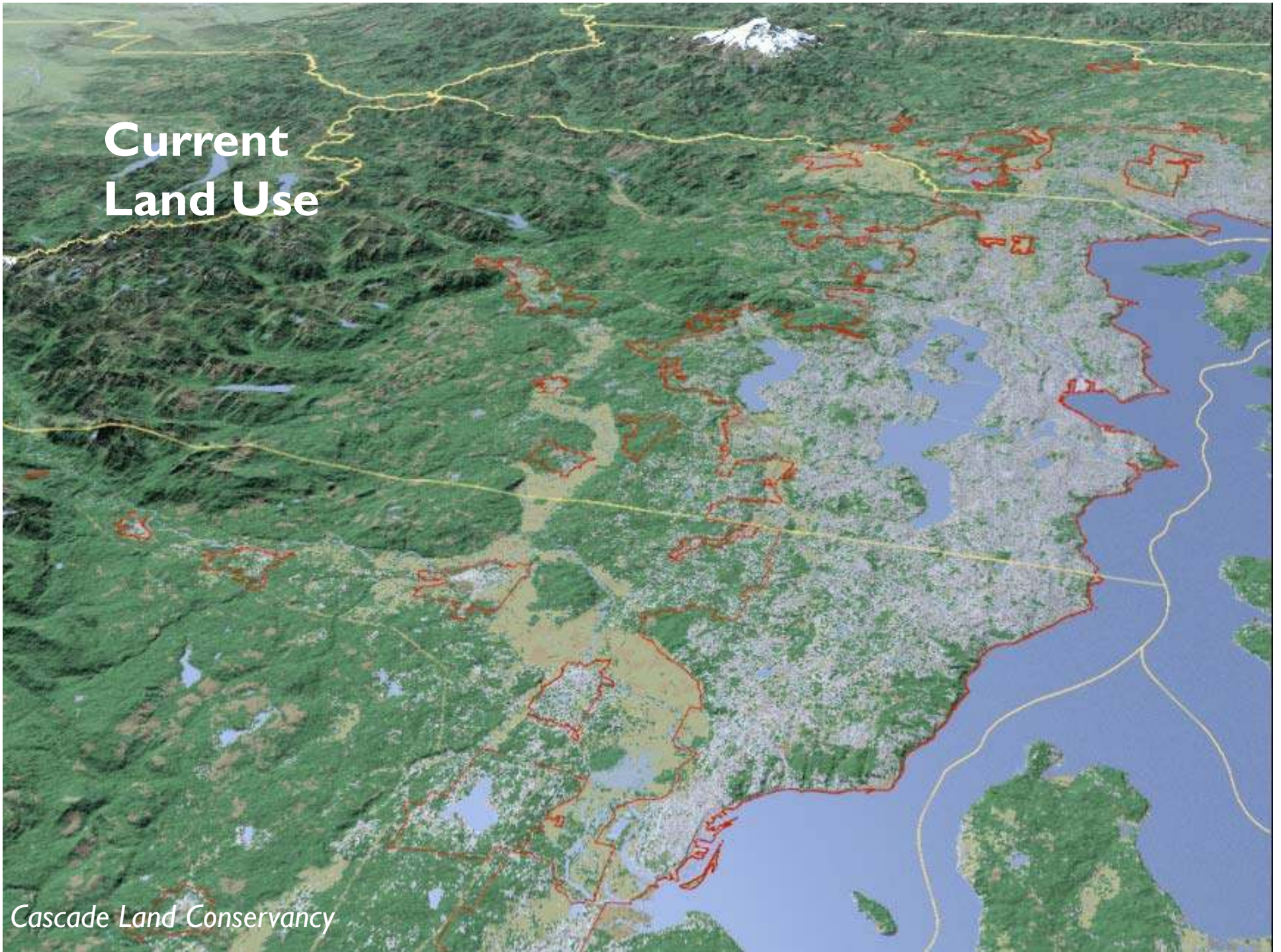
Puyallup River

Cascade Land Conservancy



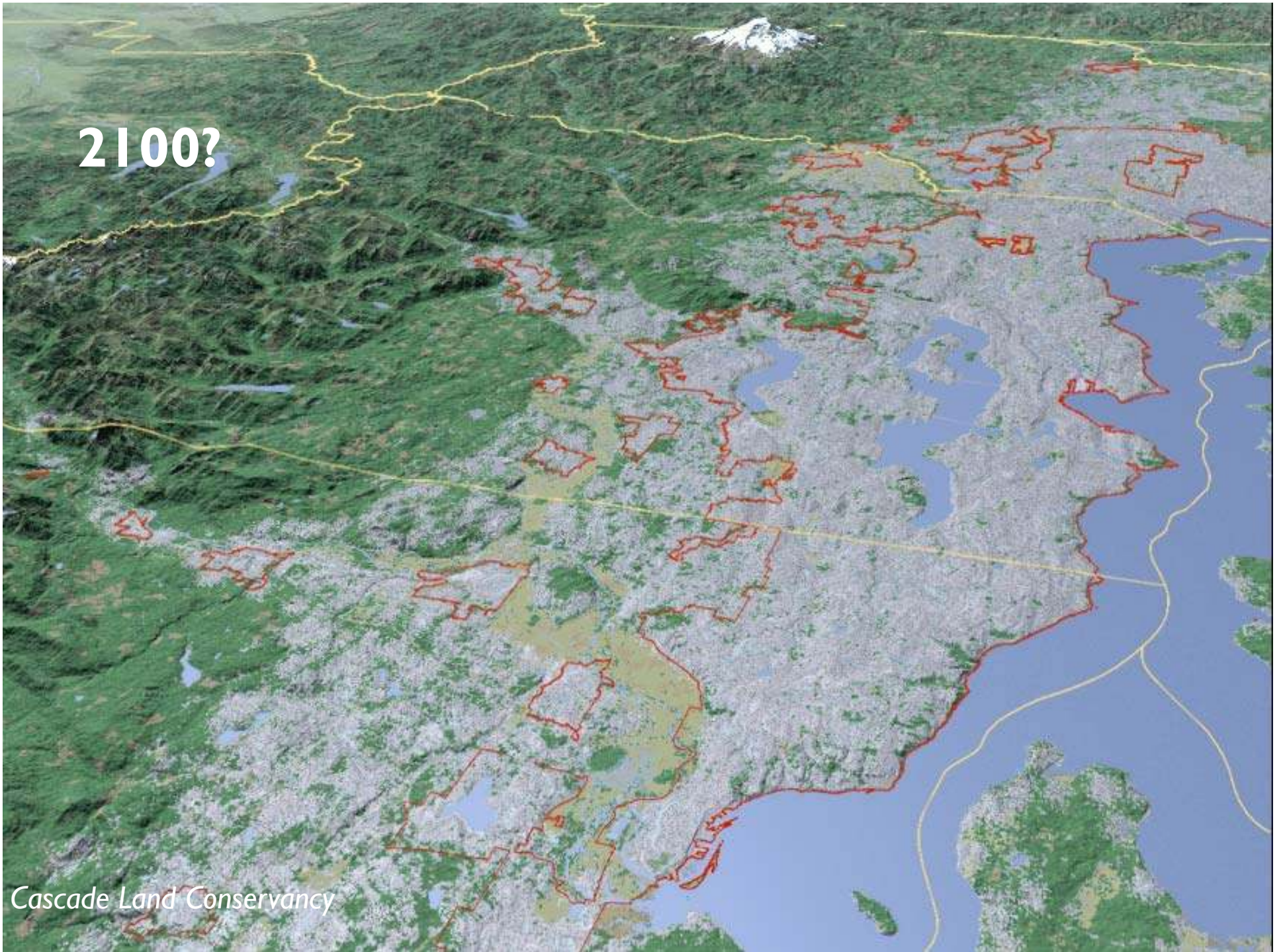
Current Land Use

Cascade Land Conservancy



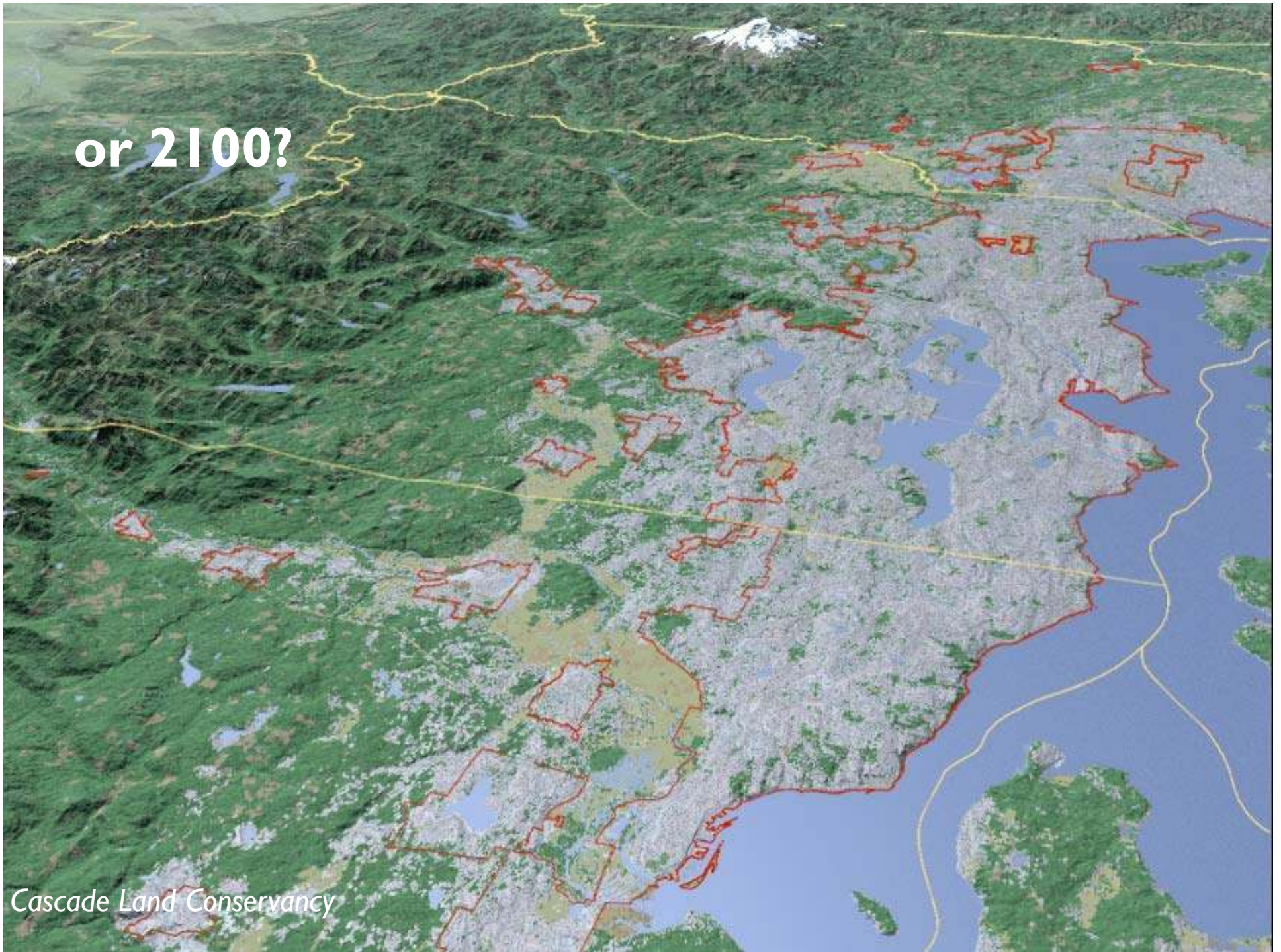
2100?

Cascade Land Conservancy



or 2100?

Cascade Land Conservancy



The Cascade Agenda

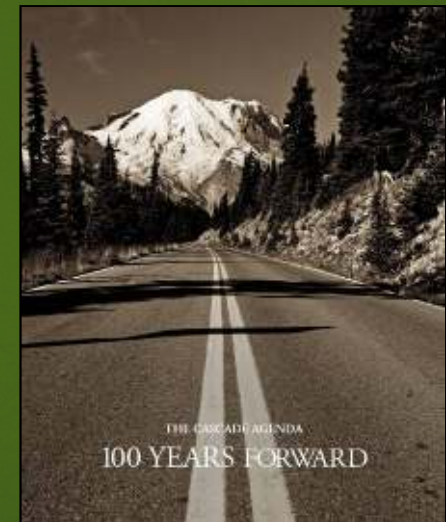
Turning Challenge into Opportunity

- **Saving our landscapes for the next century**

- 1 million acres of working lands
- 265,000 acres parks, natural areas and shorelines

Sustaining Communities for the next century

- Transforming, revitalizing our cities & towns
- Maintaining a rural community



It Takes a Comprehensive Approach



FORT&RRA

FORT&RRA

Agendas at a Glance

OUR LANDSCAPES

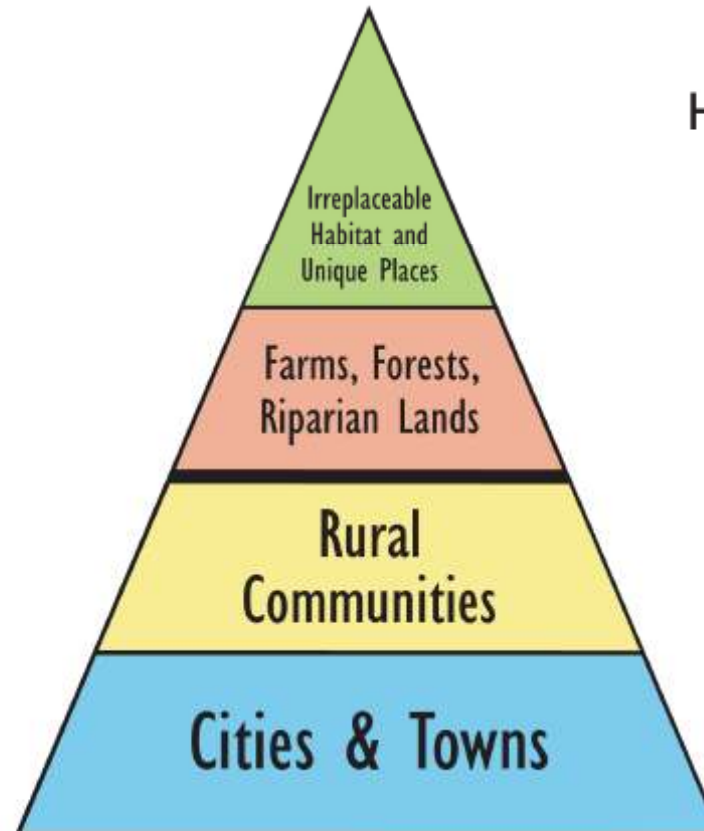
OUR FOOTPRINT

Temporary visitors

Minimal permanence,
visitors welcome

Limited residential with
minimal offsite impacts

Everyone invited and
welcomed



HOW WE GET THERE

Fee acquisition using public and
private funds

Flexible “portfolio” management
coupled with market-based
strategies

maximize conservation and
minimize offsite impacts with
market-based incentives

Livable and affordable;
Mitigate impacts;
Expand economy and
infrastructure

number of lots, landowners
land value

Farms and Forests: Approaches

- Transfer of Development Rights
- Community Forest Bonds
- Local Conservation Authorities
- Ecosystem Services Markets



The Quest for a Rural Solution



Conservation Villages

Now.



Later.



Investing in Communities



- Innovative Policies: Complete, Compact, Connected
- The Learning Network: CA Cities Program

Community Empowerment



Green Infrastructure



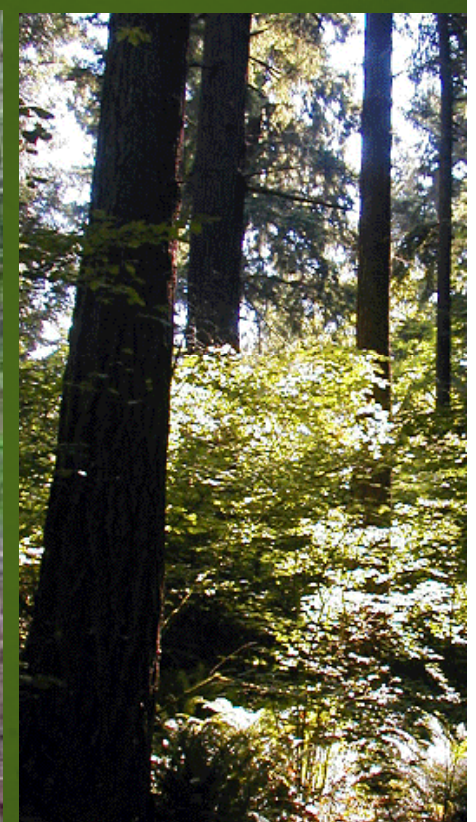
1. Remove



2. Replant



3. Evaluate



4. Maintain

Thank you

Skip Swenson

Managing Policy Director

(206) 905-6935

skips@cascadeland.org

