

Maryland DNR's Vertical Profiling Adventures

Mark Trice
1/5/2012

mtrice@dnr.state.md.us
www.eyesonthebay.net
Twitter: @eyesonthebay



Maryland DNR Vertical Profiler Deployments



2006 Test Deployment

Chester River / Kent Narrows

June – Oct 2007:

Potomac (Ragged Pt.)

Early June – Early July 2008:

Potomac (Ragged Pt.)

•Hit by something

May – Oct 2009:

Potomac (Sandy Pt)

June, July, October 2010:

Above Bay Bridge

http://mddnr.chesapeakebay.net/newmontech/contmon/profiler/profiler_2.cfm

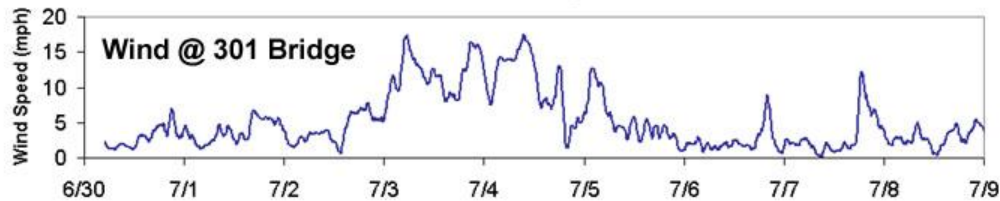
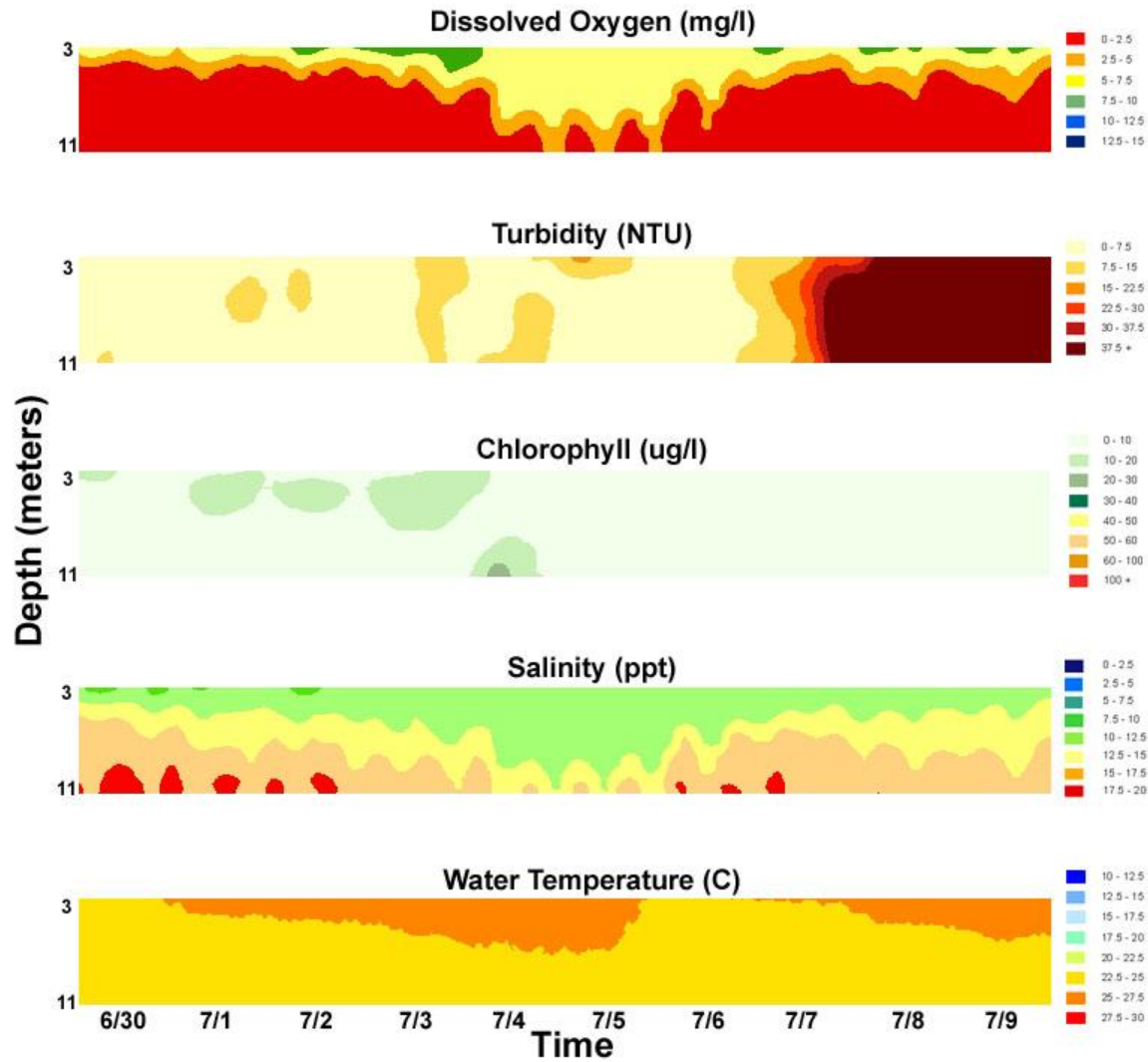
One August Deployment 2011:

Above Bay Bridge

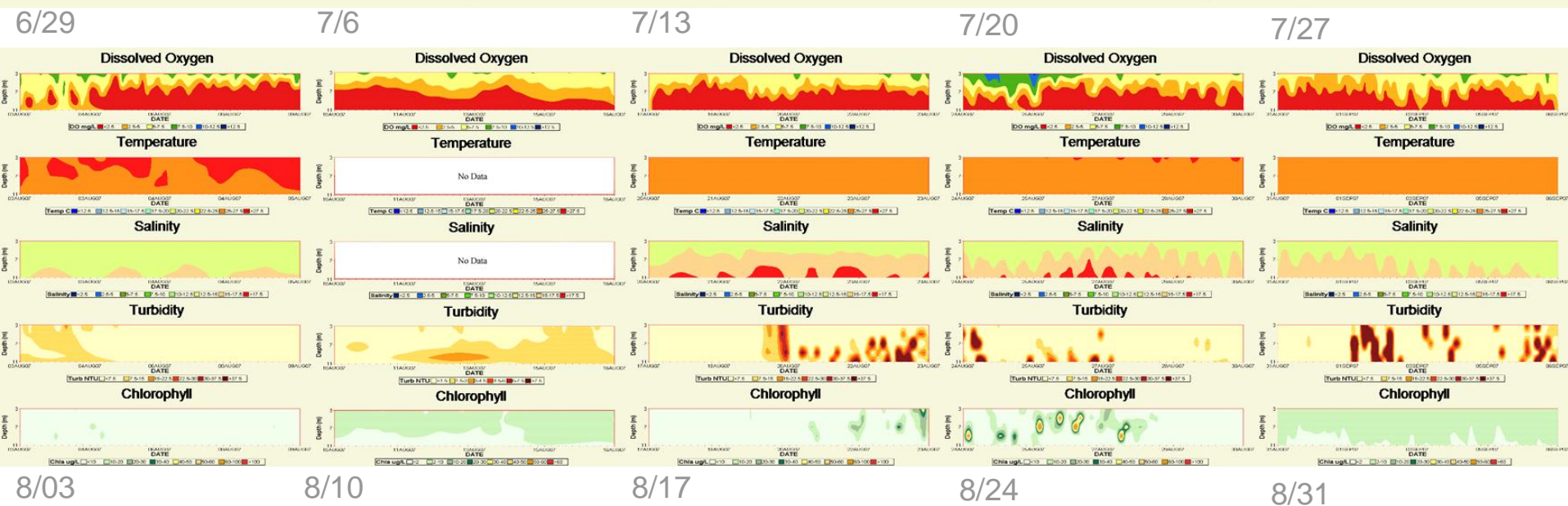
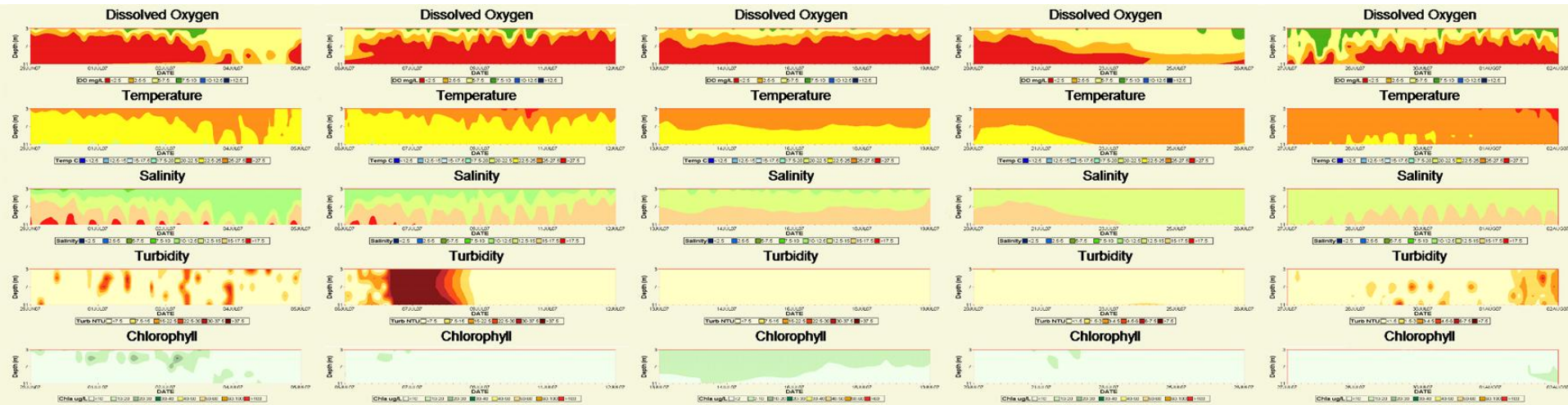
http://mddnr.chesapeakebay.net/eyesonthebay/stories/Profiler2011_summary.pdf

Potomac River Vertical Profiler

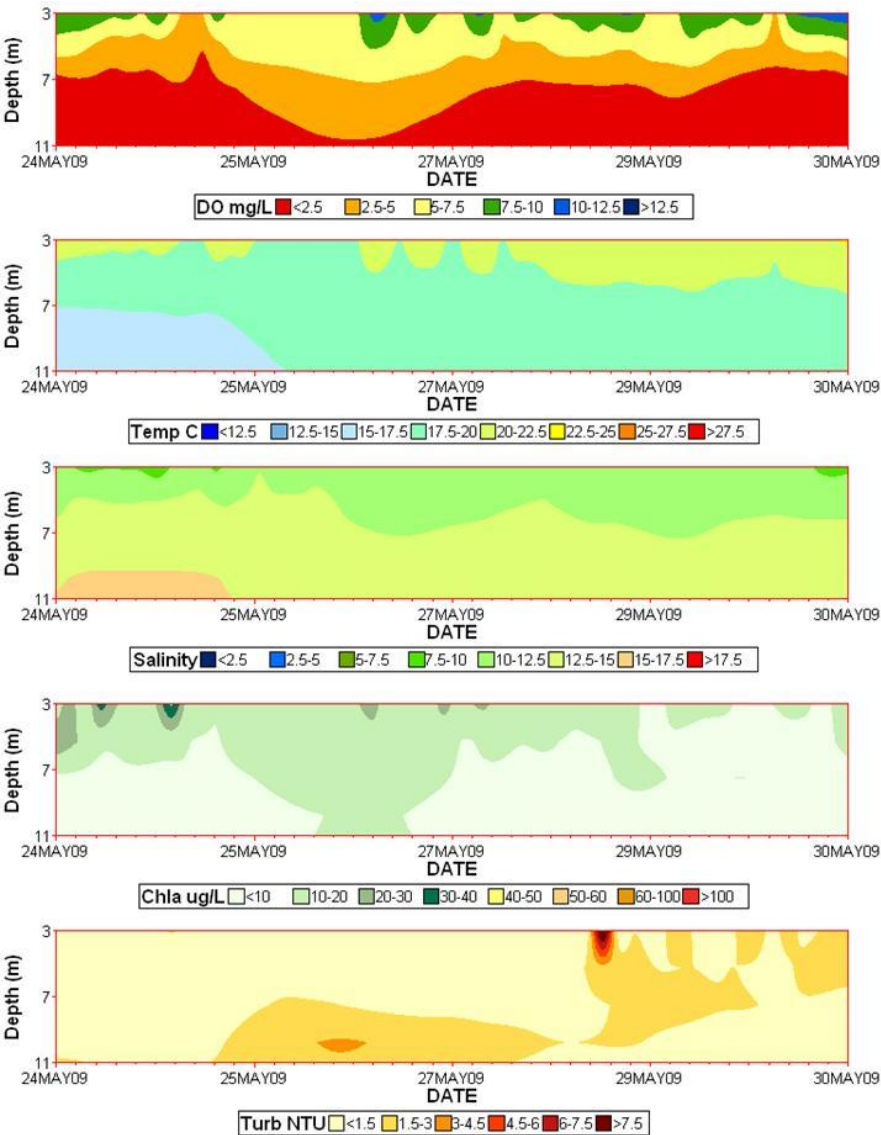
Deployment 1



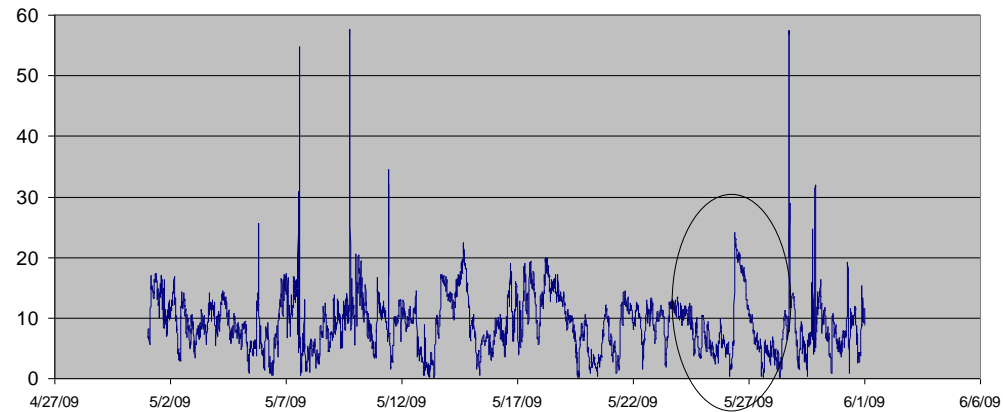
Portion of 2007 Potomac Ragged Pt. Deployment



2009 – from DNR Rain Event Story

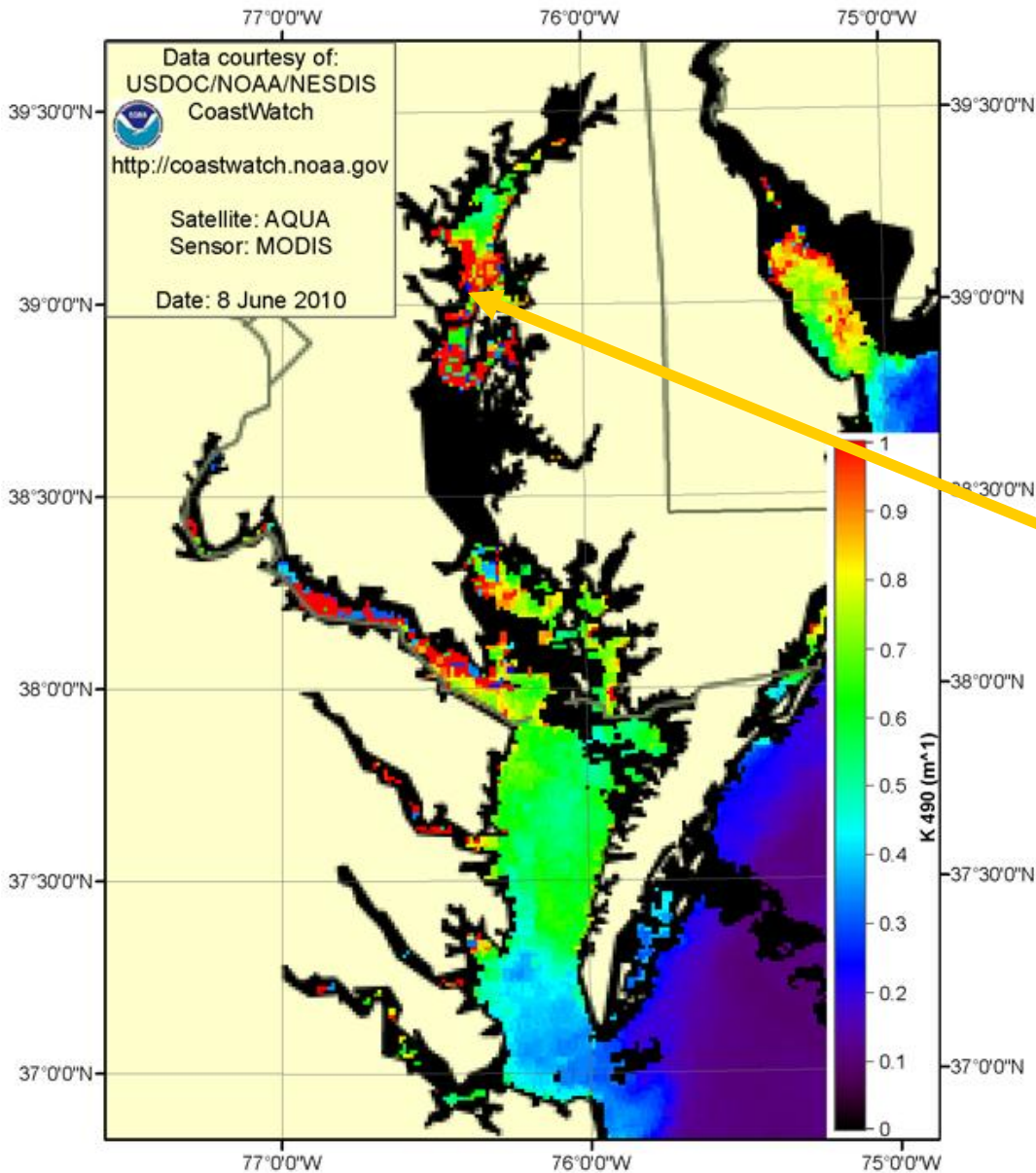


Wind Speed - NOAA Potomac Buoy



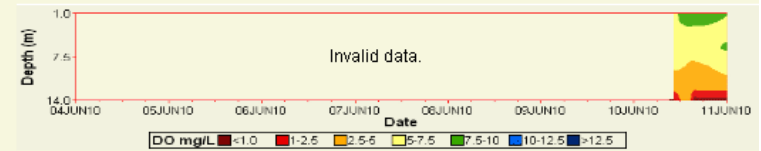
2+” Rain

http://mddnr.chesapeakebay.net/eyesonthebay/spring_rains_2009.html

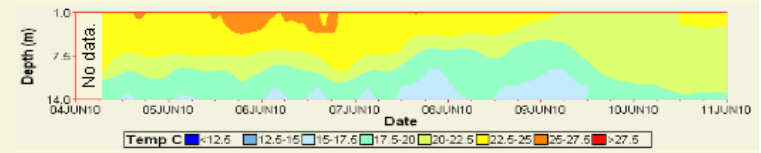


June 2010

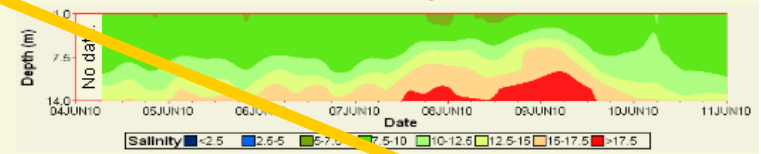
Dissolved Oxygen



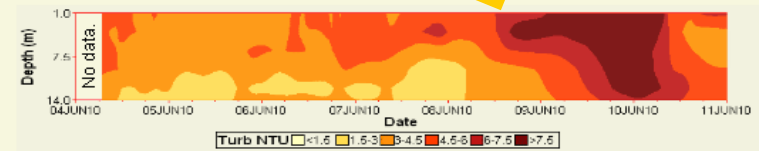
Temperature



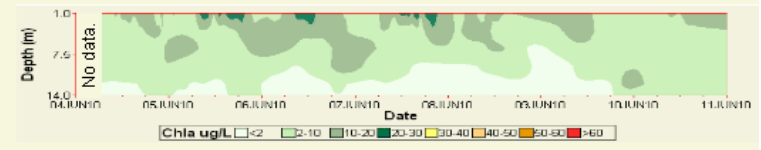
Salinity



Turbidity



Chlorophyll



Bottom DO (Above Bay Bridge)

