

FACILITATING FOREST- BASED OFFSETS

ALLIANCE FOR THE CHESAPEAKE BAY

IT SHOULD BE EASY
TO CREATE HEALTHY
FORESTS



OUR APPROACH

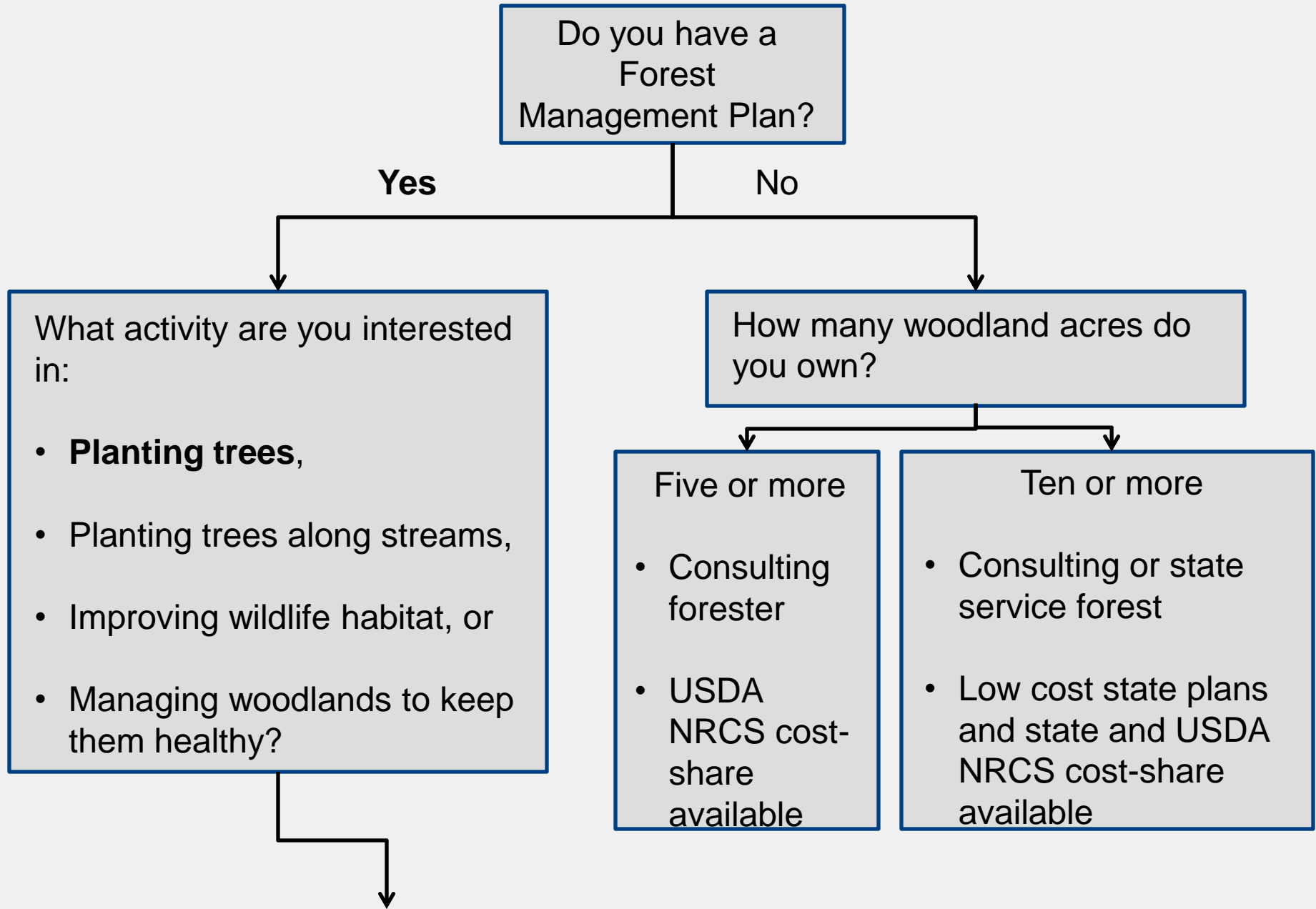
```
graph TD; A((CONSERVATION  
FUNDING  
DISCOVERY)) --> B((FUNDING  
ASSESSMENTS)); B --> C((AGGREGATION  
AND BROKERAGE));
```

**CONSERVATION
FUNDING
DISCOVERY**

**FUNDING
ASSESSMENTS**

**AGGREGATION
AND BROKERAGE**

FUNDING DISCOVERY



FUNDING FRAMEWORK

How many acres of trees do you want to plant?

One to three

- Grants
- State and federal cost-share
- **Nutrient offsets**
- Forest conservation banking
 - Forest Conservation Act
 - Critical Area

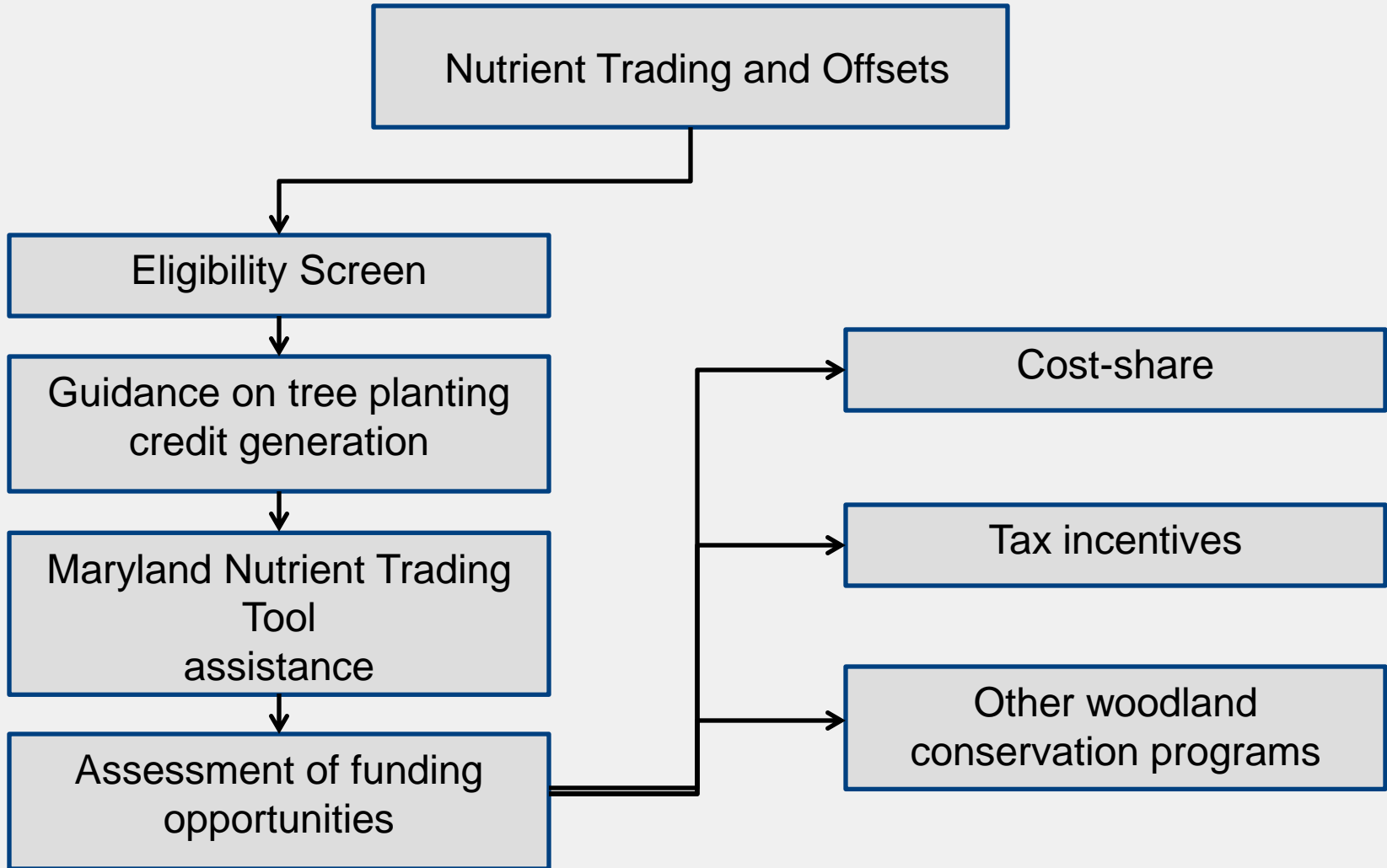
Three to 25

- Previous opportunities
- State income tax deduction for tree planting costs

25 and above

- Previous opportunities
- Tax benefits of easement donation

FUNDING FRAMEWORK



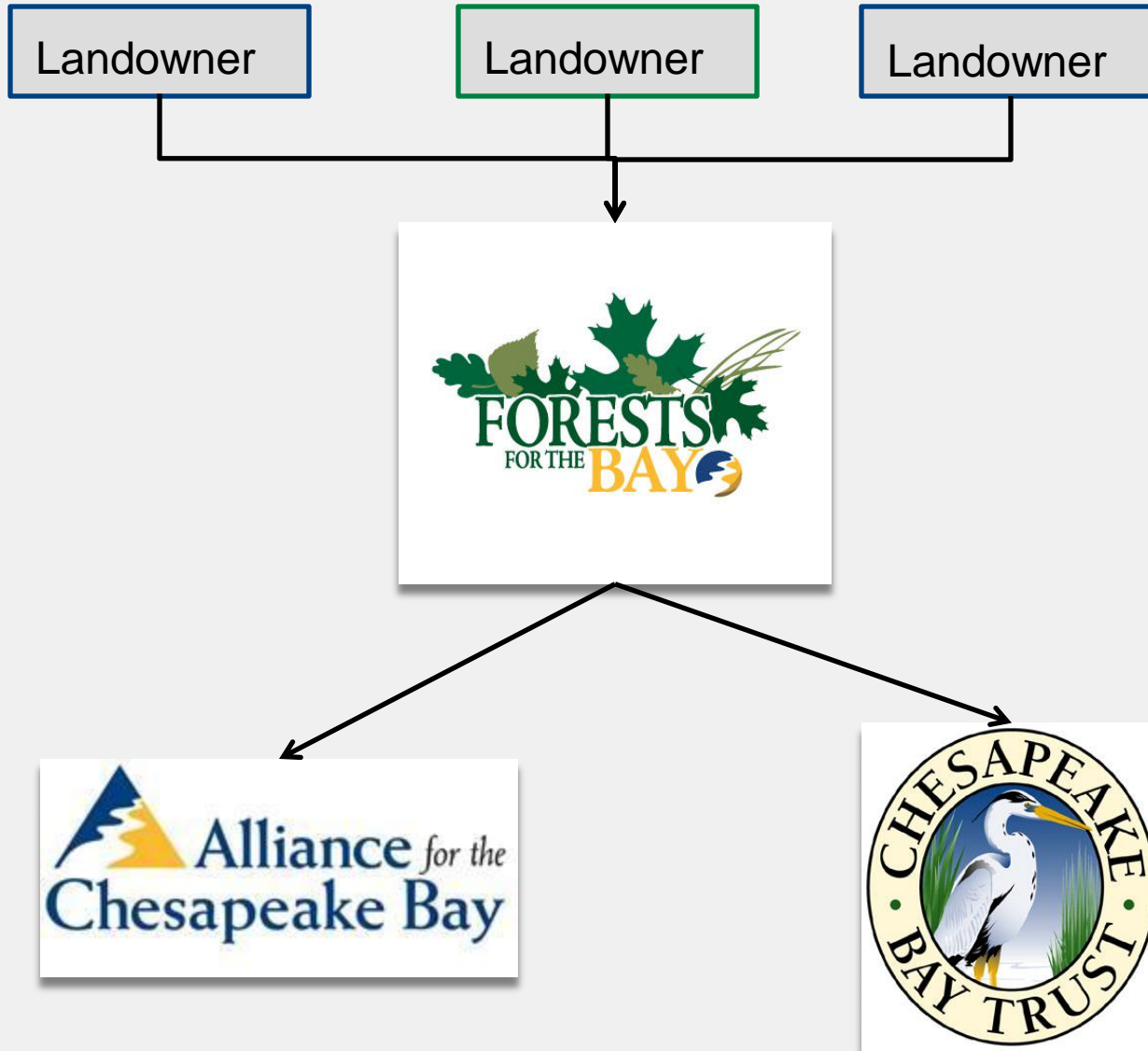
FUNDING ASSESSMENTS

Implementing conservation funding assessments

- Suite of programs
- Financial costs and benefits
- Conservation outcomes (i.e., nutrients, sediment, carbon sequestration, and air quality improvement)



CREDIT TRANSACTIONS



TOOLS: OUTREACH



Sign up for your **free membership** today and you'll receive the latest tools and resources.

JOIN US ►

[Sign In](#)

[About](#)

[Partners](#)

[Contact](#)

[Home](#) ▼

[Getting Started](#)

[Upcoming Events](#)

[News](#)

[Local Resources](#)

[Photos & Videos](#)

Your land is your legacy. Learn how to care for it.



Member Spotlights

See what other woodland owners are doing to keep their woods healthy and working for them.

Getting Started with 3 Easy Steps



1. Discover Your Woods

Get a free report on how your woods are providing you benefits and find sources of funding to keep them working for you.



2. Plan for Your Land

Use this guided **woodland planning tool** and take steps to help keep your woods healthy.

TOOLS: ASSESSMENT



LandServer

[Benefits](#)[Map My Property](#)[My Account](#)[Create an Account ▶](#)[Log In ▶](#)

Get Started

Get a free report on how your woods are providing you benefits and find sources of funding to keep them working for you.

- 1 Create a user account or Login**
With a free LandServer account, you can map your property, save your reports and more.
- 2 Map your property**
Enter a street address to position the map, then identify your property using LandServer tools (login required).
- 3 Review your online report**
Your report will detail the composition of your property, the natural benefits provided by your property, and your potential to benefit from conservation programs and to receive payments for enhancing the natural benefits on your property ([view sample report](#)).
- 4 Learn More**
Become more familiar with conservation funding sources and find people who can help you take care of your land with [Forests for the Bay](#)

Landserver Supported Areas



TOOLS: DEVELOPMENT



Woodland Crediting Platform

Log In ▶

STEP 1:
Project
Information

STEP 2:
Project
Baseline

STEP 3:
Project
Design

STEP 4:
Project
Verification

STEP 5:
Project
Certification

STEP 6:
Registration

STEP 7:
Issuance

STEP 8:
Project
Monitoring

Welcome to the Woodland Crediting Platform

This tool helps you turn your land management actions into conservation funding and communicate the many environmental benefits that your land provides. Land managers can map their projects, create multiple project designs, and manage their projects through approvals for select conservation programs.

Getting started with the WCP.

Would you like to begin developing conservation projects? Request access by sending an email to info@forestsforthebay.org

Woodland Credit Registry

Lorem ipsum dolor sit amet, consectetur adipiscing elit, sed do eiusmod tempor incididunt ut labore et dolore magna aliqua. Ut enim ad minim veniam, quis nostrud exercitation ullamco laboris nisi ut aliquip ex ea commodo consequat. Duis aute irure dolor in reprehenderit in voluptate velit esse cillum dolore eu fugiat nulla pariatur. Excepteur sint occaecat cupidatat non proident, sunt in culpa qui officia deserunt mollit anim id est laborum.

[View credits](#)

Still Have Questions?

How It All Works...



Use the tabs above to learn how the WCP can help you. When you are ready to use the tool, email us at info@forestsforthebay.org.

About the Forests for the Bay

Forests for the Bay is a free, voluntary membership program made up of small and medium sized landowners. Forests for the Bay provides woodland management training, eases woodland owner access to conservation funding, and develops educational initiatives. Forests for the Bay is managed by the Alliance for the Chesapeake Bay.

TOOLS: PROJECT REGISTRY



Woodland Crediting Platform

Log in ▶

STEP 1:
Project
Information

STEP 2:
Project
Baseline

STEP 3:
Project
Design

STEP 4:
Project
Verification

STEP 5:
Project
Certification

STEP 6:
Registration

STEP 7:
Issuance

STEP 8:
Project
Monitoring

Forest for the Bay Credit Registry

Lorem ipsum dolor sit amet, consectetur adipisicing elit, sed do eiusmod tempor incididunt ut labore et dolore magna aliqua. Ut enim ad minim veniam, quis nostrud exercitation ullamco laboris nisi ut aliquip ex ea commodo consequat. Duis aute irure dolor in reprehenderit in voluptate velit esse cillum dolore eu fugiat nulla pariatur. Excepteur sint occaecat cupidatat non proident, sunt in culpa qui officia deserunt mollit anim id est laborum.

Lorem ipsum dolor sit amet, consectetur adipisicing elit, sed do eiusmod tempor incididunt ut labore et dolore magna aliqua. Ut enim ad minim veniam, quis nostrud exercitation ullamco laboris nisi ut aliquip ex ea commodo consequat. Duis aute irure dolor in reprehenderit in voluptate velit esse cillum dolore eu fugiat nulla pariatur. Excepteur sint occaecat cupidatat non proident, sunt in culpa qui officia deserunt mollit anim id est laborum.


Project Name	Credit Type	Serial Number	Estimated Credits	Issuance Source	Issuance Dates
TEST – Woodcock Farms	Maryland Critical Area Program: Forest	A101 B555	38.00 credits	FFB DRS	02/27/2015 02/28/2014
TEST – Woodcock Farms	Maryland Forest Conservation Act	A103 ---	18.50 credits	FFB ---	02/25/2014 ---
Ryan's test project	Maryland Critical Area Program: Forest	23123123	110.00 credits	lorem ---	02/17/2014 ---
Ryan's test project	Maryland Critical Area Program: Forest interior dwelling species habitat	234234324 ---	123.00 credits	lorem ---	02/20/2014 ---
Ryan's test project	WQ: Upland Forest: Nitrogen	23423423423423 ---	782 lbs	lorem ---	02/28/2014 ---
Ryan's test project	WQ: Upland Forest: Phosphorus	23423423423423 ---	72 lbs	lorem ---	02/28/2014 ---
Ryan's test project	WQ: Upland Forest: Sediment	23423423423423 ---	38,070 lbs	lorem ---	02/28/2014 ---
RYAN TEST SINGLE	WQ: Riparian Forest: Nitrogen	12312312312 12312312312	28 lbs	First source Second source	--- ---
RYAN TEST SINGLE	WQ: Riparian Forest: Phosphorus	12312312312 12312312312	0 lbs	First source Second source	--- ---
RYAN TEST SINGLE	WQ: Riparian Forest: Sediment	12312312312 12312312312	323 lbs	First source Second source	--- ---
RYAN TEST SINGLE	WQ: Riparian Forest: Nitrogen	---	79 lbs	---	---
RYAN TEST SINGLE	WQ: Riparian Forest: Phosphorus	---	1 lbs	---	---
RYAN TEST SINGLE	WQ: Riparian Forest: Sediment	---	136 lbs	---	---

Forests for the Bay: Keeping woodlands healthy

TOOLS: CONNECTIONS

Create an Account | Login

Bay Bank™
The Chesapeake's
Conservation Marketplace



News

About the Bay Bank

Contact us

Marketplace

Tools

Education

Here's how Bay Bank works for...

Landowners

Service providers

Credit buyers

1

Run a free **LandServer** property report to determine your eligibility for programs and markets.

2

Open a Bay Bank **Account**.

3

Browse the **Market Education Guide** to learn all about your available opportunities.

4


Post an "expression of interest" on the **marketplace**.

5

Choose a **service provider** to develop your project.


6

Buyers will contact you via email.




For landowners...

- Benefits and tools for landowners
- Add your project
- Get bids from service providers



For service providers...

- Benefits and tools for service providers
- Add your company

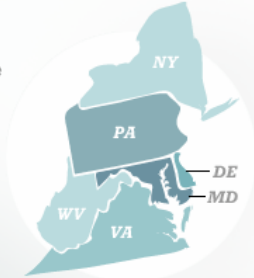


For buyers...

- Benefits and tools for buyers of ecosystem service credits
- Search the marketplace

Browse the marketplace by state

Delaware (1)
New York (0)
Maryland (12)
Pennsylvania (0)
Virginia (0)
West Virginia (1)



Find credits for sale by...

State:

Credit types:

Listing types:

New marketplace listings

Forest Conservation Charles County, Maryland	\$1.00 (Negotiable)
Habitat Conservation Garrett County, Maryland	\$240,000.00
Forest Conservation Prince George's County, Maryland	\$6,560,000.00
Water Quality Protection	\$1.00