

Non-Farm Fertilizer Sales Statistics

Urban Stormwater Workgroup 05192015

Matt Johnston
University of Maryland
CBPO Non-Point Source Data Analyst

AAPFCOFertilizer Sales Statistics

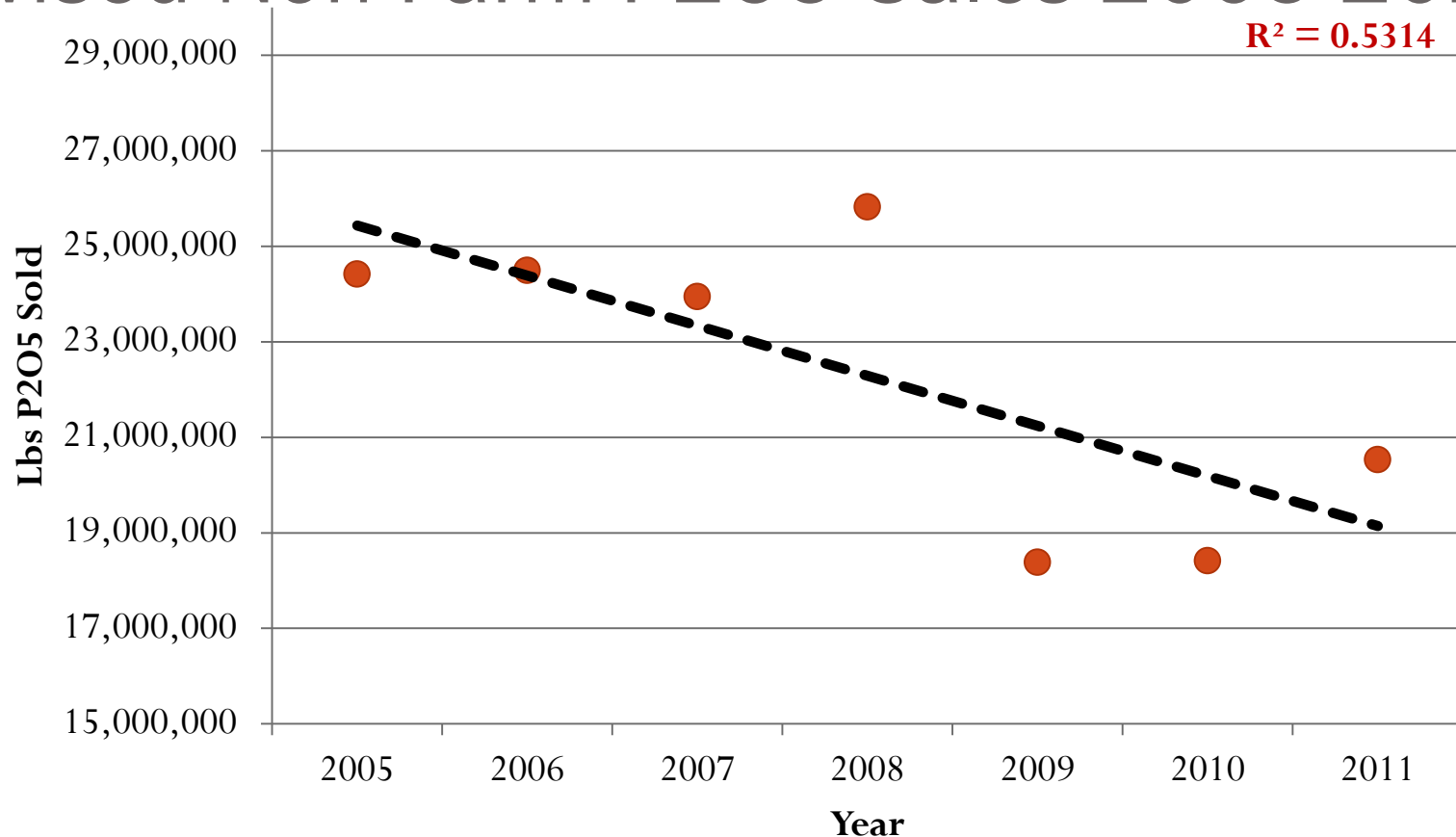
Raw Non-Farm P2O5 Lbs Sold within CBW Counties

State	2005	2006	2007	2008	2009	2010	2011
DE	1,609,997	897,097	1,042,099	553,664	253,003	122,570	238,671
MD	7,933,466	7,475,611	7,620,047	0	0	0	13,909,439
NY	1,561,586	1,728,256	1,687,570	1,224,201	618,150	682,269	1,096,931
PA	5,154,196	5,076,320	14,111,562	7,887,761	2,716,948	2,141,839	1,462,512
VA	8,157,048	9,320,239	7,115,583	6,965,904	4,032,363	3,130,901	3,827,528
WV	47,227	84,394	88,196	2,767	3,875	9,732	24,524
Totals	24,463,519	24,581,918	31,665,056	16,634,296	7,624,338	6,087,311	20,559,605

Adjusted Non-Farm P2O5 Lbs Sold within CBW Counties

State	2005	2006	2007	2008	2009	2010	2011
DE	1,609,997	897,097	1,042,099	553,664	253,003	122,570	238,671
MD	7,933,466	7,475,611	7,620,047	9,192,395	10,764,743	12,337,091	13,909,439
NY	1,561,586	1,728,256	1,687,570	1,224,201	618,150	682,269	1,096,931
PA	5,154,196	5,076,320	6,482,040	7,887,761	2,716,948	2,141,839	1,462,512
VA	8,157,048	9,320,239	7,115,583	6,965,904	4,032,363	3,130,901	3,827,528
WV	NA	NA	NA	NA	NA	NA	NA
Totals	24,416,292	24,497,524	23,947,338	25,823,925	18,385,206	18,414,670	20,535,081

Revised Non-Farm P2O5 Sales 2005-2011



Good News: There is a statistically significant decreasing trend in non-farm fertilizer sales (at least in reporting).

Bad News: The bad news is that this represents a 25% decrease, not a 60 or 70% decrease.

Options for 2016 Progress Reporting

- For 2016 Progress (for which data will be collected between July 1, 2015 and June 30, 2016), states are required to justify the automatic reductions in fertilizer by tracking and reporting fertilizer sales.
- Option 1: States report no new information, and take the percent reduction calculated from AAPFCO data. This likely won't represent a 60-70% reduction.
- Option 2: States report more detailed sales statistics to the CBPO using a reporting template.

Option 2

County	State	Year	Farm	Non-Farm	Unknown	Type	Tons	N Concentration	P2O5 Concentration
Kent	DE	2015	0	1	0	Superphosphate 20	100	0	0.2
Kent	DE	2015	0	1	0	Superphosphate 46	250	0	0.46
Kent	DE	2015	0	1	0	Diammonium Phosphate	400	0	0.1

- States should report at least three years worth of data (2013, 2014 and 2015) to show a trend in sales.
- States should report: county of sale; state of sale; year of sale; type of sale (farm, non-farm, unknown); type of fertilizer sold (e.g., superphosphate 20; total tons of that type sold in county in year; N and P2O5 concentrations within fertilizer.
- CBPO will multiply tons by 2,000 lbs and by concentration to calculate the total pounds sold by county by year.

Long-Term Reporting

- States should improve tracking and reporting within the fertilizer reporting database.
- States should make efforts to ensure that ALL fertilizer sales are captured through this database and reported correctly as farm vs. non-farm.

Per Acre Application Rate in Phase 6

- It was hoped that the AAPFCO sales data could provide a per acre application rate to turf grass acres in the Phase 6 Model which changed over time.
- Urban Stormwater Workgroup should decide if this data can be used, and if not, what the per acre application rate should be in each year (1985 through the present).