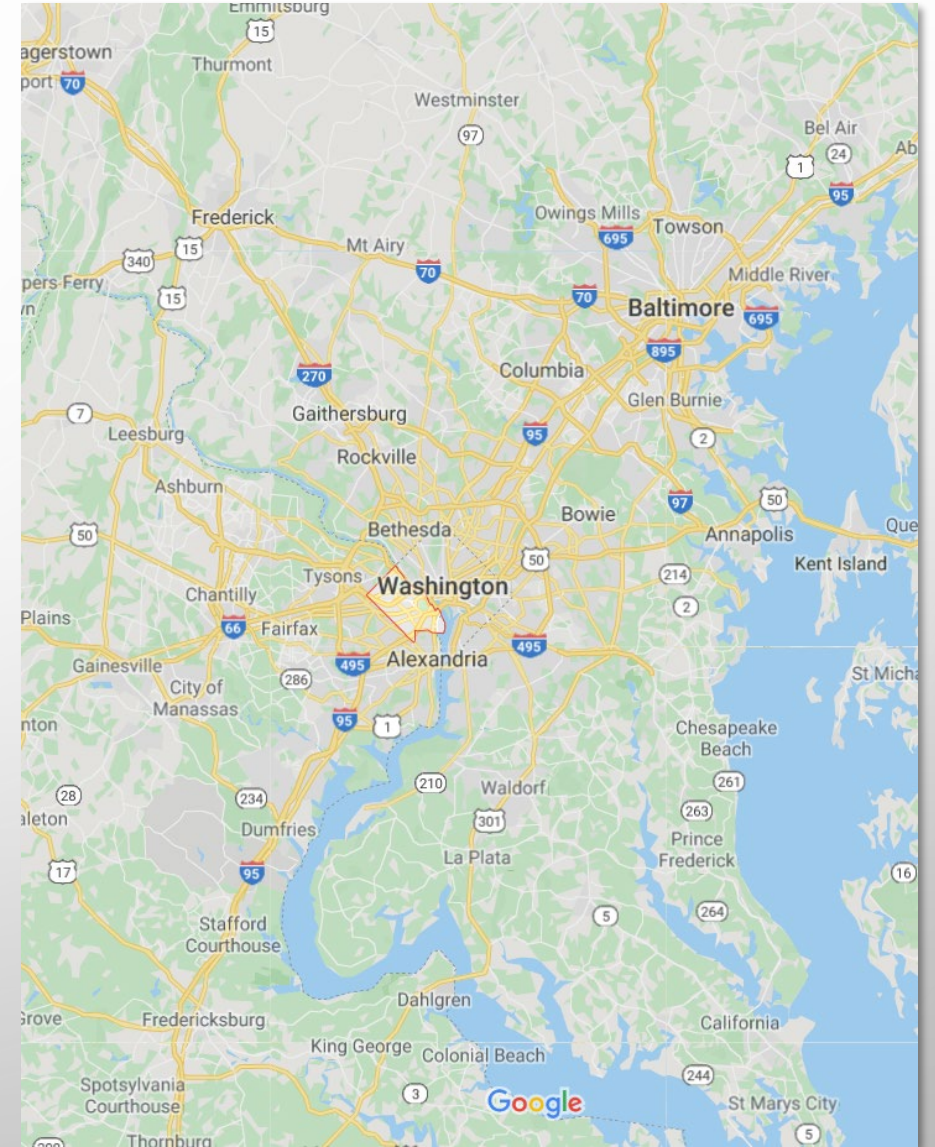


MANAGING WATER FROM THE FRONT LINES UNDER A CHANGING CLIMATE: A LOCAL GOVERNMENT PERSPECTIVE

CHESAPEAKE BAY PROGRAM
URBAN STORMWATER WORKGROUP
OCTOBER 20, 2020

JASON PAPACOSMA
WATERSHED PROGRAMS MANAGER
DEPARTMENT OF ENVIRONMENTAL SERVICES

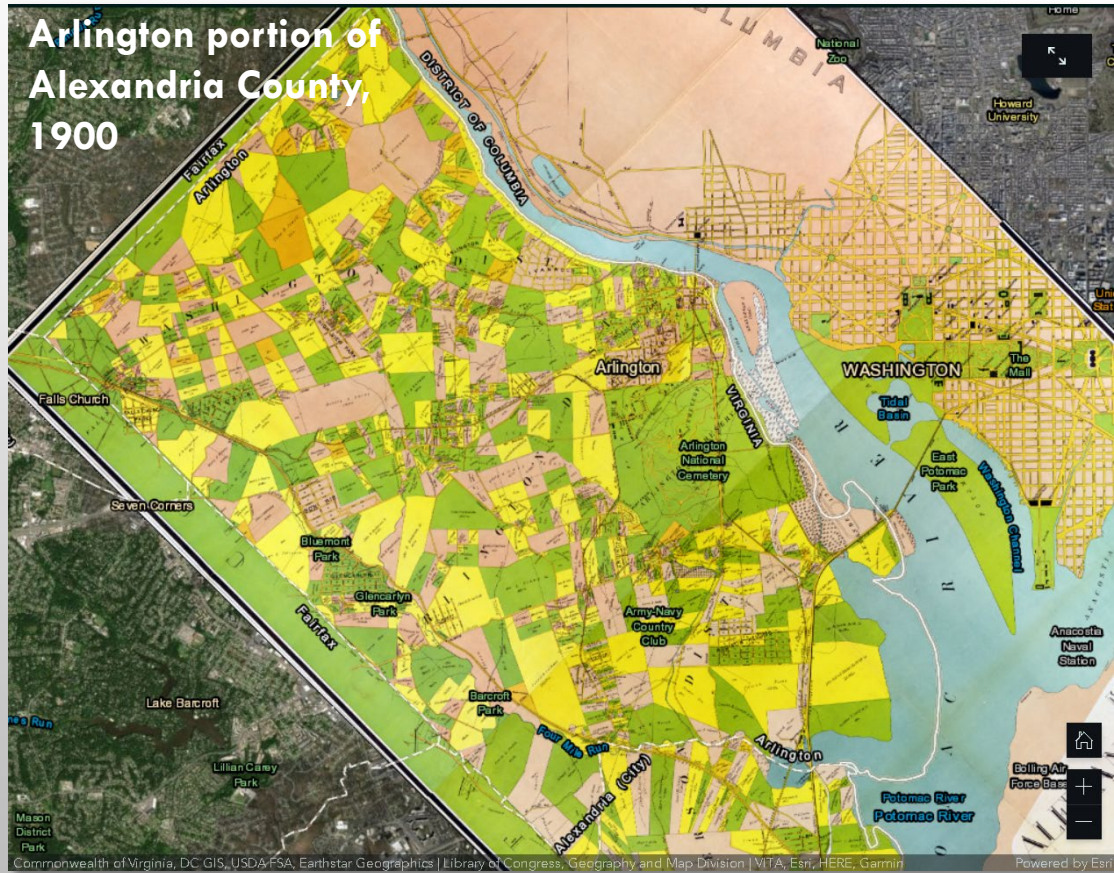


**MANAGING WATER IS A
PRIORITY NEED AND
GROWING CHALLENGE FOR
LOCAL GOVERNMENTS IN
THE COG REGION**

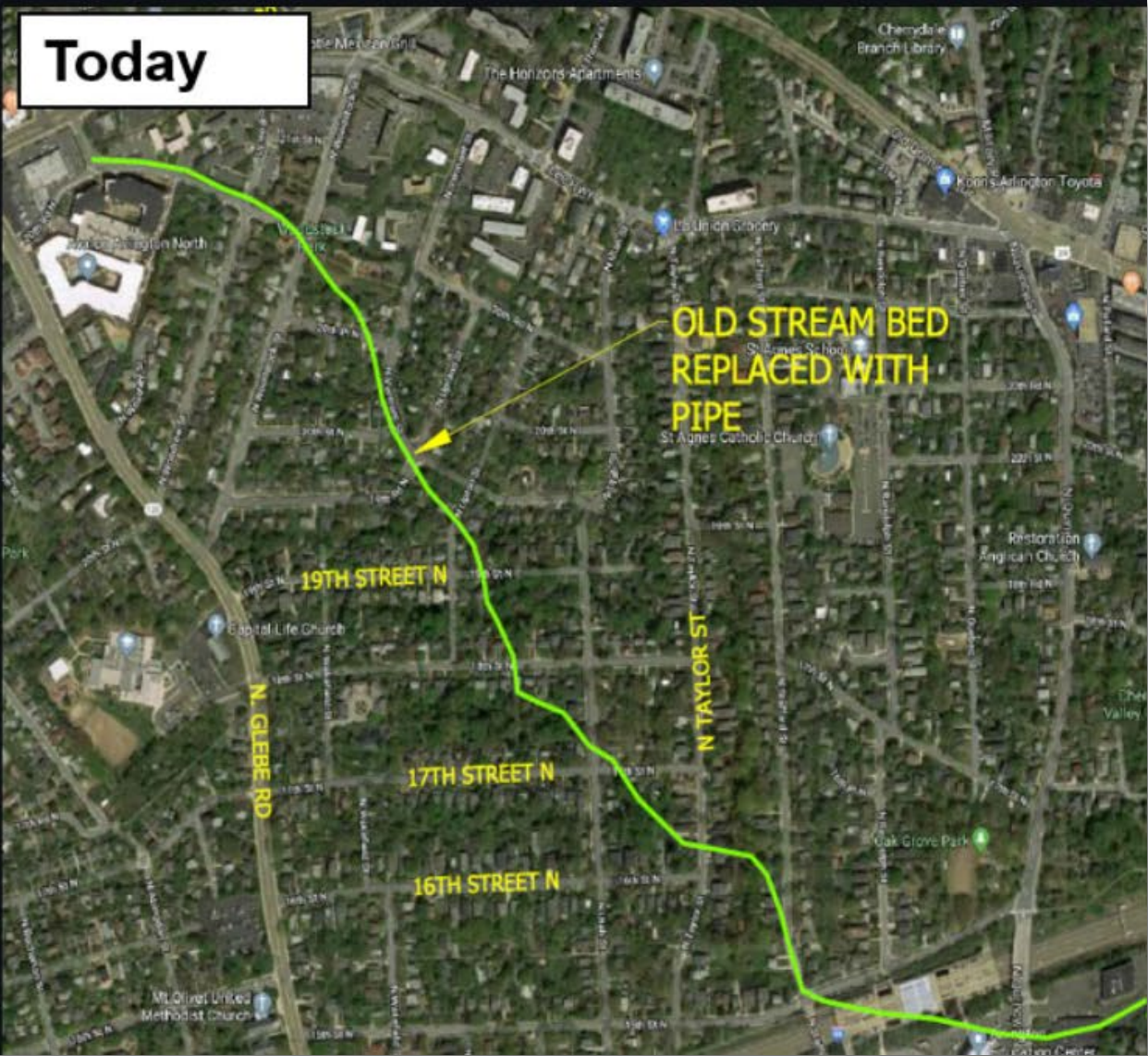
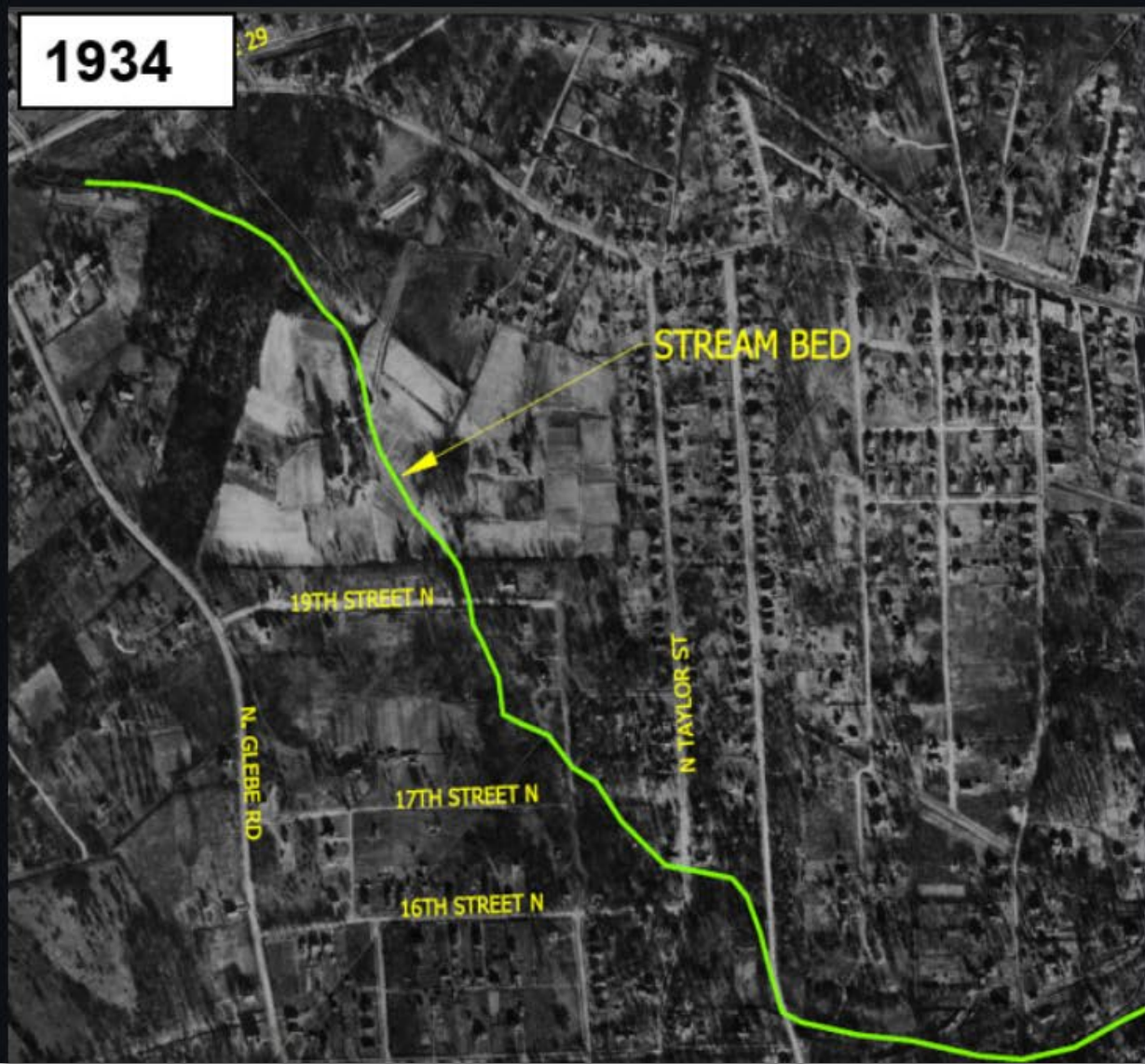


Development
Flooding
Regulations
Wastewater
Climate change
Water quality
Water
Population growth
Stormwater
Drinking water
Sea level rise

ARLINGTON, THEN AND NOW



CHALLENGE: ACUTE FLOODING



**FLOODING
WITHOUT
'OVERLAND
RELIEF' TO
CONVEY
FLOODWATERS
SAFELY**



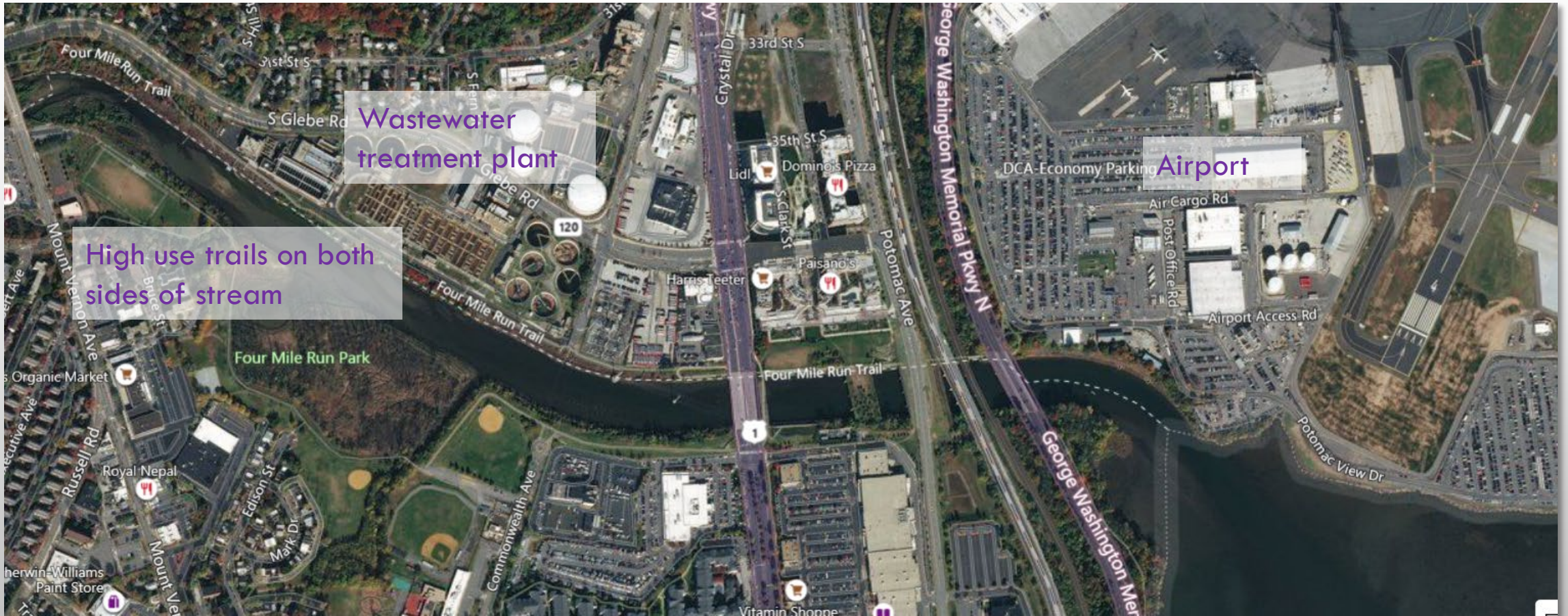
**INUNDATION FROM
INTERIOR FLOODING**



July 8, 2019

100 to 500+ year rainfall

CHALLENGE: SEA LEVEL RISE



CHALLENGE: STREAMS, WATER QUALITY, AND REGULATORY COMPLIANCE

- CONTINUED EROSION THREATENING INFRASTRUCTURE, PUBLIC SAFETY, AND WATER QUALITY
- GROWING CHEMICAL AND BIOLOGICAL IMPAIRMENTS (E.G., SALT, AQUATIC ECOLOGY)
- BAY TMDL



WE'RE MAKING SIGNIFICANT INVESTMENTS

- RISK ASSESSMENT PLANNING AND FLOOD RISK REDUCTION PROJECTS
- STREAM RESTORATION AND REPAIR
- GREEN INFRASTRUCTURE
- MITIGATING DEVELOPMENT ACTIVITY IMPACTS
- STATE LEADER IN ADVANCED WASTEWATER TREATMENT



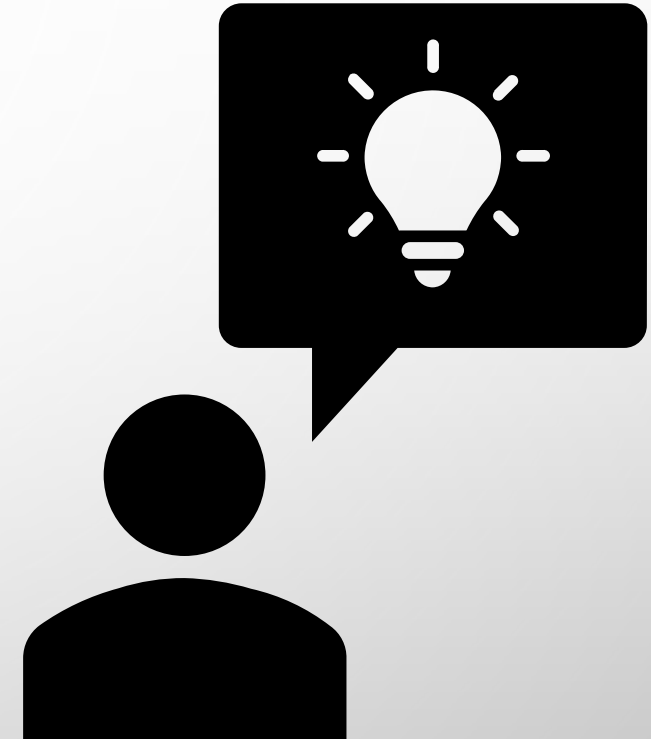
WHERE WE GO FROM HERE

- ARE AGENCIES THAT MANAGE WATER IN SYNC WITH EACH OTHER?
- IS THE GROWING URGENCY OF ADDRESSING CLIMATE CHANGE TAKEN INTO ACCOUNT IN REGULATORY TIMELINES?
- HOW CAN LOCAL GOVERNMENTS BE GIVEN THE FLEXIBILITY TO BALANCE MULTIPLE PRIORITIES?
- ARE WE TAKING ADVANTAGE OF OPPORTUNITIES FOR SMARTER INVESTMENTS?



NEW REALITIES REQUIRE CHANGE TO RE-POSITION FOR SUCCESS

- **INTEGRATION.** OF WATER AND RISK MANAGEMENT AT ALL LEVELS OF GOVERNMENT.
- **TIME.** REGULATORY FRAMEWORKS AND TIMELINES NEED TO ADAPT.
- **LOCAL CUSTOMIZATION.**
- **FUNDING AND SMART INVESTMENTS.**
 - MORE FEDERAL AND STATE RESOURCES
 - TARGET INCREASED EFFORTS FOR MAXIMUM BENEFIT FOR PEOPLE AND THE ENVIRONMENT



QUESTIONS

