


The background is a light gray gradient. It is decorated with several realistic water droplets of various sizes, some at the top and some at the bottom. In the upper center, there is a faint, circular logo that appears to be the United Nations emblem.

POINT SOURCE DATA

PROJECT UPDATE AND JURISDICTION OUTREACH

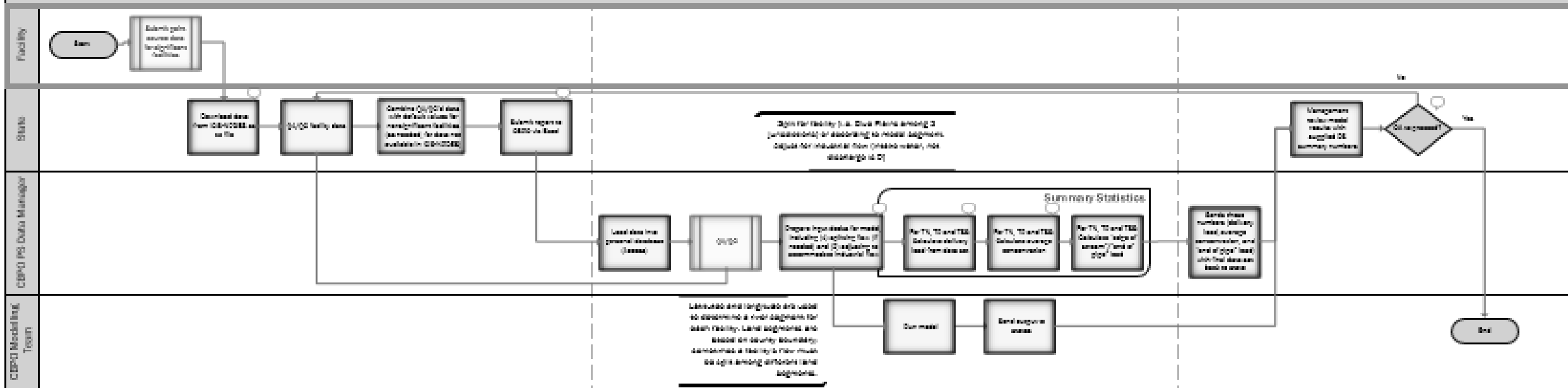


Outline

- Update of Project Results
 - Challenges
 - Vision
 - Discussion Items
 - Proposed Solutions
 - Resources
 - Timeline
- 

PROJECT RESULTS

Data Flow for Point Source Data under NPDES Permits for Reporting to Chesapeake Bay Program Office (CBPO)





Outline

- Update of Project Results
 - **Challenges: Data Quality and Data Transparency**
 - Vision
 - Discussion Items
 - Proposed Solutions
 - Resources
 - Timeline
- 



Outline

- Update of Project Results
 - Challenges
 - **Vision: Consistent, QA/QC, Single Source, Reduced LOE**
 - Discussion Items
 - Proposed Solutions
 - Resources
 - Timeline
- 



Outline

- Update of Project Results
- Challenges
- Vision
- **Discussion Items**
 - Proposed Solutions
 - Resources
 - Timeline





Outline

- Update of Project Results
 - Challenges
 - Vision
 - Discussion Items
 - **Proposed Solutions**
 - Resources
 - Timeline
- 



Outline

- Update of Project Results
 - Challenges
 - Vision
 - Discussion Items
 - Proposed Solutions
 - **Resources**
 - Timeline
- 



Outline

- Update of Project Results
 - Challenges
 - Vision
 - Discussion Items
 - Proposed Solutions
 - Resources
 - **Timeline**
- 

QUESTIONS?

- **One-on-one** follow-up conversations at a later time
- At this time, feedback about framework or process?
- General Concerns?

Laura Free

Free.laura@epa.gov

202-564-2653