



Maryland Department of the Environment

Historic Minor Industrial Load Estimation

**CBP Wastewater Treatment Work Group
July 7, 2015**

**Maryland Department of the Environment
Science Services Administration**

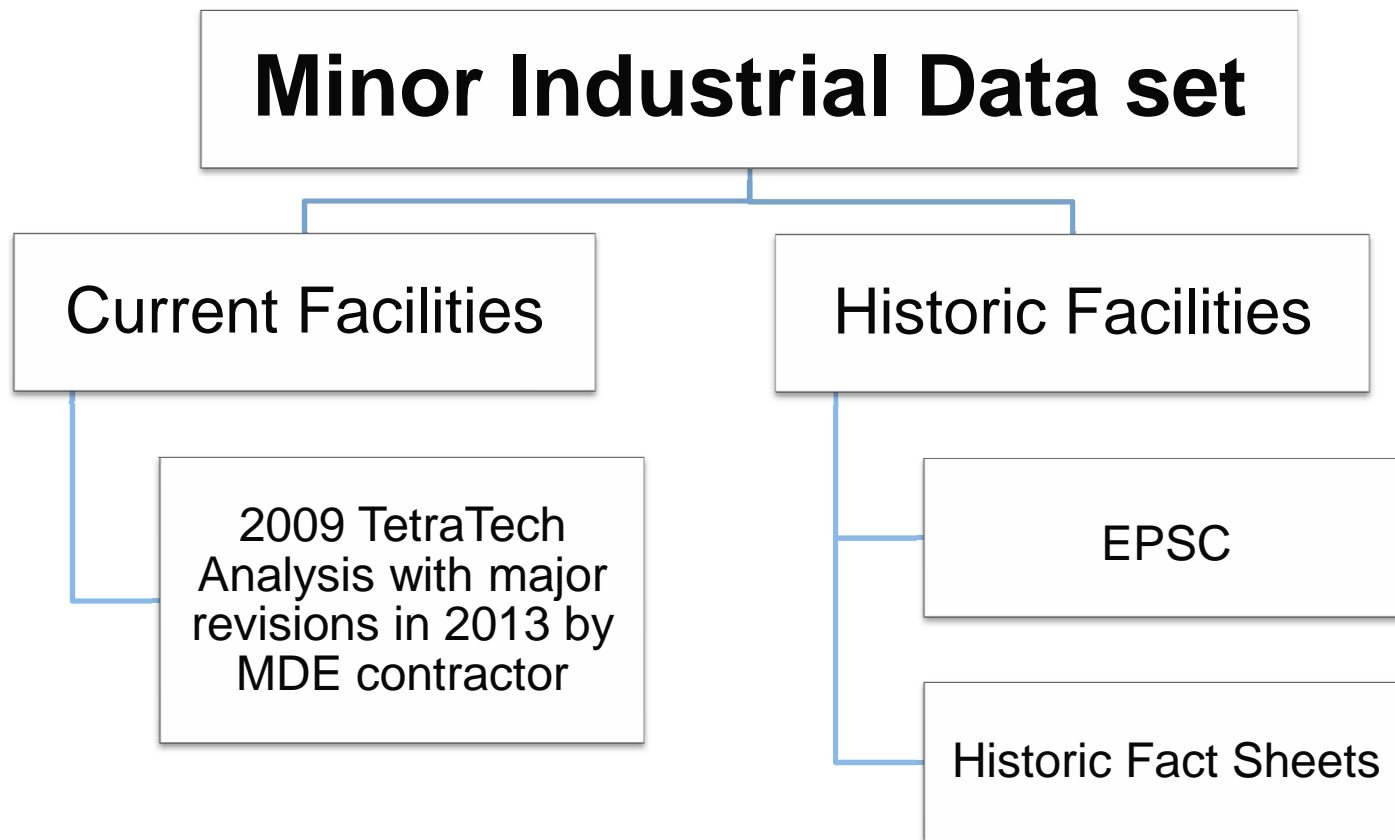
Shannon McKenrick – shannon.mckenrick@maryland.gov
Greg Busch – gregory.busch@maryland.gov



Goal

- Complete data set of historic (1985-2012) individually permitted minor industrial TN/TP/TSS loads for model calibration purposes
- Information needed for each facility:
 - **Step 1:** Develop a comprehensive list of facilities operating in Maryland from 1985-2014
 - Identifying information (NPDES, State Number, SIC Code, Location)
 - **Step 2:** Determine the time period when each facility was operating
 - Start/End Dates
 - **Step 3:** Estimate the annual flow (MGD)
 - Flow (MGD)
 - **Step 4:** Estimate effluent concentrations
 - TN/TP/TSS Concentrations
 - **Step 5:** Evaluate data set to see if it makes sense

Step 1: Determining Historic & Current Facilities



Step 2: Start/End Date

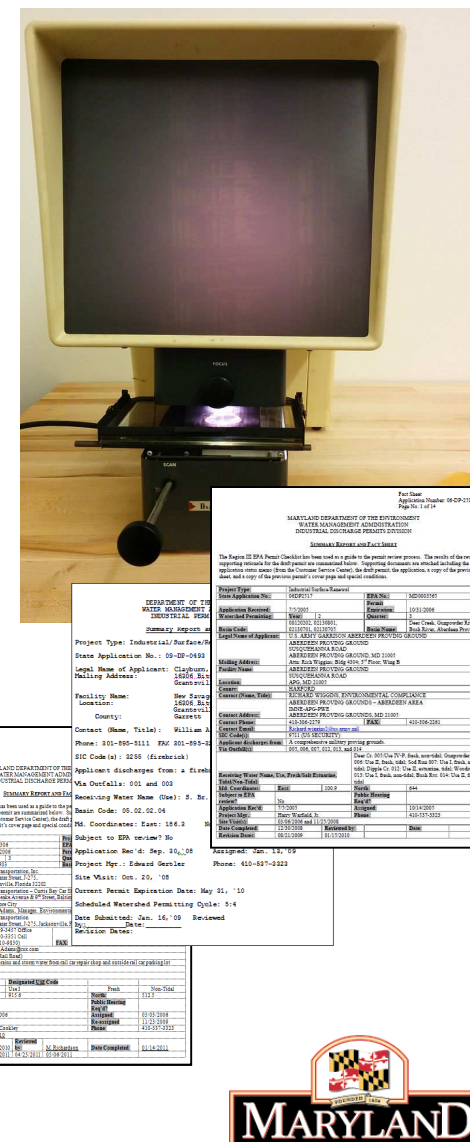
Data Hierarchy

- ICIS: Original Issue Date
- EPSC: Earliest/Latest Permit issue/expiration date
 - If EPSC issue date 1990-1999: Start date is estimated to be 1985
- Permit Fact sheet issue/expiration dates

Step 3: Flow Sources

Data Hierarchy

- Current data set – 2013 & 2014 progress data sets
 - Based on detailed discharge estimates by MDE permit writers
 - Only applicable for current facilities
- Fact Sheets/Permit Documentation
- Billing Information
- Average DMR (if available)
- Average flow of facilities with same SIC code
- Archived permits in microfiche



Step 4: TN/TP/TSS Concentration Sources

Data Hierarchy

- Current data set – 2013 & 2014 progress data sets
 - Only applicable for current facilities
- Estimate concentration by SIC code
 - Average Concentration of current facilities with the same SIC code
 - Group similar SIC codes
 - Ex. SIC Code 7538 – “Gen Auto Repair”
TN/TP/TSS values are from 7539 - “Auto Repair”
 - Tetra Tech concentrations by SIC code estimates

3731 SHIP BLDG

3732 BOAT BLDG

3732 BOAT BLDG

3732 BOAT BLDG

5982 FUEL DEALERS

5983 FUEL OIL DEALER

5983 FUEL OIL DEALER

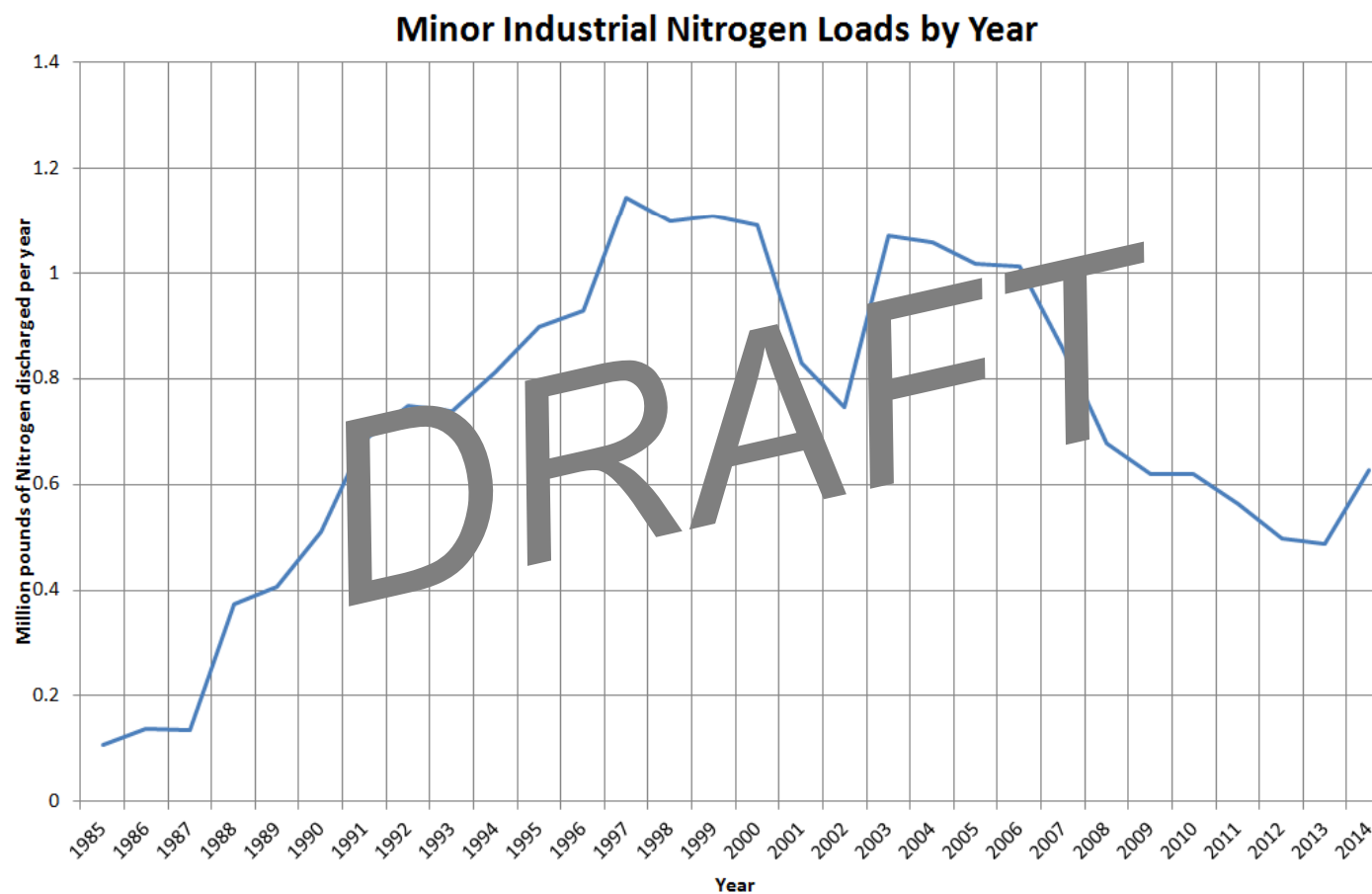
7211 LAUNDRY SERVICE

7218 LAUNDRIES

7219 LAUNDRY SERVICE

Step 5: Evaluating the data set

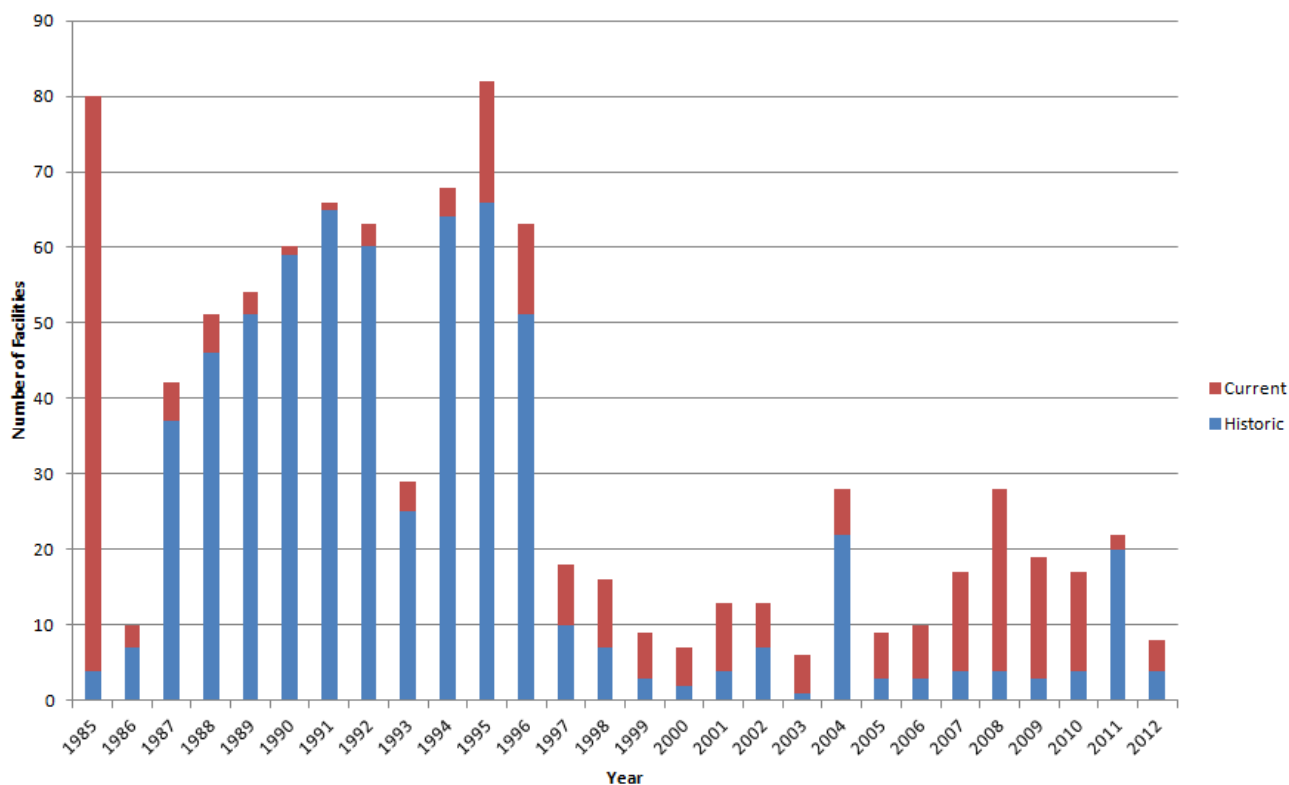
Initial Historic Facility Load Estimates



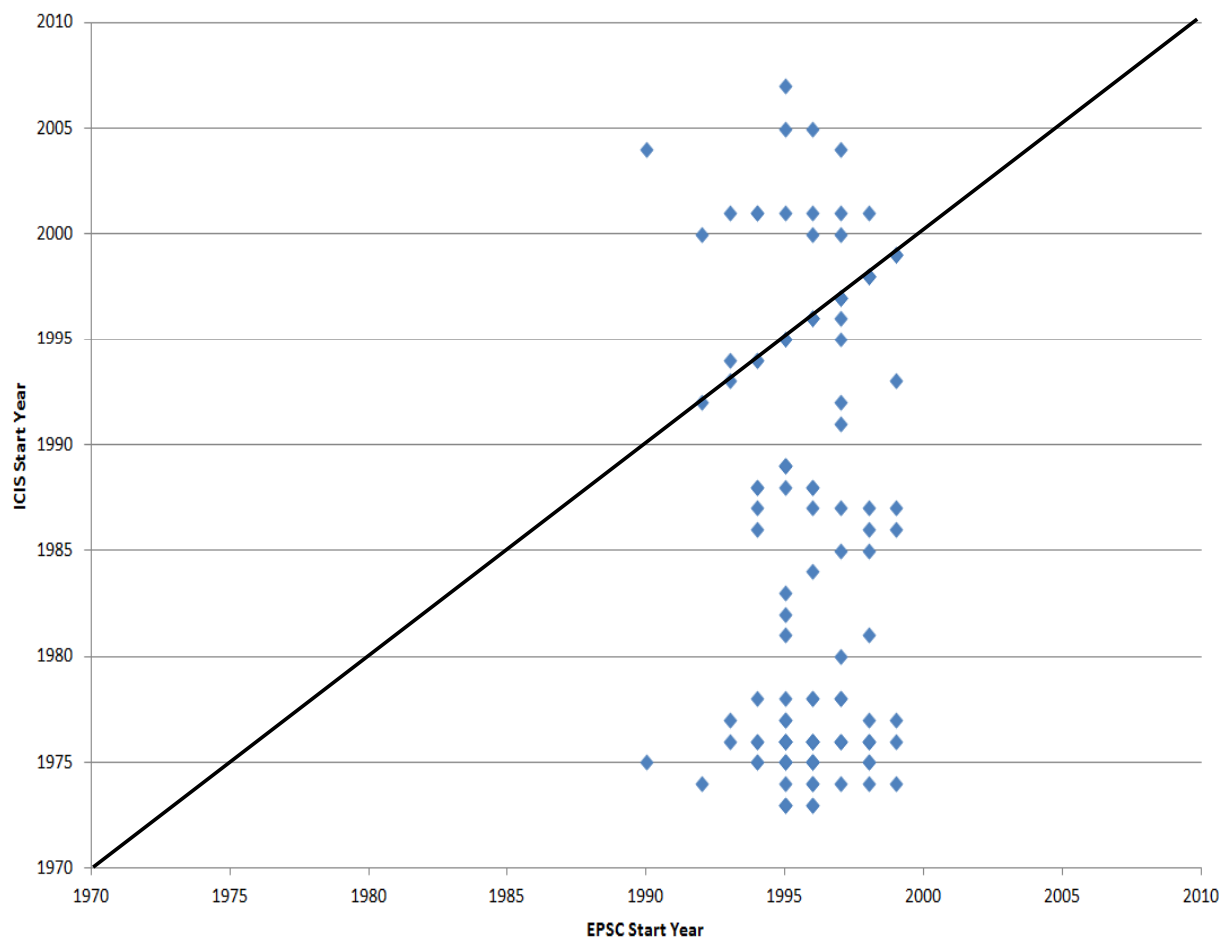
Minor Facilities Start Date by Year

Based on first date of issuance in either ICIS or EPSC

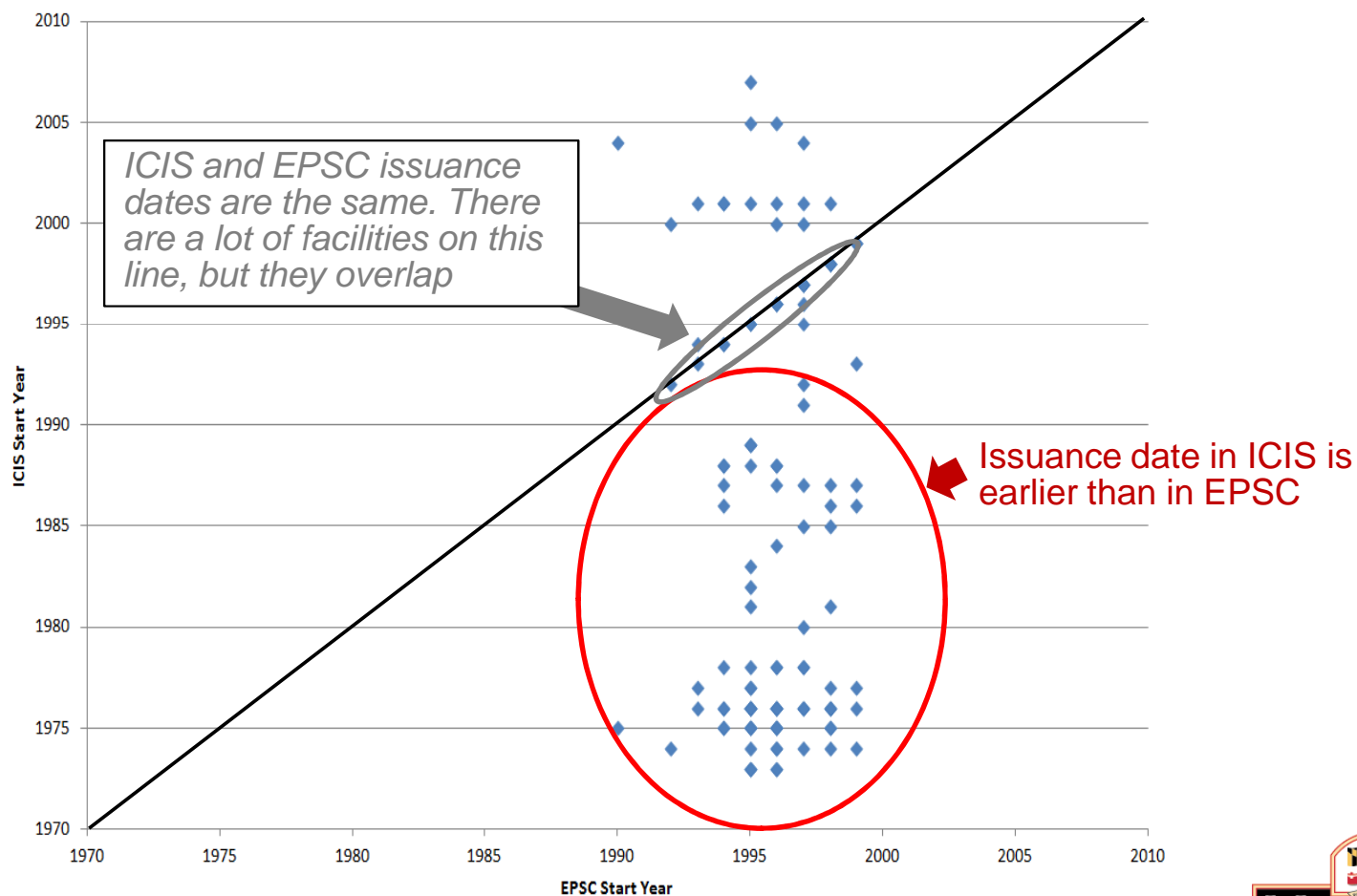
Minor Industrial Facilities Start Date by Year - Initial



EPSC and ICIS Start Dates for Current Permitted Minor Industrial Facilities



EPSC and ICIS Start Dates for Current Permitted Minor Industrial Facilities



Conclusions

- Attained load estimates for 90% of minor facilities
 - The missing facilities were likely not large load sources
 - Our efforts were put toward larger loaders
- Data quality and availability decreases as we go further back in time
- Next steps ...
 - The data requires some further analysis to explain trends
 - The loading increase in the late 1980s to early 1990s is likely the result of database limitations
 - MDE's permit database was developed in the early 1990s, so it appears that a lot of facilities opened up in the early 1990s
 - In reality, a lot of these facilities likely pre-dated that year