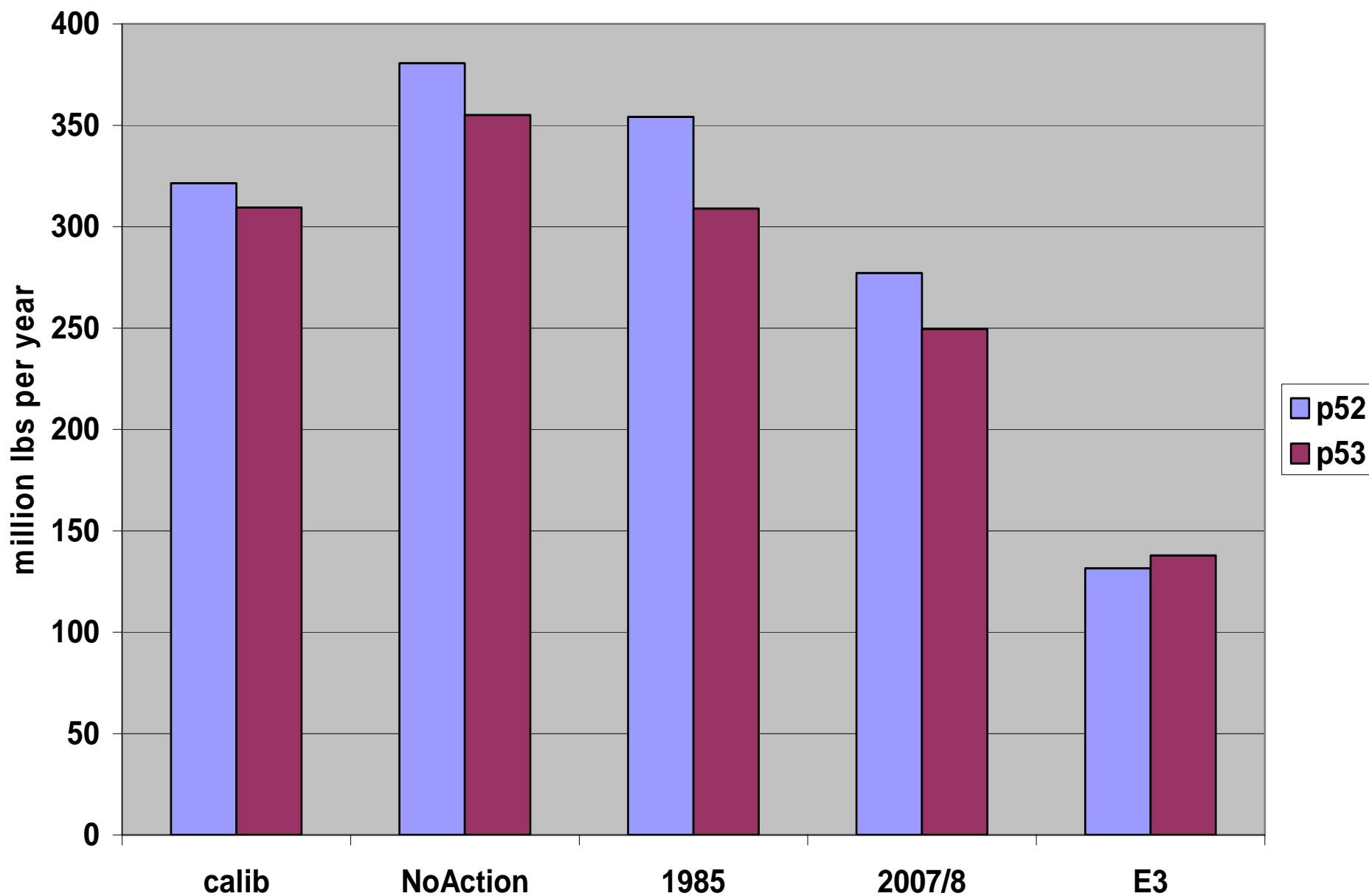


First Look at Draft Scenarios

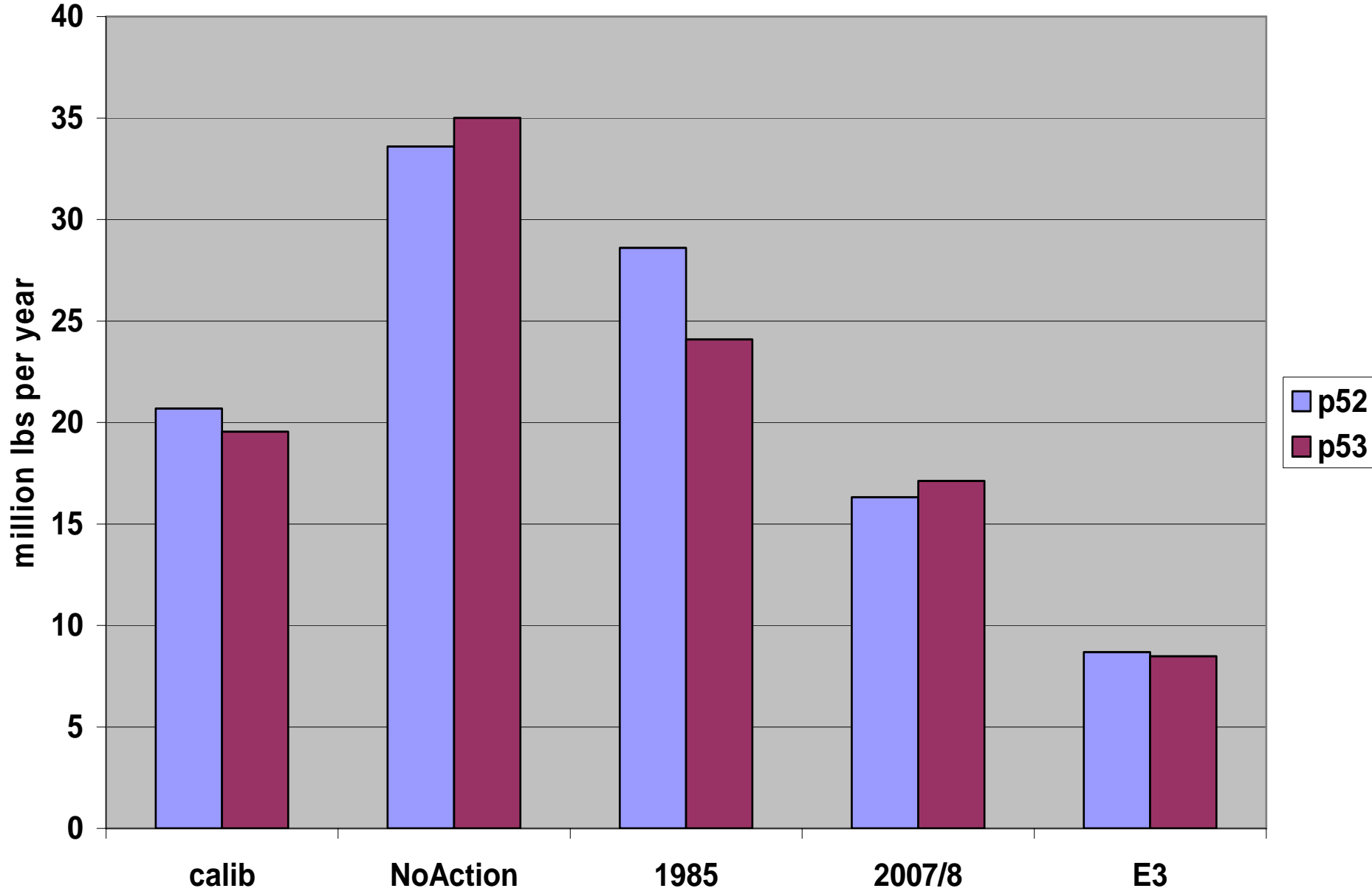
WQGIT

3/29/2010

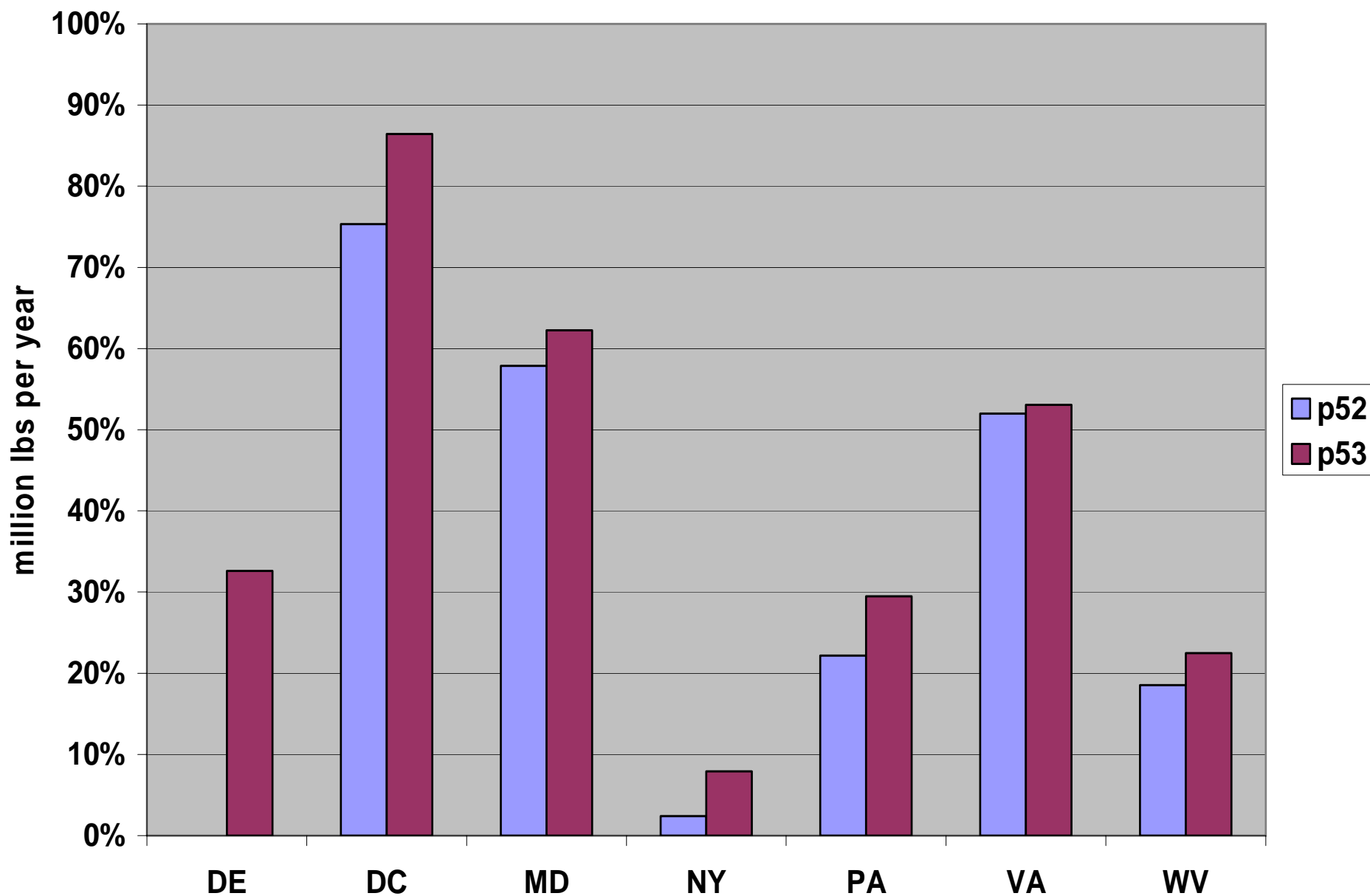
TN comparison phase 5.2 and 5.3



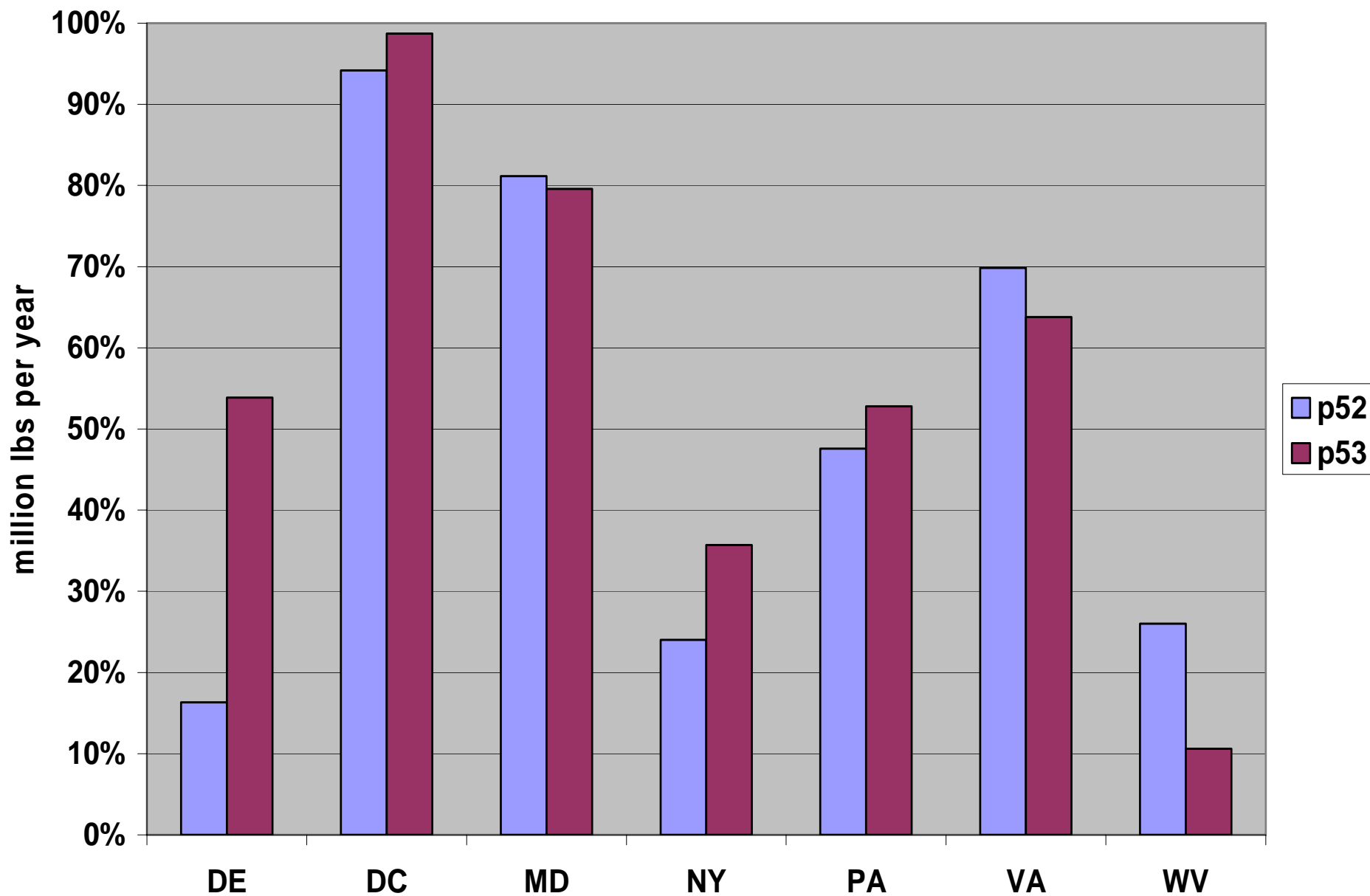
TP comparison phase 5.2 and 5.3



TN Progress 2008/2007 as a fraction of E3



TP Progress 2008/2007 as a fraction of E3



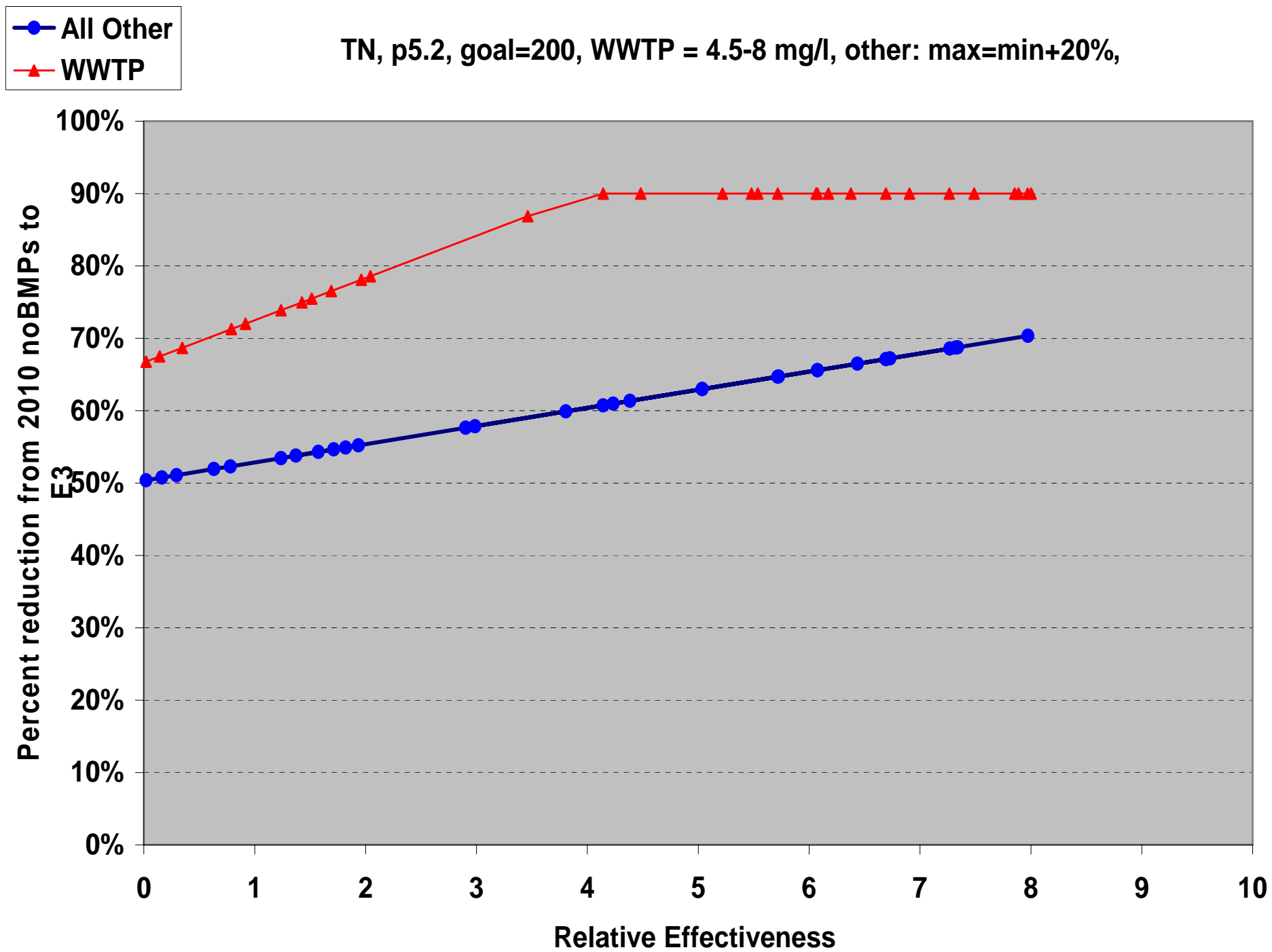
TN Load Comparison

	p52 calib	p53 calib	p52 NoAction	p53 NoAction	p52 1985AA	p53 1985AA	p52 2008AA	p53 2007AA	p52 E3	p53 E3
Esh DE	8.37	4.77	9.28	4.98	8.74	4.47	9.98	4.01	3.45	2.02
Esh MD	17.70	16.35	23.94	17.63	20.48	15.35	18.97	13.71	8.25	6.89
Esh VA	2.60	2.20	3.25	2.40	2.62	2.03	2.73	2.12	0.88	0.79
Esh PA	0.42	0.54	0.35	0.49	0.49	0.52	0.36	0.49	0.13	0.20
James VA	39.09	36.82	52.63	49.04	43.33	40.96	33.23	31.07	15.80	15.88
James WV	0.01	0.02	0.02	0.02	0.01	0.02	0.01	0.02	0.01	0.02
Potom DC	10.30	5.41	9.68	9.78	12.55	6.20	3.54	2.57	1.53	1.44
Potom MD	24.19	26.96	30.31	32.84	27.26	27.03	18.38	19.50	9.65	11.00
Potom VA	26.16	28.36	33.05	33.44	28.80	28.04	19.09	20.68	10.72	12.83
Potom PA	7.67	6.95	7.08	6.64	8.56	6.18	6.98	6.01	3.12	3.55
Potom WV	8.68	7.79	8.30	6.32	8.18	6.60	7.46	5.75	3.76	3.80
Rapp VA	9.65	8.35	10.61	9.16	10.54	8.17	8.21	7.34	4.33	4.35
Susq MD	1.53	2.02	1.35	1.74	1.85	2.05	1.23	1.59	0.61	0.86
Susq PA	118.08	118.86	120.82	118.57	125.45	110.48	104.08	99.94	49.09	56.59
Susq NY	16.31	15.02	16.36	10.93	15.32	13.48	16.16	10.58	7.78	6.51
Wsh MD	17.96	17.75	36.50	36.62	26.74	26.40	14.99	14.24	6.15	5.53
Wsh PA	0.02	0.04	0.01	0.04	0.02	0.04	0.01	0.03	0.00	0.01
Patux MD	4.30	3.86	6.57	6.00	4.54	3.82	3.51	3.04	2.15	1.89
York VA	8.34	7.37	10.54	8.41	8.61	6.99	8.20	6.83	4.05	3.73
Total	321.39	309.44	380.66	355.05	354.06	308.83	277.12	249.51	131.45	137.88

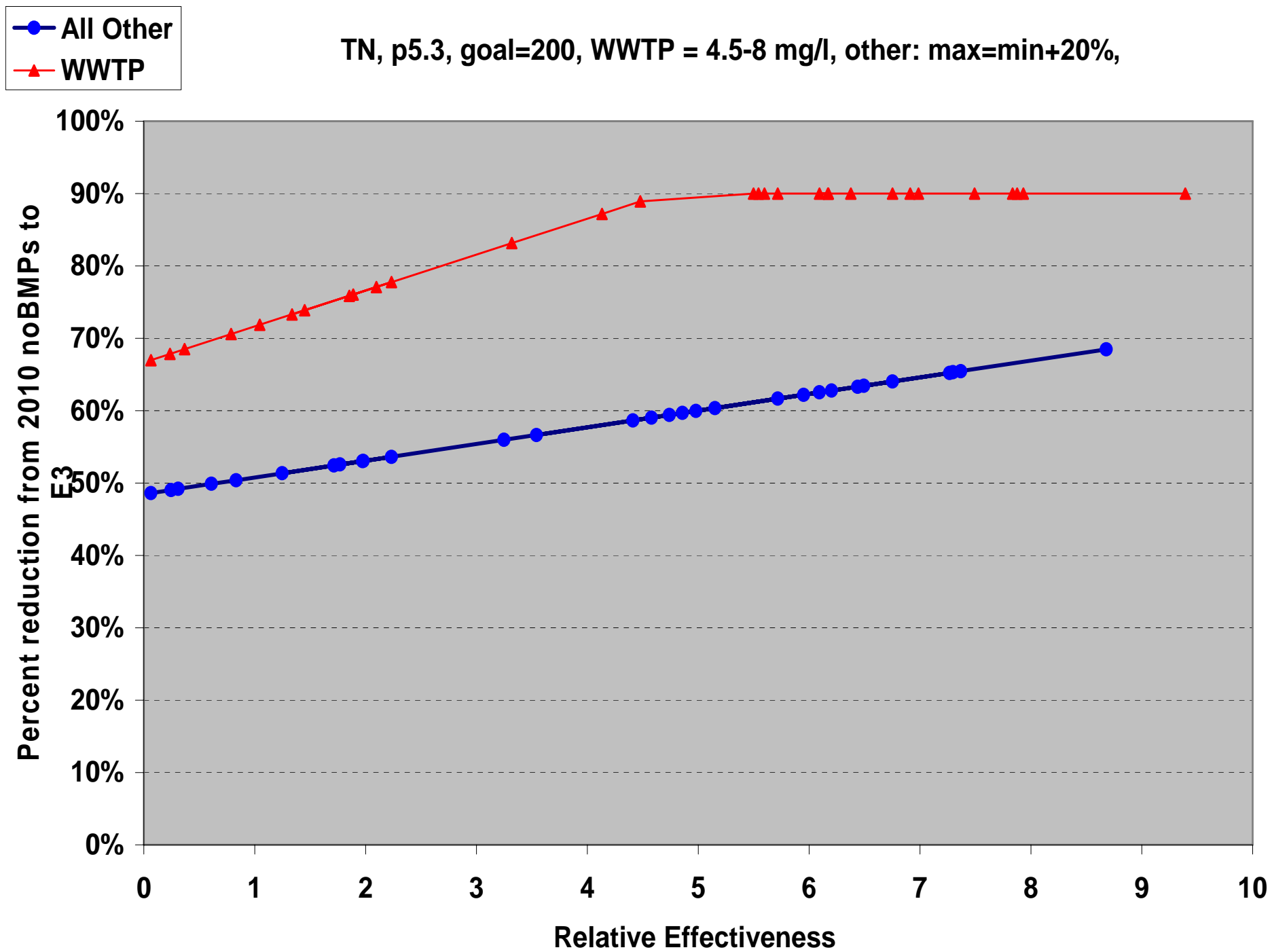
TP Load Comparison

	p52 calib	p53 calib	p52 NoAction	p53 NoAction	p52 1985AA	p53 1985AA	p52 2008AA	p53 2007AA	p52 E3	p53 E3
Esh DE	0.46	0.38	0.38	0.45	0.54	0.37	0.34	0.31	0.14	0.19
Esh MD	1.13	1.59	1.87	2.00	2.25	1.70	1.14	1.29	0.65	0.86
Esh VA	0.24	0.25	0.22	0.30	0.28	0.26	0.16	0.22	0.08	0.13
Esh PA	0.04	0.02	0.03	0.02	0.05	0.02	0.03	0.02	0.01	0.01
James VA	4.78	4.32	7.44	7.35	7.10	6.54	3.62	3.55	1.90	1.44
James WV	0.02	0.01	0.02	0.01	0.03	0.01	0.01	0.01	0.01	0.01
Potom DC	1.01	0.10	1.49	1.58	1.28	0.10	0.14	0.07	0.06	0.05
Potom MD	1.12	1.24	3.20	3.56	1.68	1.48	0.84	1.06	0.51	0.61
Potom VA	2.12	2.09	4.89	4.92	2.54	2.19	1.91	2.01	1.06	0.94
Potom PA	0.60	0.54	0.58	0.61	0.71	0.57	0.53	0.50	0.32	0.33
Potom WV	0.82	0.91	0.82	0.91	0.91	0.85	0.70	0.86	0.37	0.40
Rapp VA	1.31	1.24	1.25	1.42	1.42	1.29	0.85	1.17	0.52	0.58
Susq MD	0.06	0.07	0.06	0.07	0.11	0.09	0.05	0.06	0.03	0.04
Susq PA	3.93	3.79	5.02	5.25	5.00	4.44	3.42	3.37	1.84	1.77
Susq NY	1.09	0.98	0.97	0.97	1.27	1.06	0.83	0.78	0.39	0.43
Wsh MD	0.92	0.87	3.54	3.63	1.74	1.62	0.79	0.79	0.30	0.23
Wsh PA	0.00	0.00	0.00	0.00	0.00	0.00	0.00	0.00	0.00	0.00
Patux MD	0.30	0.36	0.80	0.83	0.50	0.48	0.28	0.33	0.12	0.12
York VA	0.76	0.76	1.03	1.12	1.21	1.03	0.66	0.70	0.35	0.34
Total	20.69	19.54	33.60	35.00	28.61	24.10	16.32	17.12	8.68	8.48

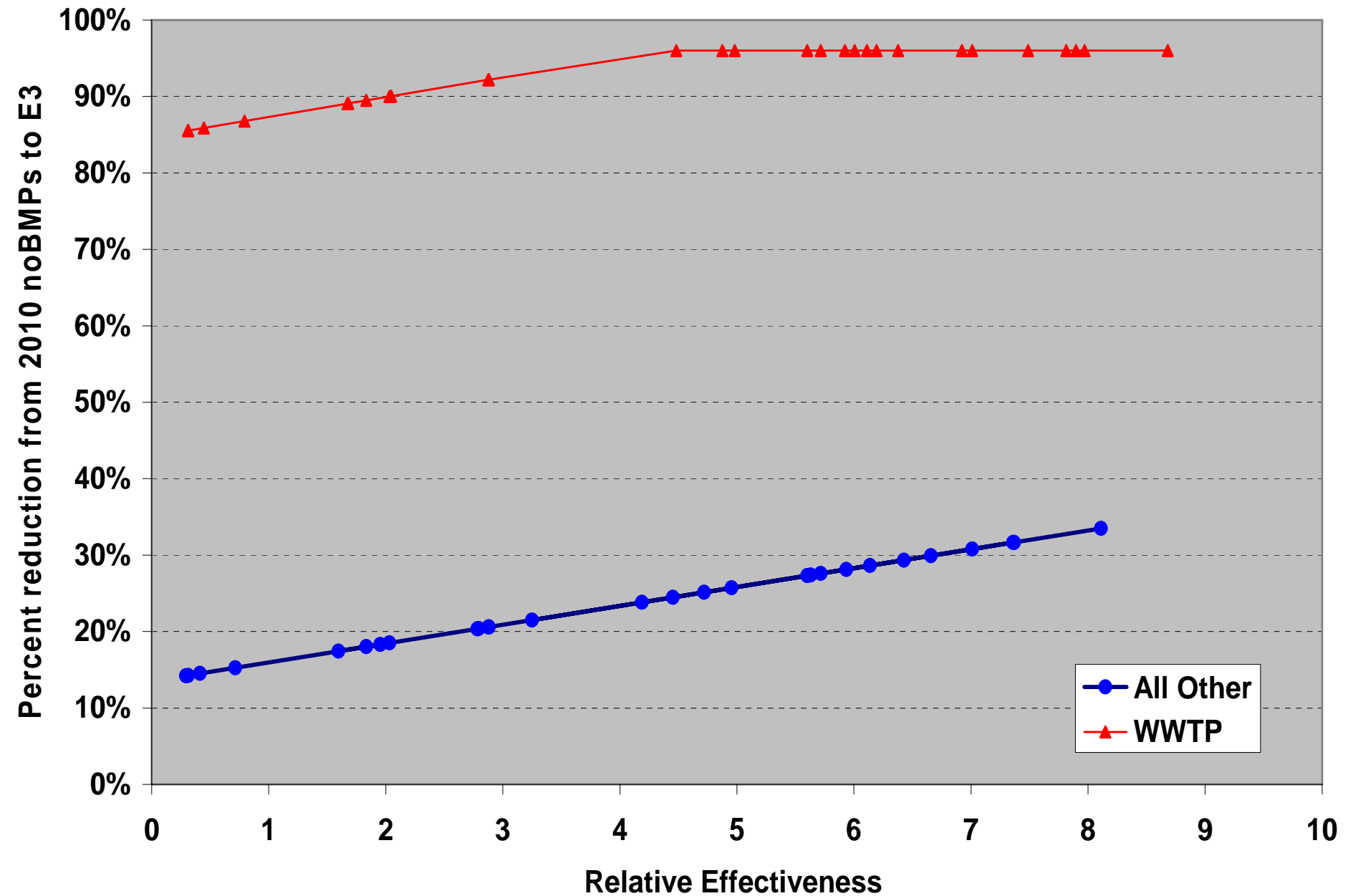
TN, p5.2, goal=200, WWTP = 4.5-8 mg/l, other: max=min+20%,



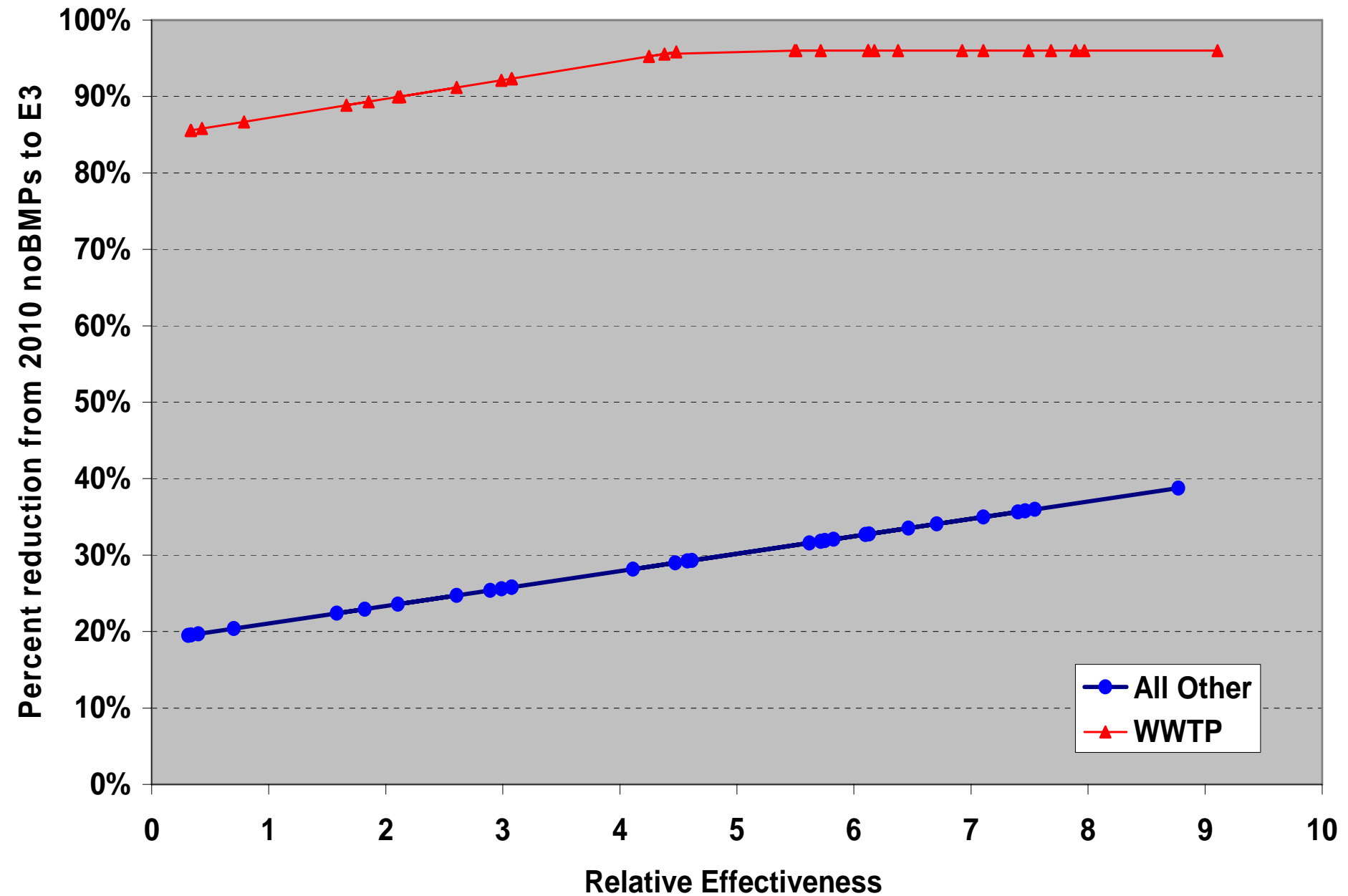
TN, p5.3, goal=200, WWTP = 4.5-8 mg/l, other: max=min+20%,



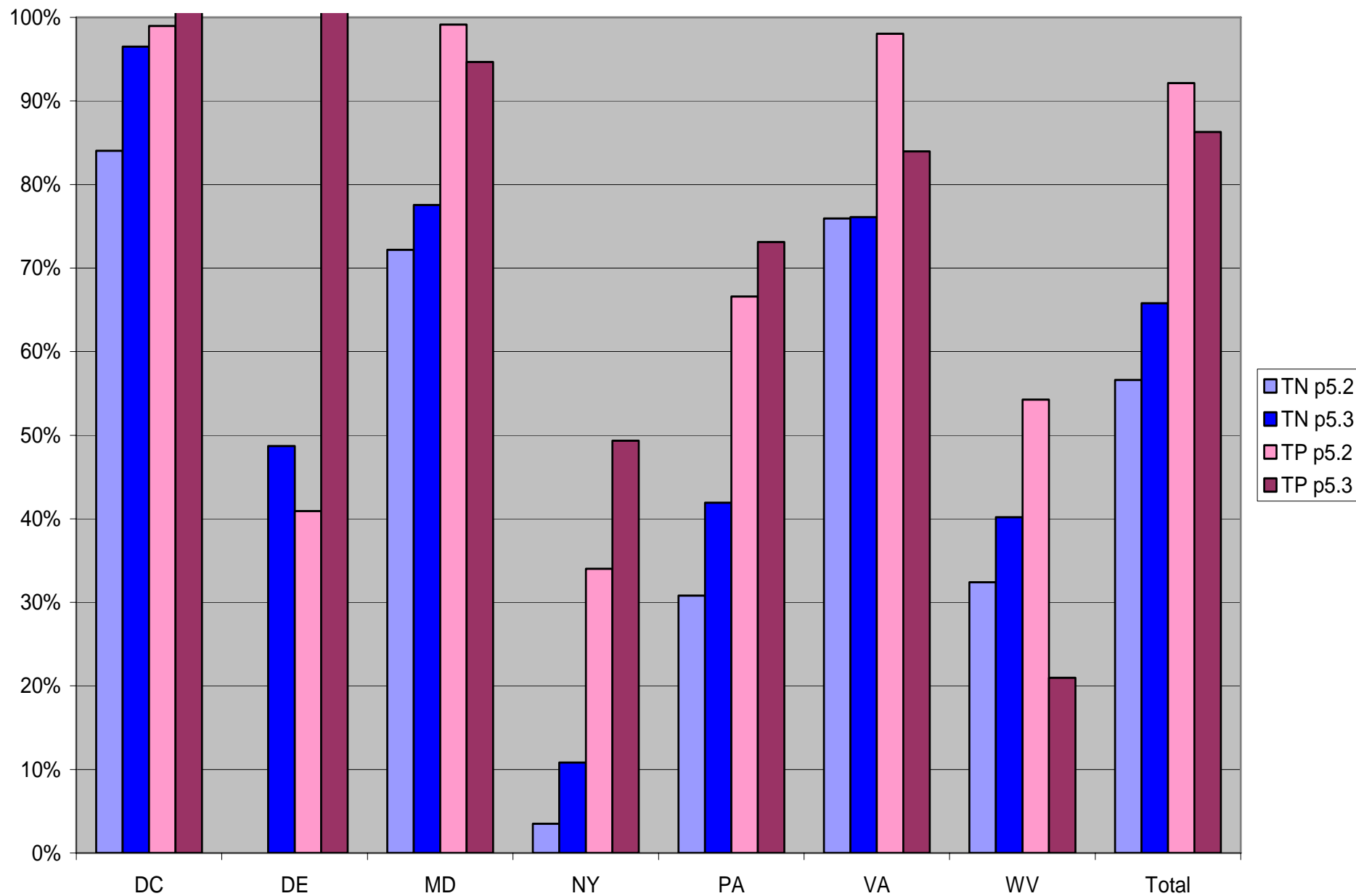
TP, p5.2, goal=15, WWTP = .22 - .54 mg/l, other: max=min+20%,



TP, p5.3, goal=15, WWTP = .22 - .54 mg/l, other: max=min+20%,



Percent of Target Reached from No Action



Targets with Phase 5.3 at 200TN / 15TP effectiveness

TN

TP

StateBasin	NoAction	2007AA	Target
DC Potm	9.78	2.57	2.31
DE Esh	4.98	4.01	3.00
MD Esh	17.63	13.71	10.10
MD Patux	6.00	3.04	2.85
MD Potm	32.84	19.50	15.95
MD Susq	1.74	1.59	1.13
MD Wsh	36.62	14.24	9.67
NY Susq	10.93	10.58	7.71
PA Esh	0.49	0.49	0.31
PA Potm	6.64	6.01	4.93
PA Susq	118.57	99.94	74.50
PA Wsh	0.04	0.03	0.02
VA Esh	2.40	2.12	1.28
VA James	49.04	31.07	26.82
VA Potm	33.45	20.68	17.64
VA Rap	9.16	7.34	5.97
VA York	8.41	6.83	5.50
WV James	0.02	0.02	0.02
WV Potm	6.32	5.75	4.91
Total	355.05	249.51	194.61

StateBasin	NoAction	2007AA	Target
DC Potm	1.58	0.07	0.13
DE Esh	0.45	0.31	0.33
MD Esh	2.00	1.29	1.33
MD Patux	0.83	0.33	0.24
MD Potm	3.56	1.06	1.02
MD Susq	0.07	0.06	0.06
MD Wsh	3.63	0.79	0.53
NY Susq	0.97	0.78	0.58
PA Esh	0.02	0.02	0.02
PA Potm	0.61	0.50	0.49
PA Susq	5.25	3.37	2.66
PA Wsh	0.00	0.00	0.00
VA Esh	0.30	0.22	0.20
VA James	7.35	3.55	2.84
VA Potm	4.92	2.01	1.69
VA Rap	1.42	1.17	0.92
VA York	1.12	0.70	0.59
WV James	0.01	0.01	0.01
WV Potm	0.91	0.86	0.65
Total	35.00	17.12	14.27