

2021-2022 Logic and Action Plan



Tree Canopy

WQGIT Meeting 4/26/21

Julie Mawhorter
Forestry Workgroup,
Tree Canopy Coordinator
USDA Forest Service
julie.mawhorter@usda.gov

The screenshot shows the homepage of the Chesapeake Tree Canopy Network. The header is dark blue with the logo on the left and navigation links on the right. The main content area has a light blue background with a large aerial photo of a city street. A white box on the right side of the photo contains text about the Baltimore Tree Trust. Below the photo is a dark blue bar with two buttons. The bottom section is white and features a map with many blue location pins, a search bar, and a sidebar with the network's logo and contact information.

Chesapeake Tree Canopy Network

SIGN UP NEWSLETTER ARCHIVE ABOUT US CONTACT US CHESAPEAKEFORESTBUFFERS.NET

WHY TREE CANOPY? UNDERSTAND YOUR CANOPY EXPAND YOUR CANOPY MAINTAIN YOUR CANOPY

Welcome to the Chesapeake Tree Canopy Network

Connecting you with resources, stories, and best practices to understand your canopy, expand your canopy, and maintain your canopy. Learn about and make the case to others why tree canopy is so critical to a healthy, vibrant Chesapeake Bay watershed. We are building this resource as we go, so please send your ideas and suggestions for making the network most helpful.

Baltimore Tree Trust: Doing More Together [Read More](#)

Get updates on tree canopy news and events! SIGN UP NEWSLETTER ARCHIVES

Tree Canopy Initiatives

Find local tree canopy assessments, goals, and urban forestry contacts.

My Style Map Address Search

chesapeake network

Looking to participate in the tree canopy conversation? Join our group on the

www.chesapeaketrees.net

CREATE VIBRANT COMMUNITIES

- 1 Incorporating trees into common spaces in public housing increases social activities.¹
- 2 Having larger trees in yards and on the street can improve home values by 3%-15%.²
- 3 Shoppers will spend 9%-12% more in areas with better tree canopy.³

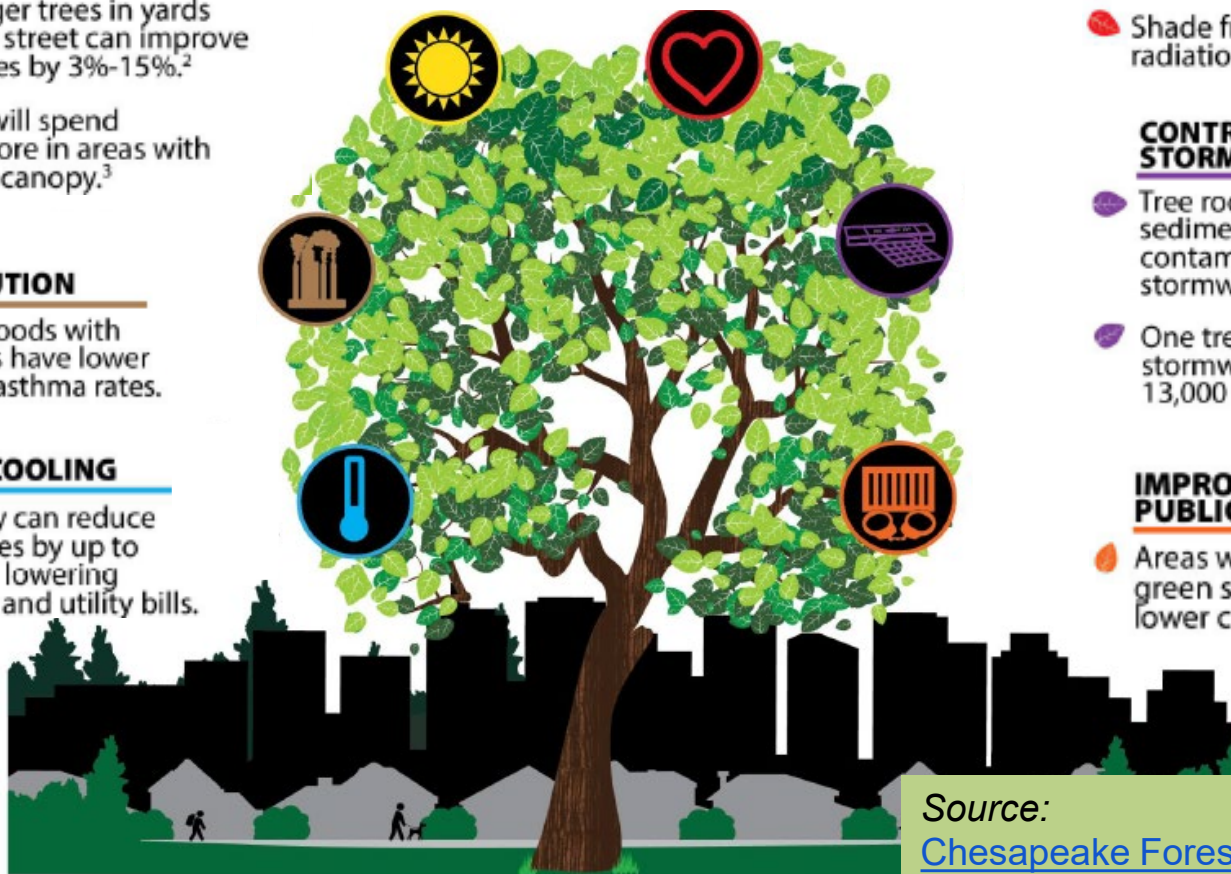
REDUCE AIR POLLUTION

- 1 Neighborhoods with lots of trees have lower childhood asthma rates.

PROVIDE SHADE & COOLING

- 1 Tree canopy can reduce temperatures by up to 20 degrees, lowering health risks and utility bills.

TREES in COMMUNITIES



IMPROVE HUMAN HEALTH

- 1 Trees help reduce stress, lower blood pressure, and boost the immune system.
- 2 Shade from trees reduces radiation that causes skin cancer.

CONTROL STORMWATER

- 1 Tree roots can trap sediment and filter contaminants from stormwater.
- 2 One tree can reduce stormwater runoff by 13,000 gallons per year.⁴

IMPROVE PUBLIC SAFETY

- 1 Areas with increased green space have lower crime rates.³

Source:

[Chesapeake Forest Restoration Strategy](#)

Through the Chesapeake Bay Watershed Agreement, the Chesapeake Bay Program has committed to...



Goal: *Vital Habitats*

Outcome: *Tree Canopy*

Continually increase urban tree canopy capacity to provide air quality, water quality and habitat benefits throughout the watershed. Expand urban tree canopy by **2,400 acres by 2025.**

Achieving a Canopy Goal: It's not just about planting . . .

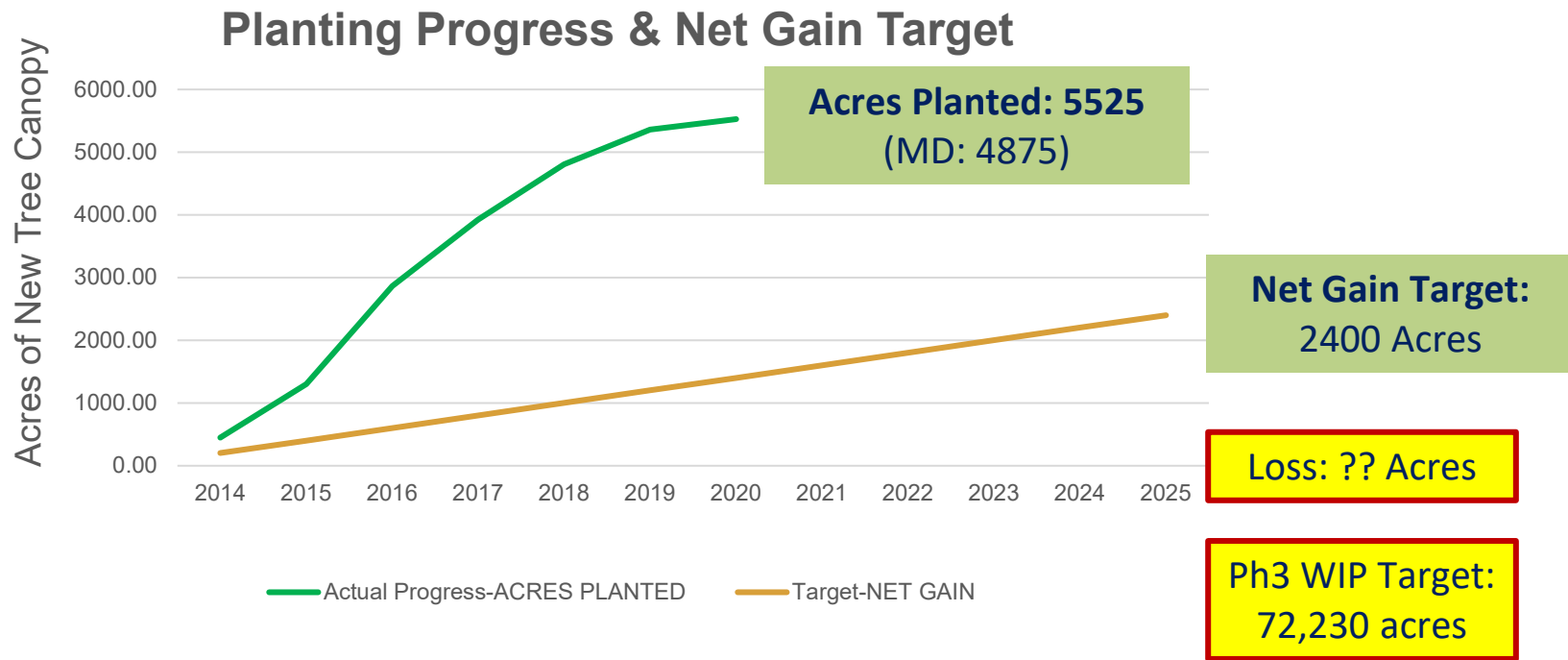


Tree Canopy Indicator has 2 components:

- 1) States report three urban tree planting BMPs annually for TMDL
- 2) Long term progress analyzed through CBP Land Cover updates (2021)

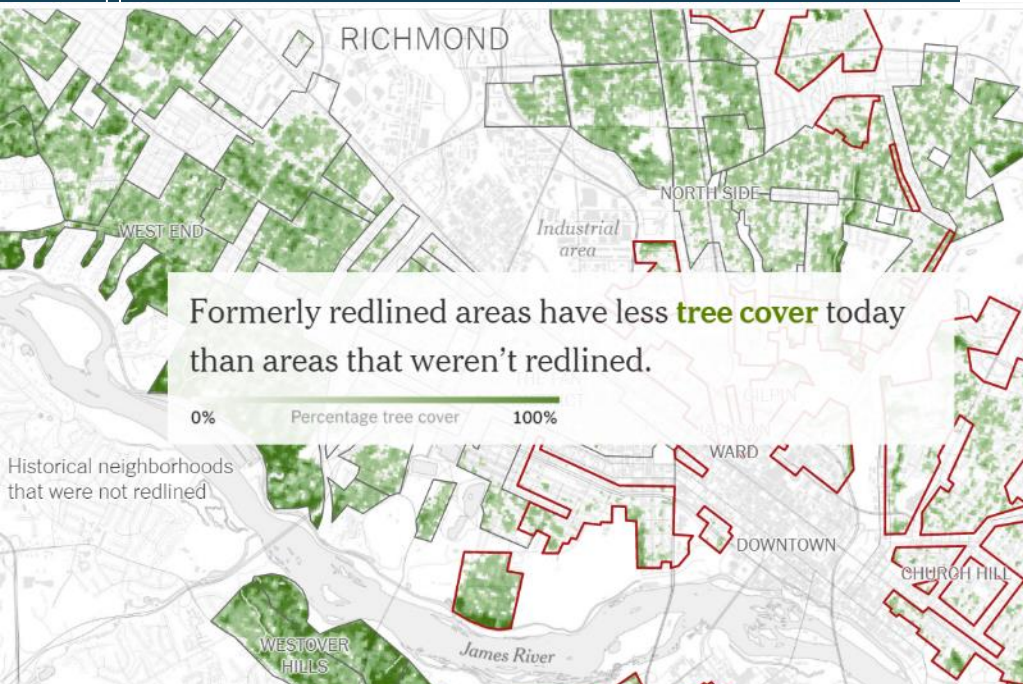


What is our Expected and Actual Progress?





Challenges & Lessons Learned



15th Annual Chesapeake Watershed Forum



Learn more: [Heat, Health & Trees Session](https://www.nytimes.com/interactive/2020/08/24/climate/racism-redlining-cities-global-warming.html), Chesapeake Watershed Forum;
<https://www.nytimes.com/interactive/2020/08/24/climate/racism-redlining-cities-global-warming.html>



Key Priorities – 2021-2022 Workplan

1. Funding & Policy Roundtable & Biennial Tree Canopy Summit (2022)

2. Assess and Communicate Tree Canopy Status & Change to Stakeholders

- Use new land cover data/change analysis to develop Bay-wide Summary Report and Local Fact Sheets

3. Continue partnership work around priority issues

- Tree Equity & DEIJ tools, resources, community support
- Climate Resilience, Stormwater
- Local Leadership, Schools

Draft guide posted <https://chesapeaketrees.net/category/schools/>

Trees and Schools: Growing the Connection A Resource Guide for Chesapeake Communities



Response to WQGIT Comments

Edits to incorporate MDE comments (in red)

- ✓ Outreach needed on public & private land
- ✓ Include more USWG coordination
- ✓ Highlight workforce/green jobs opportunities

Next Steps



Local Action Cohort SRS

- April 30-Near Final LAP Due (approved by FWG & WQGIT)
- May 3-28 - Public & Signatory Feedback
- June 10 – Present Final LAP to Management Board

Questions?