

Update on Tools to Support Segment-Shed Expectations for the Tidal Jurisdictions

Gary Shenk, Emily Trentacoste, Richard Tian, Lewis Linker

10/22/2018

This information is being provided to meet the need for timely best science.
The information is provided on the condition that neither the U.S. Geological
Survey nor the U.S. Government shall be held liable for any damages
resulting from the authorized or unauthorized use of the information.

Preliminary Information-Subject to Revision.
Not for Citation or Distribution

Existing Measure of Relative Effectiveness

Key factors:

Watershed Transport

- Watershed Characteristics
- Travel time
- Existence of impoundment:

Position along mainstem bay

- Estuarine circulation

Existence of riverine estuary

Watershed delivery:

Pound delivered per pound produced

Estuarine delivery

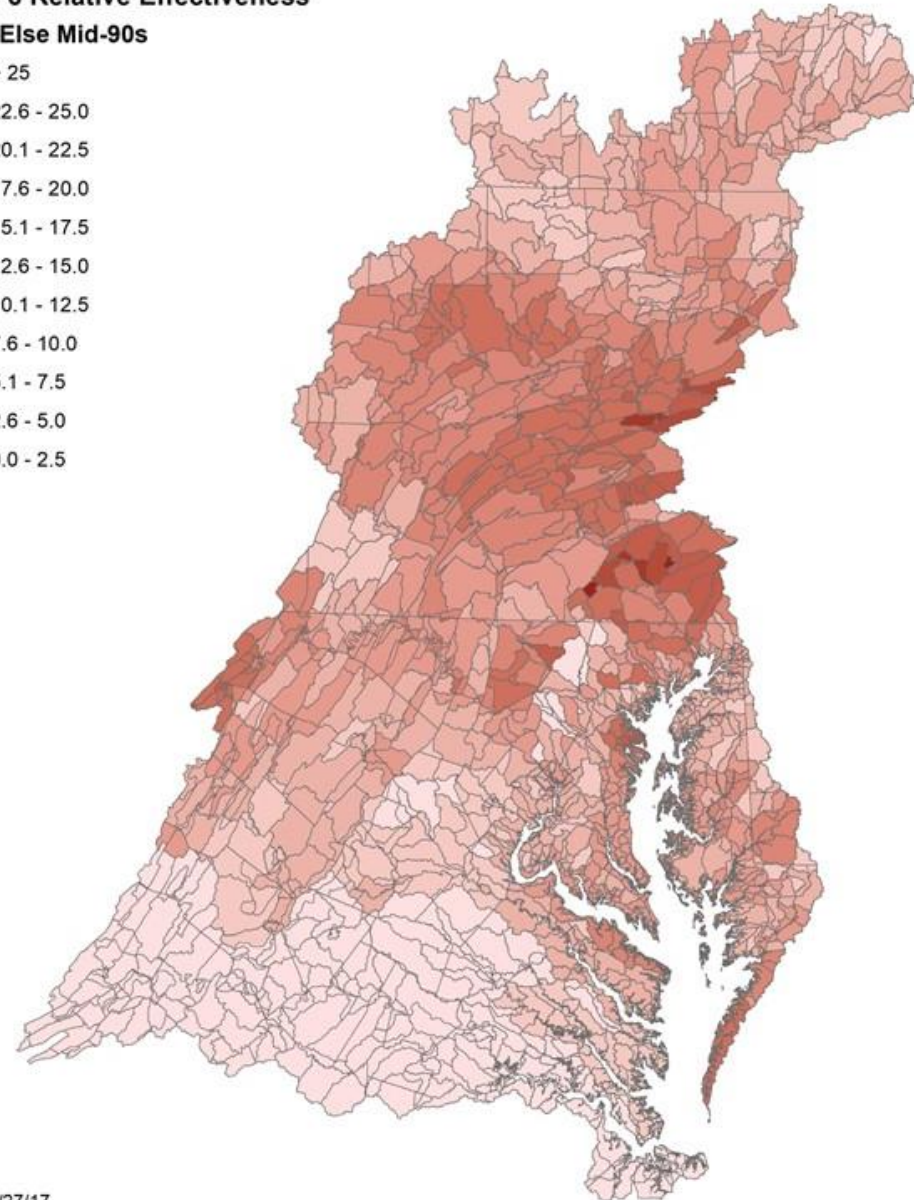
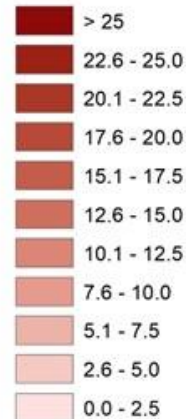
Oxygen reduced per pound delivered

Overall Effectiveness

Oxygen reduced per pound produced

Phase 6 Relative Effectiveness

TN All Else Mid-90s

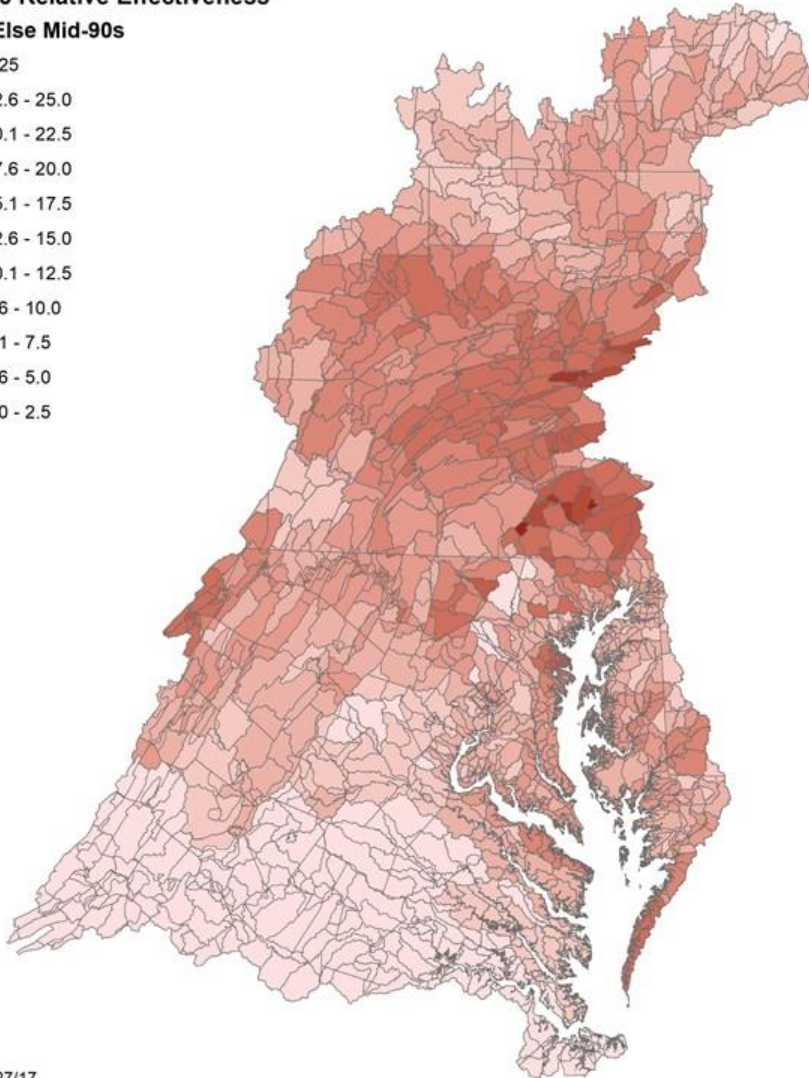
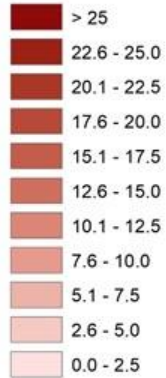


Existing Measure of Relative Effectiveness

Nitrogen

Phase 6 Relative Effectiveness

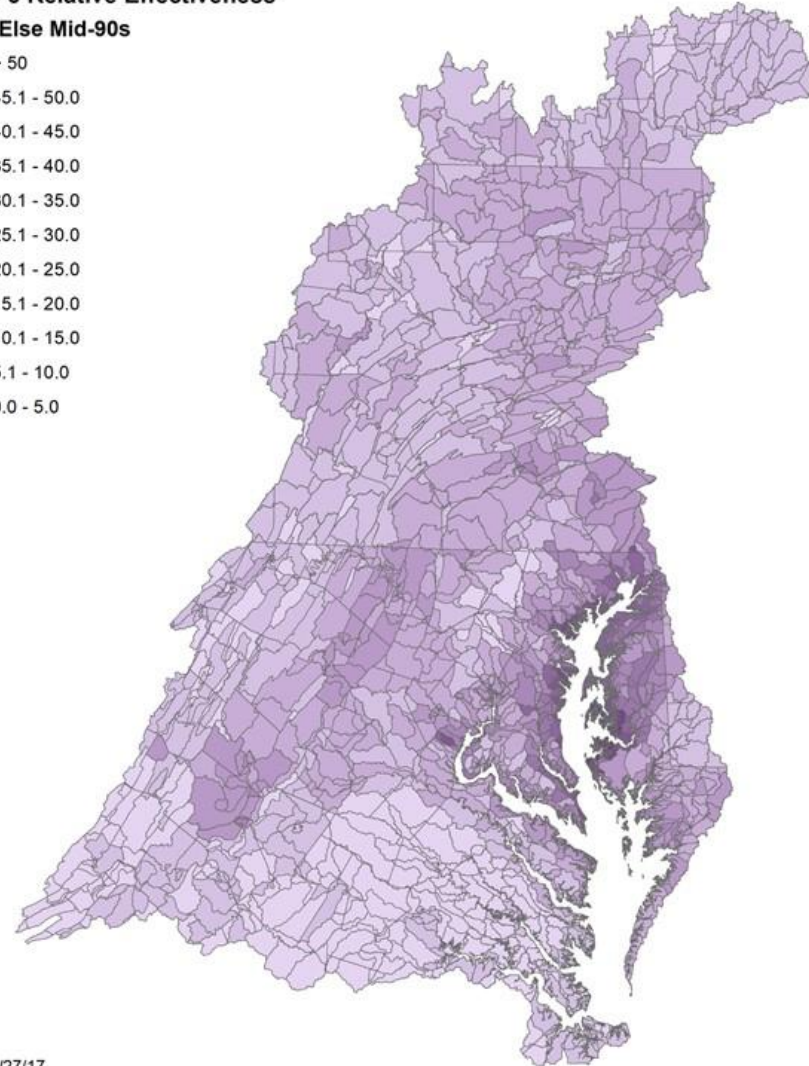
TN All Else Mid-90s



Phosphorus

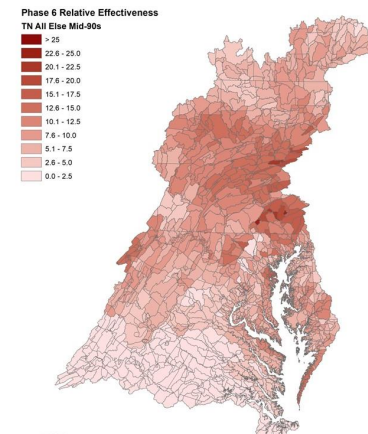
Phase 6 Relative Effectiveness

TP All Else Mid-90s



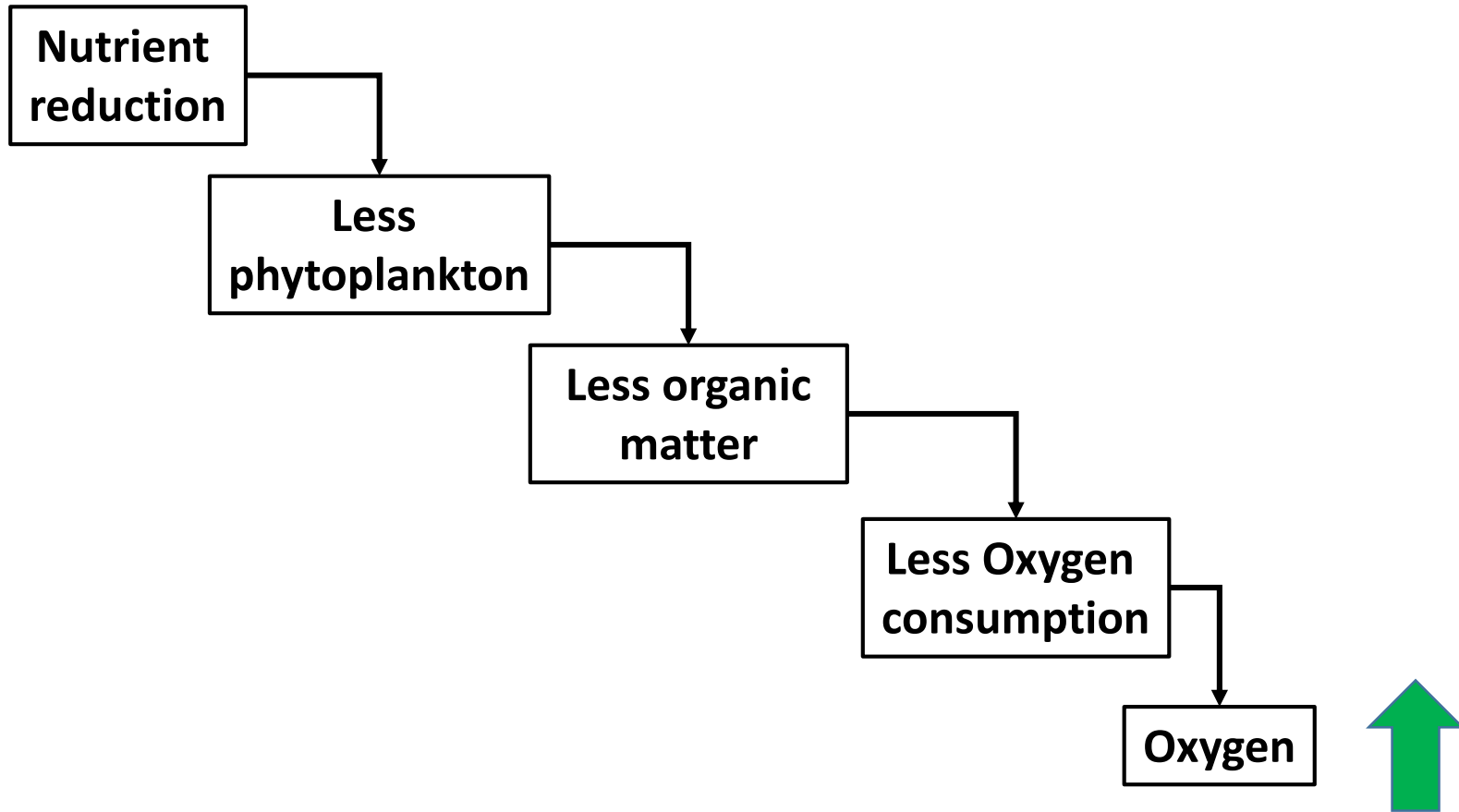
Expand to other designated uses

- Existing relative effectiveness for planning targets:
 - Deep Water and Deep Channel
 - CB3MH, CB4MH, CB5MH, POTMH
- Goal is to provide a tool for the partnership to visualize the source of load for each Tidal Segment

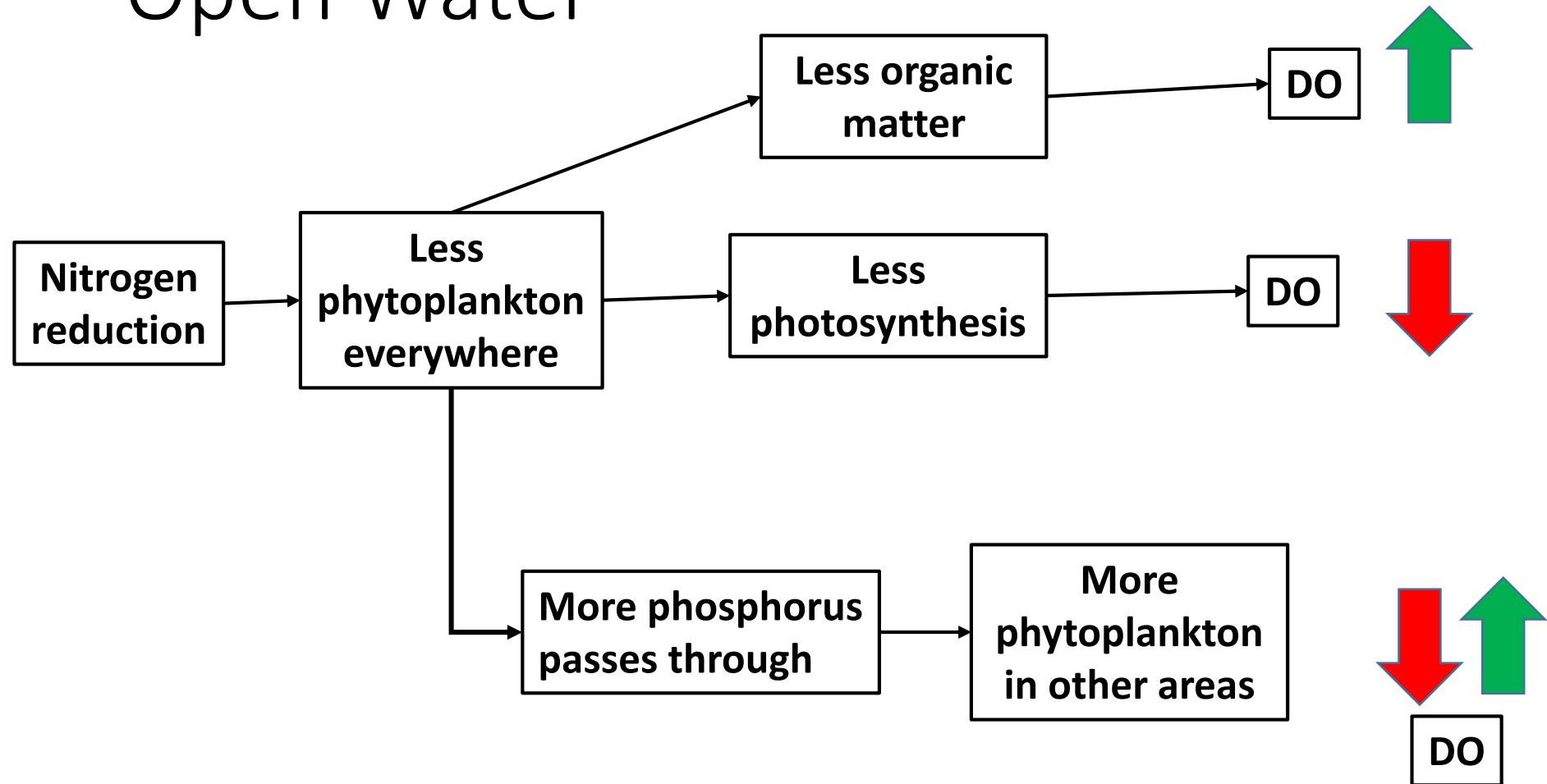


Preliminary Information-Subject to Revision.
Not for Citation or Distribution

Deep Water / Deep Channel

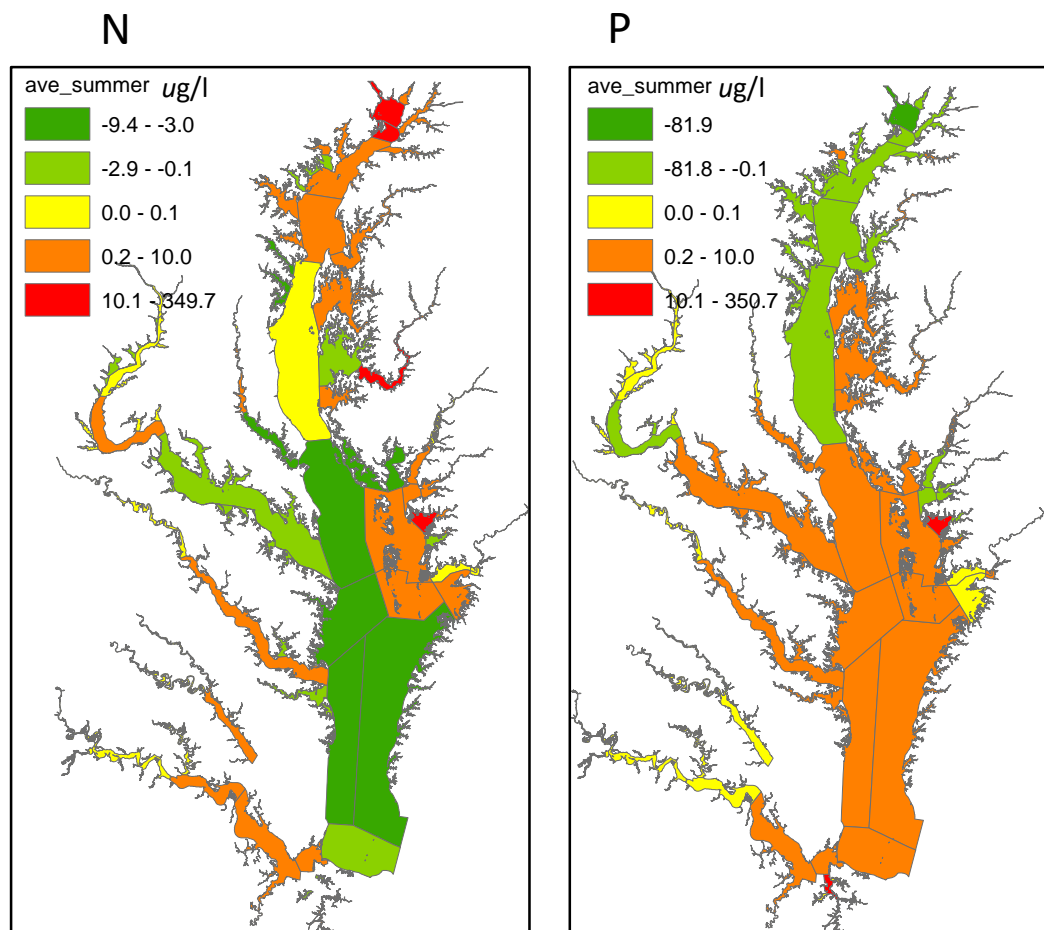


Open Water



Increase in Susquehanna Loads Effect on Oxygen

- 5 million lbs N increase / 0.5 million lbs P increase

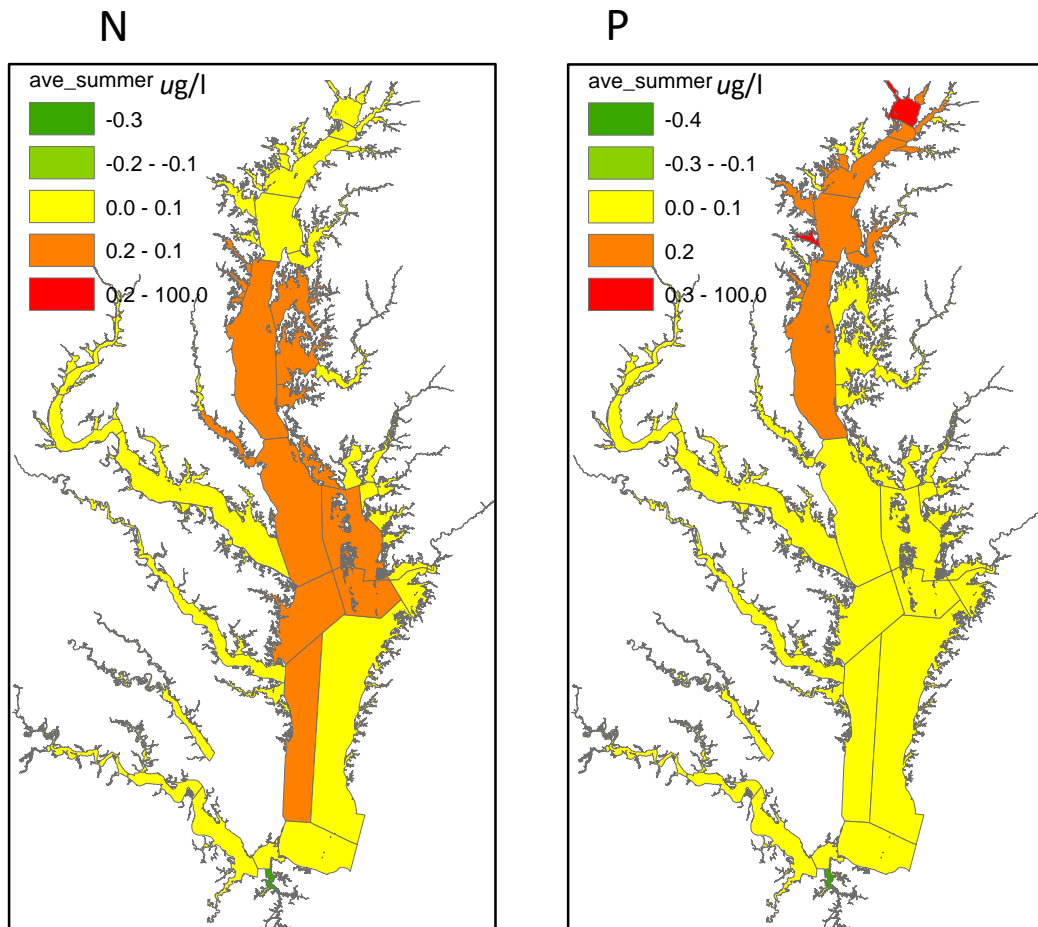


- N-limited areas hurt by N increase
- P-limited areas hurt by P increase
- Dual nutrient control necessary
- Complicated picture – hard to map or calculate

Preliminary Information-Subject to Revision.
Not for Citation or Distribution

Increase in Susquehanna Loads Effect on Chlorophyll

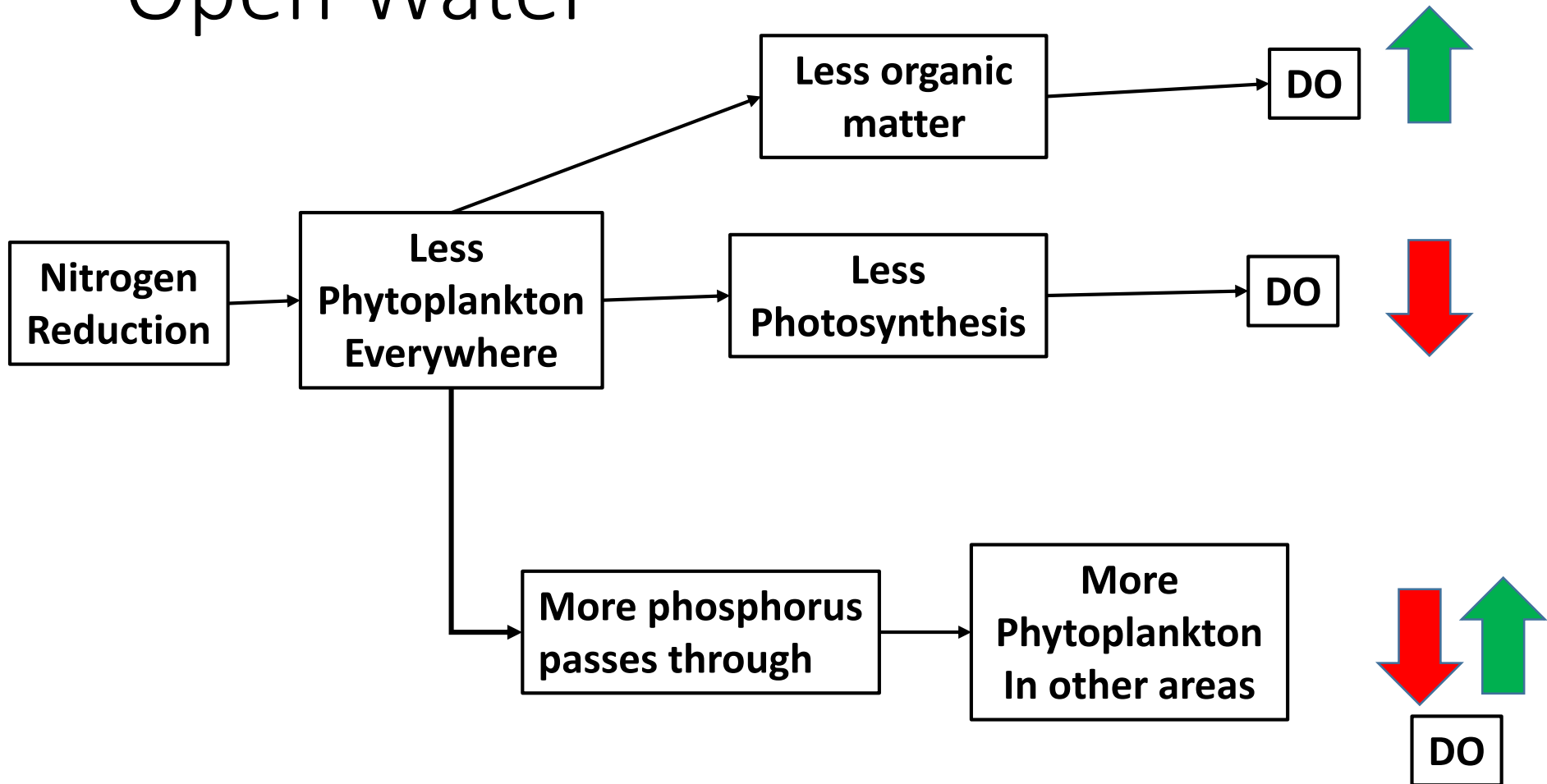
- 5 million lbs N increase / 0.5 million lbs P increase



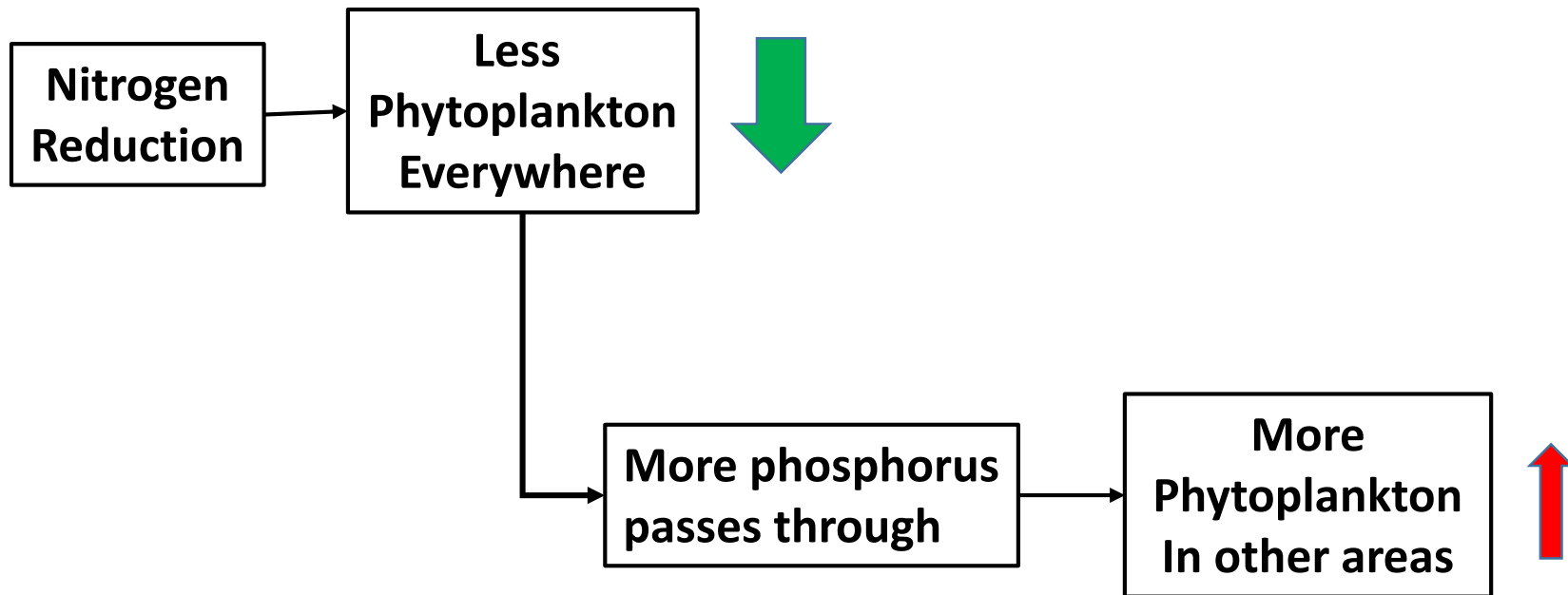
Preliminary Information-Subject to Revision.
Not for Citation or Distribution

- N-limited areas hurt more by N increase
- P-limited areas hurt more by P increase
- Dual nutrient control necessary
- Easier to explain

Open Water



Open Water

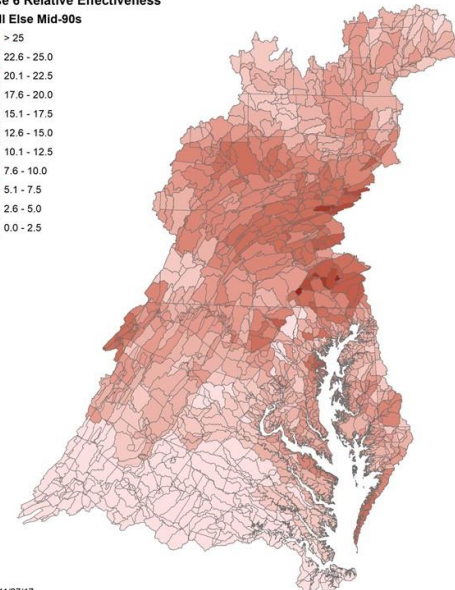
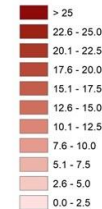


Implications

- Open Water dissolved oxygen has a complicated response to single nutrient reduction from a specific area
- Chlorophyll has a much more straightforward response
- Calculations of exchange ratios for a given designated use should not be made
 - Exchange ratios based on DW/DC are still valid
- The Final product will be interactive map of areas contributing to chlorophyll for a given designated use

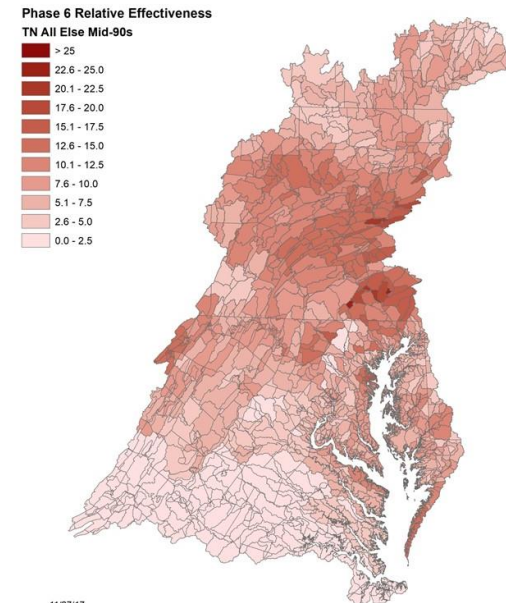
Phase 6 Relative Effectiveness

TN All Else Mid-90s



Schedule

- Nearly 400 WQSTM runs
 - 90 segments (2 have no WQSTM cells)
 - 2 constituents (N and P)
 - 2 sources (PS and NPS)
- Analysis of results
- Development of interface
- Delivery in January 2019



Preliminary Information-Subject to Revision.
Not for Citation or Distribution