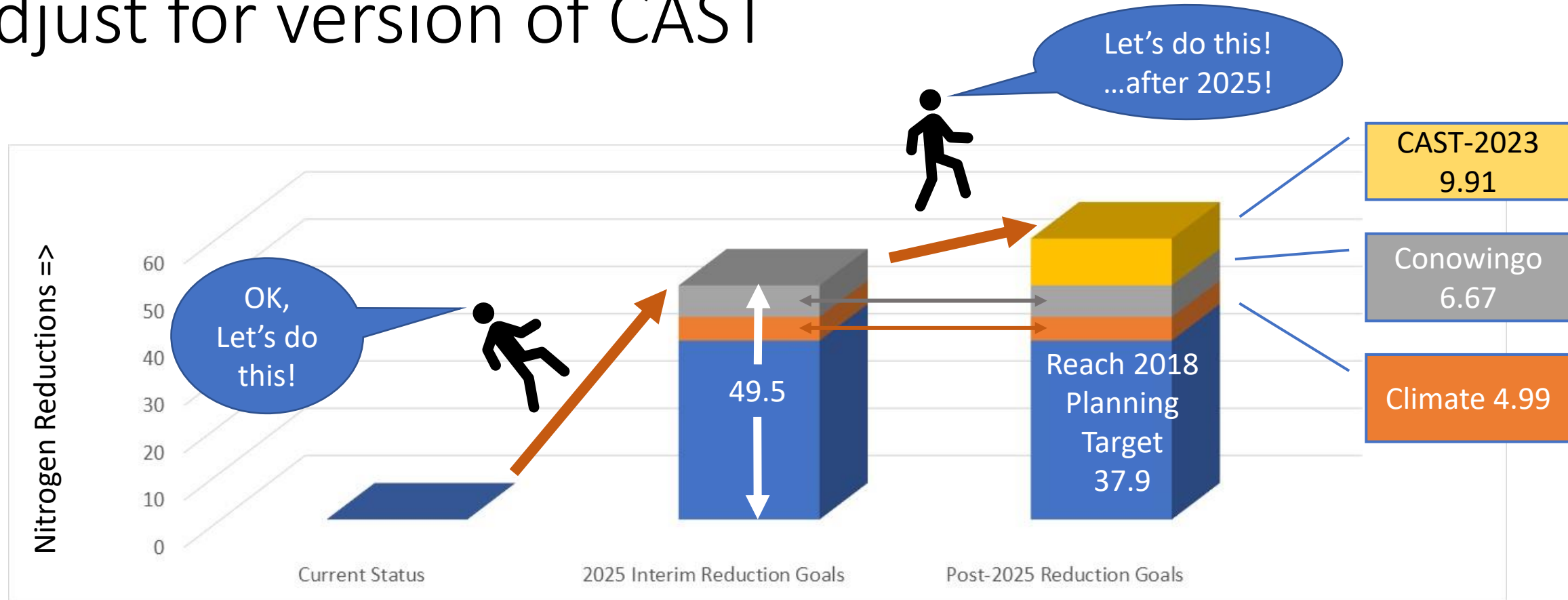
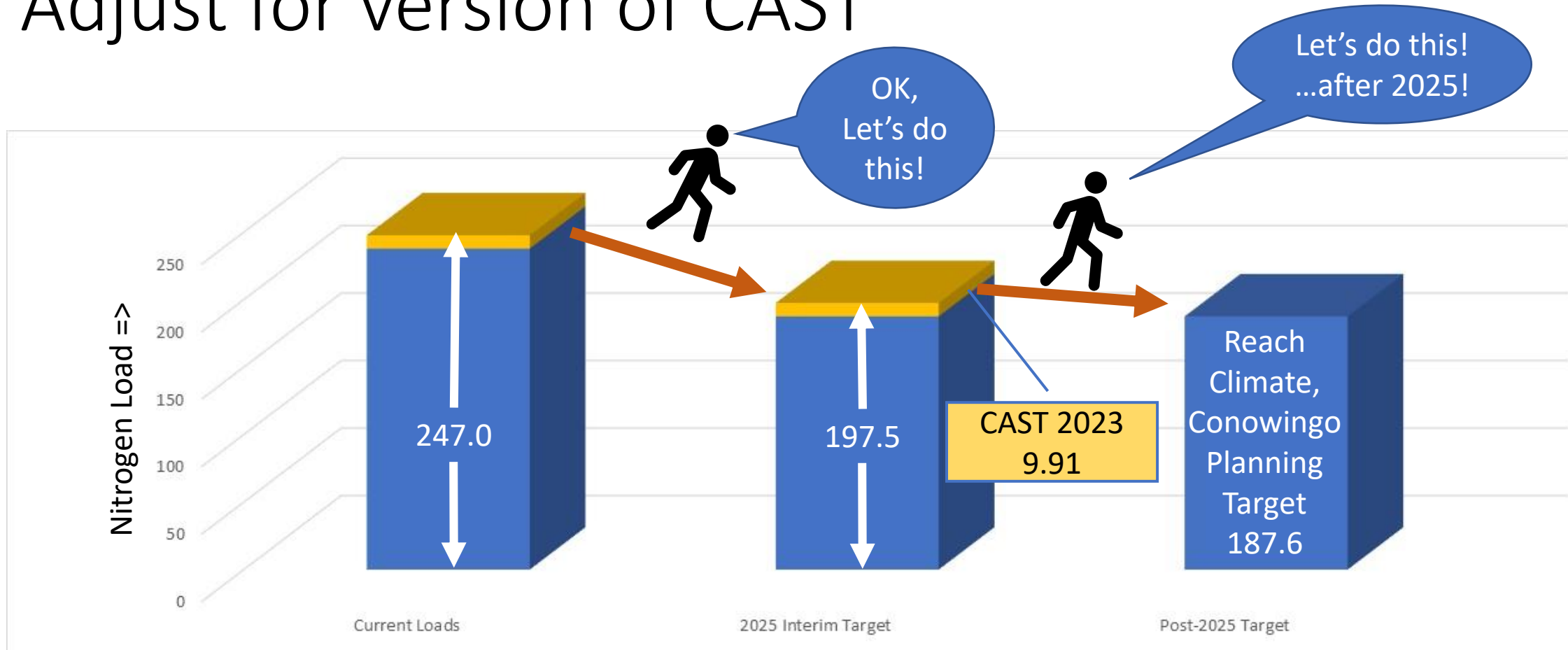


Develop interim targets
Include reductions for climate
Adjust for version of CAST



Unaccounted Additional Loads are calculated as the positive difference between the latest version of the WIPs run on CAST-2023 and CAST-2017, after within-jurisdiction exchanges are performed.

Develop interim targets
Include reductions for climate
Adjust for version of CAST



Unaccounted Additional Loads are calculated as the positive difference between the latest version of the WIPs run on CAST-2023 and CAST-2017, after within-jurisdiction exchanges are performed.

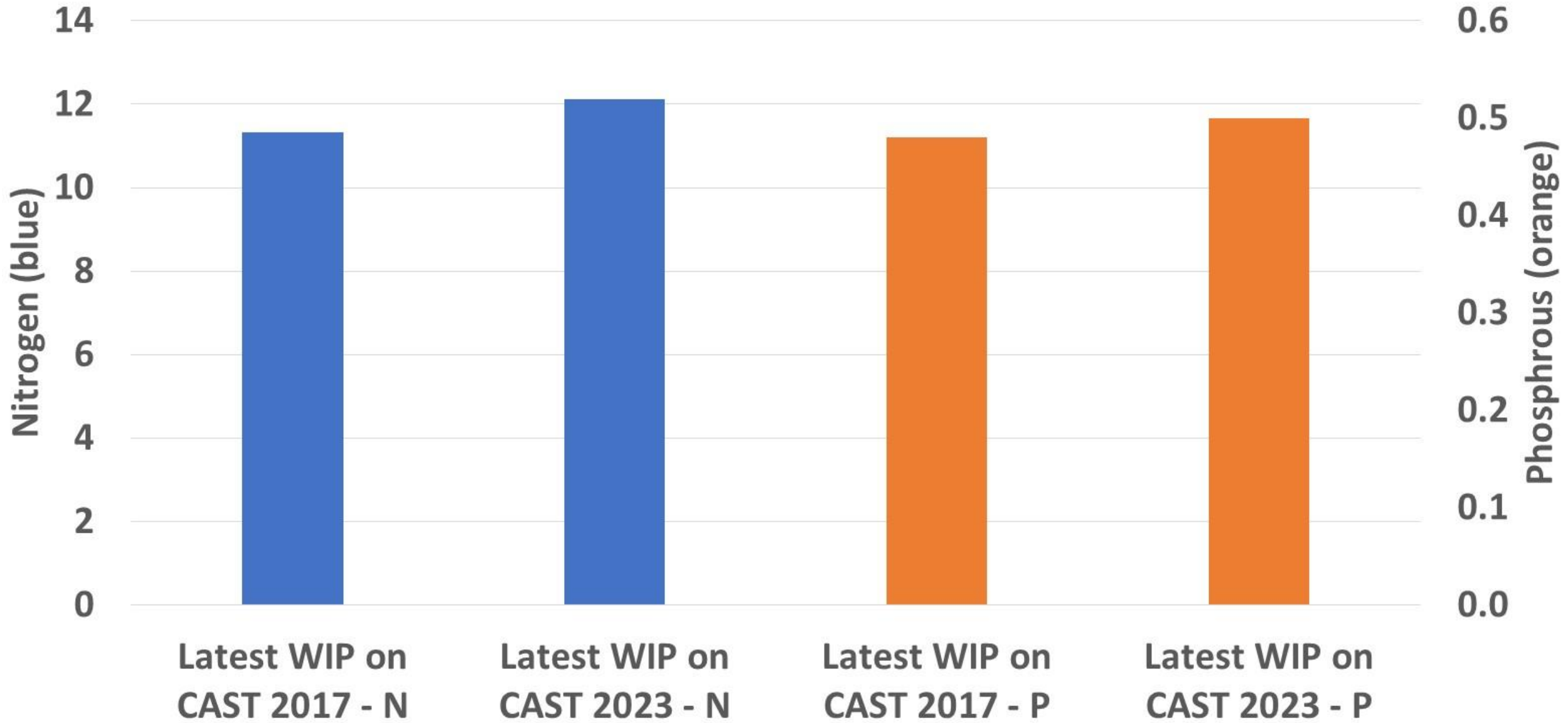
Draft Unaccounted Additional Loads

State	Nitrogen	Phosphorous
DC	0.000	0.000
DE	1.121	0.000
MD	1.813	0.000
NY	0.774	0.019
PA	5.357	0.054
VA	0.629	0.000
WV	0.217	0.004
Total	9.911	0.078

Unaccounted Additional Loads are calculated as the positive difference between the latest version of the WIPs run on CAST-2023 and CAST-2017, after within-jurisdiction exchanges are performed.

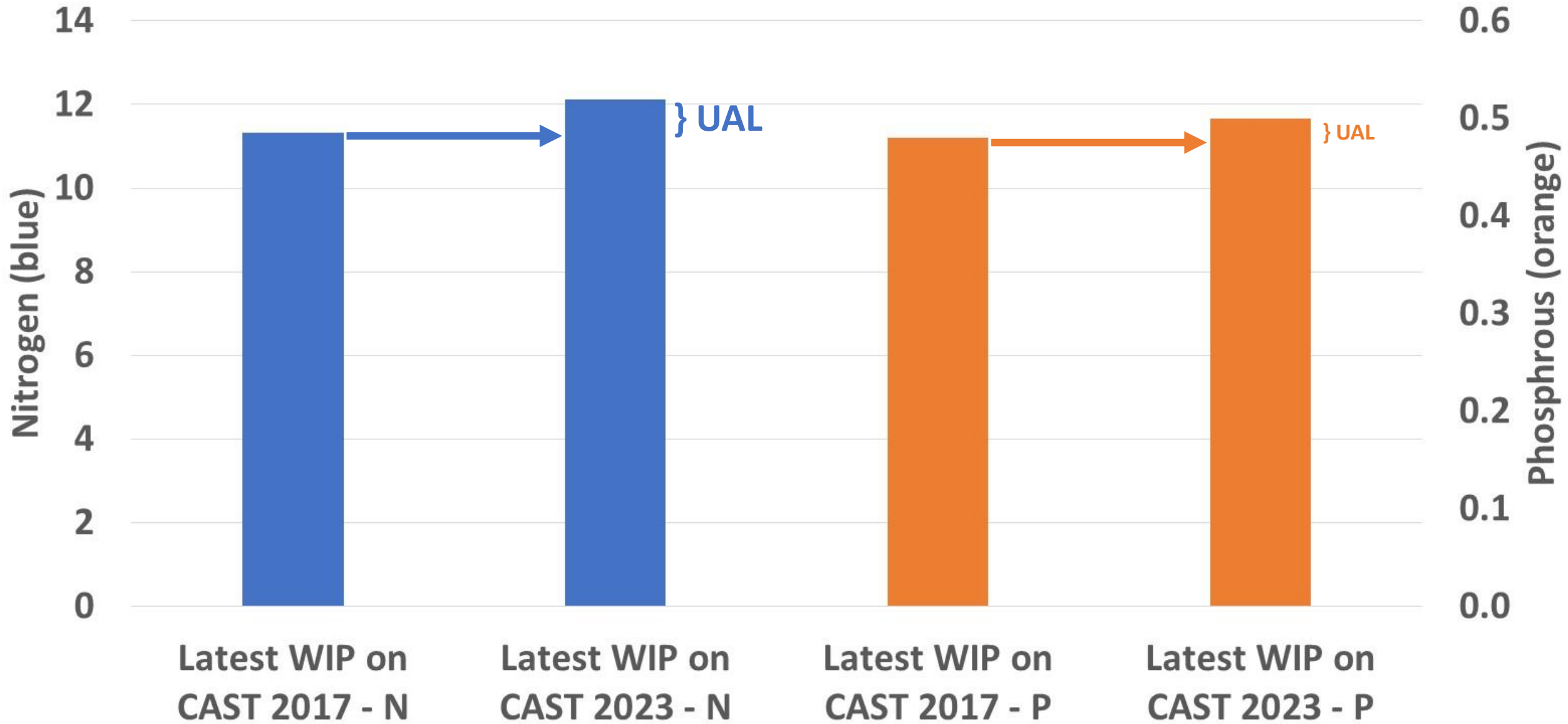
NY

Simple Example



Unaccounted Additional Loads are calculated as the positive difference between the latest version of the WIPs run on CAST-2023 and CAST-2017, after within-jurisdiction exchanges are performed.

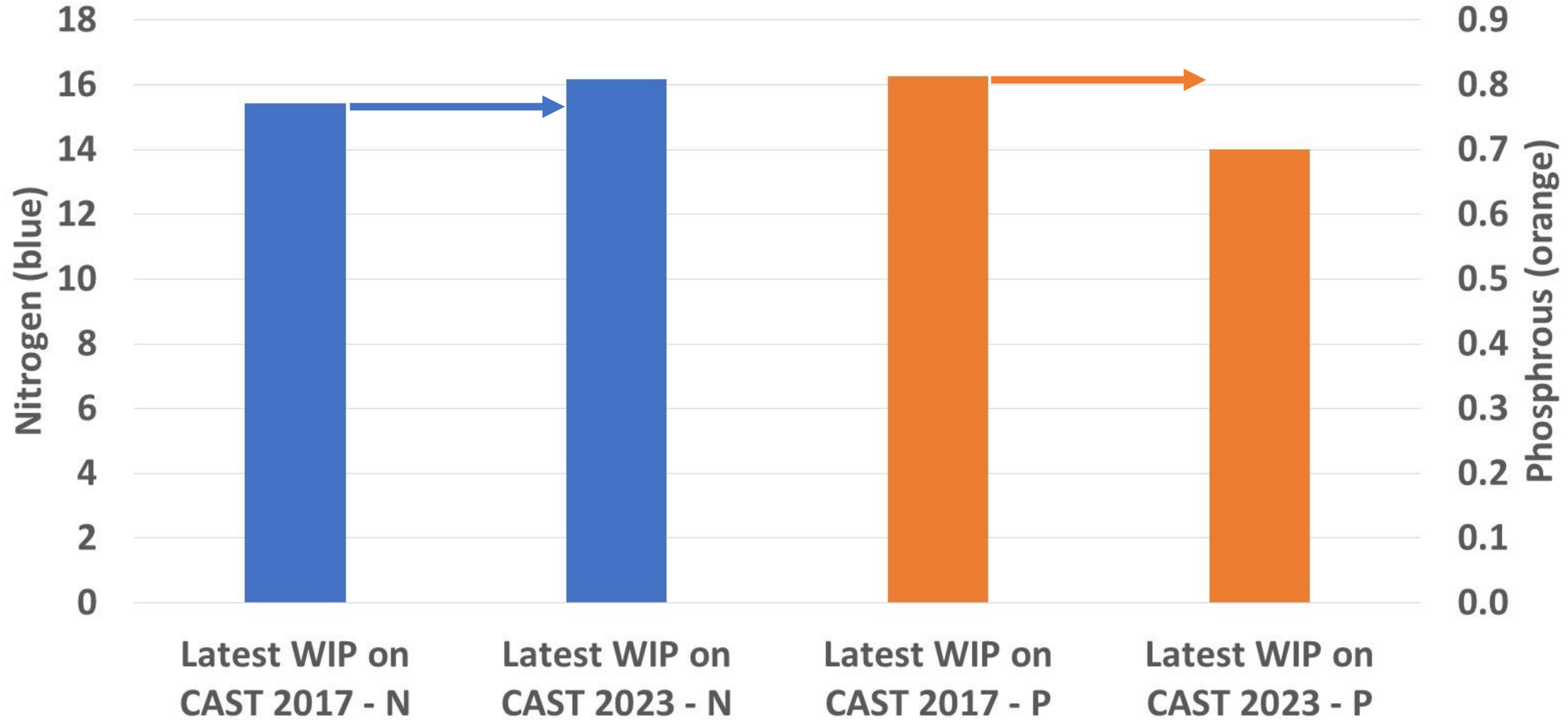
NY



Unaccounted Additional Loads are calculated as the positive difference between the latest version of the WIPs run on CAST-2023 and CAST-2017, after within-jurisdiction exchanges are performed.

MD Potomac

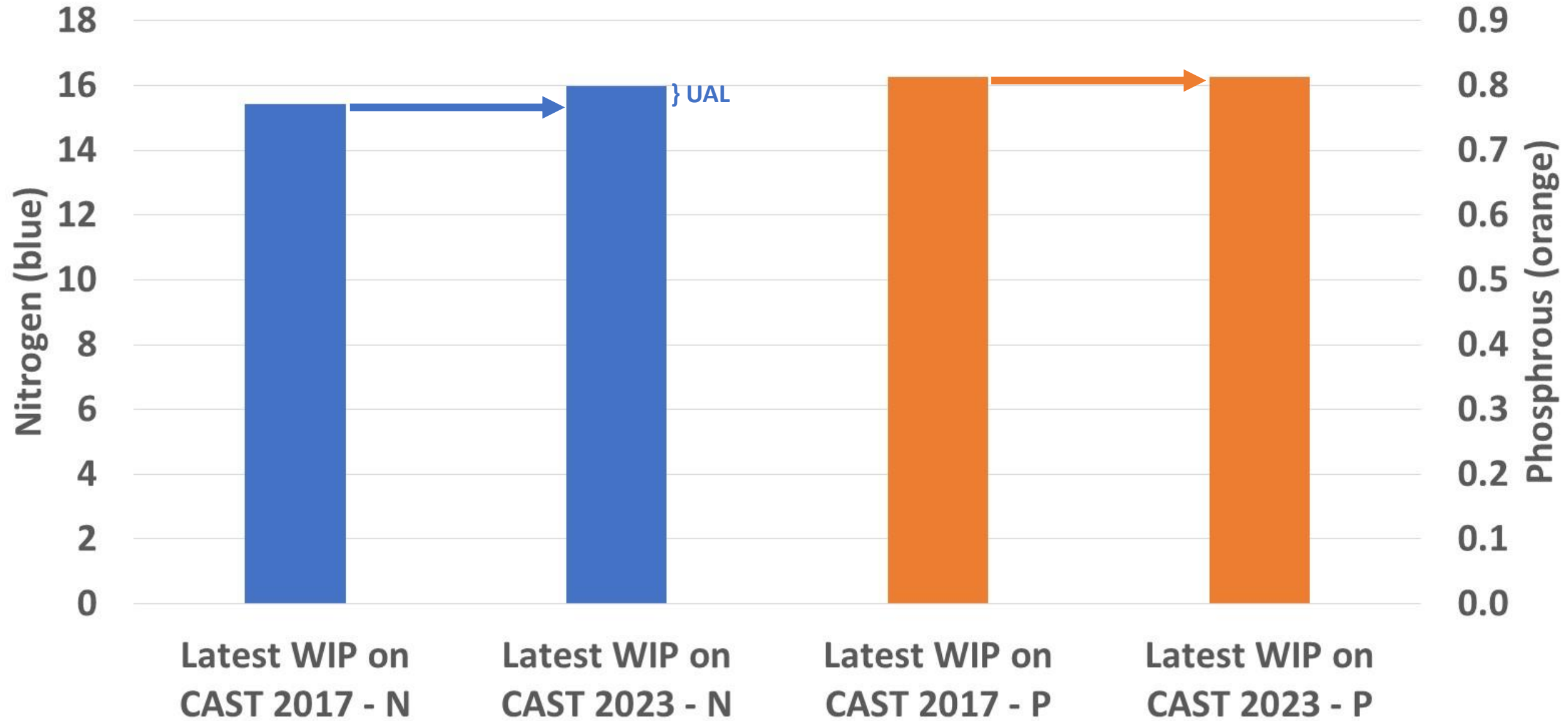
N:P Exchange



Unaccounted Additional Loads are calculated as the positive difference between the latest version of the WIPs run on CAST-2023 and CAST-2017, after within-jurisdiction exchanges are performed.

MD Potomac

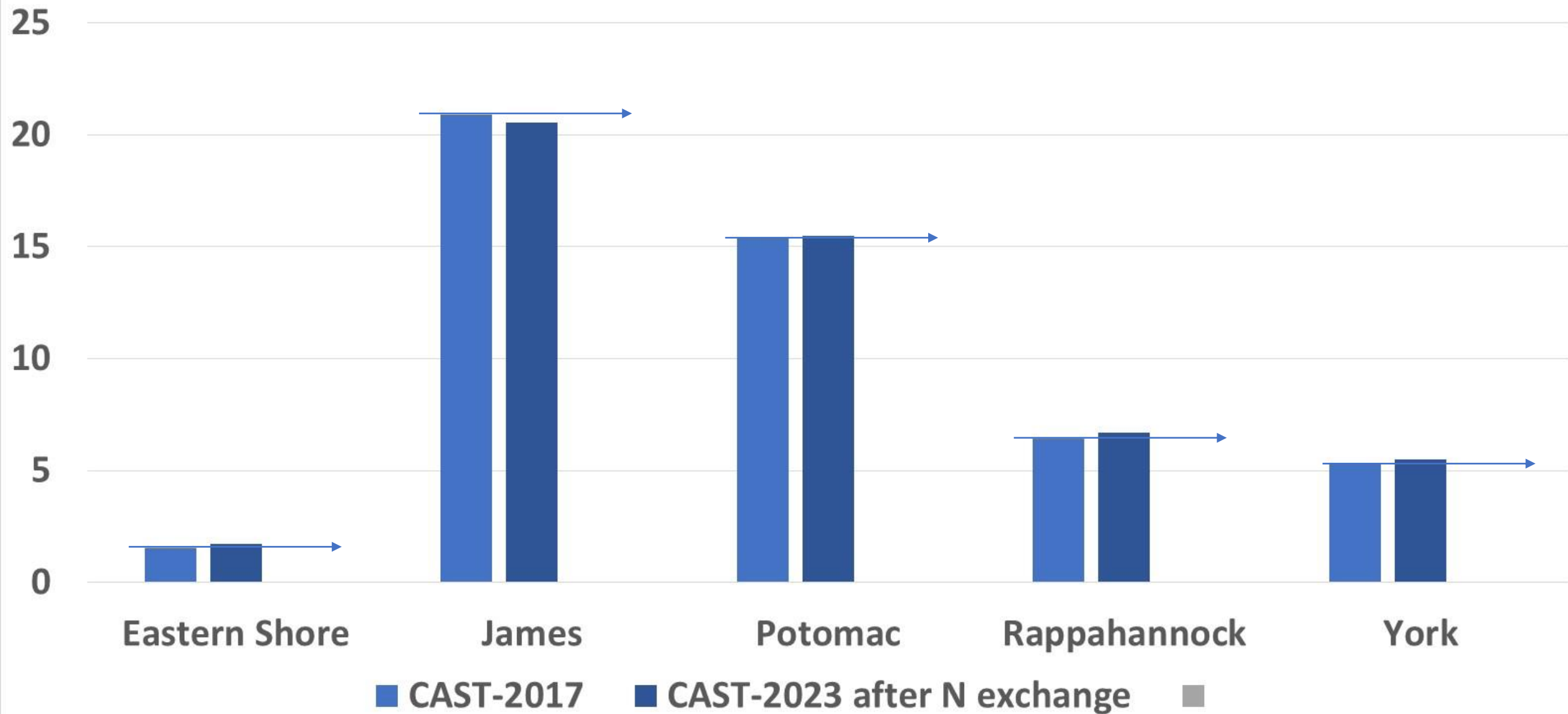
N:P Exchange



Unaccounted Additional Loads are calculated as the positive difference between the latest version of the WIPs run on CAST-2023 and CAST-2017, after within-jurisdiction exchanges are performed.

Virginia Nitrogen

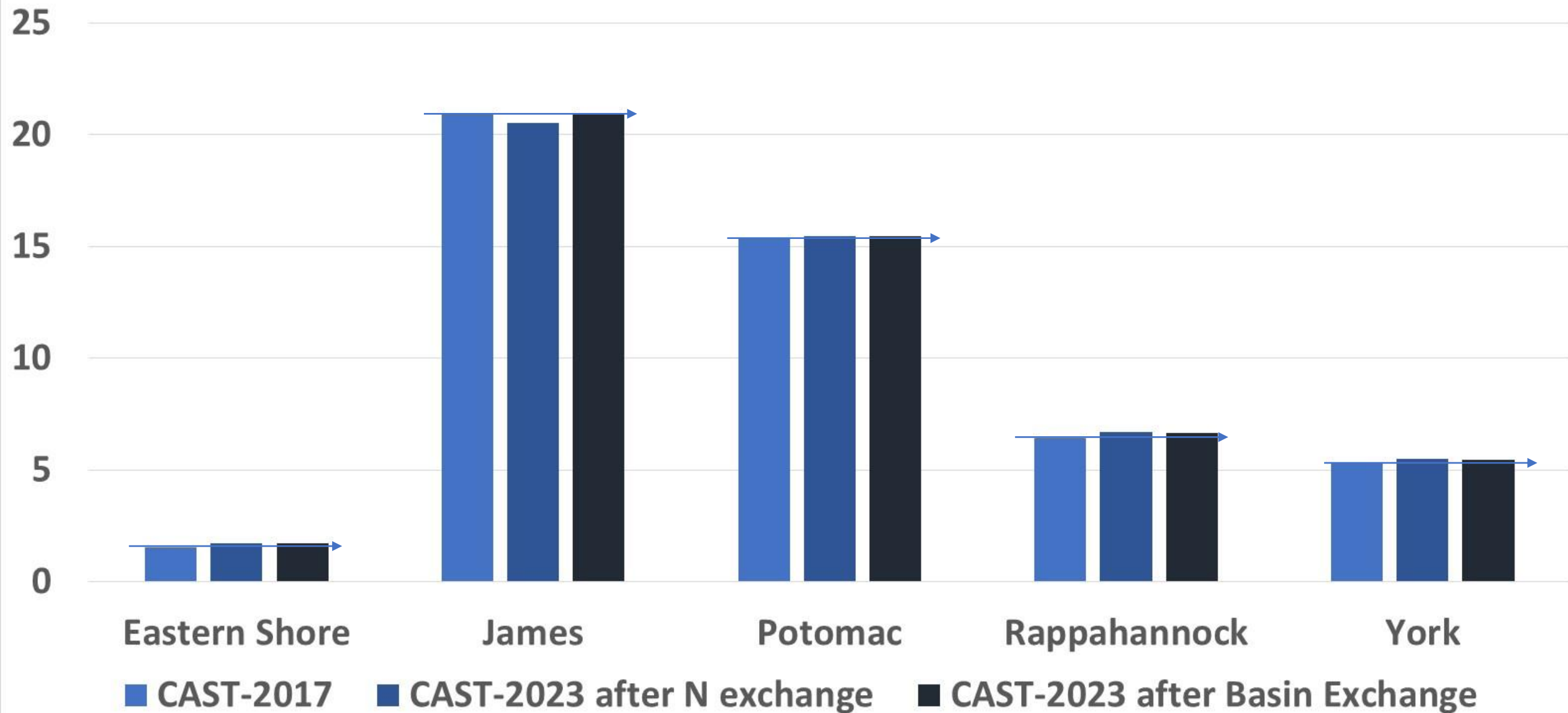
B2B Exchange



Unaccounted Additional Loads are calculated as the positive difference between the latest version of the WIPs run on CAST-2023 and CAST-2017, after within-jurisdiction exchanges are performed.

Virginia Nitrogen

B2B Exchange



Unaccounted Additional Loads are calculated as the positive difference between the latest version of the WIPs run on CAST-2023 and CAST-2017, after within-jurisdiction exchanges are performed.

Draft Loading Table - Nitrogen

StateBasin	2018 Planning Targets approved by PSC	2022 Planning Targets with Exchanges and Sediment	2020 Climate Adjustments	2022 Planning Targets with Climate reductions	2023 UALs	2023 Planning Targets with Climate and UALs	2023 Conowingo Adjustments	2023 Planning Targets with Climate, Conowingo, UALs
DC Potomac	2.42	2.42	0.01	2.42	0.00	2.42	0.00	2.42
DE Eastern Shc	4.55	4.55	0.04	4.51	1.12	5.63	0.00	5.63
MD Eastern Sh	15.21	15.60	0.37	15.23	1.14	16.38	0.00	16.38
MD Patuxent	3.21	3.21	0.11	3.09	0.02	3.11	0.00	3.11
MD Potomac	15.30	15.80	0.21	15.59	0.55	16.14	0.00	16.14
MD Susquehar	1.18	1.60	0.14	1.46	0.10	1.56	0.18	1.38
MD Western S	10.89	9.63	0.31	9.32	0.00	9.32	0.00	9.32
NY Susquehan	11.53	11.80	0.40	11.40	0.77	12.17	0.08	12.09
PA Eastern Shc	0.45	0.46	0.05	0.41	0.06	0.47	0.00	0.47
PA Potomac	6.11	6.14	0.04	6.11	0.82	6.93	0.00	6.93
PA Susquehan	66.59	66.87	1.72	65.14	4.47	69.62	6.41	63.21
PA Western Sh	0.02	0.02	0.00	0.02	0.00	0.02	0.00	0.02
VA Eastern Shc	1.43	1.83	0.01	1.82	0.16	1.98	0.00	1.98
VA James	25.92	21.81	0.30	21.51	0.00	21.51	0.00	21.51
VA Potomac	16.00	16.51	0.56	15.95	0.08	16.03	0.00	16.03
VA Rappahann	6.85	7.09	0.54	6.54	0.23	6.77	0.00	6.77
VA York	5.52	5.71	0.17	5.54	0.16	5.70	0.00	5.70
WV James	0.04	0.05	0.00	0.05	0.00	0.05	0.00	0.05
WV Potomac	8.18	8.18	0.00	8.18	0.22	8.39	0.00	8.39
AllStateBasins	201.41	199.28	4.99	194.29	9.91	204.20	6.67	197.53

Draft Loading Table - Phosphorus

StateBasin	2018 Planning Targets approved by PSC	2022 Planning Targets with Exchanges and Sediment	2020 Climate Adjustments	2022 Planning Targets with Climate reductions	2023 UALs	2023 Planning Targets with Climate and UALs	2023 Conowingo Adjustments	2023 Planning Targets with Climate, Conowingo, UALs
DC Potomac	0.130	0.130	0.001	0.129	0.000	0.129	0.000	0.129
DE Eastern Shc	0.108	0.108	0.003	0.105	0.000	0.106	0.000	0.106
MD Eastern Sh	1.286	1.290	0.032	1.258	0.000	1.258	0.000	1.258
MD Patuxent	0.301	0.300	0.019	0.281	0.000	0.281	0.000	0.281
MD Potomac	1.092	1.090	0.033	1.057	0.000	1.057	0.000	1.057
MD Susquehar	0.053	0.050	0.007	0.043	0.000	0.043	0.003	0.040
MD Western Sl	0.948	0.950	0.020	0.929	0.000	0.929	0.000	0.929
NY Susquehan	0.587	0.476	0.044	0.432	0.019	0.451	-0.013	0.464
PA Eastern Shc	0.025	0.022	0.005	0.017	0.001	0.018	0.000	0.018
PA Potomac	0.357	0.338	0.008	0.330	0.027	0.357	0.000	0.357
PA Susquehan	2.661	2.544	0.082	2.462	0.026	2.488	0.153	2.335
PA Western Sh	0.001	0.001	0.000	0.001	0.000	0.001	0.000	0.001
VA Eastern Shc	0.164	0.152	0.000	0.152	0.000	0.152	0.000	0.152
VA James	2.731	2.241	0.143	2.097	0.000	2.097	0.000	2.097
VA Potomac	1.892	1.823	0.073	1.750	0.000	1.750	0.000	1.750
VA Rappahann	0.849	0.819	0.102	0.717	0.000	0.717	0.000	0.717
VA York	0.556	0.548	0.018	0.530	0.000	0.530	0.000	0.530
WV James	0.005	0.006	0.000	0.006	0.000	0.006	0.000	0.006
WV Potomac	0.427	0.427	0.008	0.418	0.004	0.423	0.000	0.423
AllStateBasins	14.17	13.31	0.60	12.71	0.08	12.79	0.14	12.65