

Submerged Aquatic Vegetation Habitat Requirements: A Third Technical Synthesis

Lee Karrh
MD-DNR

Overview

- There have been two previous Technical Syntheses, 1992 and 2000 which defined water quality habitat requirements (HRs) for SAV, mostly clarity related parameters and nutrients.
- These HRs have stood the test of time, but there was room for improvement

- The original HRs were developed by assessing what necessary for *persistence* of a SAV bed
- On-the-ground restoration demonstrated that different water quality conditions are needed to go from unvegetated bottom to having a sustainable grass bed

- In addition to revising HRs, other factors needed further consideration for management of SAV
 - Climate Change
 - Impact of extreme events
 - Feed-back loops of SAV on water quality
 - Changes in species diversity and community structure over time
 - Resilience of SAV beds – the role of genetic diversity, connectivity and seed banks
 - Land use and shoreline management
 - Ecosystem services provided by SAV

21 Participants

Ken Moore EDITOR	Virginia Institute of Marine Science
Tom Arnold	Dickinson College
Katia Engelhart	University of Maryland Center for Environmental Science, AL
Chuck Gallegos	Smithsonian Environmental Research Center
Becky Golden	Maryland Department of Natural Resources
Cassie Gurbisz	University of Maryland Center for Environmental Science, HPL
Brooke Landry	Maryland Department of Natural Resources
Mike Kemp	University of Maryland Center for Environmental Science, HPL
Chris Kennedy	George Mason University
Maile Neel	University of Maryland College Park
Bob Orth	Virginia Institute of Marine Science
Cindy Palinkas (in for Eva Koch)	University of Maryland Center for Environmental Science, HPL
Chris Patrick	Smithsonian Environmental Research Center
Nancy Rybicki	US Geological Survey, Reston, VA
Erin Shields	Virginia Institute of Marine Science
J. Court Stevenson	University of Maryland Center for Environmental Science, HPL
Chris Tanner	St. Mary's College
Lisa Wainger	University of Maryland Center for Environmental Science, CBL
Don Weller	Smithsonian Environmental Research Center
Richard Zimmerman	Old Dominion University
Lee Karrh	Maryland Department of Natural Resources

Response and resilience of submersed aquatic vegetation to extreme weather events (Gurbisz, Kemp, Golden, Tanner)

- Light limitation
 - Rain storms produce inputs of sediments, directly blocking light
 - These turbidity pulses can linger (on the scale of years) due to resuspension of unconsolidated material
 - Large pulses of N and P fuel algal blooms
 - These impacts can be mitigated by:
 - Species and genetic diversity
 - Feedback loops within large grass beds.

- Physical disturbance (waves and currents)
 - Plants can be dislodged or uprooted by wind-waves and high velocity flows.
 - These are mitigated by SAV bed canopy drag attenuating both vertical (waves) and horizontal movement (flow)
 - Canopy drag can also divert flows away from shoals and into the channels
- Response to heat waves (next chapter)

- Factors influencing SAV bed resilience
 - Size of the SAV bed
 - Magnitude of the event
 - Timing of event (T.S. Agnes vs T. S. Lee)
 - Condition of bed (i.e. is bed already light-stressed or fairly robust)
 - Diversity
- Future Work
 - Examine synergistic effects of chronic stressors with pulsed events
 - Analysis of WQ data associated with extreme events relative to HRs

21ST CENTURY CLIMATE CHANGE AND SUBMERGED AQUATIC VEGETATION IN THE CHESAPEAKE BAY

Arnold, Engelhart, Stevenson, Zimmerman

- The Chesapeake will likely transition from a temperate to a subtropical estuary during the 21st century, as a result of changing climate conditions
- Three components of climate change will impact Chesapeake Bay SAV directly: increasing temperatures, sea level rise, and coastal zone acidification
- Our understanding of how these stressors effect SAV directly is increasing and, coupled with regional climate forecasts, permits us to make basic predictions for the future of bay grasses.

- Climate warming has already been implicated in die-offs of submerged vegetation, especially eelgrass (*Z. marina*). Continued warming has been predicted to reduce and possibly eliminate eelgrass from the Chesapeake Bay
- The “CO₂ fertilization effect” of coastal acidification has the potential to stimulate photosynthesis and growth in submerged vegetation, when they are carbon limited. High CO₂ / low pH conditions predicted to occur during this century are likely to offset the deleterious effects of thermal stress, facilitating the survival of eelgrass in the Chesapeake Bay
- Our predictions are limited, however, by our poor understanding of the indirect effects of climate change on community members, including fouling organisms, grazers, and microbes associated with seagrass die-offs. These indirect effects are likely to trigger abrupt, unforeseen changes in these communities

Shifting patterns in SAV species diversity and community structure

Rybicki, Engelhart Tanner, Orth

- Case study- Susquehanna Flats
 - High species diversity in 1971 (8spp.)
 - Low diversity in surveys 1974 to 1984 (1sp)
 - High gain in later years (5 to 10 spp.)
 - Diversity is negatively correlated with *in situ* CHLA, TSS and DIP and negatively correlated with Susquehanna River TN and TP inputs
 - Proportion of exotics in community positively correlated with TN inputs from WTP
 - Natives negatively correlated with WTP and River Input TN

- Case study- Chickahominy River
 - 3 species present, *Hydrilla verticillata*, *Najas minor*, *Ceratophyllum demersum*
 - Generally, exotics and the native spp. abundance are positively correlated
 - *N. minor* grows earlier in the season than *H. verticillata*, giving it a competitive advantage
 - However, during a drought in 2001, 2002 *N. minor* populations declined dramatically due to increased salinity, allowing *H. verticillata* to colonize more area

- Case study – York River
 - Only two species *Zostera marina* and *Ruppia maritima*
 - Eelgrass dominates community nominally
 - Widgeon grass dominates after a perturbation
 - However, once favorable conditions return, eelgrass out competes the widgeon grass
- Detailed analysis of species composition is pending for 21 or more segment

Resilience of SAV beds – the role of genetic diversity, connectivity and seed banks

(Engelhart, Neel, Orth)

- Declines in SAV can mean;
 - remaining SAV populations may not support the genetic diversity necessary to resist or adapt to environmental change
 - reduced connectivity among remaining SAV patches may preclude dispersal and gene flow among populations
 - diminished SAV seed banks may not allow rapid recovery of a population after a disturbance.

SAV genetics is still a new field

There are relatively few papers

Species	native	Chesapeake Bay	Total worldwide
<i>Ceratophyllum demersum</i>	Yes	0	1
<i>Elodea canadensis</i>	Yes	0	1
<i>Hydrilla verticillata</i>	No	0	1
<i>Potamogeton crispus</i>	Yes	0	0
<i>Potamogeton nodosus</i>	Yes	0	0
<i>Potamogeton perfoliatus</i>	Yes	0	0
<i>Potamogeton pusillus</i>	Yes	0	1
<i>Ruppia maritima</i>	Yes	0	0
<i>Stuckenia pectinata</i>	Yes	0	4
<i>Vallisneria americana</i>	Yes	2	4
<i>Zannichellia palustris</i>	Yes	0	1
<i>Zostera marina</i>	Yes	5	47
TOTAL for Chesapeake Bay species		7	60

- Eelgrass in Chesapeake Bay has medium genetic diversity compared to other systems world-wide
- Restored eelgrass beds have similar genetic diversity to donor beds
- Small, older eelgrass beds tend to be more diverse than newer younger beds (indication of more inbreeding)

- Wild celery is more genetically diverse in Chesapeake Bay than other systems
- CB research has shown that only certain genotypes of wild celery can grow in specific locations
- Reproduction is compromised in low diversity sites due to low probability of having both male and female plants and even for flowering to occur
- Genotypes differed in mean values (i.e., niche optima) for phenotypic traits that affect persistence: vegetative expansion: sunlight capture, as well as timing and frequency of production of flowers and turions

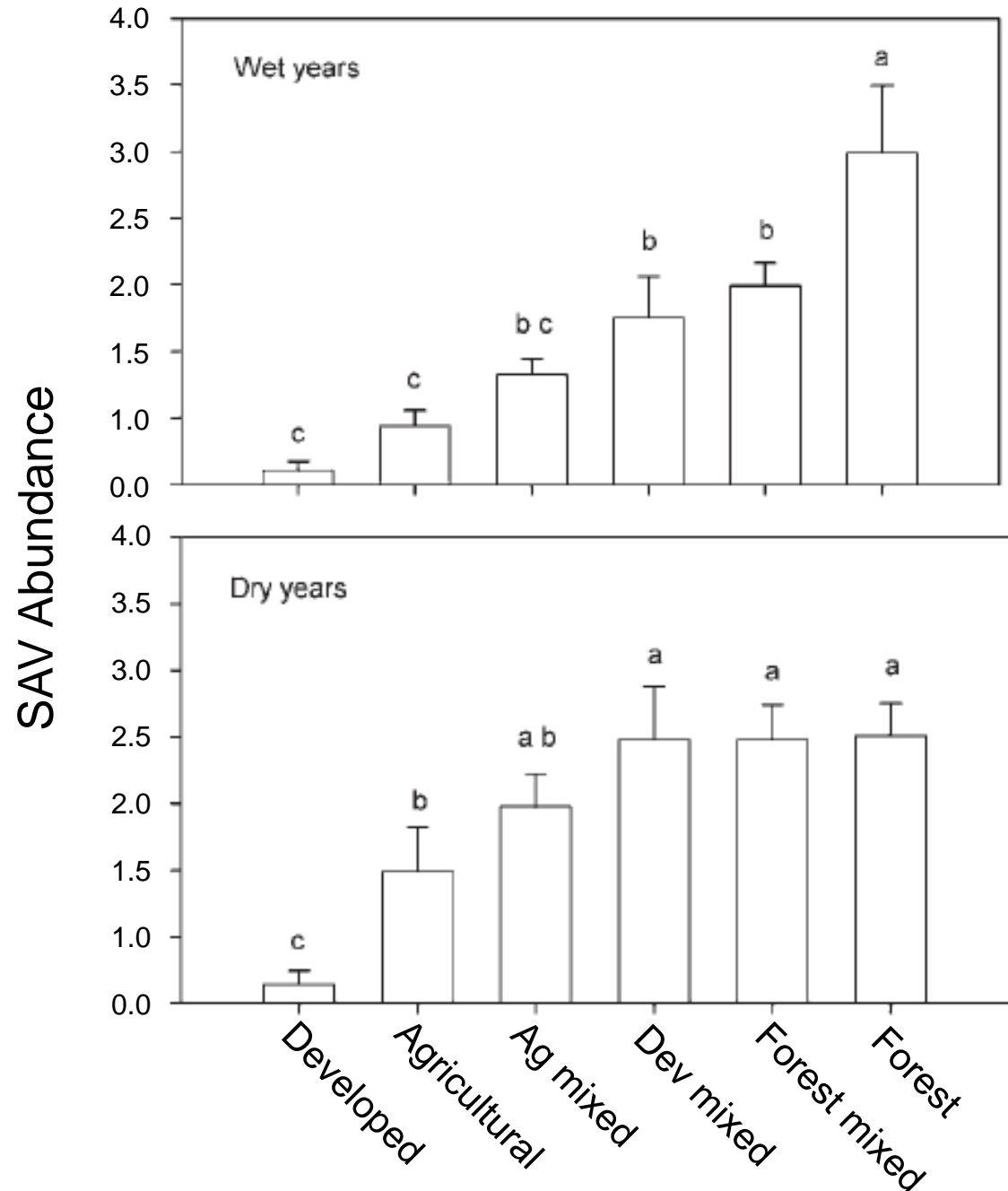
Effects of Land Use and Shoreline Armoring on Submerged Aquatic Vegetation

Weller, Patrick, Palinkas, Landry, Golden

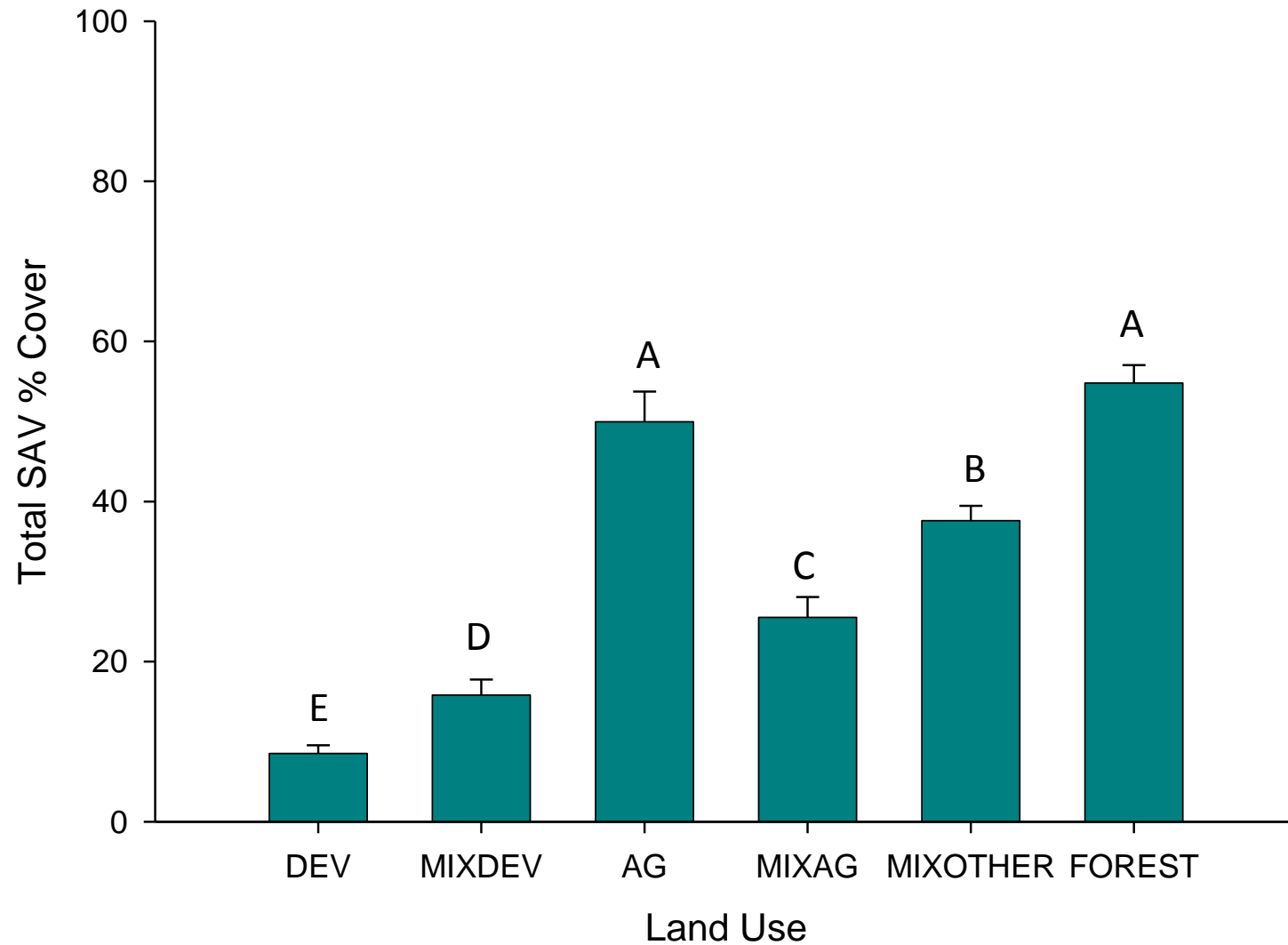
- Heavily human-dominated watersheds have significantly less SAV abundance
- The SAV that is present in human dominated systems is generally less dense (except ag, possibly due to local nutrient enhancement)
- SAV beds tend to be smaller (narrower) in more human-dominated watersheds

Interacting effects of land cover and weather

- SAV area normalized to habitat area & density weighted
- RM ANOVA
- Dev always low
- Ag better in dry years
- Forest better in wet years

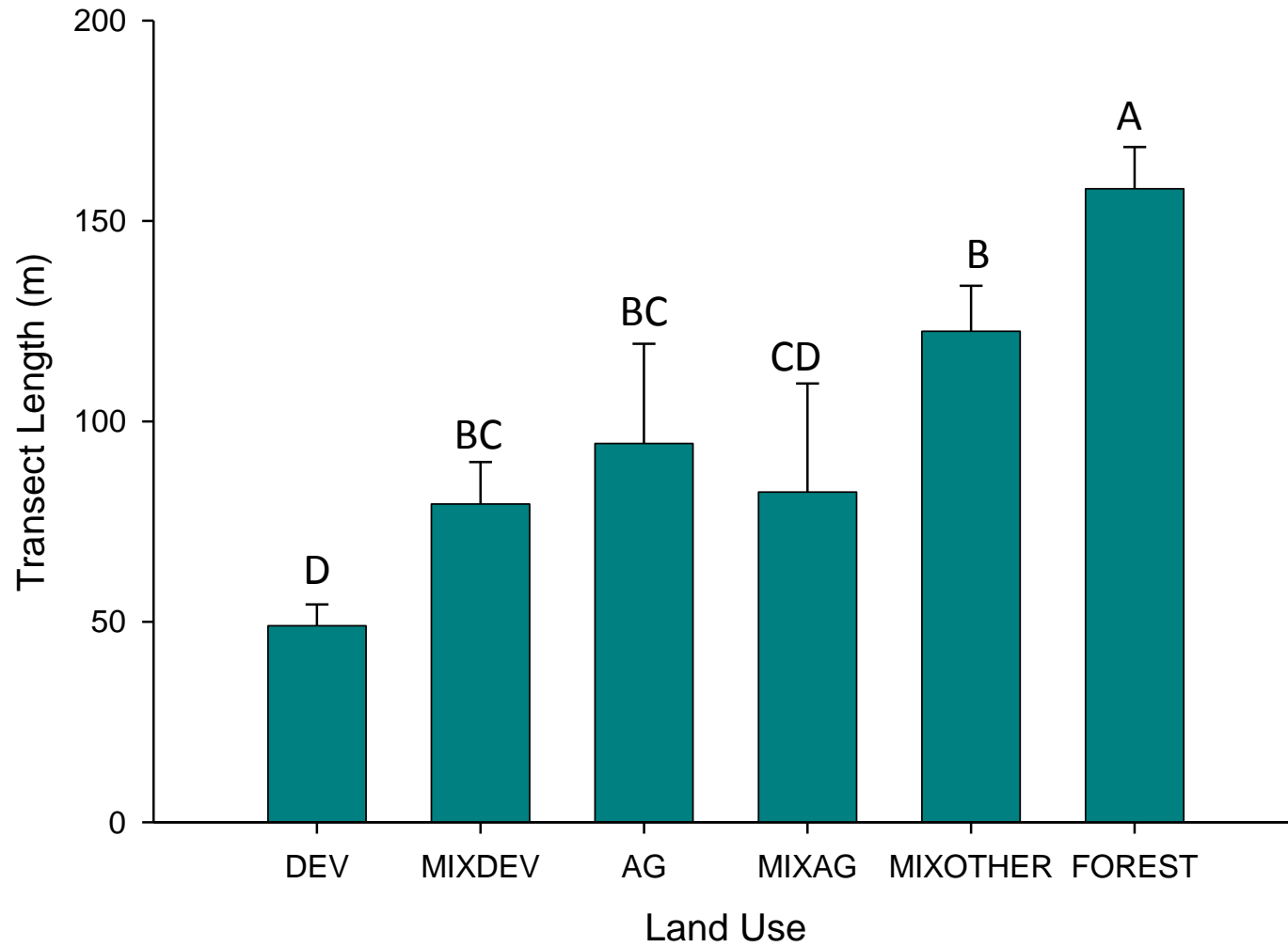


Watershed Land-use



-The farther from natural a watershed becomes, the less SAV it supports

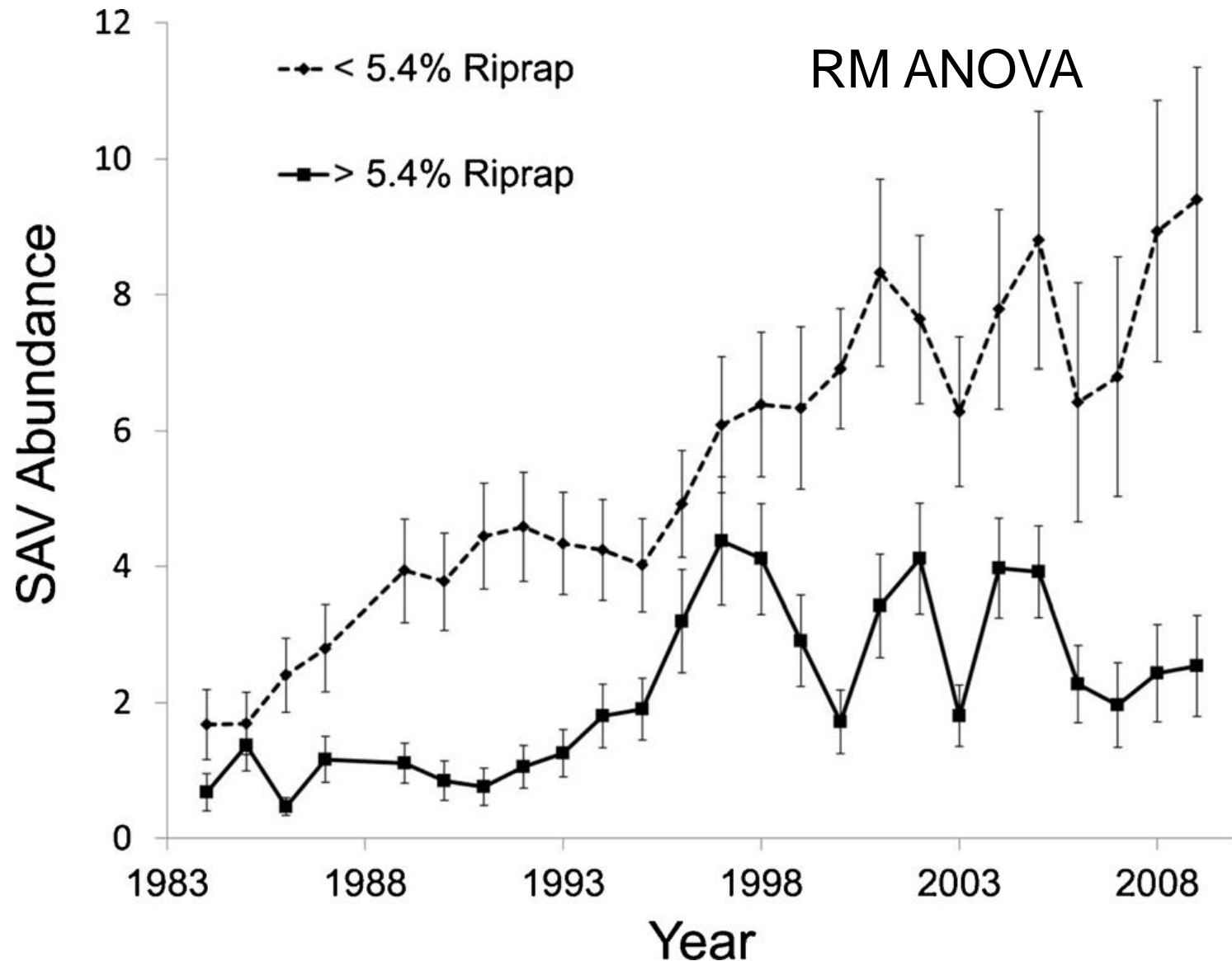
Watershed Land-use



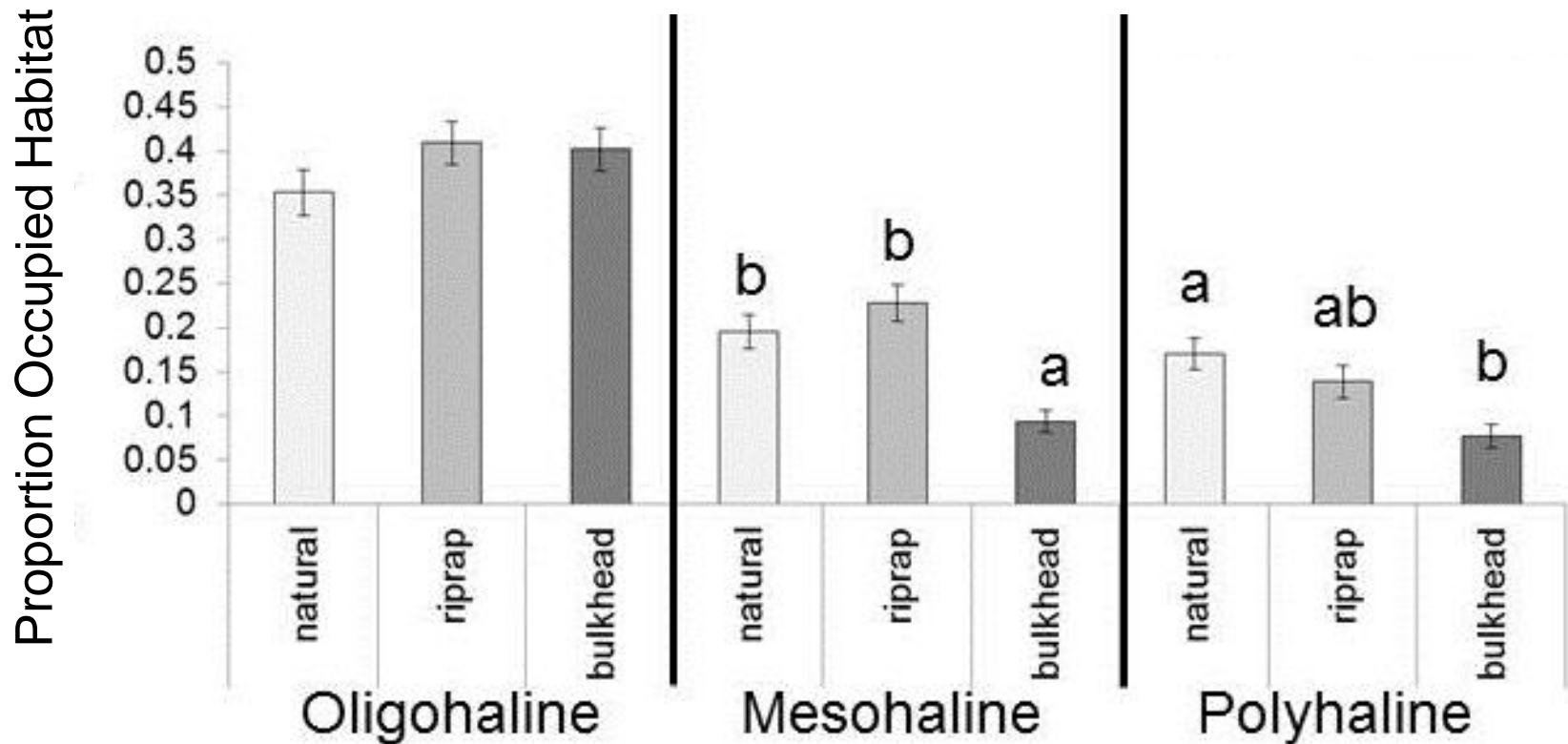
-SAV beds don't extend as far from shore as the watershed de-naturalizes

- When a subestuary has $>5.4\%$ of the shoreline in riprap, SAV abundance is significantly decreased
- Subestuaries with $>5.4\%$ riprap have lower SAV recovery trajectories
- The impact of shoreline armoring is more pronounced in the poly and mesohaline
- The impact of shoreline armoring is more pronounced in forested watershed than more human dominated ones (developed/ag dominated areas already heavily impacted)
- SAV beds are smaller, less dense and less diverse offshore of a riprap shoreline

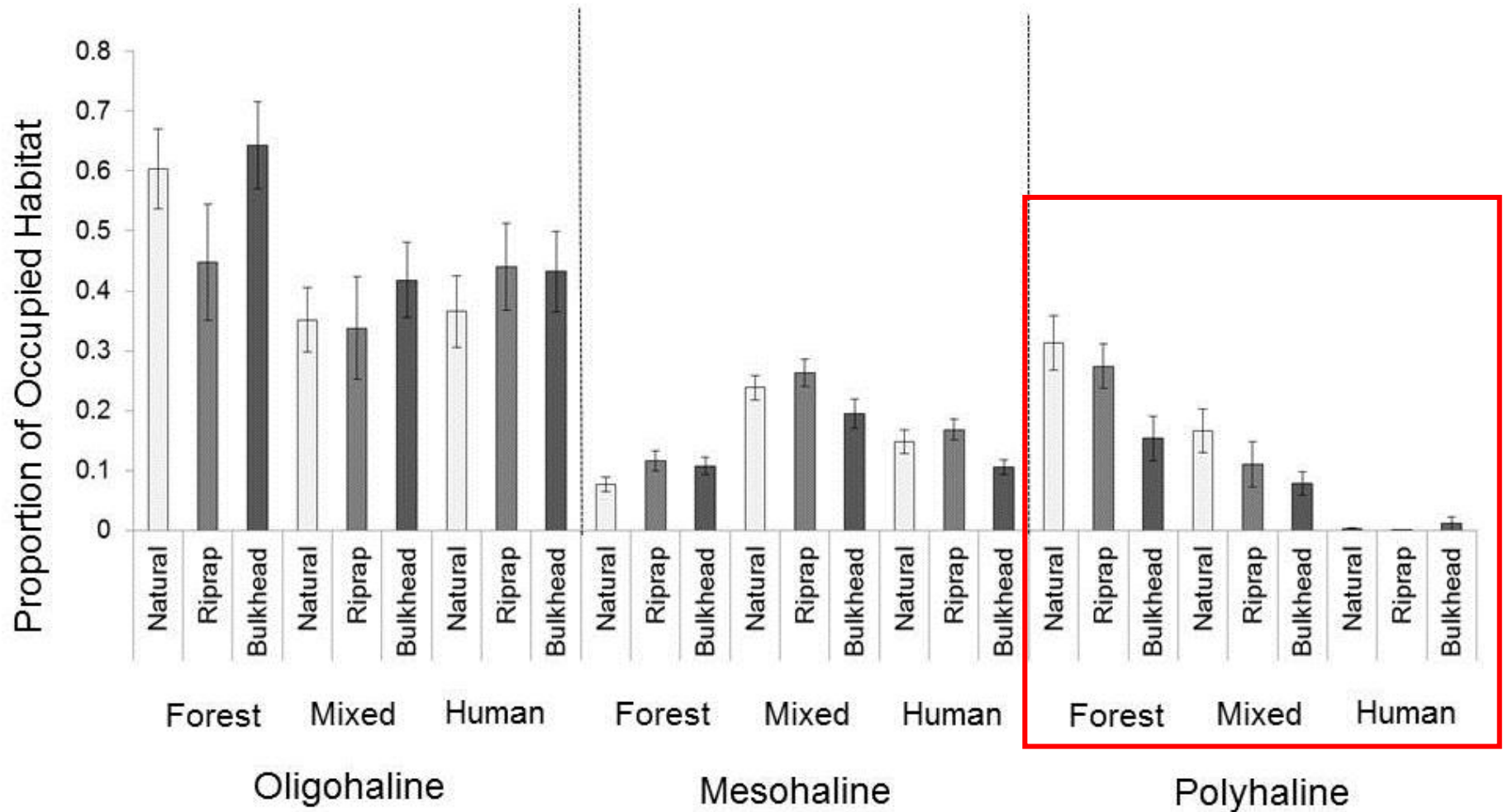
Recovery trends differ with armoring



Armoring effects vary with community



Land cover constrains effects



Ecosystem Services Provided by SAV

Wainger, Kennedy

- Anderson 1985, restoring 4,500 ac of SAV would improve value of Virginia's blue crab catch by \$4.2m (1987 dollars)
- A loss of one ha of SAV could reduce commercial harvest by \$5,409 Mykoniatis & Ready (2013)
- Jackson et al. (2015) in Med. estimate that 30-40% of commercial fishery revenue and 29% of recreational expenditures are associated with species that utilize seagrasses during at least one life stage.
- McArthur and Boland (2006) estimate that a ha of seagrass lost costs AU\$235,000 per year in fishery stock value

- Other ecosystem services
 - Shoreline protection (not quantified)
 - Property values are enhanced when there is SAV offshore, by 5 to 6% Guignet et al. (2014)
 - Carbon sequestration is worth \$600/ha/year
 - \$2 to \$8 per acre of SAV per year value of waterfowl hunting opportunities (Wainger et al)

Timeline going forward

- Have chapter authors submit final drafts of chapter by June 30, 2016
- Synthesize new HRs
- Editors and others draft combined introduction and executive summary by September 30, 2016
- Submit full document to EPA by 12/31/2016
- Submit manuscripts to peer-reviewed journals by 12/31/2016