



Roots *for* Resilience: *Strong Roots for a Changing Landscape* Initiative Overview



Wetlands Workgroup
Presentation

January 20, 2026

Goals and Agenda

Purpose: Share the context and background of the **NEW** DNR *Roots for Resilience* Initiative

Goals: Audience is informed about DNR's new Initiative and the OPEN Living Shorelines Solicitation

AGENDA:

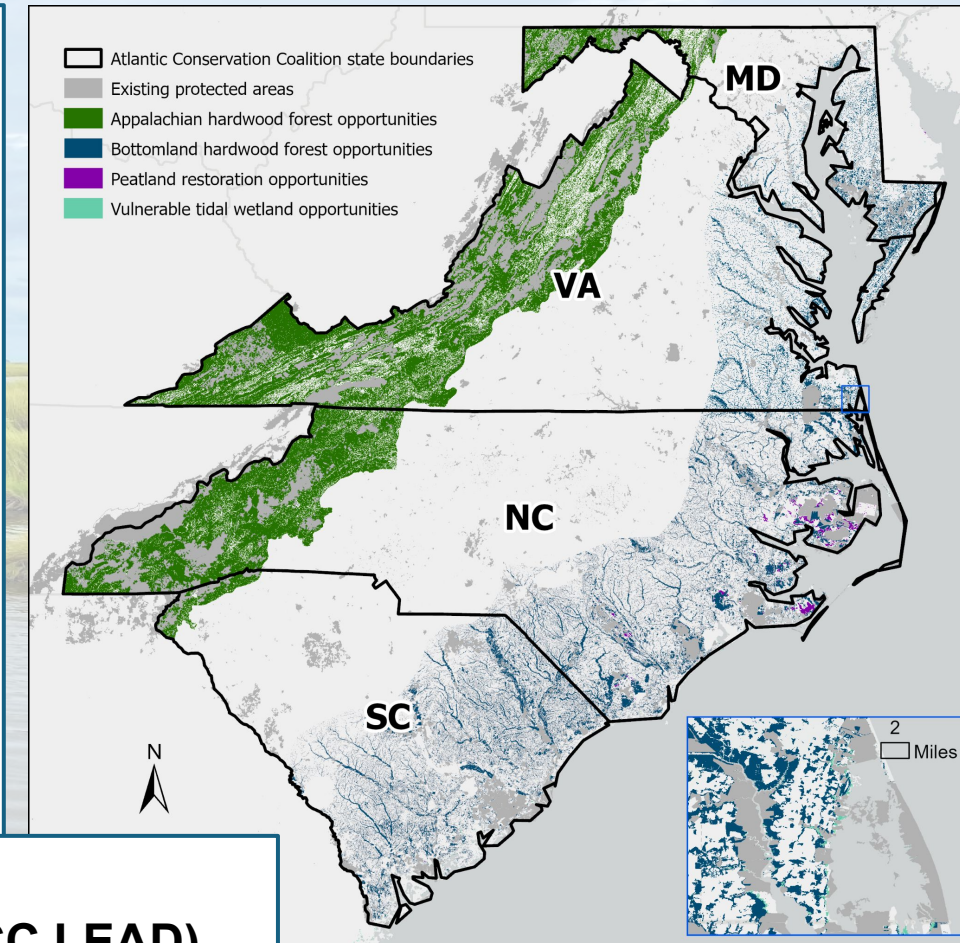
1. Background & Context of Funding
2. Maryland Department of Natural Resources - Commitments and Goals
3. Collaboration, Key Partnerships, and Subawardees
4. Living Shoreline Solicitation - Overview and Schedule
5. Resources and Contacts

Background: EPA Funding

- Funding (\$421M) through the EPA Climate Pollution Reduction Grant (CPRG) provided to the Atlantic Conservation Coalition (ACC) to implement a regional approach to **reduce greenhouse gas emissions through carbon sequestration**
- This multi-state coalition will implement carbon sequestration projects through enhanced forest management, and the protection and restoration of high-value coastal habitats and forests with the greatest carbon storage capacity
- Goal = reduce carbon emissions through conservation and restoration of natural resources while increasing community resilience to natural hazards

Coalition Partners:

- State of North Carolina (**ACC LEAD**)
- State of South Carolina
- State of Maryland
- Commonwealth of Virginia

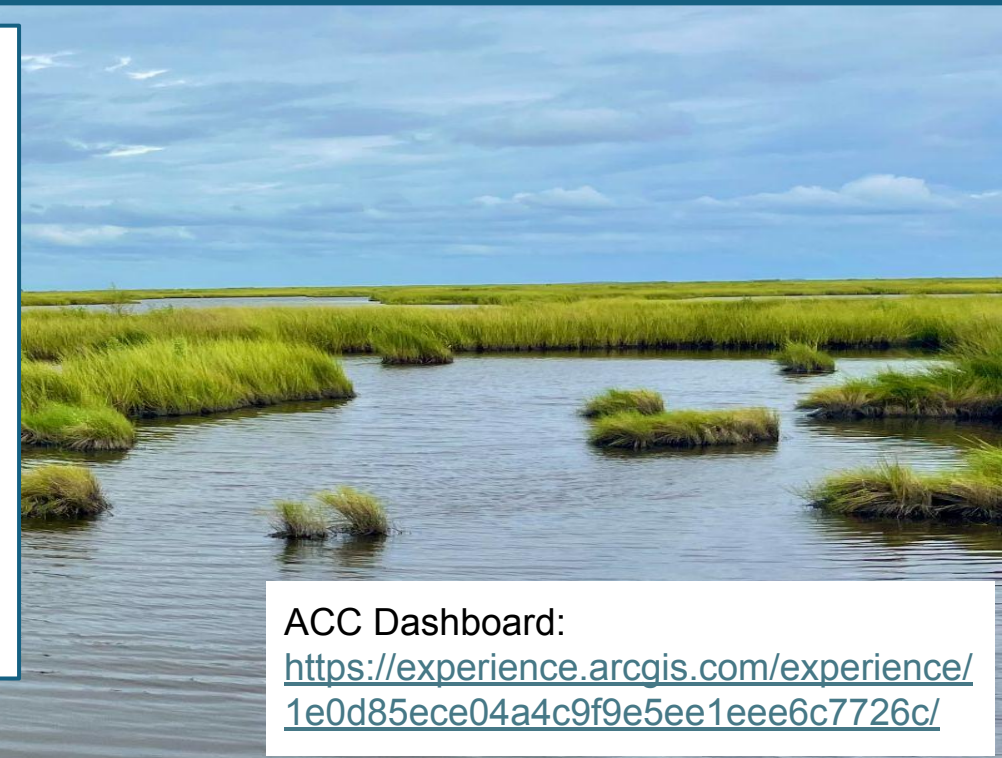


Atlantic Conservation Coalition (ACC)

ACC State Partners:

- North Carolina (ACC Lead)
- South Carolina
- Virginia
- Maryland: MDE is State Lead!
 - MDNR awarded \$43 Million from MDE
 - Funding will support our new Initiative: *Roots for Resilience: Strong Roots for a Changing Landscape*

Coalition-wide: The Nature Conservancy & Duke University

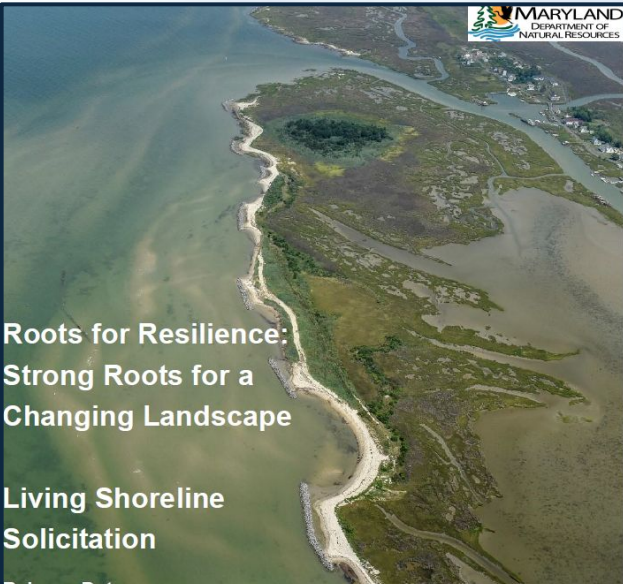


ACC Dashboard:

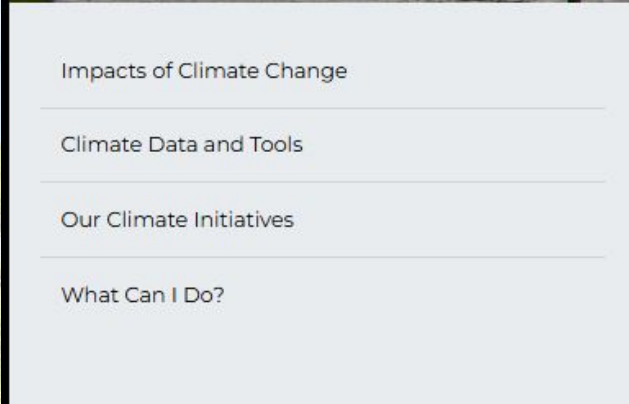
<https://experience.arcgis.com/experience/1e0d85ece04a4c9f9e5ee1eee6c7726c/>



Roots for Resilience: Strong Roots for a Changing Landscape



Release Date:
January 5th, 2026



Roots for Resilience: Open Solicitations



Living Shoreline Projects

The Maryland Department of Natural Resources has released a Request for Proposals (RFP) to solicit applications for construction, design/build, and design proposals for living shoreline projects.

Proposed living shorelines for this initiative should be located in Wicomico, Somerset, or Dorchester Counties and protect substantial areas of adjacent wetland. The goal of this RFP is to award large-scale living shoreline restoration projects that will collectively protect a total of 400 acres of adjacent high quality tidal marsh habitat.

Open opportunity: Living Shoreline Solicitation

Deadline: April, 6, 2026.

- View the [Request for Proposals \(RFP\)](#).
- View the [Required Narrative Questions to Answer](#).
- [Submit an application](#).

Open Solicitation Webpage:
mddnr.info/R4R-RFP

Our R4R Initiative:

- Funded by EPA CPRG!
- Will support Maryland's LES adapt to challenges of climate change.
- Includes tree planting, coastal habitat restoration, and community engagement.
- Unites existing relationships, initiatives, and passions on the LES to preserve this rapidly changing landscape.

Maryland DNR Commitments



Projects will count towards meeting the Maryland goals for the Wetland Outcome for the Chesapeake Bay Program Watershed Agreement

- Overall Goal: implement landscape-scale restoration projects
- Where: Maryland Eastern Shore (ES)
- Focal Area: Communities affected by flooding and sea level rise
- Timeline: <5 years (**END DATE: August 2029 = IMPLEMENTATION COMPLETED**)
- Forest Carbon Initiatives:
 - *Mid and Lower ES (Caroline, Talbot, Dorchester, Somerset, Wicomico, Worcester)*
 - Afforestation
 - Improved forestry management
- Blue Carbon Initiatives:
 - *Lower ES (Dorchester, Somerset, Wicomico, Worcester)*
 - Marsh restoration
 - Tidal marsh re-connectivity
 - Living shorelines (that will provide marsh protection)
 - Develop & Implement Coastal Resilience Management Plans
- Community Outreach & Engagement

Maryland DNR [Detailed] Commitments

Blue Carbon - Coastal Wetlands:

- Restore 200 acres of marsh
- Protect 400 acres marsh through living shorelines projects
- Restore the tidal connectivity of 400 acres of marshes
- Using conservation easements and Coastal Resilience Management Plans, work with private landowners to develop 100 plans to transition land to wetlands or actively restore wetlands on their property (40 total acres)

Forest Carbon - Afforestation & Improved Management:

- Restore 500 acres of Atlantic white-cedar, bald-cypress, shortleaf pine - public & private lands
- Prioritize restoration of the black-banded sunfish
- Evaluate forest stand condition with drones
- Improve forestry management on at least 1,000 acres

Community Outreach & Engagement:

- DNR to fund **Community Liaisons**
- Conduct landowner outreach
- Hold community events
- Work with willing private landowners



How Can We Achieve these Goals?



Collaboration:

- DNR Internal Unit Collaboration
- DNR External Collaboration with MDE (our funder is also our regulator)

Partnerships: Delmarva Restoration Conservation Network (DRCN); Academic Partners (UMD/Towson)

Subawardees:

- Audubon (Marsh restoration; tidal connectivity assessments & implementation)
- Lower Shore Land Trust (Coastal Resilience Management Plans)
- Eastern Shore Land Conservancy (Coastal Resilience Management Plans)

Community Liaisons: to support outreach and engagement; known/trusted members to support work

-Released a Solicitation to fund Living Shoreline projects!

-Opened New Open: Wetland Wildlife Restoration Specialist:

Apply here: <https://www.jobapscloud.com/MD/sup/bulpreview.asp?b=&R1=26&R2=001685&R3=0001>

[Recruitment #26-001685-0001]



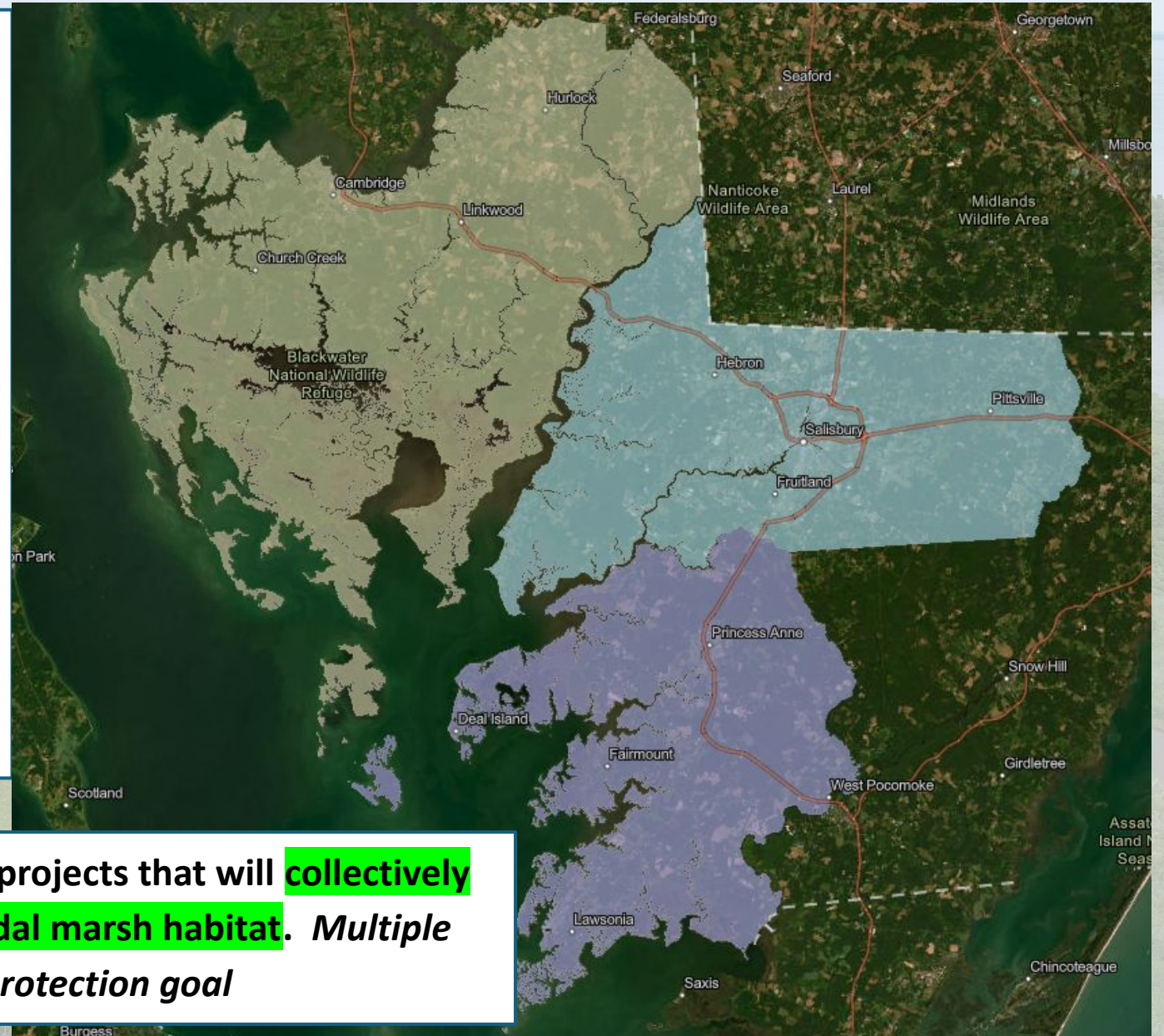
Marshes for Tomorrow:
A Strategic Plan for the Restoration & Resilience of Maryland's Salt Marshes

Roots for Resilience:
Strong Roots for a Changing Landscape



Living Shoreline Solicitation Overview

- Living Shoreline projects must protect coastal wetlands
- Eligible Project Locations:
 - **Dorchester County**
 - **Wicomico County**
 - **Somerset County**
- Minimum request = **\$1 million**
- Eligible Applicants = Nonprofits, Local Governments, Universities
- Total available funds = ~\$17M
- Applications for design, construction, design/build of living shorelines



GOAL = award large-scale living shoreline restoration projects that will collectively protect a total of 400 acres of adjacent high quality tidal marsh habitat. Multiple awards are expected to be made to meet our marsh protection goal

Living Shoreline Solicitation Overview



- **Project Location**-> Within eligible counties & in Chesapeake Bay Watershed: Dorchester, Wicomico, and Somerset Counties
- **Project Need and Context**-> Public land, active erosion documented, marsh protection
- **Cost effective**-> At least 2.3 acres of marsh per 100 ft living shoreline protected
- **Readiness and Ability to proceed**-> Realistic timeline for design/permitting/construction; construction completed by July 2029
- **Long Term Success**-> Sea Level Rise incorporated into design, appropriate stakeholders involved, Adaptive Management plan

Prioritized Project Types

Priority #1: Construction-ready request for living shoreline project*

- Highly suggested to apply
- Design complete [or near completion]
- Permits in-hand [or ready to be submitted]
- Project should maximize marsh protection



Priority #2: Design/Build request for living shoreline project*

- Encouraged to apply for design and construction funding
- Funds for permitting are eligible
- Project should maximize marsh protection



Priority #3: Design/permitting request for living shoreline project*

- Welcome to apply, but future construction funding not guaranteed
- Project should maximize marsh protection

**Project construction to be completed by July 2029*

Potential Restoration Techniques for Living Shorelines



Projects should avoid natural resources (SAV, existing wetlands, etc.) to maximum extent practicable

Living Shoreline Project Targeting Map

Map supports project eligibility, identification, and prioritization:



Define Design Details:

- Total wetland area protected
- Living Shoreline length
- Design type (e.g., headland breakwater, sill, groin)

Define existing conditions & connection to natural resources:

- SAV, habitat, wetlands, migration corridors.)

Define Infrastructure Protection:

- Public facilities, homes, and/or utilities.

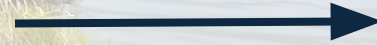
Map weblink: <https://arcg.is/vCaSW3>

Map guidance:

https://dnr.maryland.gov/outdoorrec/Documents/RfR_Living-Shoreline-Prioritization-Explanation_Guidance.pdf

Living Shoreline RFP Timing

- RFP Release
- Info sessions and site visits
- RFP Deadline
- Technical Review
- Project Selection
- Applicants Notified of Awards
- Project Funding Begins



January 5th, 2026

January-March 2026

April 6th, 2026

April-May 2026

June 2026

July 2026

July 2026-July 2029

Resources



Mapping Tutorial Session: Tuesday, February 3, 2026 (2 pm to 3 pm): RSVP here:

<https://docs.google.com/forms/d/e/1FAIpQLSfU4VHQOluNyiAHm0-FFFjB8EaQF7XhkDQMwur3VCg126xmqw/viewform>

Office Hours: Roots for Resilience: Strong Roots for a Changing Landscape

Fridays: 1:00 – 2:00pm

Google Meet joining info: <https://meet.google.com/jtz-zkfh-fip>

Or dial: (US) +1 401-903-3424 PIN: 617 166 843#

Ari Engelberg: ari.engelberg@maryland.gov

Morgan Corey: morgan.corey@maryland.gov

Resources

The [University of Maryland Environmental Finance Center \(EFC\)](#) advances finance solutions to environmental challenges - specifically focused on strengthening the capacity of local leaders to access funding!



EFC has an agreement with UMD-EFC to support applicants and provide technical assistance through [MDE's Local Government Climate Action Support Program](#).

Please reach directly out to our UMD-EFC contacts:

Brandy Espinola or Kristin Mielcarek at efc_climateaction@umd.edu



Maryland
Department of
the Environment



ENVIRONMENTAL
FINANCE CENTER

****DNR welcomes local government applicants (counties, cities, towns) in eligible areas to respond to the RFP!****

MARYLAND LOCAL GOVERNMENT CLIMATE ACTION SUPPORT



Questions?



**Roots *for* Resilience:
*Strong Roots for a Changing
Landscape***

