

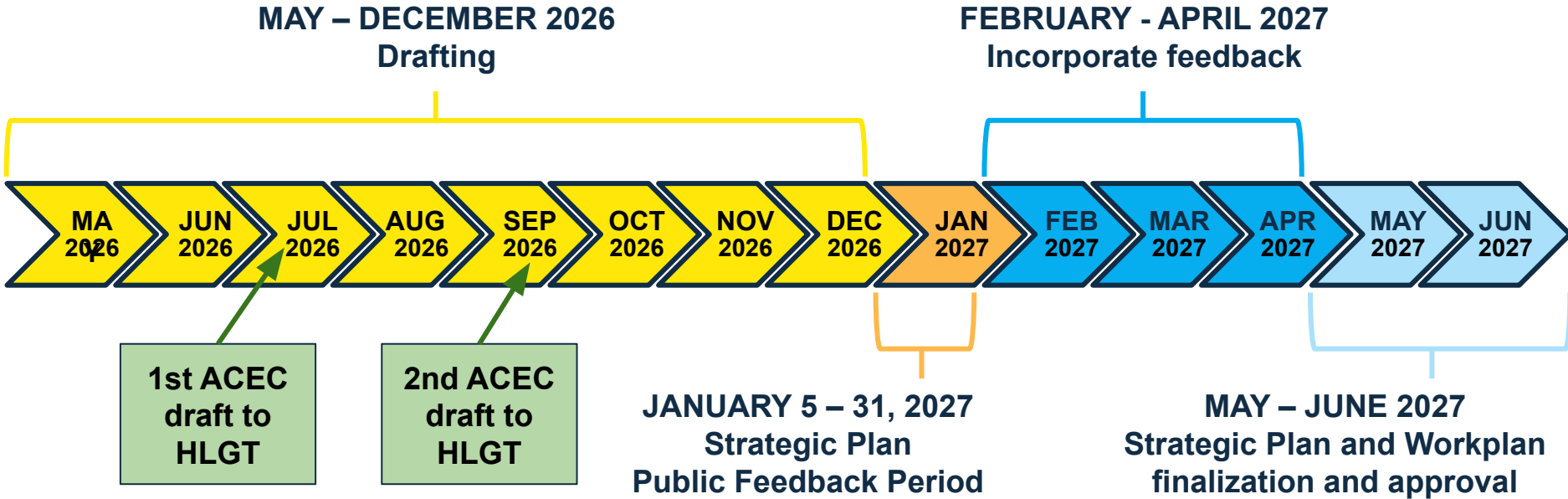


**Chesapeake Bay Program**  
*Science. Restoration. Partnership.*

Adaptation Workgroup Meeting - June 24, 2026

# Management Strategy Development Timeline and Template

# Management Strategy Timeline

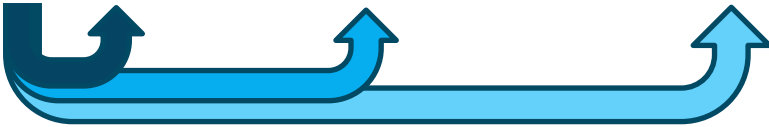


# Accountability and Adaptive Management



MS Develop. (up to 18 months)	Management Strategy (6 yrs) July 2027 – June 2033						Management Strategy (6 yrs) July 2033 – June 2039						Agreement Revision
	Workplans (3 yrs) July 2027 – June 2030			Workplans (3 yrs) July 2030 – June 2033			Workplans (3 yrs) July 2033 – June 2036			Workplans (3 yrs) July 2036 – June 2039			

2026 2027 2028 2029 2030 2031 2032 2033 2034 2035 2036 2037 2038 2039 2040



- Annual Check-Ins** – extended PSC meetings that communicate progress, and address and prioritize implementation needs
- Triennial Reviews** – cross-program review & symposium to document successes and challenges and initiate new Workplans
- Strategy and Program Evaluation** – assess the current progress towards achieving the Goals and Outcomes of the Agreement, evaluate the efficacy of existing Management Strategies and identifies opportunities for improvement
  - In 2040, the Strategy and Program Review will prompt revision to the Chesapeake Bay Watershed Agreement

# Management Template – Outcome Subchapter

- Baseline and Current Condition
- Monitoring Progress and Indicators
- **Situation Analysis – Identify challenges that will impact progress towards attaining the outcome and targets; recommend priority challenges for Goal Team and denote challenges associated with changing environmental conditions**
- Snapshot of Signatory Programs (on hold until signatories assign workgroup members)
- **Management Approaches for Outcome – Actions to address challenges and identify the partnership’s role; include how local governments and stakeholders will be kept informed and involved**
- Participating Partners

# ACEC Outcome

**Increase the capacity for pursuing solutions, including those that are nature-based, to improve planning and responses to changing conditions while balancing long-term resiliency of watershed communities, economies, and ecosystems.**

Focuses on Place-based, Capacity-building to advance coastal and inland nature-based solutions

## TARGETS

- By 2040, support at least seven sub-watershed areas with knowledge-sharing and technical assistance to identify adaptation options with a preference for nature-based solutions. These solutions include restoration and protection projects that will help address risks to people, infrastructure and habitats from changes in temperature, precipitation and landscapes.
- By 2040, inform and lead to an increase in the implementation of the identified adaptation options that prioritize and integrate nature-based solutions in the above sub-watershed areas.

# Adaptation Workgroup— Principles

- Serve as a connector and translator
- Build strategic capacity for adaptation
- Use a place-based and needs approach
- Prioritize implementation with science and planning
- Foster an action-oriented partner network



AI-Generated

ACEC Thought Partners: Ben McFarlane (HRPDC), Cassie Davis (NY), Jackie Specht and Kristin Saunders (MD)

# Value Added Strategies

- Empower networks through partnership-building and shared-learning to advance innovation with nature-based solutions for changes in precipitation, storm events, temperatures, and sea level.
- Advance pre and post-monitoring of nature-based solutions to inform adaptive management through the development of common best practices.
- Standardize innovation to better adapt to changing environmental conditions.

# NbS Innovation Example – Concept to Implementation

- Switch to Ben's presentation

# Identify Outcome Challenges

Three random breakout groups with assigned facilitator

## Instructions:

- Identify challenges that will hinder progress on the Adapting to Changing Environmental Conditions Outcome
- Determine as group whether it is a challenge that can be addressed by the CBP through the workgroup and participating partners (yes or no with brief discussion; more in depth strategies will be discussed later)

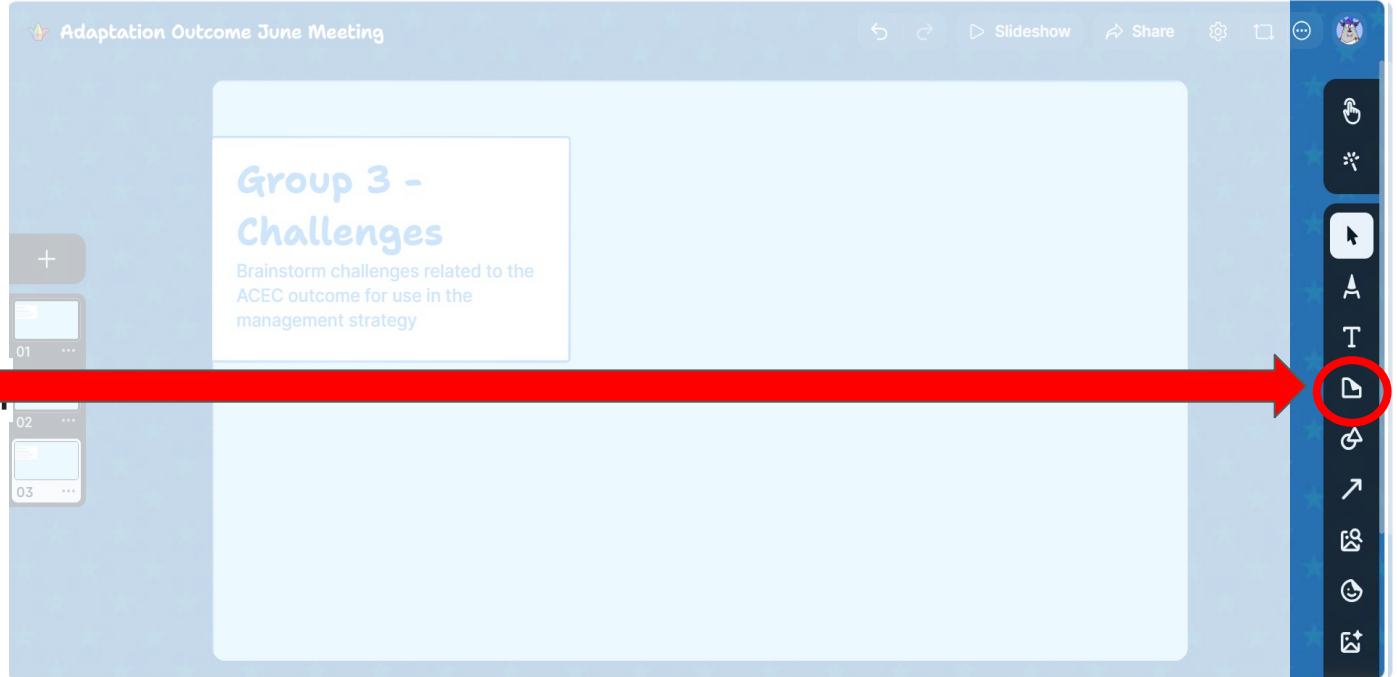
# Padlet



Find the padlet [here](#)

To add a sticky note on the right side of the screen

You can edit and size as you like



# Identified Challenge and Strategy (CBP can Influence)

**Challenge:** How partnership works on this outcome; vast majority of watershed is privately owned; how to identify; how to engage

How to work with private property owners and work across watersheds

## **Management Strategy:**

- Bring in groups that work with private landowners (soil conservation districts) to connect with the private landowners
- Encourage other partners to replicate programs that are successful in working with private landowners; also see examples of programs that haven't worked as well; develop common engagement strategies for program effectiveness

# Identified Challenge and Strategy (CBP can Influence)

**Challenge:** Identifying the role our WG will play that adds value; how to act as a connector and provide capacity/ value to existing programs

## **Management Strategy:**

- Spend time identifying alignment across organizations to determine where the connector role could support progress towards the outcome
- Hands on discussions with interested partners - responding to requests for assistance. Promoting collaborative partnerships
- Network mapping; providing a list of technical assistance partners; peer-to-peer connections/ learning opportunities; roundtables for complex issues
  - How do we track metrics, e.g., projects that were successful due to collaborative/connector capacity added

# Identified Challenge and Strategy (CBP can Influence)

**Challenge:** How do we select watersheds that are diverse and representative (habitats, communities, etc.)

## **Management Strategy:**

- Have short-, mid-, long-term goals
- Start small (2 sub watersheds) and build from there based on lessons learned; incremental approach; tidal & nontidal - to determine how best to operate in these landscapes
  - Success stories / lessons learned from Envision the Choptank
- Build a list of candidate watersheds
- How to capture where we add value;
- How to utilize and manage GIT funding to support our work