



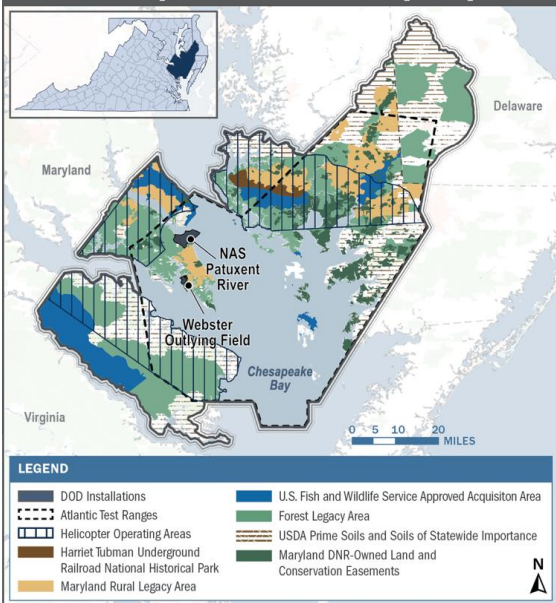
Chesapeake Bay Program  
Science. Restoration. Partnership.

# ***Watershed and Landscape Scale Conservation Initiatives***

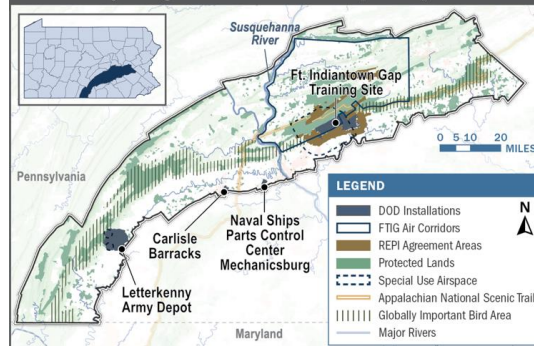
Opportunities for Strategic Land Conservation

# Sentinel Landscapes

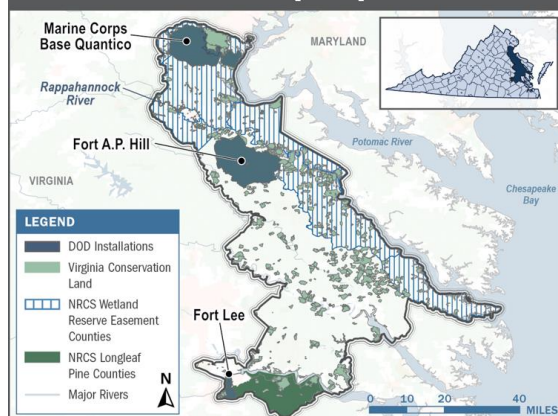
Middle Chesapeake Sentinel Landscape Map



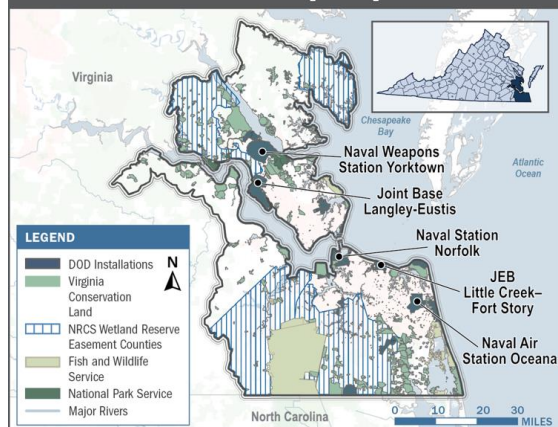
Kittatinny Ridge Sentinel Landscape Map



Potomac Sentinel Landscape Map



Tidewater Sentinel Landscape Map



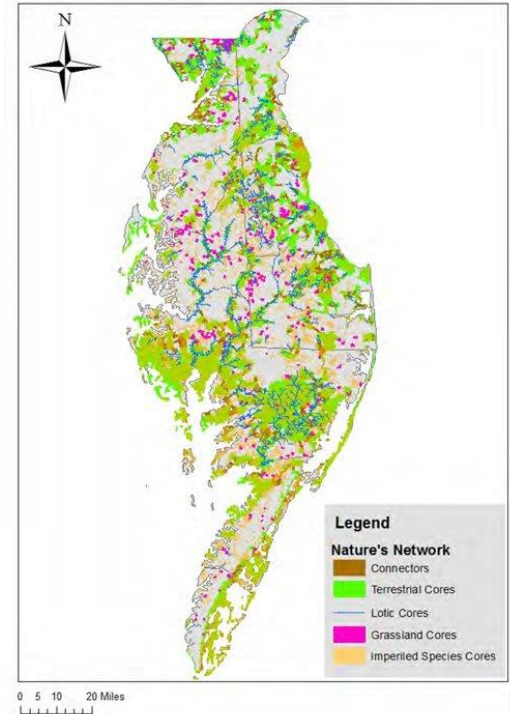
# Delmarva Restoration and Conservation Network

The DRCN is a collaborative of local, state, and federal government agencies and NGOs working with private and public landowners and local governments to identify the most important places to protect and restore, and to obtain support and funding for voluntary restoration and conservation on the Delmarva Peninsula.

**Mission:** Our mission is to restore and conserve Delmarva's landscapes, waterways, and shorelines that are special to its people, fundamental to its economy, and vital for its native fish, wildlife, and plants.

**Vision:** We envision a Delmarva where native fish and wildlife thrive; working lands and waters enrich the lives of those who live, work, and play here; and rich forestlands and coasts support and sustain present and future generations.

Delmarva Restoration and Conservation Network  
Nature's Network Core Map



# PA Conservation Landscapes

Throughout Pennsylvania, eight large regions are working together to drive strategic investment and actions around sustainability, conservation, community revitalization, and recreational projects.

Known as conservation landscapes, these collaborations are found in regions where there are strong natural assets, local readiness and buy-in, and state-level investment and support.

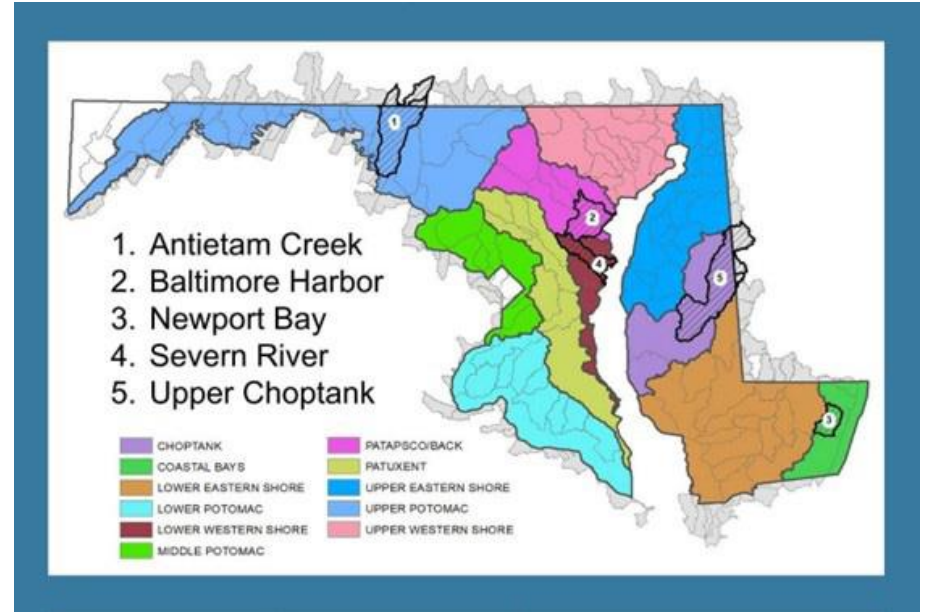


# MD Whole Watersheds

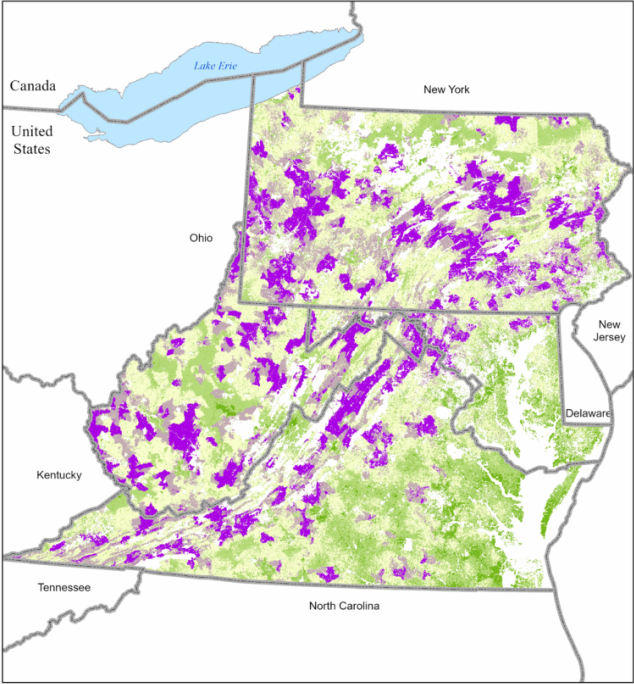
Legislatively established through the Whole Watershed Act (SB 969/HB 1165) in April 2024.

Created to provide a highly collaborative, science-based approach to accelerate restoration of the Chesapeake Bay and Atlantic Coastal Bays and their watersheds.

The Whole Watershed Program is a five-year pilot program, targeting five watersheds with the goal of improving watershed health through a diverse selection of environmental actions



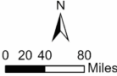
# ICPRB Land Prioritization Mapping To Protect Water Quality



— Lake Erie  
— State Boundaries

Cumulative Prioritization  
of Parcels (Study Area)  
Parcel Priority Rank

- 5 (79 - 99)
- 4 (70 - 78)
- 3 (63 - 69)
- 2 (55 - 62)
- 1 (0 - 54)



Parcels ranked using a natural breaks classification  
method for the entire study area





# Thank you!

- **Healthy Landscapes:**

<https://www.chesapeakebay.net/what/goals/healthy-landscapes>

- **Protected Lands:** <https://www.chesapeakebay.net/who/group/protected-lands>