



# CACAPON & LOST RIVERS LAND TRUST

Protecting the forests, farms, rural heritage and waters of the  
Cacapon & Lost Rivers Watershed





# CHESAPEAKE BAY WATERSHED

PITTSBURGH

PHILADELPHIA

NEW  
JERSEY

CACAPON  
WATERSHED

MARYLAND  
BALTIMORE

CACAPON RIVER

WEST  
VIRGINIA

WASHINGTON

DELAWARE

POTOMAC RIVER

VIRGINIA

CHESAPEAKE  
BAY

ATLANTIC  
OCEAN



# Cacapon & Lost Rivers Watershed

680 sq miles of ridges & valleys

Most biodiverse of the Potomac River tributaries

A disappearing river!





# Cacapon & Lost Rivers Watershed

Highly forested  
OUTSIZED ecosystem services  
Clean air & water for downstream communities





# Cacapon & Lost Rivers Watershed

Great lungs of the East





# Cacapon & Lost Rivers Watershed



80%+ private land  
Small family farms





# Cacapon & Lost Rivers Watershed



Great recreation





# Cacapon & Lost Rivers Watershed



45+ Rare, Threatened, Endangered Species







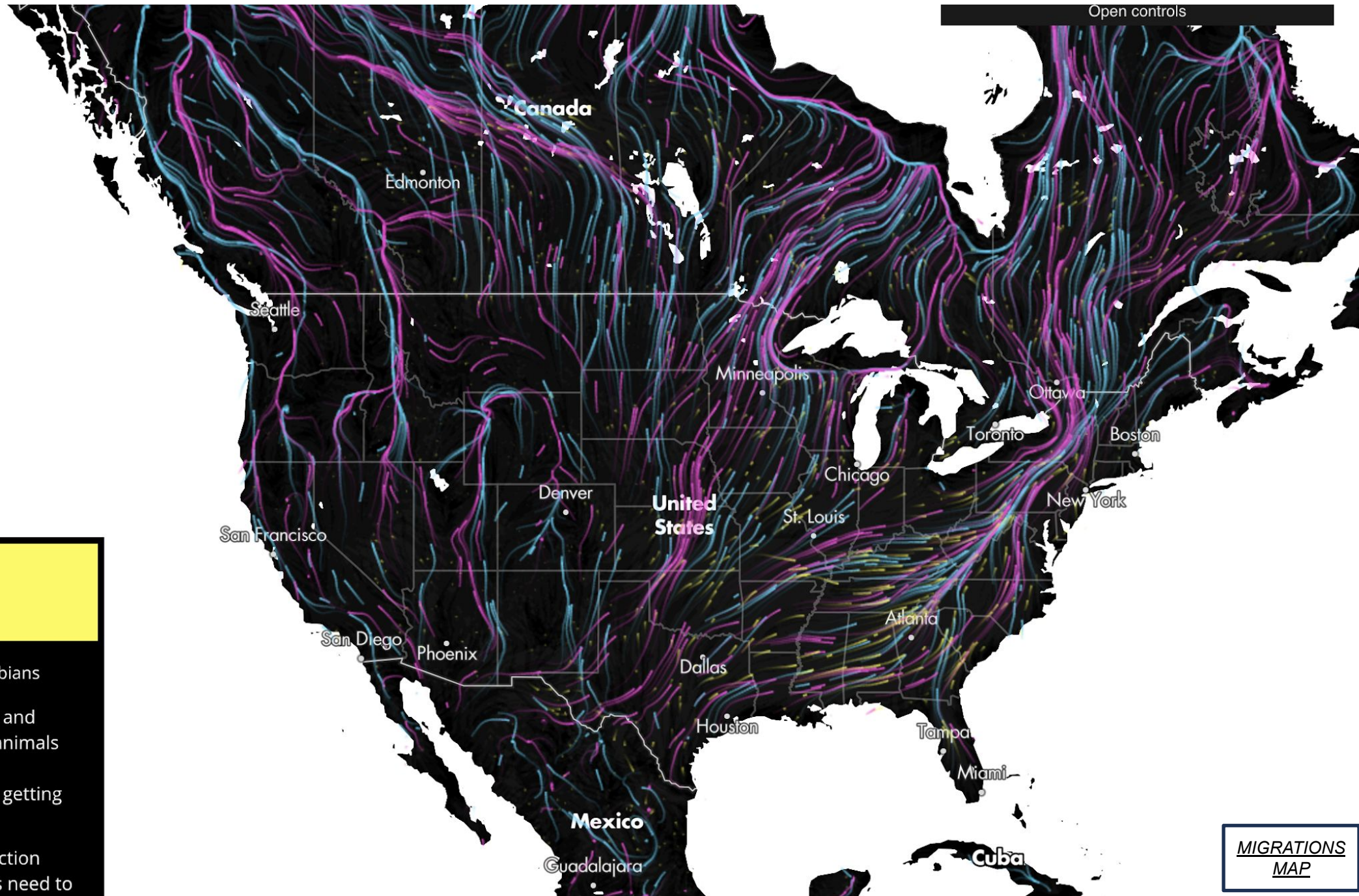
Open controls

# MIGRATIONS IN MOTION

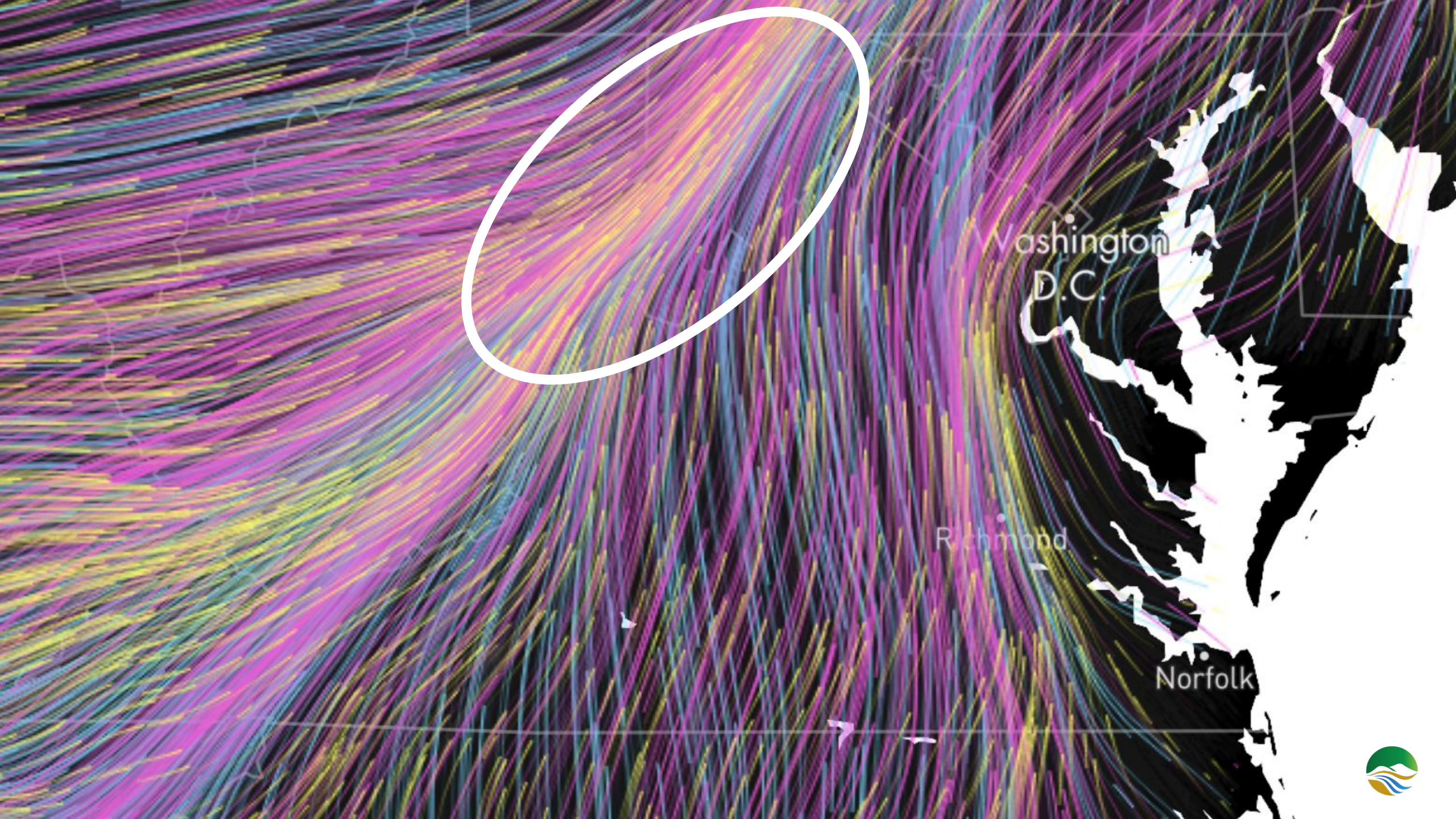
● Birds ● Mammals ● Amphibians

As climate change alters habitats and disrupts ecosystems, where will animals move to survive? And will human development prevent them from getting there?

This map shows the average direction mammals, birds, and amphibians need to







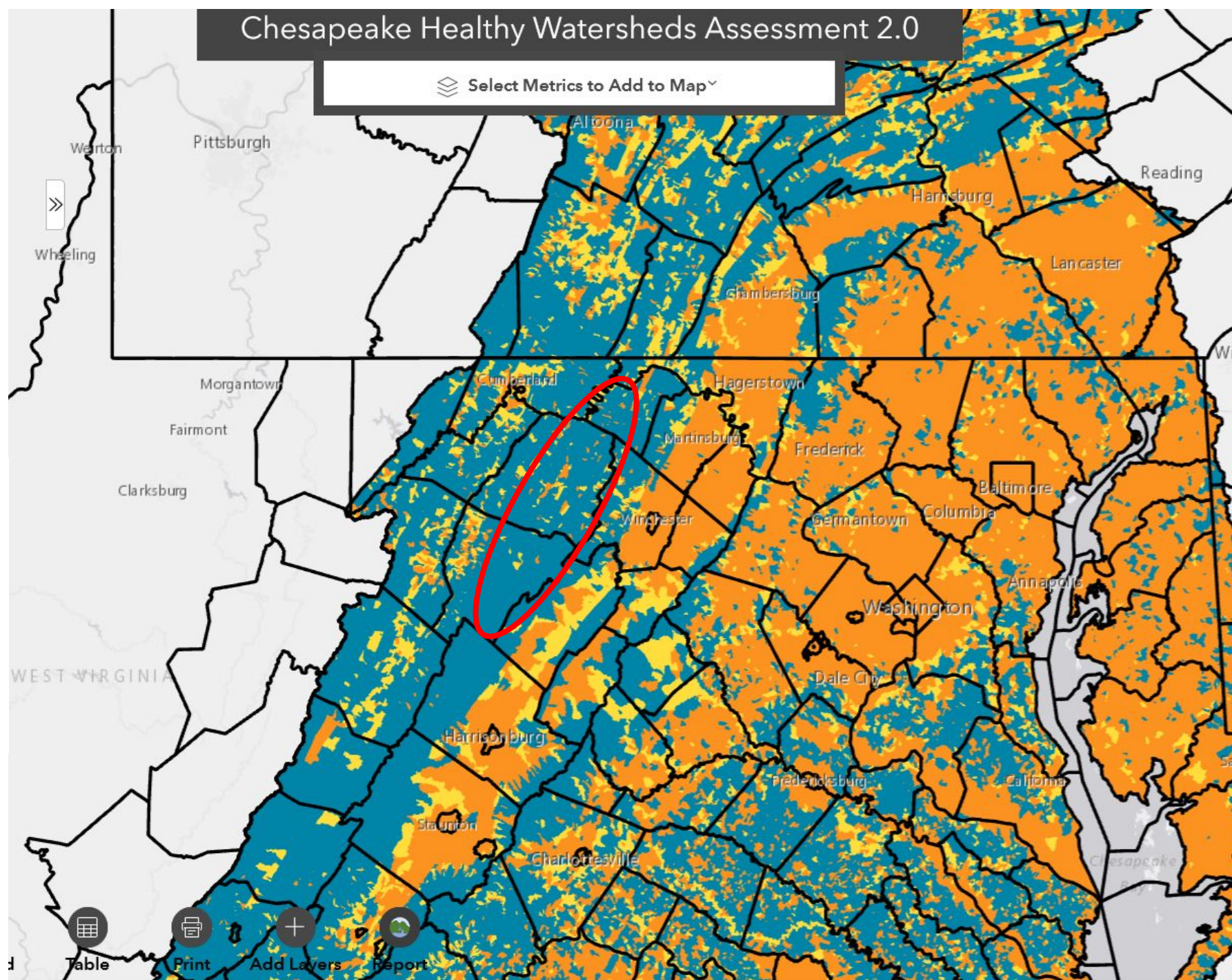




**Chesapeake Bay Program**  
Science. Restoration. Partnership.

### Predicted BIBI Score

Predicted BIBI Score







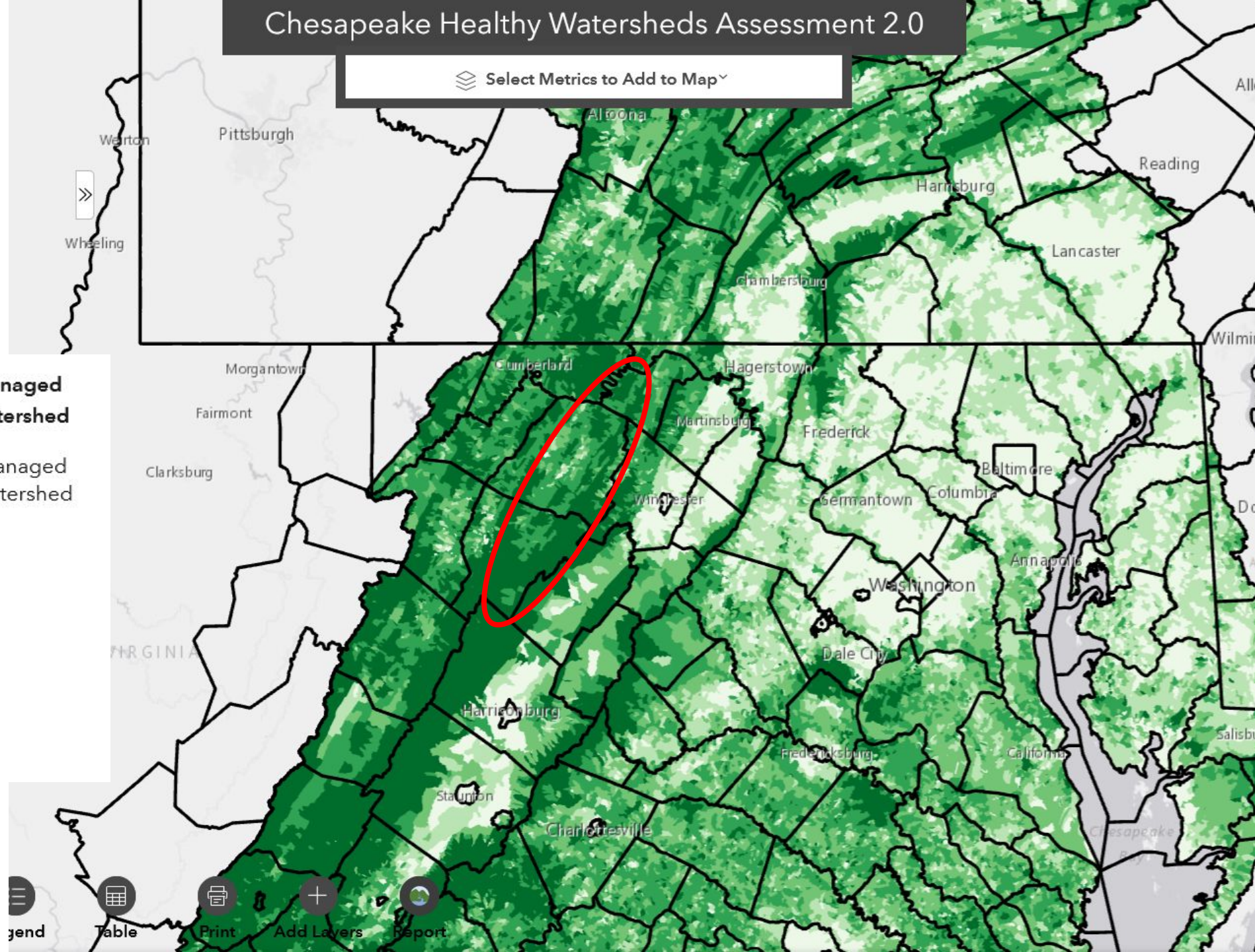
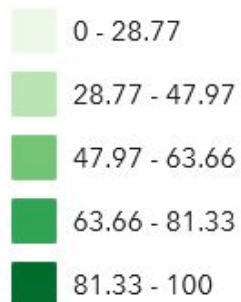
**Chesapeake Bay Program**  
Science. Restoration. Partnership.

# Chesapeake Healthy Watersheds Assessment 2.0

Select Metrics to Add to Map

## % Tree Cover with Unmanaged Understory 2017/18 Watershed

% Tree Cover with Unmanaged Understory 2017/18 Watershed



Legend



Table



Print



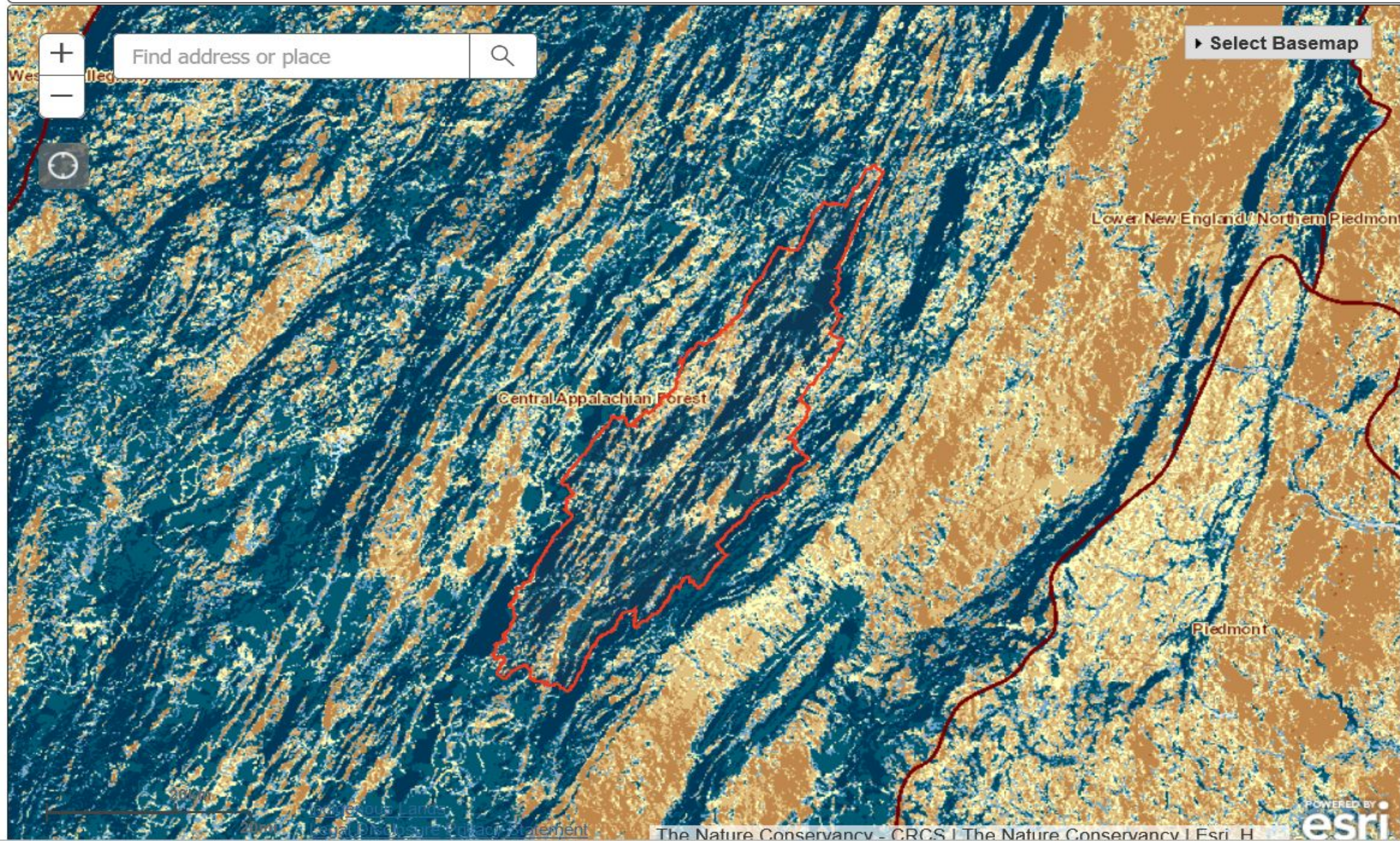
Add Layers



Report







Climate  
Resiliency





# Pressures

- 21<sup>st</sup>C Westward expansion
- Proximity to metro areas
- Rising land value prices out locals
- Solar & wind utility siting
- Electric transmission lines

↙  
Forest fragmentation &  
runoff polluting streams

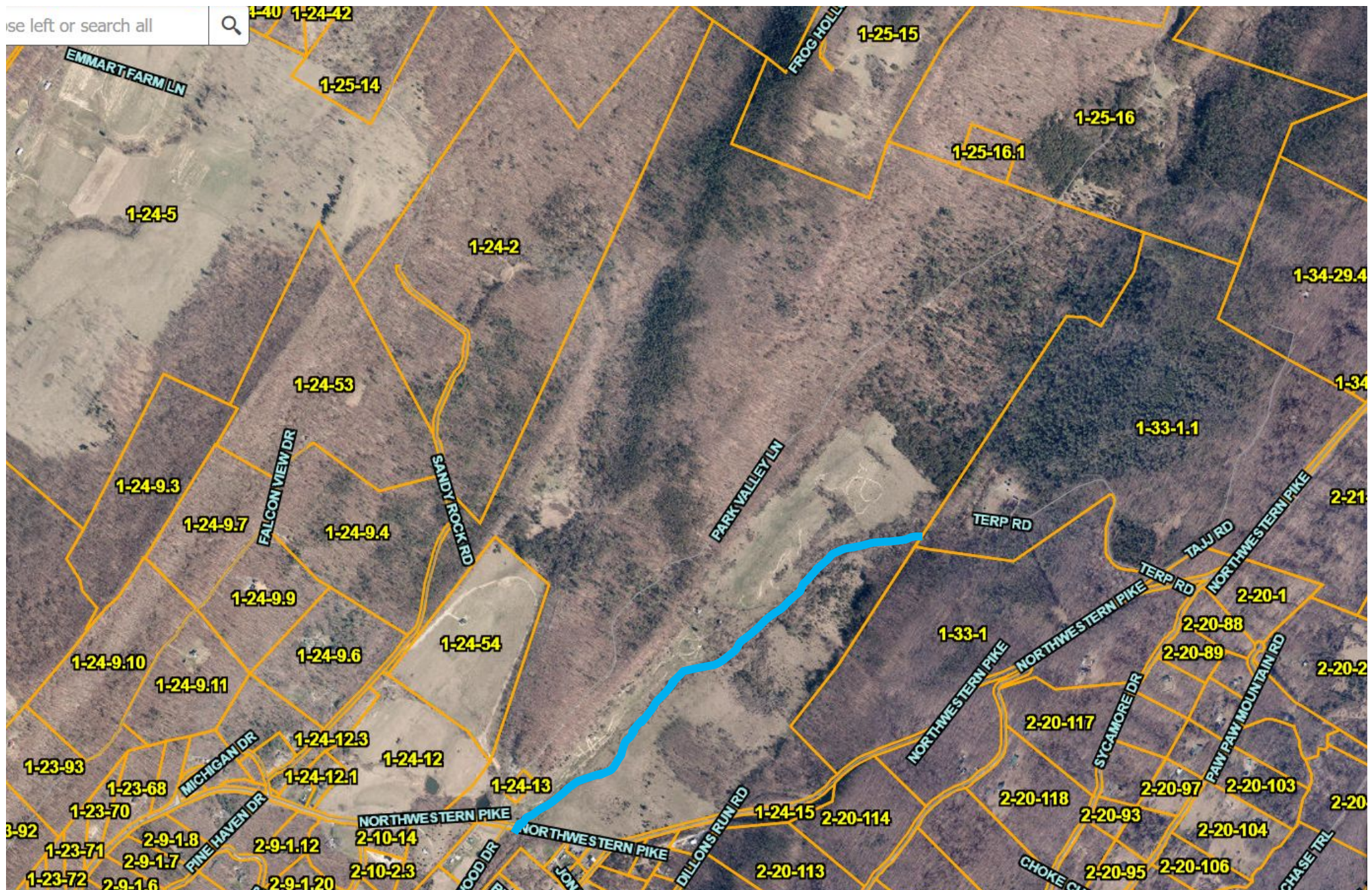








643 acres w/  
trout stream  
slated for a  
utility-scale  
solar farm





Why it matters

Once it's gone, it's gone







# Cacapon & Lost Rivers Land Trust

Protecting the forests, farms, rural heritage, and waters  
of the Cacapon & Lost Rivers Watershed for the  
well-being of present & future generations

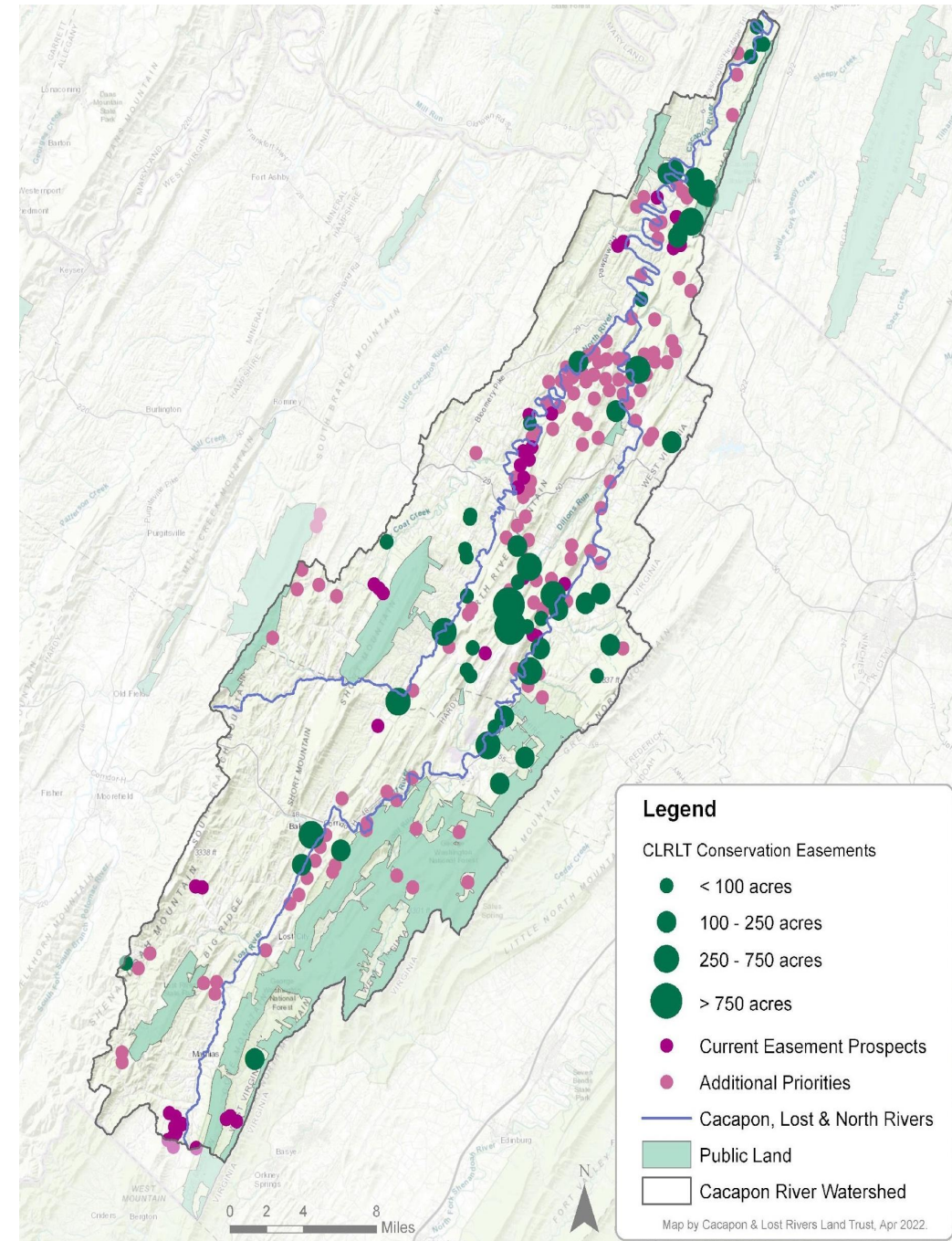






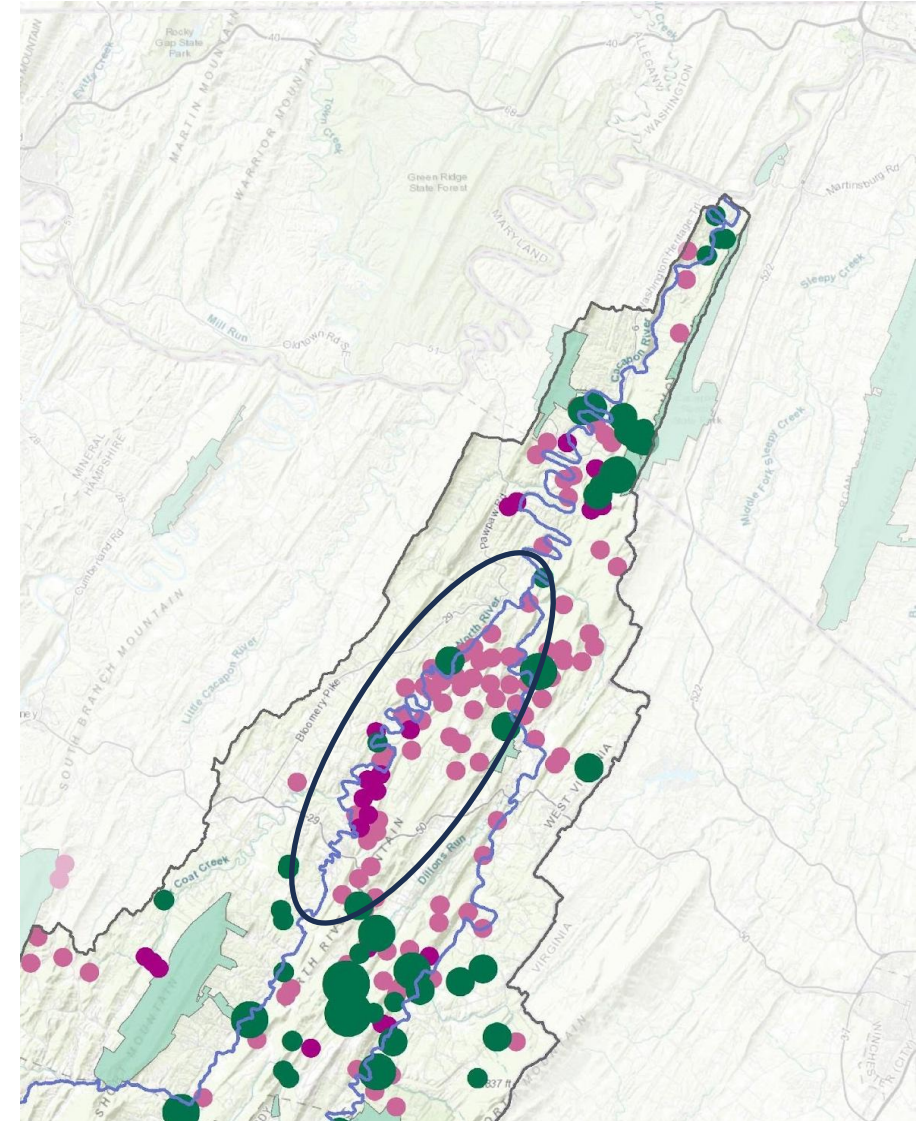
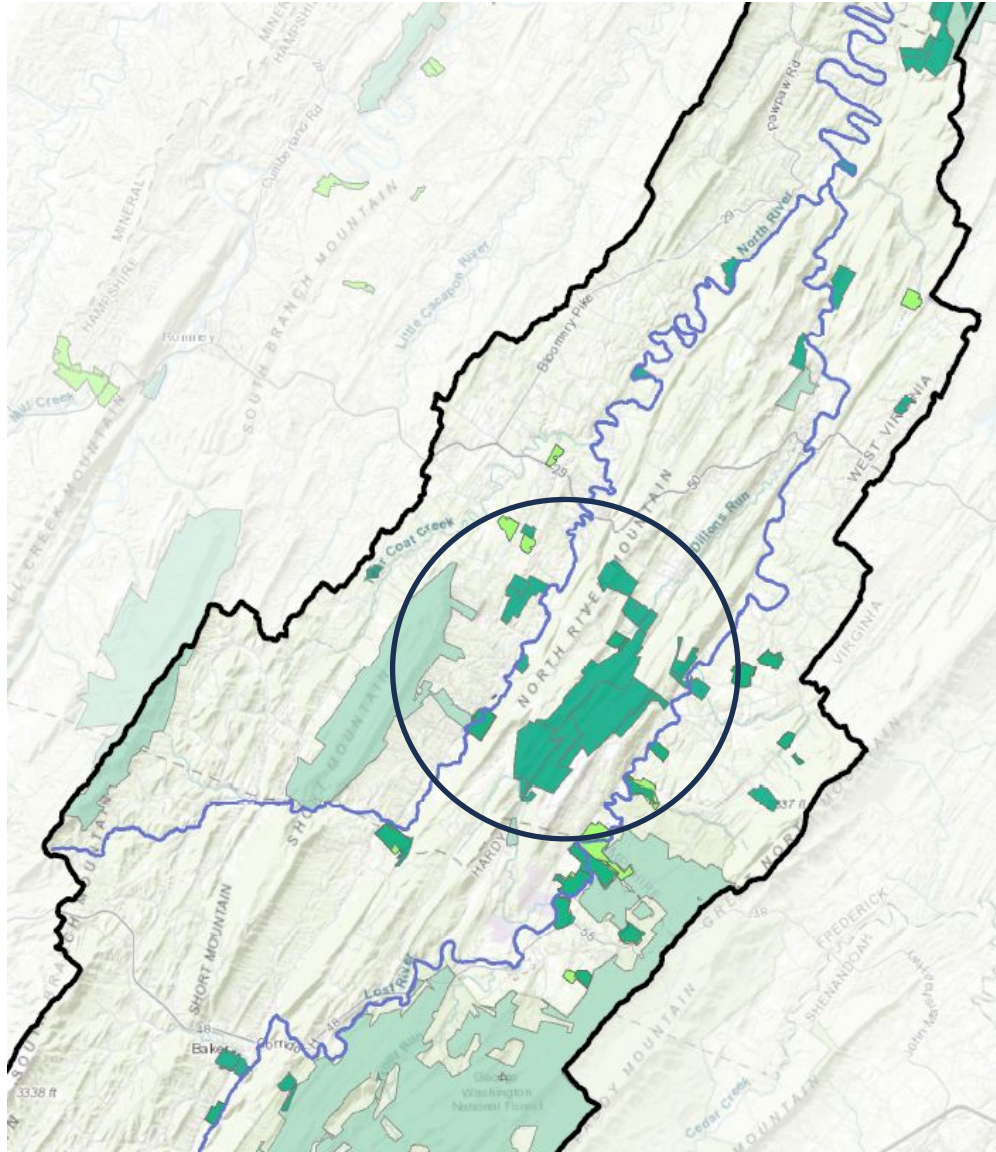
## 15,000 acres and counting...

- Founded 1990
- Accredited
- 2.2 staff team
- 4 projects in progress = 1,280 acres
- Current interest = 4,570 acres



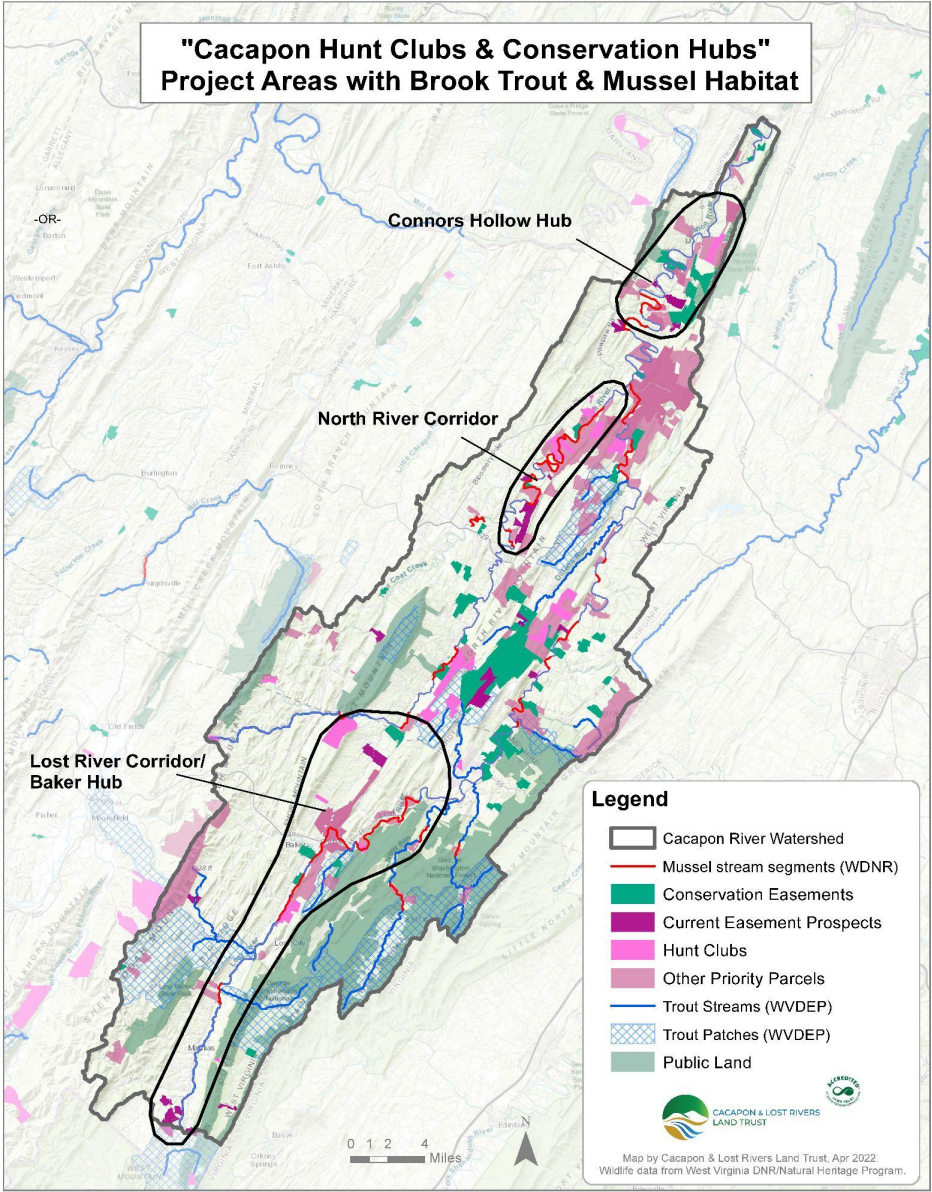
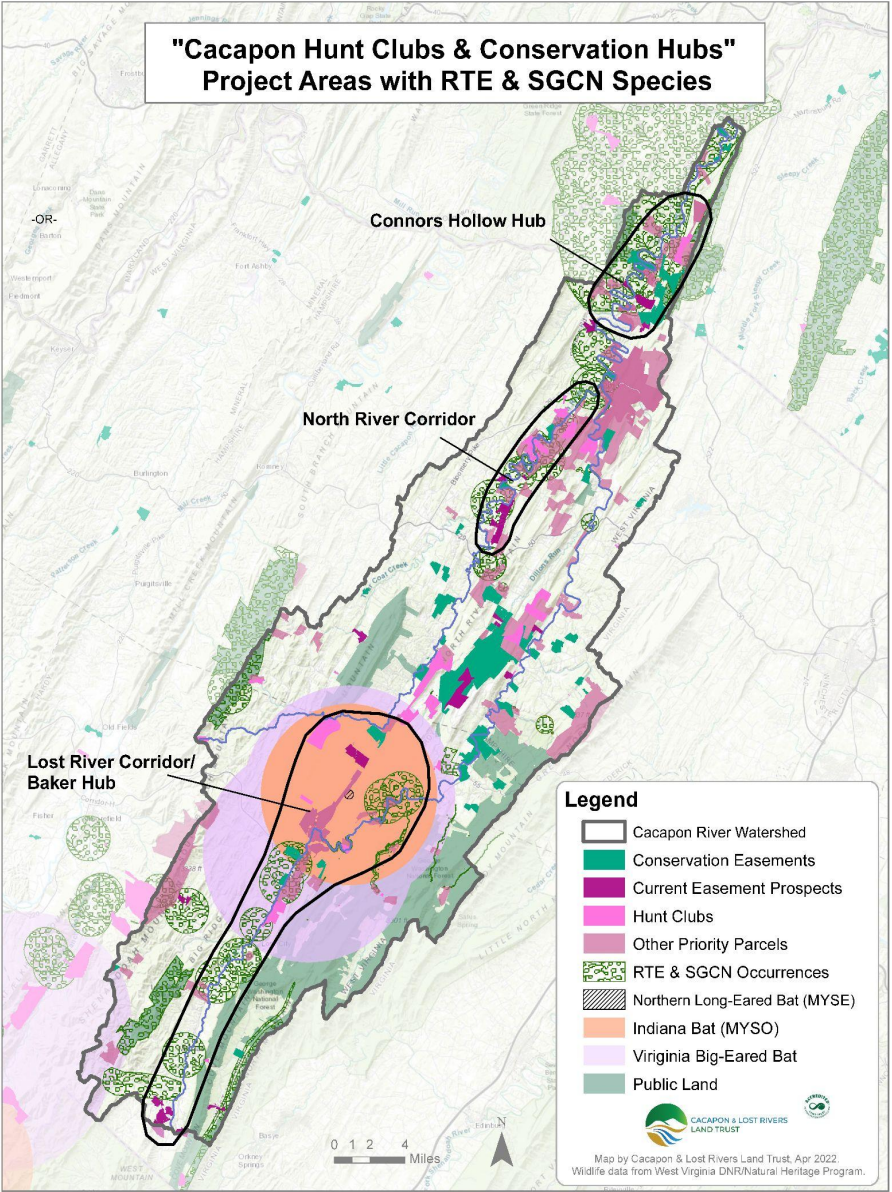


# Hub & Corridor Strategy since 2003



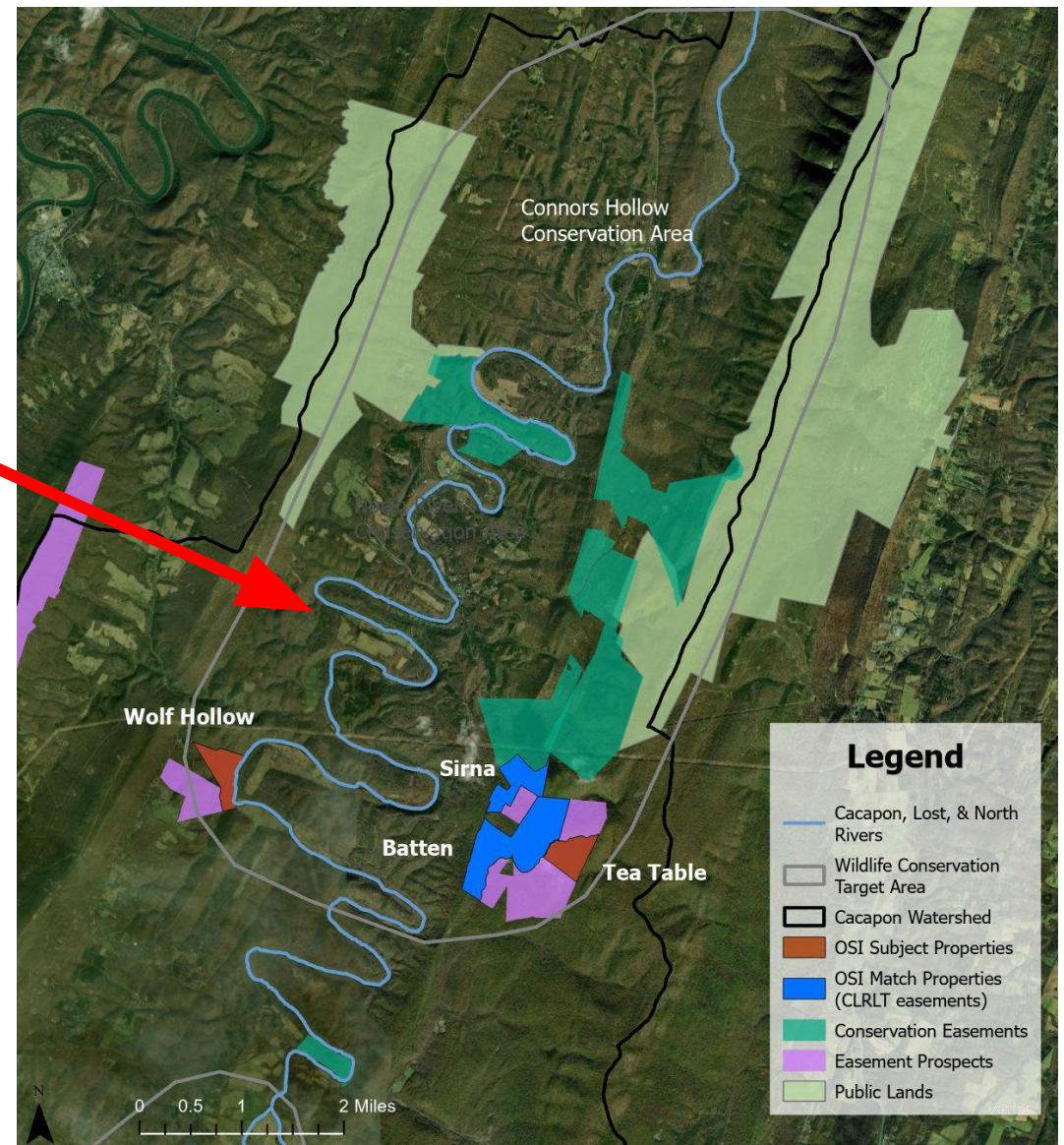
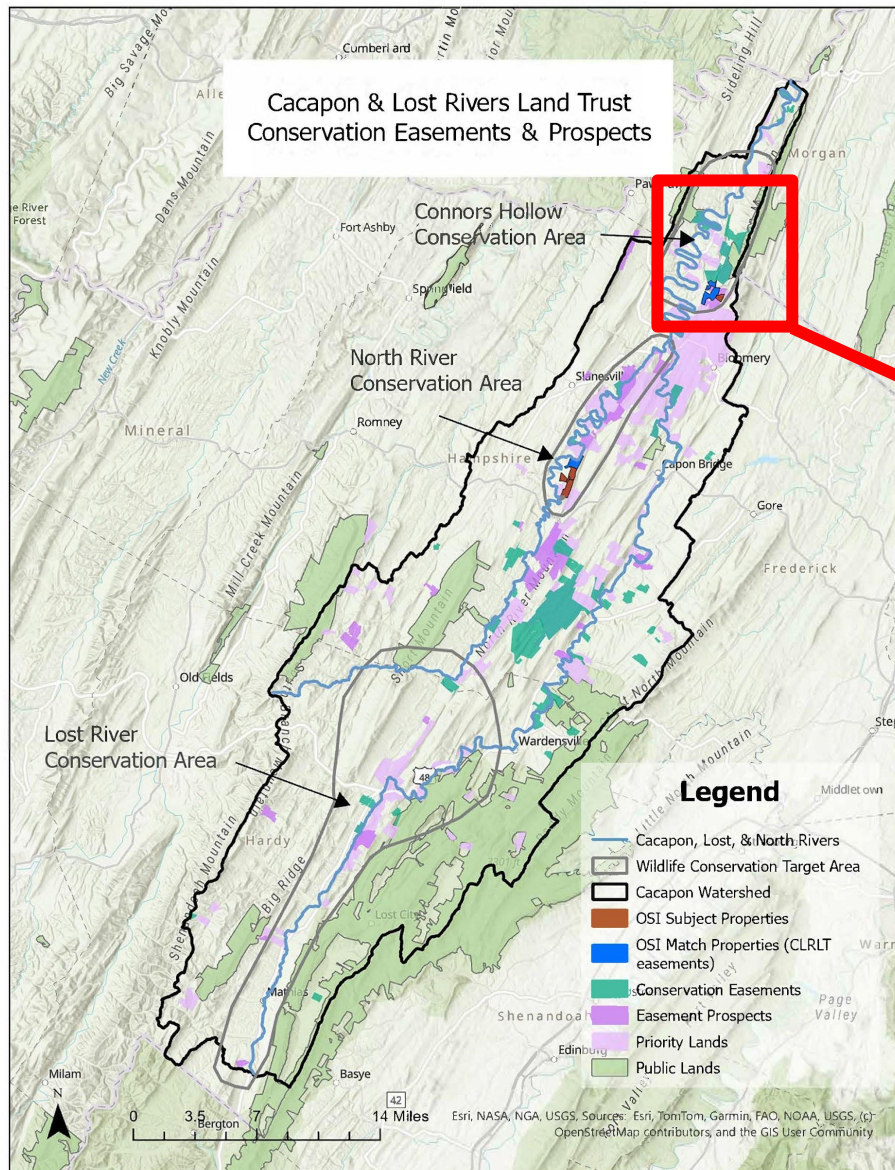


# Hubs & Corridors in Wildlife Hotspots





# Neighbor to Neighbor Building of Hubs







**HUNT CLUBS**



**LARGE FOREST  
TRACTS**



**SMALL FAMILY  
FARMS**

80%+ private land

**We emphasize and rely on landowner collaboration.**







*We specialize in*

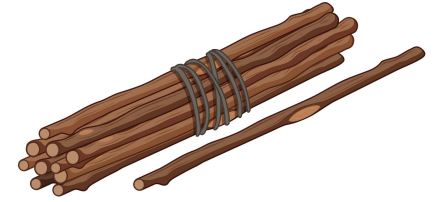
# **Land Protection Agreements**

- “Conservation Easement”
- A tool to carry out your vision for your land
- Restricts damaging land uses to protect what you love





# Common Elements of Land Protection Agreements



## Prohibit or Restrict

- Subdivision
- Excess Structures
- Mining
- Excavation
- Forest Conversion

## Allow

- Residence
- Outbuildings
- Timber harvest (w/ FMP)
- Farming on ag soils
- Hunting





# Cacapon Watershed Collaborative

---

## MISSION

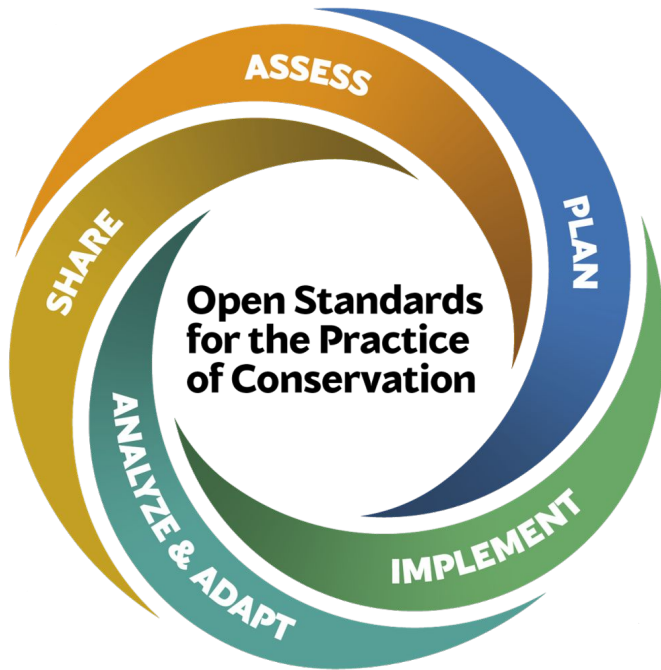
To harness each partner's skills, experience, and resources to conserve and enhance the Cacapon Watershed's valuable ecosystems and way of life.





# CWC Conservation Plan

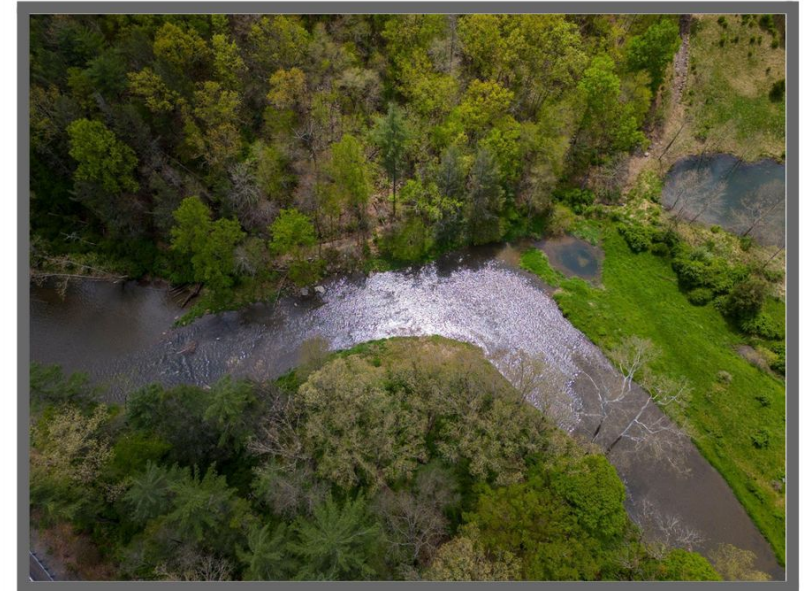
---



Situation Analysis  
&  
Theory of Change



## Cacapon Watershed Conservation Plan



Cacapon Watershed Collaborative  
(CWC)



Nelson Institute for  
Environmental Studies  
UNIVERSITY OF WISCONSIN-MADISON



# CWC Conservation Plan

---

## Strategies

1. Develop/expand farmer information & financial aid
2. Secure land protection agreements on high-priority lands
3. Incentivize restoration of riparian buffers
4. Improve/develop native brook trout patches
5. Promote Forest Management Plans focused on long-term forest health

**Workgroup  
s**

**Forests**

**Streams**

**Farms**

**Land  
Protection**



---

# CWC PLAN IMPLEMENTATION

- Work plans
- Monitoring plans
- Budgets, grants
- Quarterly Pause & Reflect
- Outreach:
  - Community Co-learning
  - Partner program promotion







# **Cacapon & Lost Rivers Land Trust**

Emily (Warner) Merrill – Executive Director  
Marika Suval – Deputy Director

**304-856-1188**

**[www.cacapon.org](http://www.cacapon.org)**





# Land Protection Agreements

---

- Landowners write the rules
- Landowners retain ownership
- Landowners continue to hunt, farm, harvest timber, etc.
- Land trust is given the right & responsibility to carry out landowners' wishes for land





# Landowner Statements

*"CLRLT has had an impressive impact on the region and landowners. It's satisfying to be connected to something that is successful and hopeful."*

*"I hope that a conservation easement will help us to maintain our property as an intact unit for ourselves and for those who follow us."*

- Tom, Hampshire County

*"A place where the only changes are the seasons and the memories they bring."*

- Warren, Morgan County



CACAPON & LOST RIVERS  
LAND TRUST