

Construction Decision Amendment

October 2nd WTWG Meeting

August WTWG Construction Decision

- **Decision:** The WTWG approved the following decisions related to construction acres in Phase 7:
 - a. Mapping Construction With High-Resolution LULC data:** All patches of barren land uses (except “bare shore” and “extractive barren”) that became at least 20% developed within 3-5 years represent “Regulated Construction”. Scaled NLCD annual change in development will be used to map historic construction and the CBLCM will be used to estimate future construction.
 - b. Reconciling Mapped and Reported construction:** Construction acres reported at the county scale will be allocated to LRSEGs by the relative amount of a county’s mapped construction within each LRSEG.
 - i. If reported construction exceeds mapped construction in an LRSEG, remaining reported construction acres will be subtracted from the developed sector (proportionally by developed class).
 - ii. If reported construction is less than mapped construction, remaining mapped construction will be reclassified as “compacted pervious” (loading like “mixed open” in Phase 6).

LUWG September Decision

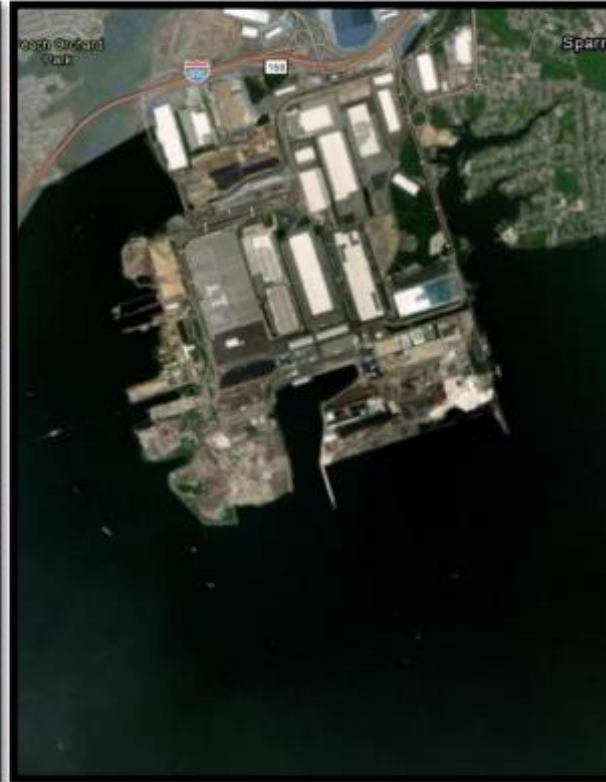
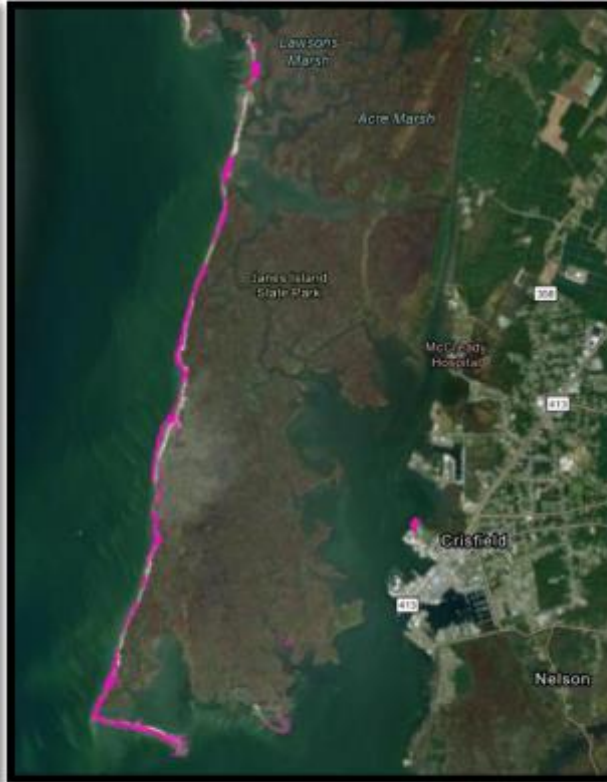
- **Decision:** The LUWG approved an update to the June 2025 LUWG decisional item to read “the group approved moving **all bare shore (tidal and non-tidal) that is not classified as construction** to the Phase 7 water class”. The June 2025 minutes will be updated to reflect this change.

Decision: Approval of an update to the August 2025 WTWG construction decisional item to read "Mapping Construction With High-Resolution LULC data: All patches of barren land uses (except ~~"bare shore"~~ and "extractive barren") that became at least 20% developed within 3-5 years represent "Regulated Construction"..."

- Total bare shore area in the watershed is minimal: 1,374 acres.
- Left: Example of bare shore (pink) along the Bay that would be counted as water if approved.
- Right: Example of bare shore (pink) along the Bay that is actually construction, that would be counted as construction and not water.
- Approved by Land Use Workgroup at September 2025 meeting



Beach along Janes Island State Park



Construction misclassified as Bare Shore in Baltimore County, Maryland

Decision and Vote

- **Decision Requested:** Approval of an update to the August 2025 WTWG construction decisional item to read “Mapping Construction With High-Resolution LULC data: All patches of barren land uses (except ~~“bare shore”~~ and “extractive barren”) that became at least 20% developed within 3-5 years represent “Regulated Construction”...