



Bay Program Education Workgroup Meeting

Quarter 4
Oct 6, 2025

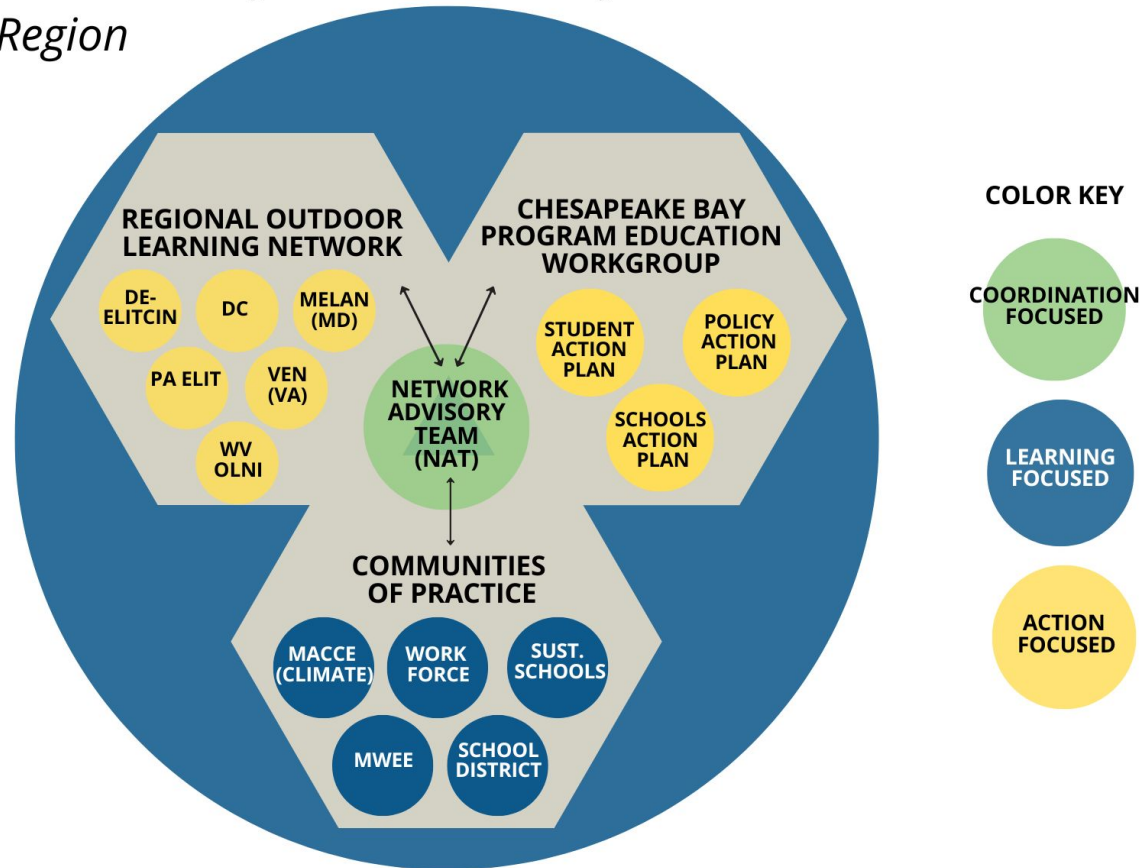
Agenda

- ▶ **Welcome**
- ▶ **Environmental Literacy Outcomes**
- ▶ **EL Forum & EL Summit**
- ▶ **ELIT Survey & Tracking Outcomes**
- ▶ **State & Regional Capacity Building Updates**

Environmental Literacy Network Ecosystem

Mid-Atlantic Region

DRAFT
June 2025



This diagram represents a simplified, high-level system map of overlapping environmental literacy networks operating across the region. The Environmental Literacy Network Advisory Team (NAT) convenes quarterly to share, learn from each other, think strategically, and plan regional convenings. The colors represent the primary function of each element (as represented by the Color Key), realizing that in network life there is always a possibility for action to emerge when people come together from across sectors to share and learn together. The ROLN state networks support coordination, learning and action at the state level.

Environmental Literacy Outcomes

Public comment period has ended

Language Reviewed by the Management Board

K-12 Student **Environmental Literacy** Experiences

~~Continually~~ Increase the number of students who participate in inquiry-based environmental literacy instruction working towards at least one Meaningful Watershed Educational Experience, or MWEE, in each elementary, middle and high school.

- By 2040, state targets are reached that result in **at least** 75% of public school students being enrolled in a school district that offers a MWEE for all students. *(Targets would remain the same for 2035)*

Management Board Retreat Edits

~~K-12~~ Student **Environmental Literacy** Experiences

~~Continually~~ Increase the number of students who participate in inquiry-based environmental literacy instruction, ~~with the aim of each student receiving working towards~~ at least one Meaningful Watershed Educational Experience, or MWEE, in ~~each~~ elementary, middle and high school.

- By 2040, ~~reach~~ state targets ~~are reached that to~~ result in ~~at least~~ 75% of public school students being enrolled in a school district that offers a MWEE for all students. (*Targets would remain the same for 2035*)

Clean Outcome and Target Language

Student Environmental Literacy Experiences Outcome

Increase the number of students who participate in inquiry-based environmental literacy instruction, with the aim of each student receiving at least one Meaningful Watershed Educational Experience, or MWEE, in elementary, middle and high school.

- By 2040, reach state targets to result in at least 75% of public school students being enrolled in a school district that offers a MWEE for all students. *(Targets would remain the same for 2035)*

Language Reviewed by the Management Board

School District **Environmental Literacy** Planning

~~Continually~~ Increase the number of school districts that have policies and practices in place that support environmental education and sustainable schools.

- By 2040, all jurisdictions reach their target for the number of **public** school districts that are well prepared to deliver a comprehensive and ~~systemic~~-system-wide approach to environmental literacy. (*Targets would remain the same for 2035*)

Management Board Retreat Edits

School District **Environmental Literacy** Planning

~~Continually~~ Increase the number of school districts that have policies and practices in place that support environmental education and sustainable schools.

- By 2040, **reach** all jurisdictions ~~reach their~~ targets for the number of **public** school districts that are well prepared to deliver a comprehensive and ~~systemic~~ **system-wide** approach to environmental literacy. *(Targets would remain the same for 2035)*

Clean Outcome and Target Language

School District Environmental Literacy Planning

Increase the number of school districts that have policies and practices in place that support environmental education and sustainable schools.

- By 2040, reach all jurisdictions targets for the number of public school districts that are well prepared to deliver a comprehensive and system-wide approach to environmental literacy. *(Targets would remain the same for 2035)*

Upcoming Events:

1. Virtual EL Forum

***Weaving Our Stories, Shaping Our Future:
Advancing Environmental Literacy in the
Mid-Atlantic through Policy and Practice***

Date: December 11 and December 17, 2025

Audience: State networks, Communities of Practice, and Workgroups

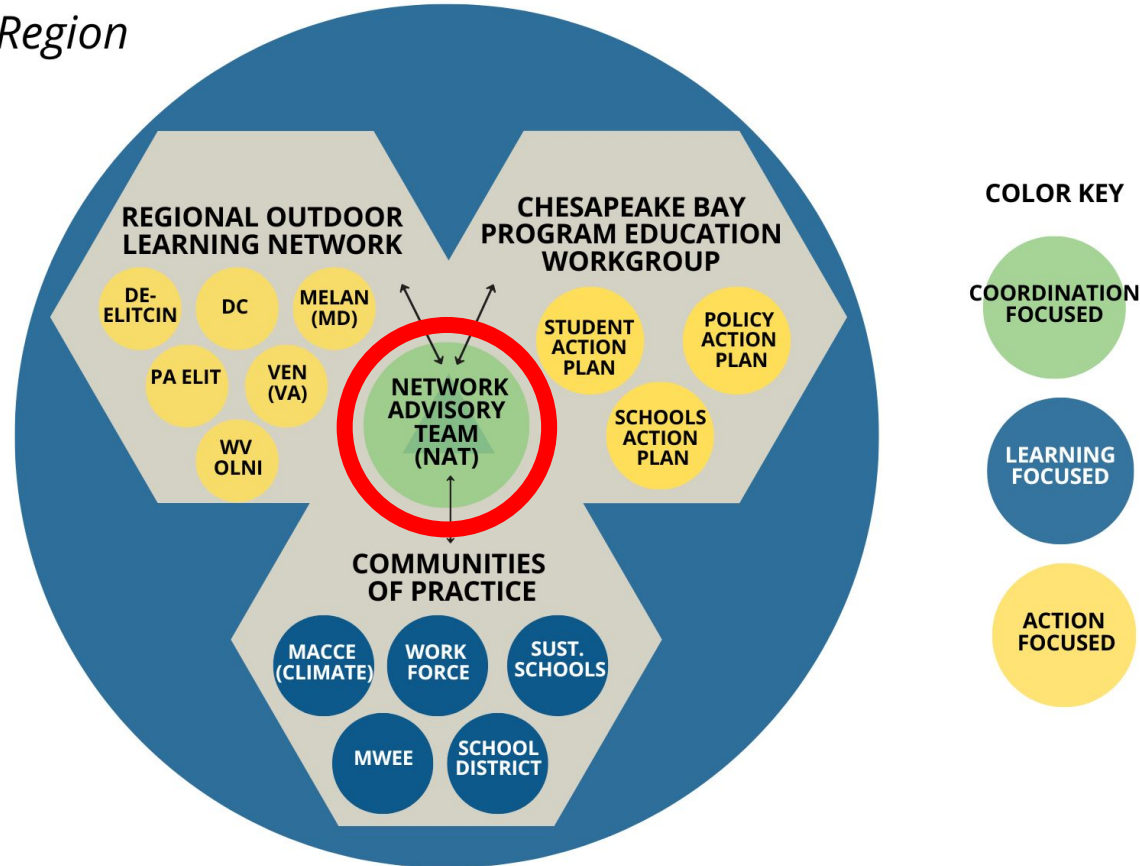
Purpose: Create a shared space for learning, inspiration, and coordination across the Mid-Atlantic region that lifts up examples of success at the intersection of policy and practice—with the aim of creating and sharing inspirational state and regional stories and supporting the creation of tangible products to influence decision-makers and guide future work.

Environmental Literacy Network Ecosystem

Mid-Atlantic Region

DRAFT
June 2025

Forum Planning



This diagram represents a simplified, high-level system map of overlapping environmental literacy networks operating across the region. The Environmental Literacy Network Advisory Team (NAT) convenes quarterly to share, learn from each other, think strategically, and plan regional convenings. The colors represent the primary function of each element (as represented by the Color Key), realizing that in network life there is always a possibility for action to emerge when people come together from across sectors to share and learn together. The ROLN state networks support coordination, learning and action at the state level.

Gathering Waters

A Virtual Story Weaving Event

Day 1: Thursday, December 11 9:30am - 12pm

Day 2: Wednesday, December 17 9:30am - 12pm

Designed for the Mid-Atlantic Environmental Literacy Community

DE | DC | MD | PA | VA | WV

Water persists.

It flows around obstacles.

It connects everything.

It's unstoppable.

Our stories, strategies, and vision for the future should share the same qualities—resilient, adaptive, transformative & unified—culminating in powerful, reflective practice & policy that advances environmental literacy across the Mid-Atlantic.

All are invited to this 2-day virtual E-LIT Forum to contribute to years of previous work at in-person Forums sponsored by NOAA and the Chesapeake Bay Trust to share, capture, celebrate, and weave together policy and practice successes in your state with an eye towards the future.

REGIONAL OUTDOOR
LEARNING NETWORK

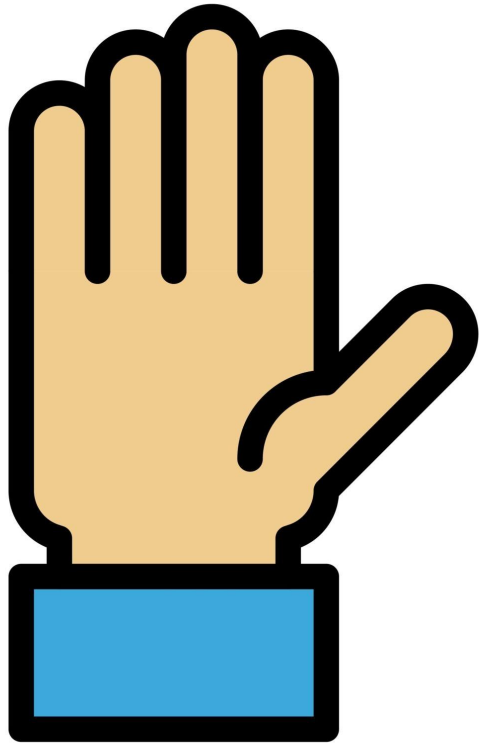
LOCAL
CONCEPTS



Purpose: Create a shared space for learning, inspiration, and coordination across the Mid-Atlantic region that lifts up examples of success at the intersection of policy and practice—with the aim of creating and sharing inspirational state and regional stories and supporting the creation of tangible products to influence decision-makers and guide future work.

Why?

1. Pinpoint the most transformative conditions of progress. Use stories to uncover trends, patterns, and system-level insights to inform our strategic interventions in the future.
2. Develop strategic products that can be customized to support collective engagement efforts (ex. EL Summit, school boards, funders, etc.)
3. Invite deeper and **more inclusive reflection**, sharing and alignment.



**NAT
Representatives
Please Identify
Yourselves in
the Chat**

Upcoming Events:

2. EL Summit

Date: *Spring 2026*

Audience: *State, federal, and nonprofit leaders responsible for achieving the EL outcomes*

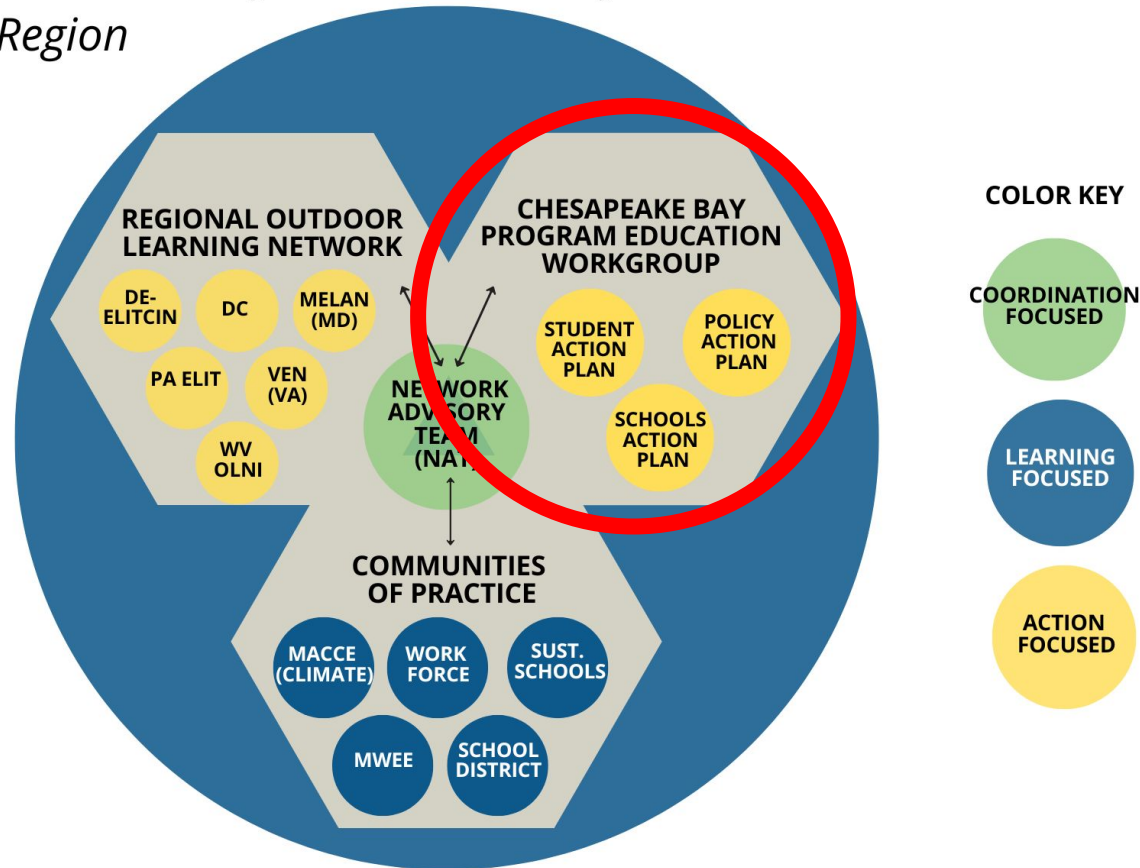
Purpose: *Provide a forum for dialogue, collaboration, and coordination among leaders about the future of systemic and sustainable environmental education in the Chesapeake Bay watershed. The 2026 Summit will focus on rolling out the new outcomes.*

Environmental Literacy Network Ecosystem

Mid-Atlantic Region

DRAFT
June 2025

**Summit
Planning**



This diagram represents a simplified, high-level system map of overlapping environmental literacy networks operating across the region. The Environmental Literacy Network Advisory Team (NAT) convenes quarterly to share, learn from each other, think strategically, and plan regional convenings. The colors represent the primary function of each element (as represented by the Color Key), realizing that in network life there is always a possibility for action to emerge when people come together from across sectors to share and learn together. The ROLN state networks support coordination, learning and action at the state level.

EL Summit: 2 Parts

Purpose: *Provide a forum for dialogue, collaboration, and coordination among leaders about the future of systemic and sustainable environmental education in the Chesapeake Bay watershed. The 2026 Summit will focus on rolling out the new outcomes.*

In-Person State Leadership Meetings

Opportunity to update leaders on the status of environmental literacy in your state.

Virtual Mid-Atlantic Convening

Show how the efforts in your state contribute to regional efforts to advance environmental literacy.

EL Summit: 2 Parts

Purpose: *Provide a forum for dialogue, collaboration, and coordination among leaders about the future of systemic and sustainable environmental education in the Chesapeake Bay watershed. The 2026 Summit will focus on rolling out the new outcomes.*

In-Person State Leadership Meetings

- What conversations do you want to have during the in-person meetings? (Agenda topics)
- Who should be included in the conversation?

Virtual Mid-Atlantic Convening

- What are the conversations we want to have in the virtual regional convening? (Agenda topics)
- How much time do we want to carve out?

EL Summit: 2 Parts

Purpose: *Provide a forum for dialogue, collaboration, and coordination among leaders about the future of systemic and sustainable environmental education in the Chesapeake Bay watershed. The 2026 Summit will focus on rolling out the new outcomes.*

In-Person State Leadership Meetings

- What conversations do you want to have during the in-person meetings? (Agenda topics)
- Who should be included in the conversation?

Virtual Mid-Atlantic Convening

- What are the conversations we want to have in the virtual regional convening? (Agenda topics)
- How much time do we want to carve out?

What is the best date/ timing for Leadership Summit meetings in your state? What degree of support is needed from the EWG/ NOAA team?

EL Summit: 2 Parts

Purpose: *Provide a forum for dialogue, collaboration, and coordination among leaders about the future of systemic and sustainable environmental education in the Chesapeake Bay watershed. The 2026 Summit will focus on rolling out the new outcomes.*

In-Person State Leadership Meetings

- What conversations do you want to have during the in-person meetings? (Agenda topics)
- Who should be included in the conversation?

Virtual Mid-Atlantic Convening

- What are the conversations we want to have in the virtual regional convening? (Agenda topics)
- How much time do we want to carve out?

ELIT Survey & Tracking Outcomes

- *No funding available for ELIT*
- *Proposition for 2026:*
 - *Maintain collection like previous years*
 - *Explore how we we can leverage other datasets and improve collection for 2028*

Feedback:

- *Can we run a shorter period for input as we did in 2024 for 2026? (May/June - October)*
- *What should we keep in mind?*

State/Regional Updates & Announcements

LinkedIn Group - Pros, Cons, Interest?

A LinkedIn-based gathering space for sharing relevant posts, opportunities, celebrations, jobs, etc. related to EL/ EE.

- Would you be interested in a group like this?
- If so, should it be public/private?
- Who should own it?
 - Spread out “ownership”?
- Moderate posts or establish posting guidelines?
- Name?
 - Mid-Atlantic Environmental Literacy Network
 - Regional Outdoor Learning Network
 - Other